

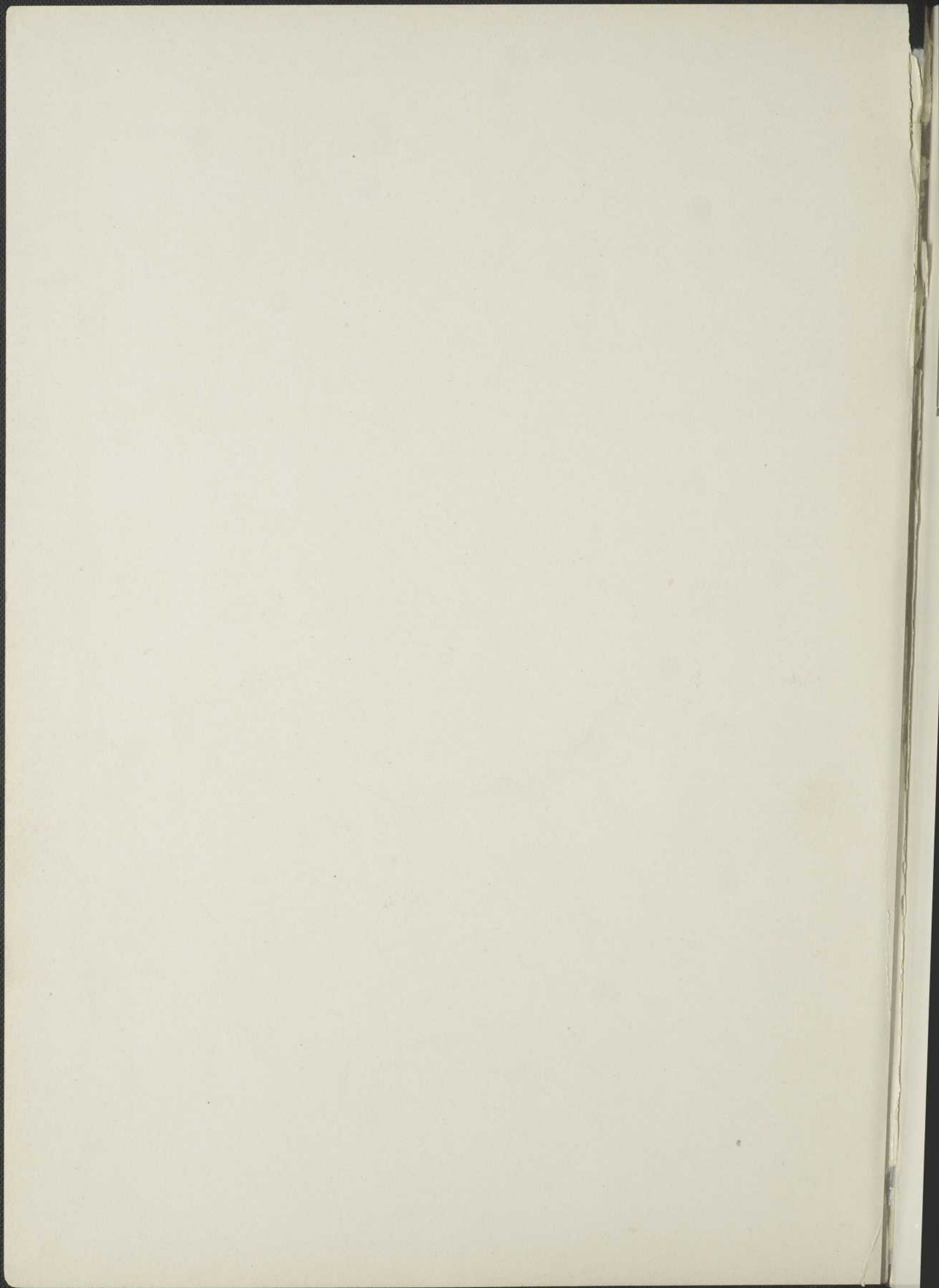
SK
3
M45
1904

THE MEGANTIC
FISH AND GAME
CORPORATION



Bibliothèque Nationale du Québec

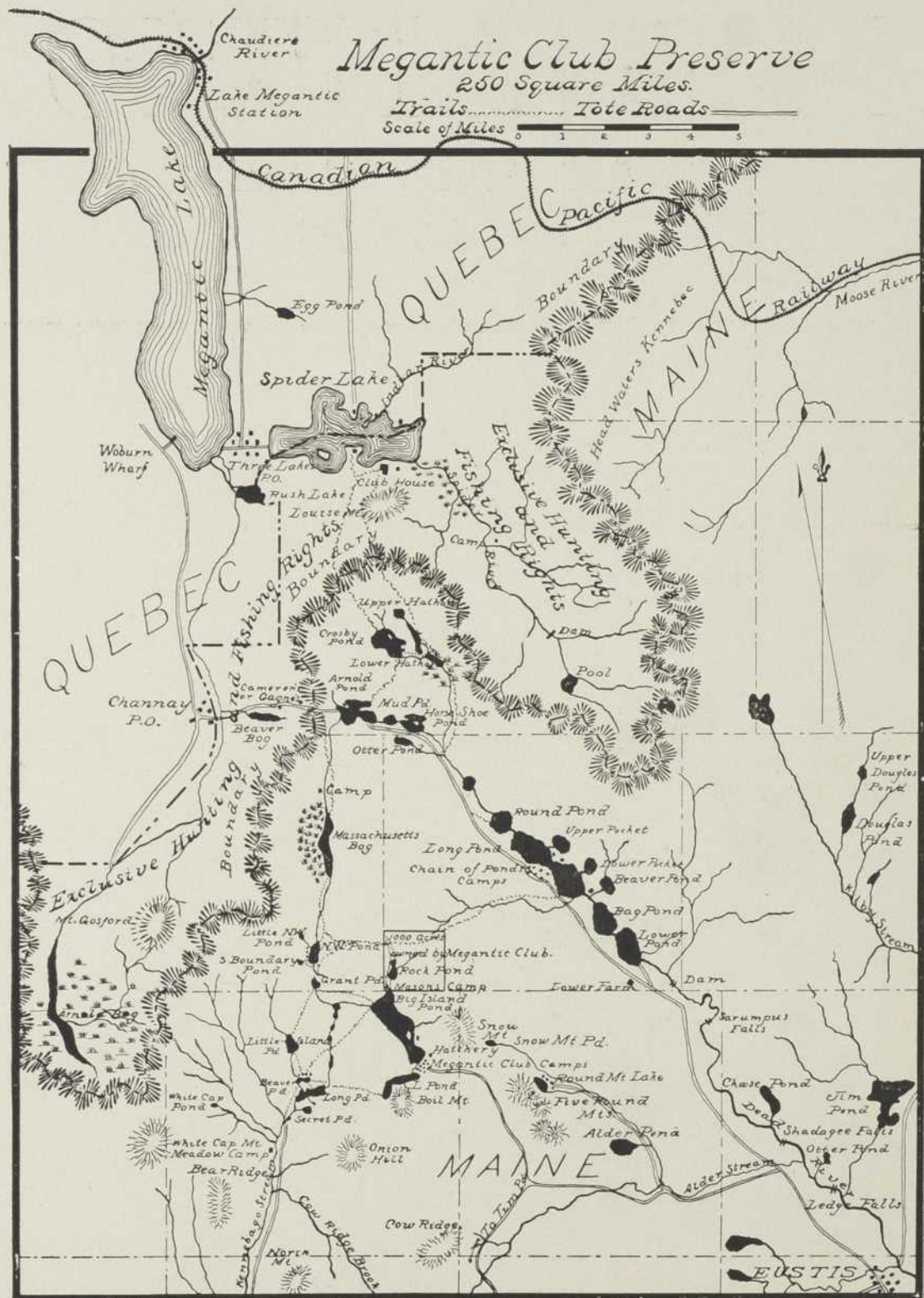
With Compliments of the
Author W. K. Linn.



THE
MEGANTIC
FISH AND GAME
CORPORATION



1904



SK
3
M45
1964

OFFICERS AND DIRECTORS.

1904.

Dr. Geo. H. Payne PRESIDENT.
~~JEREMIAH RICHARDS, New York, N. Y.~~

Meigs Whaples VICE-PRESIDENTS. *W. L. Quimby*
~~DR. GEORGE H. PAYNE, Boston, Mass.~~ ~~MEIGS H. WHAPLES, Hartford, Conn.~~

SECRETARY.

E. A. PHIPPEN, Boston, Mass.

TREASURER.

PARRY C. WIGGIN, Boston, Mass.

CLERK.

DR. GEORGE W. WAY, Portland, Me.

DIRECTORS.

W. R. BATEMAN.
L. O. CRANE.
FRANK FALLON.
A. W. GLEASON.
STEPHEN F. JOHNSON.
GEORGE M. KIRKNER.
W. A. MACLEOD.
DR. GEORGE H. PAYNE.
E. A. PHIPPEN.

W. L. QUIMBY.
JEREMIAH RICHARDS.
ARTHUR W. ROBINSON.
J. T. SHERMAN.
J. F. SIMONS.
R. E. TRAIER.
CHARLES G. WELLS.
MEIGS H. WHAPLES.
PARRY C. WIGGIN.

COMMITTEES.

EXECUTIVE.

DR. GEO. H. PAYNE. P. C. WIGGIN. S. F. JOHNSON. FRANK FALLON.

HATCHERY.

L. O. CRANE.

A. W. ROBINSON.

GUEST.

W. L. QUIMBY.

E. A. PHIPPEN.

MEMBERSHIP.

J. RICHARDS. G. M. KIRKNER. A. W. ROBINSON. W. A. MACLEOD.
C. G. WELLS. W. R. BATEMAN. A. W. GLEASON. W. L. QUIMBY.
FRANK FALLON. P. C. WIGGIN.

FINANCE.

W. L. Quimby
~~FRANK FALLON~~ R. E. TRAIER. W. A. MACLEOD. W. R. BATEMAN.
L. O. CRANE. P. C. WIGGIN.

LIST OF CAMPS AND WATERS.

CAMPS.

CLUB HOUSE (7).
 ARNOLD POND (8).
 BIG ISLAND (22).

BIG NORTHWEST (5).
 CHAIN OF PONDS (13).
 CROSBY.

KIBBY VALLEY.
 MOOSE RIVER (2).
 SPIDER RIVER CAMP.

PONDS.

SEVEN PONDS. { BEAVER. L. POND LONG. SOUTH BOUNDARY.
 LITTLE ISLAND. LITTLE NORTHWEST. BIG NORTHWEST.
 GRANT. ROCK. BIG ISLAND.

CHAIN OF PONDS. { BEAVER. BAG. LONG. UPPER AND LOWER POCKET.
 ROUND. LOWER.

OTHER PONDS. { ARNOLD. CROSBY. HORSESHOE MUD. OTTER.

LAKES.

MEGANTIC.

RUSH.

SPIDER.

RIVERS.

ARNOLD.

DEAD.
 SPIDER, UPPER.

INDIAN.

KENNEBAGO, UPPER.
 SPIDER, LOWER.

STREAMS.

CLEAR WATER.

GORE.

HORSESHOE.

INDIAN.

MASSACHUSETTS

BROOKS.

BEAR.

DENNISON.

GOLD.

ROBINSON.

BOGS.

ARNOLD.

BEAVER.
 HATHAN, UPPER.

BIG.
 HATHAN, LOWER.

CARIBOU.

CRANBERRY
 MASSACHUSETTS.

THE MEGANTIC FISH AND GAME CORPORATION.

The Megantic Fish and Game Corporation was incorporated under the laws of the State of Maine in February 1887, and under the laws of the Province of Quebec in March of that same year.

The membership is limited to two hundred and fifty.

The Corporation owns large tracts of woodland and virgin forest in Canada and Maine, and leases other larger tracts, and operates in all a territory comprising two hundred and fifty square miles.

Its headquarters are at the Club House on Spider Lake, in the Province of Quebec, but by far the larger part of its territory is in the State of Maine, adjoining its Canadian property.

Its waters comprise three lakes, twenty-two ponds, six rivers, nine streams and brooks, and eight bogs, and abound in the square tailed brook trout, land-locked salmon, bass, and other beauties, in large size, and in large numbers.

Its dense forests and large clearings are the continuous haunts of the bear, the deer, the moose, and all the other and smaller game dear to the hunter's heart.

The Corporation owns and operates a hatchery at Big Island, and annually takes great care in stocking its waters, so that fish are always waiting anxiously for the appearance of the handsome fly.

At five widely separated parts of its preserve the Corporation maintains its camps and stewards, and efficient corps of help, and, at all parts of the preserve, the welfare and interest of members are studiously guarded.

During the last two years large improvements have been made, at the Club House, Big Island, Chain of Ponds, Arnold and Northwest Ponds.

This preserve is easily accessible. But when the confines of the preserve have been reached, and the beautiful trails and waterways have been passed, and a far destination in the interior has been accomplished, and the camper lays his tired head on the luxurious bed of fir tips in the log cabin which always awaits his coming, and in the few moments preceeding sleep, listens to the hoot of the owl, the far-away bark of the bear, the thud of the rabbit, the stealthy tread of the deer, or the thousand other almost silent noises of the mountain's night, he thinks or dreams,

“This is the forest primeval.”

THE CLUB HOUSE.

The “Club House”, or Macannamac Lodge, stands high upon a bluff in a grove of white birches, at the southern end of Macannanac, popularly called Spider Lake. It is a large and commodious building, of three stories, with a large lounging room provided with piano, library and attractive large corner fireplace; a centrally located office with another large fireplace; a large dining room; while above are privatories, baths and bedrooms, and in the attic are lockers for members.

The interior of the house has recently been sheathed and burlapped from top to bottom, and the old ell has been torn down and a new ell built, with a gain in rooms, and better lavatory, bath and laundry accommodations.

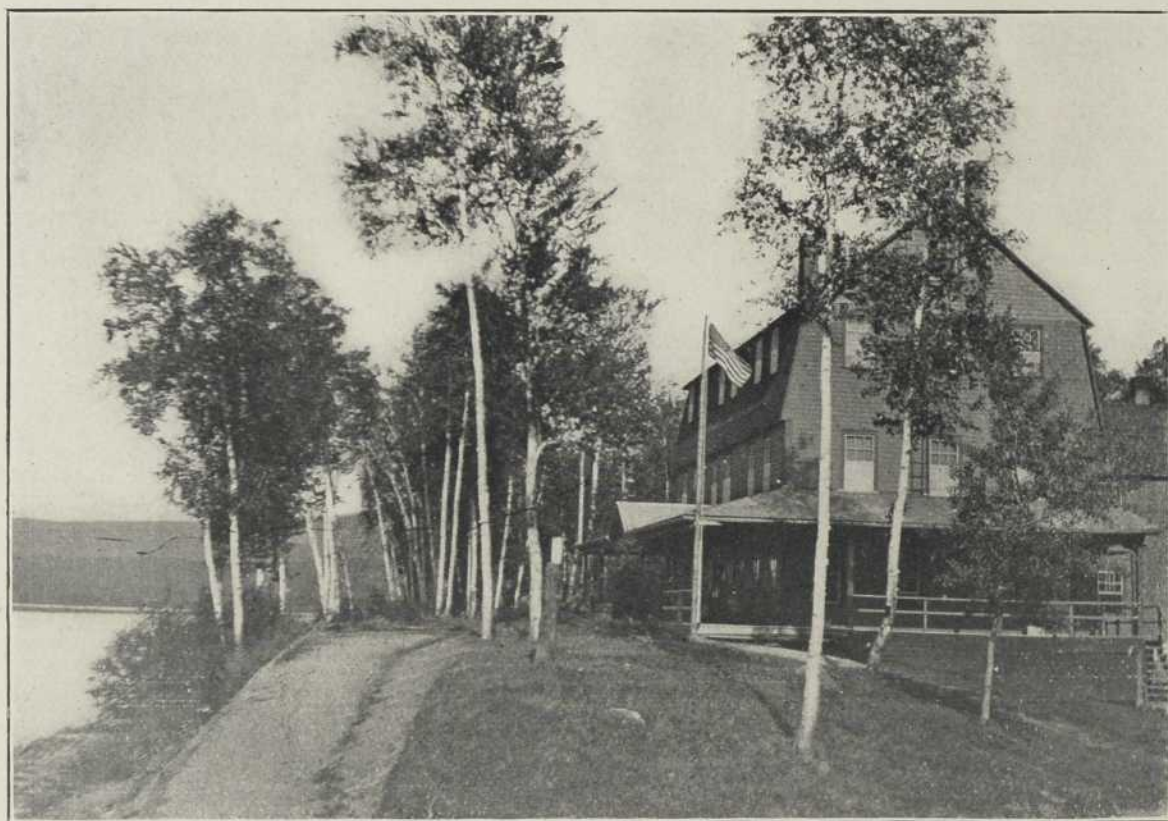
A wide covered piazza runs around three sides of the house.

The water is pure, and from a gushing spring in the nearby mountain, is conducted in iron pipe to the Club House.

All sanitary arrangements are carefully and constantly guarded.

Nearby is a boat house, filled with boats and canoes; a guides' camp or sleeping quarters; a refrigerator house, and a rifle range.

Private cabins owned by members are numerous here, located at respectful distances from each other, along the lake shore, on both sides of the Club House.



CLUB HOUSE.

A steam launch, owned by the Corporation, plies the lakes' water. Bass fishing is good here, and even on the Club Landing, large bass are always caught.

From this point trips up the Spider River to Brown's Landing, and the water and pools above; up the Arnold River; and to Rush Lake are made, and plenty of trout are always to be caught.

In the hunting season the Club House is the great objective point for members, and the deer which the Summer visitor sees up the Spider, the fall hunter finds awaiting his arrival. Stories of the abundance of partridge hereabout would scandalize the ear of him accustomed only to the truth. And yet these stories are true.

When the day is done, and the fisher has fished and the hunter hunted, and that restfulness born of the woods is on the soul, there is a charm to this broad piazza as one sits thereon in reverie, lost to the gentle lapping of the waves, now and then looking afar in the dying light over lakes, and streams, and forests, and mountains, as night quietly drops her curtain and "pins it with a star".



CLUB HOUSE PARLOR.



CLUB HOUSE OFFICE.



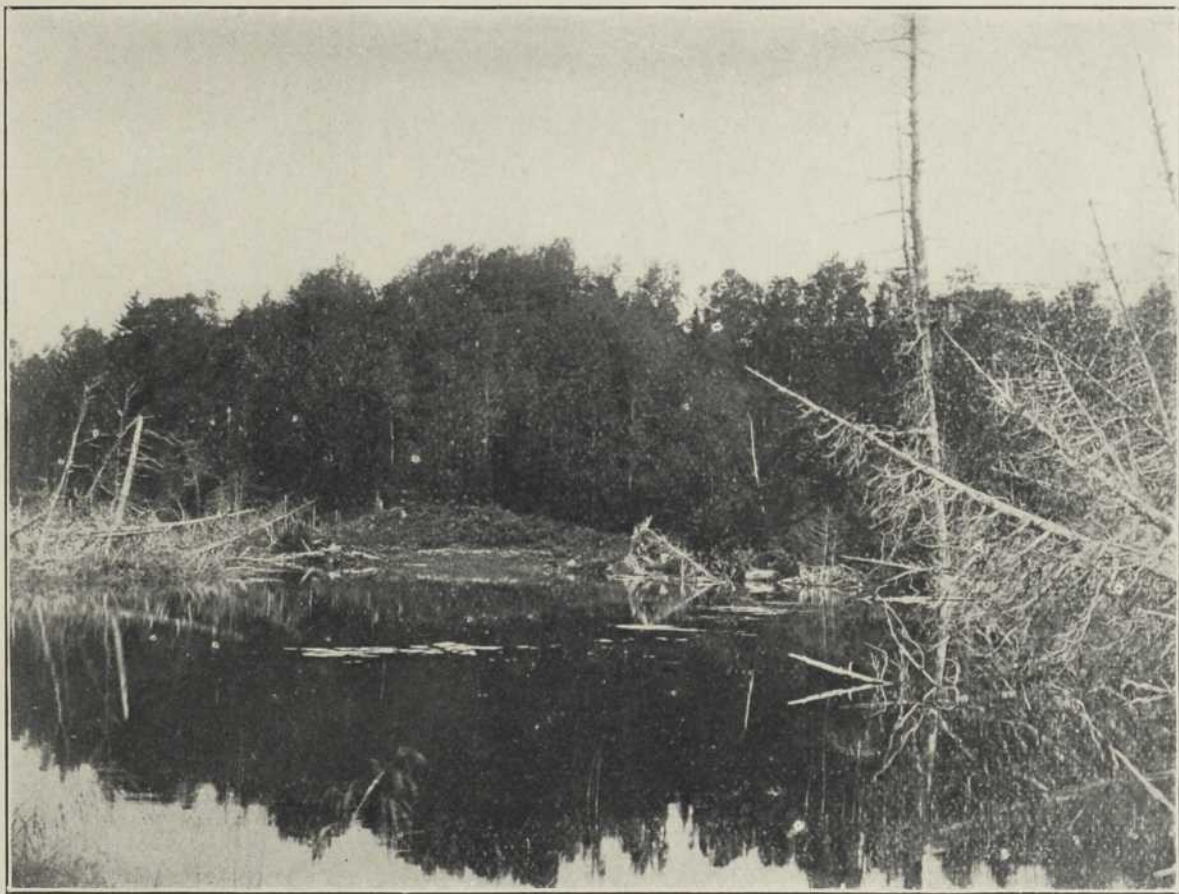
LOWER SPIDER.



SPIDER RIVER, BROWN'S LANDING.

SPIDER RIVER.

The member making a stay at the Club House makes frequent trips up this water. Rising far back in the boundary mountains several brooks leap and run "to make the brimming river". Four miles from the Club House, with paddle or oars, up its winding course brings one to Spider Camp—and along the route thereto is excellent fishing.



UPPER SPIDER.

Beyond this camp the river is not navigable, because of the many rapids; but three miles above the camp are the pools, reached over a delightful trail, and a day's trip to those pools nearly always results in a full basket.

An evening paddle, in the close season, from its mouth to Spider Camp, presents to the nearby view many deer, as they feed on the lily pads, and, in the open season, the locality is much used by hunters.

BIG NORTHWEST.

Three miles and a half due south of Massachusetts Bog, over a delightful trail, gently rising and partly following the sinuous course of Massachusetts Stream, brings one to Big Northwest Pond, where so thickly do the woods crowd the shores, that one is ready to believe that the only place of egress is the opening skyward.

Here a steward is stationed, who takes scrupulous care of his guests.

Here are located a dining camp and five other of the Corporation's Camps. Here is the spring most famous of any on the preserve—very large and very cold, the temperature whereof is only slightly above freezing in the Summer's hottest weather.

The fishing here is the best, at all times. From the earliest crack of dawn to the last shadow of evening, the trout here rise and keep rising. It is nothing at this place to take several trout at one cast.

Little Northwest, South Boundary and Grant Ponds lie about this pond, in different directions, and each only five minutes walk therefrom.

Deer and other game are very abundant here.



ARNOLD RIVER.



LITTLE NORTHWEST.

CROSBY POND.

About half way between the Club House and Chain of Ponds is Crosby Pond, reached either by a six miles tramp on the trail over Louise Mountain, or by buckboard from the Steamer landing on the westerly end of Spider Lake to Cameron's, thence over Arnold Pond, with only a short tramp beyond to Crosby.

The trail over Louise Mountain is not hard, and the buckboard ride to Cameron's is over the King's Highway. But the person who has chosen the mountain trail never forgets the sight which greets the eye, when the height of land is reached, and

there breaks on the vision the distant, limpid, sparkling, shimmering, sun kissed waters of Crosby Pond. The trail has been charming, but this sight forces a realization of De Soto's feelings, when, for the first time, he gazed on the Mississippi.

At this pond is a large roomy camp, well equipped with all cooking utensils and dishes.



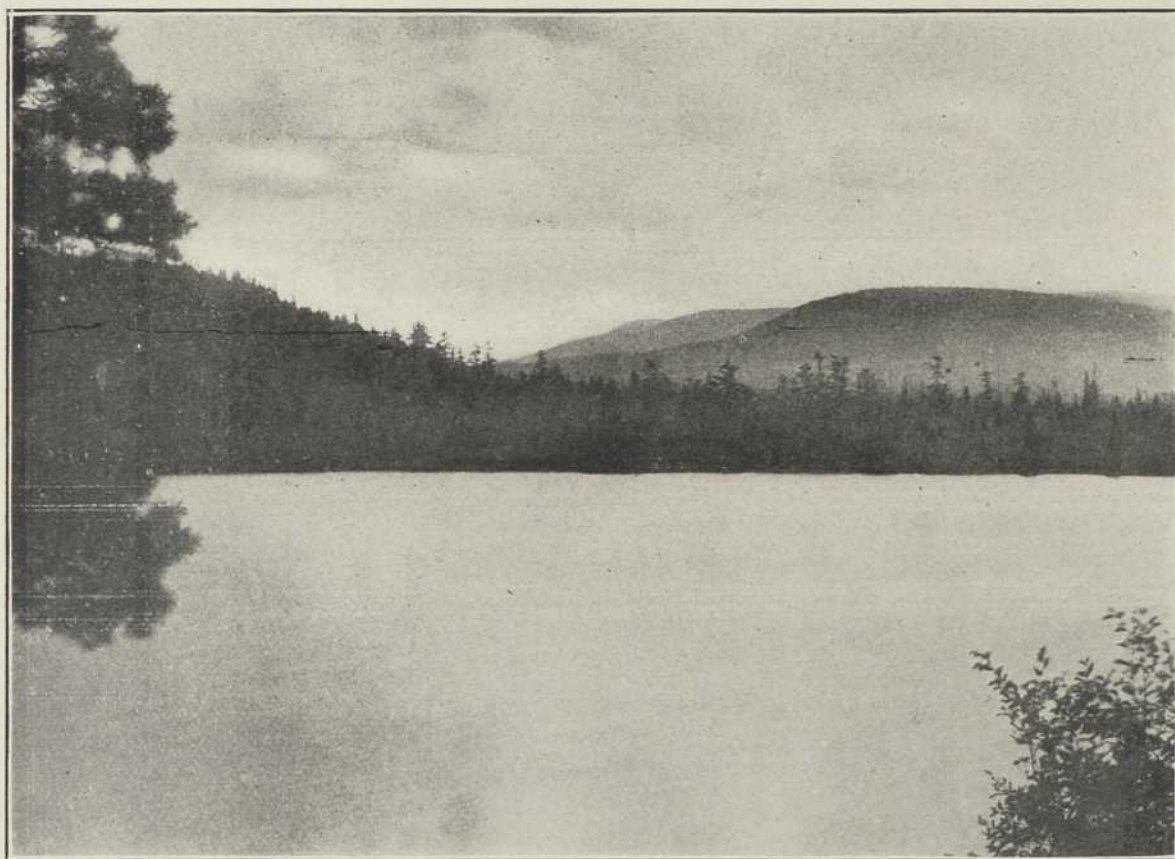
CROSBY POND.

Here are large fish, but they are very wary, and a long cast is necessary.

Deer and other game abound at this place, and in the hunting season this is something of a centre from which raids are made upon Upper and Lower Hathan and Cranberry Bogs, where the fishing is also good.

ARNOLD POND.

This place has grown to be one of the most popular locations on the preserve. Formerly the Corporation had here only a cabin, at which the trailer would make a short stop en route. But within the past few years other cabins and a dining room have been built here, and here four well equipped private camps have been located. Right here, it will be well to state, that no private camps anywhere on the preserve are owned by others than members. At this pond there is a steward who looks after all needs.



ARNOLD POND.

From Arnold Pond it is only a trifle over a mile to Crosby Pond, a very short walk to Mud and Horseshoe Ponds, and Horseshoe Stream; only one half mile to Cameron's; two miles to Massachusetts Bog, and about four and one half miles to Chain of Ponds.

Arnold Pond is reached from the Club House by a seven miles tramp over Louise Mountain, or by buckboard over a good highway to Cameron's, this latter route doing away with all walking, except the one half mile from Cameron's down to the Pond.



HATHAN BOG.

TO THE BROOKS AND STREAMS.

"I wind about, and in and out,
With here a blossom sailing,
And here and there a lusty trout,
And here and there a grayling".

"With many a curve my banks I fet,
By many a field and fallow,
And many a fairy foreland set
With willow, weed and mallow".

"I chatter, chatter, as I flow
To join the brimming river,
For men may come and men may go,
But I go on forever".



CROSBY POND.

MASSACHUSETTS BOG.

If one retakes the trail at Arnold Pond, en route to Northwest and Big Island, he will pass due south by an easy new trail, two miles long through the dense woods and on high land, to Massachusetts Bog. This is a waterway a little over two miles long with an average width of about 300 feet; for nearly its entire



MASSACHUSETTS BOG.

length, it is shallow, with bottom grass. Here trout of a medium size do seem most unwilling that one should go ashore and leave them in the water, and the deer are frequently seen at short range, wading about as they eat the lily.

BIG ISLAND.

“ Is this a dream,
Then waking would be pain,
Oh, do not wake me,
Let me dream again ”.

Big Island Pond is thus named, because of the island in its middle. It is one and one half miles from Grant Pond, is two and one half miles long, and about one mile wide. Its shores are dotted with eleven private camps, while at the southerly end are the Corporation Camps, eleven in all. Here there is a large dining camp, in charge of a steward and stewardess, with the necessary other help. The camps are located upon a slope, which gently declines to the water's edge. Here also is the fish hatchery, and here, last mentioned, but of first importance, is located a cow.

The camps are directly at the base of Snow Mountain. Far away over



BIG ISLAND POND.

this pond, and the localities of Northwest and Megantic Lake, the Boundary Mountains are seen.

In Big Island are caught, at all seasons, large landlocked salmon, lake trout, and the large square tailed brook trout.

From Big Island it is a short five minutes walk to Ell Pond where one, not too particular as to size, will get some of the gamiest fish on the preserve; they are fighters and will average three quarters of a pound or more. Ell Pond is something over a mile long and is alive with fish, while deer and other game and game birds dispute one's right to its waters.

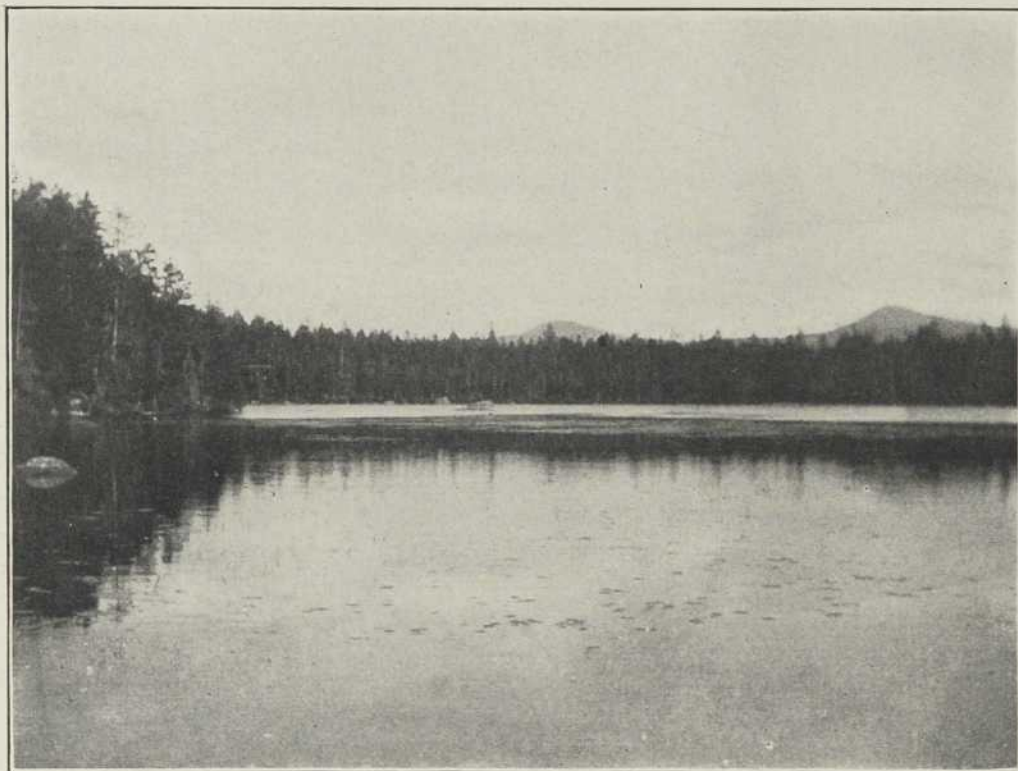
Near the other end of Big Island, five minutes walk from the shore, is Rock Pond, circular in shape and covered

with lily pads, which render it an especially attractive place for deer, of which on an evening one will there see many. Big Island is nearly 3,000 feet above sea level, and is a very popular place with the members.

From Big Island a good buckboard road runs to Alder Stream Farm, connecting there with the highway to Eustis and other places, and by this last named route, many members choose to reach the preserve.



NORTHWEST LANDING



GRANT POND.

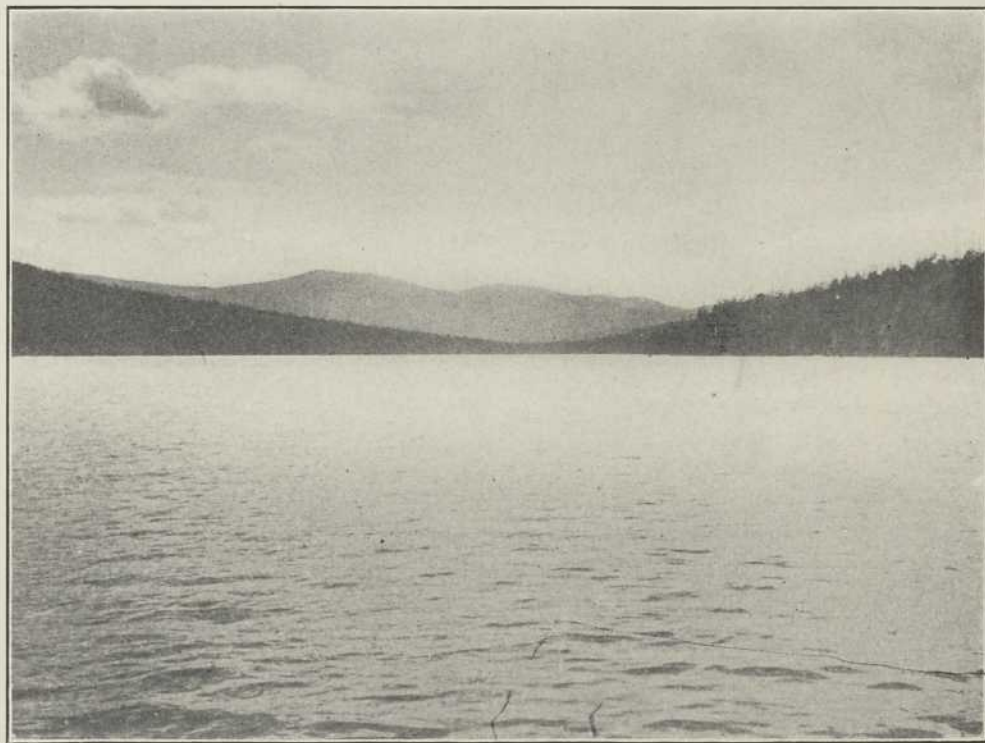
GRANT POND.

Athwart the trail from Big Northwest to Big Island Pond lies Grant Pond. It is only about one third of a mile across, and is round in shape. The water is quite shallow, and for the larger part covered with lily pads; but the skillful angler with a long cast, will here coax up large fish. This pond is on the height of land and is the head of the Androscoggin and Kennebago Rivers.

CHAIN OF PONDS.

A series of ponds, seven in all, are grouped and called as a whole, "Chain of Ponds", linked each to its next by an outlet or inlet.

Long Pond, about two and one half miles in length, is the largest of this chain, and midway thereof, upon the tip of a peninsula which extends well towards the opposite mountainous shore, are located the Corporation's seven camps, in a charming grove of lofty pine, spruce and hemlock. Here are separate dining rooms for members and guides, and a substantial refrigerating house, and here the Corporation maintains a steward and stewardess, and other help requisite for comfort, and here also, is that ne plus



BIG ISLAND POND.



CHAIN OF PONDS.

ultra of luxury in the woods—a cow.

Upon nearby wooded promontories and opposite shores stand six private camps, models of luxurious equipment.

Chain of Ponds is a very popular resort, and the hunting and fishing are of the best. The trout taken from Horse-shoe Stream, and Bear Brook, and the land-locked salmon from the pond, are large and numerous, and deer and smaller game, and the game birds are very abundant.

From "the Chain" delightful trails lead to Big Island, Arnold, Crosby and Secret Ponds, Upper and Lower Hathan Bogs and the Club House.

The Dead River takes its rise from the southerly end of this pond, and at that point the Corporation has recently added to its hunting territory by leasing the "Upper Farm" lands of the



CHAIN OF PONDS.



PRIVATE CAMP—"RUSTICO".

Berlin Mills Com-
pany.

At "the Chain", after a twelve miles buckboard ride from Eustis many members first step upon the preserve, and there many cast their last, fond lingering look upon the Corporation's premises, as homeward bound, their canoe, glides down the now rapid, now deeply mirrowing waters of the Dead River.

Of an evening, on the cabin's piazza, or before its open fire, there

comes to the ear the restful sound of rushing waters, and the whisperings of



INTERIOR PRIVATE CAMP—"SQUANTO".



INTERIOR PRIVATE CAMP—"RUSTICO".

mountain to mountain, and the listener dreamily knows, that

"The night shall be filled with music,
And the cares that infest the day,
Shall fold their tents like the Arabs,
And as silently, steal away".

ARNOLD BOG.

This place is reached over a spotted trail from Big Northwest or Arnold Pond. The fishing and hunting are excellent, but the nine miles of trail is very rough.





CHAIN OF PONDS.

The
season
house
Ma
per da
shall
Arnold
The
order
The
for the
The
Price
The
except
G
publis

The
the Cl
Le
via G
Carab
At
arrang
one re
four pe
The
two an
pleas

The
of Pon
before
is abou

It
list be
this ta
The
8 A. M.
Megan
The
board o
George
service
The
50 cent
The
Boston

EXPENSES ON THE PRESERVE.

The rate of board on the preserve for members and their families will be, this season, \$2.00 per day each. By "family" is meant females who are of members household, and his sons under 21 years of age. The rate for guests, \$2.50 per day.

Members owning camps may board themselves by paying the Club 50 cents per day for each person, with the understanding that as far as possible supplies shall be bought from the Corporation. This rate does not apply to parties in Arnold Bog territory where the Club has no camps.

The fare on the Club steamer is 25 cents for each person, and the member ordering the steamer shall pay for the same whether used or not.

The steamer may be chartered by the hour, the rate therefor being 75 cents for the first hour, and 50 cents for each hour thereafter.

Transportation from Megantic Lake to Spider Lake may be had by team. Price, per trunk, 25 cents.

The price for Guide is \$2.00 per day and board, which is \$1.50 per day, excepting in hunting season, when it is \$2.50 per day.

Guides should be engaged in advance, and a list with post-office addresses is published in The Monthly Bulletin.

ROUTE TO CHAIN OF PONDS.

The direct route to Chain of Ponds to be taken by those not wishing to go to the Club House first is via Eustis.

Leaving Boston at 9.00 A. M., Eustis is reached the same night about 9.20 P. M., via Green's, stopping at Green's Farm House for supper or over night; or via Carabassett and Bigelow, taking the stage from the latter place for Eustis.

At Eustis accommodations are found at the Shaw House, and by *previous arrangement* a buckboard is taken for Chain of Ponds, thirteen miles away, which one reaches in time for dinner. \$5.00 is the charge for a team which will carry four persons.

Team may be arranged for the return, or the trip may be made in canoe, within two and one half miles from Eustis. The latter trip affords a delightful ending to a pleasant vacation.

ROUTE TO BIG ISLAND.

The direct route to Big Island and Northwest is the same as taken for Chain of Ponds, except that the buckboard for the eighteen-mile trip should be engaged beforehand of A. B. Sargent, Prop., Shaw House, and arrival at Big Island is about 4.00 P. M. Charge for the team \$8.00.

TIME-TABLES AND ROUTES.

It is impossible to state definitely the table of the different railroads, but the list below is the time used during the summer season. Members should verify this table before starting on their journey.

The Club steamer leaves the Club House for Three Lakes every week day at 8 A. M. and 2 P. M., connecting with the steamer on Megantic Lake, which leaves Megantic every week day at 8 A. M. and 2 P. M.

Those preferring to make the trip between Megantic and Spider Lake by buckboard can do so by notifying either Wm. Boyle, Jr., Spider Lake, Agnes. P. Q., or George H. Counter, Union House, Lake Megantic, P. Q., in advance. The service is good, prices moderate. The roads have been much improved of late.

The buckboard is running to Cameron's as usual—\$1.50 for one person and 50 cents for each additional passenger.

TRAIN VIA MERRIMAC VALLEY ROUTE, WELLS RIVER AND NEWPORT. Leave Boston ~~1.15 P. M.~~; connect at Lennoxville; arrive Megantic about 2 A. M.

10. A. M.

BY-LAWS.

ARTICLE I. ORGANIZATION.

This Corporation shall be known as the Megantic Fish and Game Corporation.

ARTICLE II. PURPOSES OF ORGANIZATION.

The object of this Corporation is the propagation of fish and game.

ARTICLE III. MEETINGS OF THE STOCKHOLDERS.

The annual meeting of the stockholders shall be held on the fourth Tuesday of February, in the State of Maine, for the transaction of any legal business of the Corporation. Not less than fourteen days' previous notice of the time and place of holding said meeting shall be given by the Clerk or Assistant Clerk, by mailing a notice thereof to each stockholder at his post-office address as of record on the books of the Corporation. Five stockholders shall be requisite to constitute a quorum for the transaction of any business. In the absence of a quorum the meeting shall be adjourned.

Representation of one-fourth of the capital stock shall be necessary for the transaction of any business at the stockholders' meetings.

At all meetings of the stockholders each share of stock shall be entitled to one vote, and said vote shall be cast by the holder, in person or by proxy, within the limitations now or hereafter provided by law.

On any question a stock vote shall be taken upon the demand of any stockholder.

ARTICLE IV. OFFICERS.

The officers of the Corporation shall be a President, two Vice-Presidents, a Treasurer, a Clerk of Corporation, an Assistant Clerk of Corporation (who may be appointed Corresponding Secretary), and a Board of eighteen Directors.

ARTICLE V. THE PRESIDENT.

The President shall preside at all meetings of the Board of Directors and stockholders, and shall be entitled to vote on all questions.

He may call special meetings of the Board of Directors at his discretion, four days' written notice being given, and shall call such meetings when requested in writing by two of the Board.

He shall call special meetings of the stockholders when so requested in writing by a majority of the Board of Directors, or upon request in writing of the stockholders representing one-fourth of the capital stock, fourteen days' written notice of the same being given to each stockholder.

He shall sign, as President, all certificates of stock and all contracts and other instruments which it is necessary to have in writing, and which have first been approved by the Board of Directors.

He shall perform such other duties as are prescribed by law, or may be prescribed by the Board of Directors.

ARTICLE VI. THE VICE-PRESIDENT.

The Vice-President shall preside at all meetings of the Directors or stockholders in the absence of the President.

He shall call special meetings of the Board of Directors upon the written request of two of the Board, four days' written notice having been given the members of the Board of the same.

ARTICLE VII. THE TREASURER.

The Treasurer shall be chosen by ballot at the annual meeting of the stockholders.

It shall be the duty of the Treasurer to receive all moneys of the Corporation, and deposit the same in some bank, to be designated by the Board of Directors.

He shall disburse the same under the direction of the Board, upon an order countersigned by three of its members.

He shall, at the annual meeting of the stockholders, submit a complete statement of his accounts for the past year, with the proper vouchers, together with a correct inventory of the property and effects of the Corporation.

He shall give a bond for the faithful discharge of his duties, in such sum and with such sureties as the Board of Directors shall require.

He shall, in the manner prescribed by the Board of Directors, keep proper books of account, a stock ledger, and a transfer book, showing the residence and post-office address of all the stockholders, and numbers of shares issued to and transferred by any stockholder, and the date of such issuance and transfer.

It shall be his duty to make up an account of the pecuniary condition of the Corporation whenever required by the President or Directors so to do.

He shall have charge of the corporate seal, and affix the same to all instruments requiring a seal.

He shall sign, as Treasurer, all certificates of stock.

He shall discharge such other duties as pertain to his office, and as shall be prescribed by the Board of Directors.

ARTICLE VIII.

CLERK AND ASSISTANT CLERK OF CORPORATION.

The Clerk and Assistant Clerk of Corporation shall be chosen by ballot at the annual meeting of the stockholders, and shall hold office for one year and until their successors are chosen.

It shall be the duty of the Clerk to keep a record of all the meetings of the stockholders and of the Board of Directors, if so requested by them; to notify the stockholders of the stockholders' meetings; to record the votes of the stockholders in a book to be kept for that purpose; and to discharge such other duties as pertain to his office, or may be prescribed by the Board of Directors.

The Assistant Clerk of Corporation shall perform, in the absence of the Clerk, all the duties of that office.

ARTICLE IX.

GOVERNMENT.

The entire government and management of the Corporation shall be entrusted to the Board of Directors.

The Board of Directors shall consist of eighteen stockholders to be elected by ballot at an annual meeting.

The eighteen Directors of the Corporation shall be divided in respect to the time for which they shall severally hold office into three classes, in accordance with number of ballots received.

The first class to be composed of six Directors shall be elected for a period of three years.

The second class to be composed of six Directors shall be elected for a period of two years.

The third class to be composed of six Directors shall be elected for one year.

After the first election and as the terms of office of the Directors then chosen expire the Directors of the first, second and third classes shall be elected respectively for terms of three years.

No Director living within a radius of fifteen miles of the place of meeting of the Board of Directors shall be eligible to re-election the following term who has not attended at least two-thirds of the Directors' meetings in the preceding year, unless his failure to attend is due to sickness or absence from the State.

When any Director ceases to be a stockholder his office shall thereupon become vacant.

The Board of Directors shall at a meeting to be held within thirty days after the annual meeting elect by ballot a President, two Vice-Presidents from among their members.

The meetings of the Board shall be held at the call of the President, or one of the Vice-Presidents, or of three Directors, at such place as may be designated, four days previous notice having been given in writing to each Director.

Five Directors shall constitute a quorum for the transaction of any business.

ARTICLE X.

DUTIES AND POWERS OF THE BOARD OF DIRECTORS.

It shall be the duty of the Board of Directors to call a meeting of the stockholders at any time upon the written request of fifteen stockholders, and fourteen days' written notice of such meeting shall be given to each stockholder.

The Board of Directors shall determine the form of the seal of the Corporation, the certificate of stock, and the transfer thereof.

They shall keep a record of all their proceedings, and shall make a report annually to the stockholders, showing the condition of the Corporation.

They shall audit the accounts of the Treasurer immediately before the annual meeting of the stockholders.

The Board of Directors shall have the management and control of the business of the Corporation and of its property. They may make or authorize all necessary contracts and appropriations. But no contract or appropriation shall be made by them except by a majority vote at a regular meeting.

They shall appoint from their members such committees as they deem advisable.

They shall have the power to accept any resignation and fill all vacancies in their own Board or in the offices of the Corporation for any unexpired term. In case of a vacancy on the Board, the candidate shall be proposed at a regular meeting of the Directors, and due notice be sent to each member that said candidate will be voted upon at the next meeting.

They shall have the power to lease and purchase any and all lands and buildings necessary for the transaction of the business of the Corporation, and to make any rules and regulations, not inconsistent with law or with these By-Laws, which they may deem essential to the good of the Corporation.

They shall have in general all powers not otherwise vested by law or by these By-Laws in the stockholders.

ARTICLE XI. STOCK AND MEMBERSHIP.

The capital stock of the Corporation shall be twenty-five thousand dollars, divided into five hundred shares of fifty dollars par value each. Each member shall be entitled to one share, and one share only, of the stock of the Corporation, and to all the rights and privileges of the Corporation, subject to the By-Laws and such rules and regulations as may be made in accordance with them.

No person shall be admitted a member of the Corporation unless he be the owner of one share of stock, and shall have been proposed by one member and seconded by two others, and shall have been duly elected by unanimous vote of the Directors present at a meeting of the Board, and shall have signed the By-Laws and Rules and Regulations.

ARTICLE XII. ANNUAL DUES.

An assessment shall be levied on the first day of March of each year, but not exceeding in amount thirty dollars in any one year, upon each share of stock, payable within thirty days, to meet the current expenses of the Corporation. Should any member neglect to pay any assessment within said time, he or his representatives or assigns shall be debarred from all privileges of the Corporation until all arrears due from him are paid.

The Board of Directors may sell at auction, to the highest bidder, the shares of any members upon which the annual assessments shall remain unpaid for six months after the same have been levied, first giving fourteen days' notice, in writing, of time and place of said sale, to the delinquent members. If the amount realized from such sale exceeds the sum due from any delinquent member, the balance shall be returned to him upon surrender of his stock certificate.

ARTICLE XIII. DISPOSAL OF STOCK.

Any member or the legal representative of any deceased member, desiring to dispose of his stock, shall offer the same at the market value to the Board of Directors. If they do not desire to purchase, then it may be sold to any person, provided the name of the purchaser shall be submitted in writing to one of the Directors, and his election secured in conformity with Article XI of the By-Laws.

ARTICLE XIV. PRIVILEGES.

The Board of Directors may at any time, by a majority vote, grant the privileges of the Corporation to any person not a stockholder for a term not exceeding three months. They may also elect any stockholder in good standing—who may be deemed worthy and deserving of the honor—a life member, provided that the life membership created in any year shall not exceed one in number. The share of stock owned by any life member shall be exempt from all assessments for annual dues, as provided in Article XII. Such person shall not, however, be freed from the obligation to pay his own bills at the camps or Club House, and shall be subject to the rules and regulations of the Corporation in regard to hunting and fishing.

ARTICLE XV. AMENDMENTS.

These By-Laws may be amended or altered at any meeting of the stockholders, provided that notice of any intended amendments or alterations shall have been given at a previous meeting, or provided that fourteen days written notice has been given to each stockholder that such intended amendment or alteration is to be acted upon at the stockholders' meetings.

RULES.

MEMBERSHIP.

SECTION 1. The President shall annually appoint from the Directors a Committee on Membership to consist of not less than six persons, three of whom shall reside in Boston.

SECTION 2. An applicant for membership shall state in his application his name, occupation and residence, and shall be proposed by a member in good standing and endorsed by two other such members. Applications shall be sent to the Secretary, and by him forwarded to said Committee, and said Committee shall examine into the qualifications and desirability of the applicant. If such application shall be approved in writing by three of said Committee the application shall be considered by the Directors. Unanimous vote of the Directors present and voting at the meeting considering such application shall be necessary to elect to membership.

ANNUAL DINNER.

A dinner of the stockholders of this corporation may be held annually at such time and place as the Directors may determine.

MEMBER.

A member is a stockholder of record.

MEMBERSHIP CARDS.

A membership card shall be issued in each year to each member who has paid his annual assessment for that year and all arrearages. Members shall carry said card with them while upon the preserve of this Corporation, and any member who fails to exhibit such card when required by any member, Superintendent, Game Warden or Steward of this Corporation, shall be debarred the privileges of the preserve. Any member who shall neglect for thirty days to pay any dues, fines or assessments, after the same shall have been levied or imposed, and notice thereof has been mailed to him, shall be debarred from all privileges of this Corporation while such neglect continues, and his name may be posted at the club house.

CONDUCT.

SECTION 1. Any member guilty of conduct unbecoming a gentleman, or a violation of any rule or any law, may be fined or suspended upon the vote of three-quarters of the Directors present at a meeting where such conduct or violation is considered, provided that, before such fine or suspension shall be so voted, there shall have been mailed by the Secretary to such offending member, at least thirty days before such action by the Directors, a notice stating the time and place of such Directors' meeting and the action contemplated.

SECTION 2. A member who has been fined or suspended may be re-instated upon a vote of three-quarters of the Directors present at any meeting considering such re-instatement, provided that notice of such contemplated re-instatement shall have been mailed to the Directors at least seven days prior to such meeting.

DAMAGES.

Injury to the property of the Corporation shall be paid for by the member causing the same. If the injury is caused by a guest or guide, such injury shall be paid for by the member to whom such guest is accredited or by whom such guide is employed.

GUESTS.

SECTION 1. The President shall annually appoint a committee on guests to consist of two members.

SECTION 2. Any member desiring to introduce a guest shall send his own name with that of the proposed guest to the Secretary. If such proposed guest shall be approved by the guest Committee, the Secretary shall forward a permit for said guest and a charge of ten dollars shall be made for such permit.

SECTION 3. The Secretary shall record the names of guests in a book kept for such purpose.

SECTION 4. Guests shall be granted the privileges of the preserve but once, except by vote of the Board of Directors, (see article 15 of the By-Laws).

SECTION 5. The Directors may limit the number of guests.

SECTION 6. A member introducing a guest to the preserve shall be responsible for such guest's observance of the rules of the Corporation.

SECTION 7. By guests are meant males over fifteen years of age not members of stockholders' families.

FIRES.

Members shall take great precaution, especially during the dry season, that no damage may be done by fire. Fires shall be lighted only in the camps, or, only in case of emergency outside, when necessary for cooking or warmth, but never for amusement. All combustible substances, such as dry wood, bark, moss, grass, brush, etc., shall be removed from the immediate vicinity of the fire, so that nearby surroundings shall not be endangered. No fires shall be left alone for any length of time, and all fires shall be extinguished before a locality is left.

BOATS.

SECTION 1. Members shall be responsible for all damage done to boats used by them in fishing or hunting, and shall see that the boats are cleaned and properly housed as soon as brought to land.

SECTION 2. If on any day the number of members desiring to fish shall exceed the number of boats belonging to the Club, the members shall be apportioned to the boats, not to exceed three to each boat; but if the number of members exceeds three to each boat then the privilege to fish shall be decided by lot, unless such members otherwise agree.

SECTION 3. A member, guest or guide who shall neglect or fail to change boats at any place upon the preserve so that at least one boat shall always be left at a landing, shall be fined five dollars, (\$5.00), for each such neglect or failure.

STEAMER.

The Club steamer shall always be used, to the exclusion of other engagements, for the meeting of members and the conveyance of their baggage to and from the carry leading to the steamer on Lake Megantic.

WASTE.

SECTION 1. No member, guest or guide shall commit waste upon any of the premises owned by or leased to this Corporation. No bark shall be stripped or cut from trees suitable for saw-logs. Sufficient wood for fuel shall be allowed to be cut. Members, guests or guides shall not interfere with any logs, booms, boats or tools, or any other property belonging to any of the Corporations lessors.

SECTION 2. For the protection and maintenance of shade about the camps, no member, guest or guide shall cut any wood standing within ten rods of the camp, nor destroy nor injure any trees within such limit.

INDISCRIMINATE SHOOTING.

No member, guest or guide shall use firearms or airguns at the club house or at any camp, except upon a Rifle Range already established or which may hereafter be established by the Board of Directors; or, upon the trail, shall shoot at any mark or object within the line of the trail, or shoot at or wantonly kill birds, squirrels, or other small game.

"At the Club House" shall mean within the vicinity of the club house or camps at the club house, either on land or water.

FIREARMS.

No person shall take to, or have in any part of the club house loaded firearms, and all magazines when so taken shall be empty. No shooting shall occur from any part of the club house, nor from any other building owned or leased by this Corporation; nor from private camps; nor from the Steamer on Spider Lake, when on her regular trips.

CAMPS.

Members and guests on taking their departure from a camp shall leave such camp in a clean condition, with sufficient wood cut and piled therein to last over one night.

CHILDREN.

SECTION 1. Children under the age of fifteen years belonging to members or guests, shall be accompanied by their parents or guardians on all parts of the preserve. No other children under fifteen years of age shall be allowed upon the preserve, except by vote of the Board of Directors.

SECTION 2. Children under such age, and servants shall not be permitted to occupy rooms singly, to the exclusion of members or guests.

SECTION 3. Children under such age shall not use a boat unless with a parent, member, or guide.

DOGS.

No dog shall be allowed in the club house. No dog shall be allowed to run at large upon the preserve. Members keeping dogs at the club house shall be charged a reasonable board therefor.

COMPLAINTS.

All Complaints of members shall be made in writing to the Board of Directors.

POSTING OF RULES.

These rules shall be posted in conspicuous places at the Club House, Arnold Pond, Northwest, Big Island and Chain of Ponds.

FISHING.

SECTION 1. No member, guest or guide shall violate the fishing laws of the State of Maine or the Province of Quebec.

SECTION 2. No member, guest or guide shall kill more fish than he has good reason to believe will be used for food.

SECTION 3. In the so called Seven Ponds region, a member, guest or guide shall not kill more than ten trout or salmon in one day, and upon other parts of the preserve shall not kill more than 50 trout, 10 salmon, or 15 black bass in one day.

SECTION 4. No member, guest or guide shall send or take away from the preserve more than fifteen pounds of trout, land-locked salmon, or black bass, upon any one visit.

SECTION 5. Trout less than six inches, and land-locked salmon less than eighteen inches in length, and black bass less than one pound in weight, when caught in waters owned by or leased to this Corporation shall be returned carefully to the water as soon as caught. If such fish shall die it shall be scored against the member or guest taking the same, and he may re-claim it.

SECTION 6. Members and guests camping together at any lake or stream of the preserve shall not kill more trout than needed to supply the camp with food, and shall see that no fish is wasted or thrown away. When fish are plentiful members and guests shall return to the water as soon as caught all fish under one-half pound. When members or guests have caught sufficient fish for their immediate use they shall stop fishing.

SECTION 7. At Arnold Pond no salmon shall be killed.

HUNTING.

SECTION 1. No member, guest or guide shall violate the game laws of the State of Maine or the Province of Quebec.

SECTION 2. No member, guest or guide shall hunt moose, caribou, or deer, upon the preserve with dogs.

SECTION 3. Members, guests or guide in hunting deer shall use every possible effort to spare the does and to kill only bucks.

SECTION 4. No member, guest or guide shall shoot more than one moose, or one caribou, or two deer on the preserve, either upon the Canadian or the Maine side, in any one season.

SECTION 5. Where a party is camping together no more deer shall be shot than are sufficient to supply the said campers with venison, and great care shall be taken that no deer are shot and their carcasses, or any portion thereof, wasted or thrown away.

SECTION 6. No member shall shoot more than twenty-five partridges upon the preserve in any one week during the season.

GUIDES.

SECTION 1. A member shall be responsible for the conduct of his guide, and any injury to the property of this Corporation caused by a guide, shall be charged to and paid for by the member employing or using such guide.

SECTION 2. A member may take a guide or guides upon the preserve, provided that such guide or guides are acceptable to or have been approved by the Board of Directors.

SECTION 3. Fish or game killed by a guide shall be scored against the member employing or using such guide.

PIANO.

The piano at the club house shall not be played before eight A. M., nor after eleven P. M.

AMENDMENTS.

The Board of Directors may from time to time amend these rules.

MISCELLANEOUS.

SECTION 1. All members occupying tents, or cabins owned by the Corporation, shall board at the club house, or several dining camps of the preserve. Members owning cabins may board themselves by paying a charge of fifty cents per day for each person, and, so far as possible, purchasing supplies therefor from the Corporation.

SECTION 2. Members receiving accounts from the Treasurer and neglecting to pay the same for fourteen days thereafter shall be liable to have their names, with the amount of such unpaid accounts, posted in a conspicuous place in the club house. The name of such member or members may be presented to the Directors for action, and suspension from the privileges of the Corporation and preserve may be voted while such neglect continues.

SECTION 3. The steam launch and boats on Spider Lake shall be had only upon application to the Steward.

SECTION 4. A member shall not employ a guide who will not agree to observe the fish and game laws and the rules of this Corporation.

SECTION 5. Any guide who violates the fish and game laws, or rules of this Corporation, or aids or abets a member or guest to violate the same, shall be debarred from guiding upon the preserve.

SECTION 6. No member, guest or guide shall, on the Upper Spider River, shoot at a mark or at muskrats, kingfishes, cranes, bittern, or other birds (excepting duck, geese and partridges). No jack-lamp shall be used on the Upper Spider River during the month of August.

ENFORCEMENT OF RULES.

The various Stewards upon the preserve shall see that all rules are observed, and shall report in writing any violation thereof to the Board of Directors.

FINES AND PENALTIES.

Excepting as fines and penalties have herein been expressly named, the Directors shall impose such fines and penalties for the breaking of these rules, as to them shall seem fitting.

LIST OF MEMBERS.

- | | |
|----------------------------|--|
| Atwater, H. G., | 43 Cedar, New York, N. Y. |
| Ackerman, M. S., | 107 Crescent Ave., Plainfield, N. J. |
| Andersen, C. P., | Board of Trade Building, Boston, Mass. |
| Aylmer, Hon. Henry, | Sherbrooke, P. Q. |
| Allen, Charles A., | Worcester, Mass. |
| Amundson, John A., | 146 Broadway, New York, N. Y. |
| Bamford, Walter, | Paterson, N. J. |
| Bancroft, John, | Wilmington, Del. |
| Barney, T. F., | Medfield, Mass. |
| Barney—Estate Clarence A., | 195 State, Boston, Mass. |
| Bartlett, F. J., | 110 State, Boston, Mass. |
| Bateman, W. R., | 168 Congress, Boston, Mass. |
| Bishop, Heber, | 4 Liberty Square, Boston, Mass. |
| Boskowitz, Adolph, | 507 Broadway, New York, N. Y. |
| Bristol, A. L., | Charleston, S. C. |
| Bristol, H. D., | 362 6th Ave., New York, N. Y. |
| Brown, Frederick L., | 82 High, Charlestown, Mass. |
| Bryant, Charles M., | 85 Franklin, Boston, Mass. |
| Bryant, Thomas W., | Torrington, Conn. |
| Buckminster, Wm. R., | 53 State, Boston, Mass. |
| Burke, W. E., | Quincy, Mass., (Music Hall.) |
| Butterworth, H. W., | York and Cedar, Philadelphia, Pa. |
| Beardsley, G. W., | Binghamton, N. Y. |
| Barbour, S. L., | 114 Woodland, Hartford, Conn. |
| Barker, Harry C., | Scranton, Pa. |
| Callahan, John H., | Binghamton, N. Y. |
| Camp, Theodore C., | 68 Broad, New York, N. Y. |
| Chapman, L. Dana, | 374 Washington, Boston, Mass. |
| Childs, J. L., | Floral Park, N. Y. |
| Clapp, Dr. D. M., | 130 Commonwealth Ave., Boston, Mass. |
| Clothier, Clarkson, | 801 Market, Philadelphia, Pa. |
| Combes, A. C., | Elmhurst, New York. |
| Cowles, Frederick H., | 249 West 72nd, New York, N. Y. |
| Crane, L. O., | 91 Oliver, Boston, Mass. |
| Crowley, J. E., | 23 Court, Boston, Mass. |
| Cruikshank, Edward A., | 141 Broadway, New York, N. Y. |
| Cumston, C. G., | 871 Beacon, Boston, Mass. |
| Cutler, John W., | Binghamton, N. Y. |
| Clark, A. T., | Newton Centre, Mass. |
| Chapman, A. B., | 142 Duane, New York, N. Y. |
| Curtis, Charles E., | City Bank, New Haven, Conn. |
| Coffin, Arthur D., | Windsor Locks, Conn. |
| Clark, Jas. C. D., | 4 Washington, Medford, Mass. |
| Cokefair, I. W., | 25 Maiden Lane, New York, N. Y. |
| Davis, John O., | Hartford, Conn. |
| Davis, D. D., | 35 Wall, New York, N. Y. |
| Draper, David S., | Wilton, N. H. |
| Drew, Charles R., | Medford, Mass. |
| Drumm, J. F. Le B., | 89 Franklin, Boston, Mass. |
| Dresser, Charles E. Est., | Barristers Hall, Boston, Mass. |
| Dill, Jas. B., | 27 Pine, New York, N. Y. |
| Ensworth, H. H., | 104 Front, Hartford, Conn. |
| Fairbanks, C. H., | West Medford, Mass. |
| Fallon, Frank, | Medford, Mass. |
| Fisk, Leonard D., | Hartford, Conn. |
| Fox, Charles K., | Haverhill, Mass. |
| Foot, Jas. D., | Res. Park, New Rochelle, N. Y. |
| Fish, William G., | 204 Essex, Boston, Mass. |
| Graham, Sinclair, | 82 Beaver, New York, N. Y. |
| Garretson, Garret J., | Elmhurst, N. Y. |

Gibson, G. A.,
 Glasier, Alfred A.,
 Gleason, A. W.,
 Gordon, Dr. John A.,
 Greer, Charles,
 Grozier, E. A.,
 Gibson, Kirkland H.,
 Gallagher, William G.,
 Habich, W. H.,
 Hall, Dr. Walter L.,
 Harvie, Dr. John B.,
 Heald, S. C.,
 Hecht, Summit L.,
 Hodges, Gilbert,
 Hopewell, Frank,
 Houghton, B. R.,
 Howe, B. V.,
 Howe, Frank E.,
 Hardy, C. J.,
 Hastings, W. M.,
 Hartung, Dr. H. H.,
 Howland, Charles A., Jr.,
 Ihm, Adolph,
 Isham, Samuel,
 Johnson, Francis H.,
 Johnson, Stephen F.,
 Kendall, O. F.,
 Kendall, Dr. W. G.,
 Kennedy, H. L.,
 Kent, Benj.,
 Kirkner, G. M.,
 Kellogg, A. B.,
 Lake, James H.,
 Lawrence, W. B.,
 Loring, D. A.,
 Loring, D. A., Jr.,
 Lewis, Charles B.,
 Lockwood, H. B.,
 Livermore, Joseph B.,
 Ludwig, L. A.,
 Lewis, C. C.,
 Mackie, David I.,
 Macleod, W. A.,
 Mansfield, George W.,
 Mason, John W.,
 Mason, W. P.,
 Matthies, G. E.,
 McConnell, Dr. Charles W.,
 Magie, David, Jr.,
 Metcalf, F. L.,
 McCoy, Rev. J. J.,
 McKinney, Edward,
 McQuillen, W. F.,
 Miller, John W., Jr.,
 Miller, Charles,
 Mills, Isaac N.,
 Mitchell, H. F.,
 Mixter, George,
 Morgan, Dr. L. E.,
 Morrell, D. S.,
 Morrell, Daniel,
 Morse, Dr. F. H.,
 Myers, Nathaniel,
 Morganthau, Henry,

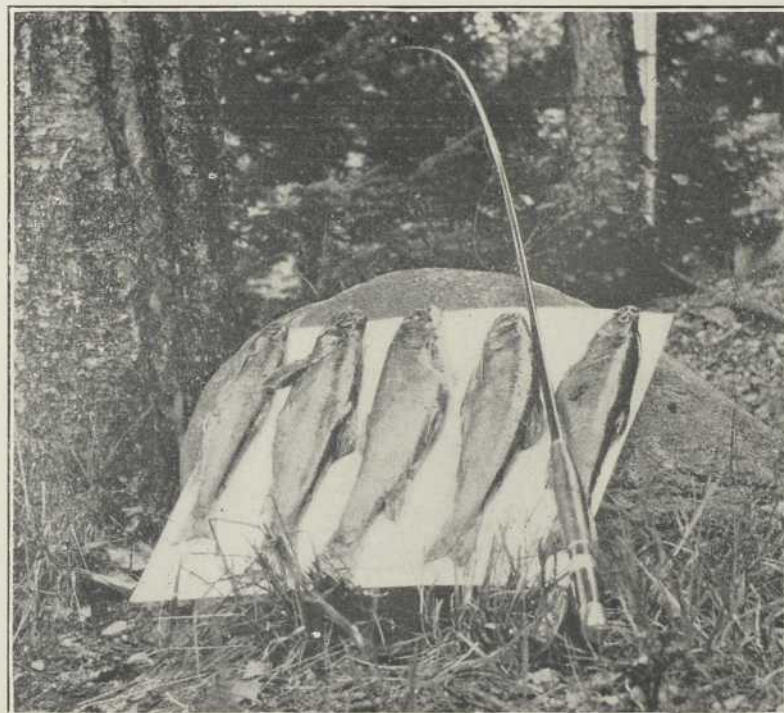
114 Boylston, Boston, Mass.
 Devonshire Building, Boston, Mass.
 29 Liberty, New York, N. Y.
 Quincy, Mass.
 Rye, N. Y.
 Boston Post, Boston, Mass.
 212 Commonwealth Ave., Boston, Mass.
 35 Broad, New York, N. Y.
 174 Highland, Roxbury, Mass.
 Medford, Mass.
 6 Clinton Place, Troy, N. Y.
 48 Congress, Boston, Mass.
 Hecht Building, Boston, Mass.
 Board of Trade Building, Boston, Mass.
 129 Washington, Boston, Mass.
 150 Oliver, Boston, Mass.
 106 Tremont, Boston, Mass.
 215 Broadway, Troy, N. Y.
 108 East 57th, New York, N. Y.
 40 Fulton, New York, N. Y.
 196 Huntington Ave., Boston Mass.
 2 Adams, Quincy, Mass.
 87 Grand, New York, N. Y.
 5 East 61st, New York, N. Y.
 Faneuil Hall Market, Boston, Mass.
 70 Montgomery, Boston, Mass.
 129 Washington, Boston, Mass.
 711 Boylston, Boston, Mass.
 Manhattan Club, New York, N. Y.
 Paterson, N. J.
 60 Broadway, New York, N. Y.
 Hartford, Conn.
 Equitable Building, Boston, Mass.
 Medford, Mass.
 1270 Broadway, New York, N. Y.
 1270 Broadway, New York, N. Y.
 2 Chatham Row, Boston, Mass.
 44 Broadway, New York, N. Y.
 40 Water, Boston, Mass.
 49 Wall, New York, N. Y.
 30 Lyman, Springfield, Mass.
 43 Cedar, New York, N. Y.
 Tremont Building, Boston, Mass.
 Westerly, R. I.
 142 Duane, New York, N. Y.
 142 Duane, New York, N. Y.
 Seymour, Conn.
 171 A Tremont, Boston, Mass.
 Newark Academy, Newark, N. J.
 Plainfield, N. J.
 Chicopee, Mass.
 Binghamton, N. Y.
 138 Federal, Boston, Mass.
 423 Walnut, Philadelphia, Pa.
 Franklin, Pa.
 Mt. Vernon, N. Y.
 1012 Passyunk Ave., Philadelphia, Pa.
 28 State, Boston, Mass.
 1402 Beacon, Brookline, Mass.
 14 Myrtle, Hartford, Conn.
 14 Myrtle, Hartford, Conn.
 Melrose, Mass.
 31 Nassau, New York, N. Y.
 59 Liberty, New York, N. Y.

Nash, N. C.,
 Niccolls, F. A.,
 Noble, Dr. H. S.,
 O'Neill, James,
 Page, I. H.,
 Payne, Dr. G. H.,
 Peters, Charles H.,
 Phelps, G. N.,
 Phippen, E. A.,
 Phipps, Charles L.,
 Pierce, D. C.,
 Piersol, Dr. Geo. A.,
 Porter, Joseph,
 Powers, P. H.,
 Preble, F. F.,
 Prescott, A. L.,
 Prescott, George J. Rev.,
 Perkins, Charles G.,
 Pond, H. O.,
 Powers, J. A.,
 Platt, Willard H.,
 Proctor, G. N.,
 Quimby, W. L.,
 Randall, C. F.,
 Randall, William H.,
 Raymond, George J.,
 Reed, Jas. R.,
 Richards, Charles S.,
 Richards, Jeremiah,
 Richards, W. S.,
 Robbins, Dr. E. D.,
 Robinson, A. W.,
 Robinson, H. W.,
 Rogers, John R.,
 Rolfe, W. A.,
 Rushmore, Robert,
 Ryer, George S.,
 Rider, Thomas J.,
 Sanborn, H. W.,
 Sears, E. H.,
 Seyms, George H.,
 Seyms, Robert M.,
 Sherman, J. T.,
 Simons, J. F.,
 Seaver, L. D.,
 Sanford, Frederick,
 Sibley, J. C.,
 Sisson, William W.,
 Smith, T. J. Dr.,
 Snyder, J. H.,
 Spencer, F. E.,
 Stevens, W. P.,
 Stratton, S. P.,
 Strauss, Charles,
 Sturgis, F. R.,
 Suydam, F. W.,
 Snyder, E. W.,
 Sheahan, Dr. Joseph M.,
 Swain, L. S.,
 Seymour, Edward W.,
 Schutz, Robert H.,
 Straus, Hon. Oscar S.,
 Strenli, A. F. H.,
 Talcott, C. C.,

54 Mason Building, Boston, Mass.
 212 Summer, Boston, Mass.
 Middletown, Conn.
 Binghamton, N. Y.
 Chicopee Falls, Mass.
 118 Commonwealth Ave., Boston, Mass.
 Chenango Forks, N. Y.
 158 St. Paul, Brookline, Mass.
 Old Colony Trust Company, Boston, Mass.
 East Rockaway, N. Y.
 368 Congress, Boston, Mass.
 4722 Chester Ave., Philadelphia, Pa.
 Sperry & Barnes, New Haven, Conn.
 116 Boylston, Boston, Mass.
 114 Trenton, Melrose, Mass.
 90 West Broadway, N. Y.
 6 Huntington Ave., Boston, Mass.
 Hartford, Conn.
 Tenafly, N. J.
 415 2nd Ave., Troy, N. Y.
 17 Murray, New York, N. Y.
 Fitchburg, Mass.
 Ames Building, Boston, Mass.
 Tremont Building, Boston, Mass.
 20 Ryerson, Brooklyn, N. Y.
 356 Washington, Boston, Mass.
 68 Devonshire, Boston, Mass.
 17 State, New York, N. Y.
 87 Grand, New York, N. Y.
 352 West 87th, New York, N. Y.
 50 Congress, Boston, Mass.
 4 Liberty Square, Boston, Mass.
 161 Devonshire, Boston, Mass.
 377 Greene, Brooklyn, N. Y.
 249 West Newton, Boston, Mass.
 Plainfield, N. J.
 20-24 East 20th, New York, N. Y.
 P. O. Box 1409, Springfield, Mass.
 461 Washington, Brighton, Mass.
 964 Asylum, Hartford, Conn.
 Hartford, Conn.
 Hartford, Conn.
 62 Leonard, New York, N. Y.
 The Greystone, Germantown, Pa.
 Old Colony Trust Company, Boston, Mass.
 338 East Front, Plainfield, N. J.
 Franklin, Pa.
 Binghamton, N. Y.
 Valley Falls, R. I.
 128 Pearl, New York, N. Y.
 1144 Chapel, New Haven, Conn.
 564 Washington, Boston, Mass.
 351 Beacon, Boston, Mass.
 141 Broadway, New York, N. Y.
 16 West 32nd, New York, N. Y.
 P. O. Box 858, New York, N. Y.
 27 South William, New York, N. Y.
 Quincy, Mass.
 New Bedford, Mass.
 49 Wall, New York, N. Y.
 97 Elm, Hartford, Conn.
 42 Warren, New York, N. Y.
 966 Hillside Ave., Plainfield, N. J.
 40 Fulton, New York, N. Y.

Taylor, Z.,
 Thorndike, A. L.,
 Traiser, R. E.,
 Travis, F. F.,
 Truman, Henry H.,
 Tufts, Nathan F.,
 Turton, George L.,
 Traiser, C. H.,
 Tibbits, C. H.,
 Tucker, John P.,
 Thompson, John H.,
 Ulman, J. S.,
 Van Boskerck T. R.,
 Voorhis, Jacob,
 Ward, Owen,
 Way, Dr. George W.,
 Webb, F. W.,
 Wells, C. G.,
 Whaples, M. H.,
 Wheeler, W. R.,
 Whitney, Myron W.,
 Whittesley, F. H.,
 Wiggin, Parry C.,
 Wilbur, H. O.,
 Williams, F. P.,
 Williams, S. M.,
 Wolf, B. M.,
 Woodburn, W. C.,
 Woodruff, E. C.,
 Woodruff, I. O.,
 Woodruff, Dr. J. E.,
 Waring, O. G.,
 Whittlesey, Charles W.,
 Wadsworth, Arthur B.,
 Webster, Frederick W.,
 Yalden, James,

249 Stuyvesant, Brooklyn, N. Y.
 50 Ames Building, Boston, Mass.
 125 Court, Boston, Mass.
 43-45 White, New York, N. Y.
 40 Wall, New York, N. Y.
 Charlestown, Mass.
 60 Broadway, New York, N. Y.
 125 Court, Boston, Mass.
 Wallingford, Conn.
 Winchester, Mass.
 864 Chapel, New Haven, Conn.
 53 Exchange Place, New York, N. Y.
 Plainfield, N. J.
 Greenwich, Conn.
 208 5th Ave., New York, N. Y.
 239 Cumberland, Portland, Me.
 52 Elm, Boston, Mass.
 29 Beacon, Boston, Mass.
 Hartford, Conn.
 29 West Houston, New York, N. Y.
 Watertown, Mass.
 Hartford, Conn.
 Ames Building, Boston, Mass.
 237 North Third, Philadelphia, Pa.
 419 Boylston, Boston, Mass.
 143 Liberty, New York, N. Y.
 10 Appleton, Boston, Mass.
 59 Liberty, New York, N. Y.
 Elizabeth, N. J. (81 Broad.)
 97 Reade, New York, N. Y.
 University Club, 5th Ave. and 54th, New York, N. Y.
 Plainfield, N. J.
 281 State, New Haven, Conn.
 9 Pine, Binghamton, N. Y.
 35 Nassau, New York, N. Y.
 32-34 Nassau, New York, N. Y.



DAME, STODDARD & COMPANY.

We carry the largest stock in New England of

FISHING TACKLE

LEONARD,

FORREST,

"HIGH GRADE"

ACME AND

BRISTOL RODS.



FORREST

FLIES

SCOTCH LEADERS

BRAY FLY BOOKS

SNELLED HOOKS.

EVERYTHING FOR THE ANGLER'S USE.

ROD REPAIRING IN OUR OWN FACTORY.

FINE CUTLERY.

Pocket Knives, Hunting Knives and Table Cutlery.

Opera Glasses, Thermometers, Leather Goods, Flasks.

Razors, Razor Straps, Shaving and Toilet Requisites.

PHOTOGRAPH GOODS.

Kodaks, Plate Cameras, Films, Plates and General Supplies.

Developing and Printing.

GOLF, TENNIS, CROQUET.

FANCY HARDWARE.

374 Washington Street, Boston, Mass.

OPPOSITE BROMFIELD STREET.

ILLUSTRATED CATALOGUE FREE.

THE ILLUSTRATIONS IN THIS BOOK

WERE MADE BY THE

James S. Conant Company

125 SUMMER STREET

Boston, Mass.

MAKERS OF FINE HALF TONE PLATES.

TO MEMBERS:—

Before you go to the Preserve, give the Steward at the Club House several days notice, if possible.

CHARLES B. PERKINS & CO.

Importers of Cigars.

Telephone 1186 Main.

36 KILBY STREET, BOSTON, MASS.

FINE GUNS ALL THE PROMINENT ENGLISH AND AMERICAN MAKES.

OTT, JAS. LANG & SON, London, GREENER, PARKER, REMINGTON, L. C. SMITH and all others. "Camping Outfits" of every description, Tents, Blankets, rubber or woolen, Folding Camp Cots, Air Mattresses, Etc., Etc., Etc.



THE CELEBRATED

"SAVAGE" REPEATING RIFLE.

SO NOTED FOR GREAT PENETRATION AND ACCURACY.

also all other Rifles, "Winchester," "Marlin," "Remington," "Stevens" and others. Also "Swedish Leather Jackets," most beautiful garment made, impervious to the cold.

FINE FISHING RODS AND TACKLE.

Split Bamboo, Lancewood and Steel Rods, all varieties.

st Enameled Lines, both English and American make. Silk, Linen and Cotton Lines, the "Dream" Patent Spinner for trolling. Baskets, Hooks, Rod Cases, Wading Stockings, Etc. Agents for "HENRY MILWARD & SONS," Redditch, England, and our Snell Hooks, Leaders, Etc., are made especially for us by these noted manufacturers. Full supply for early lake trolling of Milward's Angler Spinners, Reels, Milward's Phantom Minnows, and Baits of all kinds. Superior quality only and of Highest grade. The new "Liberty Reel," improvement over anything yet made. Send for Catalogue. Send stamp for Catalogue, and Second-hand List of Guns.

WM. READ & SONS, 107 WASHINGTON STREET, BOSTON. Established 1826.

IN GOING 

to MEGANTIC

...Be sure and take the...

MAINE CENTRAL R. R.

via Intervale, The Crawford Notch of
the White Mountains, and Cookshire,
and Can. Pac. Ry., or Dudswell and
Quebec Central Ry., or via Farmington
and Eustis.

The Maine Central Railroad is also the **DIRECT ROUTE** to the Hunting and Fishing found in the

RANGELEY LAKES, BELGRADE LAKES,
MOOSEHEAD REGION, WASHINGTON COUNTY,
AROOSTOOK COUNTY, THE PROVINCES, NEWFOUNDLAND,
and the summer resorts of POLAND SPRING, BAR HARBOR and the Maine Coast.

Send Two-Cent Stamp for Maine Coast Guide, Hunting and Fishing Guide,
Hotel List, Tour Book and Folders.

GEO. F. EVANS, *Vice-Pres. and Gen. Mgr.*, Portland, Me. F. E. BOOTHBY, *Gen. Pass. Agent.*

UNION HOUSE

LAKE MEGANTIC, QUEBEC

...GEORGE H. COUNTER, Proprietor...

Special attention paid to members and guests of the Megantic Fish and Game Corporation. We meet all trains and convey baggage of members and guests to the boat on Lake Megantic, without charge.

Members of the Megantic Club

will find the most satisfactory route to and from their Club Preserve via Farmington and Bigelow, over the **SANDY RIVER AND FRANKLIN AND MEGANTIC RAILWAY.**

Why?

Because it is the shortest, easiest and quickest route to and from the preserve and Boston. Then again, you can stop off en route at any of the other Dead River Fish and Game Resorts.

The Franklin and Megantic Railway has a brand new passenger train equipped for the season of 1904, especially for the benefit of the summer tourists.

For booklet or any special information relative to this route or the attractions of this country, apply to

F. N. BEAL, Superintendent,
Phillips, Maine.

WINCHESTER



MODERN BIG-GAME RIFLES

have an established reputation. They embody every good and up-to-date feature desirable in a sporting rifle. We don't, however, make the quixotic claim that they are adapted for killing bumble bees or sinking battle ships. We know that you can do everything with a Winchester that you can do with any practical rifle made, and do it a great deal better besides. Buy a Winchester and use Winchester make of cartridges, if you want a reliable equipment.

FREE—Send your name and address on a postal card for our 164 page illustrated catalogue.

WINCHESTER REPEATING ARMS COMPANY - - NEW HAVEN, CONN.

Portland & Rumford Falls Railway.

THE RANGELEY LAKES

are the most popular FISHING GROUNDS in MAINE. In number and size, the trout and salmon taken each year from these lakes are unsurpassed in the State.

Good Hotels and Camps throughout the Lakes for the accommodation of SPORTSMEN and TOURISTS.

THE RUMFORD FALLS LINE

runs direct to the Rangeley Region. Only 4½ hours' ride from Portland.

THROUGH PULLMAN PARLOR CARS each way daily, between PORTLAND and OQUOSSOC during the Tourist Season.

TICKETS to all parts of the RANGELEY REGION via The RUMFORD FALLS LINE, on sale at all principal ticket offices in New England and New York. Buy your tickets via this Line.

THE SHORTEST ROUTE.


THE QUICKEST TIME.

It is the Only Line running Through Cars, without change, between PORTLAND and the RANGELEY LAKES.

Time Tables and illustrated booklet mailed free upon request to

R. C. BRADFORD, Traffic Manager,

Portland, Maine.



MAGEE

RANGES & HEATERS

Standard of Quality

MAGEE FURNACE CO. 32 UNION ST.

BOSTON

NEW HOTEL BELLEVUE

BEACON STREET, NEAR TREMONT, BOSTON.

Take Elevated R. R. from either North or South Stations to Park Street.



EUROPEAN PLAN

Rooms \$1.50 Upwards

DOUBLE ROOMS

\$2.50 Upwards

HARVEY & WOOD

New York Office, 3 Park Place.

Telephone 6050 Cort.

Quebec Central Railway.

TOURISTS AND SPORTSMEN

When visiting Megantic should not fail to visit

QUEBEC

The most picturesque, historic and interesting city in North America

From Quebec through Parlor and Sleeping cars are run
without change to

New York, Boston and Portland, Maine

Via the

QUEBEC CENTRAL RAILWAY.

For Time Tables, Tourist Books, Folders and other information apply to

J. H. WALSH,
General Pass. Agent,
Sherbrooke, P. Q.

P. R. Neill, T. P. A.,
Room 80, Union Depot,
Boston, Mass.

F. S. Stocking, C. P. F. A.
32 St. Louis Street,
Quebec.



We aim to meet the wants of men who appreciate style and quality in dress at reasonable prices.

A FEW LEADERS.

SHIRTS

NEGLIGE
BUSINESS
DRESS

Either in stock or made to your order.

UNDERWEAR In every weight and fabric made in union and non-union garments.

HOSIERY In all the newest plain and fancy shades, colors warranted.

GLOVES The "Nickerson" outseam English cut Walking Glove will outwear any other made, sells for \$1.75. Try a pair.

NECKWEAR From silks that are often controlled by us carefully made, and always of exceptional values.

UMBRELLAS A very large and choice assortment with selected handles, for ladies as well as gentlemen.

Our lines are always complete and include many novelties exclusively our own, to which we invite your careful inspection.

345 Washington St.

Nickerson
THE HABERDASHER

Boston, Mass.

SEASHORE, LAKE *and* MOUNTAIN Resorts
of EASTERN & NORTHERN NEW ENGLAND *and* the MARITIME PROVINCES

Illustrated
descriptive pamphlets
(containing complete maps)
have been issued
under the following titles,
and will be mailed
upon receipt of 2¢ in stamps
for each book.

All Along Shore,
Lakes and Streams,
Fishing and Hunting,
Among the Mountains,

Southeast New Hampshire, Merrimack Valley,
Southwest New Hampshire, Lake Sunapee,
Valley of the Connecticut and Northern Vermont, Lake Memphremagog,
The Hoosac Country and Deerfield Valley,
The Monadnock Region,
Central Massachusetts.

SUMMER TOURIST BOOK
 GIVING LIST OF TOURS AND RATES, HOTEL AND BOARDING HOUSE LIST,
 AND OTHER VALUABLE INFORMATION, FREE.

COLORED BIRD'S EYE VIEW from MT. WASHINGTON
COLORED BIRD'S EYE VIEW of LAKE WINNIPESAUKEE } SENT ON RECEIPT OF 6¢ FOR EACH.

Reached by the

Boston
AND Maine
RAILROAD.

FOR ALL PUBLICATIONS APPLY TO
 PASSENGER DEPARTMENT, B. & M. R. R.
 BOSTON, MASS.
 D. J. FLANDERS, Genl. Passr & Ticket Agt.

Portfolios:

NEW ENGLAND LAKES,
RIVERS OF NEW ENGLAND,
MOUNTAINS OF NEW ENGLAND
SEASHORE OF NEW ENGLAND,
PICTURESQUE NEW ENGLAND,
 HISTORIC — MISCELLANEOUS
THE CHARLES RIVER TO THE HUDSON,
 Will be sent upon receipt of 6 cents for each book.

Old Colony Trust Company

Ames Building and 52 Temple Place, Boston, Mass.

Capital . . . \$1,500,000.

Surplus . . . \$5,000,000.

*TRANSACTS A GENERAL BANKING AND
TRUST COMPANY BUSINESS.*

BOARD OF DIRECTORS.

T. Jefferson Coolidge, Jr., *Chairman.*

Gordon Abbott	Chas. E. Cotting	George P. Gardner	Henry R. Reed
Oliver Ames	Philip Dexter	Henry S. Howe	Nathaniel Thayer
C. W. Amory	Eben S. Draper	Walter Hunnewell	Chas. S. Tuckerman
Samuel Carr	George F. Fabyan	George v. L. Meyer	Lucius Tuttle
B. P. Cheney	Fred'k P. Fish	Laurence Minot	Stephen M. Weld
T. Jefferson Coolidge	Reginald Foster	Richard Olney	Henry C. Weston

OFFICERS

GORDON ABBOTT, *President*

CHARLES S. TUCKERMAN, *Vice-President*

JAMES A. PARKER, *Vice-President*

FRANCIS R. HART, *Vice-President*

PIERRE JAY, *Vice-President*

BANKING DEPARTMENT

C. S. TUCKERMAN, *Treasurer*

E. A. PHIPPEN, *Assistant Treasurer*

F. G. POUSLAND, *Assistant Treasurer*

F. M. LAMSON, *Assistant Treasurer*

In charge of Temple Place Office

BOND AND REORGANIZATION DEPARTMENT

E. ELMER FOYE, *Secretary*

TRUST AND TRANSFER DEPARTMENTS


JULIUS R. WAKEFIELD, *Trust Officer*

SAFE DEPOSIT VAULTS

JOSEPH G. STEARNS, *Assistant Secretary*

 **PHILLIPS & RANGELEY** 
MADRID AND EUSTIS RAILROADS



 HE Phillips and Rangeley Railroad now operates a line of fifty-four miles in the best Hunting, Fishing and Summer vacation region in Maine with direct connections from New York and Boston via Portland and Farmington.

Trains on the Eustis Railroad connect at Eustis Junction for Green's Farm, where time is allowed for supper. Thence by Stage over one of the finest roads in Maine to Stratton and Eustis, arriving in Eustis a little after 9 P. M.

Stages from Eustis and Stratton connect daily at Green's Farm with trains for Phillips, Farmington, Portland, Boston and New York, also with trains for Rangeley connecting with the Rangeley Lakes Steamers for all points on the Rangeley, Mooselucmaguntic and Richardson Lakes, making this system the easiest, quickest and pleasantest route to all points in the Dead River Region and all points North and East of the Rangeley Lakes.

This is the ONLY ALL RAIL ROUTE to Rangeley Village situated on Rangeley Lake, where buckboards and teams can be taken for Quimby Pond, Loon Lake, Kennebago and the Seven Pond Camps of Ed. Grant & Son, and the Megantic Fish and Game Club.

For maps, and folders describing any point in this region, or any other information address:

D. F. FIELD,

General Passenger Agent,

PHILLIPS, ME.

THOMAS ROWLAND

Taxidermist

ALL KINDS OF BIRDS AND ANIMALS MOUNTED
A SPECIALTY IN MOUNTING MOOSE, ELK, CARIBOU AND DEER HEADS.
RUGS MADE TO ORDER.

No. 182 SIXTH AVENUE

Near 13th Street.

New York.

REFERENCE MR. J. RICHARDS.

RANGELEY BOATS.

These boats are too well known to need any description here. Any one who has visited the Club Preserve knows them well as they are generally used there.

Prices from twenty dollars to one hundred dollars.

BUILT BY

C. W. BARRETT

RANGELEY, MAINE.

THE SANDY RIVER RAILROAD CO.



Furnishes a Parlor Car on the train leaving Farmington for Rangeley at 4.50 P. M., leaving Rangeley at 11.30 A. M. for Portland and Boston.

Try the SPRING FISHING at Rangeley.

F. N. BEAL, Supt.,
Sandy River R. R., Phillips, Maine.

Baron R. de Luze

Dry-Comet

Champagne.



Shinnecock
Scotch.



The Perfection of Scotch Whisky.

... Send for Price List ...

CAMP, CLUB AND SPORTSMEN'S SUPPLIES.

S. S. PIERCE COMPANY,

—BOSTON, MASS.—

Young & Nickerson

Printers

125 Summer Street

Telephone 242 Oxford

Boston, Mass.

BNQ



C 000 272 037