

Through the Maritime Provinces



By
J. Wesley Swan.

*Received by
G. H. Fisher
Library of the
University of Ottawa
1903*



THE UNIVERSITY OF CHICAGO
LIBRARY

355
S-1
4296

Through the
Maritime Provinces

(New Brunswick and Nova Scotia)

Including the Gaspé Coast, Cape Breton, Prince Edward Island
and a portion of the Province of Quebec

BY
J. WESLEY SWAN
MONTREAL

Through the Maritime Provinces



THE wonderful charm of a cool summer climate, the magnificent scenery and historic associations, the endless variety of tourist routes, the unexcelled wealth of river and forest for the sportsman and angler are yearly attracting to Canada an ever increasing number of summer tourists and travellers, and of these welcome visitors, a goodly number wend their way to the Province of Quebec and the Maritime Provinces. The natural Canadian gateways for travellers to this portion of the Dominion are Montreal, Quebec, St. John, Halifax, and the Sydneys, and it is as a souvenir for visitors arriving at any of these places, as well as for the residents of the different cities, towns and villages situated on the route of the famous "Maritime Express" of the Intercolonial Railway, that this handsome illustrated book has been published. The views shown are reproductions from direct photographs made by the publisher and are only available through this channel.

The City of Montreal being the Metropolitan City of Canada and the western terminus of this great railway system, it has been considered desirable in the arrangement of the illustrations to commence at that city and to include a few of the best views en route from Montreal to the sea. It is manifestly impossible in a production of this nature to do justice to the country traversed, but the publication will give an insight to the many beautiful localities and the picturesque beauties that are to be found in this section of the British Empire.

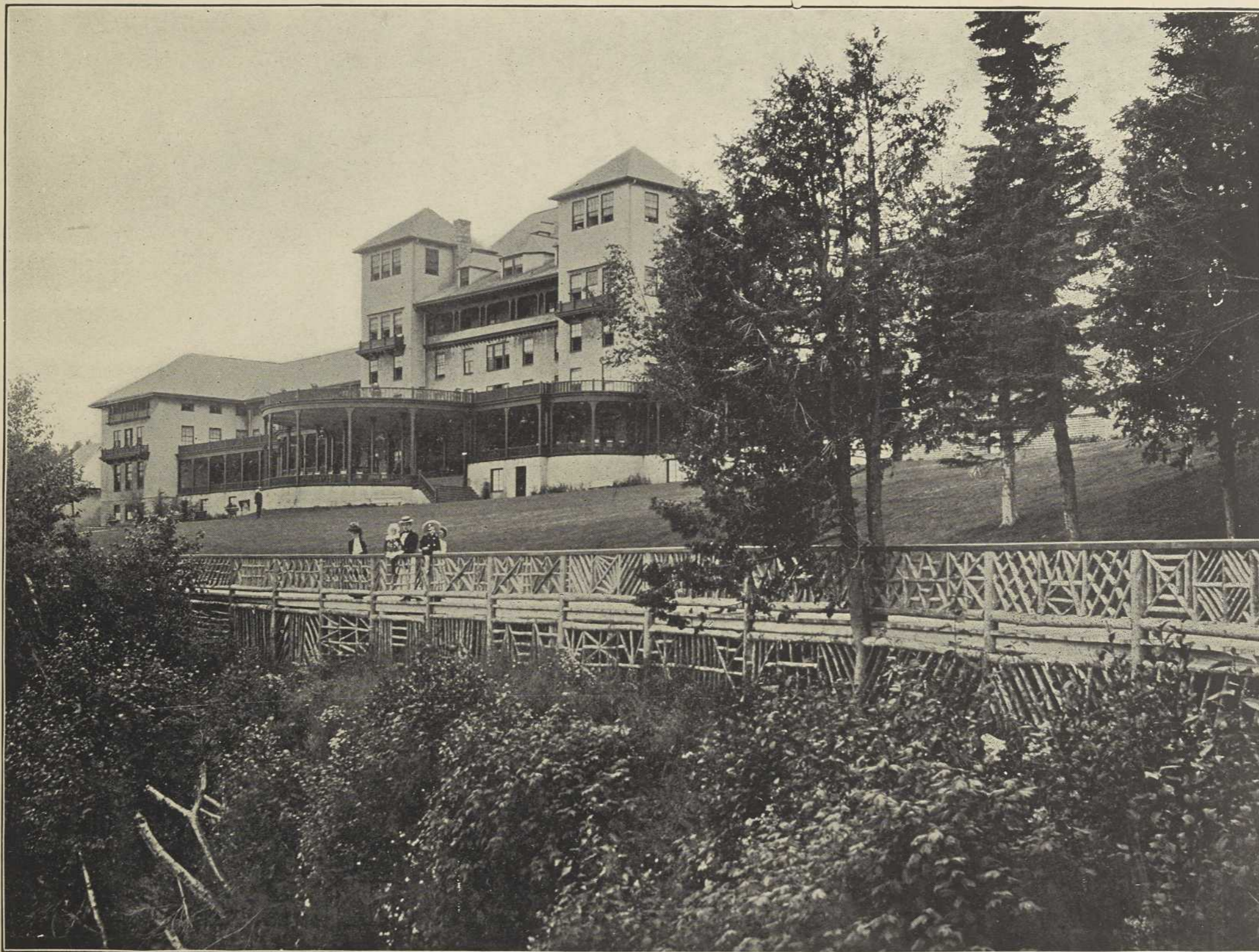
The engravings illustrate the City of Quebec, stretches along the Lower St. Lawrence, and on through the picturesque Metapedia Valley. It also portrays the shore of the famed Baie de Chaleur and gives pretty vistas through New Brunswick and Nova Scotia to the historic city of Halifax, including the most important points in the Maritime Provinces, the City of St. John, the Sydneys, that summer paradise Cape Breton, and Prince Edward Island—the Garden of the Gulf. Embraced in this territory is such a variety of attractions that the requirements of all travellers may be met, and once here what more suitable souvenir can be secured than the booklet entitled "Through the Maritime Provinces"?



CITY OF QUEBEC, FROM LEVIS



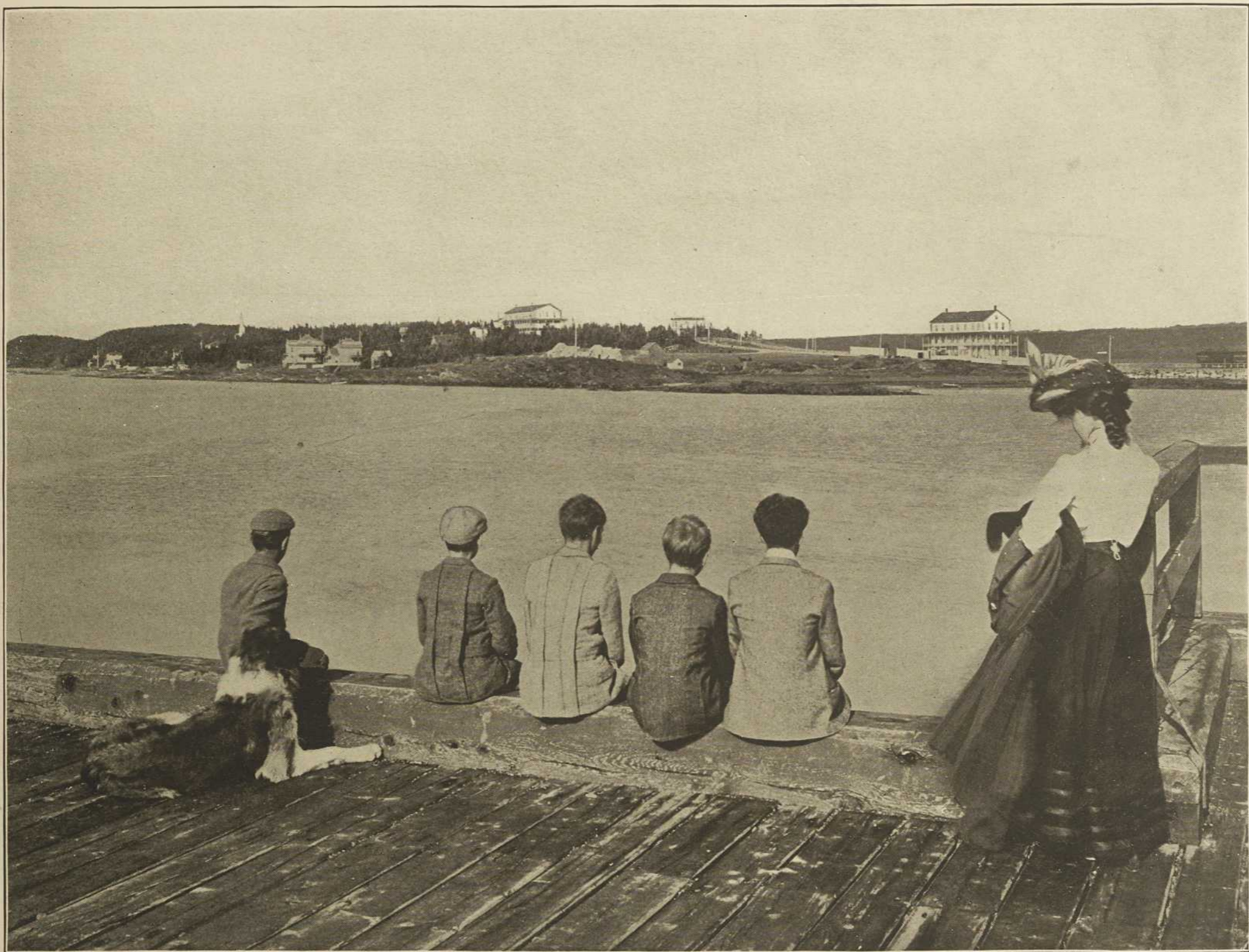
MURRAY BAY, QUEBEC



MANOIR RICHELIEU, MURRAY BAY, QUEBEC



TADOUSAC, SHOWING SAGUENAY RIVER



RIVIERE DU LOUP, PROVINCE OF QUEBEC



BATHING BEACH, CACOUNA, QUEBEC



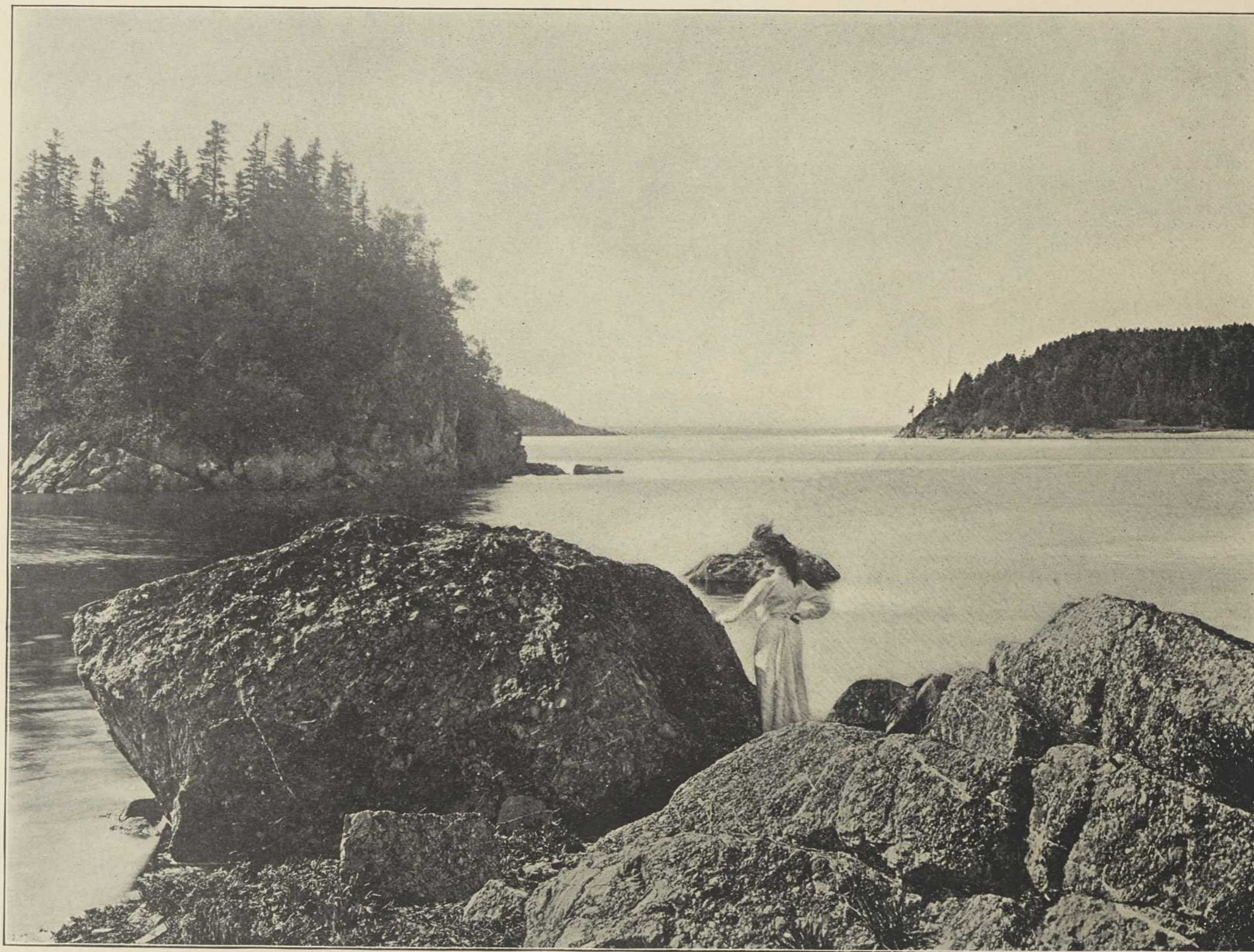
SAND PEEPS, CACOUNA, QUEBEC



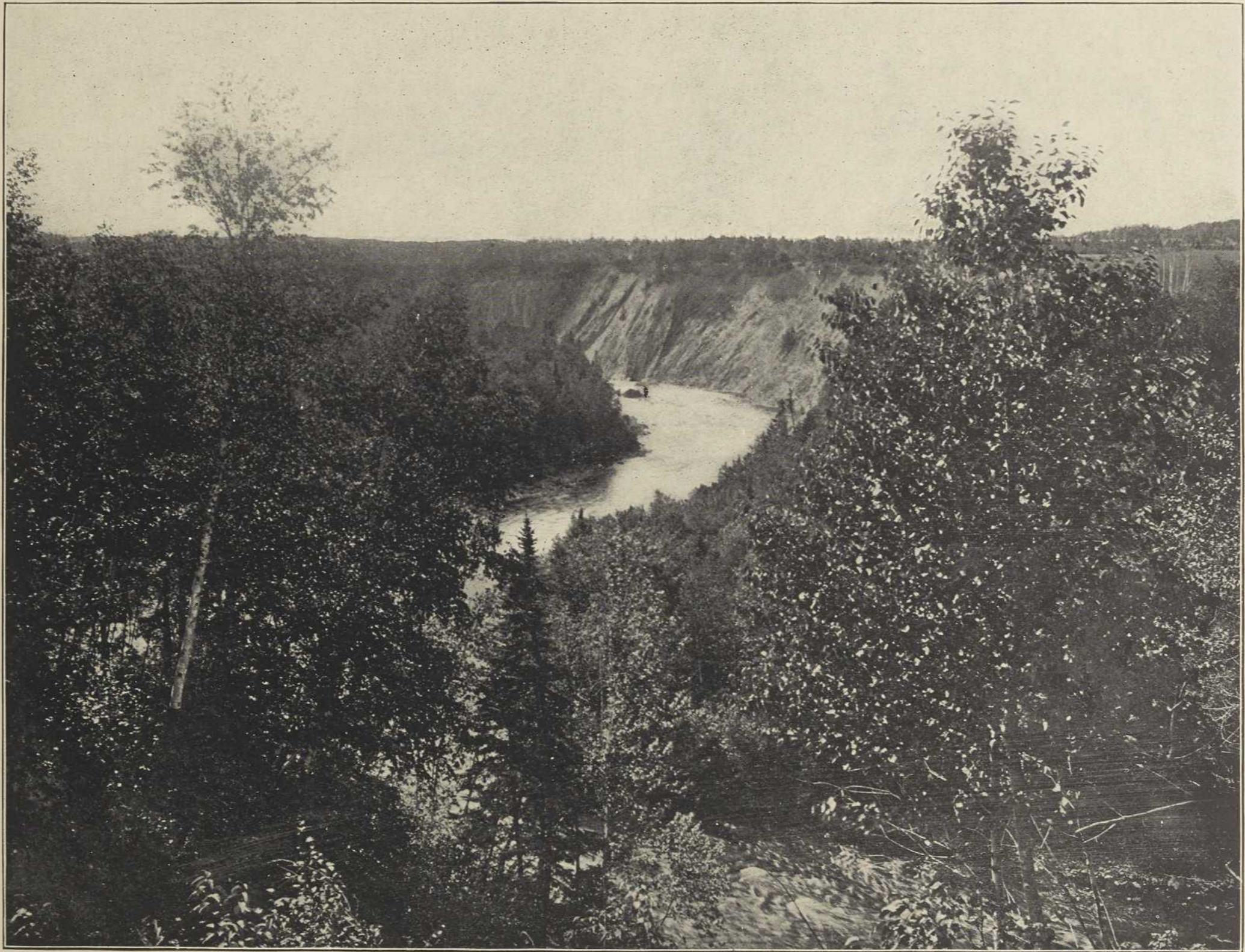
PICTURESQUE VISTA FROM BIC THE BEAUTIFUL, QUEBEC



SUMMER HOMES AT BIC THE BEAUTIFUL, QUEBEC



AT BIC THE BEAUTIFUL, QUEBEC



GRAND RIVER, LITTLE METIS, QUEBEC



GRAND FALLS, LITTLE METIS, QUEBEC



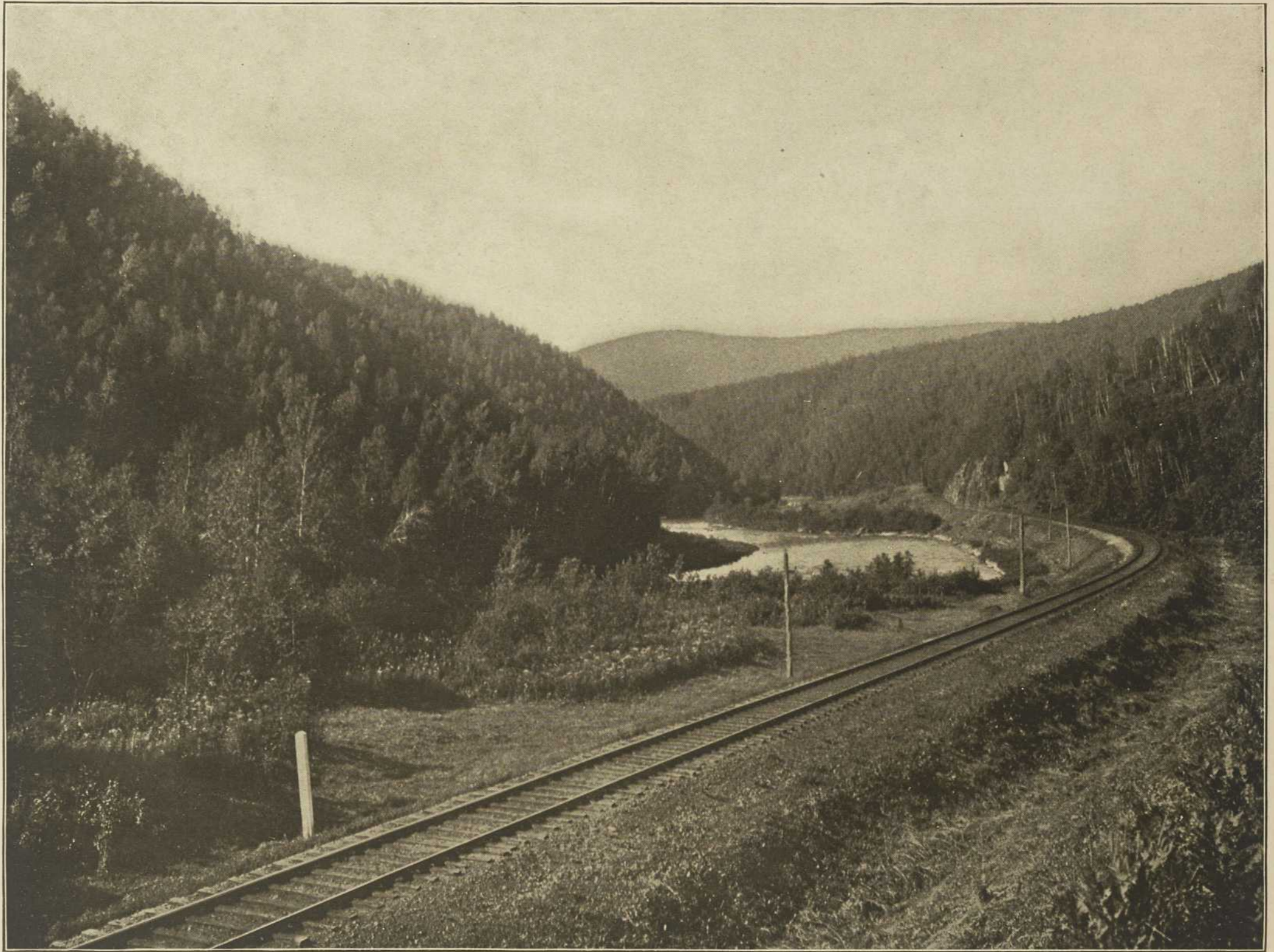
GOLF LINKS, LITTLE METIS, QUEBEC



SALMON STREAM, METAPEDIA VALLEY



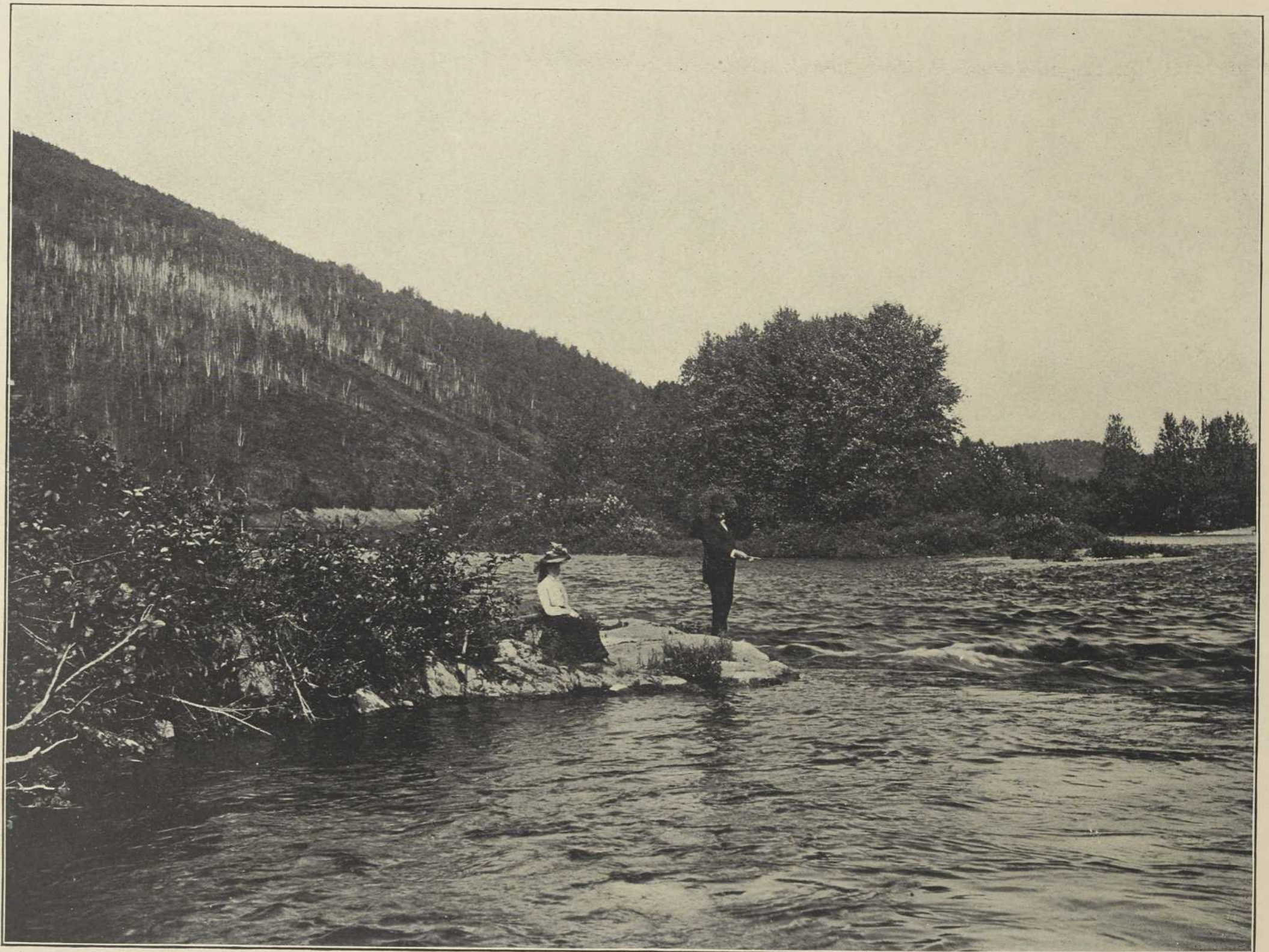
THROUGH THE METAPEDIA VALLEY



THROUGH THE METAPEDIA VALLEY



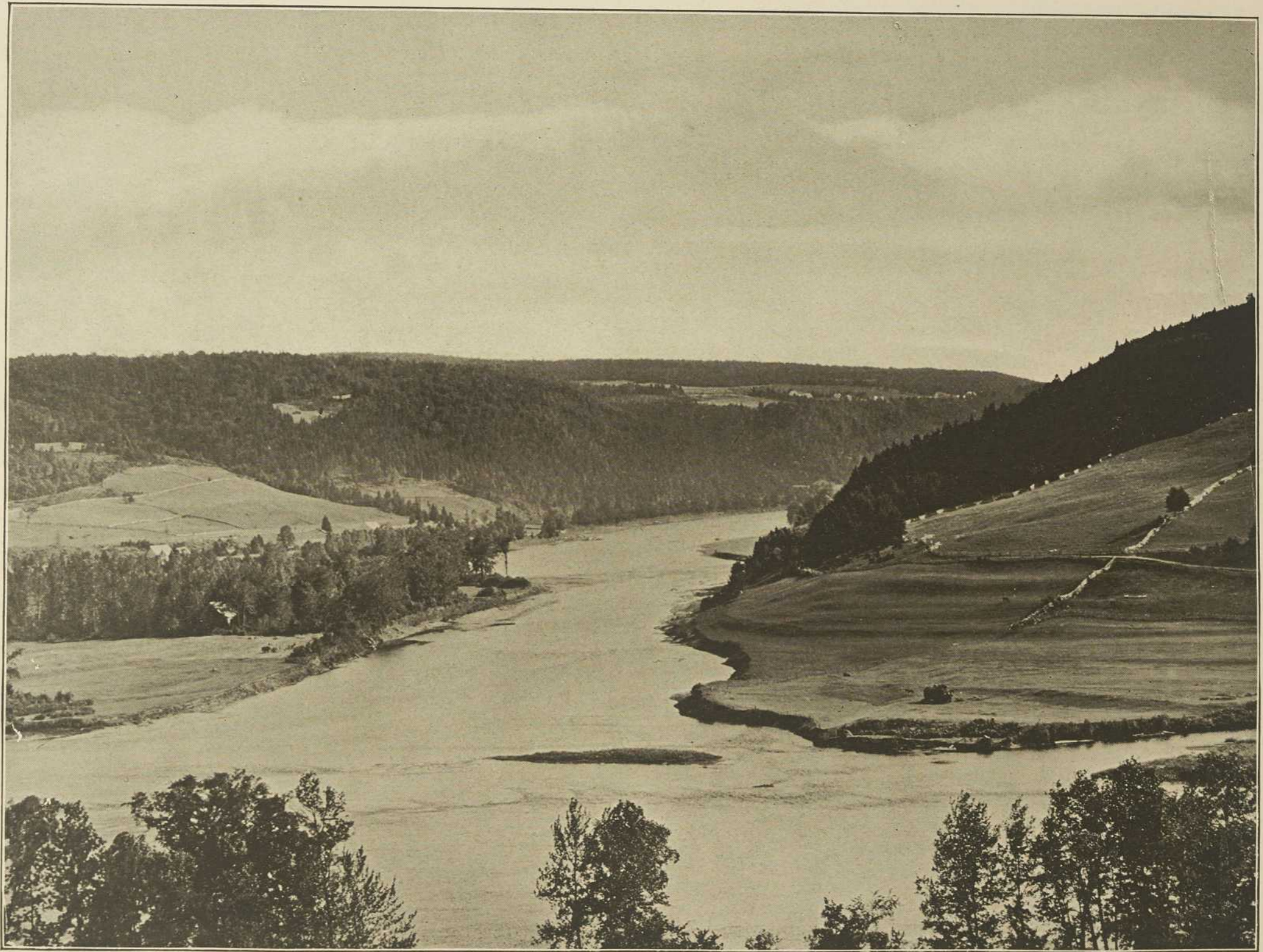
TROUT STREAM, TRIBUTARY TO THE METAPEDIA



TROUT FISHING, METAPEDIA RIVER



SALMON FISHING, METAPEDIA RIVER



THE MEETING OF THE WATERS, RESTIGOUCHE AND METAPEDIA RIVERS



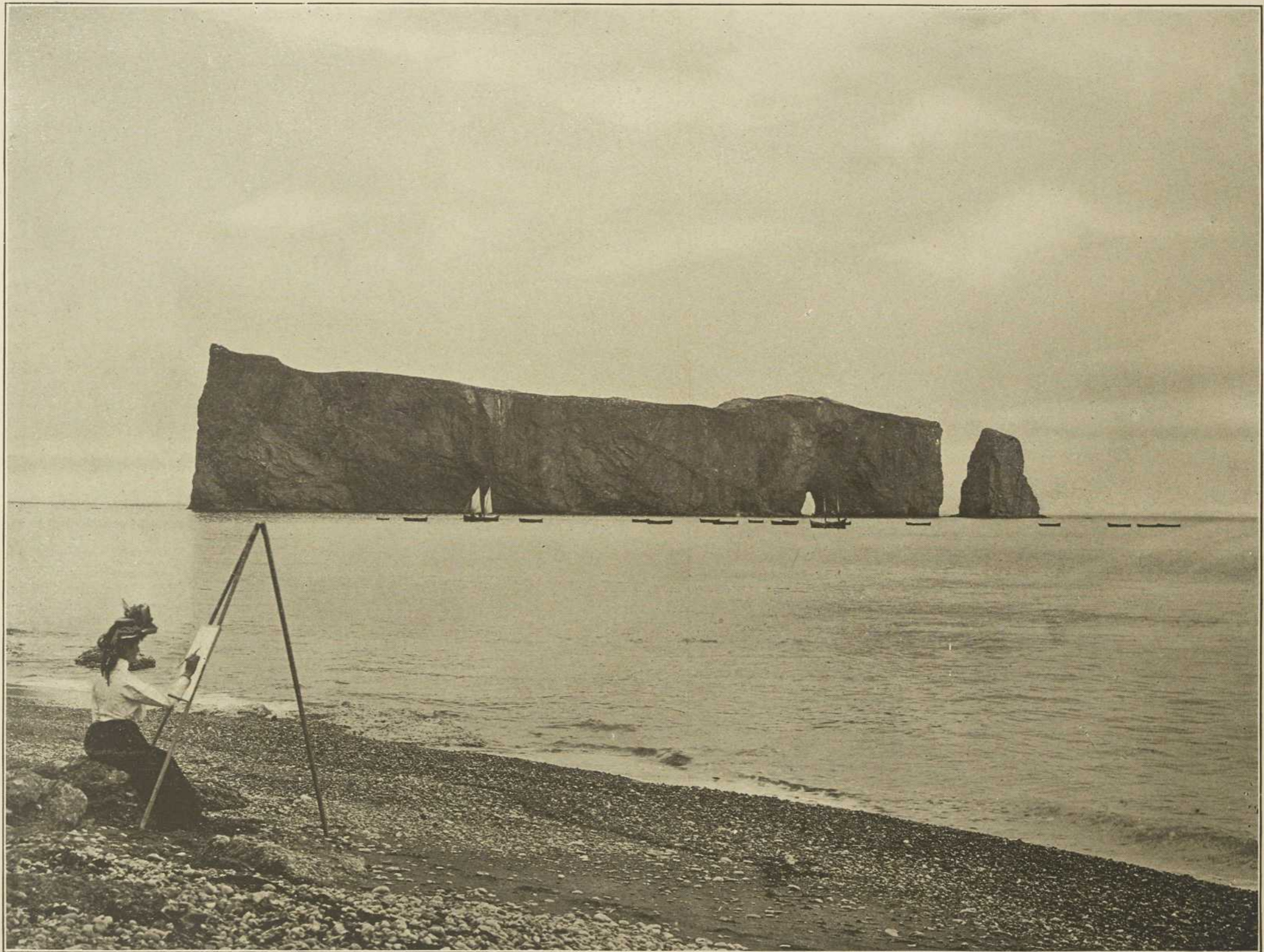
MORRISSEY ROCK, NEAR CAMPBELLTON, N.B.



PORT DANIELS, GASPE COAST



PERCÉ ROCK, GASPE COAST



PERCÉ ROCK, GASPE COAST



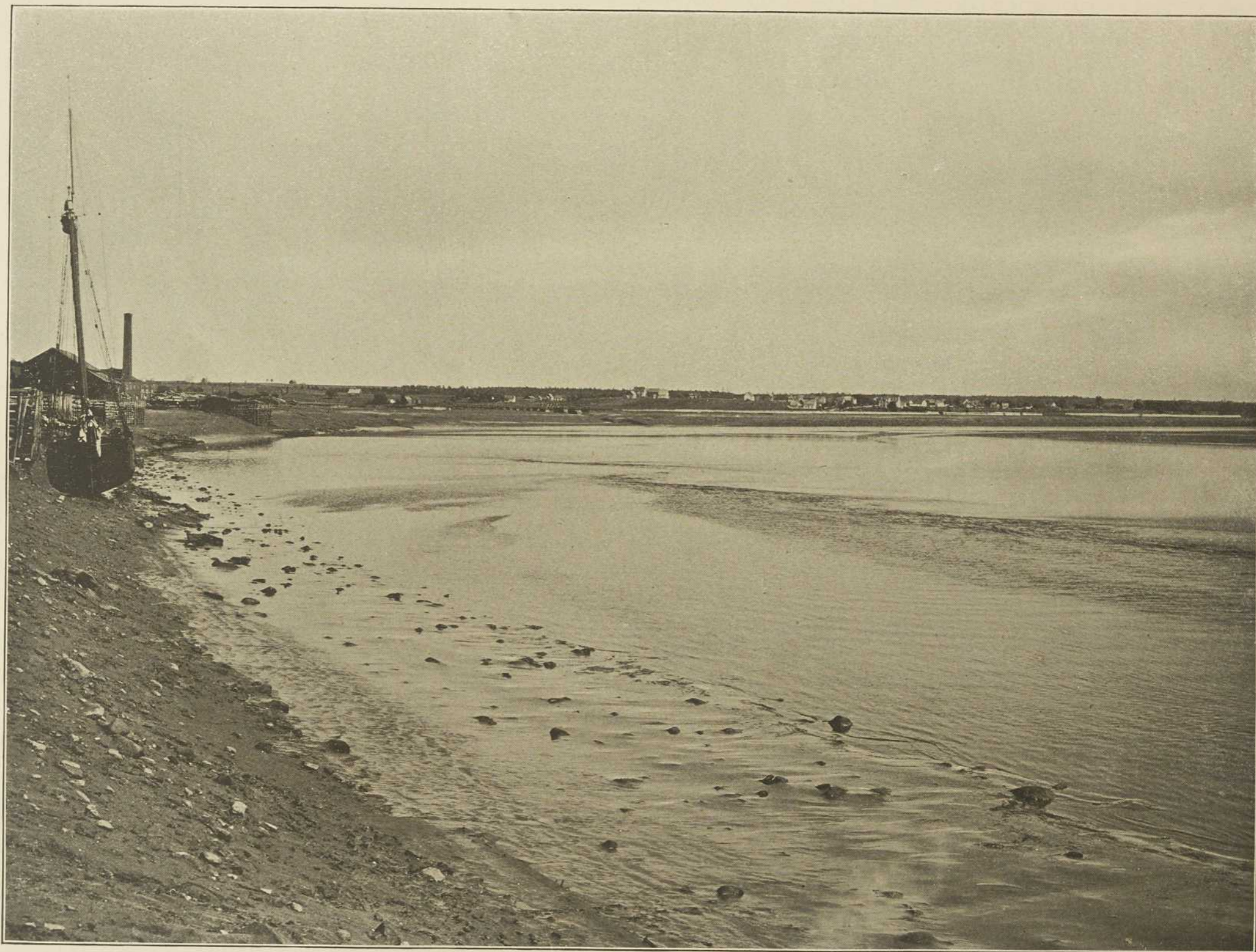
GASPE BASIN, PROVINCE OF QUEBEC



GASPE BASIN, PROVINCE OF QUEBEC



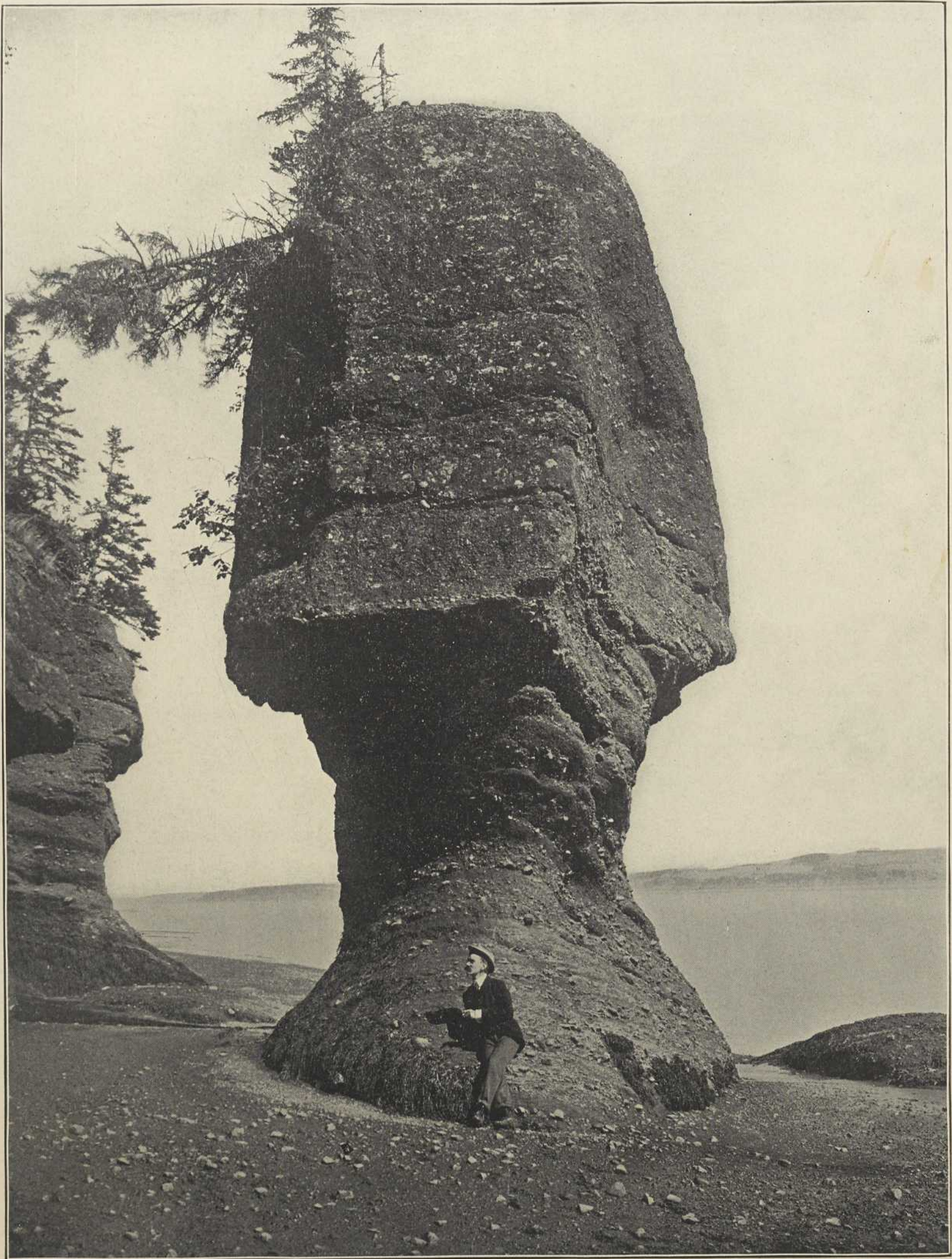
ON THE NEPISEGUIT, BATHURST, N.B.



PETITCODIAC RIVER AT LOW TIDE, MONCTON, N.B.



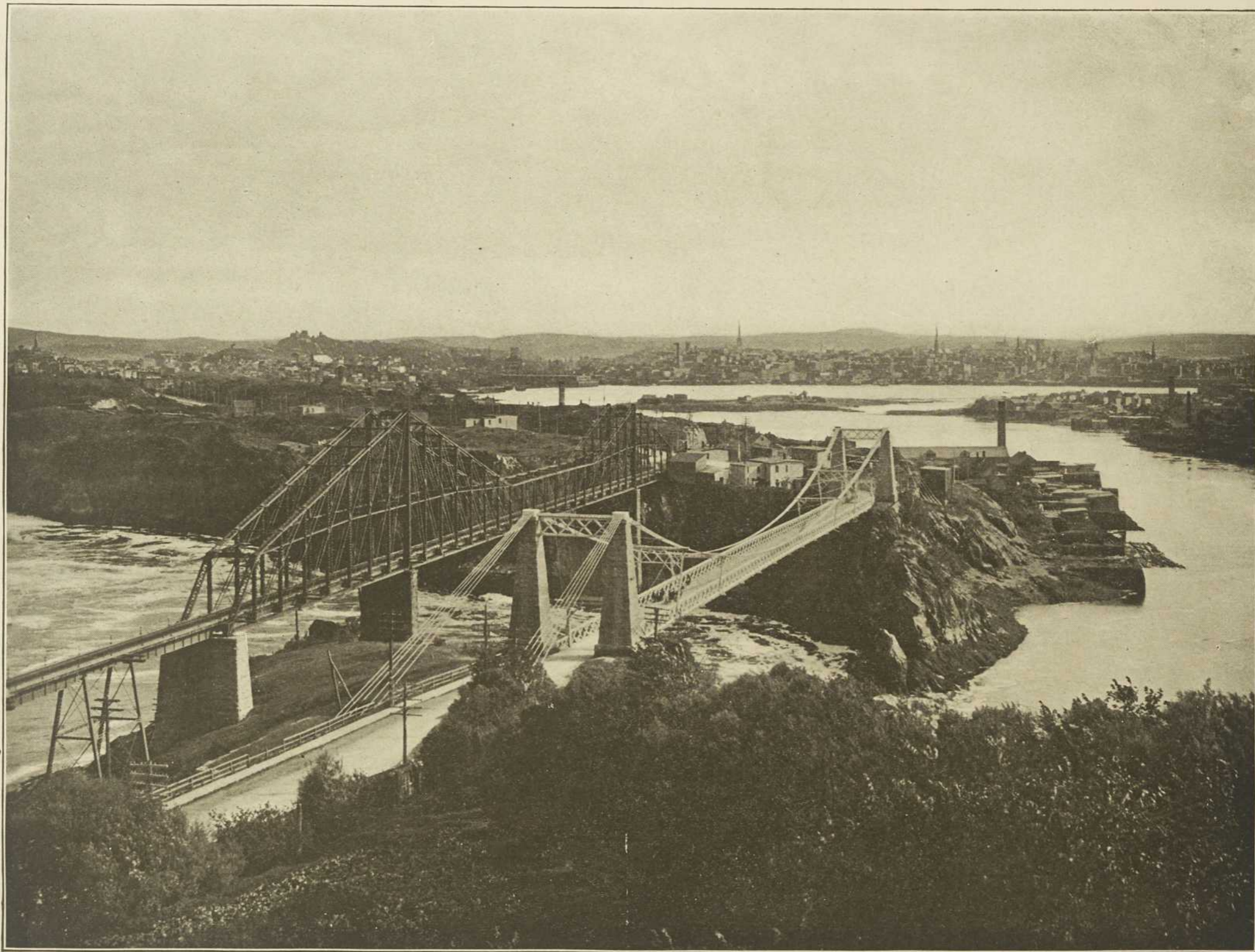
PETITCODIAC RIVER, TIDAL WAVE APPROACHING, MONCTON, N.B.



ROCKS AT HOPEWELL CAPE, NEAR MONCTON, N.B.



HAMPTON VALLEY, NEAR ST. JOHN, N.B.



REVERSING FALLS (TIDE GOING OUT), ST. JOHN, N.B.



MARTELLO TOWER, ST. JOHN, N.B.



ROCKWOOD PARK, ST. JOHN, N.B.



SURF BATHING, ST. JOHN, N.B.



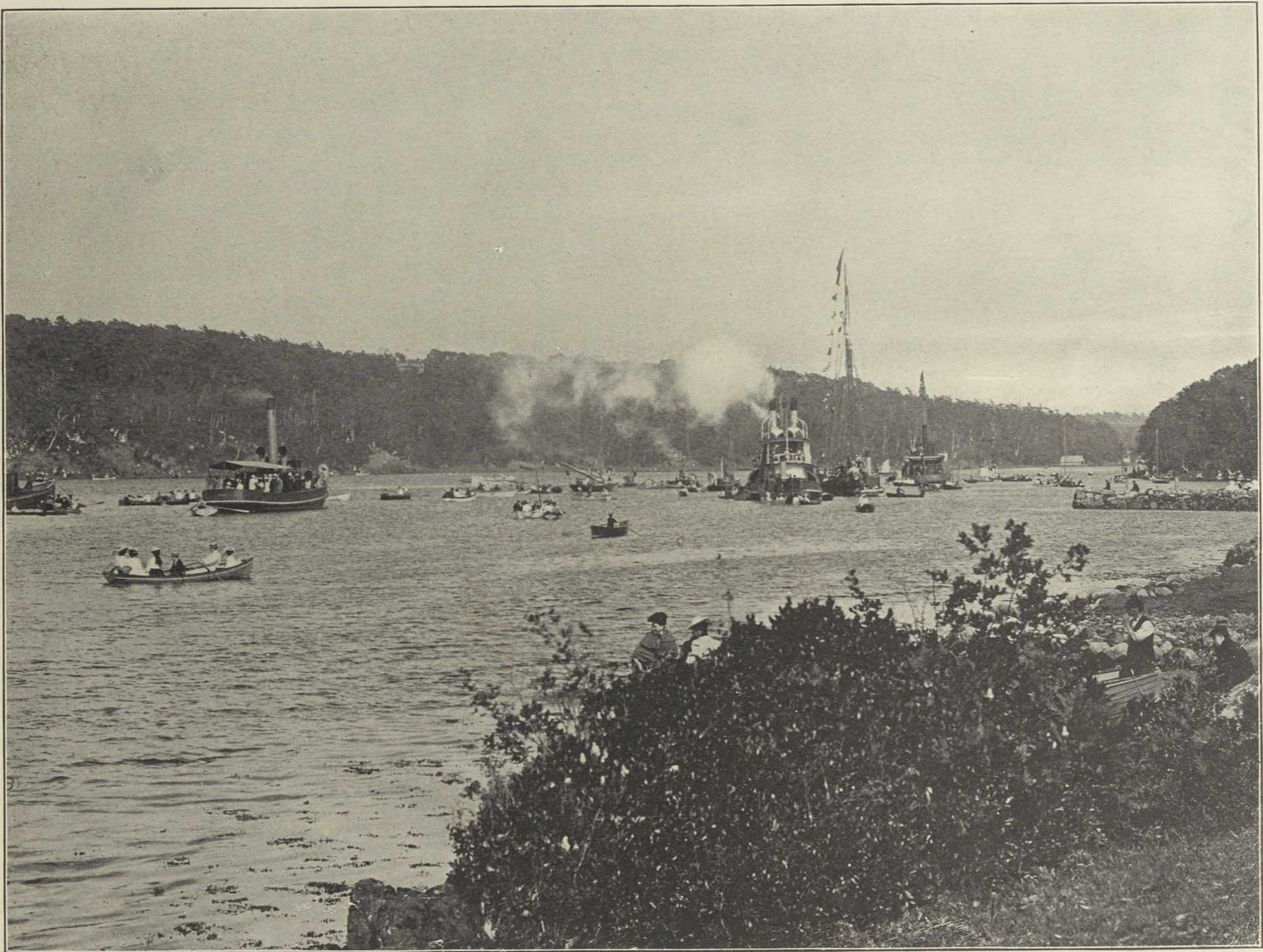
SURF SCENE AT HALIFAX, N.S.



PUBLIC PARK, HALIFAX, N.S.



IN POINT PLEASANT PARK, HALIFAX, N.S.



REGATTA, HALIFAX, N.S.



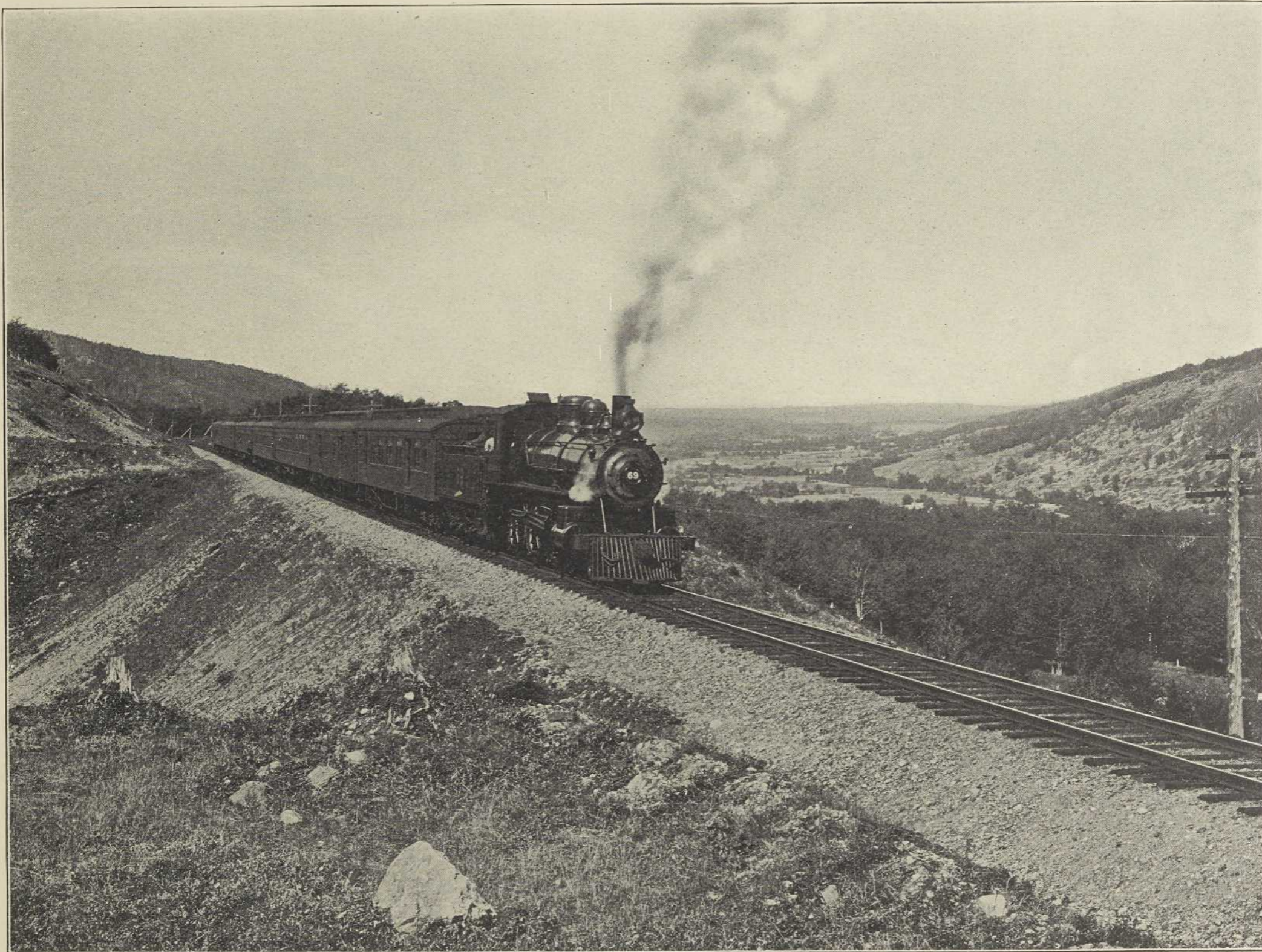
PUBLIC PARK, HALIFAX, N.S.



JOE HOWE FALLS, TRURO, N.S.



FOLLEIGH LAKE, NEAR TRURO, N.S.



MARITIME EXPRESS, WENTWORTH VALLEY, N.S.



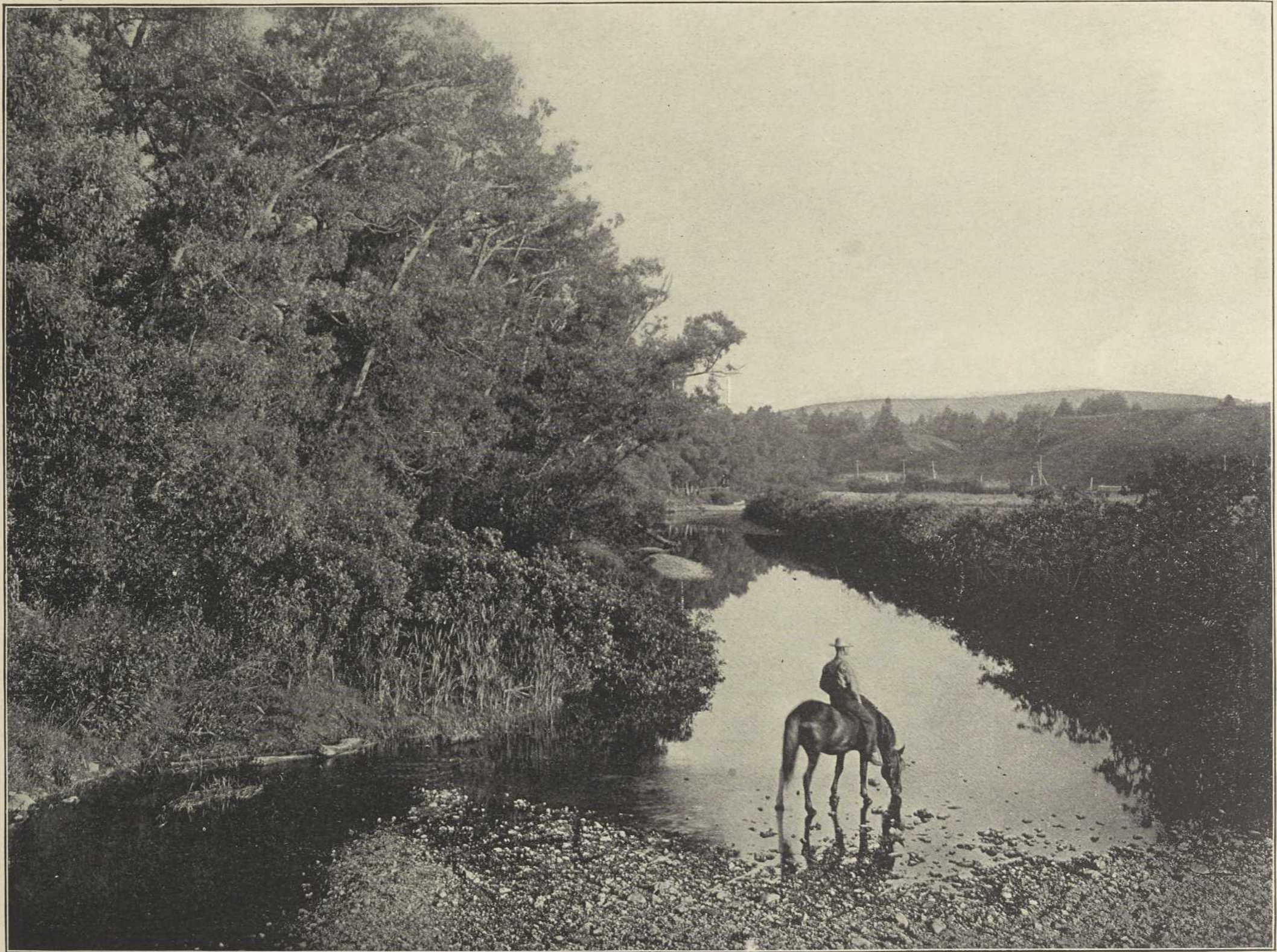
ALONG THE BEACH, NEAR PICTOU, N.S.



SURF, AT PICTOU, N.S.



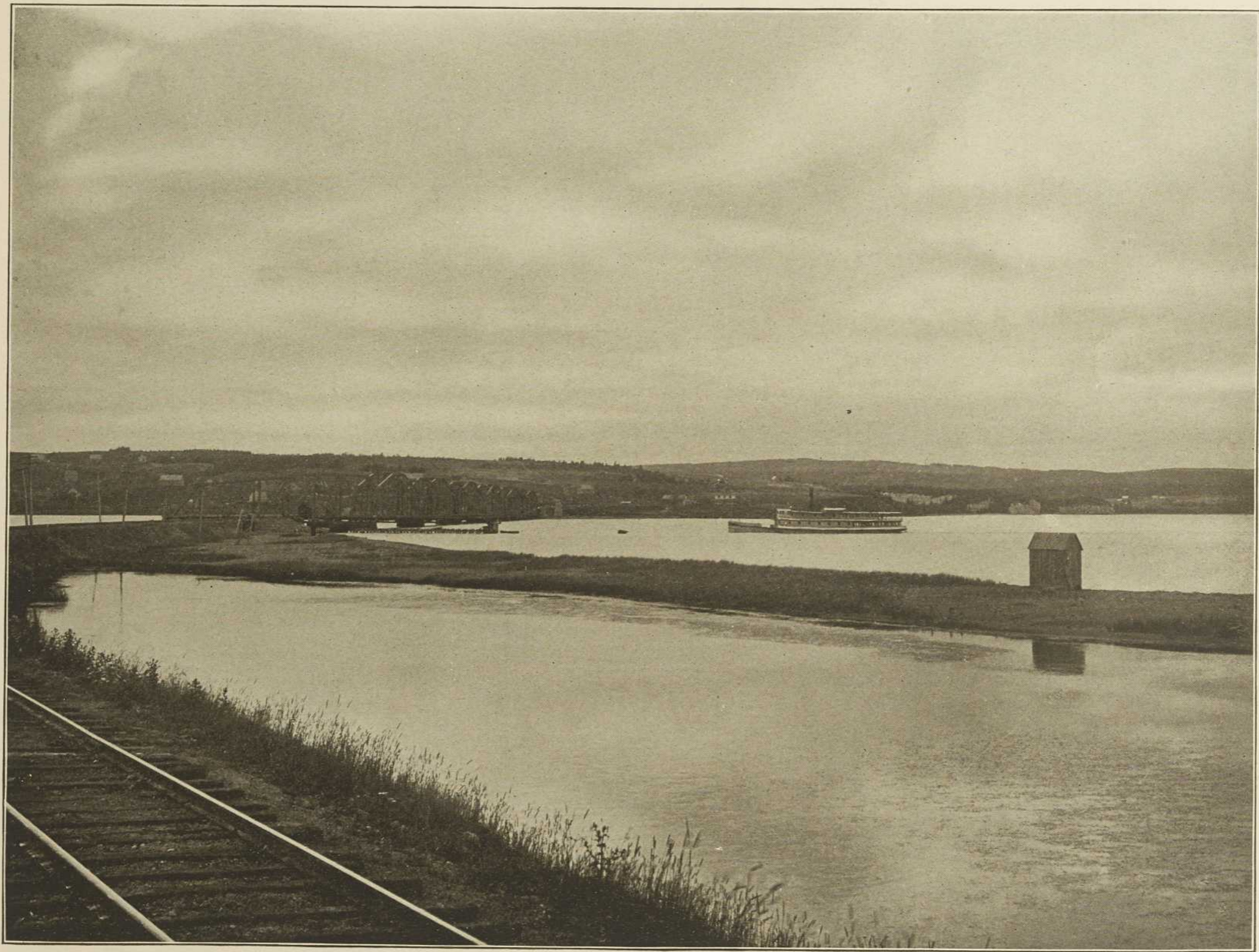
ENTRANCE TO PICTOU HARBOR, N.S.



NEAR ANTIGONISH, N.S.



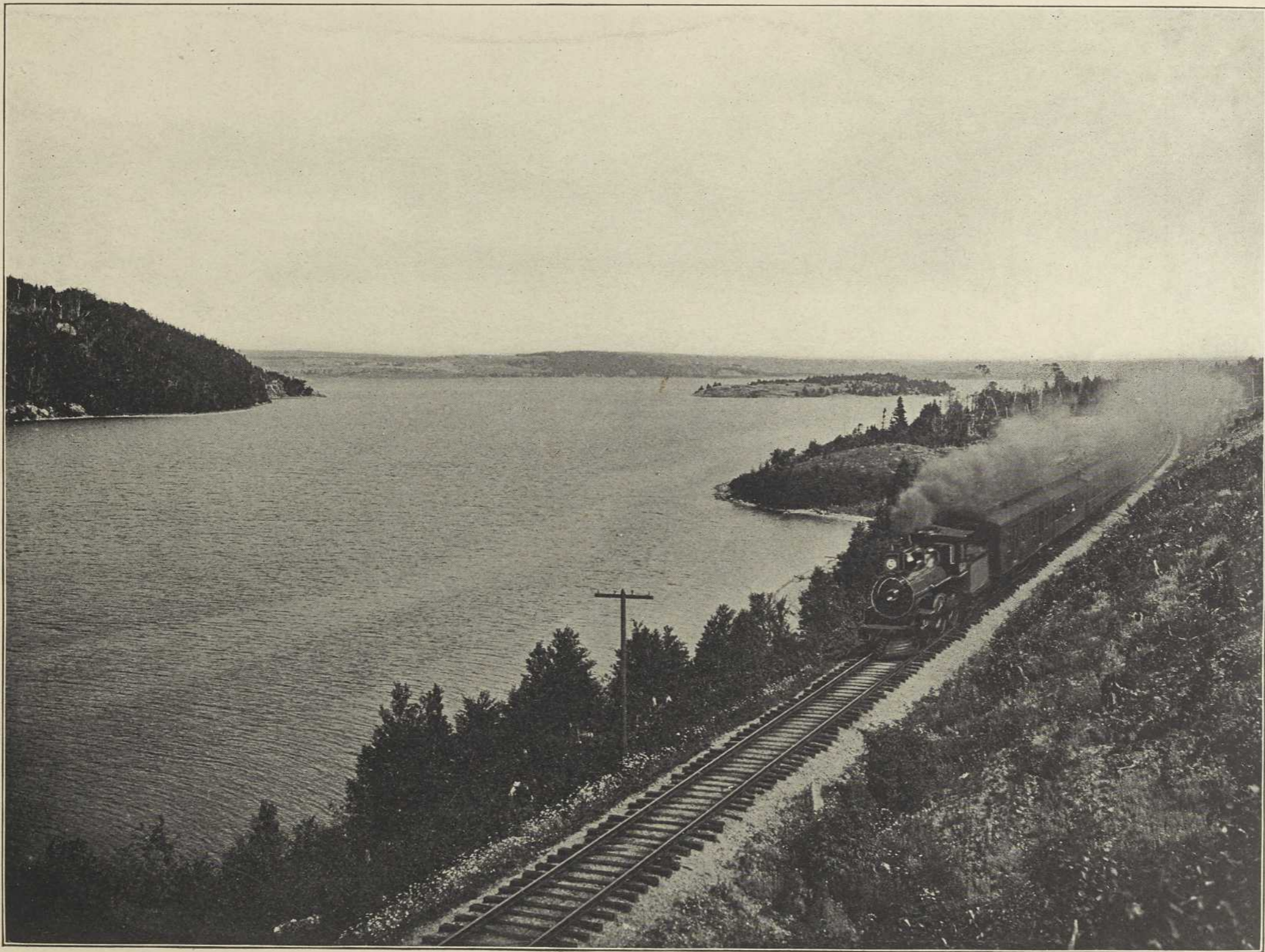
WHYCOCOMAGH, CAPE BRETON, N.S.



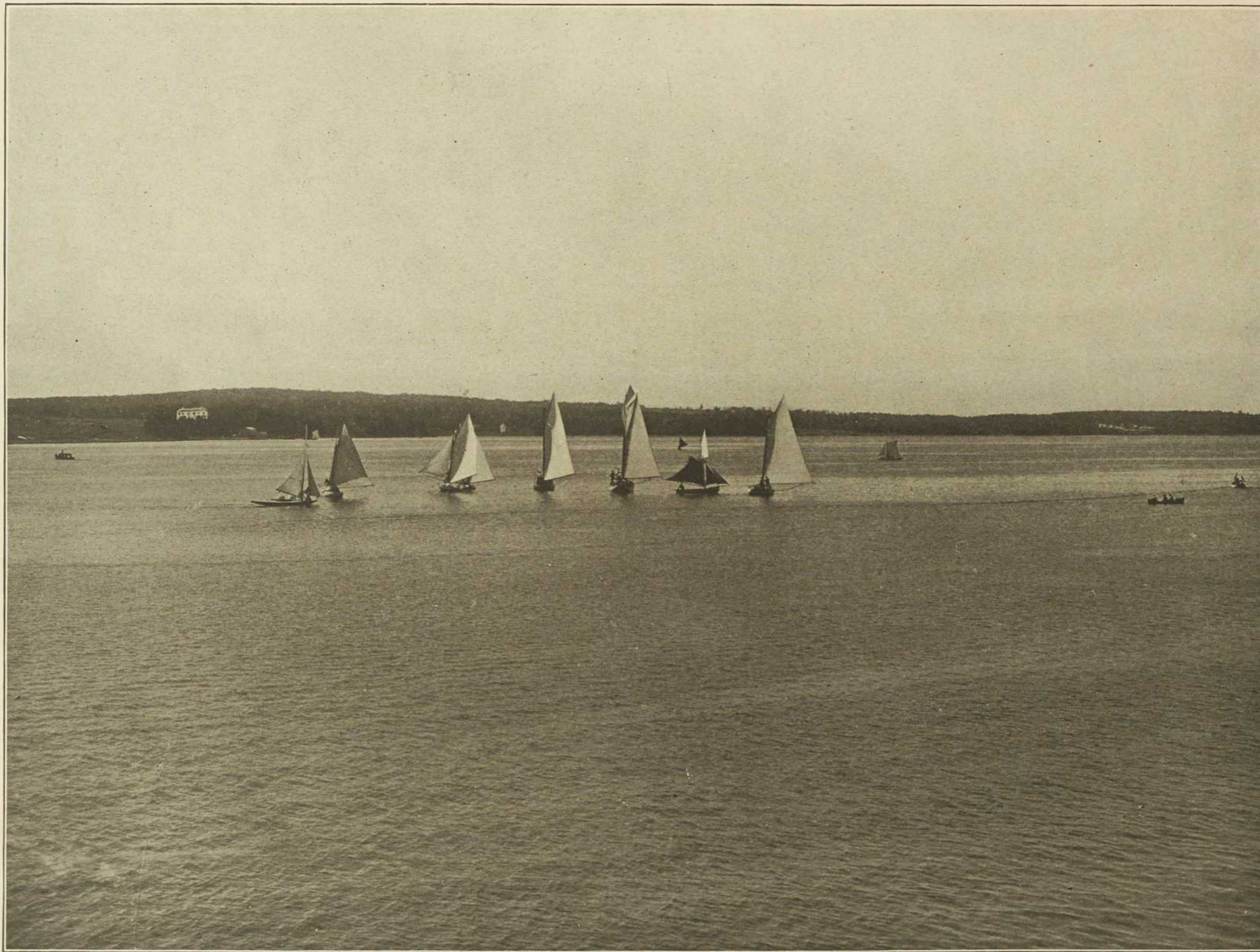
GRAND NARROWS, CAPE BRETON, N.S.



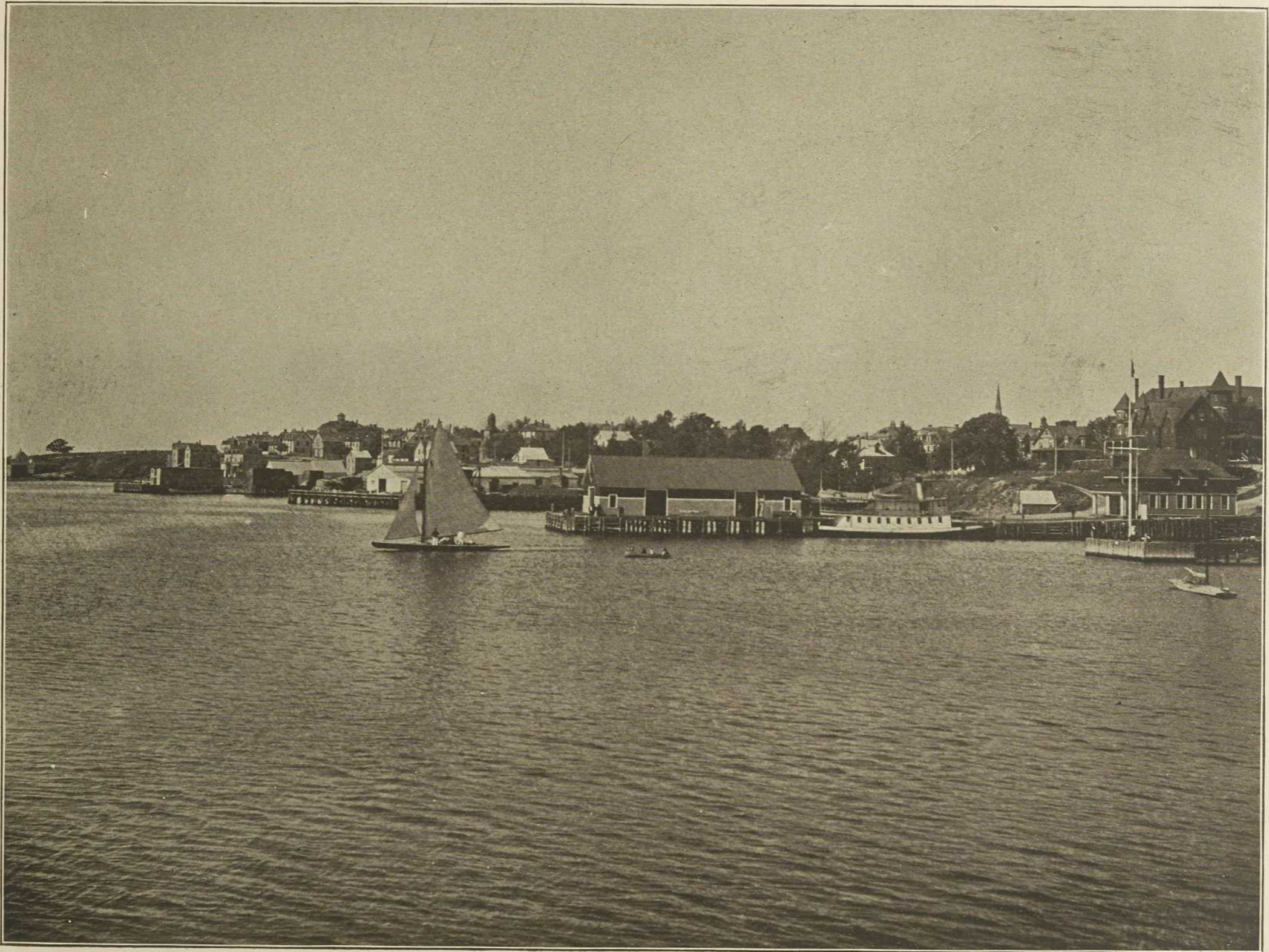
BADDECK, CAPE BRETON, N.S.



BRAS D'OR LAKES, CAPE BRETON, N.S.



YACHT RACE, SYDNEY, CAPE BRETON, N.S.



SYDNEY, CAPE BRETON, N.S.



LOUISBOURG, NEAR SYDNEY, CAPE BRETON, N.S.



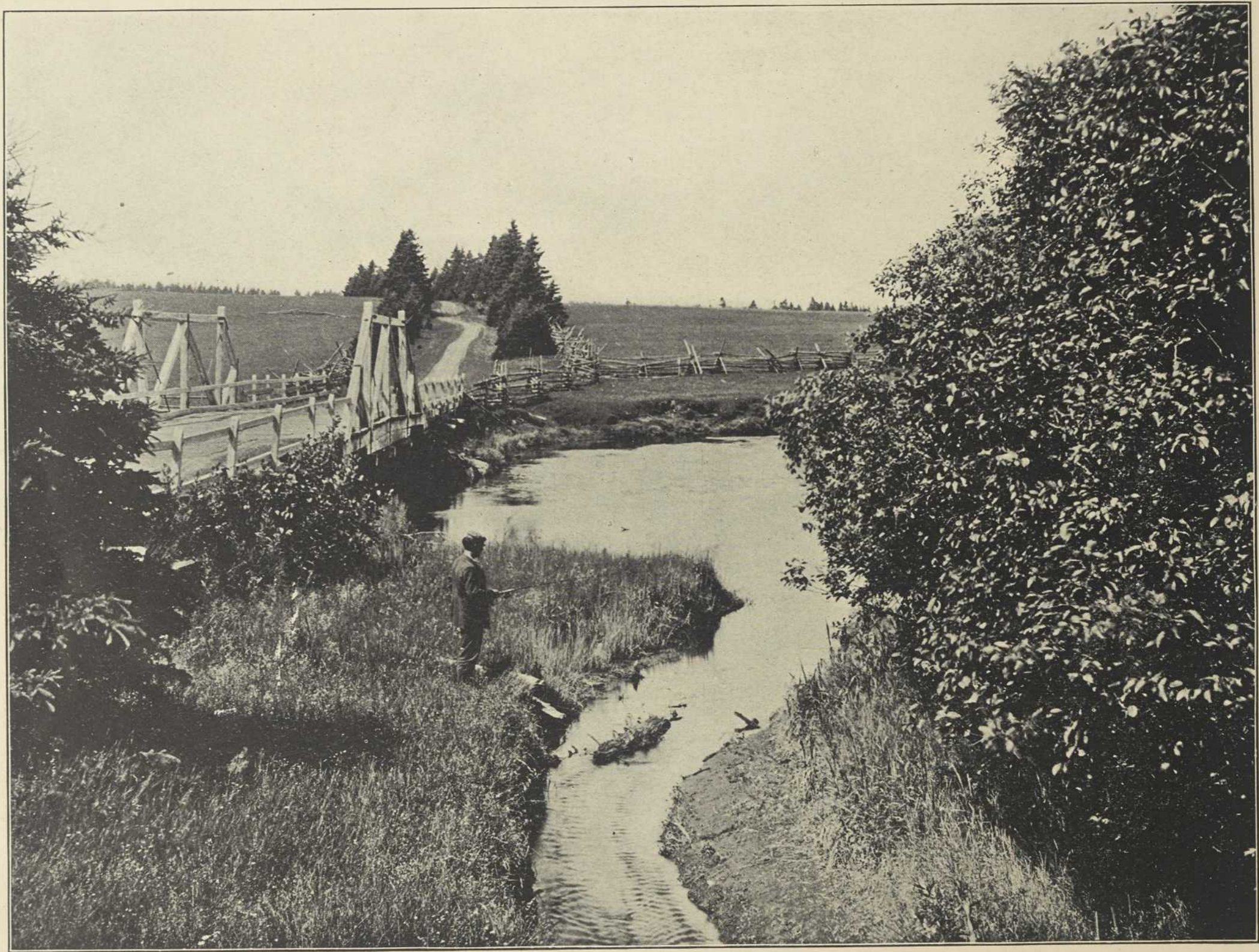
STEAMER "NORTHUMBERLAND" LEAVING SUMMERSIDE, P.E.I.



MORRELL RIVER, P.E.I.



RUSTICO BEACH, P.E.I.



TROUT FISHING, P.E.I.



A QUIET NOOK, P.E.I.



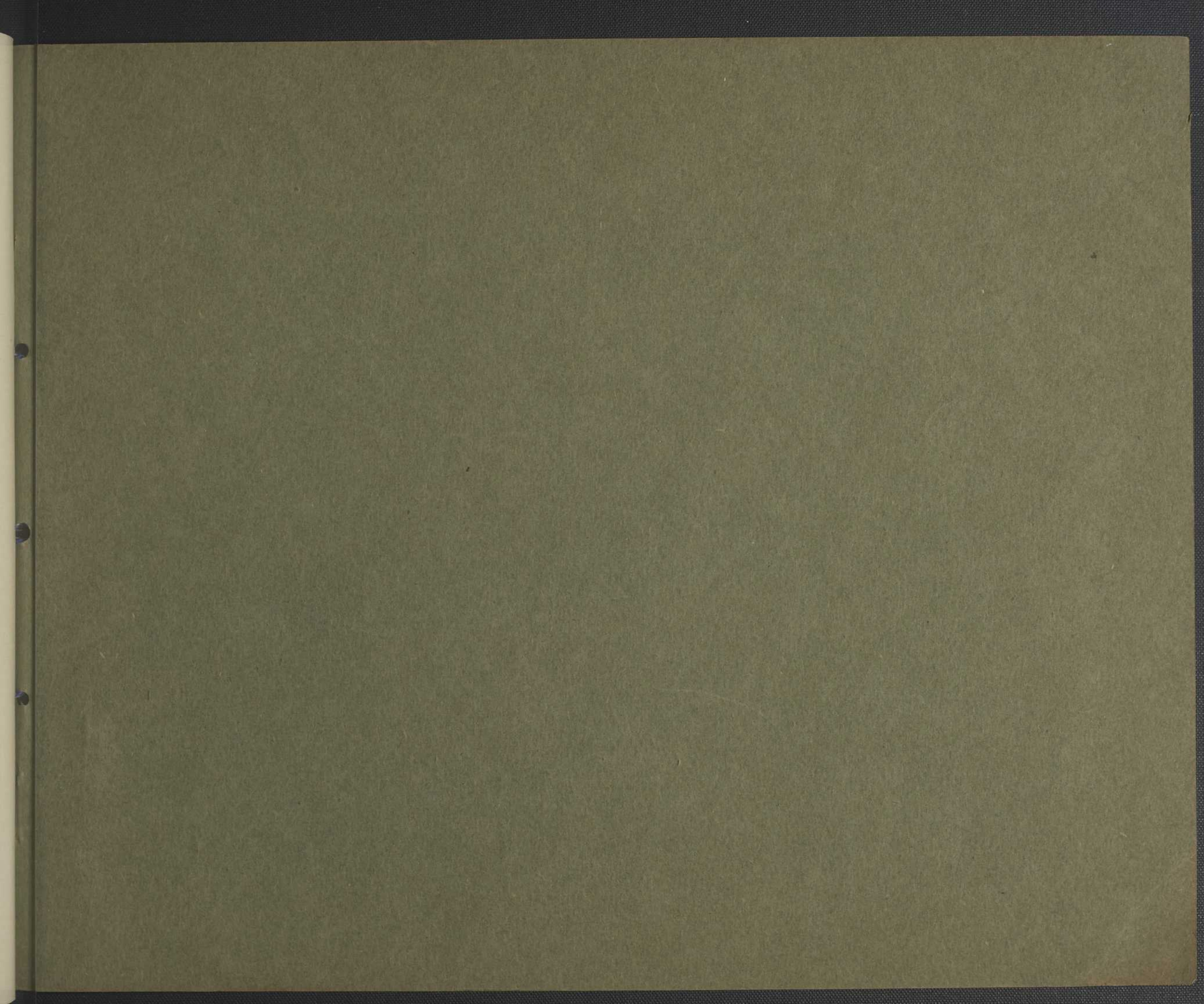
A COUNTRY DRIVE, P.E.I.



PASTORAL SCENE, P.E.I.



POWNALL BAY, P.E.I.



BNQ



C 000 297 206

