

ROMANTIC QUEBEC

Capspé

PENINSULA



PUBLISHED BY THE PROVINCIAL TOURIST BUREAU
ROADS DEPARTMENT, QUEBEC, CANADA

OFFICIAL INFORMATION FREE

Tourists are invited to make use of the information bureaus operated by the Provincial Tourist Bureau. These offices are at the disposal of the public from nine o'clock in the morning till eleven o'clock at night, every day, Sunday included. Not only all manner of information that might be desired on a visit to the Province, but also maps and descriptive booklets, are obtainable free of charge. It is greatly to the advantage of tourists to avail themselves of these gratuitous services which the Department has placed at their disposal.

The Department of Roads is operating its information bureaus at the following places:

MONTREAL — 1013, Dominion Square;

NASHUA, N.H., U.S.A. — 18, Lock Street;

NIAGARA FALLS, Ont. — Hotel General Brock (near Suspension Bridge);

WINDSOR, Ont. — Hotel Norton Palmer;

**WINDSOR, Ont. — Administration Bldg.,
Ambassador Bridge;**

**QUEBEC, — PARLIAMENT BUILDINGS
St. Augustin St.
(from 9 a.m. to 5 p.m., Sunday excluded).**



FOREWORD

IT is hard to describe the charm of the Gaspé Peninsula, but impossible not to feel it. Its charm compounded of so many elements. The beauty of the scenery, the clear sunshine, the life-giving air, the glorious blue of the sky, all these are part of it, but yet they hardly explain the glamour and fascination of this great vacation wonderland.

Gaspé is the land of many thrills, of awe-inspiring beauty, of delightful summer resorts, of long stretches of wild country, of exquisite sand beaches, of old time habits and customs, of legends and stories, of ghosts, goblins and sprites.

It is a country inhabited by a people who still live as their forefathers did four hundred years ago, but where the tourist will find the very best of accommodation of every kind in well-appointed, up-to-date hotels and inns and boarding-houses.

The Great Landscape Architect of the Universe seems to have designed the Gaspé Peninsula for the perpetual pleasure and refreshment of man. Nature, indeed seems to have showered on this region every beauty in her Pandora box.

Imagine the ponderous ranges of rolling mountains and hills, the fearsome cliffs and headlands of miles of constantly sea battered coast line; the whole wild landscape clothed and softened by luxurious forests of balsam and pine, by smiling green valleys, by pale blue and emerald lakes, and by murmuring rivers and streams. Place it all in the silver and azur frame of the giant River St. Lawrence and Canada's Mediterranean sea, the Baie des Chaleurs, and you have a mental picture of a perfect holiday land, and you realize that there still is a country where your dreams may come true.

PRINTED IN CANADA





The GASPÉ PENINSULA

The Gaspé Peninsula is that part of the Province of Quebec situated between the St. Lawrence and the Baie des Chaleurs, covering an area of 7,300,000 acres, or 11,400 square miles, and extending into the Gulf of St. Lawrence over a distance of approximately 170 miles.

Because of its physical form, it has been aptly described as "a huge finger from the mainland reaching out into the Gulf."

HEALTHFUL CLIMATE

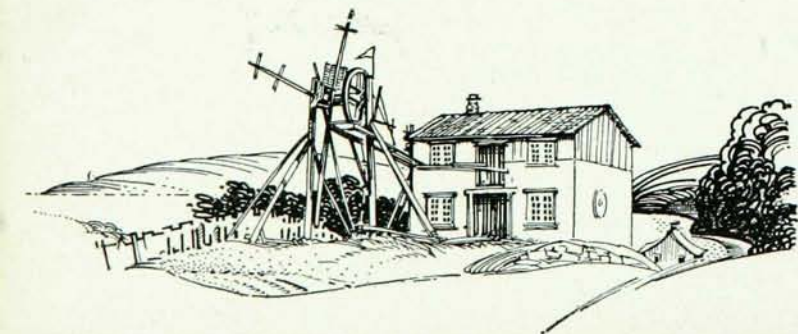
A cursory glance at Gaspesia, as indicated on a map, might tempt one to imagine that it has a much colder climate than other parts of the Province of Quebec. This would be an error indeed since the mean daily temperature in the Gaspé Peninsula is better than that of the city of Montreal. There is never any excessive heat and the nights are delightfully cool, although never cold, during the summer months; and in the Fall, — September and October, — when nature is really at its best, with the gorgeous autumnal colorings and the glorious sunsets, there still remains in the air sufficient warmth to make for most pleasant and restful motor travel.

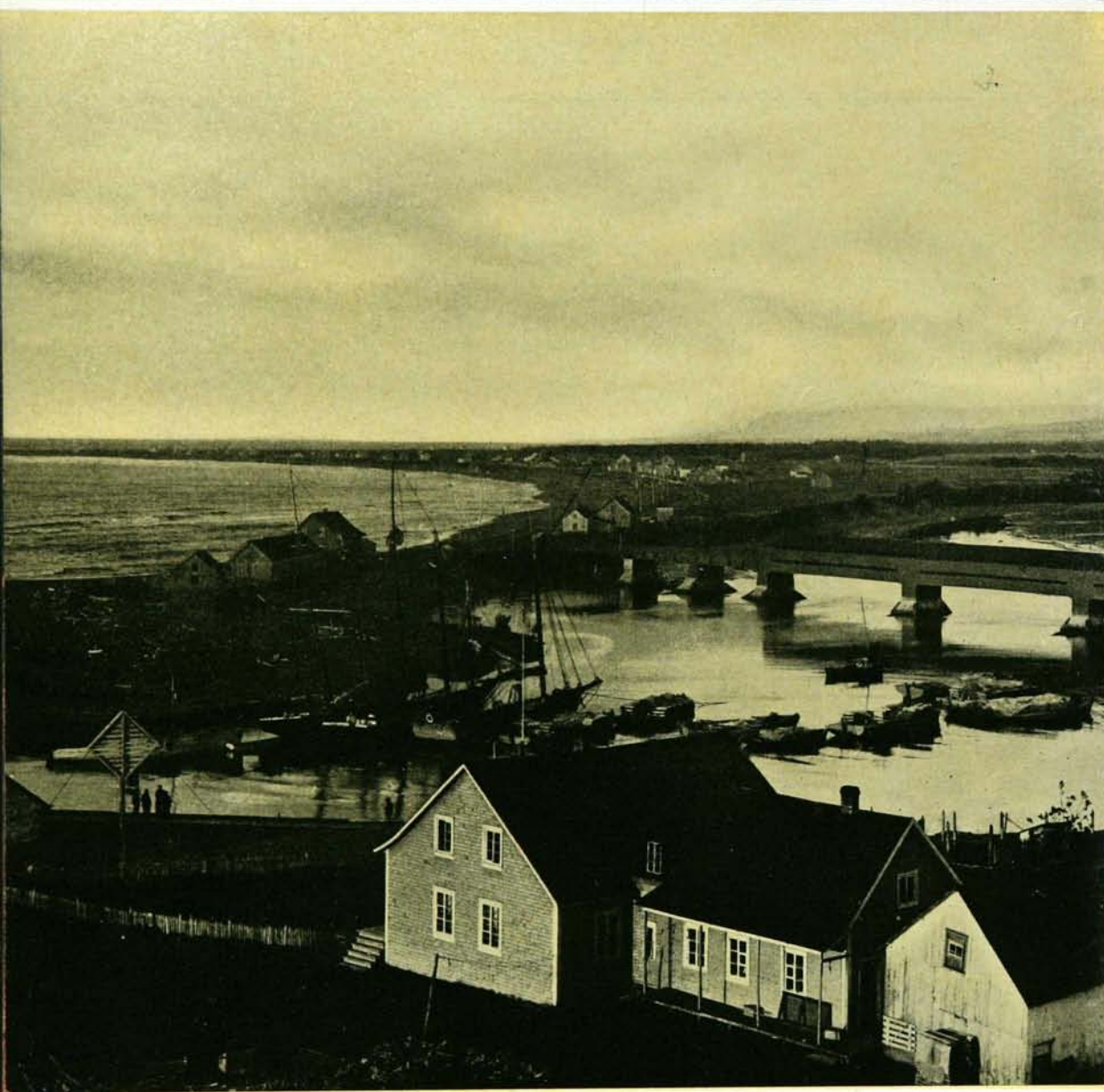
Hay fever, the bane of so many summer resorts, is unknown along the Gaspé coast lines, and the constant gentle breezes that are wafted from the waters on both shores keep black flies and mosquitoes in their natural lairs in the forests of the hinterland. And even there, during the hottest days in summer, those winged pests are very seldom met with.

Page Three



On the Perron Highway





Cap Chat and its long covered bridge



NATURAL RESOURCES

While fishing and farming constitute the two main occupations of the people who live on the Gaspé Peninsula, the lumber trade provides quite an amount of employment and is a source of considerable revenue. There are also a few industries, particularly in the more largely settled districts.

Gaspeia is exceedingly rich in natural resources of many kinds, but it is still practically undeveloped; and with the exception of its fisheries and some farming, its immense riches and wealth remain dormant and unexploited.

There is every prospect of great wealth in the mining resources of the Peninsula. Copper, zinc, iron and antimony ores have been discovered at the head waters of several rivers and in the interior.

From a geological point of view, the conditions in Gaspé are encouraging to the prospector in search of ore deposits. Until recent years, however, practically no prospecting has been done in the interior of Gaspé.

There are indications of asbestos in certain localities. Oil has also been found.

WATER POWER

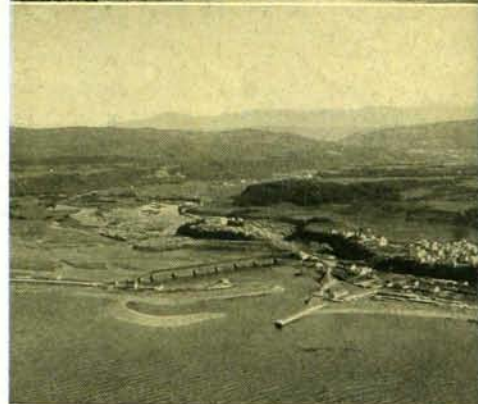
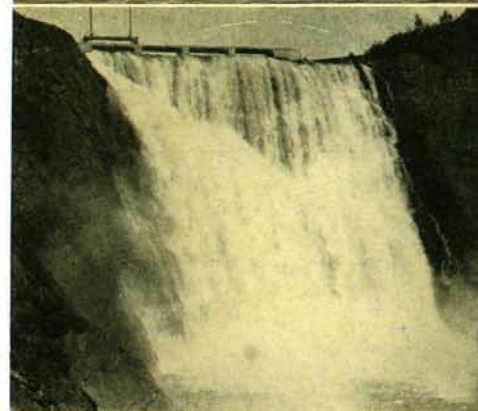
The Gaspé Peninsula has two great slopes, the largest descending to the Baie des Chaleurs and the other sloping towards the St. Lawrence River.

Most of the rivers in those two watersheds offer great water power possibilities, but only a few of them have so far been put to any practical use.

Some of the water powers are of considerable local importance, but compared with the large powers found in other parts of the province they are relatively small.

There are a number of small power plants. Hydro-electric development supplies most of the localities with light. Greater development is expected in the near future. There is power enough for all local requirements.

Page Five



Metis Beach from the air
Great Metis Falls
Cap Chat from the air



THE GASPÉ FISHERIES

Gaspé has been called, and most appropriately so, the "land of the cod", for the cod fishing is the principal industry and the seasonable occupation of the vast majority of the people along the two long shore lines.

The cod ever had been the chief commercial asset of the country of Gaspé, and the largest factor in its settlement and development.

Those who would wish to learn more about the fisheries should secure the more complete guide-book of the Gaspé Peninsula, mentioned in the list of the publications issued by the Department of Roads.

An idea of the value of the fisheries of Gaspé, — and it might be stated that in addition to cod, large quantities of salmon, herring, mackerel, and lobsters are also taken along the coast, — may be gained when it is stated that the fish caught is estimated to be worth about \$1,000,000 a year with a saleable value, when prepared for market, including the by-products of the fisheries, of over \$1,500,000.

The tourist who would like to engage in the novel experiment of cod fishing, can easily do so. In practically every locality along his route he can secure the services of a fisherman who, for a small consideration, will take him out in his boat to the fishing grounds.

Where fish is so abundant there is naturally every advantage for the "sportsman" as well as for the fisher who earns his living by garnering a harvest from the sea.

Gaspé has some of the finest salmon rivers and "pools" on the American continent. There is trout in every river and stream. The angler has his choice of game fish. There is splendid sport in or near every locality.

Page Seven



A Street in the Village of Gaspé





Impressive Mont St. Pierre



HISTORICAL GASPE

Nearly four hundred years ago, or to be exact, in 1534, two small sailing ships of less than a hundred tons, manned by a combined crew of sixty-one hardy sailors from the port of St. Malo, France, and commanded by Jacques Cartier, driven by a fierce storm, took refuge in an unknown but very welcome bay. When the strength of the wind had subsided they lowered their boats and went ashore.

Cartier and his men felled several large trees and erected a thirty foot cross upon which they attached a shield bearing the glorious fleur de lys of France and the inscription "Vive le Roy." And the St. Malo navigator, discoverer of Canada, in a simple but momentous ceremony, took possession of the newly discovered land for "Christ and the King."

The bay where the gallant Frenchmen had landed was the Bay of Gaspé, at the extremity of the Peninsula, where now stands the village of Gaspé.

According to certain historians, the Gaspé Peninsula had been visited earlier, about the twelfth century, by Greenlanders and Icelanders, who came to its shores to fish, but who never actually settled on the land.

While there are no official records or reliable historic data to indicate that those northerners ever sighted the wild rock-bound coast of the Peninsula prior to the time of its actual discovery by Jacques Cartier, it is stated that when the St. Malo navigator arrived and met the natives it was found that they possessed certain knowledge which they could scarcely have acquired had they not met some kind of white men on some previous occasion in the distant past.

Cartier officially discovered Canada and took possession of the country. Neither Greenland nor Iceland claimed prior occupation of the land.

Page Nine



The Bay at Grande Vallée
Village of Mont Louis
Near Ruisseau Castor



AN UNSPOILED POPULATION

The people who live on the Gaspé Peninsula are the descendants of the early traders and fishers who came over from France shortly after the country had been discovered, of Channel islanders who settled on the coast in the early days of the new colony, of "Loyalists" who came from the United States, of Acadians who were exiled from their country, of French-Canadians from the other parts of the Province, and of English, Irish and Scotch emigrants. French is spoken exclusively along the north shore and both French and English along the Baie des Chaleurs.

Since the country was practically isolated, owing to lack of the proper means of communication until quite recently, the people have remained "unspoiled" by the encroachments of modern civilization. They have, to a very remarkable extent, preserved the old habits and customs of their forefathers of several centuries ago. They are exceedingly hospitable, kindhearted and generous. Happy and contented in their faith, free of mind and rustic in their desires and wishes, they tend to their daily tasks, love their land, venerate their pastors, and live the lives their ancestors, the hardy fishers of St. Malo and Dieppe and the Channel Islands, and the exiled farmers from Acadia, lived in centuries gone by.

Hospitality is an inherited virtue with the Gaspé people and the traveller is always welcome and is soon made to feel "at home."

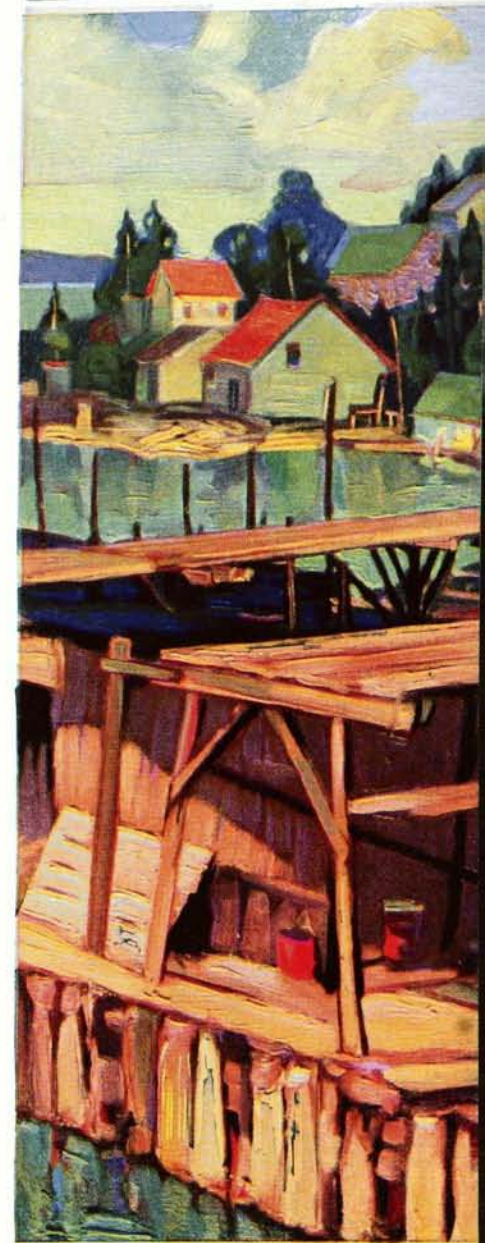
While fishing is the main occupation of the majority of the people, there is considerable farming, some of it on a large enough scale to allow considerable exportation to other parts of the province of farm and dairy products.

Commercial fishing has naturally given rise to many industries, such as canning and otherwise preserving sea food for outside markets.

Practically all the lumber for local requirements is cut in the numerous saw mills on the Peninsula, and certain kinds of wood are prepared for export trade.

There are a number of small industrial plants.

Shops and stores of every description are located in every town or village.



The Quay at Gaspé





LAND OF LEGENDS

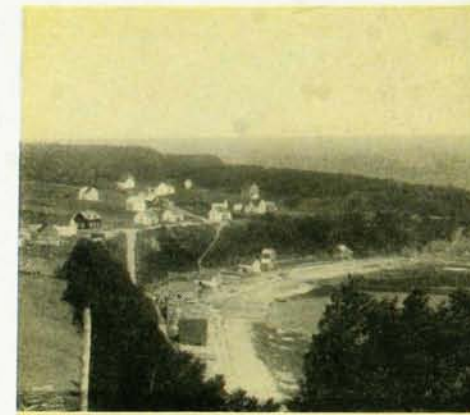
In a country like Gaspé, where the people have, for so many years been practically isolated, and where they have lived among themselves with little if any contact with the outside world in many cases, it is quite natural that there should be an exceedingly rich collection of folklore, stories and legends.

Fisher folks are prone to attribute all happenings which they cannot explain, with the little knowledge they possess of the forces of nature and of the physical laws, to supernatural powers and in some cases diabolical interventions.

During the long winter evenings, when the stormy winds howl along the shores of the St. Lawrence and the Baie des Chaleurs, when the tempest lashed waves shriek as they batter the dark cliffs, or moan as they are crushed and smothered upon the wide sandy beaches; when the timbers of their wooden homes creak as the snow laden gales wail and lament; and an occasional lost cormorant screams its plaintive cry as it soars above the frost tipped billows of a deserted sea; the fisherman delights in narrating the weird stories and legends of days gone by. The tourist who visits the Peninsula in summer can very often get some of the folks to tell them those tales, and if not, they can find a number of them related in the more complete guide-book to Gaspé issued by the Department of Roads, and in other similar works.

There is probably no other part of the Province of Quebec where there are so many weird legends and tales as can be heard in Gaspé. Most of the localities have their stories of fantastic occurrences, and in most of those places the tourist will be shown the scene of some thrilling event in the past history of the town or village.

The very name of some of the localities suggests such unusual happenings: Ile au Massacre, where a band of Indians were massacred; Pointe Frégate where a frigate was wrecked; Anse Pleureuse, where a "ghost" was laid low by a missionary; Manche d'Épée, where an old sword hilt, dating back to the early arrival of the first white man, was found; and many others.



Typical fishing settlement

Fishing fleet at anchor

Picturesque road near l'Anse-à-Valleau

Lake in the mountains





A SPLENDID HIGHWAY

The wonderful land of "mountain and sea", land of scenic beauty, ideal vacation region, with its people so unlike those who live in any other parts of the Continent, can now be visited in perfect comfort by the tourist through the construction, by the Quebec Roads Department, of a beautiful hard gravel road that encircles the entire Peninsula, known officially as Highway No. 6.

The Highway runs from Ste. Flavie, a little over two hundred miles from Quebec, to Gaspé Village, along the St. Lawrence River; from Gaspé to Matapédia, along the Baie des Chaleurs; and through the beautiful valley of the Matapédia, back to Ste. Flavie; or a total distance of 553 miles. The road is maintained in excellent condition and while tremendous difficulties were encountered during the construction of the highway, it has been planned and laid in such a fashion that the automobilist travels over it in perfect comfort and with real pleasure.

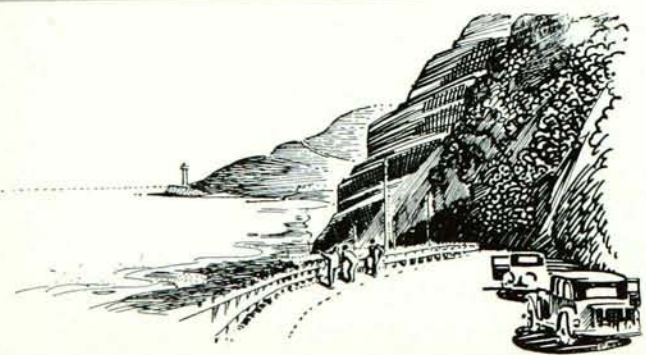
Although the country is so uneven, broken and hilly, and the road has some very unusual ups and downs, twists and turns, travel around the Gaspé Peninsula is perfectly safe, and in fact it offers less danger than do many roads on flat country. The highway has been splendidly constructed, is well kept, and traffic is practically all "one way", travel going east by the south shore and returning west by the north.

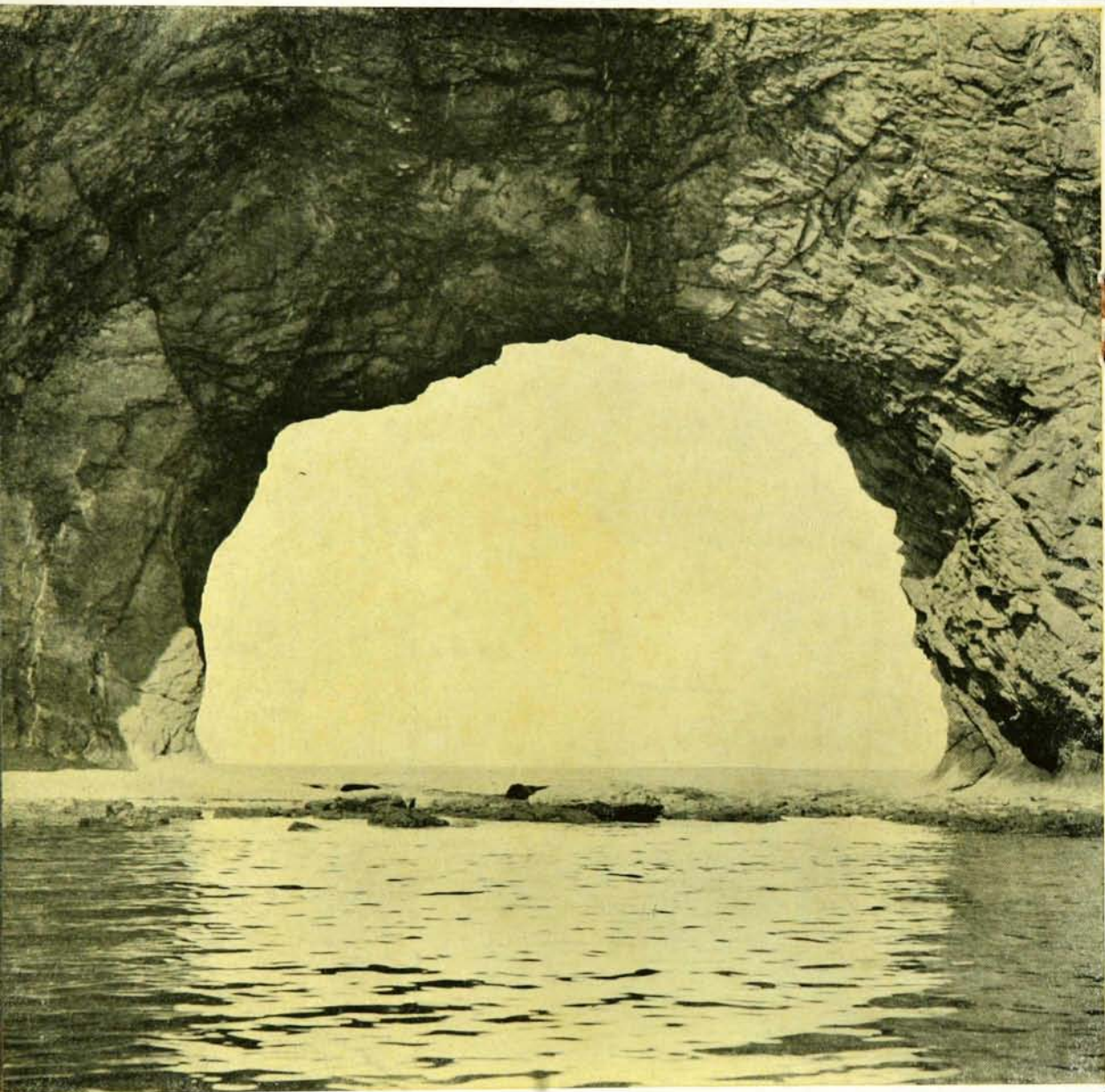
There have been no serious accidents of any kind, due to road location or conditions, on the Gaspé highway since it was built, in fact statistics show there have been less mishaps on the Gaspé tour than on any other road of the same length in the province.

What strikes the tourist most when travelling over this beautifully smooth road, is the clever manner in which it was engineered and constructed. The highway had to be taken, in many cases, through country where difficulties were met at every mile, but it was carefully planned and the work carried out with wonderful success.



Gaspé Provides Sports Facilities





THREE COUNTRIES IN ONE

The Gaspé Peninsula is really a "three-in-one" country. From Ste. Flavie to Gaspé, along the St. Lawrence River, mountains and forests and a shore line mostly strewn with rocks and boulders, but with some very pretty stretches of fine white sand beaches, and the vast expanse of the majestic stream, feature the landscape.

ALONG THE BAIE DES CHALEURS

The second section, from Gaspé to Matapédia, along the shores of the Baie des Chaleurs, presents quite a different aspect. It is the land of cliff and beautiful sand beaches. There is somewhat less of the wild ruggedness of the north shore along the river, and the scenery in general is more mellow and entrancing in its gentility.

THROUGH THE VALLEY

From Matapédia back to Ste. Flavie, the road runs through the glorious valley of the Matapédia, which might well be called the "Elysean Fields" of Canada. The scenery throughout the Valley is most impressive. It is a miniature Switzerland, with beautiful hills, vales and dales of captivating beauty, and scattered throughout the land, most prosperous settlements, all located among most picturesque surroundings.

The country the tourist is now travelling through is quite different from the two other sections of the tour he has just completed. There is no more of the rugged scenery he has witnessed on the north shore nor any of the great cliffs he found along the Baie des Chaleurs.

There is mellowness and sweetness in the rolling hills, the meandering rivers and streams, the calm lakes, the murmuring forests and the beautiful meadows and fields.

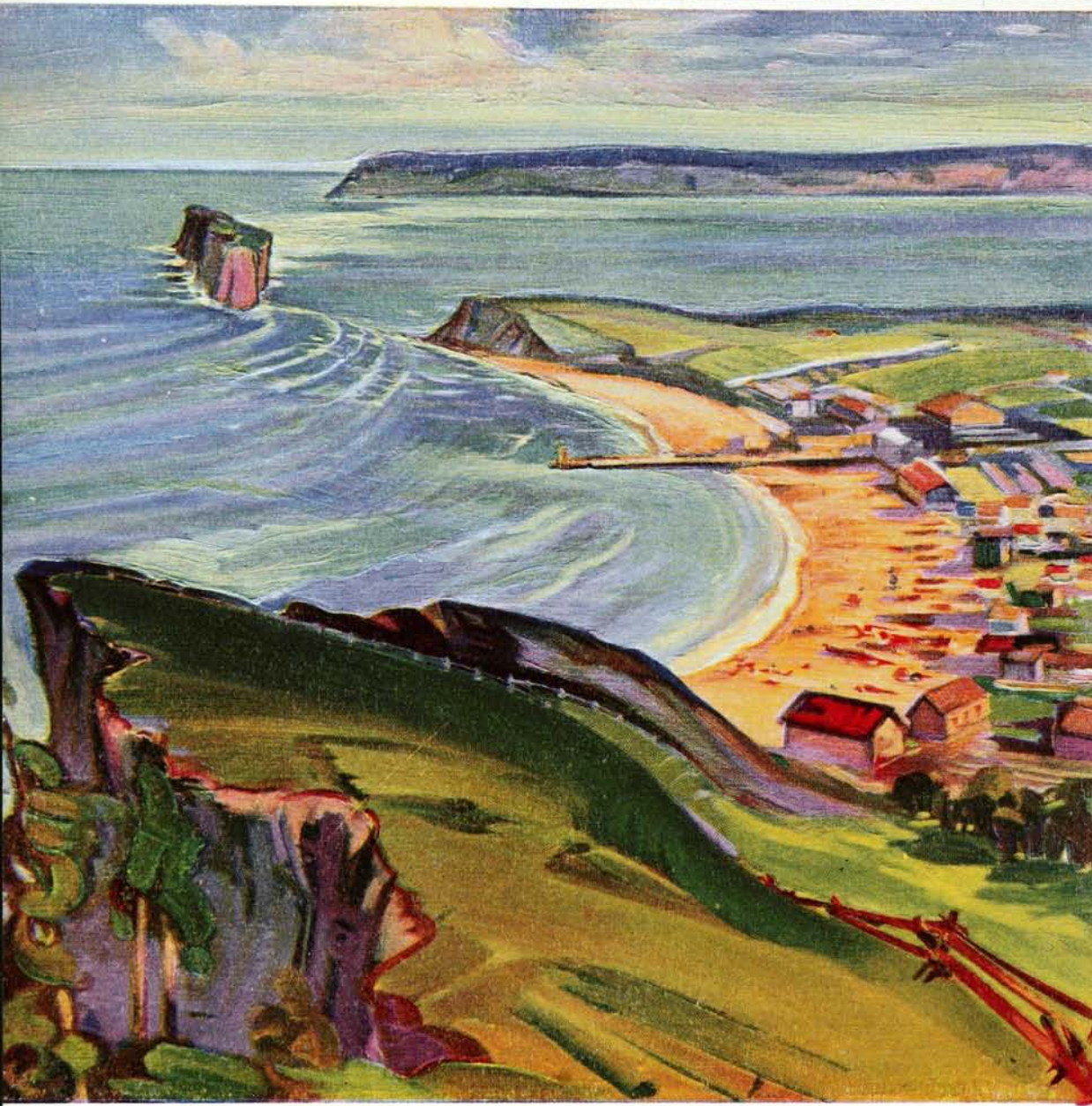
Page Seventeen



Near the "tip" of Gaspé
In the Bay of Gaspé
A lonely stretch of road

The "arch" through Percé Rock





THE SPORTSMAN'S PARADISE

While the Gaspé Peninsula is essentially a land of scenic beauty, it also offers unlimited facilities for all kinds of recreation.

In addition to the many amusements that are found in most vacation lands: swimming, river and surf bathing, boating, canoeing, driving, hiking, tennis and golf. Gaspé has in its coastal waters and rivers and lakes, and in its vast forests and valleys, many ideal fishing and shooting sites.

Big game, including the lordly moose, king of the Canadian woods, deer and bear, and feathered game of every description, give the hunter every opportunity to indulge to his heart's content in his favorite sport.

The virgin forest, the indented sea-board and the marvellous salmon and trout fishing waters of the Gaspé Peninsula have made it in recent years a paradise for the hunter and the fisherman.

The rugged mountains of the interior besides their great wealth in timber, have provided for centuries a great natural range for wild game, while the bays and marshes furnish ideal feeding grounds for feathered game.

The construction of Highway No. 6 placed those game areas within easy reach.

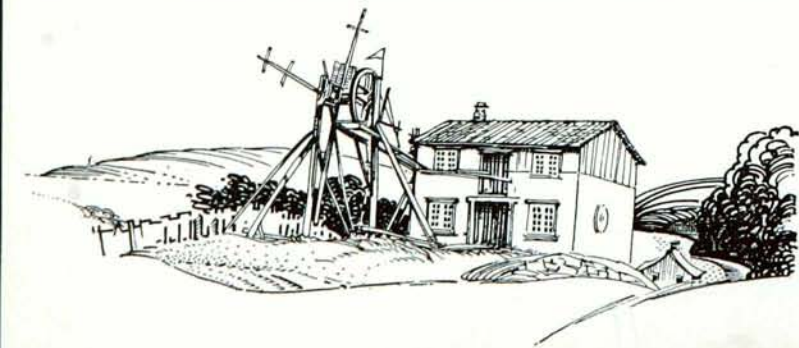
TRANSPORTATION AND ACCOMMODATION

While most of the tourists who visit the Gaspé Peninsula travel by automobile and can enjoy the trip by making it over the splendid highway, there are those who wish to see the country but either have no car or do not wish to make use of the automobile. They have other means of visiting at least parts of the great vacation land.

A railway runs between Matapédia and Gaspé, along the Baie des Chaleurs, operated by the Canadian National Railways, and it



Percé, where the Tourists' Dreams
Come True





Up through the mountains at Percé

permits the traveler to visit most of the localities he would meet if he were going by road.

The Clarke Steamship Company operates a number of fine steamers between Montreal and Quebec and some of the ports along the coast of Gaspesia, and a trip on one of those steamers makes an ideal excursion for those who like to travel by water.

Several autobus companies run cars from point to point along the River St. Lawrence and the Baie des Chaleurs.

All along the route there are good hotels, clean and comfortable, some of them equal to some of the great hostelries in large centers, and the boarding-houses are known for their hospitality and the good wholesome food they provide for the visitor.

Garages, small and large, and filling stations where gas and oil can be secured, are to be found at every locality of any importance.

While there are perhaps not the same number of tourist camps, cabins, bungalows and organized camping grounds on the Gaspé tour as on some of the other highways in the province, the tourist will find such accommodation at many places along the road, and most of the camps, cabins and bungalows are beautifully situated, most of them being situated quite close to the water's edge, near, or right upon little sandy beaches. They are all within a short distance from some village, or settlement where provisions can easily be secured.

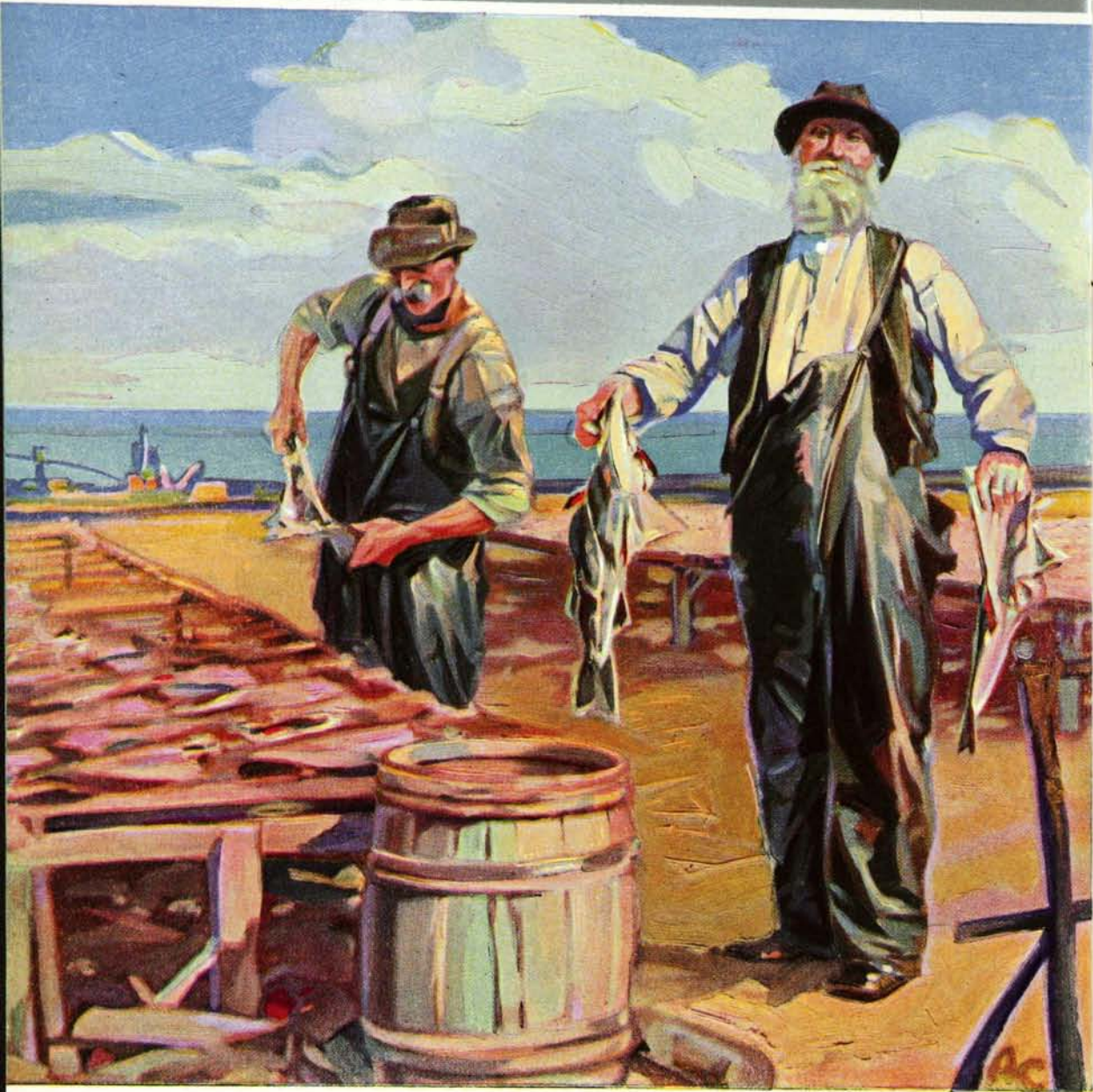
There is no scarcity of camping sites. Vacant spaces, suitable for the purpose, are found everywhere.

"Tea-houses", sandwich shops, refreshments stands, cater to the "quick-lunch" customers.

The tourist who might require "odds and ends" of wearing apparel, while he is making the Gaspé tour, will find, in some of the larger towns, good stores and shops, well stocked with a large variety of goods. Souvenirs, sundries of every description can also be secured. Photographic material, reading matter, — including the leading U.S.A. magazines, candies and sweets, smokes, etc. can all be purchased in most localities along the route.



Bonaventure Island Rocks
The "shallows" at Barachois
Sign of faith on the coast



A DELIGHTFUL TRIP

As the tourist starts from Ste. Flavie, he at once enters into a land of picturesque, although at times awe-inspiring, scenery.

Nature unwinds its screen of scenic wonderland every foot of it, as the visitor proceeds upon his way, disclosing a gem of water or mountain beauty more thrilling than the one rolled into the background of the traveler's memory.

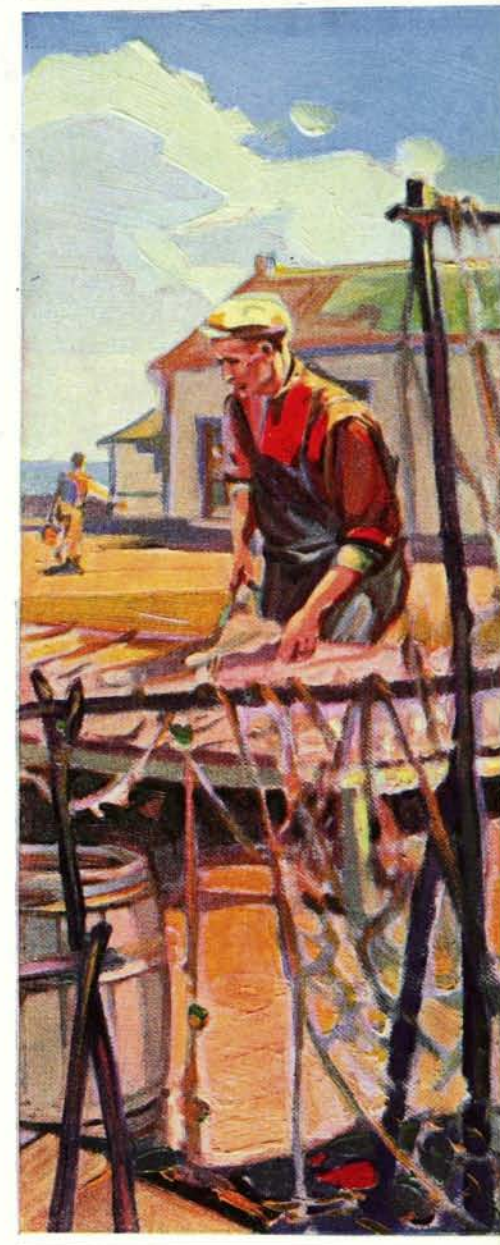
The tourist passes through no less than 78 towns, villages and settlements, and he is thus bound to meet with a tremendous variety of landscapes.

Assuming that the tourist leaves via Québec, Rivière-du-Loup and Rimouski, the principal localities along the Gaspé highway proper, in the order that they are met with, are:

Metis Beach, 14.67 miles from Ste. Flavie which is one of Quebec's most fashionable summer resorts, with a large number of excellent hotels, all the amusements and sports of an up-to-date watering place: fine beach, boating, fishing, tennis and golf, and beautiful surroundings.

Matane, 39.66 miles from the starting point, a rather important industrial center, where hotel accommodation is also of the very best and which is also frequented by a large number of regular vacationists from the large cities in the province. There is a pretty beach and many other attractions.

Ste. Anne des Monts, 96.45 miles, is known for its beautiful scenery, situated as it is at the foot of great mountain ranges. There is plenty of bathing and other amusements on the sandy shore, and good hotel accommodation.



A Typical Cod-Drying Establishment





Gaspé, 246.67 miles from Ste. Flavie, is most picturesquely situated and the scenery around it is most entrancing and delightful. The village has very good hotel accommodation and garage facilities and in the immediate neighborhood are to be found all the pleasures and amusements of a regular summer resort: bating, boating, fishing, hunting, hiking, riding, motoring, and tennis and golf.

The population of Gaspé is mostly English speaking as it is made up, in large majority, of descendants of "Loyalists" who settled there at the time of the revolt of the New England colonies.

Gaspé is the seat of a bishopric.

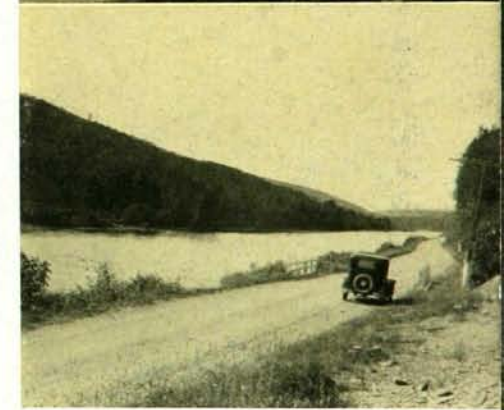
It has a splendid natural harbor.

Gaspé village is about half way around the Peninsula. There are good hotels and first class garage service.

The Village of Gaspé is historically most interesting since it is the site where Jacques Cartier, discoverer of Canada, took possession of the land for "Christ and the King." There are many historical souvenirs in the vicinity of Gaspé, which is situated on a magnificent bay.

If the visitor has a day to spend in the village of Gaspé he should make a trip to "Peninsula Point" to the site of the old house where general Wolfe, who captured the city of Quebec, and incidently brought Canada under British domination, stopped for a month. He will see the ruins of the old house, and if he can be tempted to do so he may, by digging in the ground, be rewarded by the finding of some old coin, or other little souvenir of those olden days.

In addition to the ruins of the old house there are many traces of the wreck of ships along the shore on the same side of the Bay, that are visible at low tide.



The beach at Carleton
Rounded bay at Port Daniel
Through the Matapedia Valley

Chandler and its great mills





THE GREAT ATTRACTION

Percé, 298.27 miles from Ste. Flavie, is the "pièce de résistance" of the Peninsula.

As the tourist approaches the village of Percé, which has been referred to as the "place where the tourist's dreams come true," he enjoys one of the most wonderful sights on the entire continent.

As his car swings towards the great "anse", with the village in its lap, if the weather is fine, he is greeted with an entrancing picture.

The sky gleams with a cold yet lustrous blue while across it slowly flit a few wandering clouds of palest amber, deepening as they sail along, to a tawny orange. A broad stream of light shoots lengthwise across the bay, turning its waters to a mass of quivering and shifting color that alternates from bronze to copper, from copper to silver and azur.

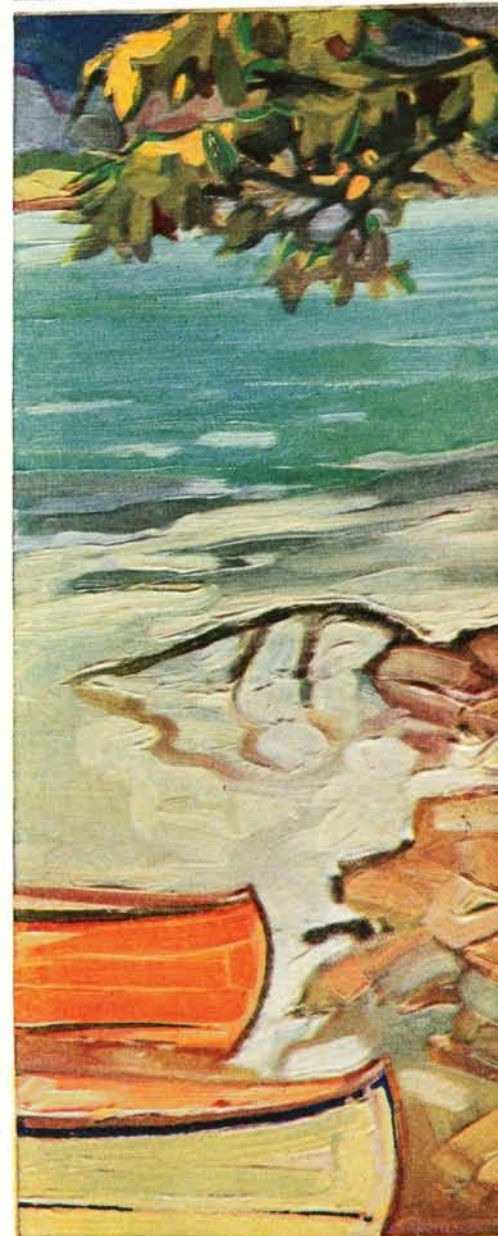
Away in the distance stands a huge mass of rock, its rugged lines transformed into ethereal loveliness by the misty veil of tender rose pink.

It is the world famed "Roche Percée" (the Pierced Rock), a most wonderful sight and one the tourist wishes to behold again and again from every possible angle.

Here nature has been most extravagant in the endowment of her charms. The mountains arising abruptly from the rear of the village and seeming to achieve the blue infinity of heaven; the marvelous view of the sea stretching out to meet the horizon fascinating in its immensity. The majestic limestone cliffs; the great towering "Rock"; picturesque Bonaventure Island in the foreground of the scene, and the wild reach of the hill-sides radiant in the sun-shine and dotted with trim, cosy, farmhouses, all combine to form a never to be forgotten landscape.

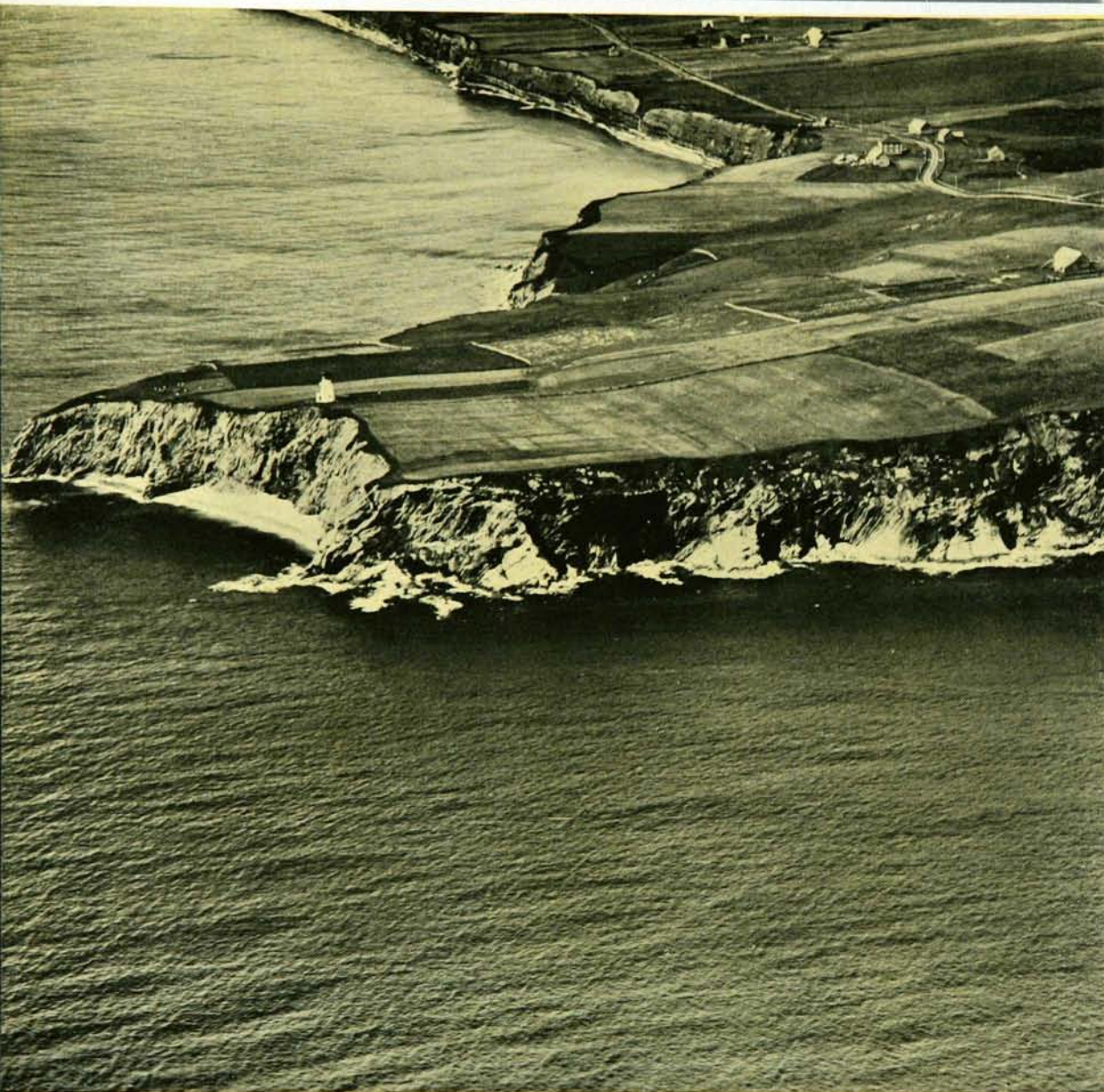
Percé is a delightful place to stop at, and it has, in addition to its many natural attractions and its bathing, boating, fishing, tennis and other summer amusements, the very best of hotel accommodation.

Page Twenty-seven



Gaspé Lakes and Rivers —
The Fisherman's Paradise





Great cliffs as seen from the air

Chandler, 315.89 miles from Ste. Flavie, is a rather important industrial center, with a large pulp mill and several other industries.

Newport, 326.12 miles away, is known as a summer resort, while New Carlisle, 361.48 miles distant, is a country town and an important railway center. It has a pretty beach and good accommodation for visitors.

Bonaventure, 372.33 miles from Ste. Flavie, is a much frequented summer resort, with a beautiful beach and first class hotels.

Carleton, 412.72 miles from the starting point, is ideally located along a very fine stretch of white sand, and it attracts every year a large number of regular vacationists and transients from all parts of the country and from the United States.

Matapédia, 458.37 miles from Ste. Flavie, at the entrance to the Matapédia Valley, is a railway junction and divisional point. It is situated amidst some pretty scenery and has excellent hotel accommodation and garage facilities.

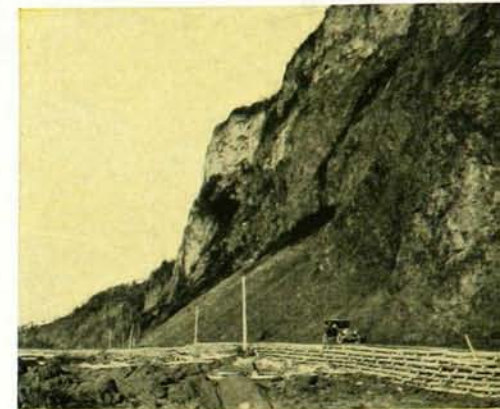
The highway now runs, a distance of over 95 miles, through the beautiful valley of the Matapédia.

Mellow pictures of nature's most serene presentations, soft and mild in their tender coloring, and gentle in outline and contour replace the majestic, but at times fearsome manifestations of the powers of the elements, and the wonders brought forth by the convulsions of nature when the world was in the making.

The traveller has entered the land of peace and tranquility. The Matapédia Valley is a glorified "Killarney."

It is a sportsman's paradise.

The Matapédia is the king of salmon rivers. A wilderness fifty years ago, the valley is today a most prosperous region.



Near Gros Morne
Val-Brillant, Queen of the Valley
The road east of Metis





After leaving Matapedia the tourist passes through Routhierville, Ste. Florence, Causapscal, Lac-au-Saumon,—a little off the main highway, but reached over a very fine piece of road,—Amqui, Val-Brillant; some times referred to as the Queen of the Matapedia Valley, Sayabec, Saint-Moise, Saint-Angèle-de-Merici, St Joseph-de-Lepage, and finally reaches Mont Joli, whence he proceeds to Ste Flavie, to resume his journey back "home". In all those localities he will find very good accommodation at most reasonable rates, and he will find the people exceedingly hospitable.

The journey from Ste Flavie is once more made over highway No. 10 as far as Rivière-du-Loup and No. 2 back to Quebec, but it is suggested that the tourist cross by the steam ferry from Rivière-du-Loup to St. Siméon and then follow the north shore of the St. Lawrence, over highway No. 15 to Quebec. This will give him the opportunity of seeing some new and exceedingly interesting country. He will pass through some of the oldest settled districts in the Province, be given the opportunity of visiting the famous shrine at Ste Anne de Beaupré, admiring the great Montmorency Falls, and going through some very picturesque rural scenery.

For those who have time at their disposal they can follow Highway No. 15 from St Siméon north to Chicoutimi and the Lake Saint John region and then return through the great Laurentide National Park.

There is still another possible variation in the return trip, and this consists in taking one of the Canada Steamship boats from St Siméon, Tadoussac, or Murray Bay, going up the Saguenay River and back to Quebec, or taking the ship on its way back to the same city or as far as Montreal.



Moonlight on Lac de L'Anse Pleureuse



MEANS OF TRANSPORTATION

RAILWAYS

The Canadian National Railways run through the Valley of the Matapédia and connect at Matapédia with the old "Quebec and Oriental" and at New Carlisle with the former "Atlantic Quebec and Western" railways now operated by the Canadian National. It is thus possible to visit by rail, every locality in the Matapédia Valley and along the south shore of the Gaspé Peninsula, on the Baie des Chaleurs.

STEAMSHIP LINE

The Clarke Steamship Company Limited operates a first class service of steamers that call at a number of ports along the Gaspé coast, including Ste. Anne-des-Monts, Cap Chat, Mont Louis, Madeleine, Grande Vallée and Gaspé. It is thus possible to make a delightful excursion by water along the north shore of the Peninsula.

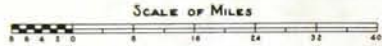
AUTOBUS LINES

While there is no continuous bus line around the Gaspé Peninsula, there are a number of autobus services operated by various companies, which allow tourists to make the entire trip by autobus. In addition there are several autobus trips, taking the visitors around the Peninsula by direct and continuous service, organized by the Provincial Transport Company.

FERRIES AND BRIDGES

There are no ferries, and only one toll bridge on the Gaspé tour. The bridge is the new structure at Gaspé which replaces the old ferry.

THE GASPE PENINSULA



PROVINCIAL TOURIST BUREAU
ROADS DEPARTMENT
QUEBEC



BNQ



C 000 242 534

