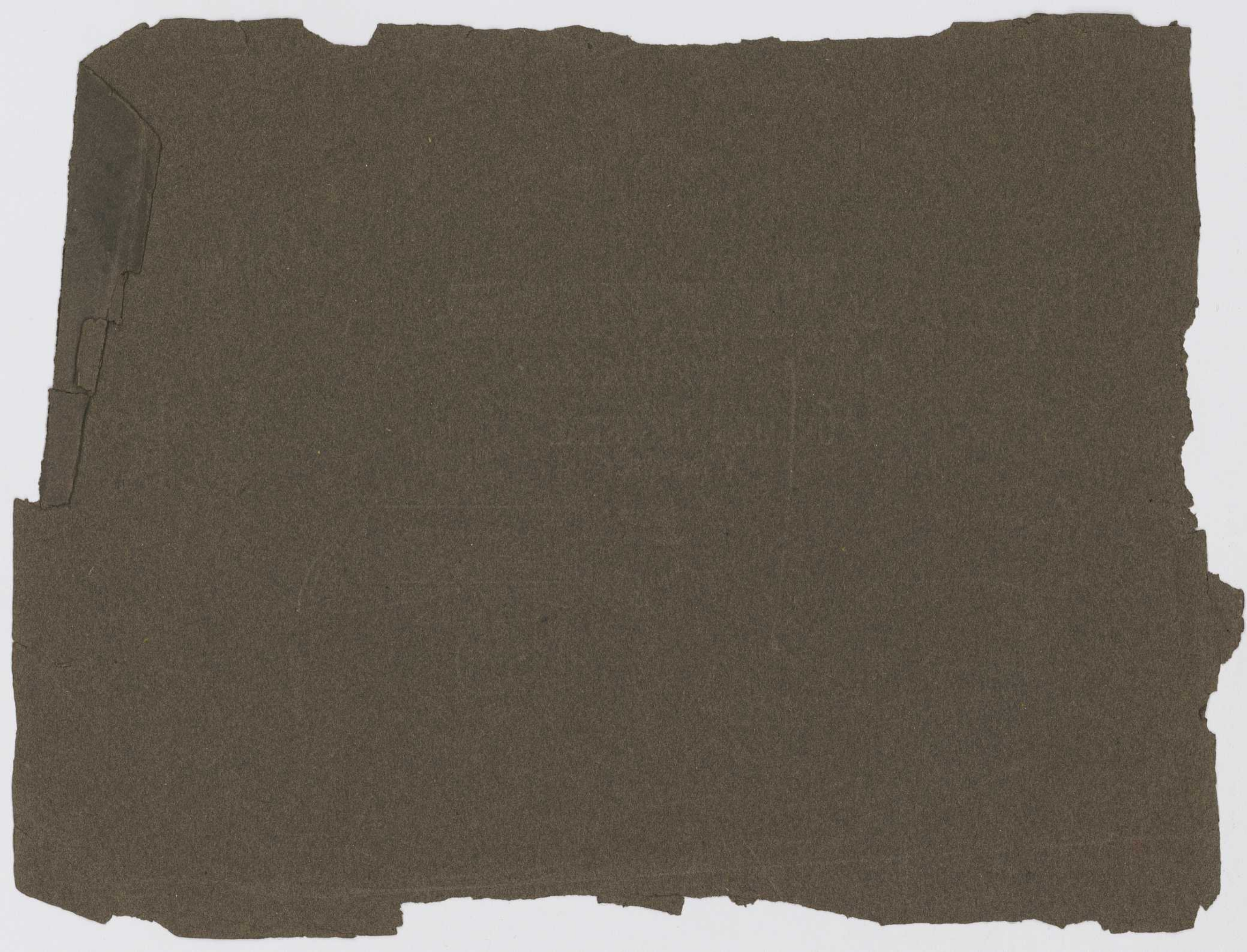


TERCENTENARY  
Canada's 300<sup>th</sup> Birthday  
GREATER MONTREAL  
Souvenir

1998





Dr. de "Pater", 10 ju<sup>n</sup> 1928



GREATER MONTREAL FROM MOUNT ROYAL

# GREATER MONTREAL

## Canada's 300th Birthday

Illustrative of the

### Commercial Metropolis

of the Canadian Empire

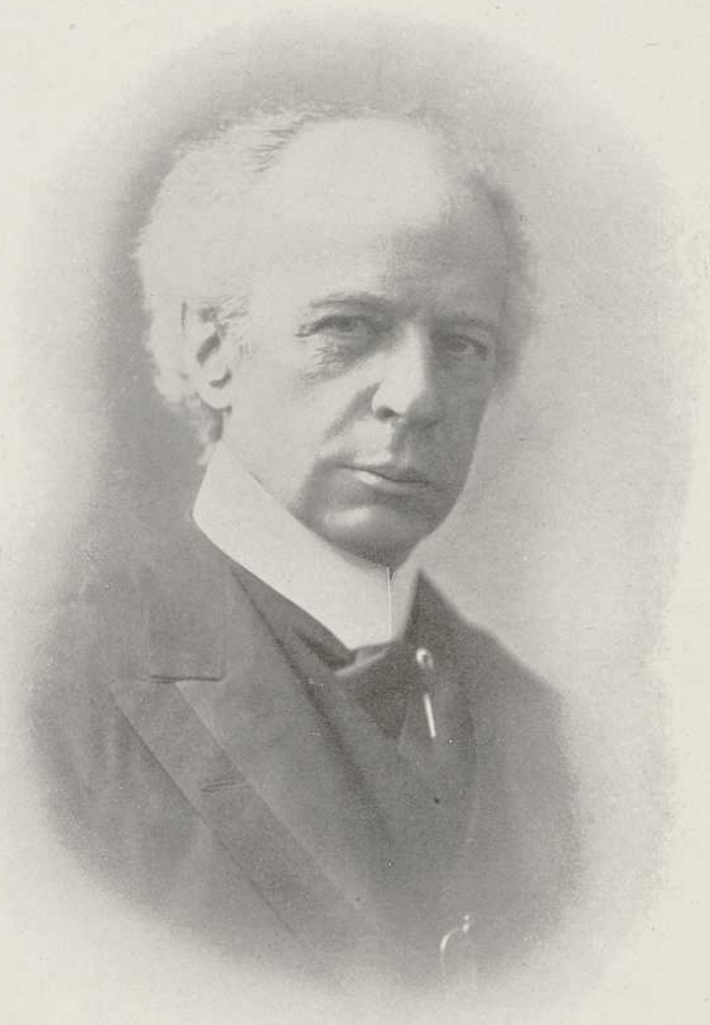


Edited and Published under the Auspices of

THE CANADIAN PRESS SYNDICATE

ESTABLISHED 1900

MONTREAL, 1908

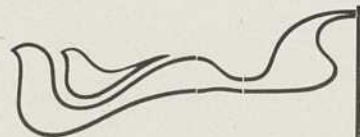


The Right Honorable Sir Wilfrid Laurier, G.C.M.G.  
Premier of Canada



Honorable R. L. Borden  
Conservative Leader

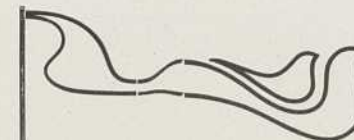
124744



# MONTREAL

Province of Quebec

Canada



THE historical data of Montreal is abundant so we make no attempt to invade that field at any length in this work but have simply tried to depict the city commercially through illustration, believing such method will prove more effective in drawing favorable attention to its advantages than could any effort on our part along other lines. From the very outset we were strengthened in this belief by the cordial co-operation of the Press of the city whose magnificent buildings appear.

Montreal is the commercial metropolis of the Dominion of Canada. As such its interests are national so we deemed it fitting to include engravings of the Right Honorable Sir Wilfrid Laurier, G.C.M.G., P.C., etc., Prime Minister of Canada, honored Leader of the Liberal party, and Hon. R. L. Borden who is the gifted, respected, leader of the Conservative party now in opposition.

The Province of Quebec is governed by a Lieutenant Governor, a Legislative Council and a Legislative Assembly. The first two branches named are appointed; the members of the Assembly are elected by the people.

The Hon. Lomer Gouin, Prime Minister of the Province, is a citizen of Montreal. Recognized by French and English alike as a man of great ability, with sterling principles of honesty and integrity,

he brings with this position a great honor to the commercial metropolis. While the sittings of the Legislative Assembly are held in the Parliament Buildings, in Quebec City, the Capital of the Province, Montreal having such a preponderance in population and consequently such important issues, a handsome building styled the Provincial Government Offices has been erected in the city containing a suite of offices for the use of the Premier and his Ministers on their frequent visits here. Special attention is called to this illustration.

The direct administration of civic affairs falls upon His Worship the Mayor, which position is now ably filled by Mr. Louis Payette and forty-two Lieutenants in the persons of the Aldermen of the city. Engravings of His Worship and Aldermen appear; also a full page illustration of the City Hall where their deliberations are conducted.

We trust the illustrations of our Banks, Monetary and Industrial institutions present a fairly comprehensive idea of our city as a whole.

Situated on the St. Lawrence River, at the head of ocean navigation, Montreal is destined to occupy a foremost rank amongst the cities of the world.

Its site on the Island of Montreal, the largest of a group of islands formed by the confluence of the Ottawa with the St. Lawrence River, one thousand miles from the open sea, is picturesque to a degree.

Behind is the beautifully-wooded Mount Royal, in front the majestic St. Lawrence, and in the distance the mountains of Northern New York.

As the head of ocean navigation it is the door to and from the great interior of the Dominion; the spot where all traffic upon the great waterways of the country must centre. For these reasons Montreal can never lose its maritime and commercial supremacy.

Not only is Montreal the key to the great waterways of Canada, but it is also the chief railway centre of the Dominion—the Canadian Pacific Railway, the Grand Trunk Railway System, and the Grand Trunk Pacific have their head offices in the city. The other railways centering here are the Intercolonial, St. Lawrence & Adirondack, New York Central, Rutland, Delaware & Hudson, Central Vermont, and Great Northern of Canada.

The following are a few facts and figures concerning the city:—

Population . . . . .	(Estimated) 420,000
Taxable Property . . . . .	\$216,840,719
Exempt Property . . . . .	\$55,914,313
Streets . . . . .	200 miles
Paved Streets . . . . .	35 miles
Brick Sewers . . . . .	186 miles
Territory of City . . . . .	6,575 acres
Number of Parks . . . . .	35
Area of Parks . . . . .	615 acres

EDITOR:



CITY HALL



HIS WORSHIP, LOUIS PAYETTE  
Mayor of Greater Montreal

Members of City Council—"GREATER MONTREAL"



ALD. W. BUMBRAY.



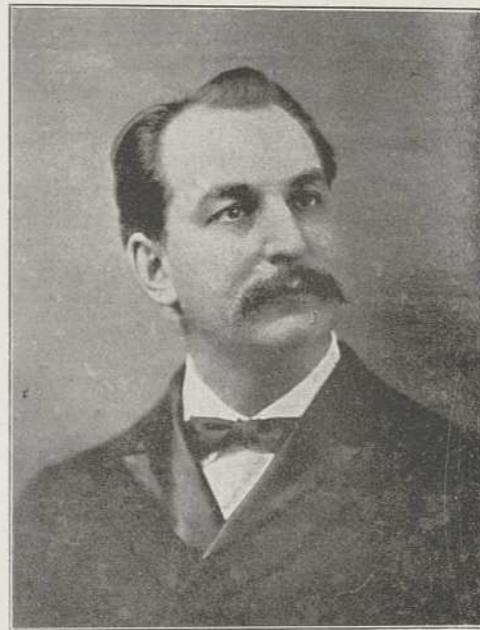
ALD. S. J. CARTER.



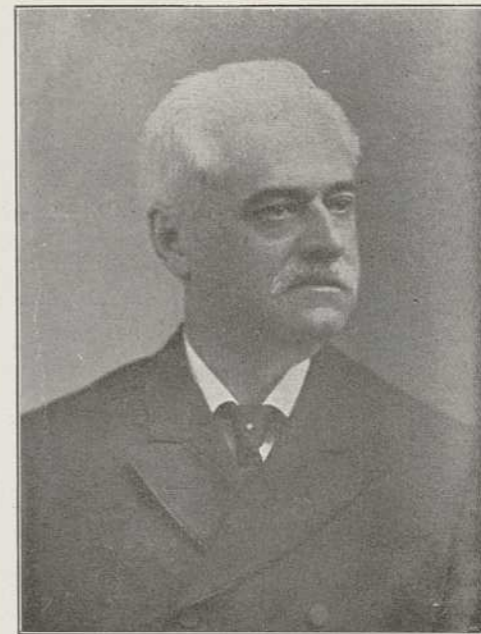
ALD. J. B. CLEARIHUE.



ALD. J. D. COUTURE.

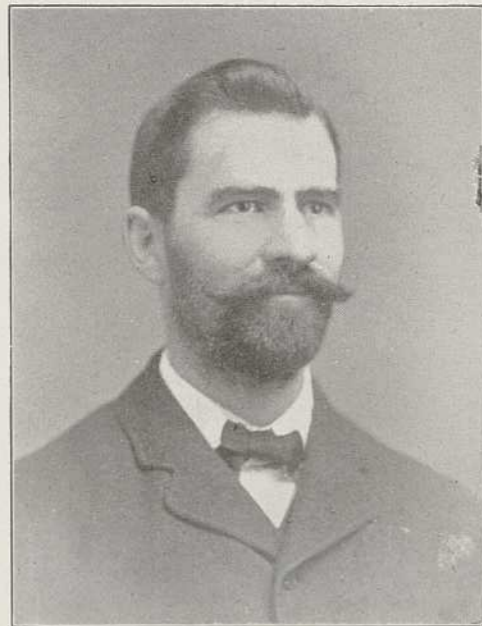


ALD. DR. E. G. DAGENAIS.



ALD. O. DAVID.

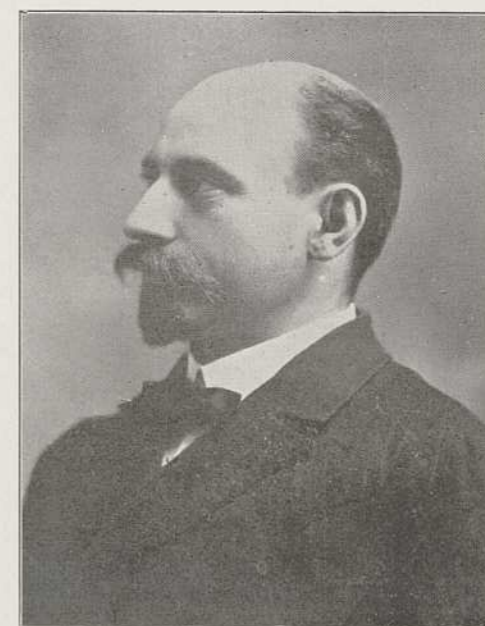
Members of City Council—"GREATER MONTREAL"



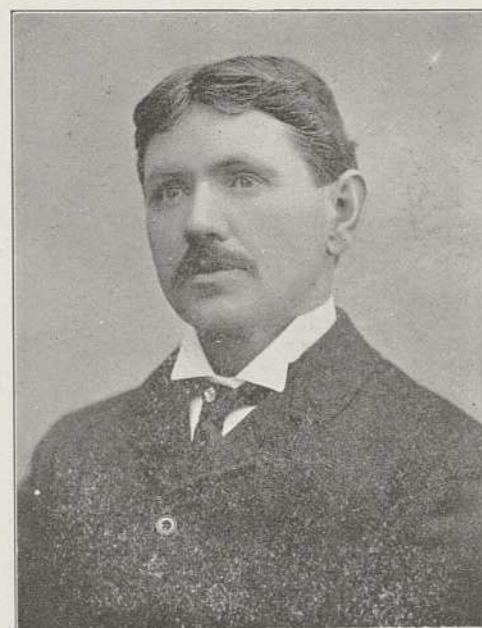
ALD. J. G. DUQUETTE.



ALD. ALEX. D. FRASER.



ALD. DR. J. P. GADBOIS.



ALD. D. GALLERY.



ALD. N. GIROUX.



ALD. E. GUAY.

Members of City Council—"GREATER MONTREAL"



ALD. J. LAMOUREUX.



ALD. L. A. LAPOINTE.



ALD. N. LAPOINTE.



ALD. E. F. LARIVIERE.



ALD. DR. JOS. LAVIOLETTE.



ALD. L. A. LAVALLEE.

Members of City Council—"GREATER MONTREAL"



ALD. N. LECLAIRE.



ALD. E. LESPERANCE.



ALD. V. LEVESQUE.



ALD. J. C. E. LEVY.



ALD. MEDERIC MARTIN.



ALD. J. B. A. MARTIN.

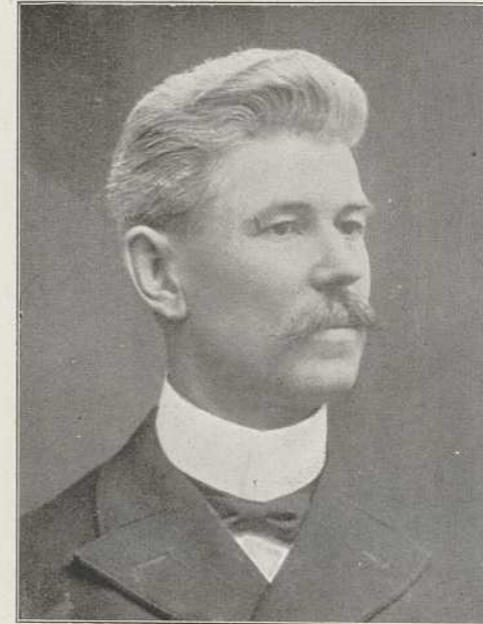
Members of City Council—"GREATER MONTREAL"



ALD. DR. J. MARIN.



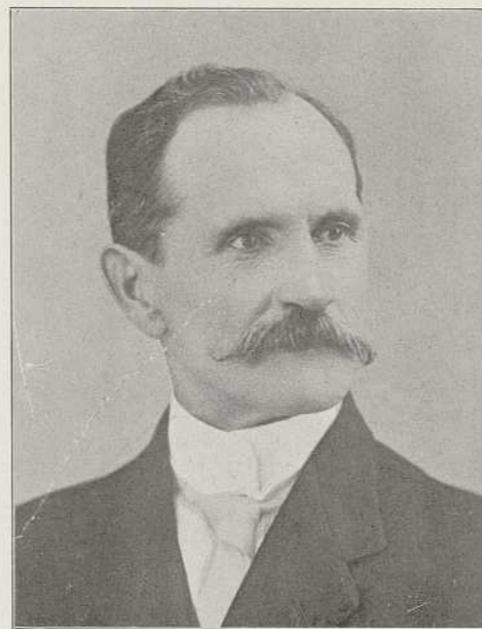
ALD. HONORE MERCIER.



ALD. E. MAJOR.



ALD. W. MOUNT.



ALD. J. McKENNA.



ALD. J. H. NAULT.

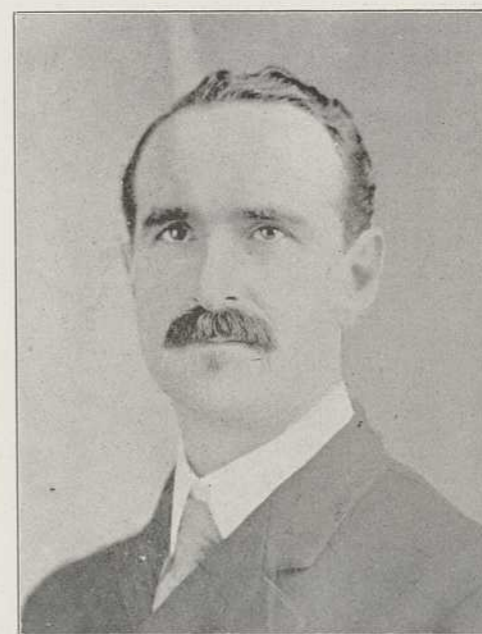
Members of City Council—"GREATER MONTREAL"



ALD. T. C. O'CONNELL.



ALD. W. J. PROULX.



ALD. A. E. PRUD'HOMME.



ALD. C. ROBILLARD.

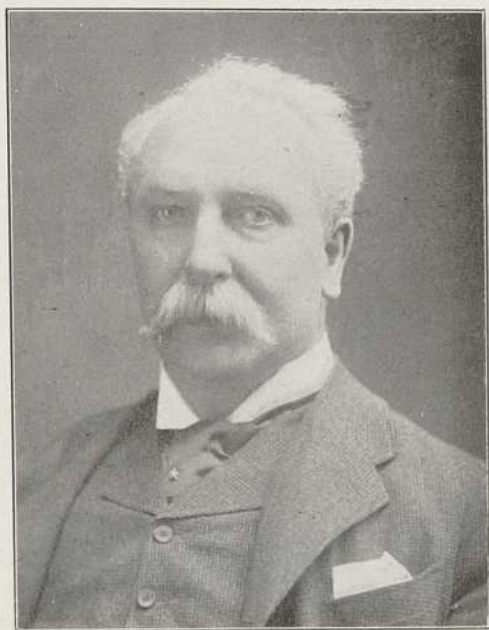


ALD. JAMES ROBINSON.



ALD. JOS. ROY.

Members of City Council—"GREATER MONTREAL"



ALD. G. W. SADLER.



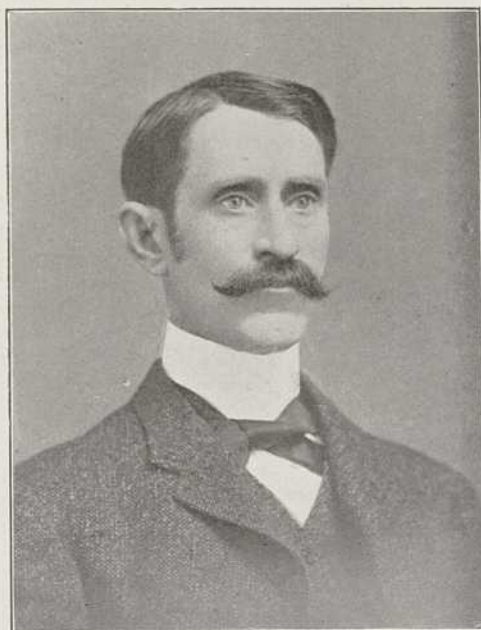
ALD. I. H. STEARNS.



ALD. NAP. SEGUIN.



ALD. R. TURNER.



ALD. J. WARD.



ALD. DR. H. B. YATES.



PROVINCIAL GOVERNMENT OFFICES



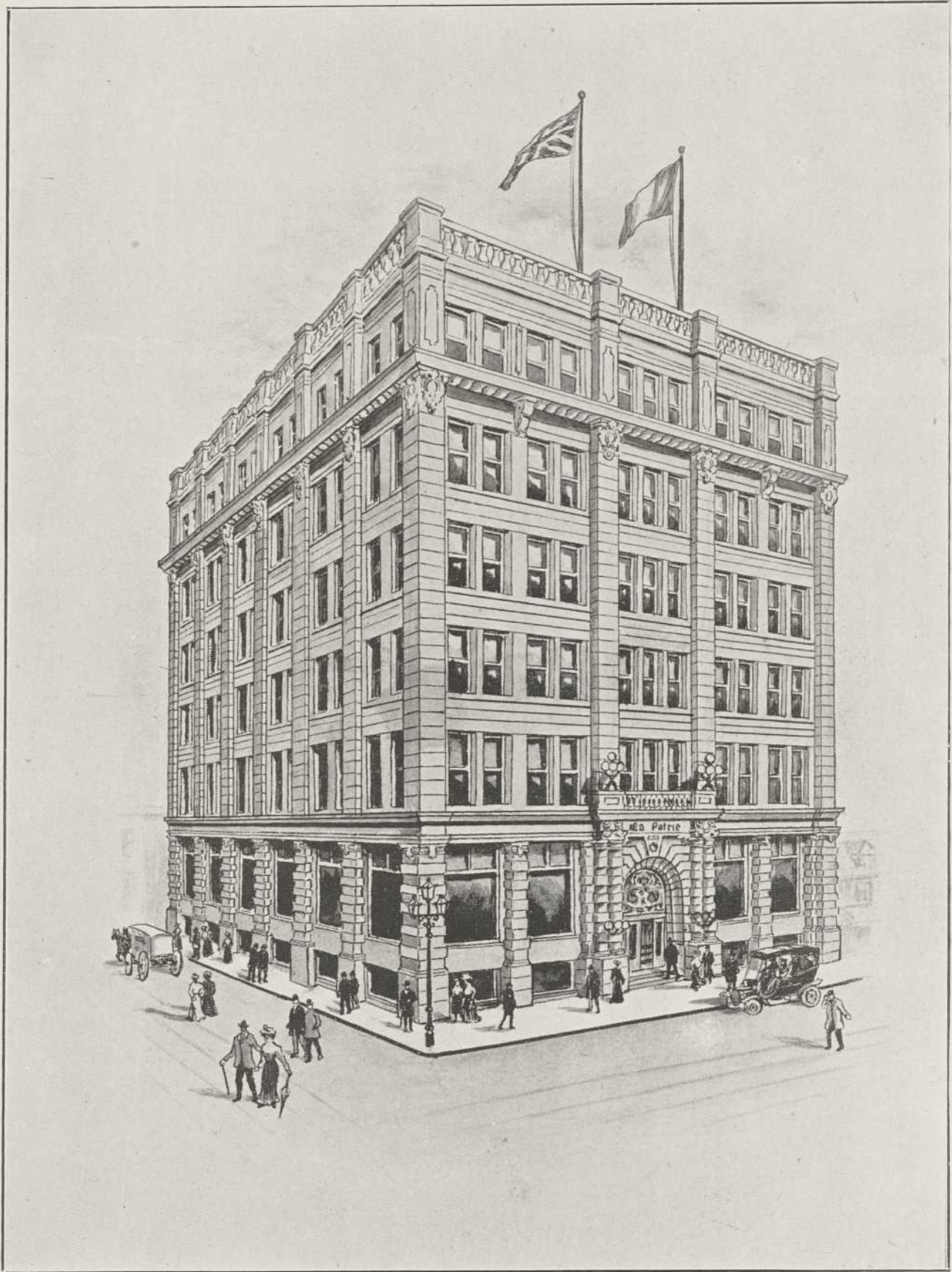
THE HERALD BUILDING



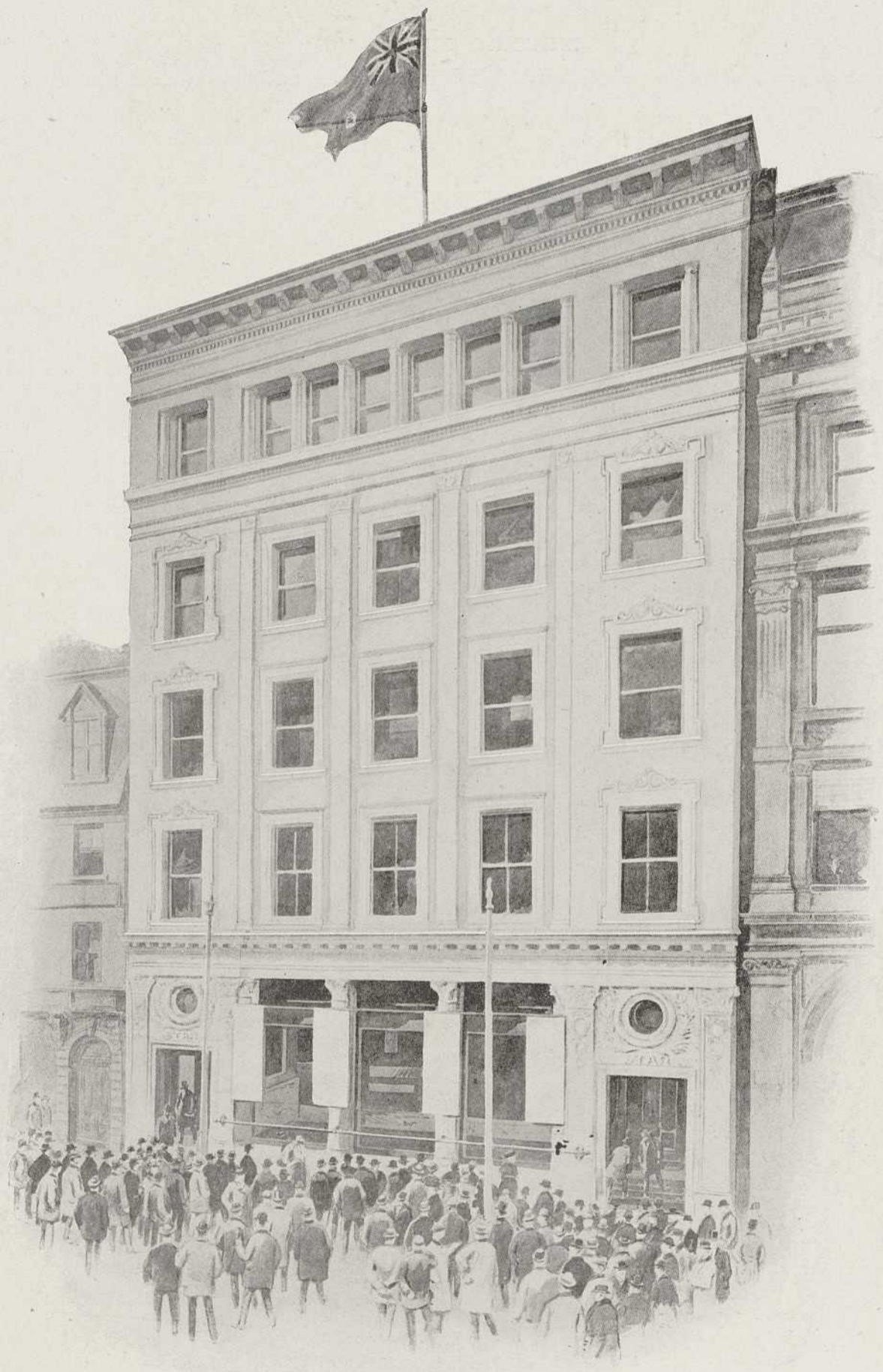
THE GAZETTE BUILDING



LA PRESSE BUILDING



LA PATRIE BUILDING



THE STAR BUILDING



VESTIBULE—BANK OF MONTREAL



INTERIOR—BANK OF MONTREAL



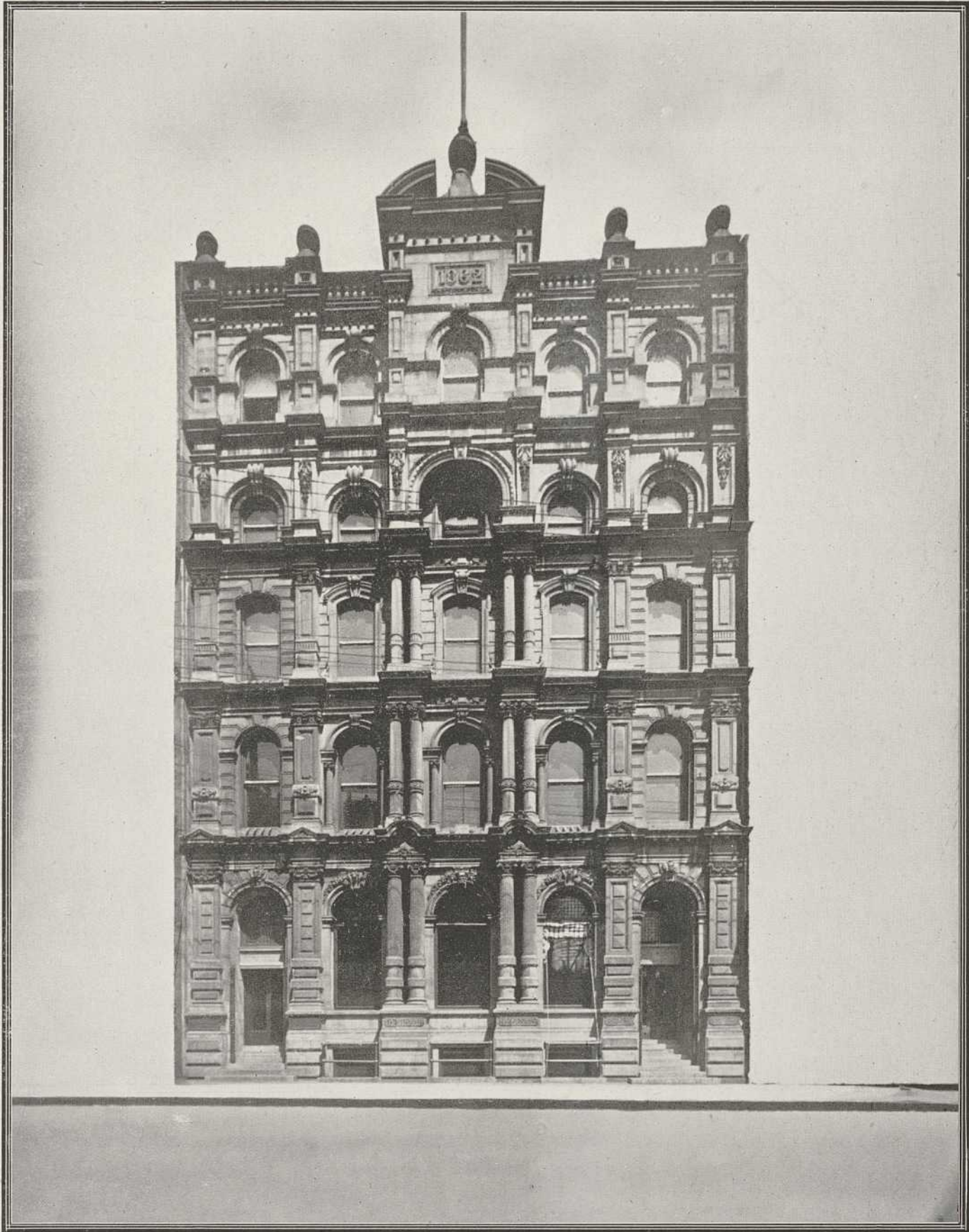
THE MERCHANTS' BANK OF CANADA



ROYAL BANK OF CANADA



EASTERN TOWNSHIPS BANK



BANQUE PROVINCIALE



CANADIAN PACIFIC RAILWAY  
GENERAL OFFICES AND TERMINUS



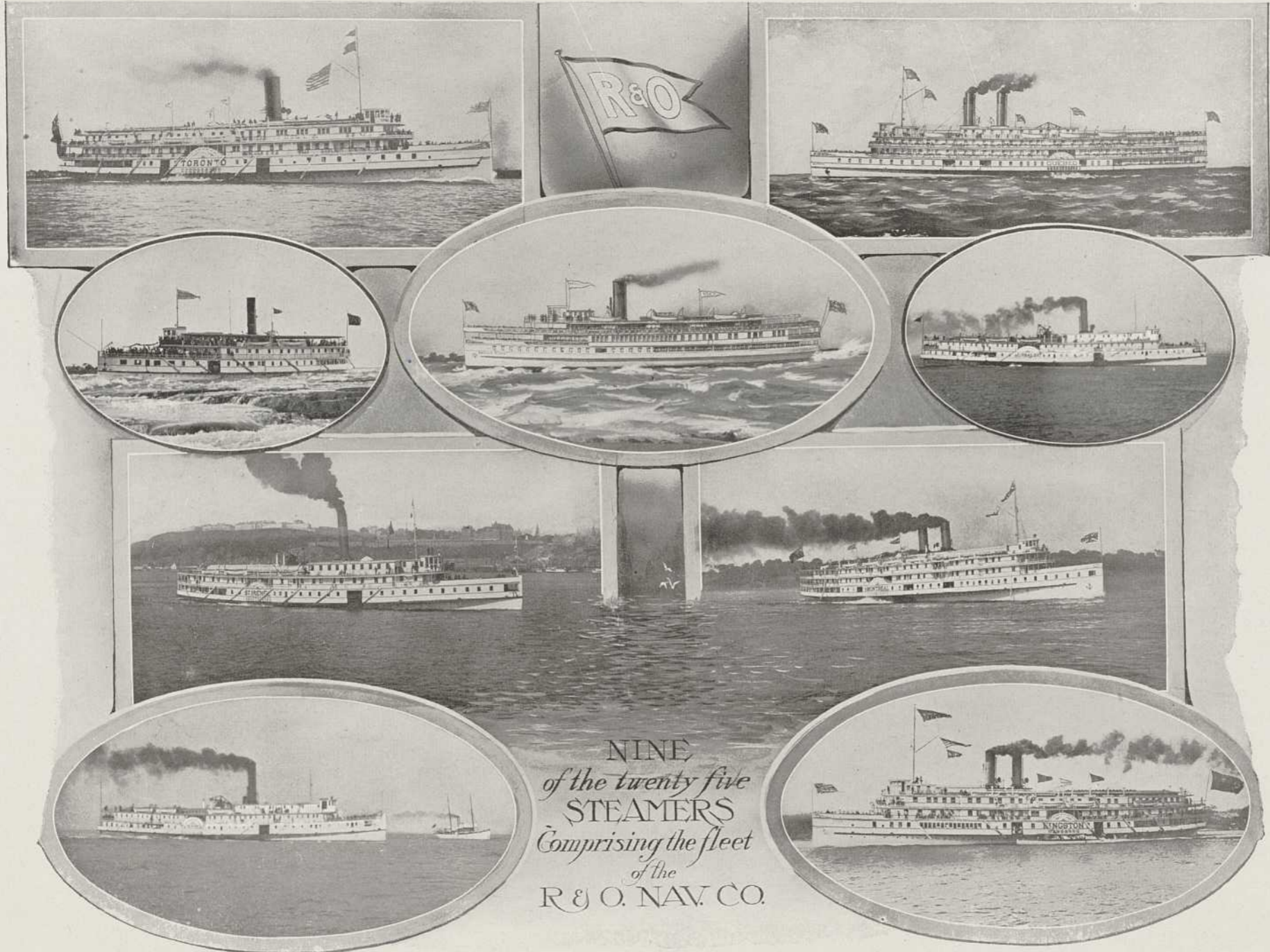
PLACE VIGER HOTEL  
Property of  
CANADIAN PACIFIC RAILWAY COMPANY



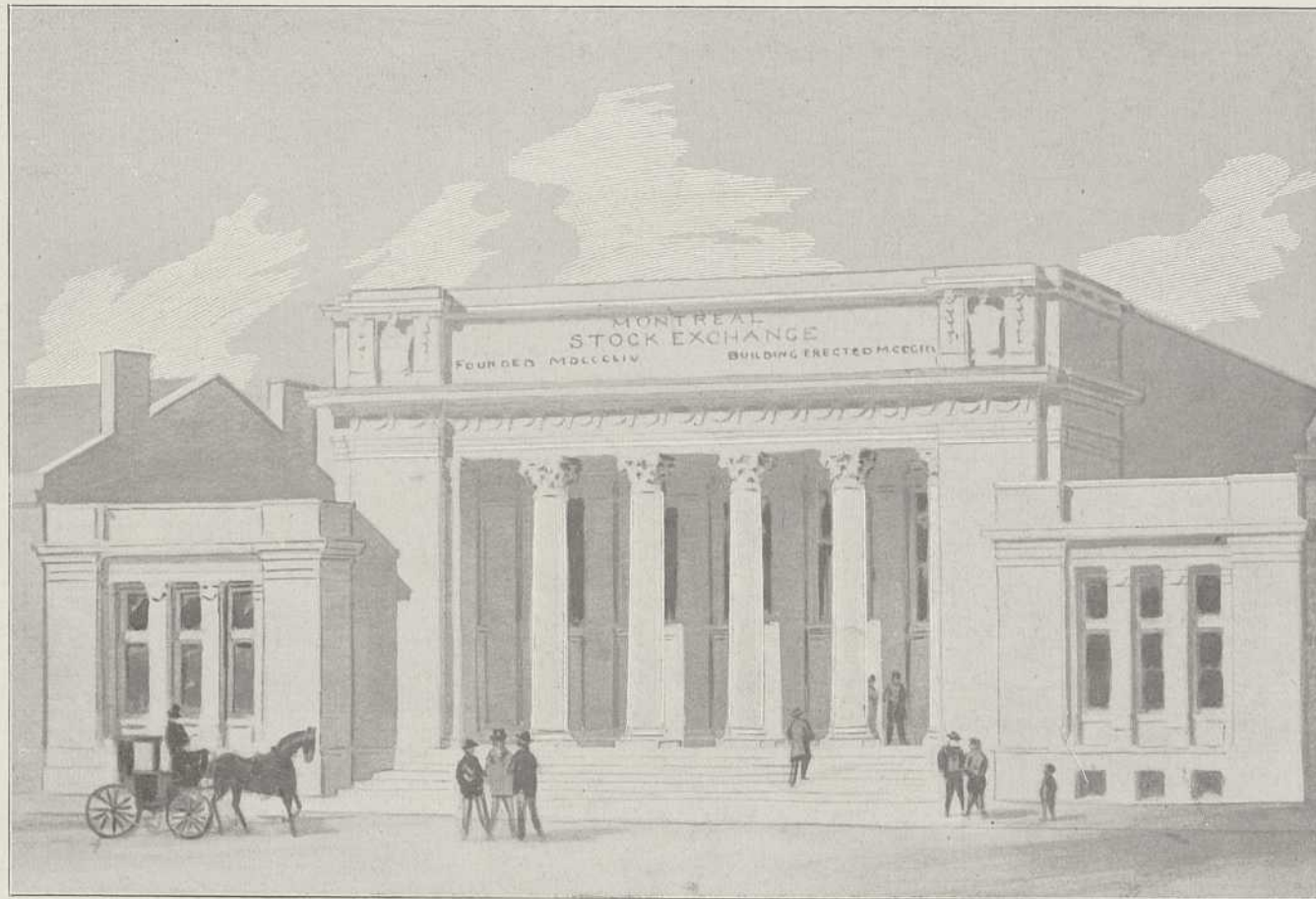
GENERAL OFFICES  
Property of  
GRAND TRUNK RAILWAY SYSTEM



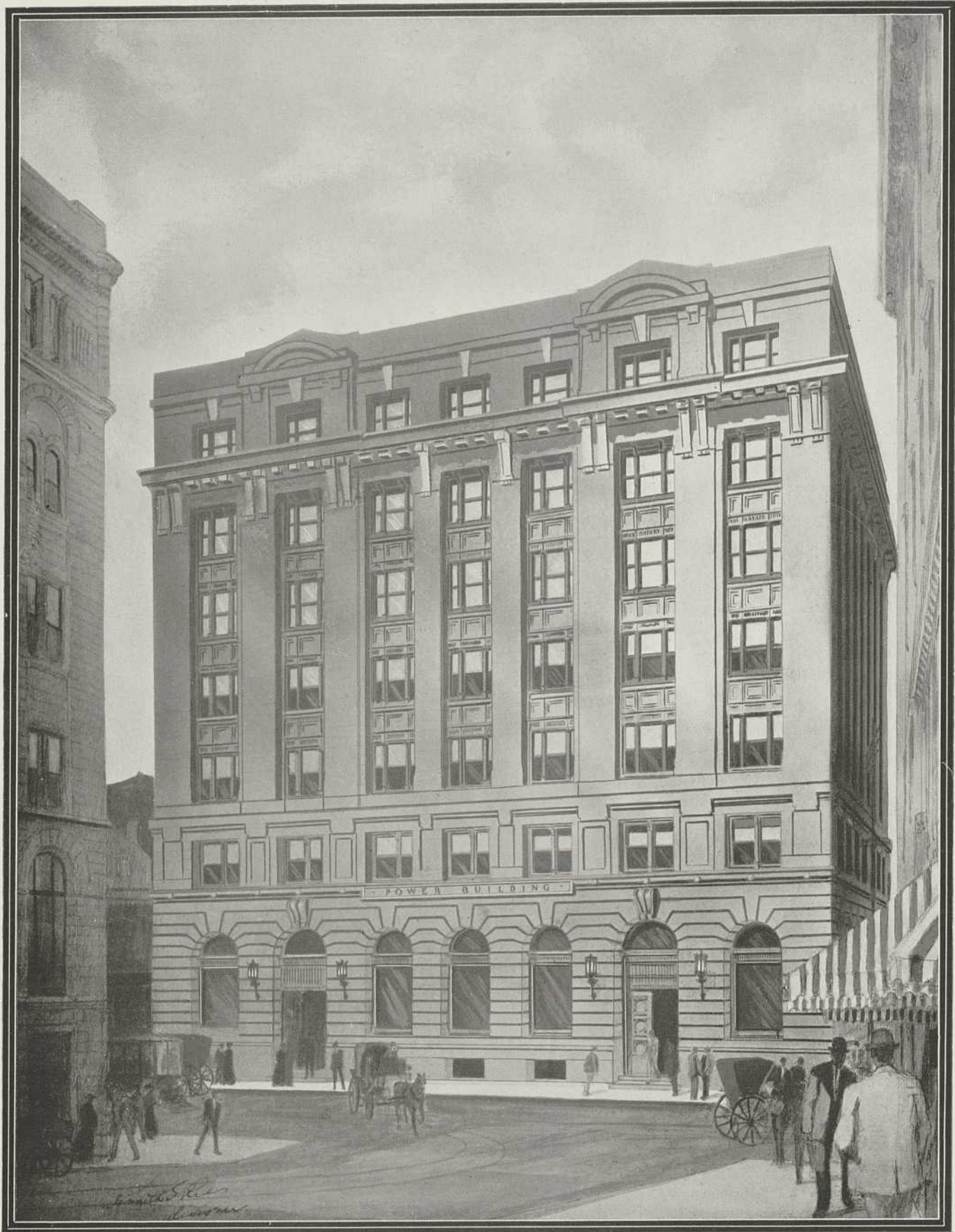
THE CANADIAN EXPRESS COMPANY  
Property of  
GRAND TRUNK RAILWAY SYSTEM



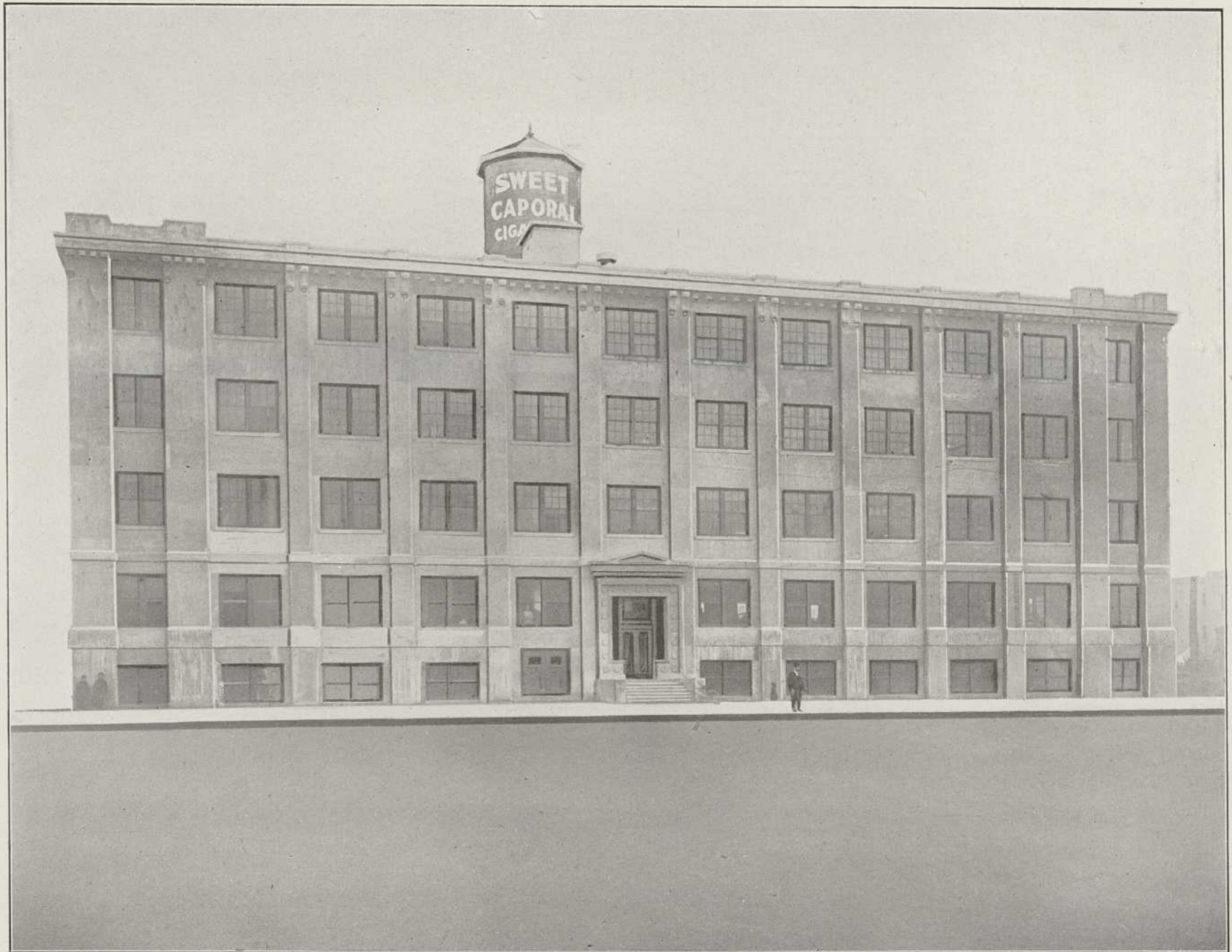
NINE  
*of the twenty five*  
 STEAMERS  
*Comprising the fleet*  
*of the*  
 R & O. NAV. CO.



MONTREAL STOCK EXCHANGE



MONTREAL LIGHT, HEAT AND POWER COMPANY  
GENERAL OFFICES



IMPERIAL TOBACCO COMPANY OF CANADA, LIMITED

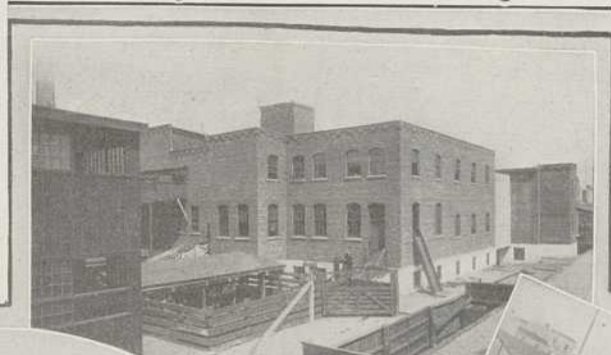


F. H. CARLIN  
 Manager of the Company

# Montreal Stock Yards Co.



1. Abattoir, Cold Storage and Sales Market.
2. Marking Chutes and Unloading Platform.
3. Cattle awaiting Shipment.
4. Montreal Stock Yards, Main Entrance.
5. Main Receiving Yard and Entrance to Cattle Stables.
6. Marking Chutes and Local Receiving Yard.
7. Interior View of Horse Stables—capacity 300 horses.
8. Remount Horses awaiting Embarkation.
9. Interior View of Cattle Stables.





DOMINION SQUARE AND WINDSOR HOTEL





**LA CORONA HOTEL. MONTREAL, CANADA.**

**W<sup>o</sup> E. DORAN. ARCHITECT.**



SUN LIFE ASSURANCE BUILDING



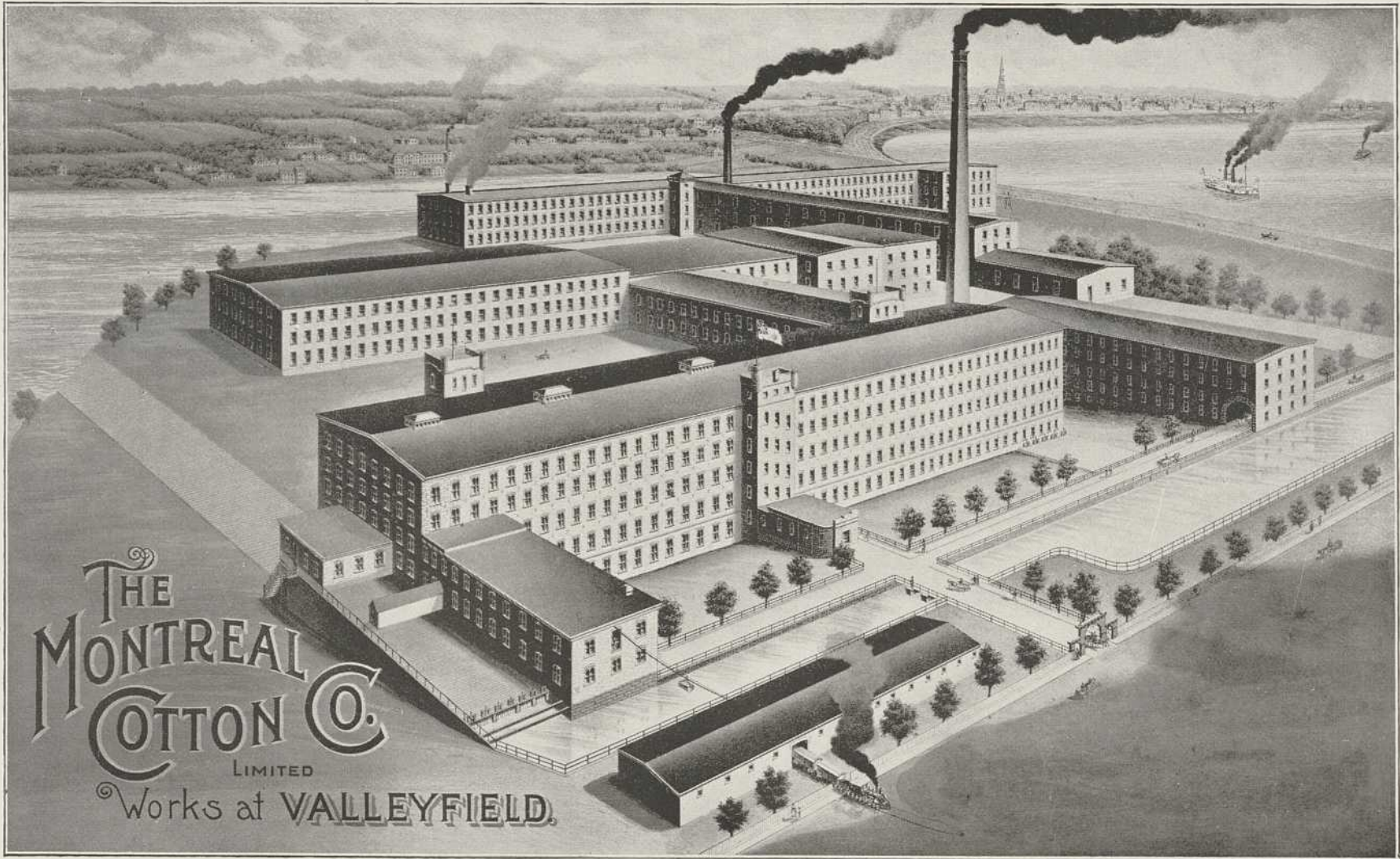
CANADA LIFE ASSURANCE BUILDING



NEW YORK LIFE INSURANCE BUILDING



GROUP OF INSURANCE BUILDINGS





THE REDMOND BUILDING  
WHOLESALE HATS AND FURS



UNITED SHOE MACHINERY COMPANY

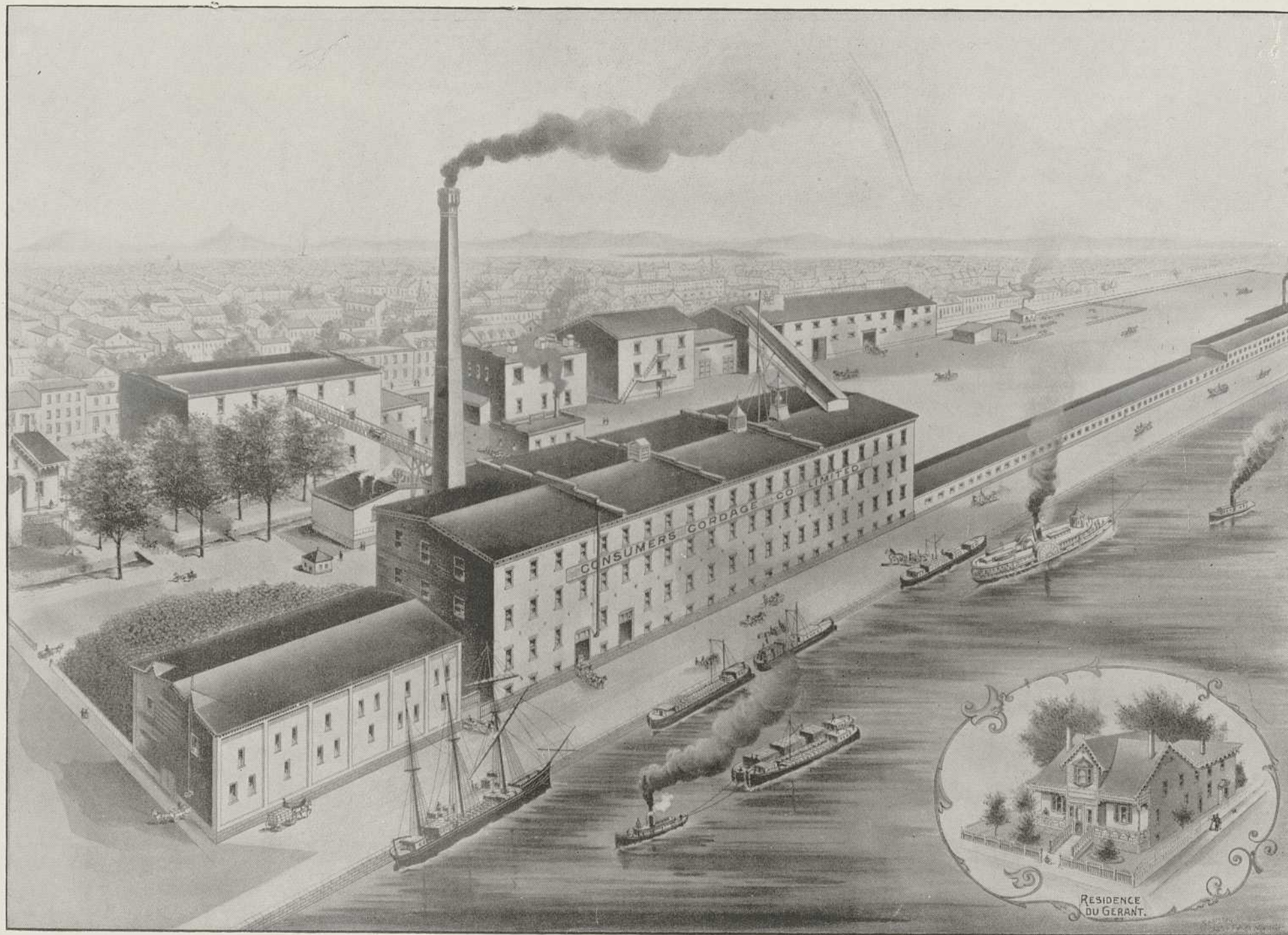


AMES-HOLDEN LIMITED  
BOOT AND SHOE MANUFACTURERS

SF



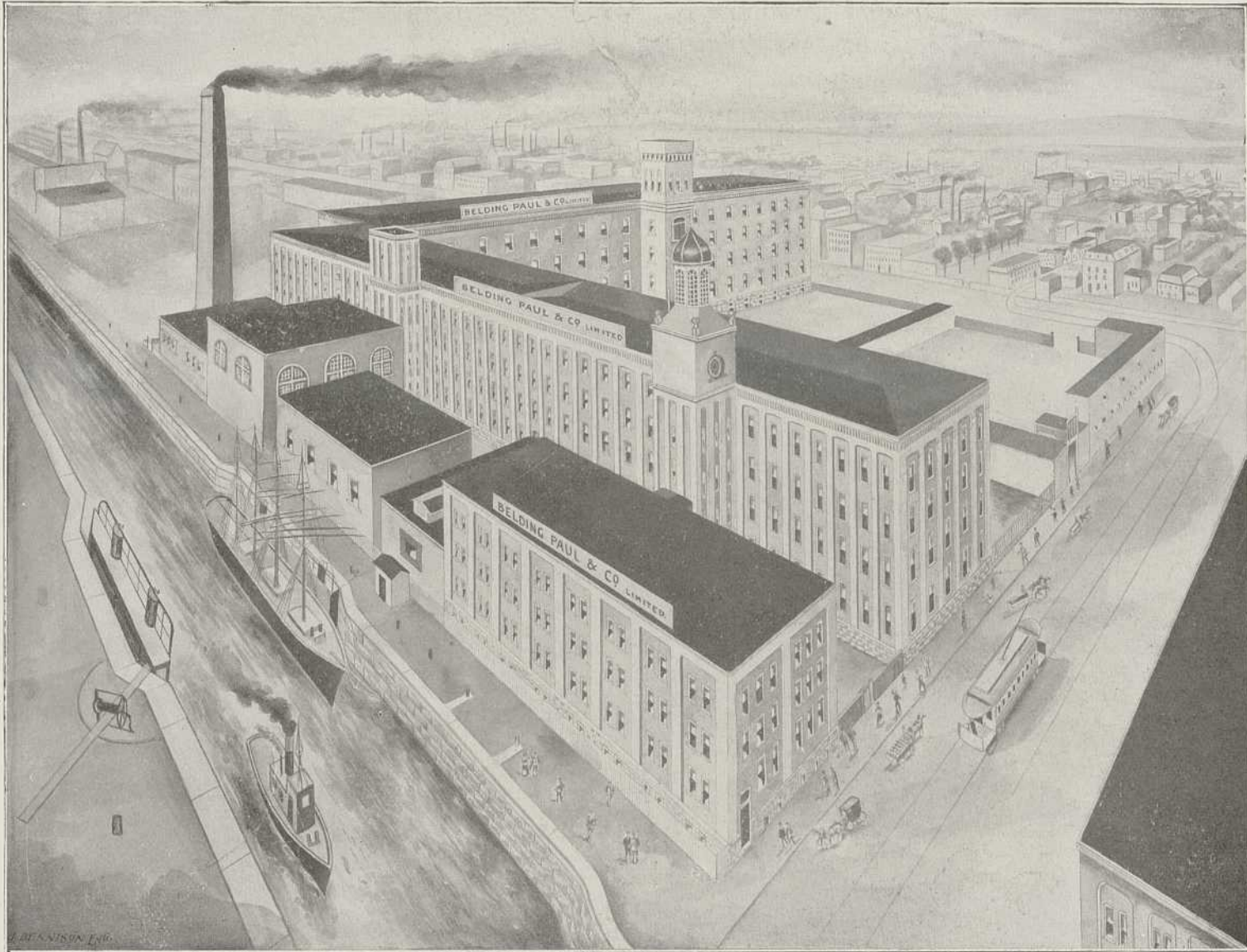
THE WELLS & RICHARDSON CO., LIMITED  
DIAMOND DYES, ETC.



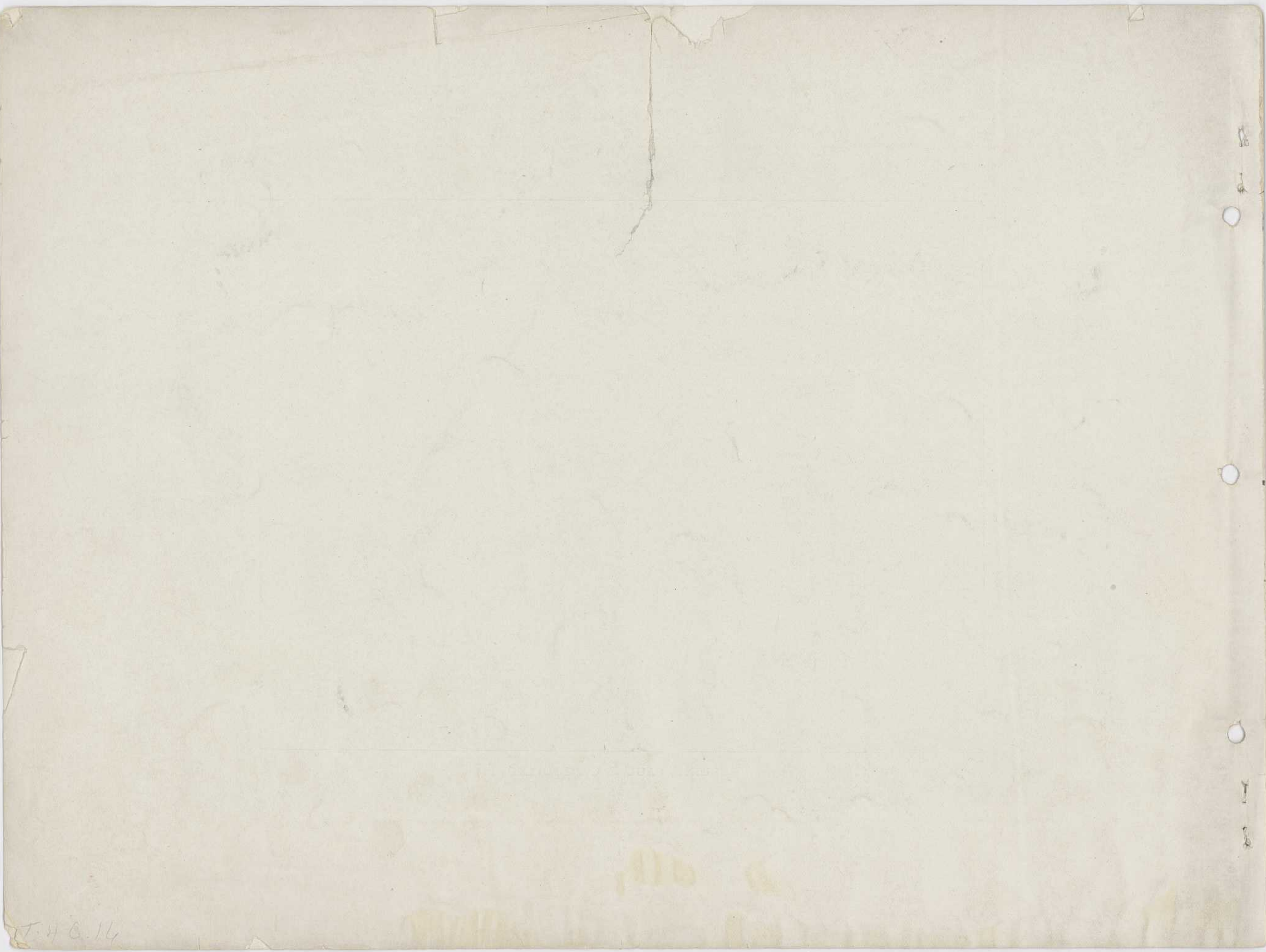
CONSUMERS CORDAGE CO., LIMITED



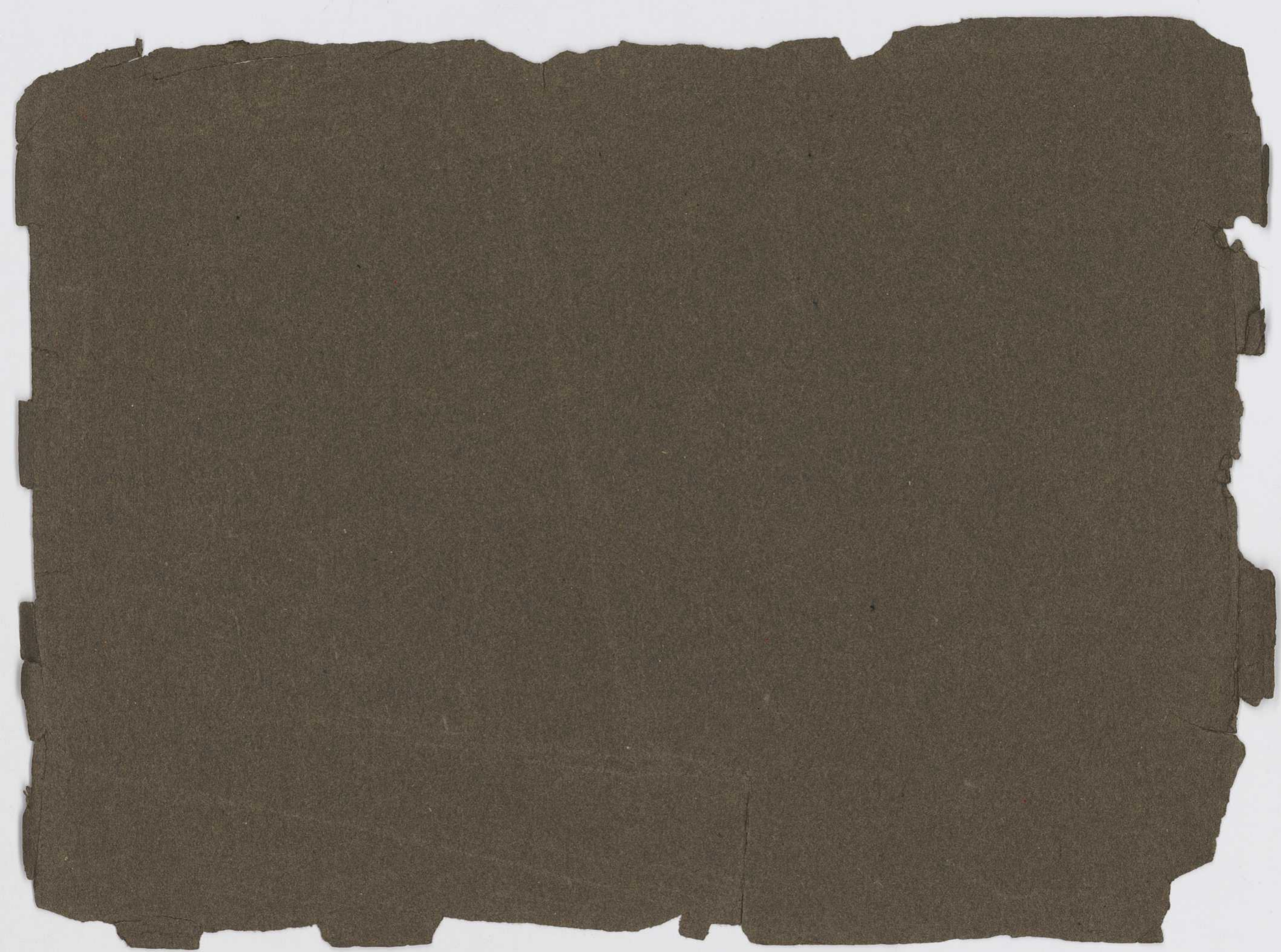
GENERAL POST OFFICE



BELDING, PAUL & CO., LIMITED



T. 4. 0. 14



BNQ



C 000 124 744

124744

F