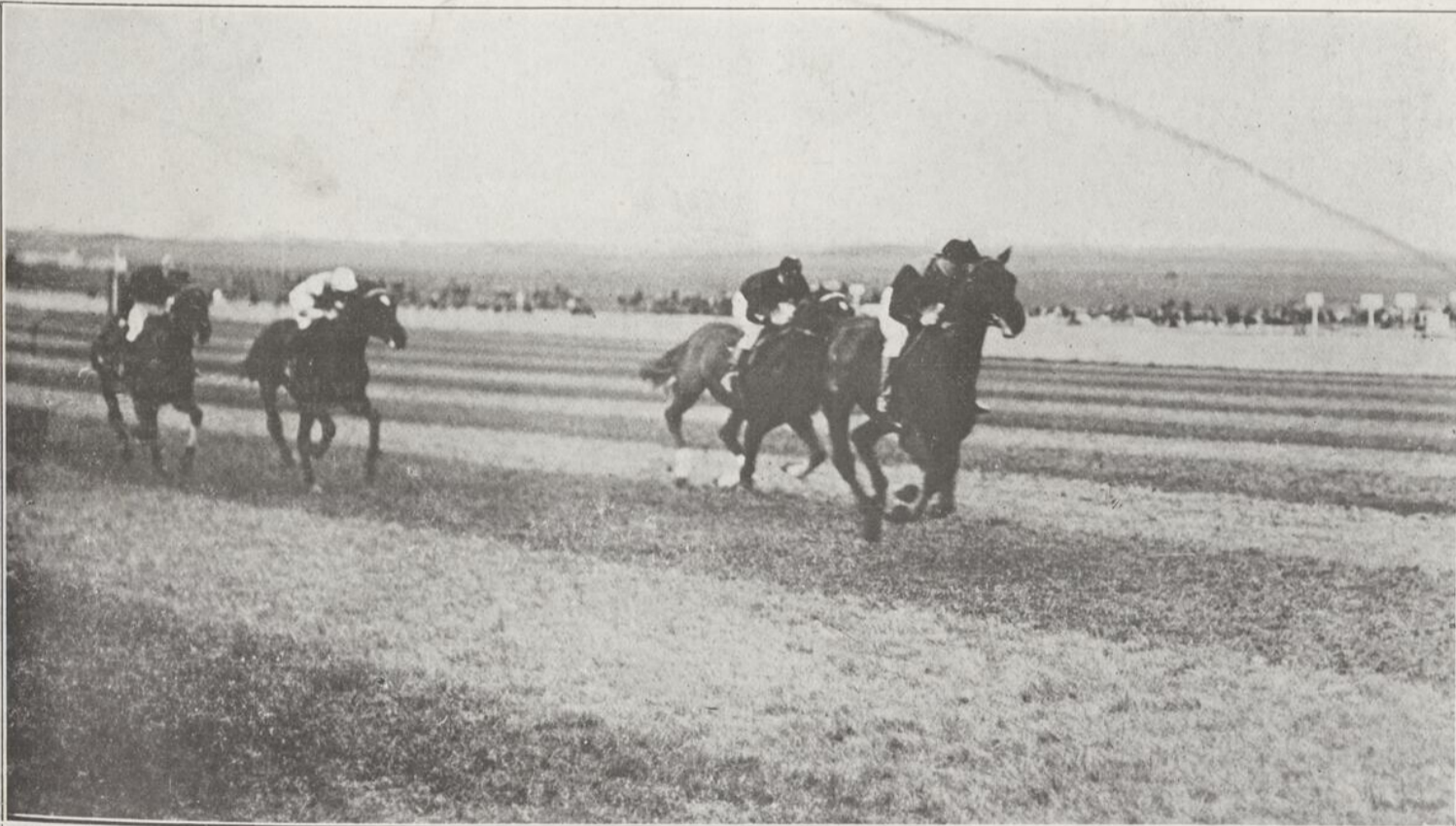


## Motherland in Fever of Political Unrest; Mr. Churchill Addressing 30,000 People in the Streets



THE ENGLISH MOTOR-CAR AS A PLATFORM FOR STATESMEN ON THE "STUMP"—The above illustration portrays a scene that occurred during the progress of the recent by-election in North-West Manchester, Eng. It shows the defeated candidate, Mr. Winston Churchill, making an appeal to his electors from the box of his automobile. Mr. Churchill has evidently said something that has favorably impressed the crowd, as many of the men are cheering the speaker.

## The Standard's Collection of Striking Pictures Illustrative of Racing and Football In Great Britain



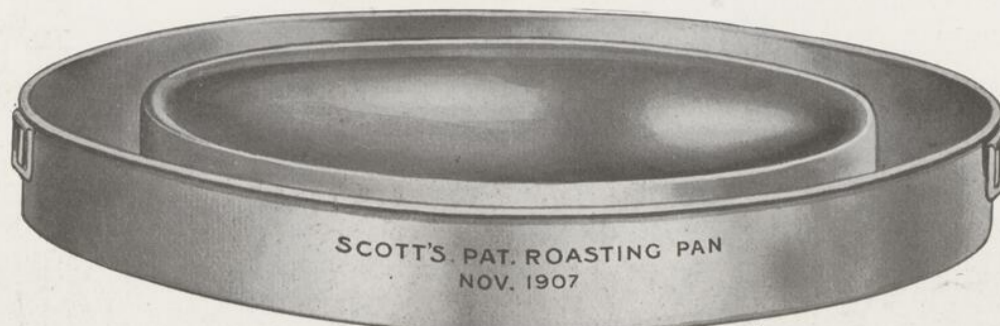
WINNERS ON THE NEWMARKET TURF AND ARMY FOOTBALL CAMPUS—Reading from left to right, the illustrations portray:—Top row: (1) "Perrier," King Edward's Derby favorite, winning the Biennial Stakes at Newmarket, with Sir R. Waldie-Griffith's "Merganser" a close second. (2) Leading in the King's colt, "Perrier," after the race for the Forty-ninth Biennial Stakes at Newmarket. Bottom row: (1 and 2) The Princess of Wales distributing medals to winners in the Army Cup Final (Football) at Aldershot. The contestants in this great match were teams from the 2nd Battalion Lancashire Fusiliers and the 4th Battalion King's Royal Rifles, and the game resulted in a victory for the Rifles by one goal to nil. The last-named corps is a unit in the British Army that spent many years in Canada about half a century ago. In the first of the two lower illustrations Lord Roberts (in the foreground) will be noticed talking to a friend who stands next to the Prince of Wales; and, in the second, will be seen Prince Edward of Wales, heir-presumptive to the British Crown, as well as Prince George and Princess Victoria of Wales.

# A Wonderful Culinary Invention

Canadians have in the past secured many patents, but the distinction is given Mr. Percy Scott, of this city, of having invented something which bids fair to revolutionize the question of cooking, when applied to meats in particular, as guaranteed by his patent Roasting Pan here minutely described.

The invention is simplicity itself—and wherever used, either in palatial club or humblest household, the results are the same—a point of interest to every housewife, is the saving of meat in the process of roasting, as here shown, which alone warrants its adoption in every kitchen, viz.:

Beef Cooked by Old Method.		Beef Cooked in Scott's Patent Pan.	
Weight of Beef . . . . .	6 lb. 10 oz.	Weight of Beef . . . . .	7 lb. 2 oz.
Weight after cooking . . . . .	5 lb. 10 oz.	Weight after Roasting . . . . .	6 lb. 13 oz.
Loss . . . . .	1 lb. 0 oz.	Loss . . . . .	0 lb. 5 oz.

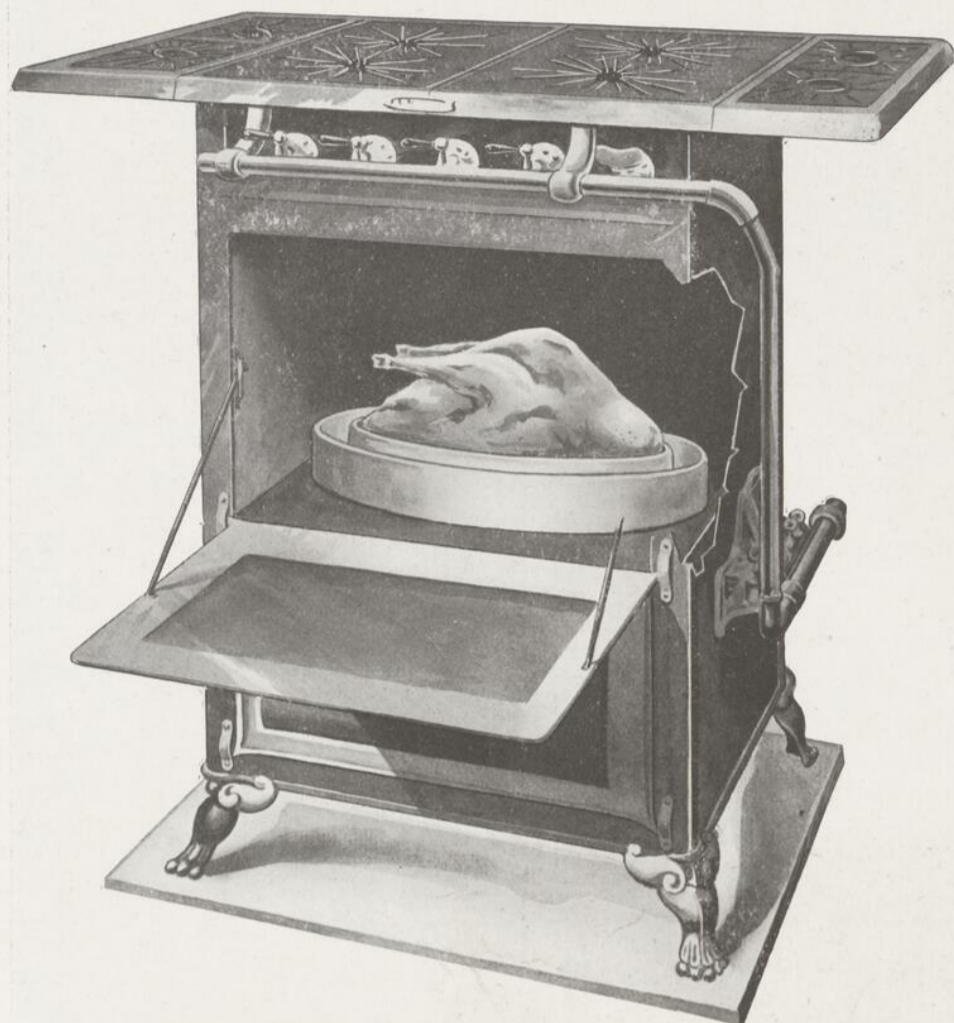


### INSTRUCTIONS.

The operating is simplicity itself. Place the Joint, Fowl, or Fish on central raised portion, place pan on floor of oven, fill circular space almost full of water, shut oven door and do not open until joint is finished. Should much gravy be required, about 15 minutes before taking out joint add a cup of water to raised portion. This pan has no cover, it does not steam the joints or burn them as the covered article invariably does, but it roasts and browns everything to perfection. Whatever you roast on this simple pan will be found sweeter, more juicy, and much more tender than is possible to attain on the old-fashioned and covered pans.

### The Main Features of the Pan are as follows:

1. Absolutely no burning.
2. No smell during cooking.
3. No waste.
4. No watching.
5. No basting.
6. No dirty burned fat to clean from pan.
7. 25 per cent. less gas or coal used.
8. It is pressed from one piece of metal and has no cover.
9. The fat is separated from the juices of the meat and clarified in the water space.
10. An absolutely Sanitary Pan.



This illustration is exactly what you have when using Scott's Roasting Pan—no burning, no smell during cooking, no waste, no basting, and a pan free of all burned fat.

Roast of Pork (Old Way).		Roast of Pork (Scott's Patent Pan).	
Weight before Roasting . . . . .	4 lb. 8 oz.	Weight before Roasting . . . . .	4 lb. 8 oz.
After Roasting . . . . .	3 lb. 4 oz.	After Roasting . . . . .	4 lb. 6 oz.
Loss . . . . .	1 lb. 4 oz.	Loss . . . . .	0 lb. 2 oz.

The result here given is sufficient evidence that there is as much difference in the old Roasting Pan and Scott's Patent Roasting Pan, as in a comparison of the old Horse Car vs. Trolley Car.

### From a Thrifty Housewife

*Dear Sir,—I have made a test of your Patent Roasting Pan, and I find it very much better than the old pan—there is no smell of burned fat, the gravy is sweet and delicious; the meat sweeter and much more tender. The pan will pay for itself in a very few weeks, as nothing is lost. It is the cleanest pan I have ever seen,—indeed I call it a woman's friend. I placed my 10 lb. Roast on the raised part of the pan, placed pan in the oven as directed, then filled the space around it with water—that's all the attention it requires. No basting is necessary. I am surprised at the results. Believe me, yours truly, MRS. D. McALLISTER, 261A Gain St., Montreal.*

### The Highest Endorsation

*Mr. Percy Scott: I duly received a sample of your Patent Roasting Pan, also a letter from The Davidson Mfg. Co., asking my opinion of the article. On Saturday last I tested your pan with an 18 pound Ribs of Beef, and I must admit that your Roasting Pan is simply all that you claim for it, and more. Allow me, Mr. Scott, to congratulate you most highly on your invention, for which I predict the greatest success, as every lady will have one in her household, owing to the fact that all smell is done away with and the best results assured, all of which I personally endorse. Yours most respectfully, (Signed), H. SCHNEIDER, Chef St. James's Club Cuisine, Montreal.*



This illustration shows at a glance the construction of the pan, which is stamped out of one piece of metal—has no seams whatever, and after usage is as easy to clean as the ordinary soup-plate—which is a revelation to the user of the old-fashioned pan.



This will appeal to the average housewife, the continual basting required by the old method, and as a result of the escaping fumes and smell of burnt fat, every room from kitchen to hall has the kitchen odor—not counting the personal discomfort endured by the housewife.

Wherever introduced to date, Scott's Patent Roasting Pan is responsible for a great deal of "Pan-talk," and it is safe to assume that such an article of absolute merit will in a short time be found in every well-appointed household.

The Davidson Manufacturing Co., of this city, is busily engaged in the manufacture of this pan, and the inventor, Mr. Percy Scott, is assured from the many orders coming in, that his invention meets with the approval of a discriminating public.



TRIBUTE TO A FORMER MONTREALER—The monument on Bienville Square, Mobile, Ala., erected in 1904 in honor of Jean Baptiste Le-Moyne, Sieur de Bienville, who was born at Montreal, Canada, in 1680, and died in 1768. He became a naval officer of France and Governor of Louisiana. In 1711 he founded Mobile, in the State of Alabama. (Photo by courtesy of P. D. Gordon.)



BEGINNING LIFE ON A PRAIRIE WHEATFIELD—An Austrian homestead in the Riding Mountains, Northern Manitoba. (Photo by courtesy of W. P. Walker.)



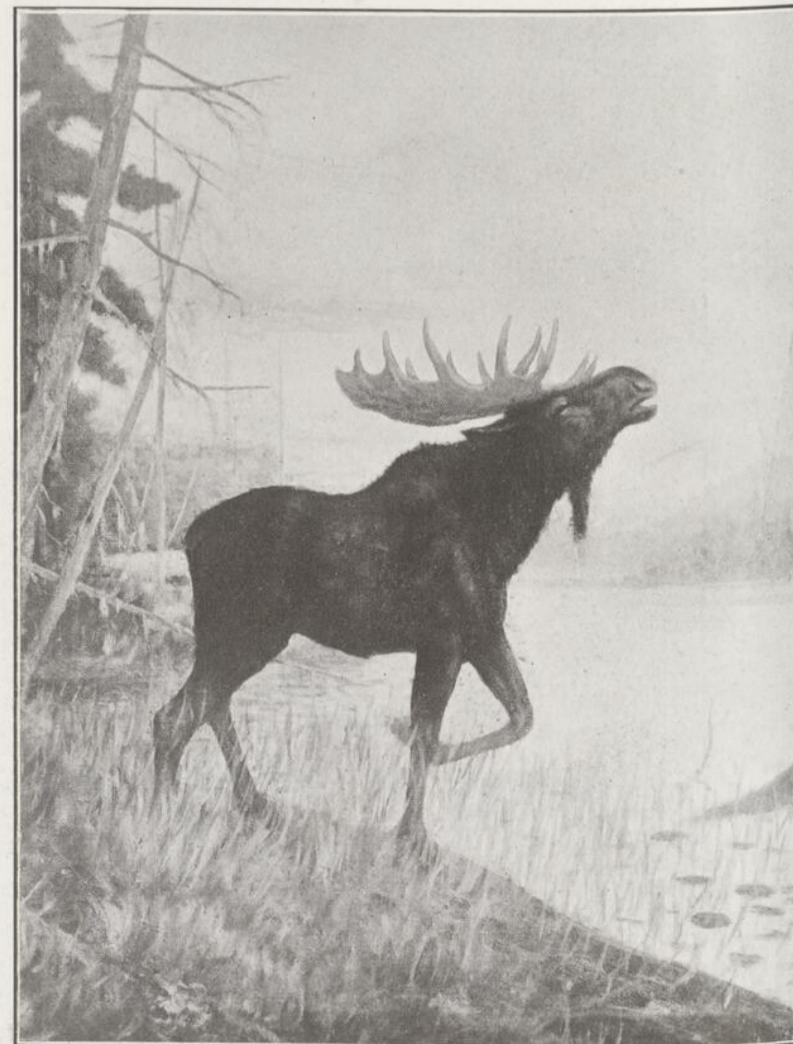
CHAMPIONS OF INTERMEDIATE CANADIAN AMATEUR HOCKEY LEAGUE, 1908—Members of the Sherbrooke Hockey Club. Reading from left to right, their names are:—Top row, W. H. Southwood (com.), C. L. Spafford (com.), L. Hyndman (right wing), A. E. Wiggett (pres.), H. A. Hyndman (sec. and c. point), O. W. Maguire (com.), W. H. Brent (treas. and manager). Middle row: Geo. Parsons (vics-pres.), M. Thompson (defence, sub.), A. Baker (centre), Geo. Povey (capt. and rover), H. Atto (left wing), E. Arguin (goal). Bottom row: N. L. Wiggett (point), and F. Ames (forward, sub.). (Photographed specially for The Standard.)



MEMBERS OF THE RAILROAD YOUNG MEN'S CHRISTIAN ASSOCIATION SWIMMING CLUB (1907-1908), POINT ST. CHARLES—Reading from left to right, their names are:—Top row: W. H. Vincent (hon. treas.), G. A. Bailey, F. Nicholls, W. D. Johnston, A. White, G. Lewis, W. Everett. Middle row: F. E. Pain, G. M. Mitchell, E. H. Selby, E. Pryce (president), G. S. Tucker (hon. sec.), R. S. Patrick, C. Newman. Bottom row: G. D. Marshall, H. Cherry, R. J. Stallard, W. Harrison, Capt. A. Pearson, E. G. Williams, F. Stephenson. (Photo by Gordon, St. Catherine street West.)

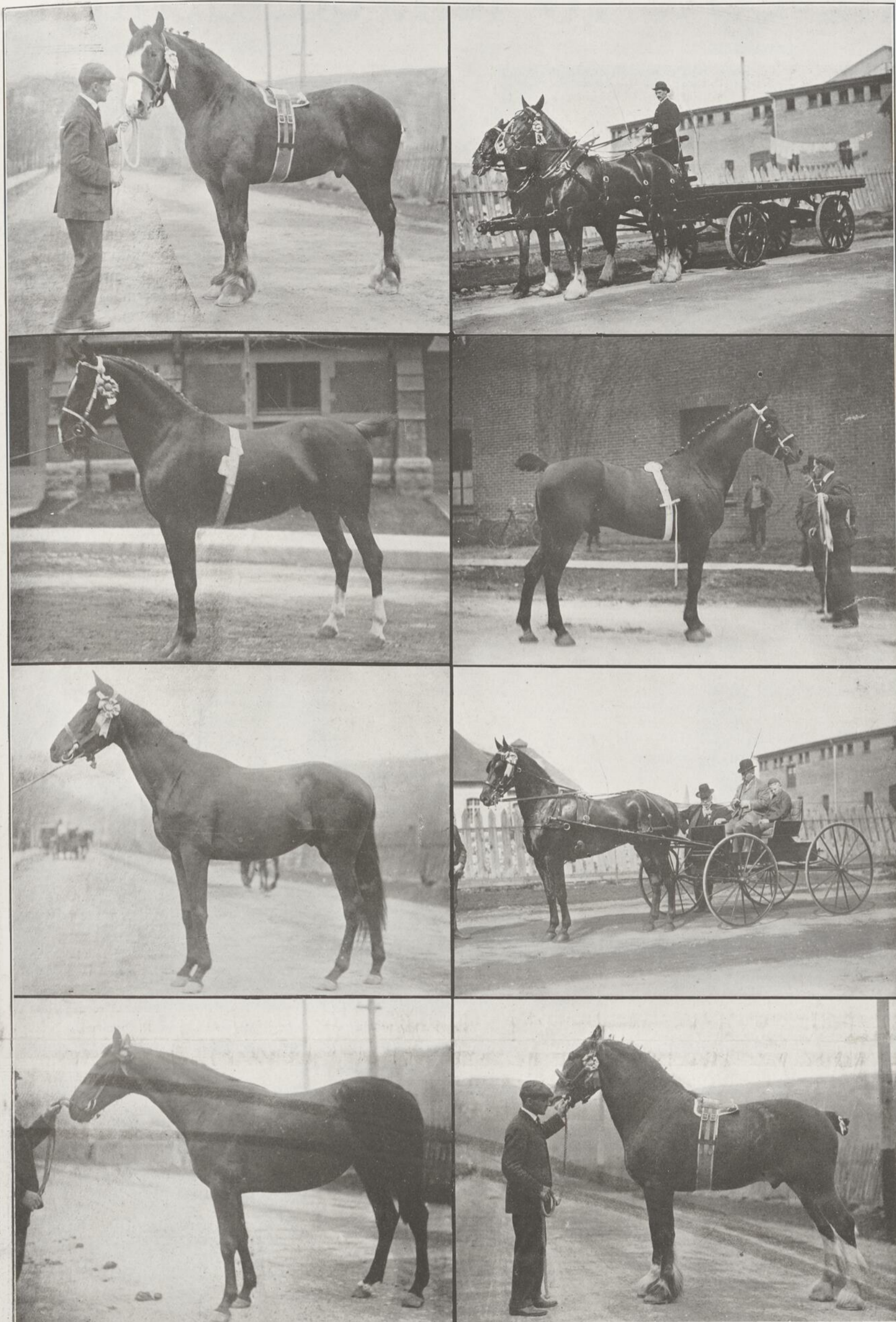


QUEEN ALEXANDRA'S NEW SEASIDE BUNGALOW—This extremely attractive home was recently built by Her Majesty on the seashore at Sandringham, and thither she will repair during the warm summer days of the present year. Its architecture is decidedly unique, and the Latin motto surmounting the gable of the roof will bring to mind the Biblical saying: "Except the Lord build the house, their labor is but lost that build it." The main entrance door, it will be noticed, takes the form of a portion of a lifeboat.

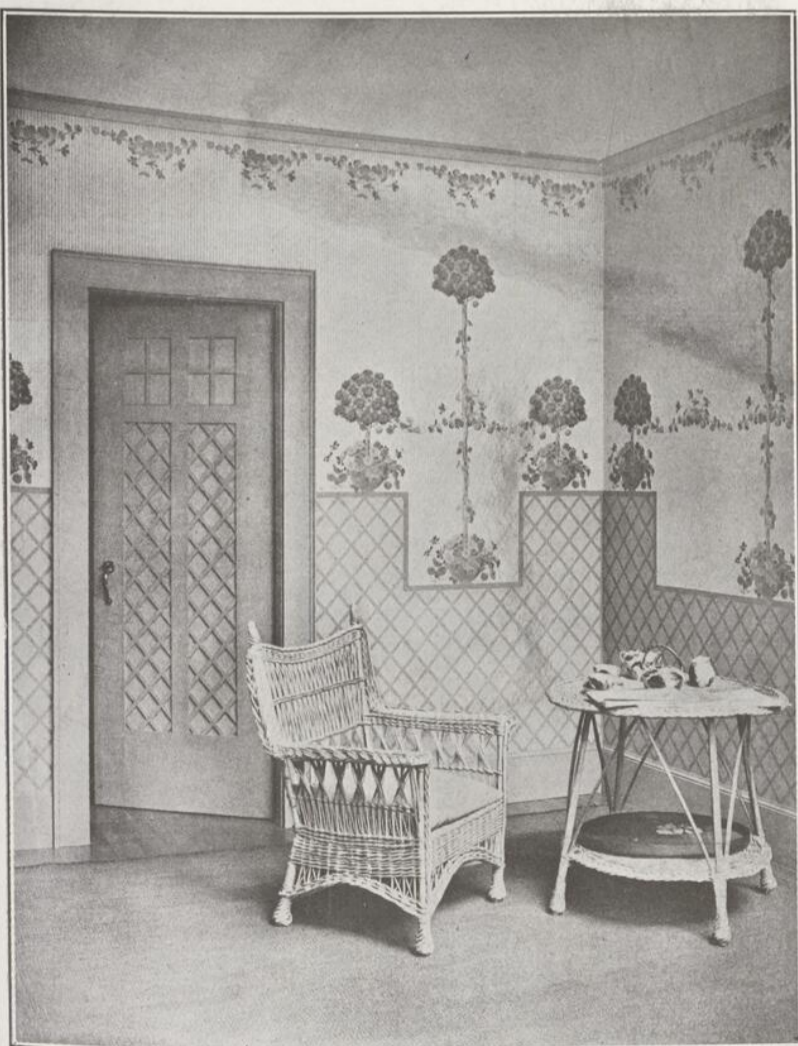


"THE ANSWER TO THE CALL"—The original of this interesting picture was exhibited at the recent Sportsman's Show in the Arena, being an enlargement from a small photo taken in the New Brunswick woods, near Miramichi. It shows a bull moose in the act of answering a challenge from the other side of the water. Moose are very plentiful in the New Brunswick forests. (Photo by courtesy of the Intercolonial Railway.)

## Some of the Prize-Winners at the Montreal Horse Show



PRIZE-WINNERS AT THE HORSE SHOW—The above series of pictures show a few of the horses which managed to secure prizes at last week's Show. Reading from left to right, their names are:—1st Row: Baron Brown, 1st in Class 9; Nellie, 1st in Class 17. 2nd Row: Stillington Mashers, 1st in Class 6 (this horse injured its fetlock shortly after the prize had been awarded); Ryedale Revival, 2nd in Class 6. 3rd Row: Daniel O'Connell, 1st in Class 11; Clansman, 1st in Class 26. 4th Row: Squaw, 2nd in Class 11; Acrobat, 1st in Class 8.



This Photo gives only a suggestion of one of the many interiors which we carry in stock. We would be glad to have you call and see our line or communicate with us.

**THE C. B. ROUTLEY COY.**  
530 ST. CATHERINE STREET WEST,  
262 QUEEN ST. W., MONTREAL. 379 GEORGE STREET, PETERBORO.

### LONG WAYS AROUND IN SCOTLAND.

Scotland possesses several other railway anomalies, of which probably the most notable is that of the stations of Mallaig and Kyle, of Loch-shaish, which, though only twenty

miles apart in a straight line, are separated by no less than 360 miles of rail by the shortest route, viz., Crianich, Balquhitter, Perth and Inverness. Yet another Scotch incongruity is that the nearest railway station to the town of Port Ellen, on the island of Islay, if we except the small local line at Campbeltown, is Ballycastle, in Ireland.—London Globe.

## RADNOR

"THE WATER OF THE EMPIRE."

Endorsed by Royalty.



THE RADNOR WATER COMPANY

HAVE BEEN APPOINTED

BY

SPECIAL WARRANT

PURVEYORS TO

His Royal Highness The Prince of Wales



### PAGE WHITE FENCES

Get the Best. Styles for Lawns, Farms and Ranches. Made of high carbon wire, galvanized and then painted white. Tougher and stronger wire than goes into any other fence. Get 1908 price and illustrated booklet.

THE PAGE WIRE FENCE CO., LIMITED  
Largest fence and gate manufacturers in Canada.  
WALKERVILLE TORONTO MONTREAL ST. JOHN WINNIPEG

## Bass' Barley Wine

A Malt Extract that Does Nourish.



For actual nutritive value there's no malt extract sold to-day that can begin to compare with Bass' Barley Wine.

There are two features alone that make this preparation unlike all others.

One of them is that it is brewed at Burton-on-Trent in England by Bass & Co. the greatest brewers in the world.

Ever since barley has been malted, this locality has produced the finest water for malting and brewing purposes yet discovered.

The other feature is that the barley used for malting is known as the Chevalier brand.

This barley is richer in nutritive principles than any other and when malted, contains more grape sugar and proteids.

These proteids in the malting are converted into peptones and parapeptones.

In other words when you use Bass' Barley Wine it means that you are using a partly digested preparation full of nutritive principles.

This is why barley malt is so easily assimilated by anyone in delicate health.

It is particularly suitable for nursing mothers, invalids, nervous patients, delicate and tubercular

persons and others.

Unlike most of the malt extracts, Bass' Barley Wine has a body and flavor which makes it especially palatable to persons with delicate stomachs.

The fact that it's the best product of Bass & Co., is its strongest recommendation.

Insist upon getting Bass' Barley Wine — other Malt Extracts are "not as good".

Bass' Barley Wine costs 30c a bottle but contains more nourishment than any other three bottles of Malt Extracts sold to-day.

If your druggist hasn't got it, write us.

S. B. Townsend & Co. - Montreal

Sole Agents for Canada.

No. 301

### Health—The Foundation of Success . . .

Disorders resulting from a sedentary life positively cured by my Remedial Physical Culture, by correspondence. Write for particulars. PROF. G. A. PALMER, Physical Director, Queen's University, Kingston, Ont.



Just a choice Old Port combined with some of Nature's best recuperative tonics.

**Byrrh Wine Tonic**  
Benefits old and young. On sale everywhere.



THE MOST NORTHERLY CHAMPIONSHIP CURLING RINK IN THE WORLD—Winners of the "Unsworth Cup" for the season of 1907-08. The men composing this rink are residents of Whitehorse, in the Yukon Territory, and their names, reading from left to right, are as follows:—Standing: Walter Hamilton, second; G. O. Hall, lead. Sitting: W. A. McKeown, third; H. G. Dickson, D.L.S., skip. (Photographed for The Standard and just received from the Far North.)



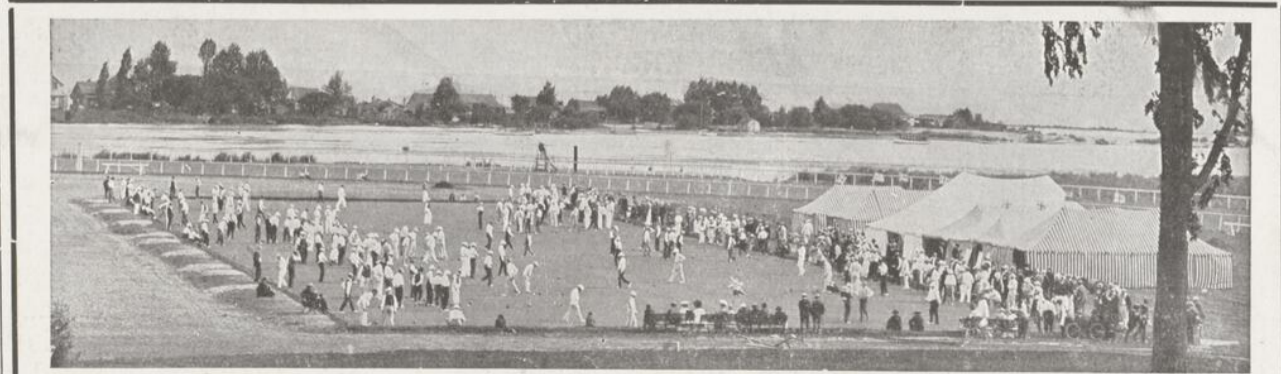
### THE RUSSELL ON THE SHEEP TREK.

Here are two Russell cars in far-off Australia. The adoption of the Russell by Canadian ranchmen has been followed up by a number of Australian wool growers, who have found the pioneer Canadian car, owing to its ample clearance, to be strictly a "service" automobile. The illustration herewith shows the well worn sheep trek through one of the world famed kangaroo bushes.



THE ORIGINAL AND ONLY GENUINE

Beware of Imitations Sold on the Merits of MINARD'S LINIMENT



### The Largest Bowling Lawn in the World.

The Dominion Bowling Lawn at Woodbine Park, Toronto, is the largest in the world, comprising thirty-two greens and accommodating 256 players at one time. Not a particle of sod was used in building it: RENNIE'S "EVERGREEN" LAWN GRASS SEED was sown on the virgin soil, and, 35 days after, the lawnmowers were kept busy. On August 16th last, the Dominion Bowling Tournament was held on this now world-famous lawn, yet, but a few weeks before, not a vestige of grass was to be seen on the site. RENNIE'S "EVERGREEN" LAWN GRASS SEED will make a lawn where all other seeds fail. Price: 30c per pound.

"RENNIE'S SELECTION" SWEET PEA MIXTURE.—A special mixture of all the largest and newest varieties. Nothing finer can be had. 1/4-lb. . . . 25c

'Phone Orders delivered same day. 'Phone, Main 2392.

WM. RENNIE CO., Limited, = = 190 McGill Street, MONTREAL

# MILK DIRECT FROM THE COW TO THE CONSUMER

**M**ORNING'S milk direct from the farm to consumer is a special line of catering done by Mr. James N. Drummond, of Rosemount. This is valuable news for the home, inasmuch as the greater part of the milk supply of Montreal is from 24 to 72 hours old before delivery, though Mrs. Housekeeper has, in most cases, believed in the milkman's tale of "Drawn this morning, Ma'am."

Mr. Drummond is one of those men who, apart from the commercial aspect of the thing, takes an unusual interest in their business and show a care which is unhappily not too frequently met with in milk

production and trading, or, for that matter, in other branches of dealing. He is President of the Milkmen's Association, and has won a number of silver cups and other trophies in connection with the equipment of his farm at Rosemount, the methods with which it is handled, and the quality of his output. For several years he supplied the Pure Milk League of this city, a testimony in itself of the excellence of the milk from his establishment.

Situated on one of the highest elevations of the Island of Montreal, Rosemount Farm has, to begin with, a healthful situation and unsurpassed drainage facilities. Then the stables



Trophies won for cleanliness and efficiency on Dairy Farm of Mr. James N. Drummond.

stables and their management. Coming from a particularly healthy breed of cattle, the milk, drawn under the best conditions, is taken to the dairy some distance away, and there aerated and cooled down to a temperature of 40 degrees Fahrenheit.

Bottles, which have previously been sterilized, are then filled with milk through a bottling machine which contains strainers, and are then sealed up with a pulpwood cap. They are then ready for delivery and are placed in specially constructed waggons which convey them over the short run to the city.

The cattle are fed on the best pure grain provender and bran, and on home

grown hay. No brewers' grains are given. Salt is supplied daily. A veterinary surgeon makes regular visits to ascertain that the herd is in healthy condition.

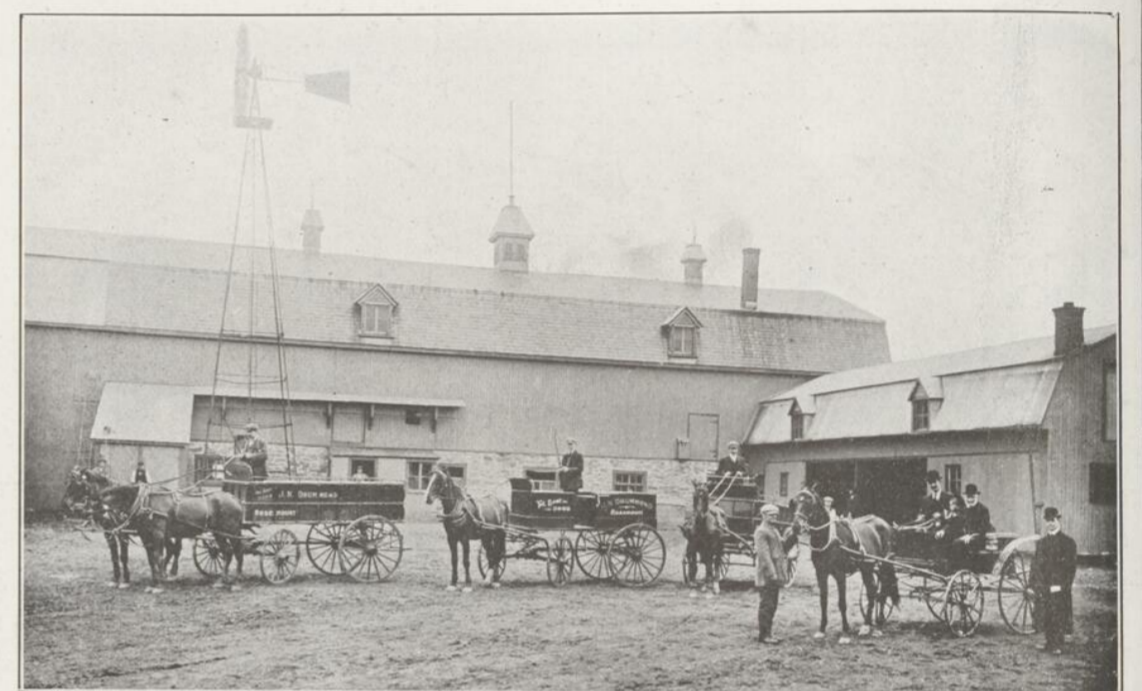
Sanitary dairy pails are used for milking, and other details of processes are cared for in as commendable fashion.

Mr. Drummond's father, the late Mr. James Drummond, of Petite Cote, was long known as one of the leading farmers in the Province. In 1890 the present Mr. James N. Drummond entered into the business of his father, and since 1897 has conducted it entirely on his own account, with a considerable measure of success.

and other structures in connection with the business are modelled on plans most approved by agricultural and other experts in relation to their effect on the quality of the milk taken from the cows therein housed and fed. All floors are of cement. There is plenty of room, light and ventilation. Water continually passes through the troughs in front of the cattle, and is originally drawn from an artesian well sunk 250 feet in solid rock. Strict cleanliness in all particulars is the feature of the



Residence on Dairy Farm of Mr. James N. Drummond.



Delivery Waggons and Outbuildings on Dairy Farm of Mr. James N. Drummond.



IN THE THEATRICAL WORLD—Madame Nazimova, the distinguished Russian actress, who will be seen at His Majesty's Theatre next week in "A Doll's House," "Hedda Gabler," "Comtesse Coquette," and "The Comet." This is Madame Nazimova's first appearance in Montreal.

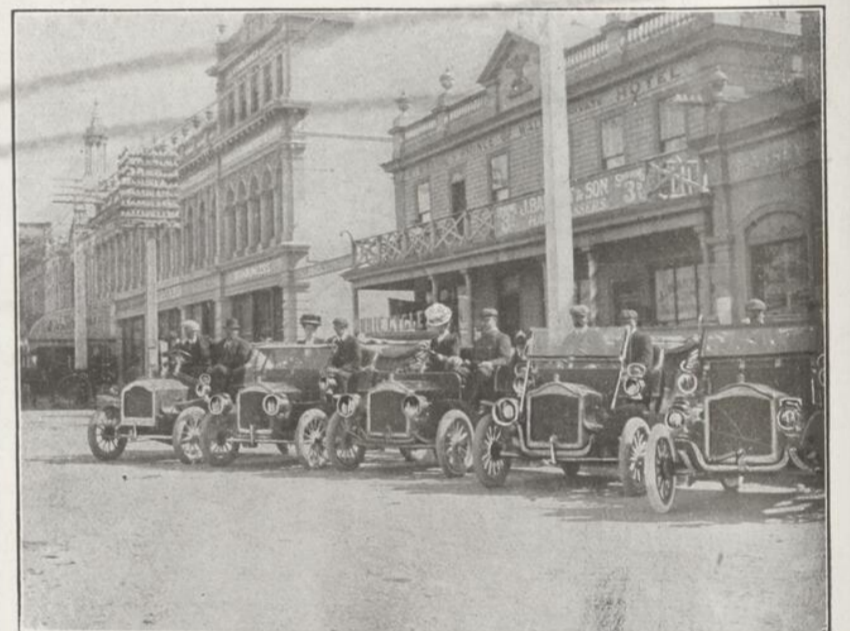
The first almanac was printed by George Von Furbach in 1460. The first printing press in the United States was introduced in 1629.



IN THE AMUSEMENT WORLD—The Bell Sisters, Scotch dancers, who will take part in the Empire Day Concert to be given in the Arena on Friday evening, May 22nd, under the auspices of the Caledonian Society of Montreal.



IN THE THEATRICAL WORLD—Signor Gennaro, with the Venetian Gondoliers' Band at Bennett's Theatre next week.



A RUSSELL LINE-UP.

This is Main Street, Invercargill, New Zealand—the farthest point south in that island ever reached by an automobile. In the picture are five Russell motor cars in military line-up. The Canada Cycle & Motor Co., Ltd., Toronto Junction, are to be congratulated on the world-wide growth of their industry—the making of Russell cars.

## COLGATE'S TALC POWDER



### Start the Baby Right

THIS healing and soothing Powder is prepared from the formula of an eminent physician in charge of a baby hospital.

ITS antiseptic and medicinal ingredients wonderfully adapt it for the Toilet. Best for babies, mothers know!

FOR chafing, chapped hands, excessive perspiration, cuts and bruises, and after shaving or bathing it is unequalled.

Full size packages sent for 25 cts each, if not obtainable locally.

Note this offer

Trial packages of both our Talc Powder and vegetable-oil soap Coleo, sent for 10 cts. (stamps) Colgate & Co., Dept. G, Coristine B'd'g, Montreal.

Oldest makers of fine Soaps and Perfumes in America (Established 1806). Largest in the World.



12 BLADES 24 SHARP EDGES

### The Wonder of It.

Can you conceive of a razor blade only 6-1000 of an inch thick! Think of this blade being so flexible that it may be bent in the fingers and yet do better work than the ordinary thick blade. A handle and blade so perfect in a practical way that shaving is made a *delight* to the novice or the experienced, old method, "self shaver." When you think of these features in one razor, you marvel at the wonders of the "Gillette."

The GILLETTE Safety Razor consists of a Triple Plated Holder (will last a lifetime)—12 double edged flexible blades (24 keen edges)—packed in a velvet lined leather case—and the price is \$5.00. All the leading Jewelry, Drug, Cutlery, Hardware, Sporting Goods and Department Stores carry them. Write or ask your dealer for free booklets. If he cannot supply you, write us.

GILLETTE SAFETY RAZOR CO. Canadian Factory, MONTREAL.

**Gillette Safety Razor**  
NO STROPPING NO HONING

### Ideal Lawn Fence

The neatest and most serviceable lawn fence made. Manufactured from stiff, heavy steel wire, heavily galvanized. Better than wood or iron fences—cheaper than either. Easily erected. Write for particulars.

THE MCGREGOR BANWELL FENCE CO., LIMITED  
Dept. F.,  
Walkerville, Ontario.

