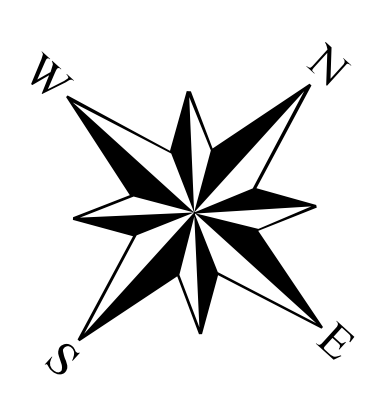


- Limites municipales
- Hydrographie
- Zone non agricole
- Exclusion
- Inclusion
- Article 59**
- Secteur type 1 (30 ha et plus)
- Secteur type 2 (20 ha et plus)
- Secteur type 3 (10 ha et plus)
- Secteur type 4 (5 ha et plus)
- autres affectations non visées
- lots déstructurés

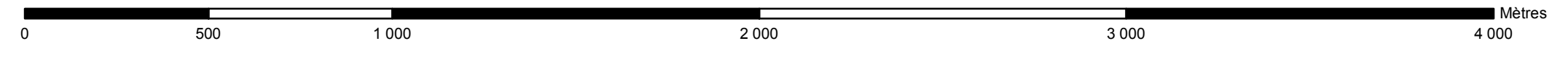
# Article 59

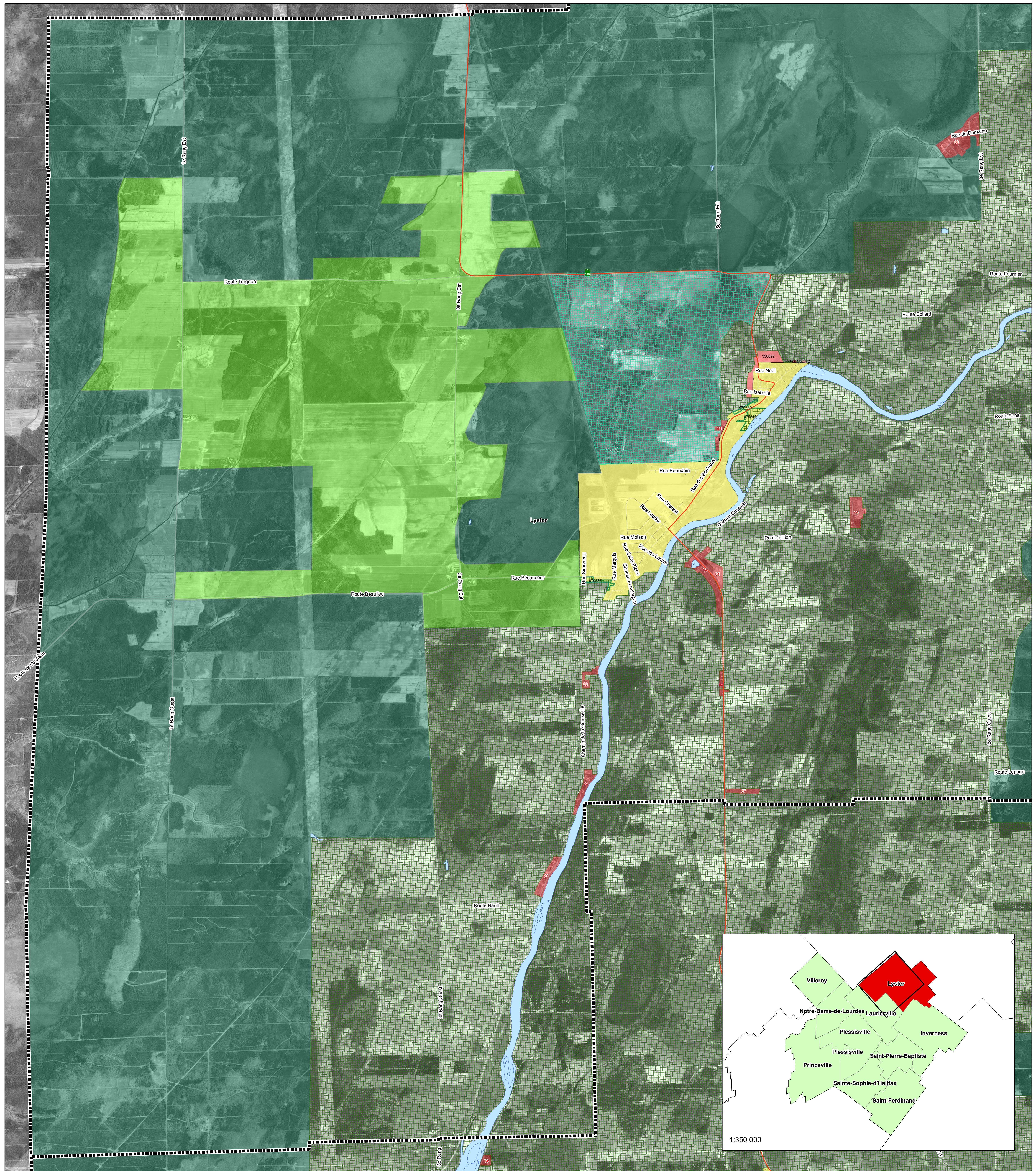
## MRC de L'Érable

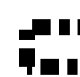







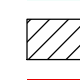


### Municipalité de Laurierville



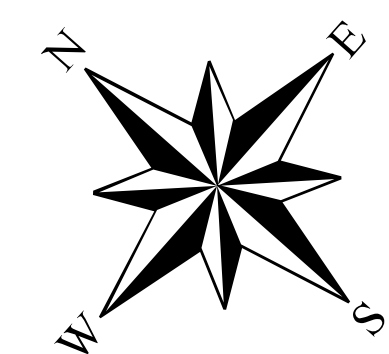
1:15 000



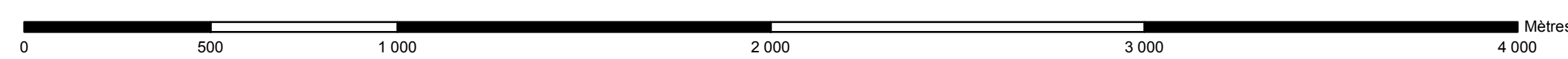


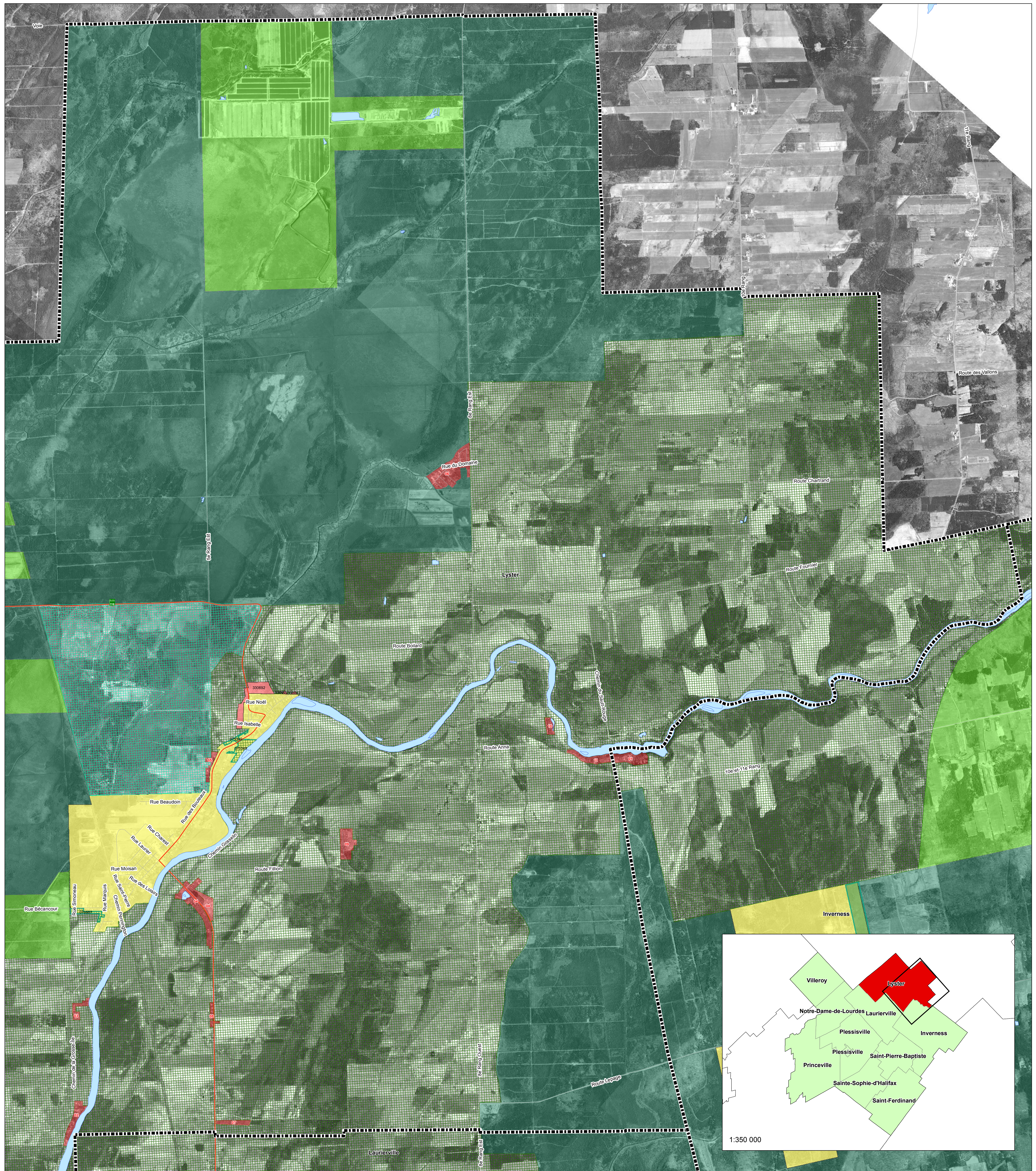
-  Limites municipales
-  Hydrographie
-  Exclusion
-  Inclusion
-  Zone non agricole
- Article 59**
-  Secteur type 1 (30 ha et plus)
-  Secteur type 2 (20 ha et plus)
-  Secteur type 3 (10 ha et plus)
-  Secteur type 4 (5 ha et plus)
-  autres affectations non visées
-  îlots déstructurés

**Article 59**  
**MRC de L'Érable**  
**Municipalité de Lyster**  
**1 de 2**



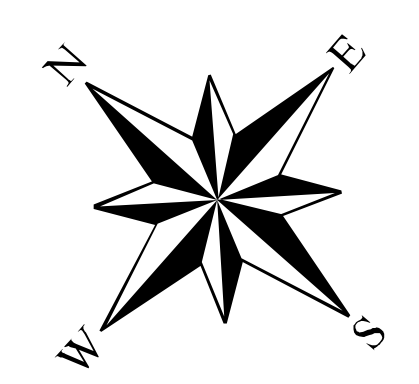
1:15 000



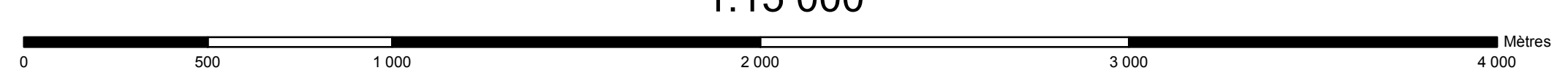


- Hydrographie
- Zone non agricole
- Exclusion
- Inclusion
- Article 59**
- Secteur type 1 (30 ha et plus)
- Secteur type 2 (20 ha et plus)
- Secteur type 3 (10 ha et plus)
- Secteur type 4 (5 ha et plus)
- autres affectations non visées
- îlots déstructurés

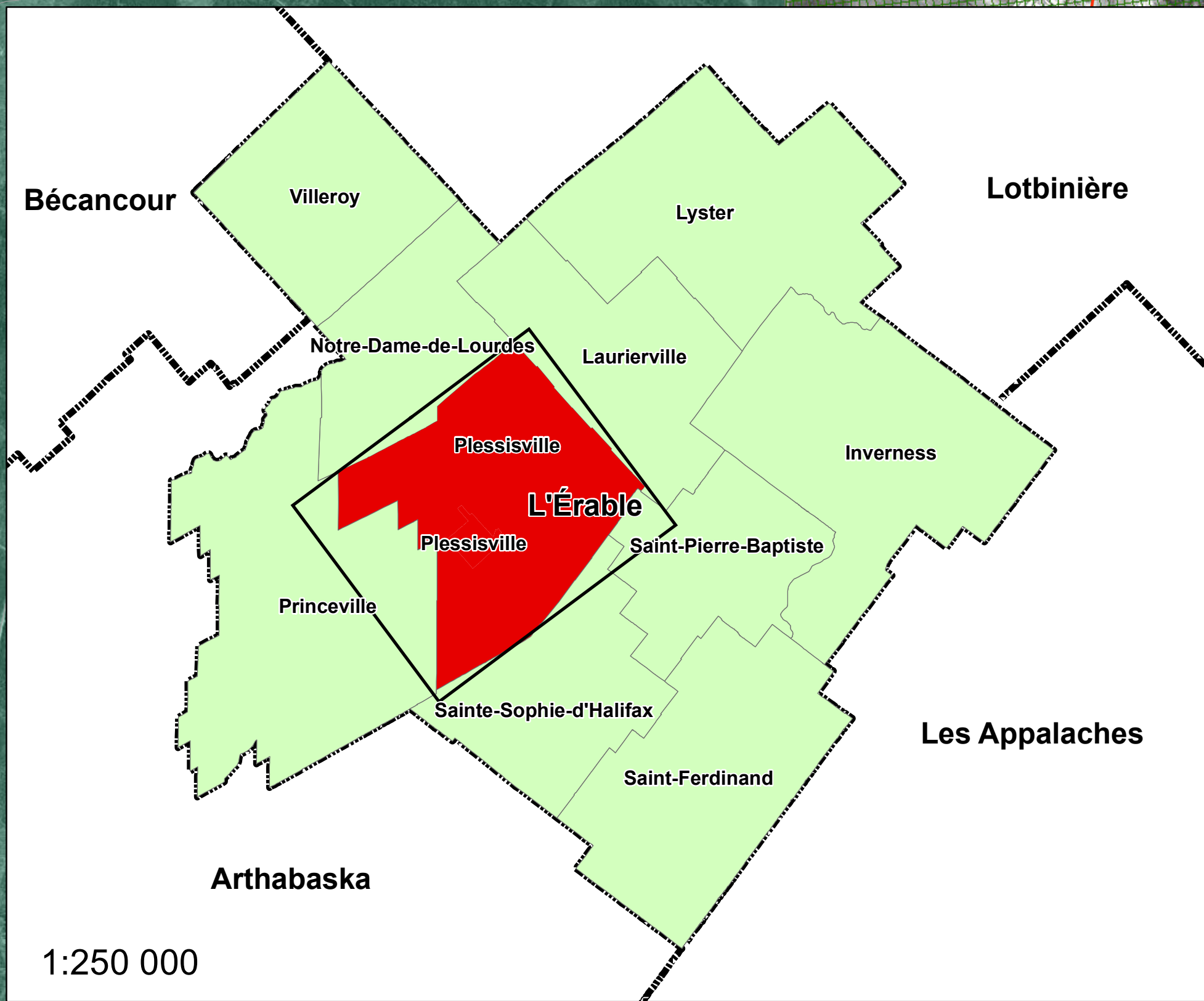
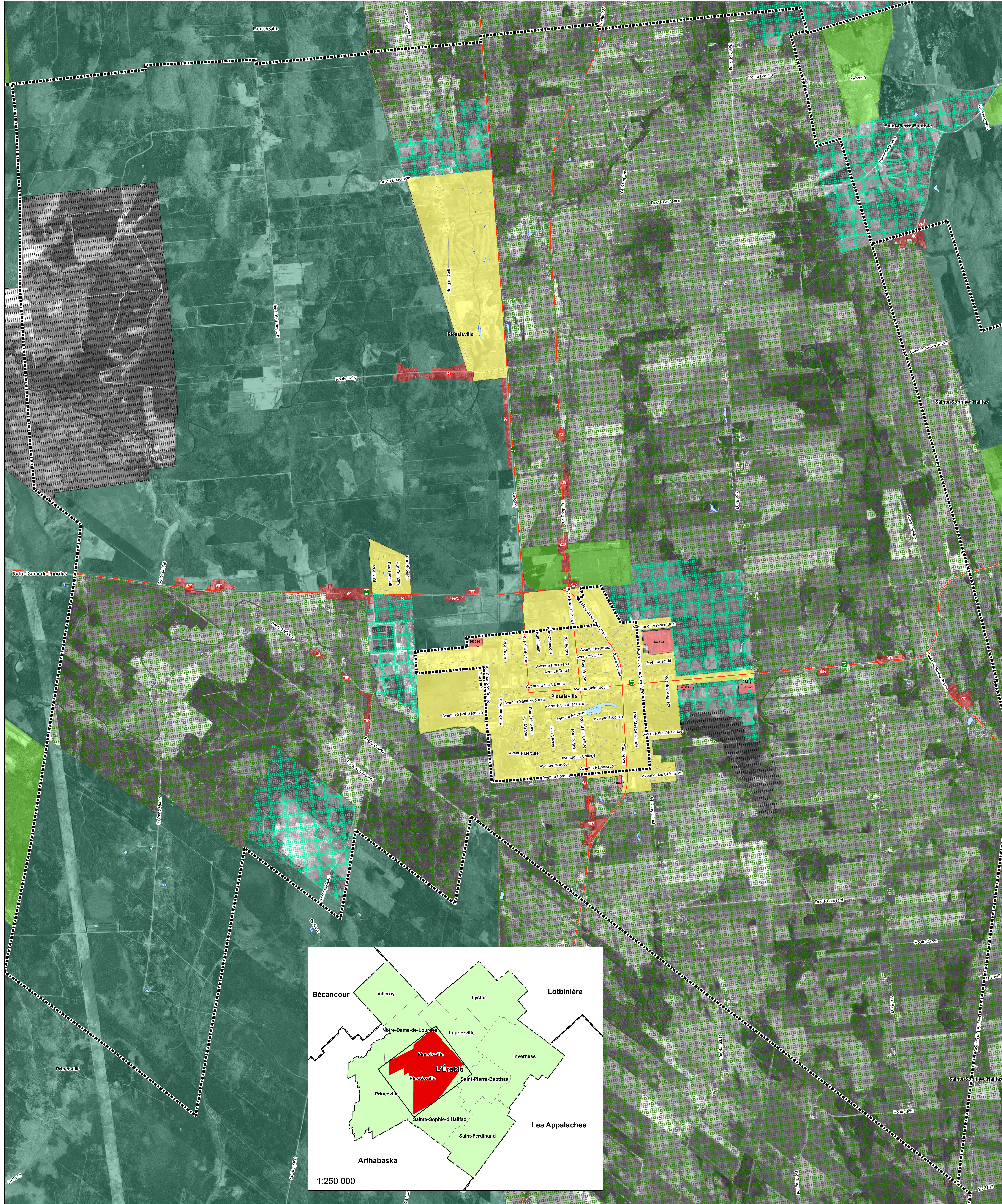
**Article 59**  
**MRC de L'Érable**  
**Municipalité de Lyster**  
**2 de 2**



1:15 000

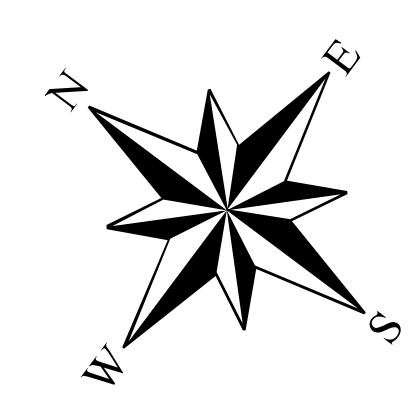




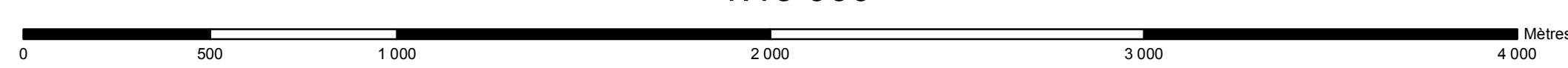


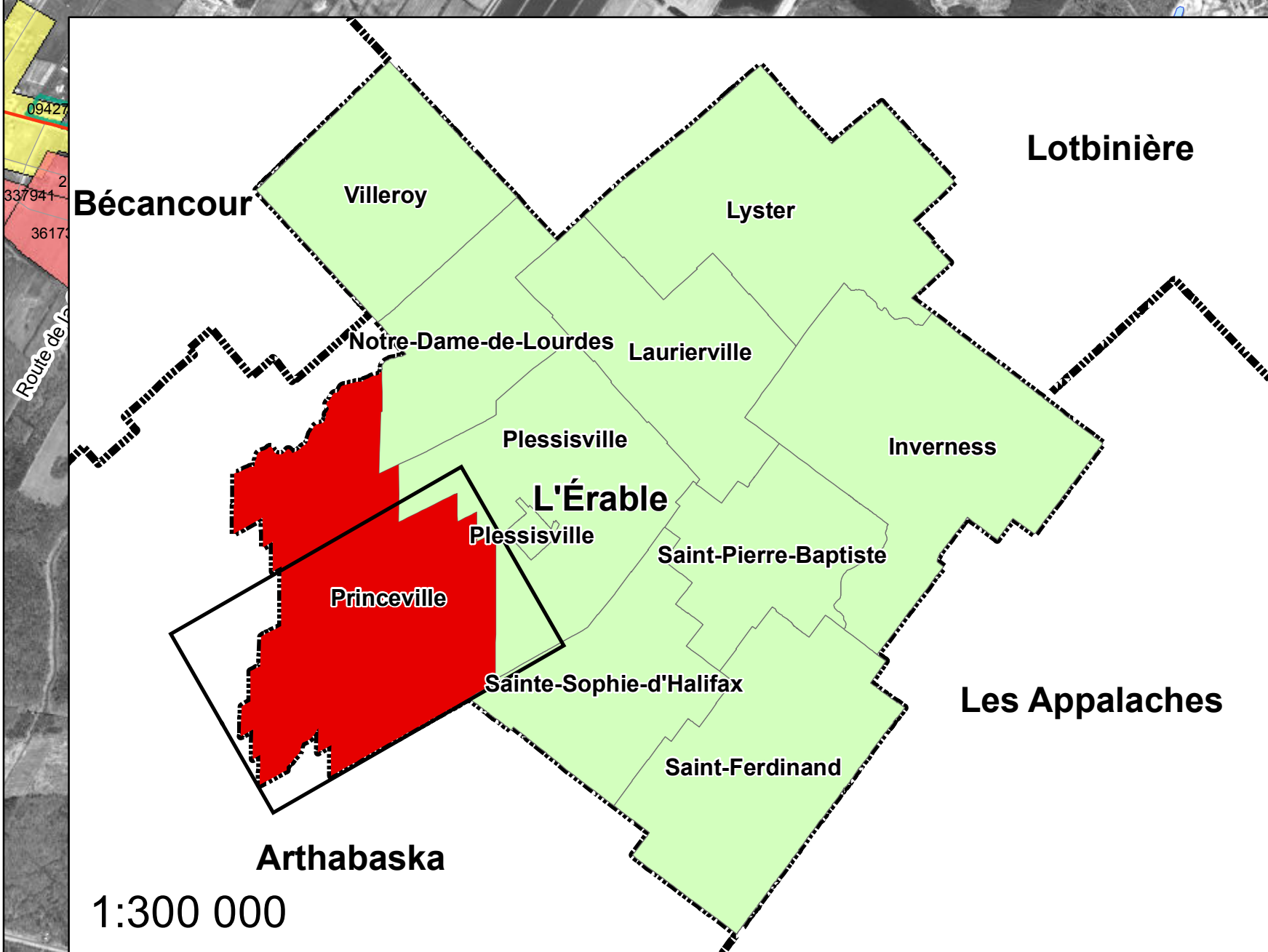
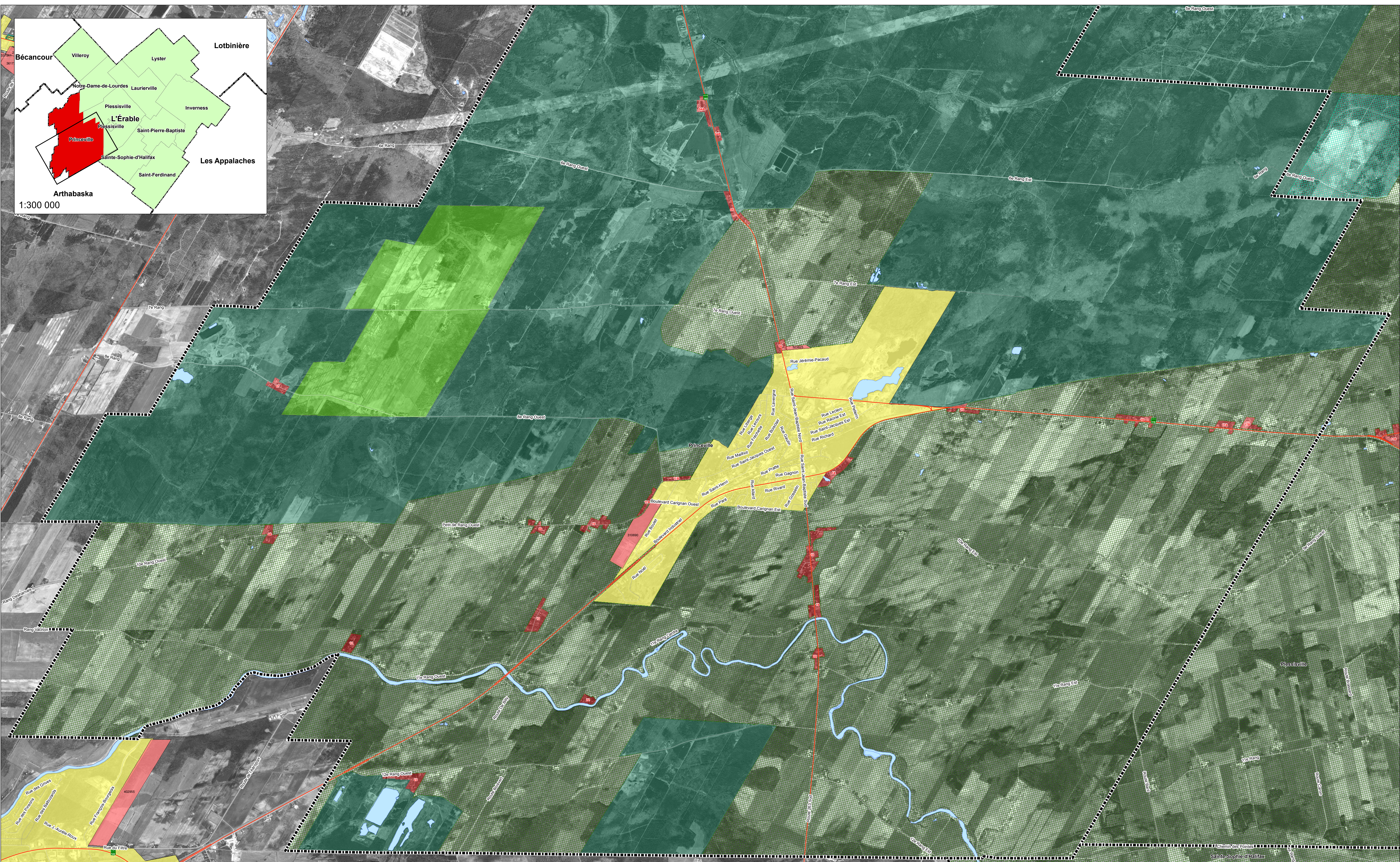
- Limites municipales
- Hydrographie
- Zone non agricole
- Exclusion
- Inclusion
- Article 59**
- Secteur type 1 (30 ha et plus)
- Secteur type 2 (20 ha et plus)
- Secteur type 3 (10 ha et plus)
- Secteur type 4 (5 ha et plus)
- autres affectations non visées
- lots déstructurés

**Article 59**  
**MRC de L'Érable**  
**Paroisse et ville de Plessisville**

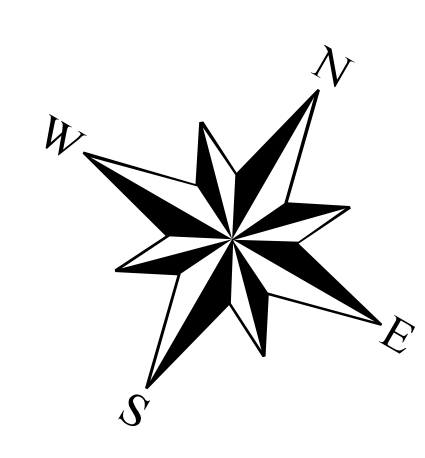


1:15 000





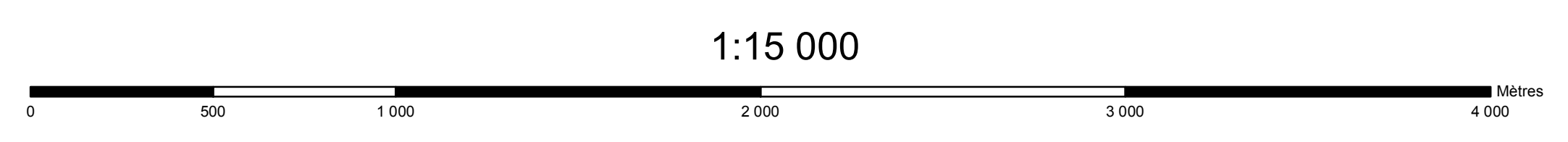
- Limites municipales
  - Hydrographie
  - Exclusion
  - Inclusion
  - Zone non agricole
  - Article 59**
  - Secteur type 1 (30 ha et plus)
  - Secteur type 2 (20 ha et plus)
  - Secteur type 3 (10 ha et plus)
  - Secteur type 4 (5 ha et plus)
  - autres affectations non visées
  - lots déstructurés
- Date: avril, 2016



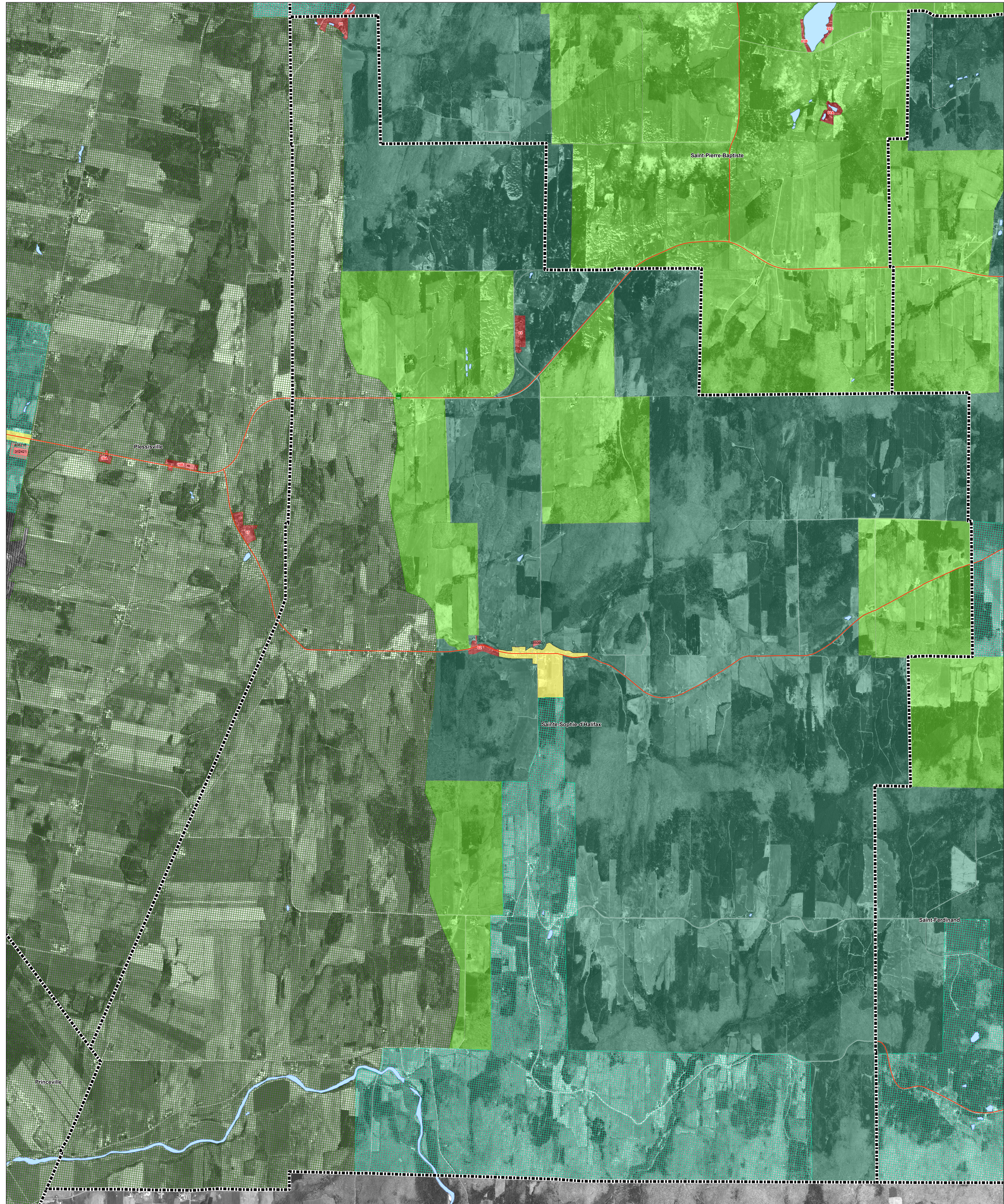
## Article 59 - MRC de L'Érable



### Ville de Princeville

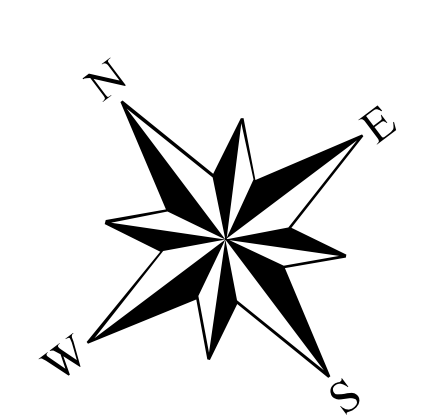
1 de 2







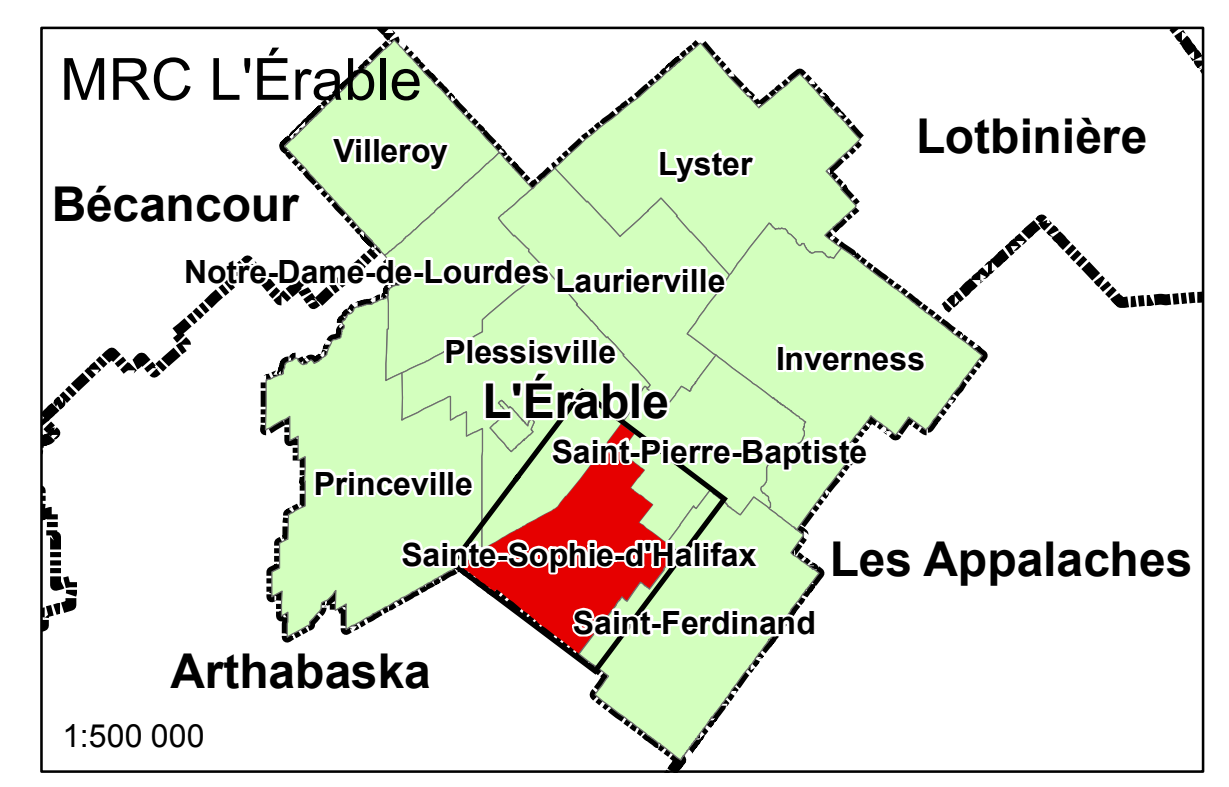
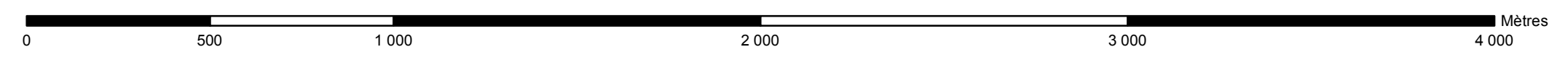
-  Limites municipales
-  Hydrographie
-  Exclusion
-  Inclusion
-  Zone non agricole
- Article 59**
-  Secteur type 1 (30 ha et plus)
-  Secteur type 2 (20 ha et plus)
-  Secteur type 3 (10 ha et plus)
-  Secteur type 4 (5 ha et plus)
-  autres affectations non visées
-  îlots déstructurés

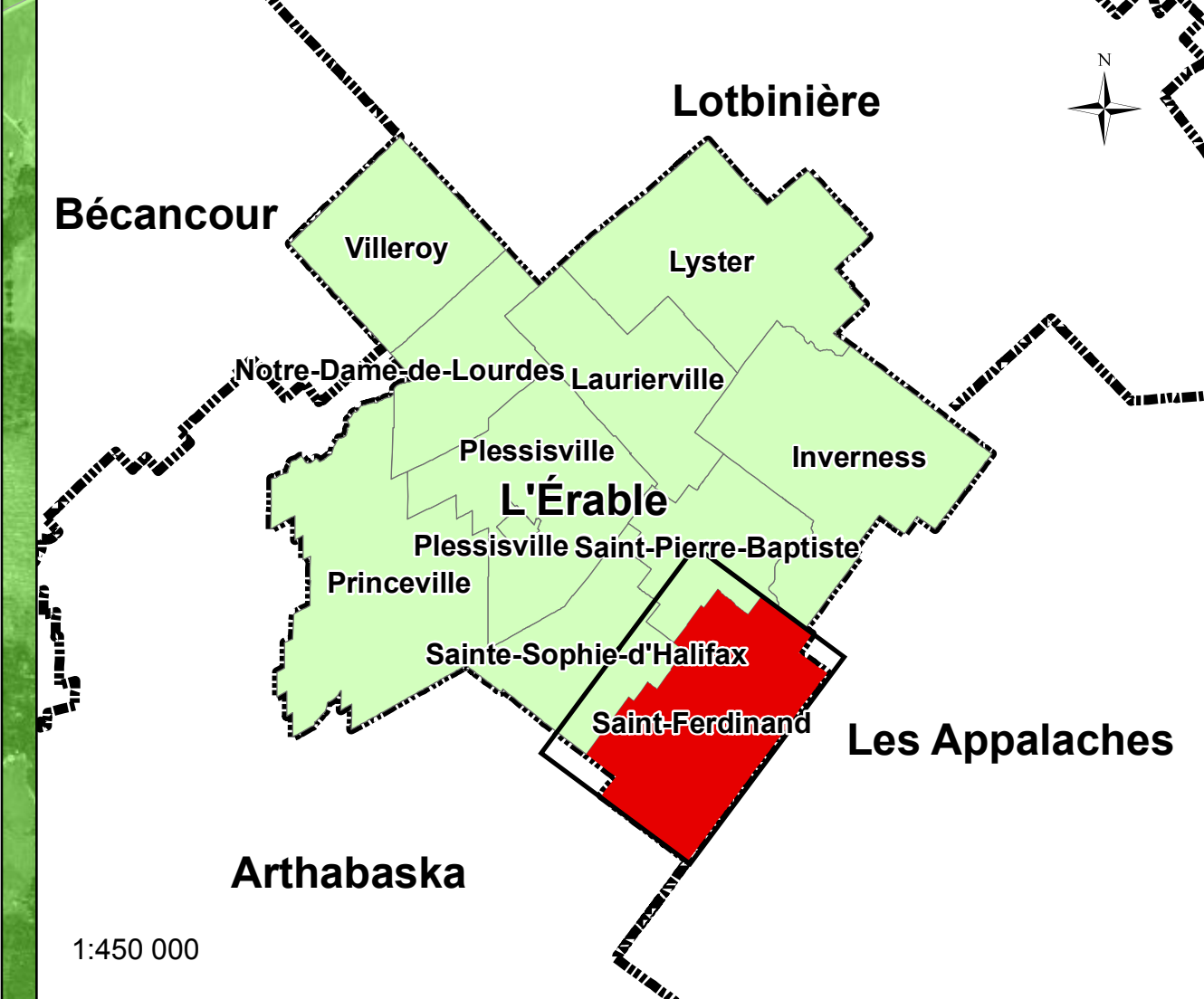
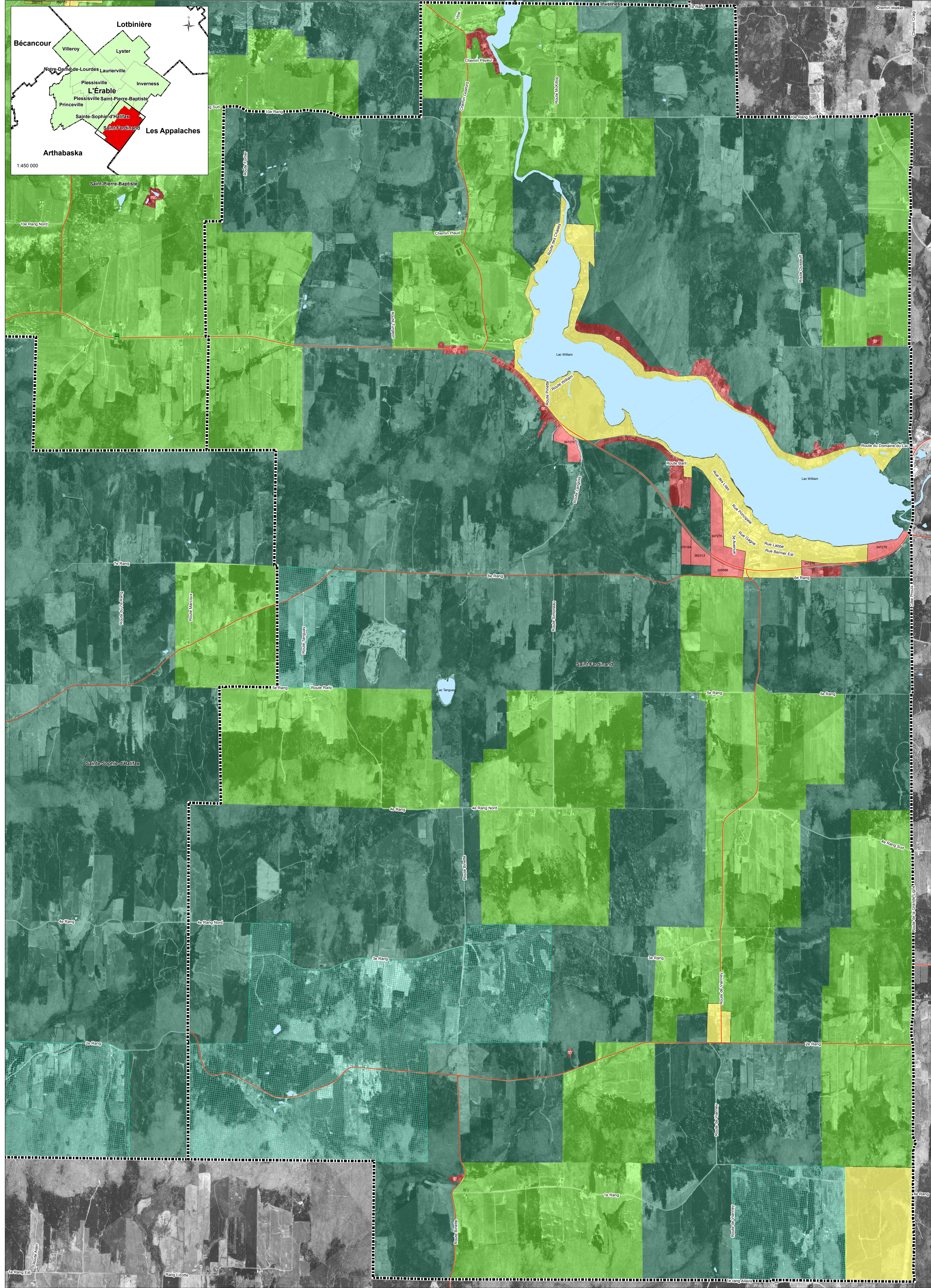


## Article 59 - MRC de L'Érable

### Municipalité de Sainte-Sophie-d'Halifax

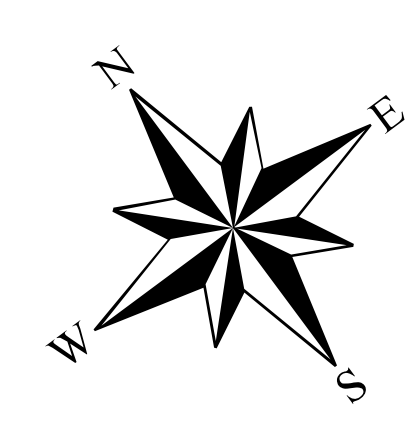
1:15 000



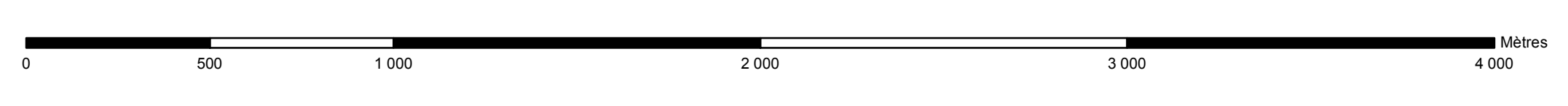


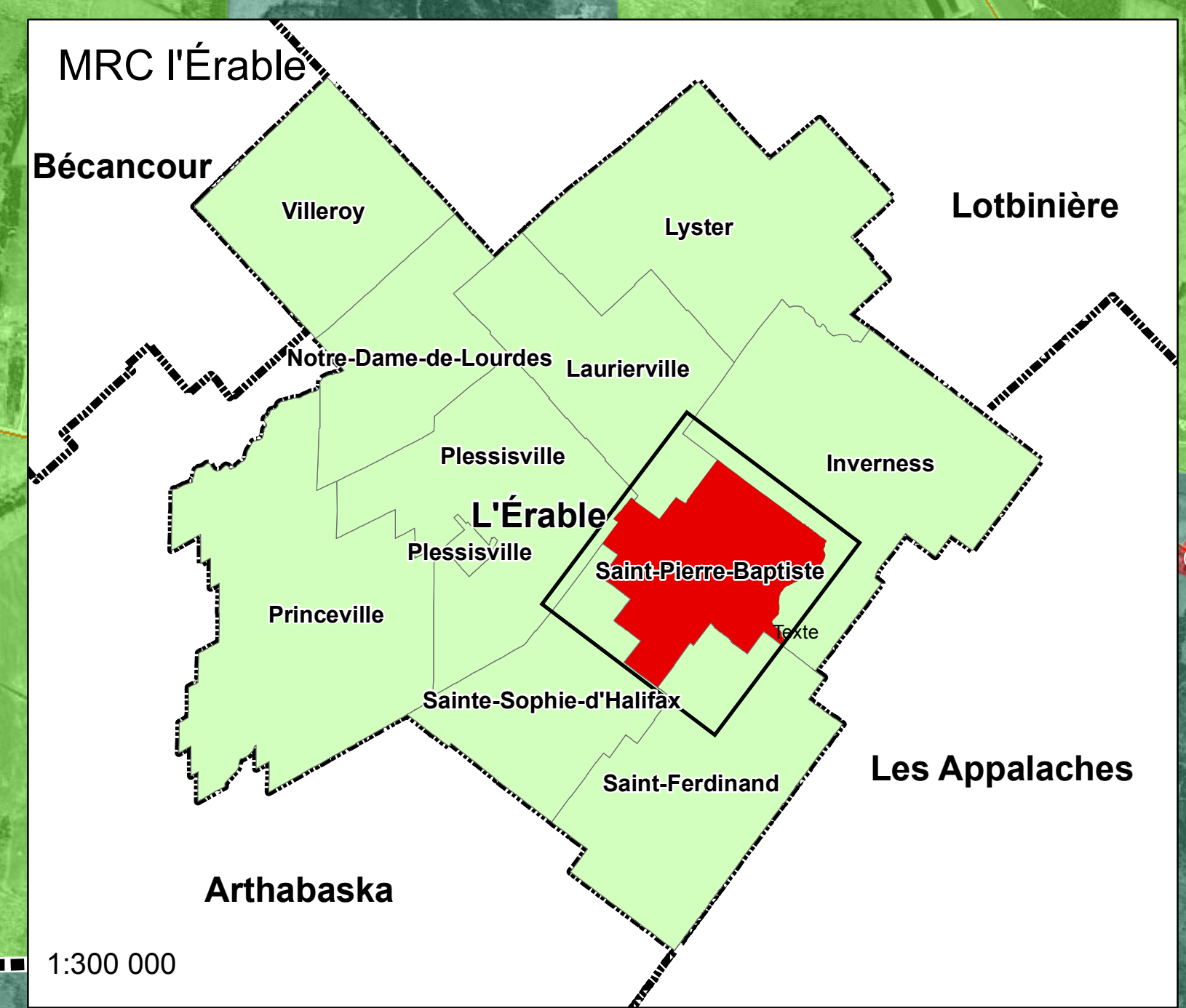
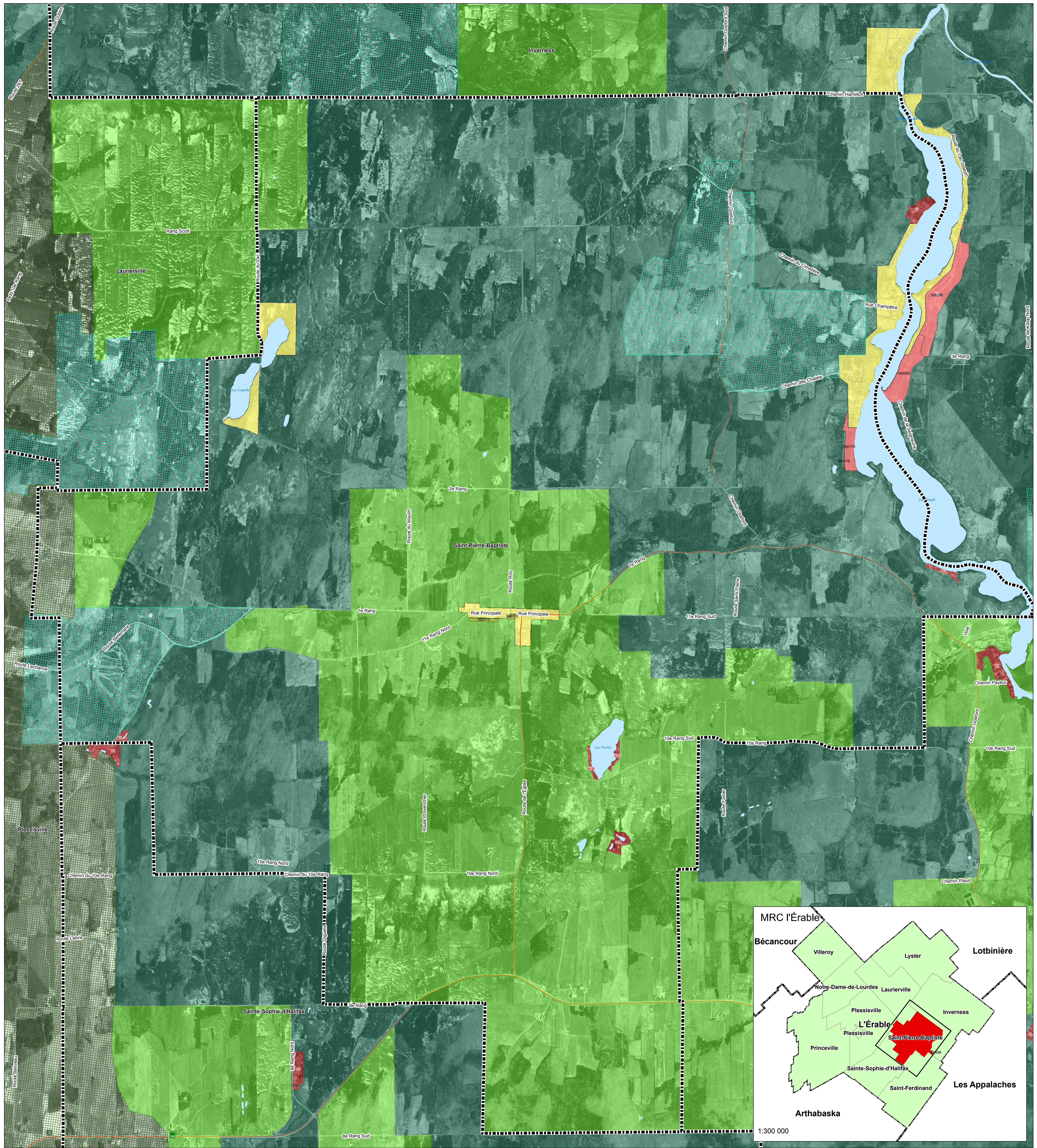
## Article 59 - MRC de L'Érable Municipalité de Saint-Ferdinand

- Limites municipales
- Hydrographie
- Exclusion
- Inclusion
- Zone non agricole
- Article 59**
- Secteur type 1 (30 ha et plus)
- Secteur type 2 (20 ha et plus)
- Secteur type 3 (10 ha et plus)
- Secteur type 4 (5 ha et plus)
- autres affectations non visées
- lots détruits



1:15 000



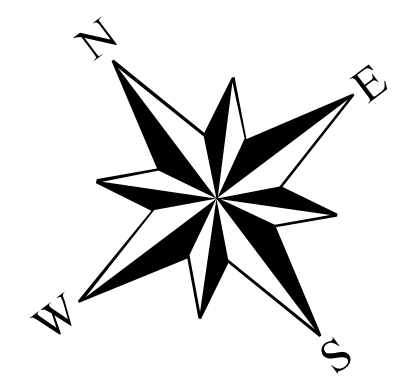


- Hydrographie
- Zone non agricole
- Exclusion
- Inclusion
- Limites municipales
- Article 59**
- Secteur type 1 (30 ha et plus)
- Secteur type 2 (20 ha et plus)
- Secteur type 3 (10 ha et plus)
- Secteur type 4 (5 ha et plus)
- autres affectations non visées
- îlots déstructurés

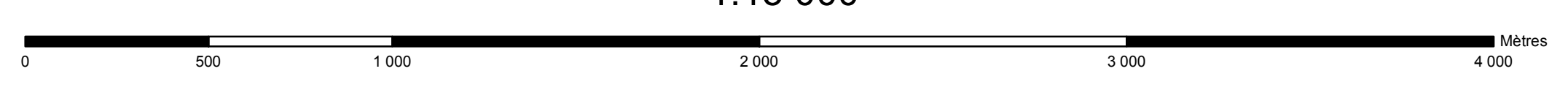
# Article 59

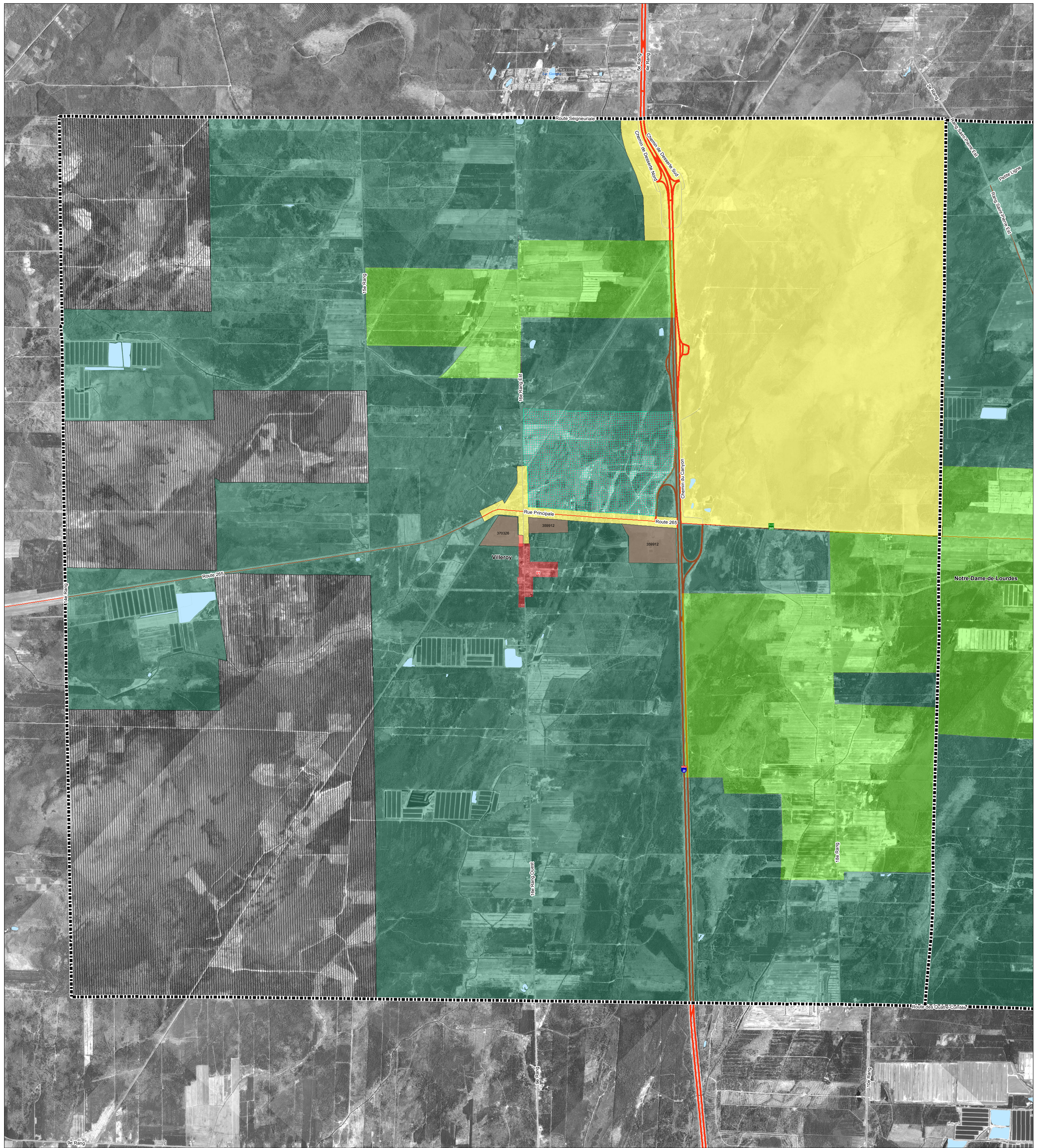
## MRC de L'Érable








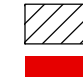


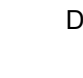
### Paroisse de Saint-Pierre-Baptiste

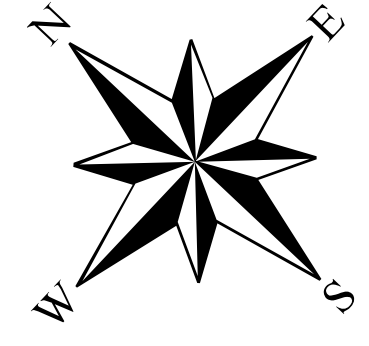


1:15 000





-  Limites municipales
-  Hydrographie
-  Exclusion
-  Inclusion
-  Zone non agricole
- Article 59**
-  Secteur type 1 (30 ha et plus)
-  Secteur type 2 (20 ha et plus)
-  Secteur type 3 (10 ha et plus)
-  Secteur type 4 (5 ha et plus)
-  autres affectations non visées
-  îlots déstructurés



# Article 59

## MRC de L'Érable

### Municipalité de Villeroy

1:15 000

