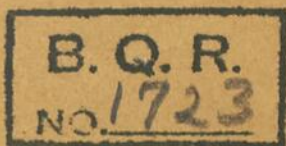


INDIAN CHILDREN'S ALPHABET  
SPELLING BOOK

PM

232

A5 [5]



CIRCA (MONTREAL 1860?)

# ANICHINABE

## AKINOAMADI-MISINAIGANS.

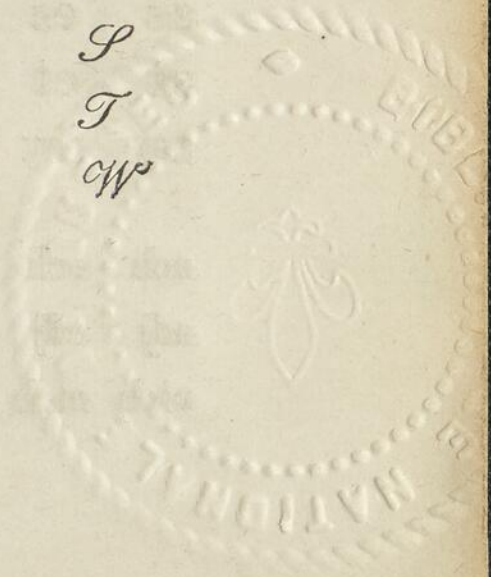
---

a  
b  
d  
e  
g  
i  
j  
k  
m  
n  
o  
p  
s  
t  
w  
ch  
sh  
tch

*a*  
*b*  
*d*  
*e*  
*g*  
*i*  
*j*  
*k*  
*m*  
*n*  
*o*  
*p*  
*s*  
*t*  
*w*  
*ch*  
*sh*  
*tch*

A  
B  
D  
E  
G  
I  
J  
K  
M  
N  
O  
P  
S  
T  
W

*A*  
*B*  
*D*  
*E*  
*G*  
*I*  
*J*  
*K*  
*M*  
*N*  
*O*  
*P*  
*S*  
*T*  
*W*



*Agindassowinan.*

1, 2, 3, 4, 5, 6, 7, 8, 9, 10, 11, 12, 13,  
 14, 15, 16, 17, 18, 19, 20, 21, 22, 23 ;  
 30, 31; 40, 50, 60, 70, 80, 90, 100 ;  
 101, 102, 110 ; 200, 300 ; 1000, 2000.

---

|    |    |    |    |    |    |    |    |
|----|----|----|----|----|----|----|----|
| ab | eb | ib | ob | ba | be | bi | bo |
| ad | ed | id | od | da | de | di | do |
| ag | eg | ig | og | ga | ge | gi | go |
| aj | ej | ij | oj | ja | je | ji | jo |
| ak | ek | ik | ok | ka | ke | ki | ko |

---

|    |    |    |    |    |    |    |    |
|----|----|----|----|----|----|----|----|
| am | em | im | om | ma | me | mi | mo |
| an | en | in | on | na | ne | ni | no |
| ap | ep | ip | op | pa | pe | pi | po |
| as | es | is | os | sa | se | si | so |
| at | et | it | ot | ta | te | ti | to |
| aw | ew | iw | ow | wa | we | wi | wo |

---

|      |      |      |      |      |      |      |      |
|------|------|------|------|------|------|------|------|
| ach  | ech  | ich  | och  | cha  | che  | chi  | cho  |
| adj  | edj  | idj  | odj  | dja  | dje  | dji  | djo  |
| atch | etch | itch | otch | tcha | tche | tchi | tcho |

and, ant, ang, ans, bat, bad, bik, dam,  
 dan, deg, end, ent, ens, eng, enj, gem,  
 get, gej, ged, gen, gij, gig, ins, ing, ind,  
 inj, jan, jad, jab, jam, jaw, jeb, jin, jid,  
 jib, jig, jim.

---

kin, kig, kid, kod, kad, kwa, kon, mat,  
 mod, mok, non, nij, nok, nan, ond, ong,  
 pak, pag, pin, pit, son, sig, sis, sod, ton,  
 tag, tak, tin, wag, wak, waj, wam, wan,  
 was, win, wid, wed, weg.

---

kob, gag, mog, bon, bis, nin, bak, nim,  
 jag, dad, bwa, dig, gak, beg, gaj, bej,  
 ban, gon, gan, daw, gan, kan, mam,  
 mas, das, bid, dib, pid, mig, pig, dog,  
 biw, big, nig, nib, wen, mad, mak,  
 min, god, gog, gok, wad.

---

gans, bach, gong, chid, andj, gang,  
 djig, gich, goch, wang, nind, wing, bans,  
 djan, djin, sing, song, ging, kwen,

mind, jond, ning, pind, jing, dind,  
king, djiw, mans, kidj, koch.

---

chag, nang, nong, wadj, nodj, dong,  
wich, bins, widj, gech, gwad, gwak,  
kwad, nond, dach, wenj, gach, gech,  
wadj, nidj, bing, iang, kwag, gwag,  
bens, mang, kich, bwed, pweg, wind,  
sind, gwen, teng, bang, bong.

---

gwach, watch, gwiss, pindj, patch,  
tchag, match, tchim, witch, natch,  
tchib, batch, tchin, swang, ching,  
djing, djins, kwing, kwatch, tchitch.

---

ge go, bi san, be ka, i wa, e ta, as sin,  
e ko, be jig, a nind, das sing, a te, ba te,  
ma wi, bi bon, a chi, do dan, ge get,  
wa di, a wass, ba pi, e pitch, ki iaw,  
a king, ba pich.

---

ge ga, ke go, go cha, gi jig, go chi,  
ka wi, ma djan, ma tchi, ki ga, ki tchi,  
non go, mo jag, je ba, wa bang, am be,

ki gwiss, nin got, ki niw, mi tig, i ji,  
 on dass, mis kwi, i jan, ni jing,  
 nin gwiss, o dji, a mo, ji wan.

---

ben gwan, niss wi, si bi, sig wan, ga ie,  
 gwa iak, son gan, ga iat, ni bi,  
 mech kwat, gi go, mi no, ma no,  
 na nan, mi nan, ti bi, was sa, ni win,  
 nan dom, mig wetch, ni iaw, na nan,  
 on dji, o sam, wa bi, os san, pan gi,  
 tchi man, win sop, mem wetch, mi nik.

---

A mik, A ki, As sab, A wan, A nang,  
 Ba kan, Ba nak, Bi don, Bina, Bi wan,  
 Be cho, Dago, De bwe, De de, E nind,  
 Es sag, Ech kam, Gin wenj, Ga iachk,  
 Gi siss, Gijik, Ga nak, I wi, I ja, Jomin.

---

Ki nindj, Ki ja, Ma kwa, Mik wam,  
 Mi chi, Ma kak, Mi sai, Me me, Nos se,  
 Ni bin, No din, Nin de, Na ning, O pin,  
 O nik, O nindj, O gans, O don, O kan,

Pin dig, Si bing, Ti bik, Wi bid,  
Wig wass, Wa bos.

---

A bi ding, A ga ming, A na kan, A ni  
bich, A pa kwei, Bo ta gan, Bi bo nong,  
Ba gi chi, Bi ba gi, Bi to big, Be ba kan,  
Be be jig, De bwe win, Da gwi chin,  
Da ni si, Da ni win.

---

Es si ba, E mi kwan, E ni go, Gij we  
win, Gi ji gad, Gi gi to, Gi ji gong,  
Ga gi kwe, I ki to, I nen dam, In we  
win, Ja we nim, Ja ig wa, Jo ni ia,  
Ki na wa, Ki na wi, Ka ki na, Ka gi ni.

---

Ma in gan, Ma ma wi, Mi na wa, Ma  
na dad, Mis kwe gin, Ni bo win, Nos  
si na, Na bi kwan, Nis sa ki, Nij ta na,  
Nich wass wi, O gi ma, O pi nig, O mo  
dai, On dji ta, O nin djin, O si dan,  
Och kin jig, O de na.

---

Pa bi ge, Pe pan gi, Pa pa gwach,  
Pin di gen, Pi sin dan, Si gwa nong,

Si bi wan, Sa na gad, Se ni ba, Tchi  
 ma nan, Ti go wag, Tchi gi big, Ti  
 bich ko, Ti bi kad, Wi gi wam, We  
 we ni, Wa ban dan, Wa ba nong.

---

Ni bwa ka win. Ti ki na gan. Na ga  
 mo win, a gon we tam, de bwe ien dam.  
 De ben dji ged, e ji we bak. Ba ta do  
 win, ma ia na dak, ga na pi ne, a na  
 mi a, o ni ji chin. Do da mo win. An  
 je ni wag, wa ka i gan. Mi no de e,  
 pa gi den dan.

---

We bi ni ge win, bi ma di si win. Ga  
 ga no da maw, bi ni de e win. A ni  
 chi na be, ma ma ka den dam, wi di  
 gen di win, ba ba ma di si. Ja wen  
 dji ge win, ma si na i gan, ki ti ma gi  
 si. De be ni mi nang, o gi ma wi win,  
 ach ken da mo win. A bi tchi ba win,  
 jin ge nin di so, na nin go ti nong.

Ke ti ma gi si djig, a ia ko si ka sod,  
 ni ga na dji mo win. An we nin di  
 so win, wi do ka wi chi nam. Si ga  
 an da di win, ki tchit wa gi ji gad, ga  
 ga no ni di wag. Ba ta do wi nen san,  
 e na mi as si gog, i ji we bi si win, ki  
 ti ma gi si win. Ni ni dja nis si dig,  
 mi na wa ni gwen dam, ach ken da  
 mi de e.

---

Son gi de ech ka ge win, me ka te wi  
 kwa na ie, a na mi e wi ga mig, mi na  
 wa ni go si win. Diba ko ni ge gi ji gad,  
 ke tchi twa wen da go si djig, ma man  
 da do da mo wi nan. Na na ga ta  
 wen da mo wi nan, ni ga na dji mo  
 wi ni ni wag, was sa kwa nen da ma  
 wi chi nam. A ki no a ma di wi ga  
 mi gong. Bi gwa ka mi gi bi dji ga  
 ni ke wi ni ni wag.



