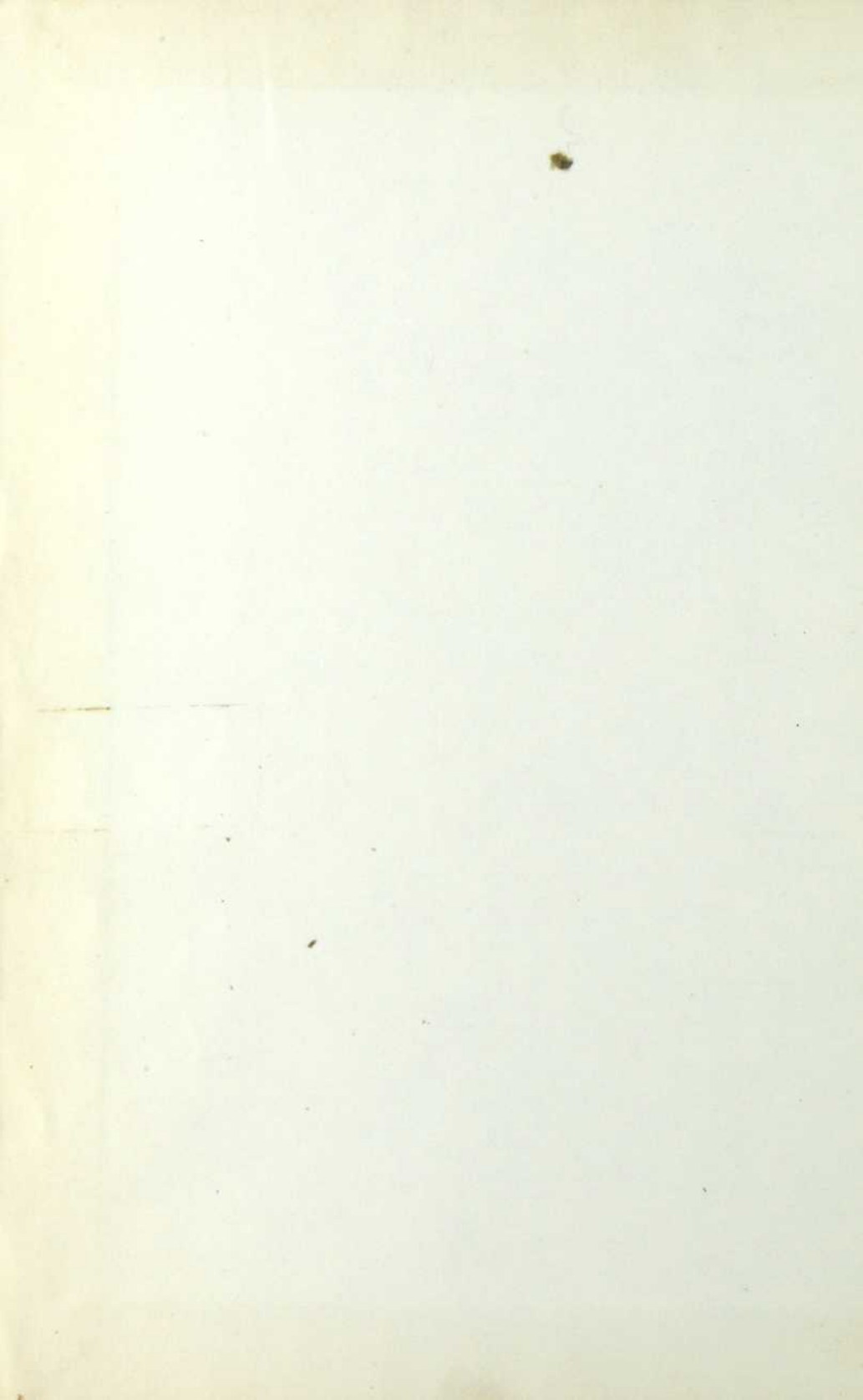


SALLE GAGNON



BIBLIO-
THEQUE
DE LA VILLE DE
MONTREAL

MONTREAL
CITY
LIBRARY



BANK OF MONTREAL

(ESTABLISHED 1817)

Incorporated by Act of Parliament

CAPITAL (all paid up) \$14,400,000.00
REST 10,000,000.00
UNDIVIDED PROFITS, 801,855.41

HEAD OFFICE - - MONTREAL.

BOARD OF DIRECTORS:

HON. LORD STRATHCONA AND MOUNT ROYAL, G.O.M.G., Honorary President,
HON. SIR GEORGE A. DRUMMOND, K. C. M.G., President, **E. S. CLOUSTON, Esq.,** Vice-President
A. T. PATTERSON, Esq., **E. B. GREENSHIELDS, Esq.,** **SIR WILLIAM C. MACDONALD**
R. B. ANGUS, Esq., **JAMES ROSS, Esq.,** **R. G. REID, Esq.**
HON. ROBT. MACEAY.

R. S. CLOUSTON, General Manager.

A. MACNIDER, Chief Inspector and Superintendent of Branches.

H. V. MEREDITH, Assistant General Manager, and Manager at Montreal.

C. SWEENEY, { Superintendent of Branches
 { British Columbia. **W. E. STAYERN,** { Superintendent of Branches
 { Maritime Provinces.
F. W. TAYLOR, Assistant Inspector, Montreal **F. J. HUNTER, Assistant Inspector, Winnipeg**

BRANCHES:

IN CANADA:

MONTREAL.....G. W. DEAN, Assistant Manager.

<p>PROV. OF ONTARIO. ALMONTE, BELLEVILLE, BRANTFORD, BROCKVILLE, CHATHAM, COLLINGWOOD, CORNWALL, DESERONTO, FENELON FALLS, FORT WILLIAM, GODEFRICH, GUELPH, HAMILTON, " Sherman Ave. KINGSTON, LINDSAY, LONDON, OTTAWA, PARIS, PERTH, PETERBORO, PICTON, SARNIA, STRATFORD, ST. MARYS, TORONTO, " Yonge St. Br. WALLACEBURG,</p>	<p>PROV. OF QUEBEC. COOKSHIRE, DANVILLE, FRASERVILLE, GRANDMERE, LAKE MEGANTIC, LEVIS, MONTREAL, " Hochelaga " Papineau Ave. " Pt. St. Charles " Seigneurs St. " St. Henri " West End " Westmount QUEBEC SAWYERVILLE, ST. RAYMOND, WARWICK.</p>	<p>PROV. OF NOVA SCOTIA AMHERST, BRIDGEWATER, CANSO, GLACE BAY, HALIFAX, " North End LEXENBURG, MALHONE BAY, PORT HOOD, SYDNEY, WOLFVILLE, YARMOUTH.</p>	<p>GRAND FALLS, HARTLAND, MONCTON, SHEDDIAQ, ST. JOHN, WOODSTOCK.</p> <p>OARVILLE PORTAGE LA PRAIRIE WINNIPEG " Fort Rouge. " Logan Ave.</p> <p>NORTHWEST TERRITORIES. CALGARY, Alberta. EDMONTON, Alta. INDIAN HEAD, Sask. LETHBRIDGE, Alta. RAYMOND, Alta. REGINA, Sask.</p> <p>PROV. OF BRITISH COLUMBIA ARMSTRONG, ENDERBY GREENWOOD, KELOWNA, NELSON, NEW DENVER, NEW WESTMINSTER, NICOLA, ROSSLAND, VANCOUVER, VERNON, VICTORIA.</p>
-----------------------------------------------------------------------------------------------------------------------------------------------------------------------------------------------------------------------------------------------------------------------------------------------------------------------------------------------------------------------------------------------------------------------------------------------------------------------------------------------------------------------------------------------------------------------------------------------------------------------------------------------------------------------------------------------------------------------------------------------------------------------------------------------------------------------------------------------------------------------------------------------------------------------------------------------------	--------------------------------------------------------------------------------------------------------------------------------------------------------------------------------------------------------------------------------------------------------------------------------------------------------------------------------------------------------------------------------------------------------------------------------------------------------------------------------------------------------------------------------------------------------------------------------------------------------------------------------------------------	-----------------------------------------------------------------------------------------------------------------------------------------------------------------------------------------------------------------------------------------------------------------------------------------------------------------------------------------------------------------------------------------------------------------------------	---------------------------------------------------------------------------------------------------------------------------------------------------------------------------------------------------------------------------------------------------------------------------------------------------------------------------------------------------------------------------------------------------------------------------------------------------------------------------------------------------------------------------------------------------------------------------------------------------------------------------------------------------------------------------------------------------------------------------------------------------------------------------------------------------------------------------------------------------------------------------------------------------------------------------------------------------------------------------------------------------------------------------------------------------------------

IN NEWFOUNDLAND:

ST. JOHN'S, BANK OF MONTREAL. BIRCHY COVE, BAY OF ISLANDS, BANK OF MONTREAL.

IN GREAT BRITAIN:

LONDON, BANK OF MONTREAL, 22 Abchurch Lane, E.C.4, ALEXANDER LANG, Manager.

IN THE UNITED STATES:

NEW YORK, R. V. HEDDEN and A. D. BRATHWAITE, (Acting) Agents, 59 Wall Street.
 CHICAGO, BANK OF MONTREAL, J. M. GRATA, Manager.
 SPOKANE, WASH., BANK OF MONTREAL.

BANKERS IN GREAT BRITAIN:

LONDON, The Bank of England.
 " The Union of London and Smith's Bank, Ltd.
 " The London and Westminster Bank, Ltd.
 " The National Provincial Bank of Eng, Ltd.
 LIVERPOOL, The Bank of Liverpool, Ltd.
 SCOTLAND, The British Linen Company Bank and Branches.

BANKERS IN THE UNITED STATES:

NEW YORK The National City Bank.
 " The Bank of New York, N.B.A.
 " National Bank of Commerce in New York.
 BOSTON, The Merchants National Bank.
 BOSTON, J. B. MOORS & Co.
 BUFFALO, The Marine National Bank.
 SAN FRANCISCO, The First National Bank.
 " The Ar to-Californian Bank, Ltd.

MONTREAL, 19TH DECEMBER, 1905.

The Merchants Bank

OF CANADA

ESTABLISHED 1864

Capital Paid-Up, - - \$6,000,000
Reserve Fund and Undivided Profits, 3,473,197

HEAD OFFICE, - - MONTREAL

BOARD OF DIRECTORS:

President, SIR H. MONTAGU ALLAN (Allan Line Royal Mail S.S. Co.)
Vice-Pres., JONATHAN HODGSON, Esq. (Messrs. Hodgson, Sumner & Co.)

Directors:

JAS. P. DAWES, Esq. (Messrs. Dawes & Co., Brewers, LaSalle.)
THOS. LONG, Esq. (Messrs. Thos. Long & Bros., Collingwood.)
CHAS. R. HOSMER, Esq. (Director Canadian Pacific Railway.)
CHAS. F. SMITH, Esq. (President Jas. McCready Co., Ltd.)
HUGH A. ALLAN, Esq. (of Allan Line Royal Mail S.S. Co.)
C. M. HAYS, Esq. (General Manager Grand Trunk Railway.)
ALEX. BARNET, Esq., Renfrew, Ont. (Wholesale Lumber Merchant and Saw Mills.)

E. F. HEBDEN, General Manager

T. E. MERRETT, Supt. of Branches and Chief Inspector

BRANCHES AND AGENCIES:

ONTARIO			QUEBEC	ALBERTA
Acton	Granton	Preston	Quebec	Alix
Alvinston	Hamilton	Renfrew	" St. Sauveur	Calgary
Athens	Hanover	Stratford	Shawville	Canrose
Belleville	Hespeler	St. George	Sherbrooke	Edmonton
Berlin	Ingersoll	St. Thomas	St. Jerome	Fort Saskatchewan
Bothwell	Kincardine	Tara	St. Johns	Lacombe
Brampton	Kingston	Thamesville	Town of St. Louis	Leduc
Chatham	Lancaster	Tilbury		Medicine Hat
Chatsworth	Lausdowne	Toronto	MANITOBA	Olds
Chesley	Leamington	Walkerton	Arden	Red Deer
Creemore	Little Current	Wattford	Brandon	Stettler
Delta	London	West Lorne	Carberry	Vigerville
Eganville	Lucan	Westport	Gladstone	Wetaskiwin
Elora	Markdale	Wheatley	Griswold	SASKATCHEWAN
Elgin	Messford	Windsor	Maegregor	Arcola
Finch	Mildway		Morris	Maple Creek
Formosa	Mitchell	QUEBEC	Napinka	Whitewood
Fort William	Napanee	Beauharnois	Neepawa	UNITED STATES
Galt	Oakville	Lachine	Oak Lake	New York
Gananoque	Ottawa	LaSalle	Portage la Prairie	W. McNab Ramsay
Glencoe	Owen Sound	Montreal	Shoal Lake	Agent
Gore Bay	Parkdale	" 799 St. Cath. St.	Souris	63 and 65 Wall St.
	Perth	" 2200 St. Cath. St.	Winnipeg	
	Prescott	" 1086 St. Law. St.		

A General Banking Business Transacted. Interest at 3 per cent. per annum allowed on Savings Bank Deposits of \$1.00 and upwards. Interest added to Principal Half-yearly.

Commercial Letters of Credit issued, available in China, Japan, and other Foreign Countries.

Letters of Credit issued to Travellers, payable in all Parts of the World. Drafts sold available in any city or banking town in the United Kingdom or United States.

Agents in Great Britain: **The Royal Bank of Scotland and Branches**

(Special attention given to the business of Emigrants.)

The Garth Co.

ESTABLISHED 1828



Brass and Iron Founders
Hot Water and Steam Engineers
Plumbers.

— MANUFACTURERS OF —

Gas and Electric Light Fixtures, Fire and Water Department Supplies, Brass Railings, Brass and Iron Grill Work.

CAST IRON FITTINGS

(From 1/4 inch to 12 inch and upwards).

— Ammonia Condensers, Hub-end Gate Valves, etc. —

Penberthy Injectors,
Wrought Iron Pipe,
Malleable Iron Fittings,
Hydrants,
Coil Stays,
Brass Pipe,
Vandusen's
Steam Jet Pumps,
Braender's Jet Pumps
and Water Elevators,
Hose Nozzles,
National Meter Co.'s
Water Meters.



Buckeye Bell Foundry Co.'s
Bells,
Branch Pipes,
Jenkins Bros.' Valves,
Wilhelmi Copper Boilers,
Curtis' Pressure Regulators,
McDaniel's Exhaust Heads,
Steam Traps and
Suction Tees,
Bathroom Fittings,
Fire Extinguishers.

26 and 28 Craig Street West

Showrooms: 2442 St. Catherine Street

IRON FOUNDRY:

Cor. Maisonneuve & LaGauchetiere Streets

MONTREAL.

Telephones—

Office: MAIN 3667 Foundry: EAST 422 Showroom: Up 2493 Sales Department: MAIN 3668



SEND FOR CATALOGUES AND PRICE LISTS. —

CORKS and BUNGS

JOHN AULD,

Proprietor

Canadian Cork Cutting Co.

Patent⁺ Machinery

Office and Factory :

642 Lagauchetiere Street,

Corner Chenneville Street.

MONTREAL.

Every description of Cork on hand and cut to order, also Cork Wood and Cork Life Preservers. All sizes of Hard and Soft Wood Taps, Bungs, Spiles, Caps, Bottling Wire and Wax, Cork Driving and Capping Machines, Capsules, etc., etc.

CANE
BOTTLE
BASKETS.
TIN FOIL.

PATENTS PROMPTLY SECURED

We solicit the business of Manufacturers, Engineers and others who realize the advisability of having their Patent business transacted by Experts. Preliminary advice free. Charges moderate. Our **Inventor's Adviser** sent upon request. Marion & Marion, Reg'd., New York Life Bldg, Montreal: and Washington, D.C., U.S.A.

The DANSEUREAU AXLE COMPANY

MANUFACTURERS OF
Collenge, Half-Collenge and
Mail Axles. Dansereau's Patent
Roller Axles. Self Oiler Lorrie
Axles :- :- :- :- :- :- :- :-

Medal and Diploma at the Great World
Fair of Chicago
All Axle repairs done at short notice.

OFFICE and FACTORY:
604 Papineau Ave., MONTREAL

MERCH. TEL. 2004.

J. B. LOVELL

ELECTROTYPYER

25 St. Nicholas St.

MONTREAL

E. F. DARTNELL

Building and Contractors' Supplies, etc.

ESTABLISHED 1893

- SANDSTONES** American, English and Canadian.
- LIMESTONE** Bedford (Indiana) Buff, from the celebrated P. M. & B. Quarries.
- PRESSED BRICK** All Colors, Canadian and American.
- ENAMELLED BRICK.** White and Colored, English, French and American.
- PORCELAIN FACED BRICK.** White, Grey and Mottled, Eggshell Finish.

COMMON BRICK

ORNAMENTAL TERRA COTTA.

TERRA COTTA FIREPROOFING.

- LES GRES DE BIGOT** The celebrated French Tiles and Terra Cotta, all colors.
- GLASS TILES** Plain and Fancy, White and Colored.

CONCRETE MIXERS and other CONCRETE MACHINERY

14 Distinct types of Concrete Mixers, including Gravity, Hand, Steam and Gasoline Power.

3 Distinct types of Measurers and Feeders, for Concrete Aggregates.

STONE CRUSHERS AND SCREENS.

SCOTCH DERRICKS. Hand, Steam and Electric.

AERIAL CABLEWAYS.

PLASTERERS' STEEL CORNER BEADS. WIRE LATH.

TOCKOLITH, a Cement Paint for Ironwork.

R. I. W. DAMP RESISTING PAINTS. For iron and wood-work, brick walls (can plaster on direct without furring) &c.

KONKERIT COATING. For the outside of brick walls, to prevent the penetration of moisture.

BOX STRAPPING. PAIL CLASPS.

BOX FASTENERS. CRATE HINGES, &c.

157 ST. JAMES ST., MONTREAL

Bell Telephone Main 2984

Telegraph Address "DARTNELL, MONTREAL"
A. B. C. Codes, 4th and 5th Editions used.

Telephone Main 2024

E. A. COLE & CO.

WHOLESALE DEALERS IN

PAPER

WRAPPING PAPERS, PAPER BAGS,
TOILET PAPER, WALL PAPER, EN-
VELOPES and STATIONERY, TWINES,
COUNTER CHECK BOOKS, CALEN-
DARS, PRINTING, Etc. * * *

Agents for **B. HELLER & CO.'S** Butchers' Chemicals and Supplies.

84 Youville Square, - - MONTREAL.

Walls and Ceilings in Embossed Steel

Aluminum, Copper, Zinc, Etc.

Artistic, Durable, Economical, Incombustible, Hygienic, Acoustic, the most perfect interior decorations.

IN STOCK

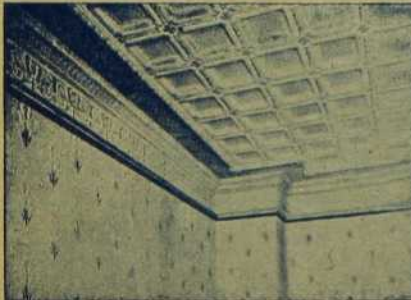
"Hays" Patent Metallic Lathing,
Metallic Shingles and Sidings,
Galvanized Steel Conductors,
Pipes, Eaves and Troughs.

Material used is of the best and
manufactured by

The Best Manufacturers of
Canada and the
United States.

Plans and Estimates free.

J. BENJAMIN DAGENAIS
General Contractor



951 & 953 ST. JAMES STREET. Tel. Up 3192

FYFE SCALE COMPANY



Scale Manufacturers

Designers of Scales for special purposes

CORNER ST. PAUL & ST. PETER STREETS

MONTREAL

Tel. Main 2447

EXCELSIOR

FUR DRESSING and
DYE WORKS

Skins of all Descriptions Dressed and Dyed by

H. R. GUTHEIL

OFFICE AND FACTORY :

67 to 73 Amherst St.

Bell Tel. East 19.

Sole Proprietor

Dyeing Works 1329 Notre Dame St.

Bell Tel. Main 3025.

MONTREAL

E. F. WALTER & CO.

—Importers and—
Manufacturers' Agents

Fine Cutlery

Fire Arms

Clocks

Hardware

Specialties

166-168 MCGILL STREET

MONTREAL.

Bell Tel. Main 2728.

JOS. B. LOVELL

Electrotyper

25 ST. NICHOLAS STREET

MONTREAL

CANADIAN EXPRESS CO.

An improved and perfected system of Transportation in all its branches, resulting from the experience of over HALF A CENTURY, always appeals to the progressive merchant, who must have EXPEDITIOUS SERVICE, LOWEST RATES, and UNDOUBTED RESPONSIBILITY, all of which are abundantly afforded by the

CANADIAN EXPRESS COMPANY

one of the Pioneer Express Companies of the World in the handling of FREIGHT and VALUABLES of every description.

MONEY ORDERS

issued at any hour of the day, payable at par everywhere at very low rates—No delay. No blanks to fill out. Absolutely Safe.

Always buy Canadian Express Co.'s Orders when remitting.

Reaches all important points in Canada and United States.

Special service and low rates to British Isles and the Continent.

Collection Service of Notes, Drafts, etc., unexcelled.

JAS. BRYCE, Vice-President and Manager.

James Hutton & Co.

Joseph Rodgers & Sons, Ltd.

Cutlery to His Majesty



Steel, Peech & Tozer, Ltd.

Steel Axles, Tyres, Spring Steel, &c.

REPRESENTING

W. & S. Butcher

Razors and Files



Thos. Goldsworthy & Sons

Emery and Emery Cloth

Burroughes & Watts, Ltd.

Billiard Tables and Billiard Supplies

Sovereign Bank Building, Montreal

ALEX. McARTHUR & CO.

LIMITED

..... MANUFACTURERS OF

Tarred



Felt



FIBRE AND BUILDING PAPERS

Cyclone Brand "Registered"

Crown Brand

Joliette Sheathing } Tarred and Dry.
Grey and Straw }

Carpet Felt

Distillers of Coal Tar

2 and 3 ply Ready Roofing

Roofing Cement, Pitch

Hanging, News, Print Paper

Manilla, Brown, Fibre, Kraft & Grey
Wrappings



OFFICE :

82 MCGILL ST., MONTREAL

Roofing Felt Factory :

Harbour and Logan Streets

Paper Mills :

Joliette, Quebec

C. A. Chouillou & Cie.

General Brokers

REPRESENTING some of the Leading Firms
in the World in the following Lines:

Mediterranean Fruits.

Specialty of French and
Spanish Nuts and Almonds

Sugars, Molasses and Syrups

No. 1 Round Boiling Peas. Split Peas

H. P. and Prime Beans

Rolled Oats. Pot and Pearl Barley

Coffees and Spices.

Canned Goods & Foreign Cheese

Lobsters, Salmon & Ham for export

Dried and Evaporated Apples

Chemicals and Drugs

for the Grocery Trade.

IMPORTATION. COMMISSION.
EXPORTATION.

*Correspondence
solicited.....*

**It will pay to
communicate
with us
before buying**

Prompt attention given to Orders.

Office and Sample Rooms

14 PLACE ROYALE

(Old Custom House Square)


Montreal

Dominion Line Steamships

WEEKLY SAILINGS:

IN SUMMER—Montreal to Liverpool

IN WINTER—Portland to Liverpool,
calling at Halifax Westbound

 THE Fleet is headed by the S.S. "CANADA," one of the fastest steamers in the Canadian service, having made the passage between Great Britain and Canada in 5 days, 23 hours and 48 minutes.

The S.S. "CANADA"
and S.S. "DOMINION"


Have very fine accommodation for all classes of passengers.

To Europe in Comfort at Moderate Rates ---

By the following Steamers:

S.S. "OTTAWA" (formerly the White Star Line S.S. "Germanic"),

S.S. "KENSINGTON" and S.S. "SOUTHWARK."

 These steamers carry only one class of cabin passengers, namely, Second Cabin, to whom will be given the accommodation situated in the best part of the vessel. This accommodation includes Promenade Decks, Smoke Rooms, Ladies' Rooms, etc., all amidships, and meets the requirements of that section of the travelling public, who, while wanting the best the steamer affords, do not care to pay the higher rates demanded for such in the ships having two classes of cabins.

For all information as to passage or freight, apply to Local Agents, or to

**DOMINION LINE OFFICE,
17 St. Sacrament St., Montreal**

.. THE ..
BEDFORD MANUFACTURING CO.

MANUFACTURERS OF

**Axes, Scythes,
 Rakes, Hoes,
 Forks, Grass Hooks,
 Lightning
 Hay Knives**

And all kinds of Hand Implements
 for the Farm and Garden.

Bedford, P.Q.

LOOK FOR THE
 BEDFORD
 COMPANY'S
 GREEN LABEL
 WHICH IS
 ONLY FOUND
 ON THE
 HIGHEST
 QUALITY OF
 HARVEST
 TOOLS.

Sole Ma
 of the
 FAMOUS
 BEDFORD
 EBONY
 and
 CROWN
 AXES

:: :: THE :: ::
Bedford Manufacturing Co.

Manufacturiers de

**Haches, Moissonneuses,
 Faucheuses, Rateaux,
 Houes, Fourches,
 Faucilles pour l'Herbe,
 Couteaux a Foin Lightning**

Et toutes sortes d'Instruments à main
 pour la Ferme et le Jardin.

Bedford, P.Q.



Recherchez
 L'ETIQUETTE VERTE
 de la
 COMPAGNIE
 BEDFORD

Il ne se trouve que sur
 les
 OUTILS A
 RECOLTER
 de la plus haute
 qualité.



Seu manufacturiers
 des fameuses

HACHES
 "BEDFORD
 ÉBONY"
 ET
 "CROWN"



**LES PLUS GRANDS MANUFACTURIERS
ENTRE MONTREAL ET QUEBEC**

LS. GARON & GIE.

LS. CARON, FRÈRE.

LS. CARON, FILS, Architectes

**Manufacture de Chassis, Portes et Jalousies et
Moulins a Raboter**

Nouveaux, Modernes, les plus Considerablés et les meux Outillé

Constructeurs et Entrepreneurs

L'OUVRAGE à
l'intérieur
des Eglises recoit
tout spéciale-
ment notre at-
tention.



Presque tous les travaux de ce genre, de même
que les contrats pour tout ce qui se rapporte à
la construction des Cathédrales, Eglises Parois-
siales, Colleges, Convents, et Edifices Publics à
une portion très considérable du pays ont été
exécutés par notre maison.

Rue St. Jean Baptiste, NICOLET, P.Q.



**LARGEST MANUFACTURERS
BETWEEN MONTREAL AND QUEBEC.**

LS. GARON & GO.

(LS. CARON, Sen:

L. S. CARON, Jun., Architect)

NEW, MODERN, MOST EXTENSIVE & BEST EQUIPPED

SASH, DOOR AND BLIND FACTORY

— AND PLANING MILLS —

Builders and Contractors

**Interior
Church Work**

receives our
special attention.



Nearly all work of this description, as well as
contracts covering everything for the building
of Cathedrals, Parish Churches, Colleges, Con-
vents, and Public Buildings generally through-
out a very extensive section of country, have
been carried out by our firm.

St. Jean Baptiste St., NICOLET, P.Q.



WHEN ordering your next supply of Stationery, ask your Printer for

Burmese Bond

Easy to write on, and easy to type on.

New Photo Book.

Favorite Paper for Catalogue Work.

Stocked in usual weights and sizes. Samples gladly supplied on application.



CANADA PAPER CO. LTD.
MONTREAL.

College Commercial du Sacre Coeur

Victoriaville, P.Q.



Commercial College of the Sacred Heart

Victoriaville, P.Q.

CE magnifique édifice, complété au mois d'août 1905, occupe un site des mieux appropriés aux fins d'une bonne éducation. Ses appartements vastes et bien aérés sont pourvus d'un splendide matériel. Il est entouré de jardins, de bosquets et de vastes terrasses qui permettent aux élèves de se livrer à des exercices physiques nombreux et variés.

Le cours d'études comprend toutes les branches d'un enseignement commercial français et anglais.

Rev. FRERE OCTAVIUS, directeur



THIS magnificent building is entirely new, having been completed in August, 1905. It occupies an unrivalled location in point of health and salubrity; its large and well-ventilated rooms are supplied with all modern accommodations; it is surrounded by extensive playgrounds which afford to the scholars a great variety of physical exercises.

The course of studies comprises all the branches of a thorough and practical business education in English and in French.

Rev. BRO. OCTAVIUS, director

Long distance Phone East 2430

The Fur Dressing and Dyeing Co.

581-595 CLARK STREET,

ST. LOUIS,

Near Montreal, Canada

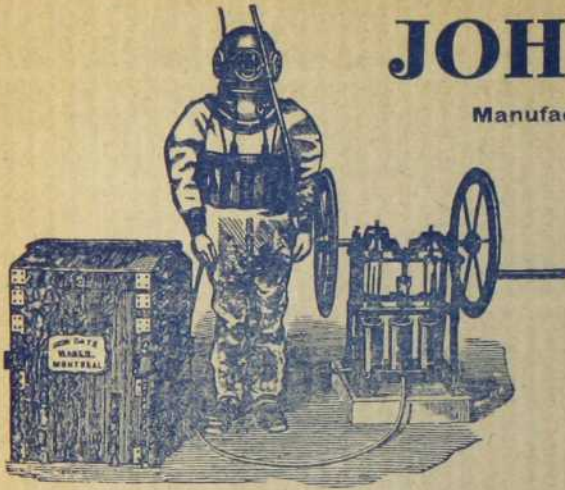
All kinds of Furs
Dressed, Dyed or Blended

Our Stocks are very complete in

Printers' Papers (Wove and Bonds)
Bookbinders' Cloth, Leathers, Marble Papers
Paper Box Makers' Leatherette, Glazed Papers, etc.
PASTE: "STEK-O" the Great Sticker.

Write for Samples

THE WILSON MUNROE COMPANY, Ltd., 106 York St., Toronto, Ont.



JOHN DATE

Manufacturer of

*Diving Apparatus
Patent Dry Earth
Closet Commodes*

BRASS FOUNDER and
COPPERSMITH
APPARATUS
for Sale or Hire.

654 and 656
CRAIG STREET
(New No. 152 West)
MONTREAL.



The MORTON COMPANY, Ltd.

Special Manufacturers of Carbon & Automatic
COUNTER CHECK BOOKS

Sole Manufacturers of the Improved
Automatic Books which give clear and
distinct duplicate and triplicate copies with-
out the use of the loose carbon sheet.

"The Favorite of All."

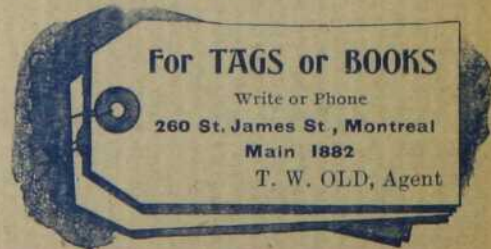
Write or Telephone for prices:
MONTREAL Phone Main 1882 TORONTO

Large Manufacturers of

**SHIPPING TAGS
ENVELOPE TAGS**

Only the best material is used in our Goods.

260 St. James St., MONTREAL
King Street West, TORONTO



J. B. LOVELL,

Electrotyper

23 ST. NICHOLAS ST., MONTREAL

PELICAN and BRITISH EMPIRE LIFE OFFICE

Founded 1797

The Oldest Proprietary Office in the World transacting
Life Assurance business only.

Head Office in Canada . **MONTREAL**

TOTAL ASSETS exceed **\$25,500,000**
CLAIMS PAID exceed **\$67,500,000**

Large Bonuses. **Moderate Premiums**

Canadian Board of Management:

THOMAS FYSHE, Esq.

W. M. MACPHERSON, Esq.

R. MACDOUGALL, PATERSON, Esq.

Attorney and Manager for Canada:

A. McDOUGALD.

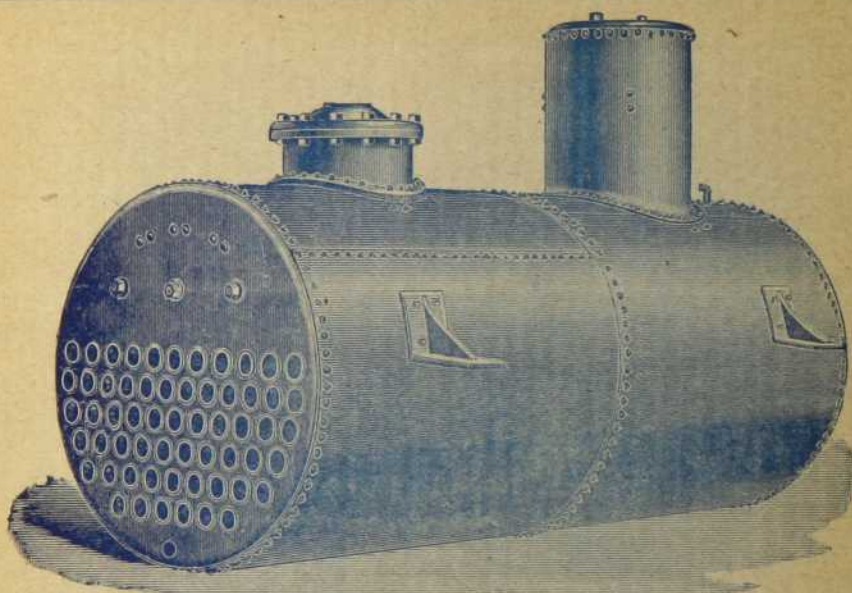
FINE
BOOK
AND

23-25
St. Nicholas
Street

John Lovell & Son, Ltd.

JOB
Printing

MONTREAL
QUE.



The Plessisville Foundry

Hon. N. C. CORMIER,
President

Plessisville, P.Q.

J. H. DUTIL,
Manager

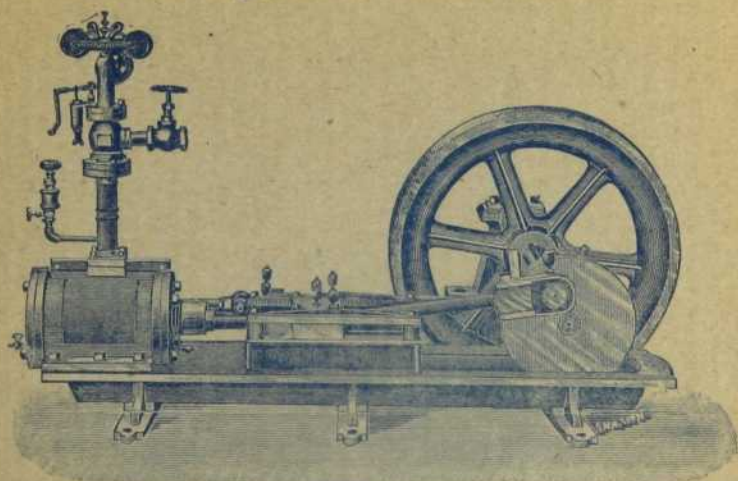
Manufacturers of

Machinery of all kinds

SUCH AS

Steam Engines, Horizontal, Upright and Portable Boilers, Turbine Vulcan Water Wheel, "Napoleon" Water Wheel, Saw and Shingle Mill Machinery, Matchers and Surface Planers, Saw Double Edgers, Double Butting Saws, Saw Gang Slab Machines, Double Butting Saw and Slab Machines combined, Re sawing Machines, New Clapboard Machines, Pony Matcher-Planer, Pony Planer (16, 20 and 24 inch), Shingle Machines with Edger Knives; also with Spring Table combined with Saw; also Improved Dunbar System Shingle Machine, Moulding Machines—7 and 10-inch, Ricker Machines, Buzz Planers (12 and 16-inch), Double Head Shapers, Post Band Saws, Wood Turning Lathes, Knife Grinder Stands, Mortise Machines, Emery Wheel Stands, Double Emery Wheel Grinder, Combined Disk and Drum Sander, Wood Frame Swing Saw, Butter Saw, Shingle Machine, Shingle Packer Stand, Cheese Box Headings Cutting Machine, Press for Packing Cheese Box Headings, Lath Machines with Bolter, Drag Sawing Machine, Swing Sawing Machine on Bench for Firewood, The "Dupont" Power Hammer, Butter and Cheese Factory Outfits, Shafting, Hangers, Pulleys, Moreau's Pulp Wood Barker Machine, Lemire's Stone Lifter, Monfet's Stone Lifter, Wire Nails, etc.

Blacksmiths and Carriage Makers' Supplies — of all —
descriptions



La Fonderie Plessisville

Plessisville, P.Q.

Hon. N. CORMIER,
President

J. H. DUTIL,
Gérant

Manufacturiers d'

Outillages de toutes sortes

TELS QUE

Engins à vapeur, bouilloires horizontales, verticales et portatives, roues à l'eau "Vulcan" et "Napoleon," scies et outillages pour moulin à bardeau, planers à surface, machines à embouvetter et à raboter pony et champion amélioré, dé-ligneurs doubles à deux scies "Edgers," scies à couper de travers double, table pour scier les croutes et les tringles en bois de corde, scie de travers double à madriers et à croutes, machine à refendre "Catherine," machine à clapboard, machine à planer 16, 20 et 24 pouces, machines à bardeau avec déligneur à couteaux; aussi avec table à ressort combiné avec scie; aussi système "Dunbar amélioré," machines à moulures 7 et 10 pouces, Machines à fuseau "Ricker," corroyeurs de 12 et 16 pouces, machines contourneuses et à fraiser, scies à ruban fixées sur poteau 28" et 36" roues, tours à bois, glissières à aiguiser couteaux, machines à mortaiser, supports à meule emery, émouleurs d'établi double rouleau à polir combiné avec disk, scies balancoires sur échelle, scies à botter, machine à paqueter le bardeau, machines à découper les fonds de boites, presses à paqueter les fonds de boites, machine à lattes avec scie à refendre, godendard mécanique, scies pour débiter bois corde sur chevalet avec berçoir, marteau à pouvoir "Dupont," outillage pour fromageries, et beurreries, arbres de couche, supports, poulies, machines à écorcer le bois de pulpe "Moreau," arrache-pierres et souches "Lemire," arrache-pierres "Monfette," clous de broche, etc.

Fournitures et Outillage de toutes descriptions pour

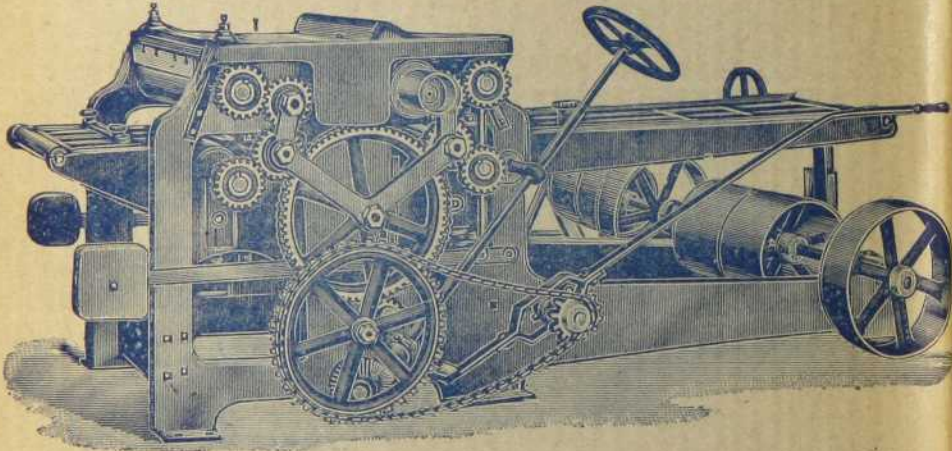
Forgers et Carrossiers.

THE SAVOIE-GUAY CO.

C. E. GOSSELIN, N.P.
President

J. ARTH. SAVOIE,
Secretary

F. T. SAVOIE, M.P.
Man. Director



MAKERS OF

Turbine Water Wheels of all sizes, Gasoline and Steam Engines, Circular Saw Mills, Double Edgers, Shingle Mills, Planers and Matchers, Buzz Planers, Shaping Machines, Lath Machines, Band Saws, Polishing Machines, Trimmers of all descriptions, Butter and Cheese Factory Outfits. Moulding, Mortising, Tenoning and Resawing Machines, "Catherine" Resaw Machine, Acetylene Gas Generators, Shafting, Hangers, Iron and Wood Pulleys and Machinery of all descriptions for factories and saw mills.

FABRICANTES DE

Turbines hydrauliques améliorées de diverses dimensions, Moteurs à Gazoline, Machines à Vapeur, Mécanismes de Scie Ronde, Déligneuses doubles, Machines à bardeau, Raboteuses-bouveteuses, Machines à façonner le bois, Machines à moulures découpées (shapers), Machines à lattes, Scies à ruban, Rouleaux à polir, Godendards à table, à bascule et suspendus pour le bois de corde et de pulpe, Machines à tenons, Machines à percer et mortaiser, "Catherines," Articles de Fromageries et Eeurreries Générateurs à gaz acétylène, Arbres de couche, Supports Paliers en fonte et en bois, Pompes Buck, enfin toutes espèces de machines pour moulins à scie et manufactures.

Plessisville, P.Q.

MACKENZIE MANN RAILWAY SYSTEM

James Bay Railway
Halifax and South-
Western

Great Northern of
Canada.
Inverness Railway &
Coal Company



**FISH,
FLESH
and
FOWL**

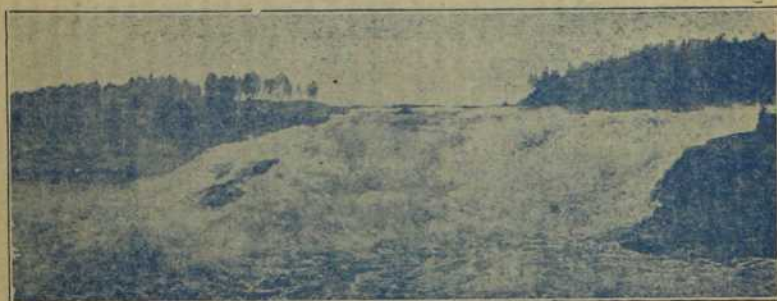
**RIVER,
LAKE
and
MOUNTAIN**

Summer Homes

in the

Laurentians

TWO HOURS FROM MONTREAL



Shawinigan Falls on the St. Maurice River.

"MORE PICTURESQUE THAN NIAGARA."

Midway between Montreal and Quebec.

WATER POWERS, MILL SITES, ETC., FOR SALE.

C. W. SPENCER,
General Manager,

Montreal

GUY TOMBS,
Gen. Freight & Pass. Agent

QUEBEC CENTRAL RAILWAY

... The Tourist Route Between ...

Quebec & Portland,
 Quebec & Boston,
 Quebec & Springfield, and
 Quebec & New York.

Pullman Palace Cars Without Change.

— BETWEEN —

QUEBEC and PORTLAND via Dudswell Jc. and Maine Central R. R. passing through the heart of the White Mountains.

QUEBEC and BOSTON via Sherbrooke & Boston & Maine R. R., this being the direct route for all New England points.

— AND —

QUEBEC and NEW YORK via Sherbrooke, Boston and Maine R. R. and Springfield.

Only Line running solid trains between Quebec and Boston, and between Quebec, the White Mountains and Portland.

For Time Tables, Folders, Tourist Guides and all information,
 ... APPLY TO ...

P. R. NEILL,
 Trav. Pass'r. Agent, Room 80
 North Station, Boston, Mass.

E. O. GRUNDY,
 Gen'l. Pass'r. Agent. Sherbrooke, Que.

F. S. STOCKING,
 City Pass'r. and Ticket Agent, Quebec.

J. H. WALSH,
 General Manager,
 Sherbrooke, Que.

LOVELL'S

Classified Business Directory

FOR 1906-7

PROVINCE OF QUEBEC



PRICE \$4.00

Montreal :

JOHN LOVELL & SON, LIMITED, PRINTERS AND PUBLISHERS.

1906.