

MUNICIPALITIES IN THE VICINITY OF MONTREAL

FOR NAMES OF RESIDENTS AND GUIDE TO STREETS—SEE STREET AND ALPHABETICAL DIRECTORIES.

MUNICIPALITES AUX ENVIRONS DE MONTREAL

POUR NOMS DE RÉSIDENTS ET GUIDE DES RUES—VOIR ANNUAIRE ALPHABETIQUE ET DES RUES

LACHINE

A City on the St. Lawrence nine miles from Montreal and on the Island of Montreal, county of Jacques-Cartier. It is the summer residence of many Montrealers and one of the most prosperous manufacturing centres of the Province of Quebec. Its works are numerous and thousands of men are employed yearly. Population, 28,300—1948.

CORPORATION OF THE CITY OF LACHINE.

Mayor—Anatole Carignan
Treasurer and Director of Finance—Rene Laberge.
City Ck.—Emile Daoust.
Aldermen—Wm. A. Gilbery, Donat Cardinal, J. George Chasse, John Linford, Edward H. Connolly and Daniel Lefebvre.
Recorder's Court—Jacques Viau, recorder; Emile Deneault, clerk.
Filtration Plant and City Engineer—A. J. Deslauriers
Health Officer—Dr. G. Valois.
Chief of Police Department—Frank Pitre
Chief of Fire Department—Angus Mickie.
City Assessor's Department—U. T. Benoit, president.

Catholic School Commission—City of Lachine, Monsignor Alme Bolleau, chairman; Jacques Viau, Robert Hepworth, Eustache Charron, Joseph Fillion, commissioners; Albert St Denis, secretary; Parish of St. Sacrament, Rev. Albert Garlepy, chairman; Pierre Cardinal, Henri Picard, Daniel Lefebvre and Leopold Lalande, commissioners; Emile Daoust, sec-treas.

Protestant School Commission—J. Pitcairn, chairman; L. M. Davidson, A. W. Simson, W. A. Bayne, Kenneth R. Drysdale, K. D. Sheldrick, commissioners; Mrs. V. Dixon, sec-treas.

LONGUEUIL

(Incorporated 1874).

A City situated on the south shore of the St. Lawrence River, county of Chambly. Distant from St. Lambert 3 miles, from Montreal 2 miles from shore to shore, and 6 miles by rail; 6 miles from Boucherville and 10 miles from Chambly. Mail delivered twice a day. Buses operated by the Montreal Tramways Co connect the city with Montreal. Population, 10,117.

CORPORATION OF THE CITY OF LONGUEUIL

Mayor—Paul Pratt.
Aldermen—Clovis Lareau, Dr. J. Aime Dusault, Alex. Tremblay, Lionel Cardinal.
Secretary-Treasurer—Paul Gagnon.
Assessors' Department—
Legal Department—Philippe Lamarre, legal adviser.
Police and Fire Department—Jules Brosard, chief.
Public Works—Hector Leclerc, director.
Water Works Department—Paul Gouin, superintendent.
Recorder—Liguori Hebert, K.C.

COMMITTEES.

Finance—Lionel Cardinal.
Water Works and Lights—Clovis Larrau, chairman.
Police, Fire and Health—Dr. J. A. Dusault, chairman.
Public Works—Alex. Tremblay.

MONTREAL (CITY OF)

See City of Montreal pages 1018-1019.

MONTREAL EAST.

(Incorporated 1910)

Adjoining Mercier ward, City of Montreal, in County of Hochelaga. The most important industries of Montreal East are that of cement, oil refineries and oil-storage tanks, sugar refineries and extensive yards of P. & N. Bus service operates from George V and Notre Dame East throughout the town, 15 miles distant from Place d'Armes square, Montreal. Population about 4,000.

CORPORATION

Mayor—Napoleon Courtemanche.
Aldermen—Elzear Fournier, Henri Leroux, Adelard Rivet, Edmond Robin and Hormisdas Quintal.
Town Clerk—Joseph Legris
Treasurer—Albert Hetu.
Town Manager—J. Ernest Courtemanche.
Chief Accountant—Raoul Chenier.
Town Hall—11370 Notre Dame St.
Assessors' Department—J. N. Langellier, president; Leger Dussault, Charles Bourassa, Charles David, Cyrille Durocher, J. E. Courtemanche, assessors; J. Legris, sec.
Legal Department—Vien and Faribault, legal advisers.
Police and Fire Departments—Liguori Barbier, chief.
Health Department—Dr. D. R. Bisson, medical officer.
Public Works—Raoul Tiernan, director; O. Landry, foreman.
Engineer—Henri Gauthier, I.C.
Building Inspector—J. E. Courtemanche.
Recorder—Jean Paul Renaud.

COMMITTEES

Finance—Henri Leroux, chairman.
Public Works—Adelard Rivet, chairman.
Police and Fire—Elzear Fournier, chairman.
Public Buildings and Parks—Hormisdas Quintal.
Health—Edmond Robin.

AUDITOR

Victor Pelletier, C.P.A.

MONTREAL SOUTH

A Town on the south shore of the River St. Lawrence adjoining Longueuil and one mile from St. Lambert Station, County of Chambly.

The Montreal & Southern Counties Electric Railway (now operated by the Canadian National Railways) gives the residents a 20-minute service with Montreal via Victoria Bridge, and buses, operated by the Montreal Tramways Co., connect with Montreal via the Jacques Cartier Bridge.

The Jacques Cartier Bridge over the St. Lawrence river ends in the centre of the town.

There are three churches, Catholic, United and Anglican, a Town Hall and two schools. Additional bus services operated by Laval Transport Co. and Chambly Transport Co. with connection to St. Catherine and Papineau Sts., every 20 minutes. Population: 3,000.

MUNICIPAL COUNCIL

Mayor—E. Richer.
Aldermen—A. Southart, A. Lefebvre, C. Carlsen, O. Cyr, A. Lambert, E. Haineault.
Secretary-Treasurer—Y. Saurette.
Police and Fire Chief—W. Prindle.
Recorder—C. Macnaughten.
School Commissioners of Catholic Board—J. McCready, president; Jos. Cayouette, Alderie Chevalier, Prime Lord, Trefle Brazeau, Clement Patenaude, sec-treas.
School Commissioners of Protestant Board—D. Pollock, chairman, T. Gregson, Chas. J. Harrod, H. T. Palmer, T. V. Battersby, commissioners; Harold B. Lee, sec-treas.

MONTREAL WEST

(Incorporated as a Town, 1897).

This beautiful suburb, in the County of Hochelaga, is easy of access and is in great favor for residential building. Trains connect with the City at almost all hours both by the Canadian Pacific and Canadian National Railways, while the Upper Lachine and Sherbrooke Boulevard roads afford delightful drives. The Montreal Tramways Co cuts through the lower part of the Town affording a 20-minute service with the city, and enters the Town by the Sherbrooke Boulevard with a 5 minute service. There is also a frequent motor bus service between Montreal West and La-

chine, operated by the Montreal Tramways Company. Public and high schools and a post office with postal delivery twice a day. Population about 3,700.

CORPORATION OF MONTREAL WEST

Mayor—G. W. Hodgson.
Town Clerk—Chas. I. Fraser.
Treasurer—Frank Radcliffe.
Commissioners—F. N. Wiggins, A. S. Runciman, G. H. Brain, M. W. Gallop.

BOARD OF SCHOOL COMMISSIONERS

Chairman—Mrs. E. A. Leslie.
Commissioners—G. P. Aspinall, Peter Millar, John White, P. W. Wright.

OUTREMONT

(Incorporated in 1875.)

A City situated near the west end of Mount Royal Park, forming part of the parish of Montreal, county of Hochelaga. It is bounded on the east by Laurier and St. Michael wards, on the north by St. John ward and Town of Mount Royal, on the west by Mount Royal ward. Two electric car service routes are provided by the Montreal Tramways Co. (Laurier av., St. Catherine rd. and Bellingham rd. for southern section; Bernard av., Outremont av. and Van Horne av. for northern section). A two and a half and five minute service is provided on each route, also autobus service on Bernard av. and Boulevard Mont Royal (its whole length), to Montreal Tramways terminus. The city contains seven very fine schools, four Catholic (College Stanislas, Quebecs Academy, St Germain and Lajoie Schools) three Protestant (Stratheona Academy, Alfred Joyce and Guy Drummond public schools); and three large convents a City Hall and the Outremont Curling, Tennis and Bowling Clubs, Municipal Tennis, Shuffleboard Courts, Skating Rinks and Toboggan Slides. A municipal plant lights the city with electricity. It has an ample water supply, a thorough system of drainage, and an efficient police and fire brigade is maintained for the protection of the city. Easy of access from the City of Montreal (centre) no finer suburb can be found. Population 31,502.

CORPORATION OF OUTREMONT

Mayor—Romuald Bourque.
Aldermen—Alphonse Belanger, C. E. Eugene Maynard, T. H. Cooper, P. de G. Beaubien, Owen J. Callary, S. A. Acres, Hon. Senator E. Beauregard, K.C., John S. Astbury, M.A., L.L.D. and A. Deschamps, C.E., O.B.E.
City Solicitor—Robert Dufresne, K.C.
City Auditors—Sharp, Milne & Co. (Chartered accountants.)
City Clerk and Treasurer—Ernest T. Sampson, F.I.M.T.A.
City Engineer and Manager—Emile La Croix, B.A.Sc.
Building Inspector—Emile Lacroix, B.A.Sc.
Chief of Police—J. Griffith.
Chief of Fire—Z. Santoire.
Medical Health Officer—E. R. Dufresne, M.D.
Recorder—Roger Lacoste, K.C.

ST. LAMBERT.

A City on the south shore of the St. Lawrence, directly opposite Montreal two miles from the centre of the city, in the county of Chambly, district of Montreal. The electric car service is operated by the M. & S. C. Ry. There is also an excellent train service by the Canadian National Railways. The Jacques-Cartier Bridge over the St. Lawrence to the South Shore is only a short distance from the limits of St. Lambert. Population, 8,000.

MUNICIPAL COUNCIL

Mayor—N. H. Simms.
Aldermen—H. S. Robinson, Miss G. Emard, J. L. Townshend, J. D. Robitaille, M. A. MacAllister, J. C. Gilbert, C. F. Potter, sec-treas.

ACCESSORIES MANUFACTURERS Limited
OPERATING MONTREAL WIRE WORKS
CUSTOM MANUFACTURERS OF METAL PRODUCTS
ENGINEERS ELECTRICAL APPARATUS SHEET METALWORK WIRE WORK
SCREW MACHINE PRODUCTS TOOL & DIE MAKERS METAL STAMPINGS
MERCHANDISE DISPLAYS MAGICAL ELECTRIC FIRES
641 ST. JAMES ST. W. - Tel. University 2041

BLAIRLOCK BROS., LIMITED
Customs House Brokers
Cartage and Forwarding Agents
STORAGE FREE AND IN BOND
299 to 307 Common Street - Tel. MA 9264*

**YOUR
CREDIT
IS
GOOD**

on

MEN'S CLOTHING
by
"Fit-Reform"

Ready to Wear
or Tailored to
Your Measure
CANADA'S FINEST
DOLLAR VALUE

FURNISHINGS

a
Complete
Line of
Nationally
Advertised Men's
Haberdashery

FOR LADIES

Fur Coats
Suits and
Cloth Coats
READY MADE OR
MADE TO ORDER

**ELECTRICAL
EQUIPMENT**

C.G.E.
and
PHILCO
REFRIGERATORS
RADIOS
AND OTHER
ELECTRIC
APPLIANCES

BEAUCRAFT

6675 St. Hubert
359 St. Catherine W.
960 St. Catherine W.

Manager—M. J. Rutledge, B.Sc.
Chief of Police—
Supt. of Water Works—A. Le Royer.
Recorder—Aug. Angers, K.C.
Board of Health—Mayor and Aldermen.
Medical Health Official—J. B. Oulton, M.D.
Chief Assessor—R. G. Heughan.
Food Inspector—R. M. Levert, V.S.
Catholic School Board—Roma Gravel, pres.,
Philius Baillargeon, (ec.); Marcel Huel
syndic; J. D. Robitaille.
St. Lambert Board of School Commissioners
—R. L. Harrison, chairman; J. W. Morris-
son, C. J. Green, Mrs F. I. Nourse.
Chambly County Protestant School Board
—J. R. Reilley, chairman; G. L. Collier,
A. M. Weldon, J. R. Beattie, A. E. Steels,
H. B. Lee, sec.-treas.

TOWN OF HAMPSTEAD

A Town adjoining Notre Dame de
Grace ward of the City of Montreal, from
which it is separated on the south by Cote
St. Luke Road, and on the east by Mac-
donald av. Hampstead begins five blocks
west of Snowdon Junction along Queen
Mary Road which leads directly into the
Town.

Hampstead is a beautifully laid out gar-
den Town, and has very rigid building
restrictions. Population about 3,010.

CORPORATION OF THE TOWN OF HAMPSTEAD.

Mayor—Lyman I. Playfair.
Aldermen—H. J. Leitch, R. H. Chadwick,
A. E. Pierce, D. F. Planché and J. C.
Kenkel.
Board of School Commissioners—Mrs. M.
Byers, chairman; Dr. R. S. Jane, Mrs.
Marion Byers, R. H. Chadwick, H. Miller
and E. R. Hankin.

Manager—K. G. Cameron.
Assistant to Manager—C. G. Robertson.
Sec.-Treas.—C. G. Leavitt.
Chief of Police—Arthur Harris
Recorder—G. R. W. Owen.

TOWN OF MOUNT ROYAL

THE MODEL CITY

Eight minutes from the heart of Mont-
real via the electrically-operated Tunnel of
the Canadian National Railways, lying on
the northwest slope of Mount Royal and
adjoining the cities of Montreal and
Outremont.

The Town is conveniently reached by
automobile from Outremont by following
St. Catherine road to Rockland avenue,
crossing the Canadian Pacific Railway
tracks. The Town of Mount Royal's
territory commences at this point. To
the westward it can be reached by
Cote des Neiges rd which is the con-
tinuation of Guy street.

Montreal Tramway buses (corner Queen
Mary rd. and Cote des Neiges) cross the
Town of Mount Royal to Park av. and
Jean Talon with a ten-minute service.

Education—For Protestant and Catholic
School purposes the territory of the Town
of Mount Royal has been created into a
separate school district. The School Com-
missioners have built a fire-proof two-
story and basement school, built of brick
and re-inforced concrete where elementary
and high school grades are taught. A new
fireproof school has been built to accom-
modate the first four grades. The classes
are conducted by teachers of high scholastic
degree. The Catholic education is taken
care of by a new Catholic school, modern
in every detail. Population about 8,300.
School enrolment for both schools 1,200
pupils

CORPORATION

Mayor—R. E. Schofield.
Aldermen—L. E. Lister, F. J. King, E.
E. Lanthier, E. T. Moore, C. T. Russell.
Manager—W. R. J. MacNeil.
Sec.-Treasurer—D. W. Lough.
Engineer—A. M. Hamilton.
Police Dept.—Wm. Mather, acting chief.
*Board of Protestant School Commission-
ers*—H. F. Flnnmore, chairman; Mrs. R.
C. Dickinson, J. F. Close, R. C. Flitton,
J. J. H. Miller, commissioners; John
Thredgold, sec.-treas.
*Board of Catholic School Commission-
ers*—Aime Lacroix, chairman; Dr. W. J.
Lafave, L. Julien, Louis Desjardins, S. J.
Chagnon, commissioners; Adrien Per-
ault, sec.-treas.

Town Office 90 Roosevelt av, Town of
Mount Royal.

VERDUN

The City of Verdun is ideally located at
the south-western limits of Montreal on the
banks of the St. Lawrence River, which is
about 8 miles wide at this point. The mun-
cipality was incorporated as a village under

the name of Rivière St. Pierre in 1874,
changed to the Village of Verdun in 1876,
erected into a Town in 1907 and a City in
1912. Since 1901 its population has increased
from 1898 to 76,905. Possessing few
large industries it is mostly composed
of homes and stores. Its famous
boardwalk is now being replaced by a
modern asphalt promenade, brilliantly light-
ed, along the entire three-mile river front,
and banked with attractive lawns and
shrubbery. Municipal tennis courts, a bow-
ling green, a yacht club, a motor boat club
and a sailing club are also situated here.
In addition a very modern Municipal Aidi-
torium and Hockey Arena seating 4,500,
and a municipal natatorium consisting of
two magnificent open air swimming pools
are located on the river front.

Great success has been achieved in the
building of homes under the National
Housing Act, the City offering suitable lots
for sale at very low prices. On this plan a
small model village has been constructed
in the Crawford Park district.

Educational facilities are excellent, with
thirteen Catholic and seven Protestant
schools and three commercial colleges.
There are two hospitals and nineteen
churches. Public services such as health,
police, fire, water and electricity are of
the best. The City Council gives special
attention to providing and supervising play-
grounds for children, and the Municipal
Playground Commission operates all sports
on the numerous playing fields.

A comprehensive juvenile library is also
operated by the City.

The form of civil government consists of
a mayor and eight aldermen elected every
three years. The City Manager System has
been in force since 1938. Population 76,905.

CORPORATION.

City Hall—475 Church avenue.
Mayor—Edward Wilson.
Aldermen—R. Jeanneau, H. L. Poirier,
J. Lareault, P. E. Joannette, J. A. Souliere,
J. J. Lennon, A. Rolland and T. A. B. Wil-
cox.
*General Manager, Director of Finance and
Treasurer*—J. R. French.
City Clerk—A. J. Burgess.
City Engineer—Henry Hadley, C. E.
Asst. to City Engineer and Supt. of Roads
—J. C. Brosseau.

Superintendent of Works—A. Lefort.
Director of Police—Pierre Gatineau
Director of Fire—Raoul Proulx.
Municipal Playgrounds Commission—Ald.
T. A. B. Wilcox, chairman.
Medical Health Officer—A. D. Archam-
bault, M. D.
Chief Food Inspector—Dr. Geo. Etienne.
Legal Advisor—Francis Fautoux, K.C.
Asst. Legal Advisor—Yves Leduc.
Recorder—E. Desjarlais, K.C.
Auditor—L. D. Viau, C.A.
Assessors—L. Belanger, G. E. Good, W.
Tessier.

VILLE LaSALLE

A Town on the North Shore of the River
St. Lawrence, situated between Verdun and
the City of Lachine, directly connect-
ed with Montreal West and Ville St. Pierre
on the north in Jacques Cartier County.

The Town Hall is located at No. 13
Strathgry av. Council meets on second
Wednesday of each month. Fire and police
departments are located at 8745 La Salle
Blvd., Ville La Salle. The C. P. R., N. Y. C.
and Delaware & Hudson R. R. Co., supply
service, "La Salle" being the name of the
Railway Station. Population, 8,387.

CORPORATION OF THE TOWN OF LaSALLE

Mayor—J. Anatole Leroux.
Aldermen—Albert W. Stinson, B. T. Cle-
ment, Albert Bolvin, Wellie Larente,
Lionel Bannon and Alf. Lefebvre.
Secretary-Treasurer—Alb Gravel.
Engineer—Athanasie Latour.
Chief of Police and Fire—Daniel Demers.
Health Dept.—Maurice Lacharits, M.D.
Recorder—Jacques Belque

VILLE ST. LAURENT

A thriving Town and parish in Jacques
Cartier County on the island of
Montreal and on the C.N.R., 4 miles
from Montreal. The Montreal Tram-
ways Co. runs electric car and bus
service between here and Montreal at
5-minute intervals day and night. Popu-
lation about 13,000.

CORPORATION

Mayor—Dr. J. H. Authier.
Town Manager and Clerk—Lucien Tou-
pin, C.A.
Treasurer—David Rochon.
Assistant-Treasurer—Robert Valade.
Superintendent—R. Lecavaller.
Town Engineer—Marcel Huot.

Aldermen—East Ward, L. C. Harris, J.
Frs. Belanger, Roland Mantha; West Ward,
Paul-Emile Laperriere, Maurice Cousineau,
J. Henry Pettit.

VILLE ST. PIERRE

The Town is situated on the north side
of the Lachine Canal, between the City of
Lachine and the Town of Montreal West,
in Jacques Cartier County, being traversed
by the C.N.Ry and the C.P.Ry., and having
a twenty-minute service to the heart of the
City of Montreal by the Montreal Tram-
ways Co. Population, 4908.

CORPORATION

Mayor—C. A. Kirkland, M.D., M.P.P.
Aldermen—Joseph Laurendeau, Donat
Boyer, Lucien Rochon, Richard Scott,
D. Gowans, J. E. Fournier.
Sec.-Treas.—H. F. Malo.
Asst. Sec.-Treas.—Miss C. Gadoury.
School Commissioners—Donat Boyer, pres-
ident, councillors; Joseph Laurendeau,
Victor Paul, Lucien Rochon, Conrad Pi-
card; H. F. Malo, sec.-treas., Com Sch.
Fire & Police Chief—Eugene Lavallee.

WESTMOUNT

The City of Westmount is beautifully
situated on the western slope of Mount
Royal, and from the upper level a magni-
ficent view of the St. Lawrence River, Lake
St. Louis and surrounding country is ob-
tained. The city is almost exclusively
residential and may be designated a "city
of homes." The city is governed by a
mayor and five aldermen, elected for a
term of two years by the city at large. The
city manager form of government has been
in vogue for 36 years, and the city's pro-
gress is evidence of the wisdom of the
adoption of this system of government.

The city owns and operates in a very
efficient manner an electric light and power
plant and garbage destructor plant.

Park and playground spaces owned by
the city cover an area of about 119 acres
equal to 12 per cent of the total area of
the city.

Many municipal tennis courts are in
great demand during the summer months
and every facility is given for the enjoyment
of winter sports.

The Westmount Athletic Grounds on St.
Catherine Street, containing an area of 7 1/2
acres, are being reconconditioned after their
use by the Army.

The city owns a free public library. Dur-
ing the year 174,335 volumes were circu-
lated for home use.

The Victoria Hall as a community centre
is continually in use for church, charitable,
educational, fraternal, municipal, political
and social activities.

Public education is provided by the
school commissioners of Westmount and the
school commission of St. Leon de West-
mount. In addition there are a number of
private schools.

The city is supplied with filtered water
and a 98 per cent. efficiency is required.
The water is regularly tested to assure that
a maximum of purity is maintained. Popu-
lation about 26,825.

CORPORATION.

City Hall—Sherbrooke W. cor Argyle av
Mayor—J. S. Cameron.
Aldermen—J. S. B. Pemberton, comm-
issioner of finance; R. L. Campbell, comm-
issioner of roads and municipal buildings;
W. A. Kennedy, commissioner of electric
light & power, health and public welfare;
R. H. Dean, commissioner of police and
fire; B. Panet-Raymond, commissioner of
parks.

City Clerk & Treasurer's Dept—C. W.
Houston, secretary-treasurer; A. W. D.
Swan, assistant secretary-treasurer; A. B.
Bourdon, city accountant; J. W. Weldon,
K.C., city solicitor; Riddell, Stead, Graham
and Hutchison, C.A., Auditors.

Board of Assessors—J. Colin Kemp,
chairman; Donald Baillie and A. S.
Rutherford.

General Manager & City Engineer—P. E.
Jarman.

Asst. General Manager—Thos. J. Hughes
Roads Dept—P. G. Delgado, supt of
Public Works

Electric Light Dept—E. P. Brown, supt.
Police Dept—R. A. Byford, chief.

Recorder's Court—Chas. A. Hale, K.C.
recorder; A. E. Laverty, deputy.

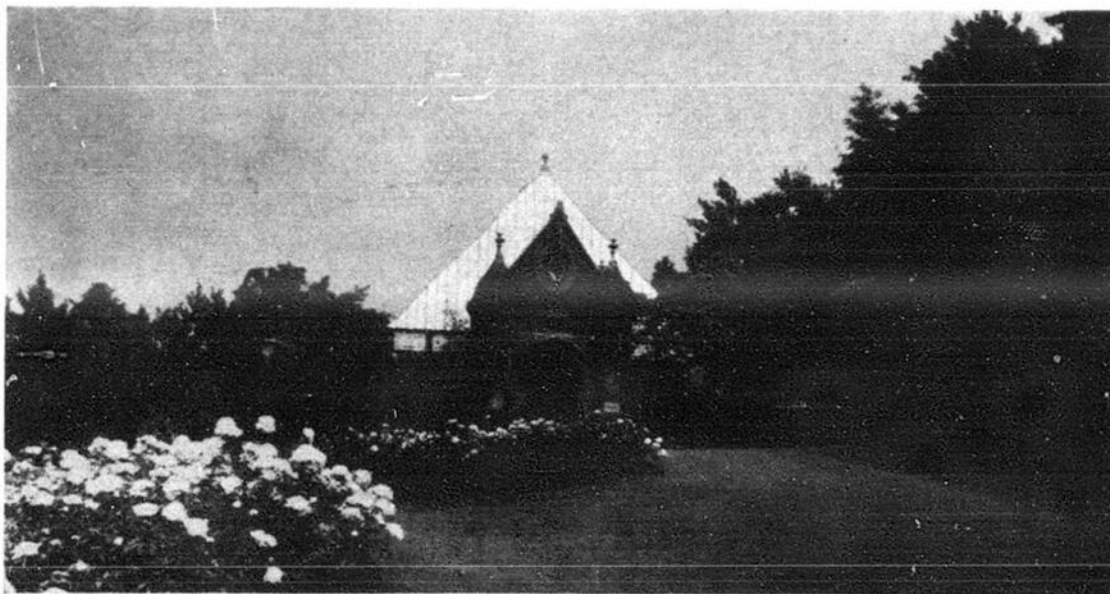
Fire Dept—W. C. Cobb, chief.
Health Dept—Dr. M. B. Donaldson, med-
ical health officer.

Parks and Playgrounds—E. J. Anderson,
superintendent.

Library—Miss Kathleen Jenkins,
librarian; Miss Margaret Good, reference
librarian; Miss R. Gwendoline McEwen,
children's librarian.

Library Trustees—A. W. McMaster, W.
B. Scott, K.C., and Mrs. Grant Reid.

Ample Cemetery Space for Another 100 Years

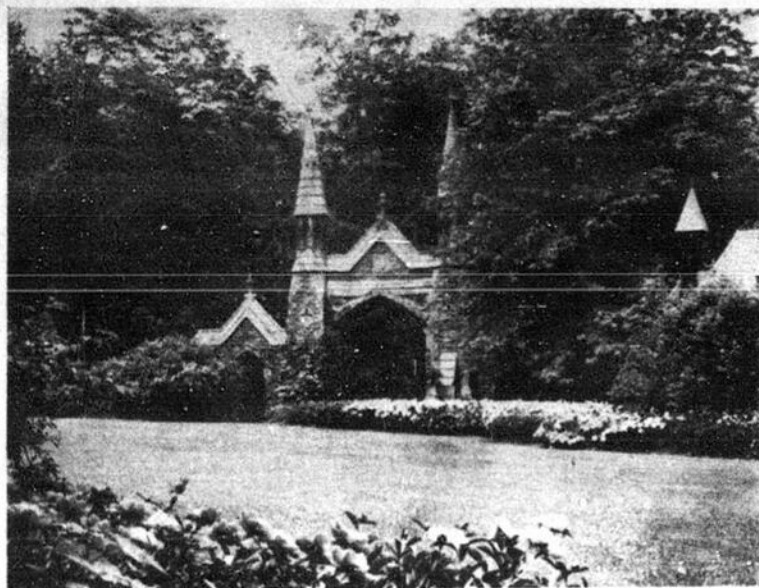


Crematory—Mount Royal Cemetery, First Crematorium in Canada

**NON-PROFIT—ALL REVENUES ARE USED FOR OPERATION, DEVELOPMENT
AND MAINTENANCE**

**The Trustees Give Their Services
Without Remuneration**

**No Commission paid to any Undertaker
or Monument Dealer**



Main Entrance — Mount Royal Cemetery



Waiting Room — Hawthorn-Dale Cemetery

Mount Royal Cemetery Company

1207 Drummond Street, Montreal 25 - Phone MARquette 8059

Office Hours (Except on Legal Holidays)	}	MONDAY to FRIDAY: 9.00 a.m. to 12.00 Noon
		1.30 p.m. to 5.00 p.m.
		SATURDAYS: 9.00 a.m. to 12.00 Noon

TRUE TO THE HIGHEST TRADITIONS OF FINE PAPERMAKING




**SUPERFINE LINEN
RECORD**

Canada's finest bond paper, owes its time-defying strength and beauty to its 100% new rag content. Yet it costs but a fraction of a cent more per letter than the cheapest bond. Your printer, lithographer or engraver will be pleased to produce your stationery on this superfine Rolland paper.

IN the family of papers which bear the "R" Shield watermark are types for every business purpose. Some, like Superfine Linen Record, are supreme examples of the papermaking craft; others are "service" papers for routine tasks.

But all are true to the Rolland tradition—all meet the most critical tests of their fitness to fulfill their appointed purpose in their appointed price class.

ROLLAND PAPER
COMPANY LIMITED

High Grade Paper Makers since 1882
MONTREAL, QUE.



BRANCH OFFICE: TORONTO, ONT. • MILLS AT ST. JEROME, QUE. AND MONT ROLLAND, QUE.