

PARC NATIONAL DE LA POINTE-TAILLON

DISCOVERY GUIDE

2019



WELCOME TO THE PARK



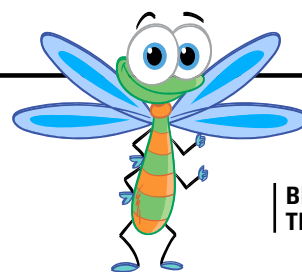
Lac Saint-Jean, beaches, cycling and...islands!

With its kilometres of sandy shores, a 45-kilometer bike path and primitive campsites on the shores of Lac Saint-Jean and Rivière Péribonka, this large peninsula is a slice of pure paradise! It offers great potential for the discovery and observation of plant and animal life, with 546 plant species, 139 bird species, including the magnificent sandhill crane, a large beaver population and a moose herd.

The new areas annexed to Parc national de la Pointe-Taillon, which will delight for outdoors enthusiasts, will soon be developed. Among these areas is a string of thirty islands and islets in the Saint-Gédéon area. A story to keep an eye on...

Welcome, and enjoy your visit to paradise!

Find out more at sepaq.com/pointetaillon



**BELLA
THE DRAGONFLY**

THE DRAGONFLY, THE PARK'S ANIMAL INSIGNIA

Fragile, floating, graceful beauty ... and dreaded predator! Many adjectives come to mind for describing this small, lively insect with amazing agility. This is an unusual species of dragonfly, seen mainly in the park's peat bogs in early summer. When it was identified in the park, the species had never been mentioned before in the Saguenay-Lac-Saint-Jean region.

ANNUAL QUÉBEC NATIONAL PARKS CARD

Québec's national parks offer a one-of-a-kind experience. Explore this exceptional world of nature with the Annual Québec National Parks Card, featuring:

- Unlimited access to ALL national parks for 12 full months
- Many exclusive benefits, including a free night of camping

Details at sepaq.com/parkscard

MUST-DOS



A

SWIMMING AND OTHER WATER SPORTS

Lac Saint-Jean is a true inland sea, whose water warms up quickly in the summer sun. The long, sandy, multicolored beaches invite you to relax. There is a big well-equipped beach that includes a supervised area. It offers free chairs and umbrellas, a children's playground and boat rental (canoe, pedal boat, kayak, stand up paddle boards).



B

CYCLING

Forty-five km of bike paths go all around the peninsula along Lac Saint-Jean and Rivière Péribonka. Easy and accessible to everyone, they cut through beaver and moose habitat.

Along the way, you'll find rest stops and signs of wildlife, as well as information about the fauna, flora and human history of Pointe Taillon. Bicycles are available at the park rental center.



C

WILDLIFE WATCHING

Keep your eyes peeled!

Watch for discreet signs of many animals. You never know when you could encounter a beaver or moose. For the best odds of spotting any of these animals, be there at dawn or dusk.



D

CAMPING AND CABIN ACCOMMODATIONS

The campsites are true oases, where you can enjoy the sandy beaches, the warm water of the lake and the peaceful setting. Primitive campsites are accessible via the bike path along Lac Saint-Jean, and others, along the banks of Rivière Péribonka, are accessible via the Péribonka water shuttle.

You can simplify your life with a ready-to-camp site: Twenty traditional or Étoile tents offer all the comfort you need on two sites that you can reach by bike or car. Another very comfortable option is the new fully-equipped Écho cabin. All of these options offer privileged access to Lac Saint-Jean.



**NEW SECTOR
NEW OFFERING
UPCOMING ACTIVITIES**



Download via Avenza Maps

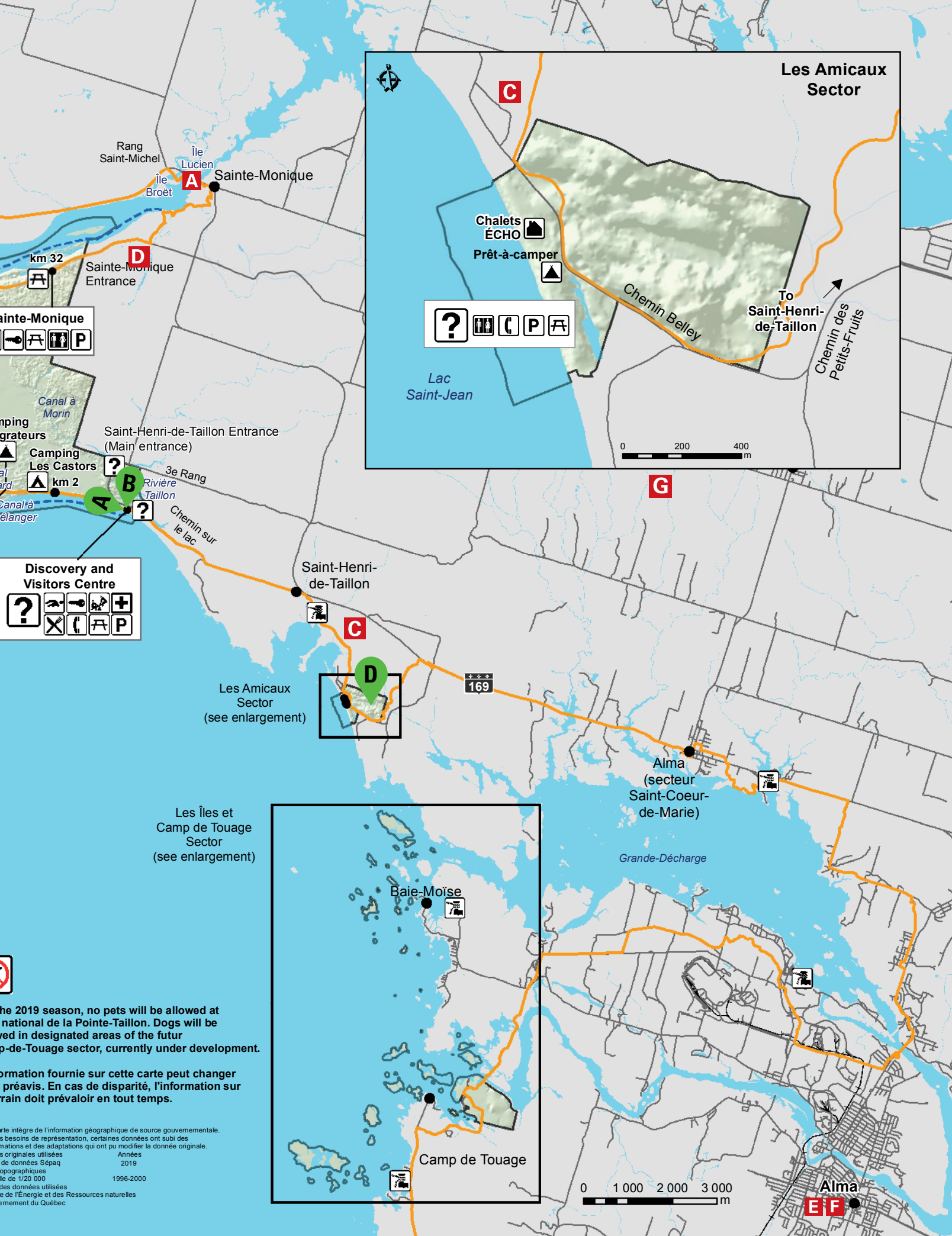
A to G
SEE PAGE 12 FOR THE ACCOMMODATION LIST, IDENTIFIED ON THIS MAP.

	Registration centre / Information		Telephone
	Playground		Washroom
	Picnic area		Observation tower
	Camping / Ready-to-camp		Lifeguard on duty
	Rustic camping		First aid
	Cabin		Suggested kayak route
	Rental		Bike path
	Marina / Landing		Boat shuttle
	Rest stops		Road network
	Food services		National park boundary
	Parking lot		

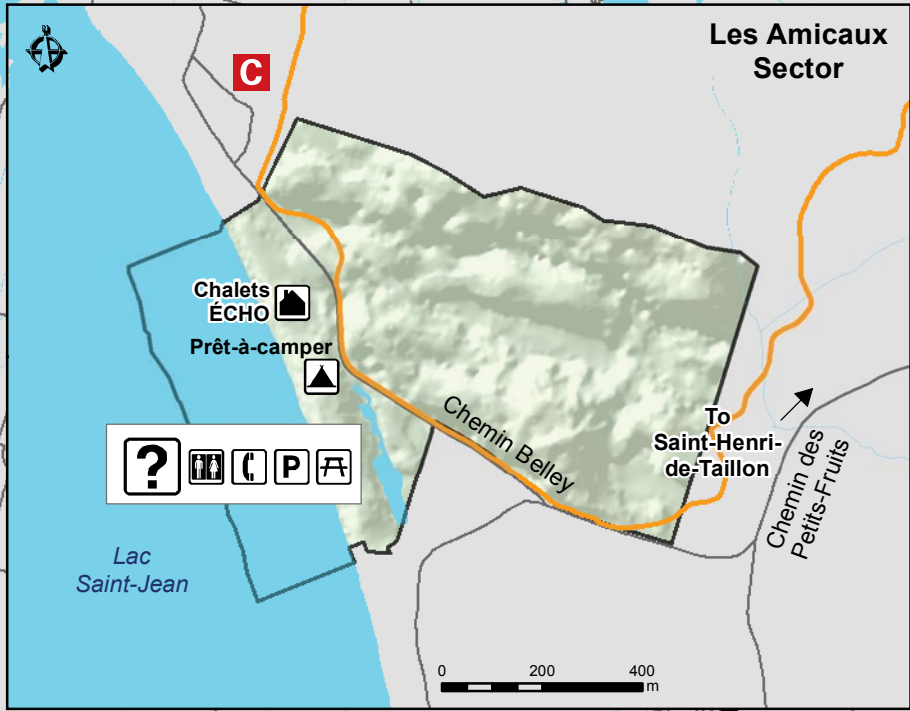
**For t
Parc
allow
Camp**

**L'inf
sans
le ter**

Cette ca
Pour de
transform
Donnée
Banque
Cartes
à l'éche
Source
Ministèr
© Gouver



Les Amicaux Sector



Sainte-Monique

- Icon: Accessible
- Icon: Picnic
- Icon: Parking

Discovery and Visitors Centre

- Icon: Question mark
- Icon: Accessible
- Icon: Picnic
- Icon: Parking
- Icon: First aid

Rang Saint-Michel
 île Lucien
 île Broët
 Sainte-Monique

km 32
 Sainte-Monique Entrance

Camping Les Castors
 km 2
 3e Rang
 Rivière Taillon
 Saint-Henri-de-Taillon Entrance (Main entrance)

Saint-Henri-de-Taillon

Les Amicaux Sector
 (see enlargement)

Les Îles et Camp de Touage Sector
 (see enlargement)

Alma (secteur Saint-Coeur-de-Marie)

Baie-Moïse

Camp de Touage

Alma

For the 2019 season, no pets will be allowed at the national de la Pointe-Taillon. Dogs will be allowed in designated areas of the futur Camp de Touage sector, currently under development.

Information fournie sur cette carte peut changer sans préavis. En cas de disparité, l'information sur terrain doit prévaloir en tout temps.

Carte intégrée de l'information géographique de source gouvernementale. À des besoins de représentation, certaines données ont subi des modifications et des adaptations qui ont pu modifier la donnée originale. Données originales utilisées : Années de données Sépaq : 2019. Données topographiques : Échelle de 1/20 000. Données utilisées : de l'Énergie et des Ressources naturelles, Gouvernement du Québec.



DISCOVER OUR TRAILS

SITES TO DISCOVER	LENGTH AND DURATION (HOURS)*		LEVEL OF DIFFICULTY*	STARTING POINT
Tour of the park** – Pointe Taillon is a peninsula and is therefore surrounded by water. On one side is Lac Saint-Jean and on the other is Rivière Péribonka. Since most of the trail is right by the water, you can stop and take a break at various rest areas. There are not many hills.	45 km loop	5	D	Discovery and Visitors Centre
Pointe Chevette – This is where one of the last residents of Pointe-Taillon lived. Mr. Chevette was mandated to reforest the lands that had been left fallow after the lake level was raised and the settlers left. There is a rest area here with a shelter, a campsite, and the dock for the Péribonka water shuttle.	40 km round trip	4.5	D	
The lighthouse – This is the site of an old navigation beacon that was used in the timber floating era. The lighthouse is no longer there but it's a beautiful place to stop. (The water is shallow and warm ...)	20 km round trip	2.5	I	
The Véloroute and the delta crossing – The Véloroute des Bleuets circles Lac Saint-Jean and goes along the park's cycling paths. In both directions visitors will go across the big peat bog, travel over the rolling dunes of the delta and ride beside Lac Saint-Jean.	15 km round trip	1.5	F	Northern gatehouse or river



Please note that dogs will be authorized in some parts of the future Camp-de-Touage sector, currently under development.

F : Easy **I** : Moderate **D** : Difficult

* The durations and difficulty levels mentioned are indicative and refer to the summer season.

** The majority of cyclists do not do the whole tour of the park. Depending on amount of time you have, you can ride part of the cycling path and come back the same way. Remember to bring water!

FAMILY FUN IS HERE!



Free! For your children 17 years of age and under

In all seasons, your children can come with you absolutely without charge.

ACCESS TO NATIONAL PARKS

OUTDOOR EQUIPMENT LOAN*

A VAST ARRAY OF ADAPTED ACTIVITIES for the whole family

ACCESSORIES* ON LOAN for young children

*Certain conditions apply.

OUR TOP PICKS

AT PARC NATIONAL DE LA POINTE-TAILLON

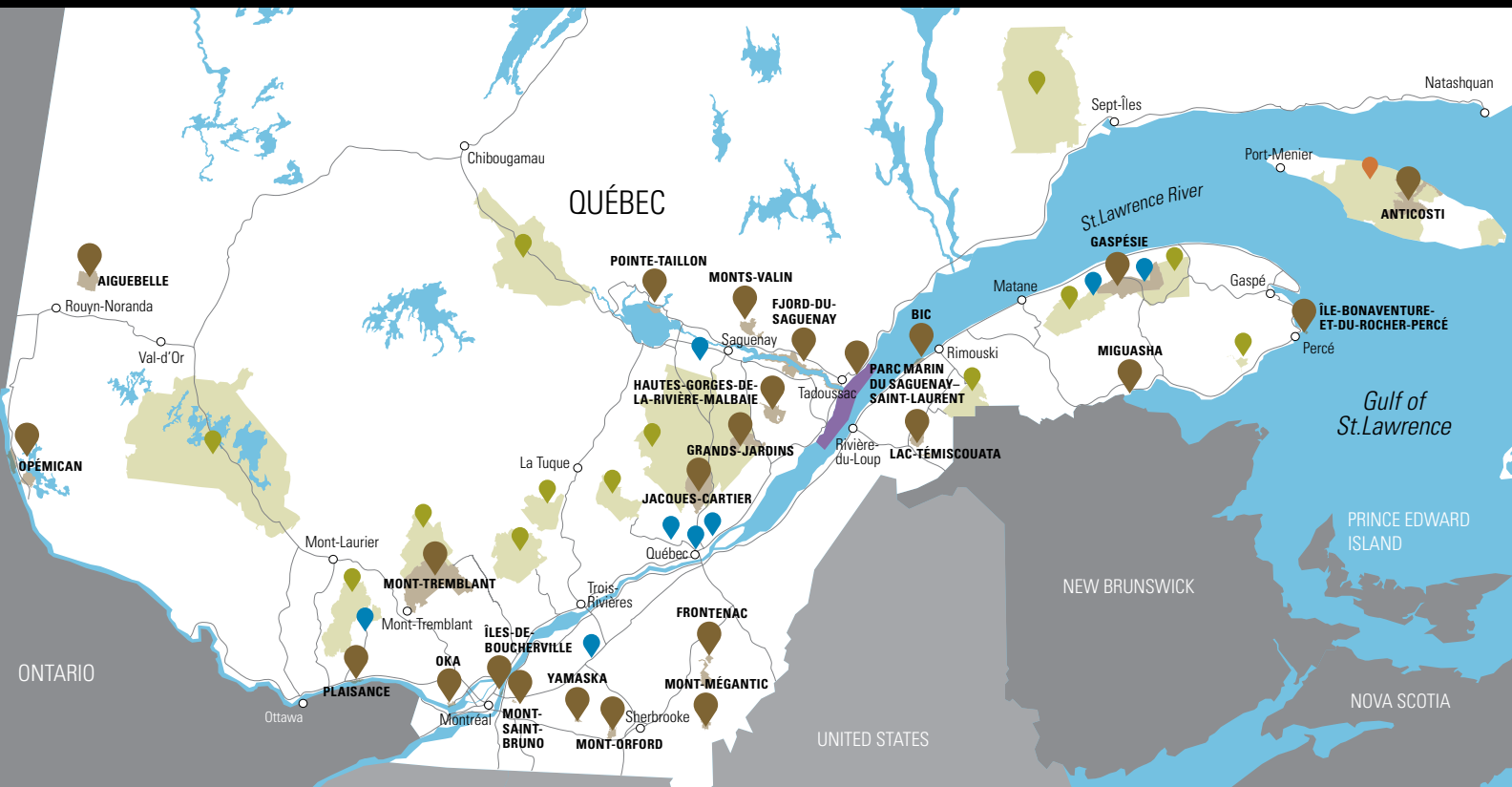
Take a look at our musts: an activity you won't want to miss, a trail to discover as a family, accommodations ideal for get-togethers.

- Supervised beach
- New playground in the beach sector
- Water volleyball
- Family nature rally

THE LARGEST NATURE AND OUTDOOR NETWORK IN QUÉBEC

Sépaq has the privilege of developing territories of incredible richness. Among them, 24 national parks stand out as unique. These are protected areas that belong to all Quebecers and that provide lasting memories for visitors who proudly make such exceptional destinations their own.

Discover all our destinations at sepaq.com



NATIONAL PARKS |
 WILDLIFE RESERVES |
 TOURIST ESTABLISHMENTS |
 SÉPAQ ANTICOSTI

QUÉBEC NATIONAL PARKS DAY September 7, 2019

FREE ADMISSION

SÉPAQ WINTER DAY JANUARY 25, 2020

FREE ADMISSION



Come and see us at our shop

A number of exclusive products to discover!

Take a little bit of nature home with you when you visit our gift shop. **All profits from the sale of our products are reinvested in Québec's national parks.** A great way to contribute to the protection of our natural heritage!

DISCOVERY TIME



EQUIPMENT RENTAL

EQUIPMENT	PER HOUR	4 HOURS	PER DAY
Adult bicycle	\$14.75	\$29.50	\$42.00
Children's bicycle, ages 17 and under (families)	Free	-	-
Children's bicycle, ages 17 and under – groups	\$7.25	\$14.75	\$21.00
Children's bike trailer	Free	-	-
Tandem bicycle	\$21.00	\$42.25	\$60.25
Electric bicycle	\$21.25	\$42.50	\$60.50
Fatbike	\$20.75	\$41.75	\$59.50
2-seat pedal boat	\$17.00	\$33.50	\$48.00
Canoe	\$17.75	\$35.50	\$51.00
Solo recreational kayak	\$16.00	\$32.00	\$46.00
Tandem recreational kayak	\$19.50	\$39.00	\$55.50
Solo sea kayak	\$18.00	\$36.50	\$52.00
Tandem sea kayak	\$24.50	\$49.00	\$69.75
Stand up paddle board (SUP)	\$17.75	\$31.00	\$44.50
Beach or cycling accessories	-	-	\$7.25

50% off morning boat rentals for guests with accommodations.

ACCOMMODATIONS

PRIMITIVE CAMPING
Starting at **\$23.⁸⁰** /night

**CAMPING
CYCLING
BIKE TRAILER** **\$105**
/ night for 2 adults

Don't forget!

Primitive campsites are not accessible by car. They can be reached by bicycle, on foot or by boat. A baggage trailer is available free of charge. Drinking water is only available at the Discovery and Visitors Centre and the rental centre. Plan to bring enough water for your excursions and for your needs at the campsite

READY-TO-CAMP			
TRADITIONAL		ÉTOILE	
\$92	\$122	\$104	\$134
Low season	High season	Low season	High season

CABINS The five (5) new fully-equipped Écho cabins on the shore of Lac Saint-Jean will be available for rent in fall and winter.



A LAND BORN OF WATER...

Pointe Taillon is a land of many faces that juts into the waters of Lac Saint-Jean. The sandy environment is very fragile. Consisting entirely of sand carried by Rivière Péribonka, the point was formed at the end of the last glaciation..

A beach, a lake, origins... using a basin, a park warden will illustrate how Pointe Taillon formed and explain the long-ago origins of Lac Saint-Jean.

Location: Beach kiosk

WILDLIFE

Animal life is intense in the park. Obvious clues, such as dams, huts and beveled tree trunks, reveal the presence of beaver. Moose have also established their headquarters in the park. In recent years, the sandhill crane has been seen in the territory. Its hoarse cries echo in the vastness of the bog... magical!

Moose are numerous at Pointe Taillon. Let a park warden show you how to read signs of their presence. Take a hike in the woods to learn all about the herd that lives in this national park.

Location: km 5 of the bike path



A PLACE OF HISTORY...

Between 1890 and 1930, a population of farmers settled on Pointe Taillon. In 1925, 52 families lived there and the total population was 307 people. There were three schools, a cheese factory and a sawmill. When Lac Saint-Jean became a reservoir lake in 1926, flooding displaced these families. Abandoned fields and sites where houses once stood testify to the human occupation of the site.

Have a chat with a member of the Hudon family. But don't be fooled, the Hudons of Jeanne-d'Arc still live in their time, 1916! An entertaining way to catch up on the latest news and gossip in this little corner of the world...

Location: km 6.5 km of the bike path

Larouche, Gaudreault, Fortin, Simard or Tremblay?

Don't miss the new discovery panels along the cycling path about the first families who lived on the park's territory in the early 1900s. Who were the inhabitants of the village of Jeanne d'Arc and what were their daily lives like?



FLORA

Water is everywhere in the park. In the center of the point is a thick layer of vegetation made up of sphagnum moss. This vast peat bog acts as sponge that captures and retains rainwater. Besides the bog, where "carnivorous" plants are found, there are also ponds, marshes and aquatic meadows.

The peat bog is a trove of hidden secrets! A park warden will tell you how it was formed. You will discover a strange world populated with fascinating plants.

Location: km 1.5 of the bike path

Check the daily schedule posted at the Discovery and Visitors Centre. Activities may be added to this programme.

CONSERVE FOR TOMORROW



CONSERVATION ISSUES

The phenomenon of shoreline erosion at Parc Pointe-Taillon is worrisome. The level of Lac Saint-Jean, which differs the most from the natural cycle in the fall, can cause very active erosion of the Pointe Taillon shoreline when storms hit. Stabilization structures (ripraps, breakwaters, revegetation) were built in collaboration with Alcan, now Rio Tinto, to protect wildlife habitats and facilities subject to imminent threat. Since 2002, a shoreline monitoring program has been conducted annually. A system including 115 terminals was installed on the park's shores to measure the retreat of the shoreline and document this phenomenon.

An agreement in principle was reached between elected officials of Lac Saint-Jean, the Pekuakamiulnuatsh First Nation and Rio Tinto on a common position regarding participatory management and the level of Lac Saint-Jean. It is included as one of the conditions of the shoreline stabilization program decree for 2018-2027. When community actors agree to work together to find solutions to a problem, there is every reason to rejoice and be hopeful.

To find out more about conservation initiatives and issues in Québec's national parks, visit <https://www.sepaq.com/parcs-nationaux/conservation/enjeux/index.dot>



PLAY ^{IT} SAFE



Photo : Steve Deschênes, Parc national des Grands-Jardins

IN THE WILD, YOUR SAFETY IS YOUR RESPONSABILITY

Sépaq's mission is to ensure the widest possible access to Québec's most beautiful natural treasures. Sépaq is committed to the safety of its visitors and urges you to play it safe!

Preparing yourself adequately is the first step in the safe and enjoyable practice of your favourite activities. **YOU ARE RESPONSIBLE FOR YOUR OWN SAFETY** and risk management is an integral part of your experience.

Before leaving for an excursion, **MAKE SURE YOU HAVE THE SKILLS AND ABILITIES REQUIRED** to practice your chosen activity **AND RESPECT YOUR PHYSICAL LIMITS**. Your outing should leave you with nothing but pleasant memories. We invite you to consult our safety guides for Sépaq activities, available at sepaq.com/security. You will also find a list of organizations that can help you plan your activities safely.

sepaq.com/security

CHECKLIST

BEFORE YOU LEAVE HOME

- Plan on going with at least one other person.
- Check the weather report.
- Pack water and food, even if the activity is only for a few hours.
- See that you have appropriate clothing and footwear for anticipated weather conditions.
- Let somebody know the exact location of your destination and the time you plan to return home.


ONCE YOU ARE ON SITE


- Do not rely on your cellphone.
- Check how much time it will take to complete your activity.
- Obey signs and notices, including bans on open fires.


WHEN YOU GET BACK

- Once you have completed your activity, make sure that you report to our staff anything wrong or any damage or problems you encountered.

REMINDERS

 During your visit to a national park, you must always carry your entry fee receipt or your annual entry card.

 Remember that animals are in their natural habitat and that you are a visitor. To ensure both your safety and theirs, feeding them is prohibited; otherwise they may lose their natural fear of human beings and become aggressive.

 To preserve our natural riches, you are not allowed to remove any natural elements (animals, plants, dead wood, rocks, etc.). Please also keep to established hiking trails to avoid trampling flora.

IN CASE OF EMERGENCY: 911

SÛRETÉ DU QUÉBEC: 310-4141 (general number) / *4141 (for cellphones)

*Where cellphone networks are available. The costs and expenses incurred in conducting search and rescue operations are the responsibility of the beneficiary. You can obtain protection against these risks from an insurer.

Parc national de la Pointe-Taillon

835, rang 3 Ouest
Saint-Henri-de-Taillon, Québec G0W 2X0
Information: 418 347-5371
Reservation: 1 800 665-6527
parc.pointe-taillon@sepaq.com
sepaq.com/pointetaillon

Legal Deposit: 2019
Bibliothèque et Archives nationales du Québec

Photos Parc national de la Pointe-Taillon,
Sépaq Francis Doucet, François Fabianek, Mathieu Dupuis,
Pierre Bernier, Steve Deschenes, Sébastien Larose and
Annie Fournier.



PÉRIBONKA WATER SHUTTLE



From the village of Péribonka, this shuttle service ferries you across to the bike path in the national park and to the Pointe-Chevrette and l'Île-Bouliane campgrounds.

The shuttle is operated by the municipality of Péribonka for cyclists, pedestrians and campers. Use the parking lot at the right of the DJ Tremblay grocery store, facing the Péribonka marina.

No reservations are needed for the shuttle. Go directly to the marina in Péribonka or Pointe-Chevrette to cross to the other shore. Payment is made at the Discovery and Visitors Centre or in the shuttle. Please show up a few minutes in advance.

Schedule: every day, from June 14 to September 15, 2019.

RATES ¹ (TAXES INCLUDED)

	ADULT	CHILD	FAMILY
One way	\$8.00	\$5.00	\$20.00
Round trip	\$12.00	\$7.00	\$30.00
Île Bouliane ²	\$20.00	\$11.00	\$40.00

Free for your children 5 years of age and under.

¹ The park entry fee is mandatory in addition to these fares.

² Notice to campers: round-trip rates for Île Bouliane may vary depending on equipment.

SHUTTLE TIME TABLE ¹

		10 a.m.	11 a.m.	Noon	1:00 p.m.	2:00 p.m.	3:00 p.m.	4:00 p.m.	5:00 p.m.
Péribonka									
Pointe-Chevrette		10:30 a.m.	11:30 a.m.	12:30 p.m.	1:30 p.m.	2:30 p.m.	3:30 p.m.	4:45 p.m.	5:30 p.m.
Île Bouliane ²	9:00 a.m.		11:45 a.m.					4:30 p.m.	

¹ Subject to weather conditions on Lac Saint-Jean.

² The hours may change.

Contact the skipper 418 720-8215

ACCOMMODATIONS AND ACTIVITIES IN THE AREA

Municipality of Péribonka

CAMPING: WIRELESS INTERNET ACCESS, HEATED POOL, MINI-PUTT, WATER PLAY AREAS, BIKE RENTAL

418 374-2626

MARINA: SEA KAYAK RENTAL, BOAT RAMP, DAILY DOCK RENTAL

418 374-1001

"LE BISTR'EAU PUB PÉRIBONKA"
RESTAURANT

418 374-2424

LOUIS-HÉMON MUSEUM

Information and reservation:

418 374-2967 #103 | 1 888 374-2967

cosep@peribonka.ca

www.peribonka.ca



SEE THE LOCATION ON THE MAP ON PAGES 4 AND 5.

A

Auberge Île-du-Repos (nearby Sainte-Monique)

105, chemin de l'Île-du-Repos, Péribonka (Québec) G0W 2G0
Phone: 418 347-5649 | ileurepos@bellnet.ca | www.ileurepos.com



B

Aubergîte au Petit Bonheur

374, rue Plante, Péribonka (Québec) G0W 2G0
Phone: 418 374-2328 | aupetitbonheur@sympatico.ca



C

Camping et plage Belley

100, Chemin Belley, Saint-Henri-de-Taillon (Québec) G0W 2X0
Phone: 418 347-3612
nfo@campingbelley.com | campingbelley.com



D

Camping Pointe-Taillon

900, rang 6 Ouest, Sainte-Monique (Québec) G0W 2T0
Phone: 418 347-3124 | 1 877 347-3124
campingpointetaillon@outlook.com | campingpointetaillon.com



E

Hôtel Universel (centre-ville d'Alma)

1000, boul. des Cascades, Alma (Québec) G8B 3G4
Phone: 418 668-5261 | 1 800 263-5261
hotel@hoteluniversel.com | www.hoteluniversel.com



F

Travelodge Alma (centre ville d'Alma)

450, rue Sacré-Coeur West, Alma (Québec) G8B 1L9
Phone: 418 668-3222 | 1 877 917-3222
reception@travelodgealma.com | www.travelodgealma.com



G

Jardin Scullion

1985, rang 7 Ouest, L'Ascension-de-Notre-Seigneur (Québec) G0W 1Y0
Phone: 418 347-3377 | 1 800-SCULLION (1 800 728-5546)
info@jardinscullion.com | www.jardinscullion.com