

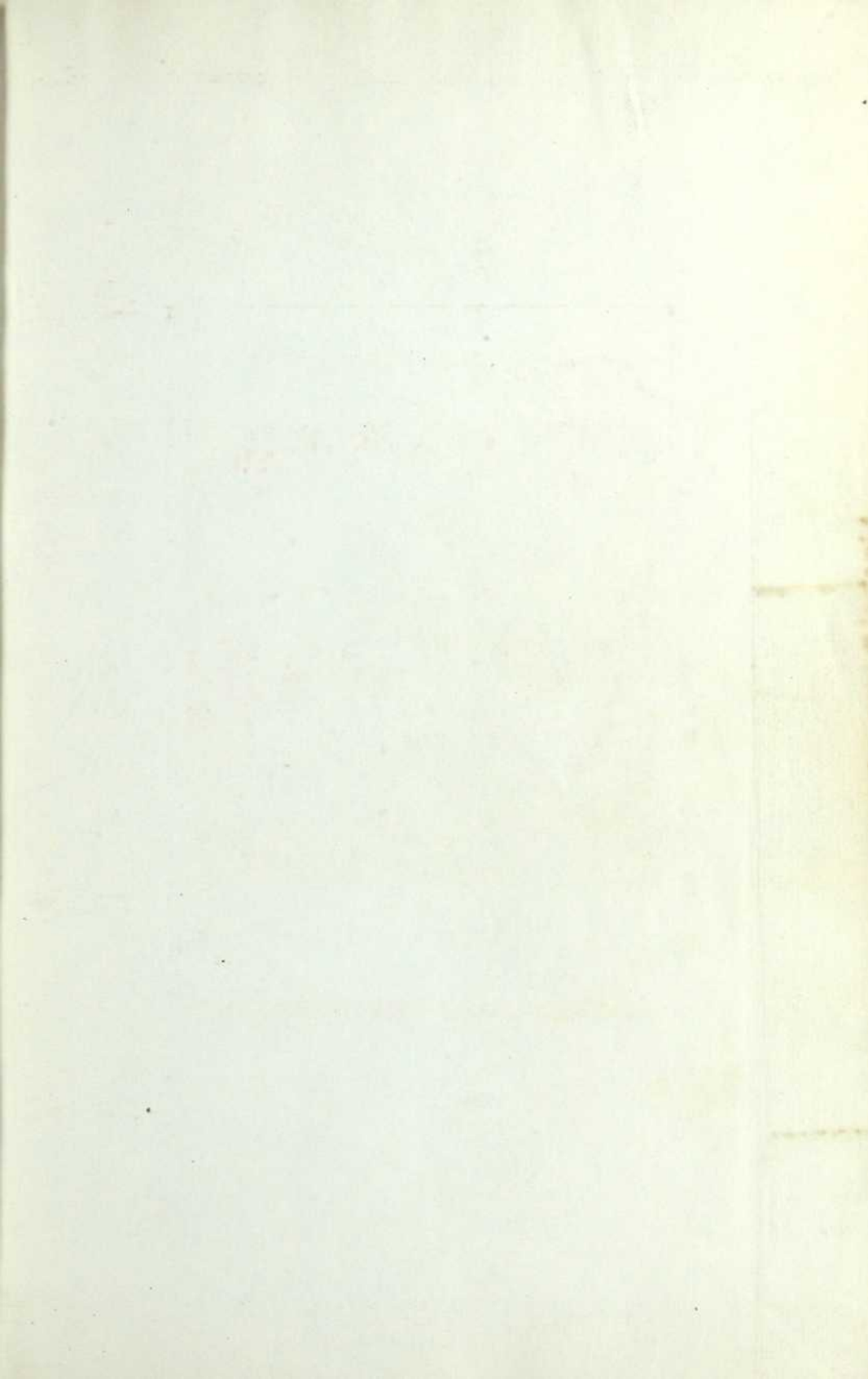


SALLE GAGNON



BIBLIO-  
THÈQUE  
DE LA VILLE DE  
MONTREAL

MONTREAL  
CITY  
LIBRARY







# The Bank of British North America

Established in 1836.

Incorporated by Royal Charter in 1840.

<b>CAPITAL PAID UP</b>	-	-	<b>\$4,866,666</b>
<b>RESERVE FUND</b>	-	-	<b>2,238,666</b>

## COURT OF DIRECTORS

JOHN H. BRODIE, Esq.	RICHARD H. GLYN, Esq.	FRED. LUBBOC, Esq.
JOHN JAMES CATER, Esq.	E. A. HOARE, Esq.	C. W. TOMKINSON, Esq.
J. H. M. CAMPBELL, Esq.	H. J. B. KENDALL, Esq.	GEO. D. WHATMAN, Esq.

**HEAD OFFICE: 5 GRACECHURCH STREET, LONDON, E. C.**

A. G. WALLIS, Secretary.

W. S. GOLDBY, Manager.

**HEAD OFFICE IN CANADA: - - ST. JAMES STREET, MONTREAL**

**H. STIKEMAN, General Manager**

JAMES ELMSLY, Superintendent of Branches

H. B. MACKENZIE, Superintendent of Central Branches, Winnipeg.

JAMES ANDERSON, Inspector.

O. R. ROWLEY, Inspector of Branch Returns.

A. G. F. VY, Assistant Inspector.

W. G. H. BELT, Assistant Inspector.

## BRANCHES IN CANADA

Montreal Branch	A. E. ELLIS, Manager.	J. R. AMBROSE, Sub. Manager.
Under Man.	Annapolis, B. C.	London, Hamilton Rd.
oft, B. C.	Estevan, Sask.	" Market Square
ard, Sa-k.	Fenelon Pa. Ont.	Yongueuil, P. Q.
Man.	Fredericton, N. B.	Montreal, P. Q.
in, Ont.	Greenwood, B. C.	" St. Catherine St.
Man.	Halifax, N. S.	Midland, Ont.
" Ont.	Hamilton Ont.	North Battleford, Sask.
nt, Ont.	" Barton St.	North Vancouver, B. C.
algary, Alta.	" Victoria Av.	Oak River, Man.
Campbellford, Ont.	Hedley, B. C.	Ottawa, Ont.
Gaillingford, Man.	Kaslo, B. C.	Quebec, P. Q.
Davidson Sask.	Kingston Ont.	Reston, Man.
Dawson Yukon	Levis P. Q.	Ross and, B. C.
Duck Lake, Sask.	London, Ont.	Rosthern, Sask.
		St. John, N. B.
		" Union Street
		Toronto, Ont.
		" King and
		" Dufferin Sts.
		" Bloor and
		" Lansdowne
		Toronto Junction, Ont.
		Trail, B. C.
		Vancouver, B. C.
		Victoria, B. C.
		Weston Ont.
		Winnipeg, Ont.
		Yorkton, Sask.

## AGENCIES IN THE UNITED STATES

NEW YORK, 53 Wall Street, H. M. J. McMICHAELE &amp; W. T. OLIVER, Agents.

SAN FRANCISCO, 120 Sansome Street, J. C. WELSH and A. S. IRELAND, Agents.

CHICAGO, Merchants Loan and Trust Co.

LONDON BANKERS: The Bank of England, Messrs. Glyn &amp; Co.

FOREIGN AGENTS: Liverpool—Bank of Liverpool. Scotland—National Bank of Scotland, Limited, and Branches. Ireland—Provincial Bank of Ireland, Limited, and Branches. National Bank Limited, and Branches. Australia—Union Bank of Australia, Limited. New Zealand—Union Bank of Australia, Limited. India, China and Japan—Mercantile Bank of India, Limited. West Indies—Colonial Bank Paris—Credit Lyonnais. Lyons—Credit Lyonnais. Agents in Canada for the Colonial Bank, London and West Indies.

Issues Circular Notes for Travellers available in all parts of the World. Drafts on South Africa and West Indies may be obtained at the Bank's Branches.

# The New . . . Card Index . . and Electric . . Addressograph



OVER 30,000  
... IN USE ...

To the average business man the word "Addressograph" means only an addressing machine, but remember that all addressing machines are not "Addressographs." It is a copyrighted word applied to a variety of machines built by the Addressograph Company:

**Card Index Addressographs**, in which metal printing plates are used and filed in steel drawers.

**Card Index Addressographs**, in which sliding rubber type is used.

**Chain Addressographs**, in which the addresses are linked together endless chains; either metal printing plates or sliding rubber type can be used.

**Special Addressographs** for pay-rolls, customers' lists, stockholders' lists, gas consumers, life and fire insurance, etc.

**Dupligraph**, with sliding rubber type system, prints fac-simile typewritten letters at the rate of 1,200 per hour. At each impression it prints a complete letter, date, salutation, different address, and fac-simile signature in a different colored ink—all at one operation.

Our systems are dividend payers because they constantly save you money. We have over 30,000 satisfied customers, who are using our machines on lists numbering from two hundred to half a million names.

We gladly make quotations for complete outfits to anyone interested. Send to-day for free illustrated catalogue No. 11, together with sample printing plates for our various systems.

**ADDRESSOGRAPH COMPANY**  
101 St. Francois Xavier St., Montreal

— THE —  
**Universal Adding Machine**

For More Convenient and Desirable Operating Advantages



We would appreciate an opportunity to show the practical operation of the Universal in your office, at our expense and our trouble. A simple request will suffice to bring to your office a Universal Adding Machine. After a demonstration of its merits we will leave it with you for a thorough trial by yourself at your own convenience. If you don't want to keep it there is not the slightest obligation on your part to do so. Complete catalogue sent free.

Write now to

**Universal Adding Machine Co.**

OFFICES AND FACTORY:

3807-3819 Laclede Avenue      :-      Saint Louis, Mo.

Canadian Branch Office: 101 St. Francois Xavier St., Montreal

# The Merchants' Bank

OF CANADA

ESTABLISHED 1854

Capital Paid-Up	-	-	\$6,000,000
Reserve Fund and Undivided Profits	-	-	4,034,256
Total Deposits, over	-	-	37,000,000
Total Assets, over	-	-	52,000,000

HEAD OFFICE, - - MONTREAL

BOARD OF DIRECTORS:

President, SIR H. MONTAGU ALLAN (Allan Line Royal Mail S.S. Co.)  
 Vice-Pres., JONATHAN HODGSON, Esq. (Messrs. Hodgson, Sumner & Co.)

Directors:

CHAS. R. HOSMER, Esq. (Director Canadian Pacific Railway.)  
 THOS. LONG, Esq. (Messrs. Thos. Long & Bros., Collingwood.)  
 CHAS. F. SMITH, Esq. (President - Jas. McCready Co., Ltd.)  
 HUGH A. ALLAN, Esq. (of Allan Line Royal Mail S.S. Co.)  
 C. M. HAYS, Esq. (General Manager Grand Trunk Railway.)  
 ALEX. BARNET, Esq., Renfrew, Ont. (Wholesale Lumber Merchant and Saw Mills).  
 BRYCE J. ALLAN, Esq., (of Allan Line Royal Mail S.S. Co.)

E. F. HEBDEN, General Manager

T. E. MERRETT, Supt. of Branches and Chief Inspector.

BRANCHES AND AGENCIES:

<b>ONTARIO</b>	Hanover	St. Thomas	Quebec	Edmonton
Acton	Hespeler	Tara	" St. Sauveur	Fort Saskatchewan
Alvinston	Ingersoll	Thamesville	Rigaud	Lacombe
Athens	Kincardine	Tilbury	Shawville	Leduc
Belleville	Kingston	Toronto	Sherbrooke	Lethbridge
Berlin	Lancaster	Walkerton	St. Jerome	Medicine Hat
Bothwell	Lansdowne	Watford	St. Johns	Olds
Brampton	Leamington	West Lorne	St. Jovite	Red Deer
Chatham	Little Current	Westport	<b>MANITOBA</b>	Sedgewick
Chatsworth	London	Wheatley	Brandon	Stettler
Chesley	Lucan	Williamstown	Carberry	Tofield
Creemore	Markdale	Windsor	Gladstone	Vegreville
Delta	Menford	Yarker	Griswold	Wataaskiwin
Douglas	Mildmay		Macgregor	<b>SASKATCHEWAN</b>
Eganville	Mitchell	<b>QUEBEC</b>	Morris	Arcoia
Elora	Napanee	Beaubarnois	Napinka	Carduff
Elgin	Oskville	Lachine	Neepawa	Gainsboro
Finch	Orillia	Montréal (Head Office) St.	Oak Lake	Maple Creek
Fort William	Ottawa	Office St.	Portage la Prairie	Oxbow
Galt	Owen Sound	James Street	Russell	Whitewood
Gananoque	Parkdale	" 1255 St. Cath.	Souris	<b>BRITISH COLUMBIA</b>
Georgetown	Perth	St. East	Winnipeg	Vancouver
Glencoe	Prescott	" 320 St. Cath.	<b>ALBERTA</b>	Victoria
Gore Bay	Preston	St. West	Calgary	<b>UNITED STATES</b>
Hamilton	Renfrew	" 1330 St. Law.	Gamrose	New York
	Stratford	Boulevard	Carstairs	63 & 85 Wall St
	St. George	Town of St. Louis	Daysland	

A General Banking Business transacted. Interest at 3 per cent. per annum allowed on Savings Bank Deposits of \$1.00 and upwards.

Commercial Letters of Credit issued, available in China, Japan, and other Foreign Countries.

Letters of Credit issued to Travellers, payable in all parts of the World. Drafts sold available in any city or banking town in the United Kingdom or United States.

Agents in Great Britain—THE ROYAL BANK OF SCOTLAND.

ESTABLISHED 1825

A A A A

# THE STANDARD LIFE ASSURANCE COMPANY

OF EDINBURGH, SCOTLAND

Head Office for Canada - - Montreal

---

Subsisting Assurances	-	\$142,216,277
Invested Funds	-	57,254,050
Annual Income	-	7,271,409
Bonuses Distributed	-	35,000,000
Investments under Canadian Branch		17,000,000

---

**Low Rates, Absolute Security**  
**~ Unconditional Policies ~**  
**Prompt Settlement of Claims**

WM. H. CLARK-KENNEDY

Secretary

D. M. McGOUN

Manager for Canada



WHEN ordering your next supply of Stationary, ask your Printer for

## Burmese Bond

Easy to write on, and easy to type on.

New Photo Book.

Favorite Paper for Catalogue Work.

Stocked in usual weights and sizes. Samples gladly supplied on application.

FEB 7 - 1908



CANADA PAPER CO. LTD.

MONTREAL.

# ALEX. MCARTHUR & Co., LTD.

Black Diamond Brand



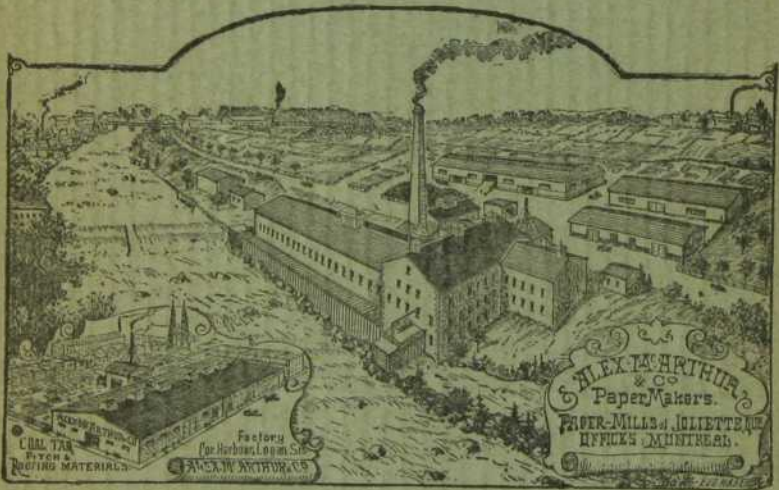
TARRED FELT

## ... PAPER ... MANUFACTURERS

P. O. BOX 839

BELL TELEPHONE MAIN 208

MERCHANTS 311



### ASPHALT ROOFING

### ...(Genasco Brand)...

2 and 3-ply Ready Roofing, Building Papers,  
Tarred and Dry Sheathing, Carpet Felt.  
Coal Tar Products and Roofing Cement.  
Hanging and Print Paper.  
Brown, Grey, Fibre and Manilla Wrappings.

PAPER MILLS: - - JOLIETTE, Que.

Felt Factory: HARBOUR AND LOGAN STS.

Office: 82-84 MCGILL STREET

## MONTREAL

# Eastern Townships Bank

ESTABLISHED 1859.

Capital Paid Up - - \$3,000,000

Reserve Fund - - - 2,000,000

Head Office: Sherbrooke, Que.

JAMES MACKINNON, General Manager.

## DIRECTORS.

WILLIAM FARWELL, President. S. H. C. MINER, Vice-President.  
 C. H. KATHAN, J. S. MITCHELL,  
 N. W. THOMAS, GARDNER STEVENS,  
 A. C. FLUMERFELT, FRANK GRUNDY,  
 O. A. ROBERTSON, G. G. FOSTER, K.C.

## BRANCHES.

MONTREAL OFFICES:

Metropolitan Building, 179 St. James Street

East End Branch, La Patrie Building, 129 St. Catherine Street East.

West End Branch, 533 St. Catherine Street, West.

Actonville, Que.	Keremeos, B.C.	St. Ferdinand d'Halifax, Que.
Ayer's Cliff, "	Knowlton, Que.	St. Gabriel de Brandon, "
Bedford, "	Lake Megantic, "	St. George-Beauce, "
Beebe Plain, "	Lawrenceville, "	St. Hyacinthe, "
Black Lake, "	Lennoxville, "	St. Johns, "
Bromptonville, "	Magog, "	St. Joseph-Beauce, "
Canticook, "	Mansouville, "	Sherbrooke, "
Coleman, Alta.	Marbleton, "	" Wellington St., "
Cookshire, Que.	Marioville, "	Sutton, B.C.
Cowansville, "	Midway, B.C.	Taber, Alta.
Danville, "	North Hatley, Que.	Thetford Mines, Que.
Eastman, "	Ornstown, "	Vancouver, B.C.
Farnham, "	Phenix, B.C.	Waterloo, Que.
Fernie, "	Richmond, Que.	Waterville, "
Granby, "	Rimouski, "	West Sheffield, "
Grand Forks, B.C.	Rock Island, "	Windsor Mills, "
Henningford, Que.	Roxton Falls, "	Winnipeg, Man.
Huntingdon, "		

FEB 7 - 1908

## AGENCIES.

BELOEIL. EAST HATLEY. ST. ARMAND. SWEETSBURG.  
 BISHOP'S CROSSING. HOWICK. ST. CHRYSOSTOME. THETFORD MINES W.  
 CLARENCEVILLE. IBERVILLE. ST. FELIX DE VALOIS. UPTON.  
 DIXVILLE. LACOLLE. SCOTSTOWN. VALCOURT.  
 EAST BROUGHTON. PHILIPSBURG. STANSTAD.

## CORRESPONDENTS.

CANADA—Bank of Montreal and Branches—Molsons Bank—Canadian Bank of Commerce.  
 NEW-YORK—Corn Exchange Bank. LONDON, Eng.—Nat'l Bank of Scotland.  
 " Knauth, Nachod and Kulno. " " Credit Lyonnais.  
 " National Park Bank. EUROPE—Credit Lyonnais.  
 BOSTON—National Shawmut Bank. ASIA—Hong Kong and Shanghai Banking Corporation.  
 PORTLAND, ME.—First Nat'l Bank. AFRICA—National Bank of South Africa, Limited.  
 ALBANY, N.Y.—N. Y. State Nat'l Bank.  
 CHICAGO—Continental National Bank.  
 SPOKANE, Wash.—Exchange Nat'l Bank. ROUMANIA—Bank of Roumania, Ltd.  
 MINNEAPOLIS, Minn.—First Nat'l Bank.

ACCOUNTS SOLICITED.

# Dominion Line Royal Mail Steamships

## WEEKLY SAILINGS:

IN SUMMER—Montreal and Quebec to Liverpool

IN WINTER—Portland to Liverpool, calling at Halifax Westbound.



THE Fleet is headed by the S.S. "CANADA," one of the fastest steamers in the Canadian service, having made the passage between Great Britain and Canada in 5 days, 23 hours and 48 minutes.

The S.S. "CANADA"  
and S.S. "DOMINION"

Have very fine accommodation for First Class Second Class and Third Class passengers.

## To Europe in Comfort at Moderate Rates

By the following Steamers:

S.S. "OTTAWA" (formerly the White Star Line S. S. "Germanic"),

S.S. "KENSINGTON" & S.S. "SOUTHWARK."

These steamers carry only one class of cabin passengers, namely, Second Cabin, to whom will be given the accommodation situated in the best part of the vessel. This accommodation includes Promenade Decks, Smoke Rooms, Ladies' Rooms, etc. all amidships, and meets the requirements of that section of the travelling public, who, while wanting the best the steamer affords, do not care to pay the higher rates demanded for such in the ships having two classes of cabins.

## NEW STEAMERS

R.M.S. "ALBERTA"

R.M.S. "ALBANY"

Building at Harland & Wolff Company Ltd., Belfast.

These steamers will be the largest and finest steamers sailing from Montreal and of high speed. Their size will be 14,000 tons, triple screw.

For all information as to passage or freight apply to local Agents, or to

**DOMINION LINE OFFICE**

17 St. Sacrament St., Montreal

or 53 Dalhousie St., Quebec.