

FAVORITE

FRESH

MELODIES

ARRANGED IN BRILLIANT STYLE WITH

Introduction & Variations,

FOR THE

PIANO FORTE,

- Nº 1. OH! LEAVE ME TO MY SORROW.
 . 2. THE SOLDIER'S GREETING.
 . 3. THE HARP THAT ONCE THROUGH TARA'S HALLS, AND FLY NOT YET
 . 4. GO WHERE GLORY WAITS THEE AND LOVE'S YOUNG DREAM.
 . 5. THE BARD'S LEGACY.
 . 6. MY LODGING IS ON THE GOLD GROUND.

38 cent

by

WILLIAM VINCENT WALLACE.

38 cent.

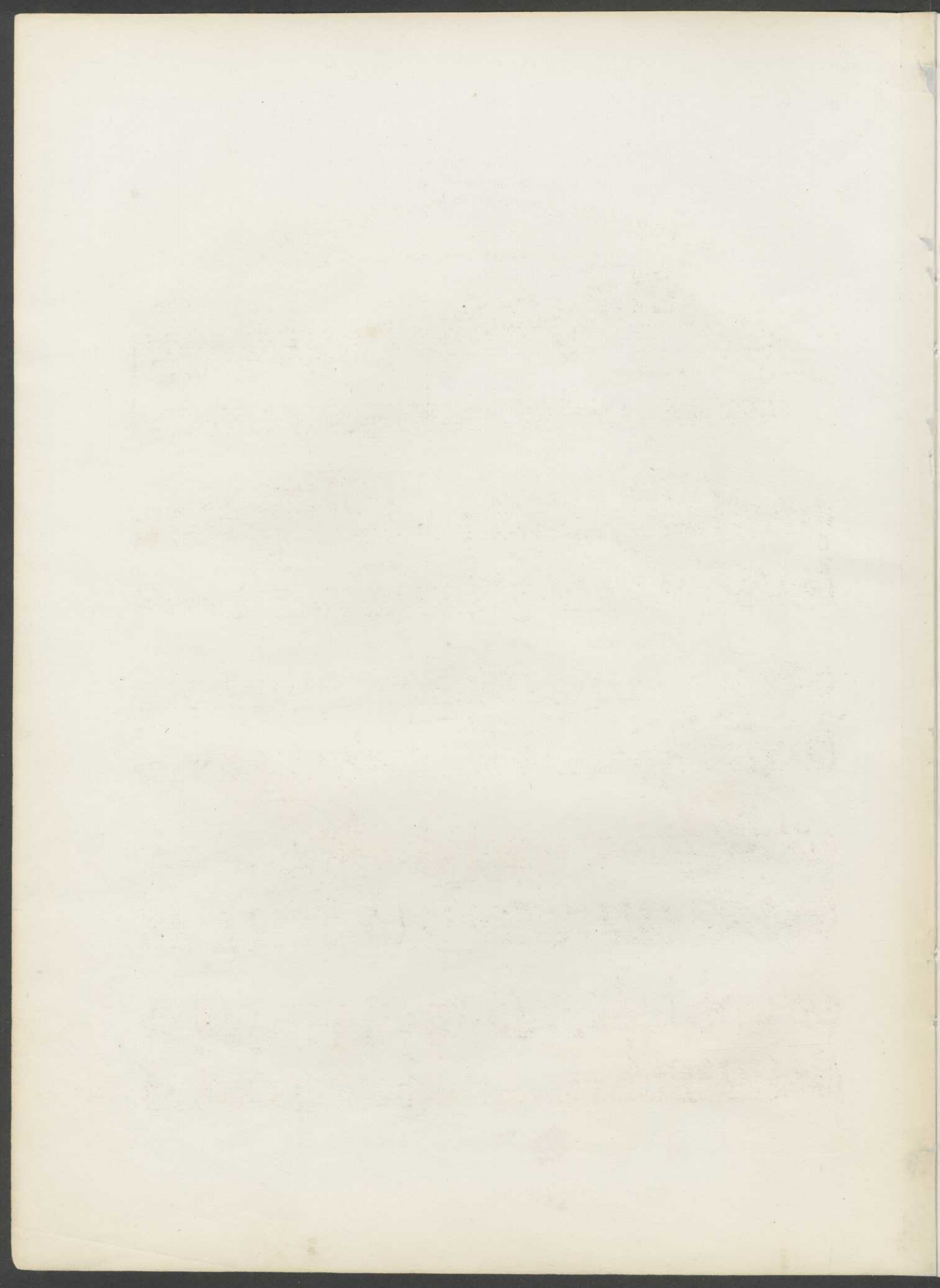
NEW YORK

Published by WILLIAM HALL & SON, 239 Broadway opposite the Park.

BOSTON.

PHILADELPHIA.

GEO. P. REED & CO 17 Tremont Row. EDWARD L. WALKER, 160 Chestnut Street.



786.2
W1876F
1850
HVS-ETR

IRISH MELODY
"MY LODGING IS ON THE COLD GROUND."
OR
"BELIEVE ME IF ALL THOSE ENDEARING YOUNG CHARMS."

W. V. WALLACE.

ALLEGRO
f ma Leggeriss.

Ped. * *p* *Marcato.*

Ped. * *p*

Dolente.

f *Ped.* * *ff* *fp*

604806

ANDANTE CON MOLT'ESPRESS.

Cantando. *mf*

p

Dim. *pp* Dol. Ped. *P*

Ped. *

Tenermente. *pp* Dim.

CON GRAZIA.

Stringendo. *f* *ff*

Martellato *ff* DIM.

f CADENZA VELOCISS.

ALLEGRO.

f SHERZANDO.
Ped. * Ped. *

f
Ped.

>

mf Gioso. Poco rall.

In tempo. *ff* > >

5^a



5^a



5^a PRESTO.



5^a



ff *p* E CON GRAZIA.

This system contains the first two measures of music. The right hand features a melodic line with slurs and a fermata over the first measure. The left hand provides harmonic support with chords and single notes. The dynamic marking *ff* is present in the first measure, and *p* E CON GRAZIA. is written above the second measure.

Gres. *f*

This system contains the next two measures. The right hand continues the melodic line with slurs. The left hand has chords and single notes. The dynamic marking *f* is present in the second measure, and the marking *Gres.* is written above the first measure.

This system contains the next two measures. The right hand continues the melodic line with slurs. The left hand has chords and single notes.

This system contains the next two measures. The right hand continues the melodic line with slurs. The left hand has chords and single notes.

ff *p* E CON GRAZIA.

This system contains the final two measures of music on the page. The right hand features a melodic line with slurs and a fermata over the first measure. The left hand provides harmonic support with chords and single notes. The dynamic marking *ff* is present in the first measure, and *p* E CON GRAZIA. is written above the second measure.

Musical notation for the first system, featuring a treble and bass clef with various notes and dynamics. The treble clef has a melodic line with slurs and a crescendo hairpin. The bass clef has a harmonic accompaniment. Dynamics include *Cres.* and *ff*. A dashed line above the treble clef indicates a slur.

Musical notation for the second system, including a 'Ped.' marking and a star symbol. The treble clef continues the melodic line. The bass clef has a harmonic accompaniment with vertical lines indicating pedaling. A star symbol is placed above the treble clef.

Musical notation for the third system, featuring 'Ped.', 'Velociss.', and 'ff' markings. The treble clef has a melodic line with slurs. The bass clef has a harmonic accompaniment. Dynamics include *Ped.*, *Velociss.*, and *ff*. A star symbol is placed above the treble clef.

Musical notation for the fourth system, including 'Sino al Fine.', 'Ped.', and 'ff' markings. The treble clef has a melodic line with slurs. The bass clef has a harmonic accompaniment. Dynamics include *Sino al Fine.*, *Ped.*, and *ff*.

Musical notation for the fifth system, ending with 'FINE.'. The treble clef has a melodic line with slurs. The bass clef has a harmonic accompaniment. The system concludes with a double bar line and the word 'FINE.' written in capital letters.

