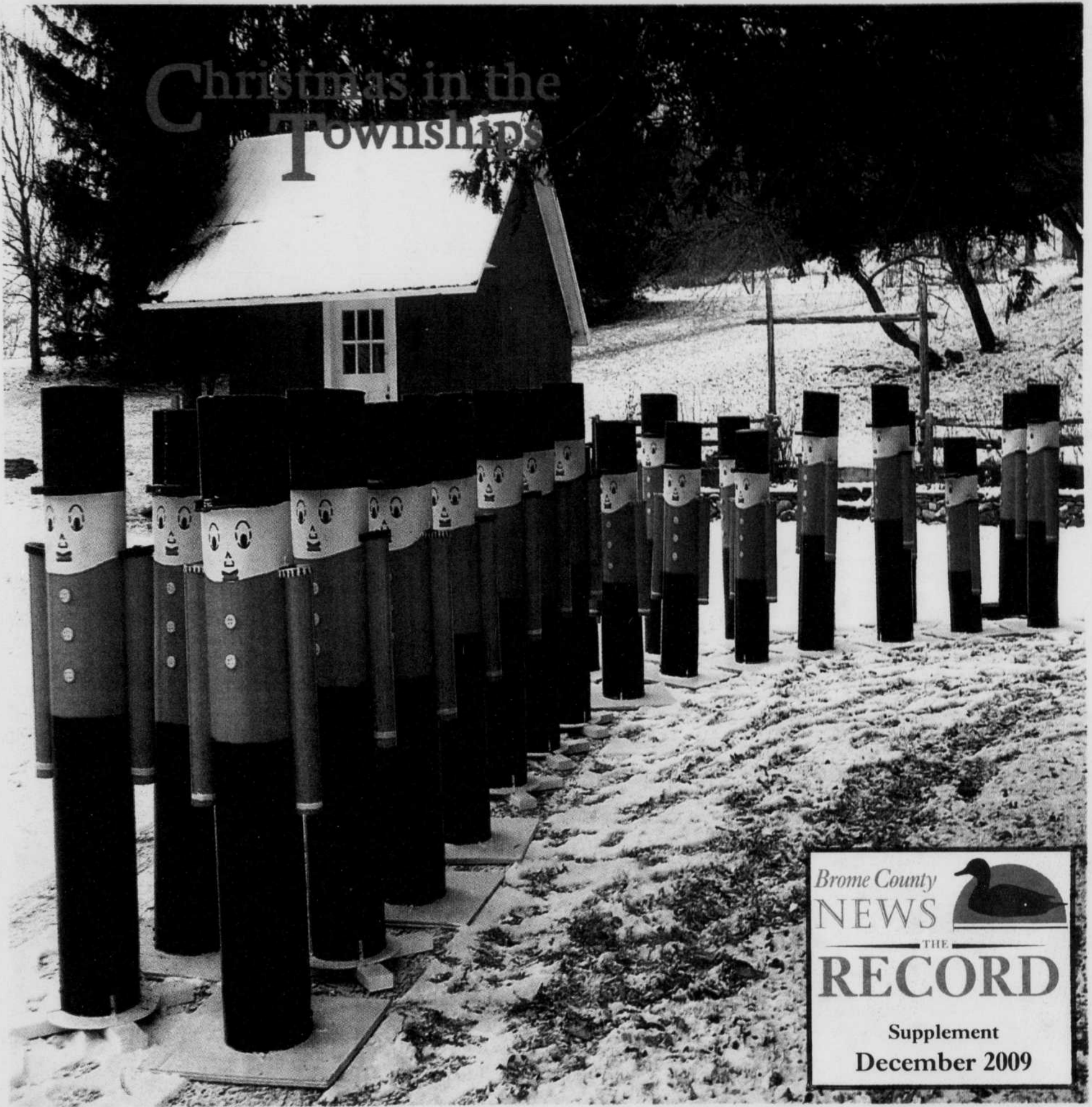


Christmas in the Townships

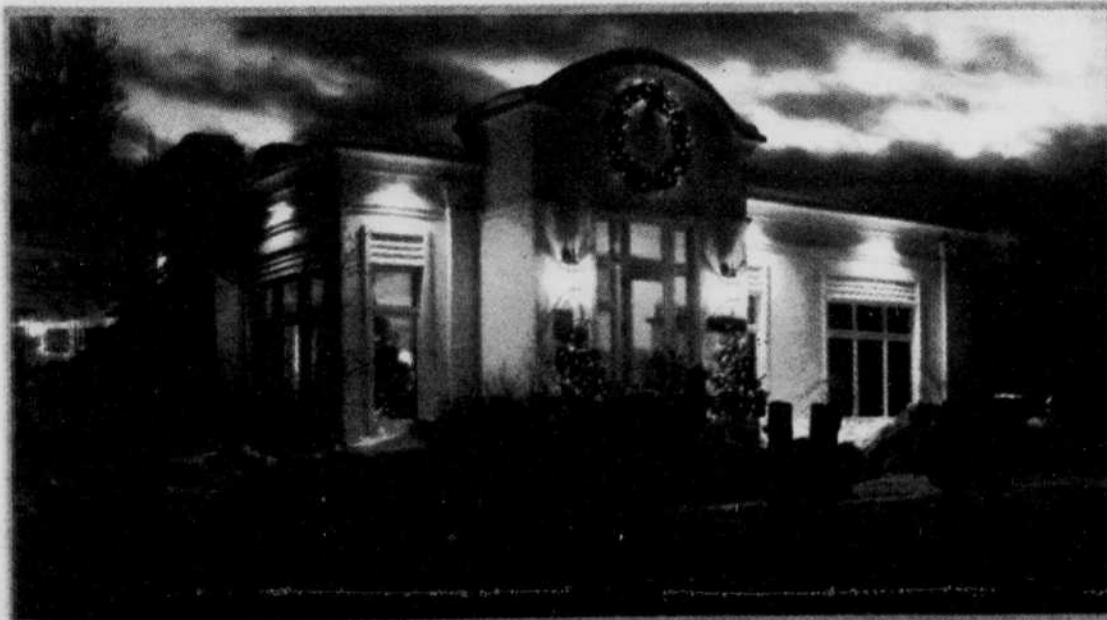


Brome County
NEWS



THE
RECORD

Supplement
December 2009



It's beginning to look a lot like Christmas ...

Christmas Calendar for Sutton:

Dec. 5-23 : A Christmas market where visitors can purchase unique works of local artists and visit Arts Sutton, 7, Academy
Free admission
info@artssutton.com

Dec. 10-11 : Non-perishable goods will be accepted for the less fortunate from 1 p.m. to 4 p.m.
Centre John-Sleeth, 7, Academy
Info : 450-538-1919

Dec. 10 : Ciné-Cabaret presents the documentary film 'Les petits géants', the story of five children in primary school who must accomplish a monumental task. Music from Verdi will be interpreted for young and old alike.
Salle Alec & Gérard Pelletier, 4-C, Maple 2 p.m. and 7:30

Cost \$8
Info & reservations : 450-538-0486

Dec. 11 : 'Match des étoiles' Salle Alec & Gérard Pelletier, 4-C, Maple 8 p.m.
Cost \$10
Info & réservations : 450 538-0486

Dec. 12 : Rider Réunion Adrenaline- Outdoor activities, games and surprises Mont Sutton, 671, Maple
Info : 450-538-2545
www.montsutton.com

Dec. 12 : Distribution of Christmas baskets Centre John-Sleeth, 7, Academy
Info : 450-538-1919 (CAB de Sutton)

Dec. 12 : Christmas Holiday storytelling marathon 10 a.m. - 2 p.m. Best storytellers in the village reading Santa's visit is expected Christmas cookies, juice and coffee for parents and grandparents
Info : Lizzy Fontana, pres. 450-521-3328

Dec. 12 : Christmas exhibition featuring the works of four artists: Brigitte Normandin, Myriam Bardoul, Francine Denault and Louise-Andrée Roberge at Atelier Brigitte Normandin, 16-A, Principale Nord Vernissage
Sundays Dec. 13 and Dec. 20 from 2 p.m. to 4 p.m. Studio open
Dec. 12-13, and Dec.19 and 20 from 11 p.m. - 5 p.m.
Info : 450-538-3454 | 450-538-8122 | 450-263-5227 | 450-243-5676

Dec. 12 : Magnificent Christmas banquet prepared by renowned chef Main Chalet Mont Sutton
Info : 450-538-2545 | 1-866-538-2545

Dec. 13 : Démo Scooter Alpin, the newest trend in snowsports Mont Sutton, 671, Maple
Info : 450-538-2545
www.montsutton.com

Dec. 13 : Sacrament of Penance Eglise St-Simon d'Abercorn, 9, des Eglises Ouest 9 a.m. and also at Eglise St-André de Sutton, 89-A, Principale Nord at 10:30
Info (St-Simon) : 450-538-3113
Info (St-André) : 450-538-3215

Dec. 13 : Decorating the Christmas tree prepared by the Knights of Columbus in the School gymnasium of Ecole Sutton School 19, Highland 12:30. Santa will arrive at 2 p.m. to hand out treats to children 0 - 8. Also sleigh rides.
Free admission, everyone welcome.

Dec. 16 : Free carriage rides in the village offered by the local economic development group CDÉS 11 a.m.-1:30 p.m. leaving from the parking lot behind the post office in Sutton. Horses and riders provided by Westina Stables owned by Ian Westover.
Free admission
Info : 450-538-8455 | 1-800-565-8455

Dec. 17 : 50th anniversary celebrations for Mount Sutton, Official opening of the hills. 9 a.m. - 4 p.m.
Info : 450-538-2545, 1-866-538-2545
www.montsutton.com

Dec. 17 : Opening of the History of Communications Museum 30-A, Principale Sud
Info : 450-538-3222

Dec. 20-24 : Christmas Camp, vacation program of activities for five days Mont Sutton, 671, Maple
Info : 450-538-2545
www.montsutton.com

Dec. 20 : World snowboarding Day A day of activities on the mountain Mont Sutton, 671, Maple
Info : 450 538-2545
www.montsutton.com

Dec. 20 : Christmas carols Grace Anglican Church, 52, Principale Sud 3 p.m.
Free admission
Info : Tim Smart 450-538-8108

Dec. 23 : Candlelight Service Olivet Baptist Church, 7, Maple 7 p.m. Hot chocolate following the service
Info : Alex Lobach 450-538-5225

Dec. 24 : Family mass Eglise St-André de Sutton, 89-A, Principale Nord 5 p.m.
Info : 450-538-3215

Dec. 24 : Christmas mass Eglise St-Simon d'Abercorn, 9, des Eglises Ouest 7 p.m.
Info : 450-538-3113

Dec. 24 : Bilingual Christmas Eve Service Calvary United Church, 6 Maple Street 6, Maple bilingual (English and French) family service of music / Christmas carols Bible readings about the nativity; special children's time with a story for the young and the young in heart
7pm - Everyone most welcome: Free
Info : 450-538-0530
gboothsutton@aol.com



Welcome to our Christmas in the Townships, a special supplement.
We are hoping that our readers will enjoy our annual celebration of the holidays.
We hope readers in Montreal and elsewhere will discover the beauty and charm of the Townships.
We would also like to thank all our clients for giving us the opportunity in meeting your advertising needs.
Happy Holidays.
Lynda & Diana

Christmas Promotion Sale



Priced for every budget

artopex
l'art et la manière



Hours: Mon.-Fri. 8:30 a.m.-5:30 p.m.
Sat. 9:00 a.m.-noon

113, rue Albert, Cowansville Tel.: (450) 263-2748

Season's Greetings to all!

Notaires
Conseillers juridiques

Notaries
Title Attorneys

GALLAGHER GAGNÉ NOTAIRES INC.

35 Victoria St., Knowlton
297 Principale St.,
Mansonville

Tel.: 242-1555
legal@notarius.net

THE GIFT OF BEING THERE

24 hours a day
7 days a week
365 days a year

Across the world

Across the street

Canadian Red Cross
Québec Division
www.redcross.ca

1 800 JYCROIX
(1 800 592-7649)



... it's the most wonderful time of the year

Dec. 24 : Christmas Eve Service Grace Anglican Church, 52, Principale Sud 7 :30 p.m.
Free admission
Info : Tim Smart 450-538-8108

Dec. 24 : Christmas mass on the mountain Main Lodge Alt 400m, Mont SUTTON, 671, Maple 9 p.m.
Free admission
Info : 450-538-3215

Dec. 24 : Midnight Mass église St-André de Sutton, 89-A, Principale Nord 11 p.m.
Free admission
Info : 450-538-3215

Dec. 25 : Christmas Mass église St-André de Sutton, 89-A, Principale Nord 10 :30 a.m.
Info : 450-538-3215

Dec. 25 : Christmas Day Service Grace Anglican Church, 52, Principale Sud 10 :30
Free admission
Info : Tim Smart 450-538-8108

Dec. 27-31 : Christmas Camp 2 Five days of activities Mont Sutton, 671, Maple
Info : 450-538-2545
www.montsutton.com


Dec. 31 : New Year's Mass église St-André de Sutton, 89-A, Principale Nord 5 p.m.
Free admission
Info : 450-8-3215

Dec. 31 : New year's Eve dinner and dance 5-course dinner, dancing, champagne Auberge des Appalaches. This year's theme is: « La Virée Bleue », the person sporting the most 'blue' will receive a gift (Cost :\$49 + taxes & service). 234 Maple.
Info & Reservation : 450-538-5799
www.auberge-appalaches.com

Dec. 31 : New Year's Eve disco Hôtel-motel Horizon, 297, Maple 8 p.m. - closing
Info: 450-538-3212 / 1-877-538-3212
www.hotelhorizoninc.com



Season's Greetings!



Helen Labrecque
Affiliated Real Estate Agent
Cell: 819-572-1070
hlabrecque@sutton.com

Looking for properties in the Eastern Townships?

I have lots to offer in:

- Lennoxville
- Bury
- Waterloo
- Cookshire-Eaton
- Lake Nick
- Waterville
- North Hatley
- Sherbrooke
- Windsor

Please call or e-mail me and let me help you find your country home or the home of your dreams.

Sutton 819-823-7474
Group Sutton de l'Estre Courtier immobilier agréé

THE EXPERIENCED REAL ESTATE AGENT



Are you looking for a gift idea?

Think of the warmth & comfort of fur!


- Ready to wear or custom made
- Leather
- Suede, reversible sheepskin
- Repairs, remodelling (recycling)
- Furs
- Storage and cleaning

Vast choice of accessories and leather gloves



FOURRURES Denis Hivon
69, rue Drummond, Granby
372-3434
www.denishivonfourrures.com

Speak right from the heart.
A donation in memory of a loved one is a gift of hope.
It takes just a few minutes.
A card will be sent to the bereaved family as a token of your sympathy and generosity.
1 888 473-4636



HEART AND STROKE FOUNDATION OF QUEBEC

PADDIE'S BOUTIQUE

BIG XMAS SALE



On Dasher,
On Dancer,
On Donner,
On Blitzen...

Merry Christmas
Pattie, Pauline, Micheline & Gail
286-A Knowlton Rd., Knowlton (450)243-6413

Christmas in Brome Lake ...

By Philip A. Godin

It's Christmas time, the time of year when the one thing that everyone is running around trying to capture is that special warmth that comes when family, friends and neighbours gather to share in the best of times.

That feeling, that comfort that comes with the peace of Christmas, is precisely what the residents, community organizations, artists and merchants of Knowlton have managed to place within everyone's tangible reach.

In one of Canada's most enchanting villages, the crisp Christmas season air is filled with the scents, flavours, sights and melodies that have captivated visitors here for decades.

The reason Knowlton is so special is as simple as it is commanding; the people of Knowlton and sister Brome Lake villages actually live in and enjoy the country milieu they have created. Knowlton exudes the country charm that most towns only dream of.

Spending time in this corner of the Eastern Townships at Christmas, as long or short a time as that may be, is like taking a stroll through a living fairyland that usu-

ally only adorns Christmas cards.

As of mid-November, the town is abuzz with the anticipation of the changing season. There are concerts to attend, art galleries to visit, bake sales to enjoy, parades to watch, galas to be seen at and by far the most captivating shopping experience anyone will ever have.

Here's a sample of what is coming your way this season

First and foremost, Knowlton and the Brome Lake area have a complete array of affordable and very comfortable hotels, inns, B&Bs, excellent restaurants and cafés that rival just about everything you'll find anywhere, so staying overnight is both easy and

inviting.

One thing that stands out here is the community spirit that pervades so many facets of the country life, made easy.

You can purchase a fresh Christmas wreath that profits the local Historical Society, a Christmas tree that supports the local hockey team, a classical concert that develops amazing young talent, a gala ticket that encourages the local theatre, even subsidize the local food bank while paying library fines.

It's as if by the mere fact of living here, as if for simply having the good fortune of enjoying this great community, people want to give back, support, encourage and develop.

Chenil Lac Brome Kennel

Meilleurs Voeux
Seasons Greetings

GRATUIT!
Période de jeux et d'exercices!

FREE PLAYTIME!

Pension / Boarding
Bain / Bath
Condos pour chats / Cat condos

450-243-5587
www.cclacbrome.com/kennel/

Community Togetherness

The local Food Bank counts on donations and the Pettes Memorial Library. The Province's oldest fee rural library helps out by allowing patrons to convert late fines into food donations.

Here is Knowlton at its best; one charitable organization supporting another in times of need. Fines due or not, townsfolk can drop off food donations at the front desk until Dec. 30, on Knowlton Road corner of Bridge.

The mainstay of food donations is however co-ordinated by the Lion's Club whose food drive runs year long. At Christmas, they deliver Christmas baskets to about ninety families, each containing hams, chickens, breads, canned goods, sundries and a few toys.

Love the shopping but hate the wrapping? A \$2 gift-wrapping service that supports both Knowlton elementary schools will be available at 30 Lakeside in Knowlton. Possibly the best two bucks you'll spend this Christmas.

This is a chance to give someone else an equal opportunity at gift-wrapping. While you're there, check out the Christmas window that displays a variety of gift ideas which both support local merchants while providing excellent answers to shopping challenges.



DAVID ANDERSON

And a carrot for a nose.

Happy Holidays!

At this time of year we would like to take the opportunity to wish our valued clients a very Healthy & Prosperous Holiday Season

IGA Food is everything
Sutton

Home

IGA Sutton 44,
rue Principale Nord,
Sutton
450-538-2211



PHOTO CREDIT

LJH TRANSPORT
ENTREPOSAGE
DISTRIBUTION

ANTHRACITE
The Heating Solution Easy as 1,2,3

1. Just add coal to hopper every 2-3 days
2. Set the desired temperature
3. Relax and enjoy the comfort of quality coal heat

Economical and efficient
No pollution (no creosote)
Automatic feeder delivering
an even heat

We Deliver!

LJHTRANSPORT.COM
1074 Knowlton Road, West Brome, QC 450-263-6500
Lun-Ven 7:00-17:00 Sam- 9:00-13:00

Over the river and through the woods

By Jen Young

Nothing beats bundling up in thermal gear for an afternoon of outdoor fun over the holidays and coming in, rosy-cheeked and invigorated, to a hot cup of cocoa or apple cider.

For the outdoorsmen and women who prefer a little torque, this season will be a memorable one for the snowmobile fan in us all. With more than 1,842 kilometers of trails available throughout the Townships, jumping on a ski-doo will once again be a sport of choice for many.

To get an idea of the Townships' trails, check out www.easterntownships.org (keyword snowmobile), or call 1-800-355-5755.

For those who don't own their own snowmobile, there are three locations where people can rent and experience the sport.

In the Valcourt area, just off route 243, enthusiasts can jump on a rented ski-doo for the day to pay homage to

snowmobile founder Joseph-Armand Bombardier at the Centre de Motoneige. Bombardier invented his very first snow vehicle in the 1920s and his first snowmobile in the 1950s. Families can reserve one of the 25 snowmobiles available for either an hour, or for a day. Nearby is Bombardier Recreational Products (at 9060 rue de la Montagne; call 450-532-2262), where snowmobiles are still manufactured today. Guided tours reveal how the various models are assembled. With a deposit renters can jump on a skidoo, hop on a trail, and head out for an outdoors adventure for an hour, an afternoon, or the full day.

Those in the Sherbrooke area can always visit Evasion Hors-Piste, at 5020 Boul. Industriel (1-866-899-3595), where 10 machines are waiting to be rented.

Evasion offers the convenience of access to all downtown Sherbrooke restaurants and motels, as well as storefront access to the Skidoo trail. Many also appreciate the option to

rent a complete snowmobile suit — and the surveillance in the parking lot eases customers' minds as they are out enjoying the fresh air.

Closer to Montreal by half-an hour, a deposit at Centre Mecanique Magog gives you a choice of eight different machines. The Orford Mountain views are a treat. The centre's trails not only offer a chance to get some fresh air, but the mountainside location offers a scenic trip.

The centre is at 9 Bourque Boul. call 819-868-2919.

If you're looking for a bit of a mix of activities at a one-stop spot, try Au Diable Vert. It's a year-round outdoor activity centre located in the heart of the Appalachian Mountains.

Located about an hour and a half from Montre-

al at 169 chemin Staines in Glen Sutton, the site is where plenty come for a day of snowshoeing or cross-country skiing for \$9.

You may get lucky and get to experience a raclette dinner and snowshoeing by the light of the moon.



RECORD ARCHIVES

O what fun it is to ride in a one-horse open sleigh

One of the highlights of winter is a sleigh ride with friends and family, bundled in blankets as you're drawn through fields and woods.

In North Hatley, J. Robidas is happy to oblige locals and tourists with his comfortable 20-passenger horse-drawn carriage pulled by two horses. Relax to the sound of sleigh bells and the serenity of nature as an expert coachman brings you on a memorable tour. To reserve call toll free

1-888-677-8767 or (819) 563-0166

In Brome Lake, David and Gayle Evans are just waiting for the snow to fall so they can begin reserving outings over trails and through the woods. Evans said the experienced escorts are able to accommodate large groups by reservation at \$8 per person groups under 10 for a \$100 minimum cost. To reserve call 450-263-9638 or email evansacres-percherons@sympatico.ca



PHOTO COURTESY OF WESTINA STABLES

Au Royaume du Steak

STEAK HOUSE

"REAL STEAK LOVERS DINE WITH US"

Table d'Hôte starting at **\$13⁹⁵**

Dec. 24:
Open 7 am-8 pm
Dec. 25 - Closed
& Open
New Year's
Day

Our specialty is steak but we have a large variety of meals to suit everyone's taste!

Reservations appreciated

Breakfast served till 2 p.m. on weekends

300 Lewis St. W. (facing the arena) Waterloo 539-0811

GREAT GIFT Ideas

Discover our dermo-cosmetic universe

- * Perfumes
- * "Dans un jardin" products
- * Beauty products
- * Gift wrapping
- * Body products
- * Gift certificates

With a beauty consultant to serve you Merry Christmas on behalf of all our team

LA ROCHE-POSAY

MAZELLE

ELANCYL

IOUVIANCE

ROC

GALÉNIC

Dans un jardin

COVERGIRL

EAU THERMALE Avène

L'ORÉAL PARIS

REVLON

VICHY

ADERMA

reversa

NeoStrata

DUCRAY

PIERRE MARZIALI, PHARMACIST

affiliated to **Familiprix**

408 South St., Cowansville
450-263-2171

These wonderful things are the things ...

50th Anniversary Mont Sutton

A FAMILY'S GIFT TO SUTTON

Mount Sutton tells the tale of a remarkable family that was, and continues to be, a driving force in the development of an entire region of Quebec.

The Boulanger family moved to Sutton in 1945. A trained administrator working in the dairy industry, Harold Boulanger founded Sutton Dairy Products with two partners, Charles Dionne and Albert Deslauriers. A key enterprise until 1980, specializing in the production of butter, skim milk powder, protein and pasteurized chocolate milk, Sutton Dairy Products was typically very active for four to five months during the summer, but in the winter, was

forced to lay off employees. This situation led the owners to begin thinking about a business that would keep their personnel busy during the winter months. At that time, people were wilderness skiing at Sutton, more specifically on the North face of Mohawk Lake, the mountain next to the actual resort. During the winter of 1946, the young Boulangers began their love affair with the sport of downhill skiing.

CHANGES VOCATION

Boulanger decided to operate the mountain at Sutton. In 1959, François Lévesque, the family's lawyer, advised Boulanger to form a company and buy the land on the mountain, leaving the logging rights to the former owner.

Around this time, Réal Boulanger presented his father with an idea he had been cooking up with his brothers and friends: to open a ski centre at Sutton mountain. After some reflection,

Harold agreed to the idea and took charge of the financing while his children looked after the rest. The four Boulanger brothers, Réal, Robert, Benoît and Hercule, began surveying, studying, marking out and clearing the trails. From that moment on, Réal's

visionary skills would prove to be a vital asset: he wanted a unique mountain, that respected the environment so he decided to leave trees on the trails so people could enjoy skiing under a canopy of branches. Réal wanted to use the natural elements the mountain had, to preserve nature and provide a ski experience in a natural environment. Trees were even planted on some trails! The glades became the hallmark of the resort and won awards for the environmentally friendly hill.

Work began on the mountain in June 1960 and on the chalet in September of the same year.

After considerable effort Boulangers opened the ski station on Dec. 17, 1960. Four inches of snow had fallen the day before, to the delight of everyone involved, so the opening took place under a blanket of white!

FROM DREAM TO REALITY

In 1959, François Lévesque, the family's lawyer advised the Boulangers to form a company and buy the land on the mountain, leaving the logging rights to the former owner. Réal, Robert, Benoît and Hercule, along with several experts, surveyed the entire mountain to plan the runs. They initially laid out four runs as well as scouted out locations for the chairlifts, ski lodges and future runs.

On April 15, 1960, a Mr. Zigmann, owner of Sun Valley in the Laurentians and importer of the reliable Mueller chair-

lifts, inspected the mountain with Réal and discovered fresh powder on the runs. Excited by the sight of all that snow, he said to Réal, "If you buy the chairlifts from me, I'll trade the equivalent of my commission for shares in Mont Sutton Inc."

RESORT TAKES SHAPE

Harold exerted pressure on other equipment suppliers to buy shares in Mont Sutton Inc. This money was used to clear the trails. During this period, he also convinced a group of doctors from Cowansville to invest in the project. Thanks to the doctors' financial participation, they were able to build the Main Lodge. These doctors also ran the clinic at the ski hill.

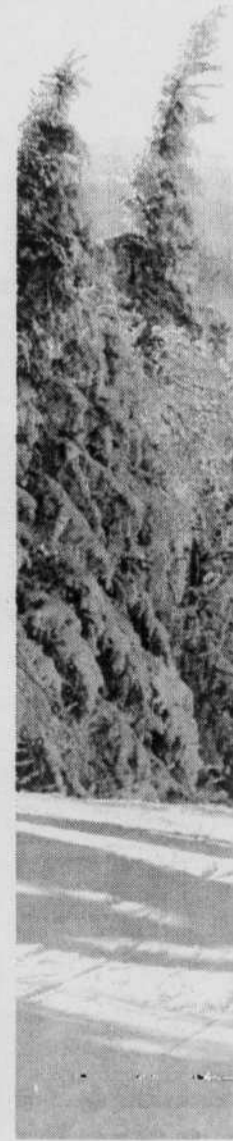
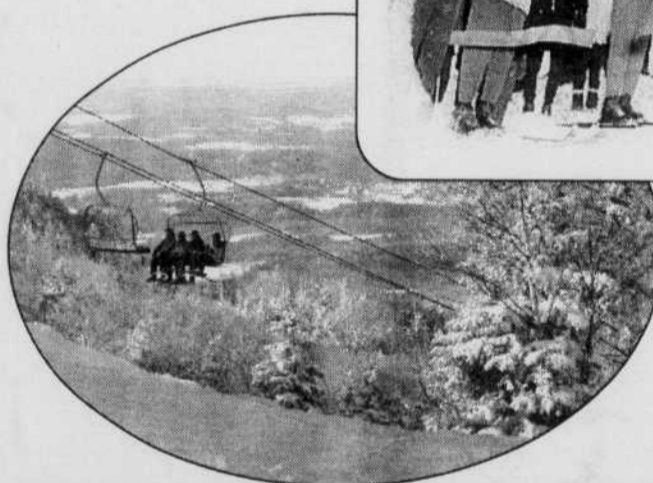
The Boulangers also had to think about building a road to the mountain. Work on the road began in June 1960 and on the lodge a few months later. Sutton's president Benoît Boulanger described the first chairlifts on the mountain: "After clearing the Sutton-1k run, the surveyors marked out where the chairlift manufacturer wanted to put the cement bases. It was then up to Réal to supervise the work. Mr. Zigmann distributed the plans and oversaw the work."

Thanking all our clients
For their support
Season's Greetings



Diane Daunais 450-378-7585
Johanne Coiteux 450-378-4890
Luc Côté 450-378-0884

NATIONAL BANK FINANCIAL



Greetings
of the season

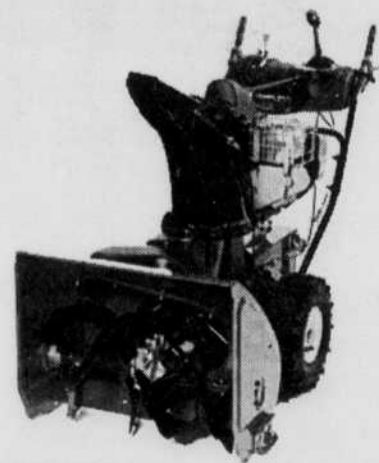
Wishing you a very
Merry Christmas
and a
Happy New Year



227 Knowlton Rd.

242-1122

MOTOSPORT G & L ENR.
A MACHINE DESIGNED AND BUILT TO PERFORM
WHEN CONDITIONS DON'T PLAY NICE



Happy Holidays to all our cherished customers & friends
202, Route 202, Stanbridge Station, Québec J0J 2J0
Tel.: 450 248-3600 Fax: 450 248-0740
SALES AND SERVICE - LAWN GARDEN EQUIPMENT - MOTORCYCLE AND ATV

... we remember all through our lives

THE DAY BEFORE OPENING

Everything was finally ready for the opening of the resort on Dec. 17, 1960. The workmen had completed the installation of the T-bar; a small refuge was ready above #11 Chairlift. In the 500-square-metre Main Lodge, Alt. 400 Metres, several services were available: a cafeteria that is still in operation today, a ski school and boutique directed by Jean Lessard, the Canadian Slalom Champion in 1960, as well as a ski rental and repair shop in the basement. In addition to a daycare supervised by Lucille, a medical clinic was also located on the second floor equipped with X-ray and material for making casts. What's more, Sutton reinforced its reputation as an innovator by ensuring the security of skiers with a team of St. John's Ambulance patrollers.

OPENING DAY

To everyone's delight, four inches of snow fell on the evening of Dec. 16. The opening took place the following day under a blanket of snow. Glen Brown and Heward Graftey, respectively the provincial MNA and federal MP at the time, were present, as well as several ski celebrities including the Canadian Ann Heggtvelt, a gold medal winner in Slalom at the 1960 Olympics in Squaw Valley.

THE FIRST SEASON

"On Christmas Day, 1960, only the T-bar was working because the chairlift wasn't ready yet. We had to work day and night to get the lift ready for Jan. 5," recalls Benoît Boulanger. On Feb. 16, 1961, a Saturday evening marked by the first Sutton Ski Club activity (a dinner and torchlight run), it was raining cats and dogs. Réal was forced to close the resort. Benoît continues, "That prompted us to take stock of the situation and provide additional guarantees at the bank to cover the short term." The re-

sort remained closed four long weeks before re-opening until April 23. In the end, the season was so successful that Mont-Sutton issued its first shareholder dividends.

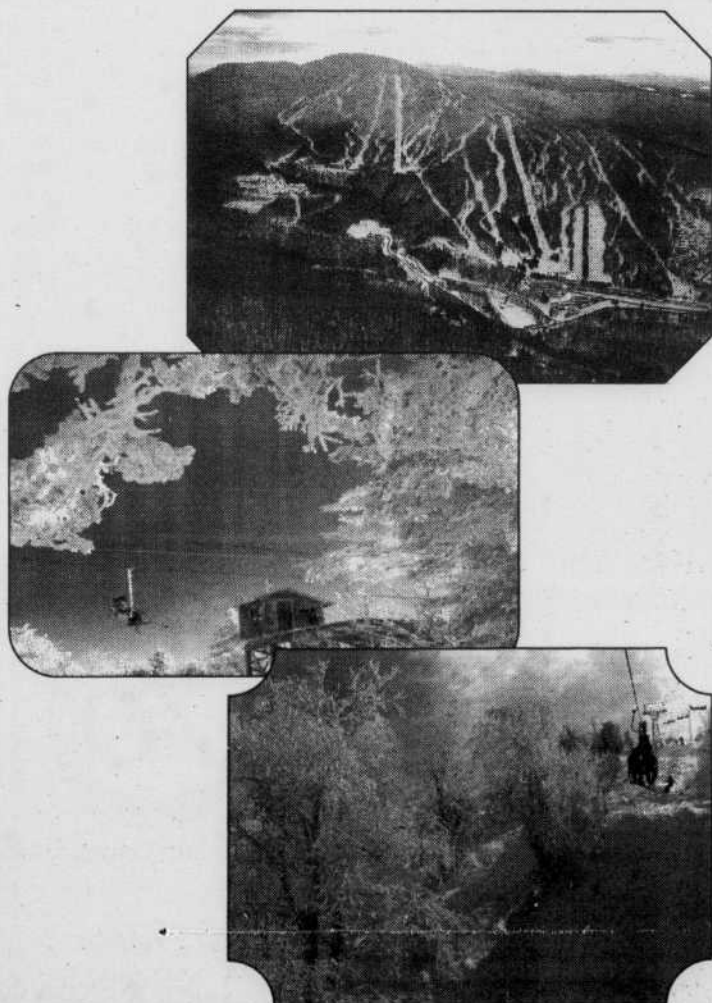
Commenting on the success of Sutton's first ski season, a magazine wrote: "On some Sundays, you could count some 2,000 skiers on the hills ...One of the reasons for Sutton's popularity was that it received a total snowfall of 143 inches, allowing skiers to enjoy their sport right up until April 23, well after the sun had laid bare all the hills in the Laurentians."

A SUCCESSION OF WINTERS

Réal pursued the development of his mountain with the firm Sno-engineering Inc. "The neighbouring ski resort at Mont Echo closed down in 1978 and its equipment and double Muëller lifts were up for sale. Sutton's bid was accepted. In 1983, following Réal's death, Robert took over the resort's reins and continued his brother's work. In 1985, Canada's first detachable Doppelmayr quadruple chairlift was installed, replacing the 25-year-old #11 Chairlift. Improvements continued as Benoît replaced Robert, making him the third Boulanger brother to become president and general manager of Mont Sutton Inc. He promoted his nephew Denis, Réal's son, who was then Director of Marketing, to General Manager. Denis remained in the position until the fall 1997.

In 1990-1991, Jean Lessard decided to retire and sell his boutique and ski school. Guy Duquette, an exceptional young skier and member of the Canadian Exhibition Team at Interski since 1987, offered to continue in Jean's place. Guy founded the Sutton Ski School, today known as the Ski and Snowboard School, recognized throughout Quebec for the quality of its instruction.

PLEASE SEE SUTTON PAGE 21



Christmas Calendar for Mont Sutton

December 2009

YOUR CHRISTMAS PARTY AT MONT SUTTON

From Dec. 12 to Dec. 19

For a Christmas party in a warm environment and to enjoy a delicious buffet prepared by our renowned chef, choose Mont Sutton. An ideal place for your Christmas events! Perfect for corporate groups! Welcome to the

ANNIVERSARY DAY AT \$5 - DECEMBER 17TH

Dec. 17th, 2009

The Mont SUTTON's anniversary is on Thursday December 17th. On this special day, get your day lift ticket for 5\$, the same price than in 1960. Come to wish happy birthday to SUTTON! There will be a day of celebrations with a lot of surprises!

SPECIAL 50TH SEASON CALENDAR

On Dec. 17, 2009

The calendar with all the special activities and promotions for the 50th season will be posted soon... emotions and celebrations to be expected!

CHRISTMAS CAMP

From Dec. 20 to Dec. 31, 2009

Offer your family a ski-vacation filled with holiday-flavoured activities and entertainment. The holiday program par excellence!

WORLD SNOWBOARD DAY

On December 20, 2009

For the first time snowboarders will

have their own internationally designated day, with December 20 being declared "World Snowboard Day". Free activities will animate the mountain to celebrate this new event.

CHRISTMAS AT THE MOUNTAIN

Dec. 25, 2009

Special activities are planned at the mountain on that special day. Surprises for all and, to look forward to, the return of the Christmas Rally

TORCHLIGHT DESCENT

Dec. 27, 2009

Sunday Dec. 27, come watch the torchlight descent of the Club des sports and party at the foot of the hill and at the Bar Le Tucker. On the mountain a breathtaking show and at the bottom a celebration not to be missed

NEW YEAR'S GRAND RENDEZ-VOUS AT THE BAR LE TUCKER !

On Dec. 31st, 2009

Come celebrate the beginning of the New 2010 Year in a warm, authentic and friendly atmosphere, at the Bar Le Tucker.

January 2010

NEW YEAR'S COCKTAIL AT THE MOUNTAIN

Jan. 1, 2010

At noon sharp, come and join us to celebrate the beginning of the 2010 New Year with our traditional New Year's cocktail.

Town of Brome Lake

Come visit our Winter Wonderland.



PHOTO CREDIT: WWW.JLAURENT.CA

Merry Christmas 2009



The Villages of Brome Lake

Bondville, Easthill, Foster, Fulford, Iron Hill, Knowlton, West Brome

scvib@bellnet.ca



Ice Wine Festival

The vineyards of the Wine Route produce a range of products, from sparkling white wines to reds and rosés. One of the jewels of this production is ice wine. Over the years many of these vintages have brought home national and international awards, testimony to the high quality of the product. Making ice wine has this in particular: the grape must be picked and pressed at a temperature equal to or less than -8 degrees Celsius. This process allows the water in the grape to remain frozen and concentrates the sugars. While normally one can produce about one bottle of traditional wine per vine, the freezing of the grapes and the concentration of sugars only gives one glass of ice wine per vine.

To celebrate this unique product, on Jan 23 and Jan. 30, 2010, you are invited to take part in Spotlight on Ice Wines.

You will have the choice of three themes:

The Experience - a five-course tasting menu at the Auberge des Appalaches in Sutton. The emphasis is on the sensory experience of wine. Accessible both in

terms of price and the friendly atmosphere that dominates. A group tasting hosted by a sommelier. Cost: \$75 per person.

The Classic - a seven-course tasting menu at the Auberge & Spa West Brome, in West Brome. Participants will be able to do a tasting with an expert at every table. Hosted by a sommelier and the Chef. Cost: \$95 per person.

The Apprenticeship - a four-course menu.

Accompanied by a chef, participants will cook up a menu they will get to enjoy the same evening washed down with ice wine. Hosted by the Chef. Cost: \$85 per person.

WINE ROUTE HERITAGE

The Wine Route merges with the Townships Trail, which highlights the American and British heritage in the Eastern

Sutton in Brome-Missisquoi. Spread over 120 km of beautiful winding country roads and crossing seven hamlets and villages considered the most beautiful in Quebec, the Wine Route leads to 16 wineries. Discover the architectural heritage and natural landscapes, the legacy of the first people to settle the Townships.



Brome-Missisquoi has six towns, which display the Townships Trail logo: Bedford, Cowansville, Frelighsburg, Lac-Brome, Stanbridge East and Sutton. Visitors will be able to learn more about museums, heritage societies, exhibitions and history through the interpretation panels.

Wine Route in winter adds possibilities

For a unique holiday experience and special gift purchase, visit the Christmas Market on the Eastern Township's Wine Route.

What started off as a seasonal artisans' market at L'Orpailleur vineyard near Dunham in the Eastern Townships has grown to include five other wineries, an orchard, a tree plantation and speciality stores, galleries and restaurants in Dunham, Sutton and Lac Brome and - to add a big bow on top - there's Knowlton's Festival of Lights, Sutton's annual Country Christmas celebrations, Mount Sutton's 50th anniversary celebrations, musical performances, art shows, curling, skiing, skating and weekend hotel specials.

The Wine Route, most heavily traveled from May to October has extended through winter for locals and visitors alike.

Each year the Christmas Market grows bigger and does better.

Although the main thrust of the market is to attract visitors from outside the immediate region, offering a peaceful, fun-filled way to prepare for Christmas without parking hassles and big crowds, locals are also sure to enjoy taking advantage of the specials and ambiance.

Of the 12 vineyards on the wine route, six will remain open to visitors during the holidays - Domaine des Côtes d'Ardoise, Les Trois Clochers, L'Orpailleur, and Les Blancs Coteaux, has joined the group, adding even more variety.


In addition to a range of wine selections, shoppers can choose from a variety of handcrafted gifts, including jewelry, toys, textiles, pottery, Christmas decorations, hand made calendars, recycled objects, cards, candles and sculptures, at prices ranging from \$10 to \$200.

The Christmas Market on the Wine Route section at www.brome-missisquoi.ca is a comprehensive guide to all that's happening this season in the region. The listing includes all participating establishments and their specialities in Dunham, Sutton and Lac Brome, hotels and restaurants, outdoor sports activities, musical and theatre performances, church concerts and worship services.

-Tourisme Estrie


 LA BOHEME WISHES EVERYONE A JOLLY HOLIDAY SEASON AND A HAPPY NEW YEAR
 2446A LAKESHORE ROAD, CLARENCEVILLE 1-888-926-4363
www.la-boheme-crafts.com



montsutton.com



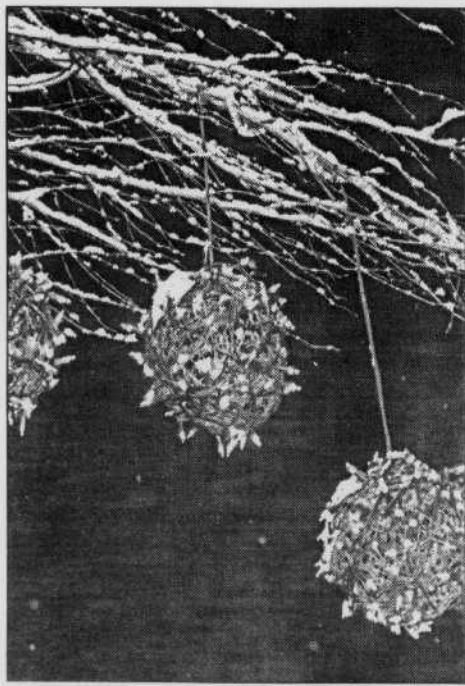
SUTTON

LIKE NOWHERE ELSE!

5th ANNIVERSARY DAY



THURSDAY DECEMBER 17, COME AND SKI AT THE PRICE OF YESTERYEAR AND EXPERIENCE WINTER LIKE NOWHERE ELSE!



INSURANCE

B.W. DRAPER ASSURANCE INC.



60, rue Principale
Bedford (Québec)
J0J 1A0

Téléphone 450.248.3351
Sans frais 800.363.4545
Télécopieur 450.248.4277

www.bwdraper.qc.ca



Happy Holidays ~ Joyeuses Fêtes

Small town charm makes for great presents

There is a lot to be said about Christmas shopping, and a lot has. Big stores urge big spending, leading to even artistry itself.

The tiny village that spreads out from a hilltop like the picture-perfect backdrop for a movie, is home to dozens of artists who draw inspiration from Pinnacle Mountain and the bucolic surroundings. Each fall, the village centre becomes the largest outdoor gallery when artists converge to practise their craft and exhibit their works.

Art is such an integral part of the fibre of Frelighsburg, the municipal building seconds as an art gallery for for the dozens of artists who live and work in there.

Look around and you may find authentic African bead jewellery, organic herbs and creams, gourmet jellies and massage fondants, stained and fusion glass... everything is original, clever and desirable.

That's when a few other Frelighsburg secrets step in. The Aux Deux Clochers restaurant is a prize in itself.

With expansive windows overlooking rue Principale as it crosses le pont Adélar Godbout, this is one of those restos where menus are considered superfluous by the locals. By definition, "locals" are those willing to travel as far as 50 kilometres to enjoy the chef's culinary prize, the reputed Club Sandwich. The best.

Visit some of the local galleries and shops but be sure to stop at the Galerie Dupont, a unique printing workshop in January, where visitors have an opportunity to watch artist-owner Michel Dupont demonstrate traditional print making.

The originals are created on the premises using an Intaglio press that embosses the handmade acid-free cotton based papers, allowing paints and dyes to be applied as if on a landscape. The finished product is remarkable, a statement

backed up by the fact that the artist's work has been displayed at the Museum of Modern Art in New York.

If you're looking to pick up a truly genuine gift straight from the hand that made it, a four kilometre drive from Frelighsburg to 150 Richford Road will bring you to the Domaine Pinnacle, Quebec's premier ice apple cider producer.

The cidery's original building, located on Mount Pinnacle, has been used as a homestead as well as a bootlegger's hide-out during prohibition.

An interesting architectural feature is the octagonal central tower that served to watch the 45th parallel's Quebec-Vermont border only meters away.

As soon as you step from your car into an apple orchard whose trees still bear frozen fruit, expect to be greeted by Tuck, the family's golden retriever, who is as golden, full-bodied and spirited as the ice wine that is made on the premises.

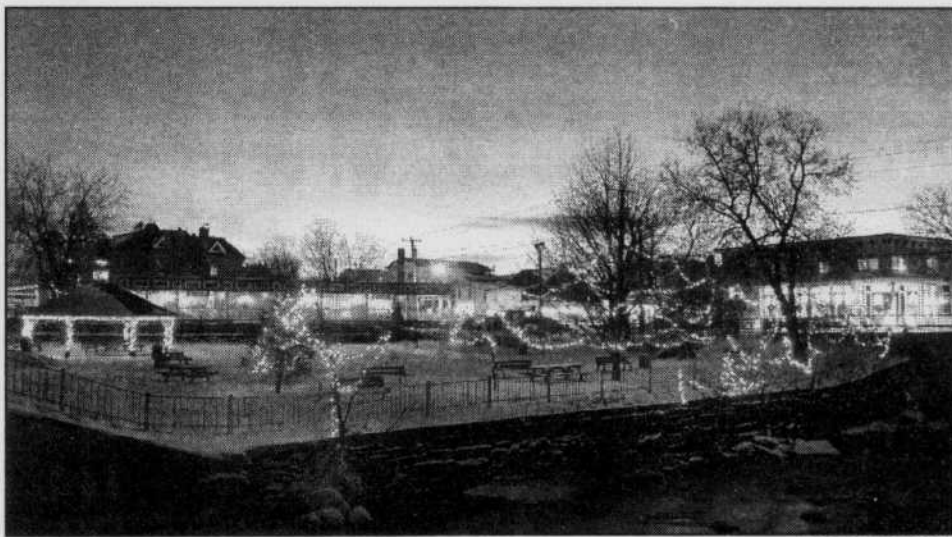
The on-site free dégustations quickly show why the sweet, carefully fermented cider has been the recipient of nine prestigious national and international awards, and selected as Best Choice 2006 in the Debeur wine guide.

A few meters down the road from the Domaine, at 173 Richford, is the Pettigrew honey farm.

The bees may be asleep, but the Pettigrews have bottled and stored the workers' sweet nectar and sell it directly from their home.

The Pettigrews have a wide assortment of honeys, including stalwart Clover, Wild Flower, Raspberry, Apple Blossom, Blueberry, Buckwheat and Quebec's only Bull Clover, a true taste sensation, all at \$8 per kilo.

The honey made there is 100 per cent pure Quebec honey, non-pasteurised so all of the natural goodness is still in it, unlike most commercial honeys available in grocery stores.

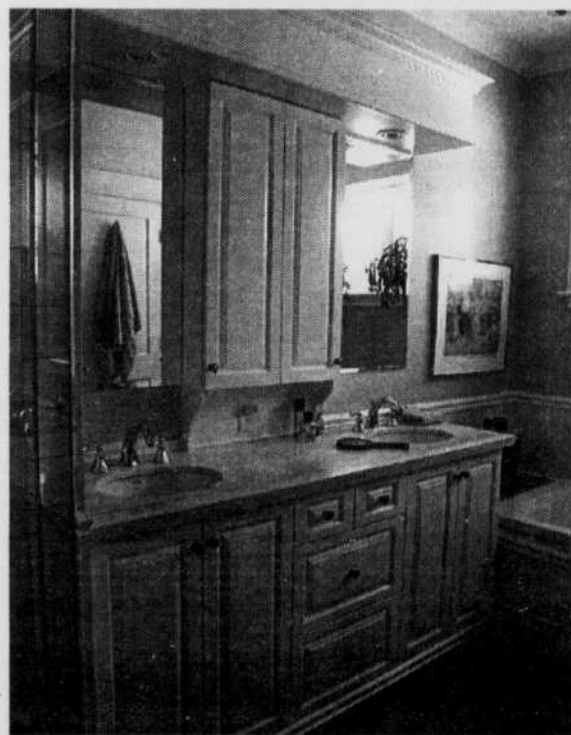


DAVID ANDERSON

ACPlus inc.

KITCHEN CABINETS - VANITIES - CUSTOM FURNITURE

Since 1993



Season's
Greetings
to all



COWANSVILLE



Sale of new or used vehicles
Parts and Service
Aesthetic and body work

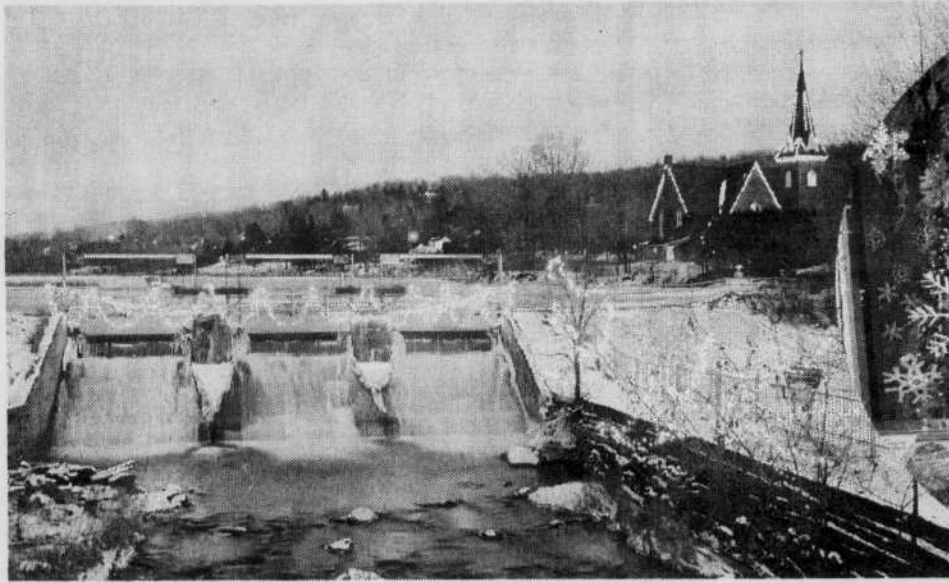
165, rue de Salaberry

(450) 266-8888 Mazda
(450) 263-8888 Toyota

140-1 rue Sherbrooke, Cowansville, Québec, tél. (450) 266-2050
www.acplusinc.ca

Tidings of comfort and joy

By Virginia Wilson



DAVID ANDERSON



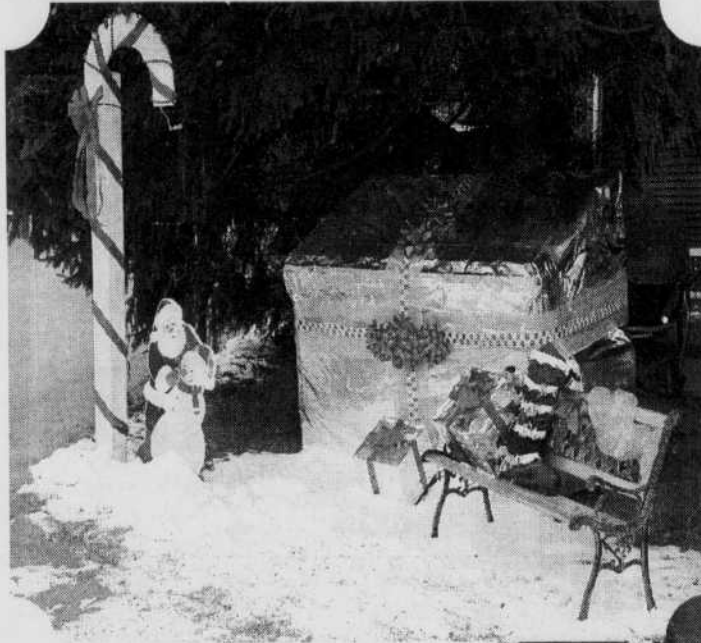
VIRGINIA WILSON

The shops in Knowlton carry more than merchandise; they carry Christmas smells, young smiles and owners who show up every day to greet their customers with a smile, in hopes of making someone's day a little more special.

At least that is definitely the case for, Lynn Matthews, owner of "La Vie Sucrée" on Lakeside Road. From the outside of the store, the "Noel" awning and "Homemade Fudge" sign gives customers a little idea of what's inside, but once inside, the Christmas smells and decor bring you to a very special time of year.

The décor is mostly traditional and offers endless tree decorations, nutcrackers, villages and angels. There are collectibles and personal Christmas balls to bring home to newborns, animal lovers and teddy bear collectors alike. "I am a Christmas nut," says Matthews who expresses her joy of coming into her shop each day. "It is the spirit...things come and go, but the spirit stays forever, and I hope the spirit of Christmas stays in my shop and comes through in my fudge."

The Christmas shop is a part of the town. Matthews says, "I hope my shop keeps the locals coming back and newcomers wanting to discover it."



VIRGINIA WILSON

Diane Demers
Foot care specialist
APQ member
CPADQ
Receipts available
Manicure and Nail Care
Gift Certificates available
266-0997
245 de la Rivière,
Cowansville
Hygienist
Happy Holidays!

SEASON'S GREETINGS

BUSINESS HOURS:
Dec. 24: 8:30 a.m.-6 p.m.; Dec. 25: 12 noon-5 p.m.
Dec. 26: 10 a.m.-9 p.m.; Dec. 31: 8:30 a.m.-6 p.m.
Jan. 1: 12 noon-5 p.m.; Jan. 2: 10 a.m.-9 p.m.

Happy holidays
from
Julie Coderre Pharmacist affiliated with

JEAN COUTU

526 South, Cowansville
(450) 266-3966

We
decorate your
home according
to your dream.

Rita
Fleuriste

For an enchanting
Christmas and a year
of happiness

355 Leclerc Blvd. W.
Granby, Qc J2G 1V5
1-800-905-2881
Tel.: 450-372-2881
Fax: 450-372-6550
www.ritafleuriste.com

RENOVATION CONSTRUCTION
Excellent work at affordable prices!

Need a change in your house?
But you don't know who to call

We do renovation of all sorts
starting from drywall to balconies, additions
and construction new or old -
Specializing in post & beam effect.

Call us for an Estimate Today!
Start thinking of winter renovation now

davechartrand@hotmail.com
RBQ 8312-1434-37

Dave Chartrand - GENERAL CONTRACTOR
25 years experience Sutton 450-538-2570

All I want for Christmas ...

By Virginia Wilson

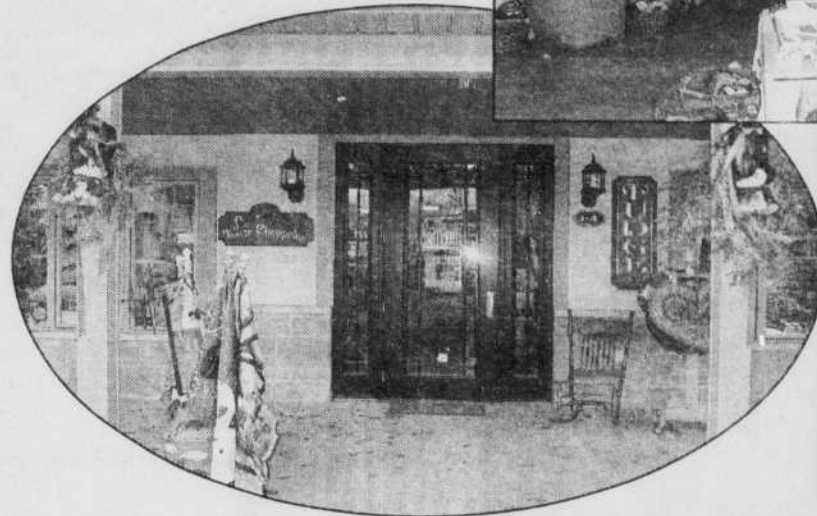
When shopping on a crisp winter's day in Knowlton, one store not to be missed is "le Panier Champêtre" located on Mt. Echo Road in the heart of the village. The country decorated boutique is filled with gift ideas and pieces to be cherished for a lifetime. For the last-minute shopper who needs a gift with a personal touch, shoppers can run into the store to find that something special for mom, or for that a special someone and incorporate a personal touch to a variety of gift-wrapped baskets.

Patti Larose-Mason surpassed her own expectations when her specialty gift shop grew from 100 sq. ft to 3400 sq. ft. "There are always new specialty foods, gifts and imported goods which keep the locals coming back and draw in visitors who enjoy a variety of quality products."

Mason insists an important part of her success was her diversity on a corporate, Internet, local and touristic level. The products offered range from \$2 to \$800, and offer something to suit every customer's budget.

Some of the products that the boutique keeps are from local suppliers like the well-known "Blue Lavender". The store follows the seasons and is currently displaying a beautiful array of Christmas décor. Boutique staff greet visitors with a complimentary piece of fudge to make the shopping experience that much more enjoyable. You can get a sneak peek of what to expect on their website at:

www.lepanierchampetre.com.



PHOTOS COURTESY OF VIRGINIA WILSON

Joy to the world

By Karen Blouin

Townships Expressions has a wealth of local books and CDs to satisfy all your gift-giving needs. Supporting local writers and musicians is no hardship at all when they produce such beautiful work and a gift of their work is a lasting momento of a time and place.

Topping the gift list and new this year is the new edition of Taproot IV: Poetry, Prose and Images of the Eastern Townships. This is the fourth edition of the Taproot anthology begun 10 years ago during Townshippers' Association's 20th anniversary celebrations. It is replete with fiction, non-fiction, poetry, photography and original artwork by Townships writers, photographers and artists. Funny, inspiring, endearing, sobering and just plain fun - this book has it all!

In the musical category, Over the Bridge by Michael Ayles features a mix of instrumental pieces both traditional and more recent compositions. You will hear Michael on voice, flute and banjo, as well as Yann Falquet (guitar), David Clark (fiddle) and Paddy League (bodhran).

Also new this fall is Matthew Farfan's third book The Vermont-Quebec Border: Life on the Line. It is a visual record of life in the villages, towns, and countryside in a unique part of the world -

the region that spans the imaginary line separating Quebec from Vermont.

Then there's Mike Goudreau, who picked up his first guitar at age 14 and hasn't stopped playing since. His diverse musical interests help to explain why Mike is so comfortable in so many musical genres, especially jazz and blues. Mike Goudreau & The Boppin' Blues Band has a number of CDs available through Townships Expressions.

Currently, about 140 writers, poets, visual artists and musicians participate in Townships Expressions. Their English and bilingual books, CDs, cards, prints and calendars are available at the head office of Townshippers' Association (257 Queen Street, Lennoxville) 8:30 a.m. to 4:30 p.m., Monday to Friday, or at the Association's Montérégie-East office (584 Knowlton Road, Lac Brome) Tuesday to Thursday, 9 a.m. to noon. For a complete list of works for sale through Townships Expressions, visit www.townshippers.qc.ca.

For more information, contact Townshippers' Association or e-mail Cathy Turner at ct@townshippers.qc.ca.

EXCAVATION

BRUCE RUMSBY & SONS
TRANSPORT INC.

Season's
Greetings



Thanking all our customers.



576 chemin Choinière, Brigham, QC, J2K 4A7
Tel.: 450-263-3415 450-243-0366 450-266-1020



Have fun creating your own Xmas baskets with either in-store items and/or your goodies

Priced for every budget

Delivery Nationwide



Great assortment of Xmas Decorations & Pre-made Gifts
Blue Lavendar (Fitch Bay)
Webkinz
Lang calendars & mugs & much, much more

Unique gifts
Gourmet foods
Homemade fudge
Great stocking stuffers
European delicacies
Bath products
Local artisans





Gift Basket Drawing with every purchase over \$40.00 between Dec. 8-20/09

Le Panier Champêtre

4 Place Mont Echo, Lac Brome 450-242-2758
www.lepanierchampetre.com

OPEN DAILY 10 A.M. - 6 P.M.



**To all Town of Brome Lake seniors & Wellness supporters
À tous les aîné(e)s de la Ville de Lac Brome et à nos donateurs généreux**

*Our Warmest Wishes for a Merry Xmas
and Happy, Healthy New Year
Nos meilleurs voeux pour un Joyeux Noël
et une Bonne Année*

Retirement Living In The Picturesque Town of Knowlton




*A place to call Home. Independence & Dignity
Warm Friendly Atmosphere*


Wishing all our residents & staff a Very Happy Holiday.


Manoir Lac Brome, 28 Mont Echo, Knowlton
(450) 242-4663 or 1-800-453-3246
www.manoirlacbrome.com
Check out our e-mail: manoirlacbrome@bellnet.ca

20% OFF
on all stove/fireplace
accessories




Big variety on
presentation of coupon
until December 31, 2009.





819 843-4744 450 242-2414







Pure Magic!

By taking the time to have fun and to marvel, you let Christmas work its magic. Promutuel hopes that you can fully enjoy these moments of happiness.

To you and your family,
Merry Christmas and Happy New Year!





PROMUTUEL VALMONT

Everything starts with trust

Waterloo • Granby • Knowlton • Valcourt
450 539-0384 / 1 800 361-7408

INSURANCE AND FINANCIAL SERVICES



Santa Claus is thinking OF YOU!

BLU-RAY PLAYER FREE

Get a Blu-Ray player FREE with a purchase of more than \$999. Quantities limited. Details in store.

LOTS OF MERCHANDISE AVAILABLE BEFORE CHRISTMAS. *DON'T PAY BEFORE YOU WANT*



Purchase a gift card and get a 2nd one of 10% its value



AIR MILES® Reward program is now part of the furniture!

MEUBLES DENIS RIEL

Farnham St-Jean-sur-Richelieu *Avec passion!*

SAINT-JEAN-SUR-RICHELIEU | FARNHAM
450 348-0006 | 1-800-363-1949 • 450 293-3605
370, rue Laberge (Angle de la 35 et boul. du Séminaire) | 1470, rue St-Paul (Sortie 55 de l'autoroute 10)

www.meublesdenisriel.com

*Valid 'till December 20, 2009. «Blu-Ray Promotions» Quantities limited. Until stock lasts. With the purchase of \$999.00 before taxes, furniture, mattresses and decorations, appliances and electronics, you receive free a Blu-Ray Player. If you cancel your purchase you could be reimbursed \$200 + taxes which is the value of the Blu-Ray Player. Financing on credit approval, taxes payable on purchases (minimum purchase of \$500). For the cost of financing, there will be a fee of \$21 charged annually for a balance of more than \$450. Details in store. Certain conditions will apply. Unfortunately in preparing this publicity, there could be technical errors. If we discover this, the corrections will be made in our stores. The prices of the appliances are subject to change without notice. The articles offered in the store could be a little different than presented in this publicity. The models and the material could be different in the store. Photos are for illustration only. mc/m Trademarks of AIR MILES International Trading B.V., used by virtue of a license from LoyaltyOne Inc. and Meubles Denis Riel. Basic offer: 1 thousand per each \$50.

Happy Holidays from the newsroom!

ECO ROUTE *The only reliable and eco-friendly remote starter*



Starting from \$119⁹⁹ +taxes

Excluding installation. Ask for details at your service centre.

Options included

- Automatic shut-off of the remote starter when opening the hood
- Confirmation of signal on hazard lights
- Multi-vehicle function

Lebeau Vitres d'autos
1500 SUD STREET
COWANSVILLE
450 263-5191

Lebeau
Vitres d'autos

CHSLD Santé Courville de Waterloo

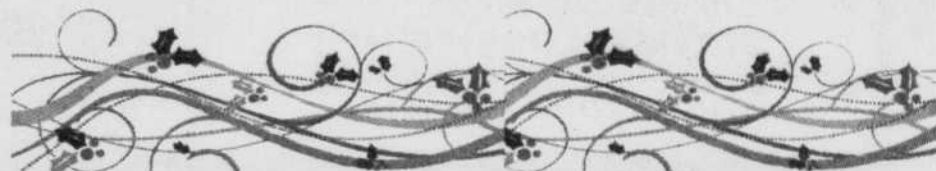
www.santecourville.com

Season's Greetings

Wishing you and your family, Health, Prosperity, and Joy!

5305, Courville Avenue, Waterloo Qc

(450) 539-1821



Michel Gazaille
Ginette Gazaille

*Extending our wishes for the happiest of holidays & warm thanks to all our customers.
The Gazaille Family & all the team*

Open daily 8 a.m. to 9 p.m.

IGA
Magog
231 Sherbrooke St.

IGA
Knowlton
461 Knowlton Rd.

IGA
Farnham
999 Principale St. E.



Do you see what I see

STORES:

One would be hard pressed in attempting to match the singular impression of comfort and simplicity that can only be experienced when opening the door to a genuine old time General Store.

Since 1852 Edwards FG General Merchants inc. has occupied the same building at 12 McCurdy in West Brome.

As if simply walking into the store wasn't enough of a treat at any given time, the founder's grandson Alan Edwards is on site and has an array of the season's basics; very basic that is.

Over there among harnesses, feed, tack, the reliable Can't Hooks (you'll have to ask about that one), farm apparel and oil lanterns you'll find everything you'll need to locate, timber, cart, whittle and stand the tree you'll have eyed in the woods last week.

If Christmas tree trimmings, lighting, fruit cakes,

eggnog, Christmas trees, stands, tinsel, great stocking stuffers, a sturdy Can't Dog (again, you'll just have to ask) even fresh turkeys are called for, Kevin and Chantal have a supply at Flanagan's General Store at 39 Victoria corner Maple in Knowlton.

Here too, in continuous operation since 1890, the store can be described as a cross between hardware centre, museum, and convenience store; this is a must visit, if for no other reason than just to visit.

Not to be left out, Wright's Store at

69 Davis Street in Fulford, a stone's throw from the bridge over the picturesque Yamaska River, beckons all the way back to 1865 and still provides the unparalleled charm of truly personalized service that only a country store can offer.

Carla and Rob stock one of the best arrays of English language Christmas cards in the area, sell Christmas trees to support the local High School Hockey Team and still have space for last minute ornaments, trim hooks and stands.

Drive safe during this festive season



Complexe funéraire
BROME-MISSISQUOI
Baker • Dion • Meunier
To reunite, to reconnect.
COWANSVILLE 450.266.6061
BEDFORD 450.248.2911



PHOTO COURTESY OF PHILIP GODIN

This is that time of the year A tinsely, glittery time

With the Knowlton Festival of Lights, a community venture, running from late November to Dec. 29, merchants come together to entertain visitors who make their way from antique store to clothing boutique to jewelry shop to home designer.

Elves, real horse-drawn carriages, music, caroling, hot mulled wine, apple cider, hot chocolate, bonfires and fireworks await visitors to the town centre. And on Saturday Dec. 12, shops will stay open until midnight! This is an absolute must on everyone's shopping agenda.

And yes, there is a Christmas boutique in Knowlton. The Sweet Life on Bridge Street has several lines of Christmas collectibles and seasonally flavoured fudges which once purchased will probably not make it to the intended stocking intact.

While there, grab a cup of Robbie's spiced mulled cider and wine.




Local galleries are putting on their finest this season as witnessed by Galerie Lac Brome, nestled at the intersection of Bridge and St-Paul's streets. This most recent addition to the Knowlton art scene will be featuring several of the small paintings that have attracted so much attention since its opening this summer.

With recognized names such as Knowlton's Danielle Nadeau, Granby's Michèle Kramer and Montreal's Yvon Lemieux, Michel Bleau, Suzette Émond and Isabelle Tremblay, one should expect the shop to be bustling as we near Christmas.

In addition to paintings and sculptures on hand, Gallery Knowlton on stately Victoria Street has secured a few of Judy Mullins' captivating handcrafted Santas that have often adorned the pages of Decormag and other home designer magazines.

Also featured are blown glass decorations by Guy Martin, handmade jewelry by Knowlton designer Tania Volborth and many other objects d'art in smaller formats, at affordable prices.

Not to be missed, the season's closing fireworks at 6 p.m. on Dec. 29, especially if your shopping excursion in Brome Lake went as planned. Hosted by the local merchants, this spectacular display will take place at Coldbrook Park over Mill Pond in the heart of Knowlton; absolutely the noisiest and most visible holiday treat.

483 Ch. Knowlton KNOWLTON
Restaurant: full breakfast and lunch

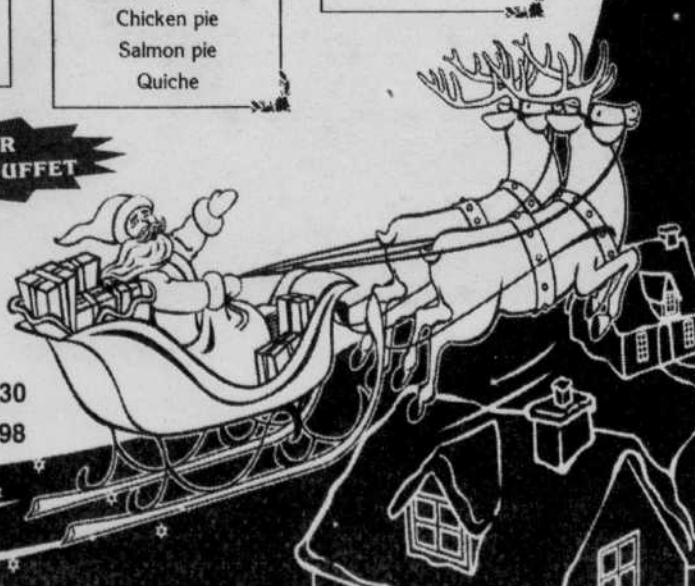
Cakes: carrot, cheese, double chocolate, opera
Assorted pies
French pastries
Christmas cookies
Special cakes on demand

House specialities
Meat pie (tourtière)
Chicken pie
Salmon pie
Quiche

Buche de Noël
Fruit cake
Christmas logs

WE OFFER CHRISTMAS BUFFET

Gift Certificates available



450-243-0330
To Reserve 450-243-6398



Fleur de Maison Foster

Cut Flowers & Small Gifts
Leanin Tree 12oz. Mugs
Leanin Tree Christmas Cards Box & Single

Poinsettias & Centerpieces

Season's Greetings to all my customers



745 Lakeside Foster 450-539-0300 cell 450-521-4209

Joyous voices sweet and clear

The exceptional acoustics of the Old Brick Church on McCurdy Road in West Brome provide the perfect venue for two choir concerts presented by the Studio de musique ancienne de Montréal.

Under the direction of Christopher Jackson, the ensemble of twelve professional vocalists and renowned organist and harpsichordist Geneviève Soly will present two 90-minute classical programs.

These are the "incontournable" of the season's concerts, scheduled for Saturday Dec. 19 at 8 p.m. and Sunday morning at 11 a.m. Seating for 125 in the centenarian building will be at a premium; admission is free thanks to a gracious lover of fine music.

The Montreal Symphony Orchestra may have set up its summer headquarters in Knowlton, but for two weekends

before Christmas the area is enchanted by the Cordes à vent string orchestra.

The ensemble's Christmas concerts have been a favourite for the past 25 years. Programs always blend classical favourites with popular contemporary pieces that really set the mood for the holidays.

Under the baton of Township's Conductor Françoise Turcotte, the orchestra will turn two local churches and a Community Centre into concert halls; admission is very reasonable.

On Sunday Dec. 6 at l'Église St-André in Sutton, on Sunday Dec. 13 at 2 p.m. at l'Église St-François-Xavier in Bromont and at La Maison de la culture de Waterloo on Saturday Dec. 12, at 8 p.m.

If you are in the mood for an exceptionally moving pre-Christmas Carol Service, local musicians Laura and John Barr will lead the congregation at the Creek United Church on Brill Road near

Foster Road on Sunday December 13 at 3 p.m.

Every Christmas the event fills the 85 seats available in this tiny gem of a Country Chapel built in 1878, drawing in locals with song, carols and hymns.

For opera lovers, le Club des mélomanes will host an evening of listening and lively discussion on selected Christmas opera extracts entitled "The Gala: the world's most beautiful voices". The evening will be held at the Brome Lake Community Centre on Dec. 18 from 6:30 p.m. to 9 p.m. Admission is \$3.

The Knowlton Harmony Band will be busy again this year, playing Christmas cheer to both the town's senior homes and three elementary schools in the

weeks leading up to the holiday.

On Saturday Dec. 12, this ten-year-old brass and reed band will hold a free admission concert at the United Church on Knowlton Road at 7:30. The formation is currently looking to fill a vacancy in the percussion section.

Alternately, should listening to a classical music while enjoying a great supper be your preference, renowned pianist Yaakov Ludmer will be performing live at Auberge du Relais corner Lakeside and Bridge on Dec. 19 at 6 p.m.

Santa Claus is coming to town

On Saturday the local Lion's Club sponsored Santa's grandiose arrival amid floats, marching bands and street clowns. The parade was followed by a candy giveaway from the throne of Santa as the Knowlton Harmony Band played in the background and floats were judged.

If a meet and greet with Santa at the end of Saturday's parade wasn't on your elves' busy agenda, Le Club des Optimistes de Lac Brome gave everyone a second chance.

On Sunday from 10 a.m. to 12:30 p.m. at Prouty Hall in Bondville Santa hosted a veritable country breakfast feast and handed out yet more gifts to children. Photos were free to boot!

For the past 10 years Jean-François Malette, Jacques and Jacqueline Defoy and a handful of Optimists volunteers have hosted the event for over sixty children and their families for a nominal fee. No reservations required.



PHILIP GODIN



VeloBrome inc.

MUST REDUCE INVENTORY!

Incredible deals on 2009 and earlier adult bikes
15% - 30% discount
 (best price of the year)
 Some 2010 models now in stock.

10% discount
 off retail on any new item in stock.

Super deals on selected pumps, lights, helmets, and accessories -
10% to 70% discount!

Sale in effect until Dec. 31, 2009.

Store hours: W, TH: 10AM-6PM; F: 10AM-9PM; S: 9 AM-5PM
 Holiday hours:
 Open Dec. 23, 24*, 30, 31*; January, the store will be closed
 *Closed at 4:00 p.m.

VeloBrome, Inc., 1107 ch. Knowlton, West Brome
 Tel: 450-266-5822
 e-mail: info@velobrome.com

ENTREPRENEUR

- Travaux mécanisés
- Marteau hydraulique (brise-roc)
- Chemins privés
- Systèmes septiques
- Lacs artificiels • Démolition
- Fondation • Drainage
- Terrassement brut
- Terre - agrégat
- Sable - gravier
- Pierre des champs

CONTRACTOR

- Machinery work
- Hydraulic hammer (rock breaker)
- Private roads
- Septic systems
- Artificial lakes - ponds
- Demolition
- Foundation • Drainage
- Land shaping
- Topsoil - aggregate
- Sand - gravel • Field stone

Joyeuses Fêtes Happy Holidays

ROCH VALLIÈRES inc.

LICENCE RBQ: 8101-2015-32

Tél.: 450 242-2544

11, chemin Glen, Bolton-Ouest J0E 2T0

We want to take
 this special opportunity
 to thank you for
 your trust over
 the last year.

Happy
 Holidays!

FRANÇOIS BONNARDEL
 Member of the National Assembly for Shefford.
 Granby • 450 372-9152
 Waterloo • Shefford • Warden • 450 539-0404

ASSEMBLÉE NATIONALE
 QUÉBEC

Silent night ...

This Christmas Eve as any other, the Benedictine monks of Saint-Benoit-du-Lac will put their voices together in a majestic Gregorian chant that will ring out from the shores of Lake Memphremagog.

It's a time-honoured tradition, and one the public awaits with eager anticipation.

The service begins at 10 p.m. with prayer, followed by mass an hour later.

At midnight, some monks will join their voices in song to celebrate the birth of Christ through Gregorian chant.

It's all free, although a basket will be passed around for a goodwill offering.

The singing became a Benedictine ritual 200 years ago.

First founded in Europe in the year 529, the order got a boost in the mid-1800s. Dom Prosper Gueranger wanted to restore a way of monastic life that was disappearing in France.

He took it upon himself to breathe life back into the Abbey of Liguge, and he also began the arduous work of restoring Gregorian chant, which for 40 years after the French Revolution was unheard in the celebration of the liturgy. Religion was in turmoil, mass was banned in some places, and the chants were different in every diocese.

Gueranger was a traditionalist. He wanted careful pronunciation and phrasing so as to render the Latin chant understandable. With his disciples at his side,

he was able to establish the chant back into the mass, the liturgy and the vespers. Then he moved on to restore another abbey, the Abbey of Saint-Wandrille in Normandy.

In 1901, anticlerical laws in France drove all of the Benedictine monks into exile, and those of Saint-Wandrille resettled in Belgium. But political and religious instability led another monk, in 1912, to check out Sherbrooke, Quebec.

The city's bishop approved the venture, and the visiting monk settled, purchasing a farm overlooking Lake Memphremagog (take Highway 10 and the Saint Benoit-du-Lac road).

With World War I, the monks residing at Saint-Benoit-du-Lac were cut off from all communication with their colleagues in France. And to make matters worse, their local founder drowned in a boating accident.

The monastery at Saint-Benoit-du-Lac continued, but did not thrive.

It wasn't until 1931 that the "monastery on the lake" began a journey that would see it grow into a full-fledged abbey (an abbey is completely autonomous, whereas a monastery is still under the control of a diocese). Under new guidance, new buildings were commissioned and in 1952, Saint-Benoit was granted status as an abbey and the monks elected their first abbot.

The abbey became self-supporting in that all domestic services were provided by the monks themselves, running the library, the kitchen, the offices, the farm and the factories. It was becoming a fully self-sustainable unit.

Today, the monks of Saint-Benoit-du-Lac, numbering just over 50, support themselves by operating a cheese factory, an apple orchard, a farm with beef cattle and grain, a cider factory and a boutique.

Sound like a lot of work? That's one of the order's rules. Saint Benedict said that "to be a true monk one must live by the work of one's hands."

The abbey-made cheese is fabricated from milk purchased from local sources. The monks just do not have the space required to raise the number of milking cows needed to make the amount of cheese they produce.


Since 1943, the Cheese Factory has been producing Ermite, a blue cheese; Mont Saint Benoit, a mild gruyere; Le Monine, a strong gruyere; and ricotta made with whey. They also make a goat cheese and an old cheddar.

The apple orchard's fruit is made into apple cider and apple sauce.

The abbey became self-supporting in that all domestic services were provided by the monks themselves, running the library, the kitchen, the offices, the farm and the factories. It was becoming a fully self-sustainable unit.

Today, the monks of Saint-Benoit-du-Lac, numbering just over 50, support themselves by operating a cheese factory, an apple orchard, a farm with beef cattle and grain, a cider factory and a boutique.

Sound like a lot of work? That's one of the order's rules. Saint Benedict said that "to be a true monk one must live by the work of one's hands."



STAR CAFÉ

SAT., JAN. 16
Table d'hôte
4-5 service
Reservations

Season's Greetings to all

★ ★ ★ ★ ★ ★ ★ ★

Espresso Coffee - Breakfasts - Lunches

109A Lakeside, Knowlton 450-243-5222



Normandeau

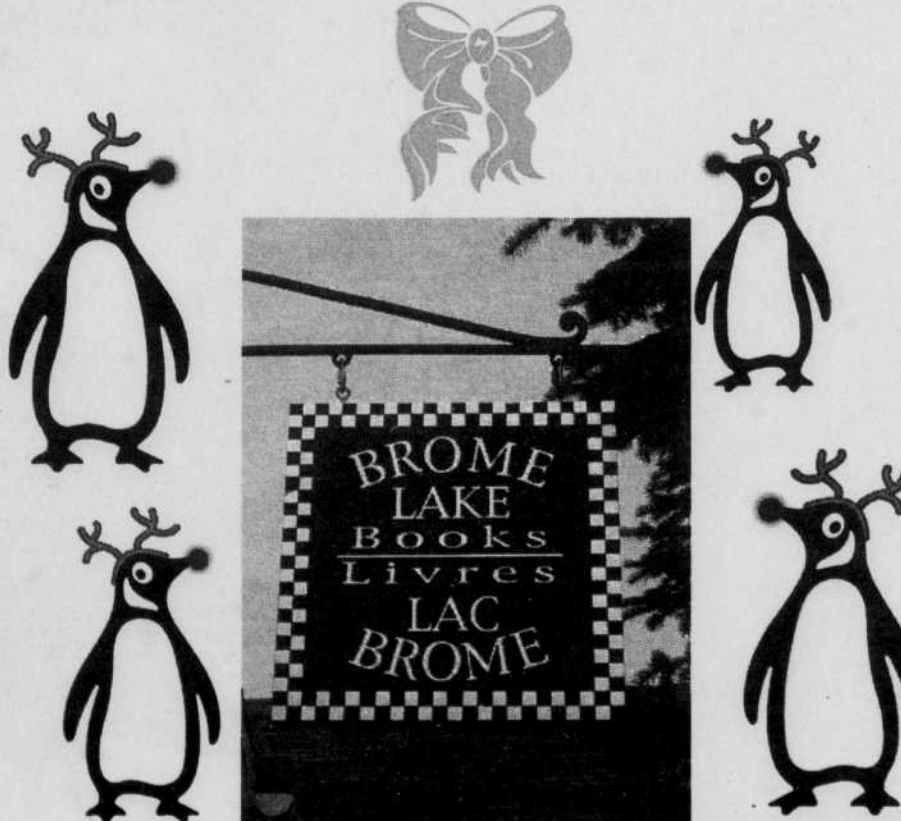
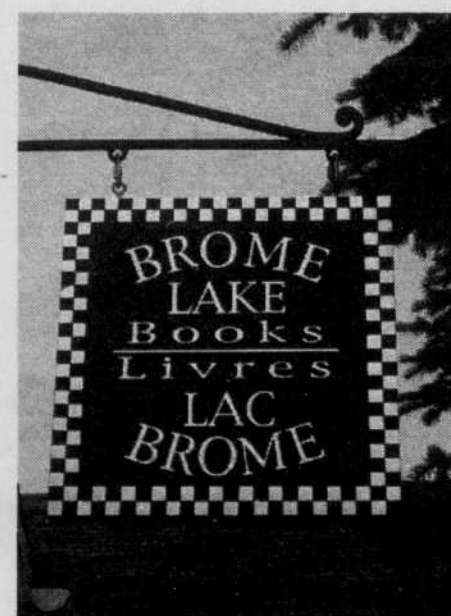
IMMIGRATION CONSULTATION

Dianne Normandeau
Consultante agréée en immigration canadienne
Certified Canadian Immigration Consultant

Membre de la Société canadienne de consultants en immigration (SCCI) Tél.: 450 243-5605
Member of the Canadian Society of Immigration Consultants (CSIC) Fax: 450 243-6951

dianne@normandeauimmigration.ca
www.normandeauimmigrationconsultation.ca

Wrap it up with Penguin!





For a Happy Holiday!
Specials on Penguin Canada Titles

264E Knowlton Road, Lac Brome
450-242-2242



PHOTO COURTESY DAVID ANDERSON



May this holiday
season bring you,
Health, Happiness
& Prosperity

**MAÇONNERIE
BISSONNETTE
INC.**

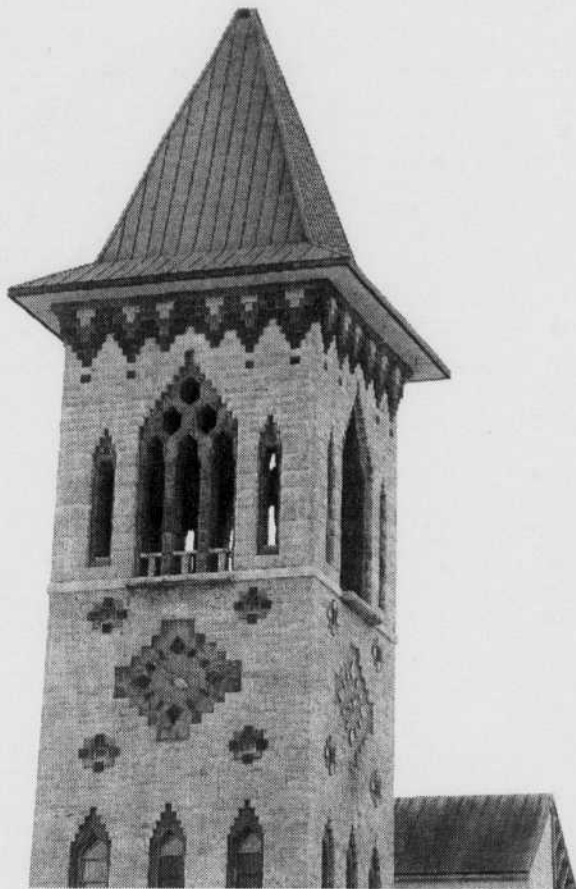
Season's Greetings

J.-Charles Bissonnette, M.Ma.
Eric Bissonnette, Accr. AEMQ
701 HILLCREST
ABERCORN, QUÉ. JOE 1B0

Tel.: Sutton **450-538-2583**
Cell.: **450-531-9071**

Licence R.B.Q.: 1468-6190-81

... holy night



DAVID ANDERSON

The abbey-made cheese is fabricated from milk purchased from local sources. The monks just do not have the space required to raise the number of milking cows needed to make the amount of cheese they produce.

Since 1943, the Cheese Factory has been producing Ermite, a blue cheese; Mont Saint Benoit, a mild gruyere; Le Monine, a strong gruyere; and ricotta made with whey. They also make a goat cheese and an old cheddar.

The apple orchard's fruit is made into apple cider and apple sauce.

The monks live by themselves, autonomously and make a living selling cheese, cider and other products in the popular boutique located in the basement of the abbey.

For any visitor, the boutique is bursting with a large selection of cheese, chocolates, products made by the Monks of Oka and Trappist monks from around Quebec.

They carry an interesting selection of books based on The Rule of Saint Benedict (that is, working with hands and spirit), and hanging on the walls is a collection by naif artist, Claudette Gaston Guy, depicting the joy of life that often accompanies the pursuit of enlightenment.

The boutique is open Monday to Saturday from 9 a.m. till 4:30 p.m., closing from 10:45 a.m. till 11:45 a.m. so that the monks may attend mass. It is not

open on Sundays.

The monks also offer the public a place to visit, to stay, to meditate and reflect. There are various residences for both men and women. Reservations are required and an overnight stay (room and board) is \$40 per person.

The day begins at 5:05 a.m., with Vigils. The word vigils comes from the Latin "vigilate", which means "watch and wait". In this case, it's in reference to the Lord's coming again.

The rest of the day is divided between work, prayer, meditation, chants, recreation and the evening compline (a night prayer with a chant in honour of Our Lady, Mother of God).

The public is encouraged to attend mass and vespers which take place daily, with mass being at 11 a.m. and vespers at 5 p.m. every day, except Thursday when vespers is held at 4 p.m.

For more information, call 819-843-4080.

With files from Alanna Fahey

Oh Christmas Tree Oh Christmas Tree

It's impossible to think about a country Christmas without romanticizing about the annual trek in the woods to find the perfect tree. The calendar image of strolling through the woods with an axe over the shoulder, children in tow and the family pet trailing behind, is not always the reality. More often than not, the trek is through hip-deep snow, or worse, ankle deep mud.

Jean-Pierre and Luce Couture owners of Plantation des Frontières in Saint-Armand near the U.S. border at Frelighsburg, have taken the guesswork out of finding the perfect tree.

For several decades, they have been inviting folks to their tree plantation to peruse their well-shaped trees, along cleared paths. The sense of being in the woods remains the same, but the risk of dragging a Charlie Brown tree home for Christmas is greatly reduced.

Once you've found the perfect tree, there is a boutique on site where you can find the perfect decoration to dress your tree and house to bring the natural sights and smells into your home.

In addition to trees and decora-

tions, the plantation has boughs for decorating and ready made wreaths for sale.

The public is welcome to stop by at any time during weekends, but if you plan to search for a tree during the week, you have to call first at 450-248-3575

Plantation des Frontières is located at 295 des Enables, Saint-Armand, Quebec

Randonnées en: • Charette de foin • Calèche
• Traîneau à chevaux
Pour: • Les couleurs d'automne
• Noël • Mariages • Occasions spéciales
2-40 personnes

Ferme Mountain View Farm

• Hayrides • Carriage rides • Sleighrides
For: • Fall colours • Christmas • Weddings
• Special occasions
2-40 people

INFO: 450-538-7786

POTERIE
Terre à Terre - Down to Earth
Robin Badger & Robert Chartier
Come and see what's new
Venez voir ce qu'il y a de nouveau

Open every Saturday and by appointment even through the Holidays
Ouvert tous les samedis et sur rendez-vous même pendant les Fêtes

67, ch. Bailey, Bolton-Ouest
450-242-2836
www.robinbadger.com

#1 Family Resort in the Northeast
FamilyFun Magazine

#1 in North America for Family Programs
SKI Magazine Reader Survey - 10 years

Package Good for Whole Family!

Canadian residents take 10% OFF!

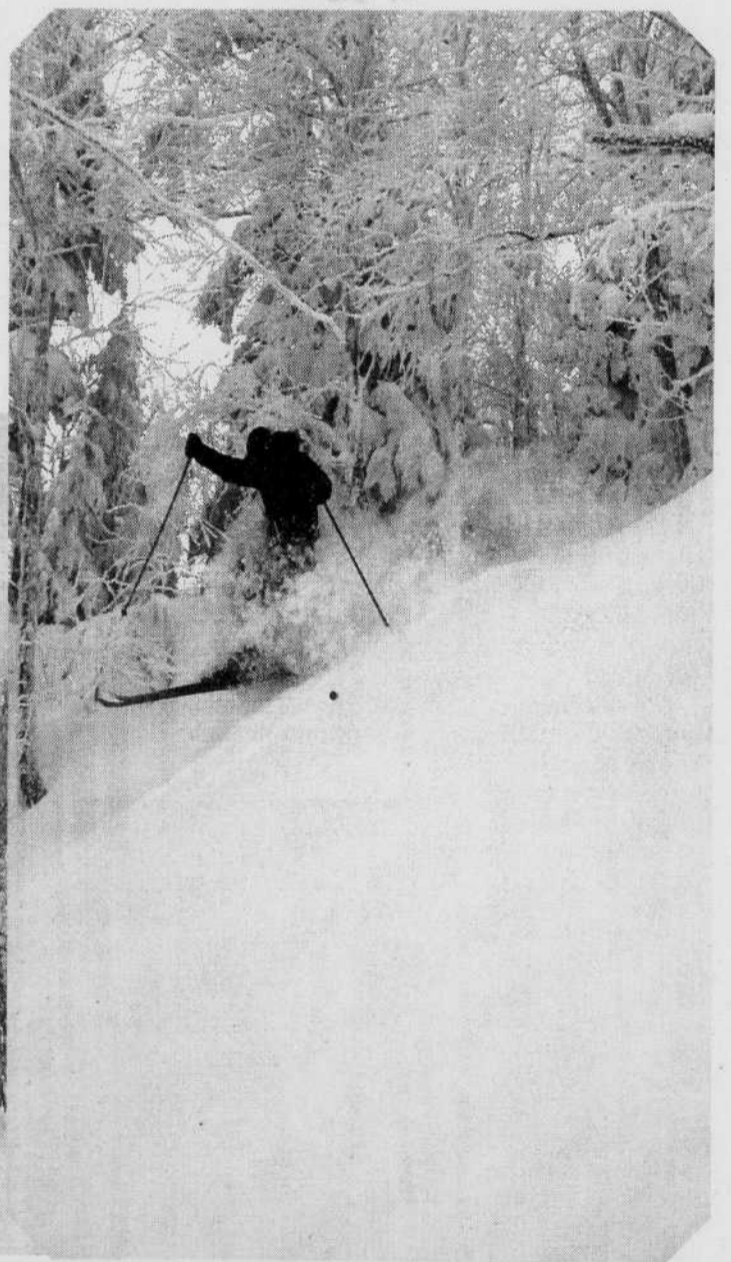
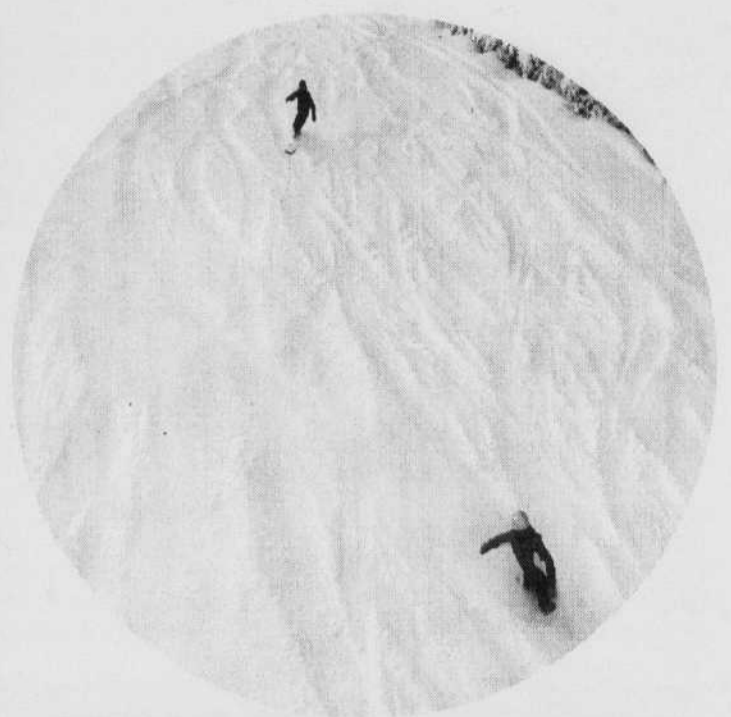
INSTANT WINTER FUN
SMUGGLERS' NOTCH VERMONT

Just Add ^{your} Family.

All the ingredients for your perfect Winter family holiday are here.
Request your FREE Winter Planning Guide & DVD today!
1-800-451-8752 • www.smuggs.com/tr

SMUGGLERS' NOTCH
V-E-R-M-O-N-T
America's Family Resort

Mont Sutton: 50 years of fun



Chenil Stoney Creek Kennel

Dog Boarding
Cat Condos Pickup & Delivery available
 (heated floors & 5 giant outdoor runs)
 (inside pens 5 x 7 ft.)
 Doggie Day Care \$10/day

Bailey Rd. W. Bolton . 450-243-5405

Season's greetings to family and friends during this special time of year.

COLLINI
 Chartered Real Estate Broker
www.collini.ca

Maurizio Collini
 Agent immobilier agréé /
 Chartered Real Estate Agent
 450-242-2472

David Barakett
 Agent immobilier affilié /
 Affiliated Real Estate Agent
 450-522-8411

3 Mt. Echo rd., KNOWLTON



Bishop's University

Serving the community since 1843

Winter 2010

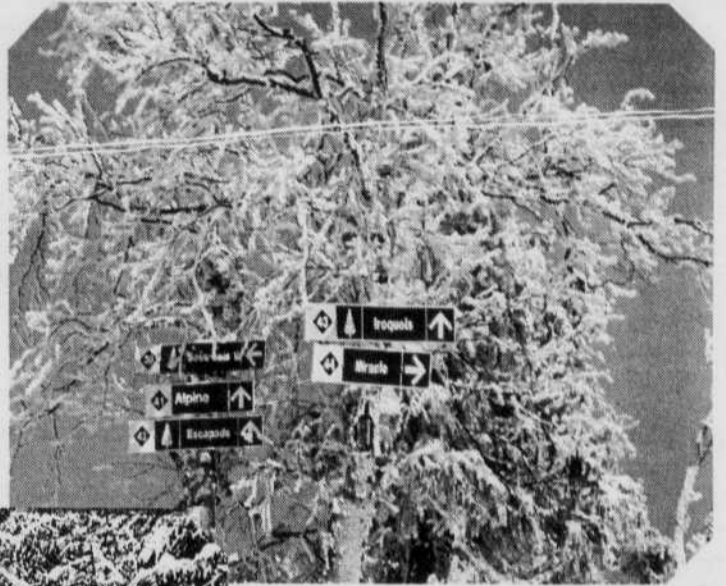
For information about our courses and registration for Sherbrooke, Knowlton, and St. Lambert campuses please visit our website at:

<http://www.ubishops.ca/TimeTable/winter/index.htm>



CONTINUING EDUCATION
 2600 College Street
 Sherbrooke, QC J1M 1Z7
 Tel: 819 822-9670
 Toll Free: 1 877-822-8900
contedu@ubishops.ca

Let it snow, let it snow, let it snow



Sandita INC.
Vêtements contemporains et accessoires pour dames
Contemporary clothing and accessories for women

SPECIALS FOR MIDNIGHT MADNESS ALL DAY

*Happy Holidays to all our customers
Joyeuses fêtes à toutes nos clientes
Lisa, Huguette*

17, LAKESIDE RD., KNOWLTON, QC
450-243-1832

Open daily 10 to 5 p.m.
Sundays 11 to 5 p.m.



UNIPRIX

René-Claude Gagnon, pharmacist

Health care professionals...
...listening to your needs.



Come by and see our new Cosmetic Department

Wishing you a beautiful holiday and looking forward to serving you in the New Year.

FREE DELIVERY Knowlton and Mansonville at Dépanneur 13
Monday to Friday

Open Sundays: 11 a.m.-4 p.m.

310 ch. Knowlton
Knowlton, JOE 1V0
243-5700



WITH FIVE STORES
for your shopping convenience
• excellent quality • reasonable prices
• satisfaction guaranteed

**METRO
PLOUFFE**

20 Avenue des Pins, Bedford
450 Meigs N., Farnham
460 St-Patrice West, Magog
4801 Blvd. Bourque, Rock Forest
1175 King St. E., Sherbrooke

Walking in a wonderland

The townships are well known for their winding wooded trails and scenic hills, several of which have nearly 2000-ft. elevations. Skiers and snowboarders will find thrills on the hills of Owl's Head, Mont Orford and Bromont as well as an extensive network of trails for cross-country and backcountry skiers and snowshoers. Of course the area has great après ski venues, fine restaurants and excellent accommodations should you decide to stay a while.

Some of the highlights include:

COATICOOK GORGE

Observe a 50-m (164-ft.) gorge from atop the world's longest suspended footbridge. On the 20 km (12 mi.) of nearby trails see a power station, two observation towers and a round barn replica. The park has cross-country ski-

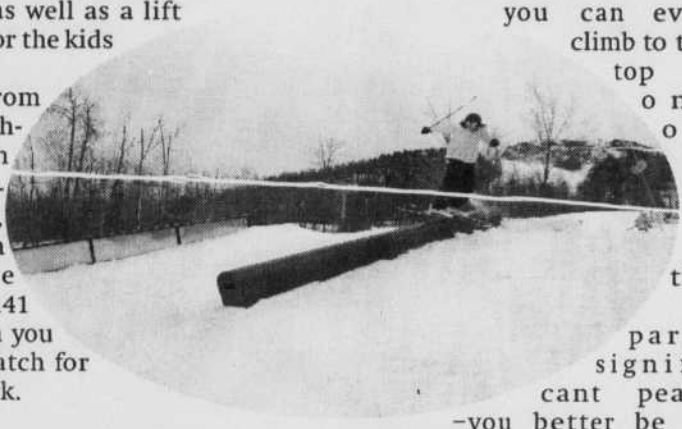
ing, snowshoeing as well as a lift served tubing area for the kids - big and small.

Getting there: From Montreal take Highway 10 (the Eastern Townships autoroute) to exit 121, follow the 55 south to exit 21 where you'll pick up the 141 heading east. When you reach Coaticook watch for the signs for the park.

MONT MEGANTIC PARK

The babbling brook meandering through the mountain beckons the hiker or skier wherever he is.

This park has some of the best snowshoeing in the surrounding regions of Montreal, particularly if you are an intermediate or expert in the sport. There are several designated trails and



you can even climb to the top of one of

the

parks significant peaks

-you better be in

shape for this. The scenery is spectacular with the trees usually heavily laden by the areas phenomenal snowfall. Heated shelters found along certain sections of the trail allow you to warm up along the way. Most of the park huts can be reached on snowshoes and if you reserve, your group can book one for an overnight stay, but book early they are popular with the skiers as well.

Getting there: From Montreal take highway 10 (the Eastern Townships autoroute) past Sherbrooke where it turns into the 112. Just before East Angus turn onto the 253 going south. Follow the 253 until you reach the junction of the 212 and head east. Stay on the 212 to Notre-Dame-des-Bois then follow the signs to the park.

MONT ORFORD PARK

This is a park that has just about everything in the winter, cross-country skiing, winter hiking, snowboarding (with a 2000-ft. vertical) and snowshoeing. There are a number of trails for snowshoers with the real challenge in the form of the Mont Chauve trail, which takes you to the summit and back, a distance of 16 km.

Getting there: From Montreal take highway 10 (the Eastern Townships Autoroute) to exit 118 (Magog-Orford) follow the 141 north into the park.

-Tourisme Estrie

Bistro Knowlton Pub

HO! HO! HO!

Santa is coming early. Join us Thursday, December 10th for "Turkey Lunch" & help us entertain our seniors.

The "Flyers" will take flight on Saturday the 19th

It's no rumour: we are having a Boxing Day Bash upstairs with "The Shane Murphy Band"

Don't miss out on this event - a limited number of tickets are now available

Ongoing throughout the month:

The "Recession Buster" (Wednesday through Friday nites) \$9.95 and

Your Birthday Dinner is on us (proof required)

HOLIDAY HOURS: Opened daily from December 21st

The staff would like to take this opportunity to wish you all a "Happy Holiday Season" - stay safe & please use Nez Rouge!

267 Knowlton Rd., Knowlton 242-6862

Knowlton Dining

By Virginia Wilson

The first ingredient that comes to mind when thinking of the scenic town of Knowlton is the succulent Brome Lake duck, which visitors can find on most menus in the town's restaurants.

Le Relais, which is one of the well-known restaurants in Knowlton, prides itself on its regional dishes featuring Brome Lake duck and pork, Dunham wines, local vegetables and cheeses.

This restaurant, which is also referred to as Auberge Knowlton and the "Steak House" serves up history in the evening with its extensive steak and imported and regional wine menus.

Their menu has a variety of selections for all palates including special evenings like all-you-can-eat mussels on Fridays or their popular Prime Rib Saturdays.

Le Relais, which has grown solid roots in the village, serves quality, flavorful dishes made with local ingredients bursting with quality and flavor for the whole family.

For an evening out, enjoy exquisite delicacies, guests of the "Lakeview Inn". The four-diamond Victorian style dining room serves a menu like no other in the area, especially its renowned foie de gras.

From the ancestral building to the beautiful lights, décor and fireplace, the Lakeview Inn will


take you back in time to an era of horse drawn carriages while enjoying a five-service meal and wine pairings from the extensive wine menu.

The Auberge is a hot spot for classy winter weddings and dashing Christmas parties. An evening at the Lakeview Inn will never to be forgotten, especially during the holiday season.



PHOTO CREDIT

Resto O'Sunrize



Jean Cloutier & Isabelle Piette

CHRISTMAS LUNCH OR DINNER AT RESTO O'SUNRIZE
On December 23rd at 11:30 a.m.
or
Thursday, December 24th at 5:00 p.m.
on Menu
Turkey, Meat Pie, Potatoes, Stuffing, Home-made Beet and Ketchup, and Dessert, one glass of Wine, Tea or Coffee
\$20.00 TAXES INCLUDED
Special gift in a cozy atmosphere
Tickets on sale at Resto O'Sunrize.
Limited place. Everyone welcome.

PROMOTION
on Thursday and Friday night
Your meal is **FREE** on your birthday
Must be with 3 other people
Saturday Minimum of 10 people
on reservation

MONDAY TO FRIDAY
from 6 am to 8 am
2 eggs 1 meat
coffee
\$4.25 tx included

1076 ch. Knowlton, W. Brome 450-263-5063

Le Store

A Hidden Treasure - A Recession Store

Drop by during Midnight Madness and we will have a little something for you




New Custom Embroidery Service
Different spreads to taste

31 Lakeside, Knowlton

Season's Greetings

AUTO ÉLECTRIQUE
Michel Pagé

- General Maintenance
- Electronic Fuel Injection
- Winter Tune-ups

Closed Dec. 24th Open Jan. 4th

1163 ch. Knowlton (Rte 139) West Brome
(beside Marché Vallée Bleu)
Tel.: 263-5858

SUTTON:

RÉAL BOULANGER FOUNDS THE APSSQ

Of course, some winters were tougher than others, like that of 1968. That winter there was no snow.

In a generous show of support for his friend Réal, Jean-Claude Tremblay, the owner of the Quebec City ski resort Le Relais, invited Sutton's season's pass holders to ski for free at Le Relais. Together, Jean-Claude and Réal went on to found the APSSQ (in English, the Association of Quebec Ski Resort Owners), today called the ASSQ.

Réal had become an expert in ski resort development and was frequently hired by Sno-engineering Inc. to design runs for several Quebec ski resorts. It was also Réal who created the "Ski East" program.

In 1961, Sutton, Jay Peak, North Hatley and Orford joined forces to offer weekday tickets valid at any of the four resorts. This promotion proved very successful in attracting skiers from the north-eastern United States.

Today, Sutton, Owl's Head and Orford work together to offer a greater variety of runs to this US market.

HISTORY IN THE MAKING

Over the years, the resort has welcomed a growing number of visitors, making a significant contribution to the region's economic development and tourist industry. Condos, chalets, small hotels and quaint B&Bs have sprung up to accommodate visitors.

Numerous restaurants and boutiques have opened and an increasing number of activities have made the

Brome-Missisquoi area a true four-season tourist destination.

Every generation of the Boulanger clan has contributed to the success of the family-run resort. Whether in the family kitchen or on the dairy farm, family members and employees have worked as a team to meet the challenges and make Sutton the success it is today.

Now, the fourth generation of Boulangers is getting involved in the family business. This past summer, the children of Luc Boulanger, Director of Operations, spent their vacations giving the resort's chairs a fresh coat of paint!

This truly is the tale of a remarkable family that was, and continues to be, a driving force in the development of an entire region of Quebec.

Nothing like home cooking

Little if anything beckons home for the holidays more than the comfort of fresh baked bread or the sweetness of Christmas treats, and Knowlton's best bakers, confectioners, canners and jam makers make the very best of it.

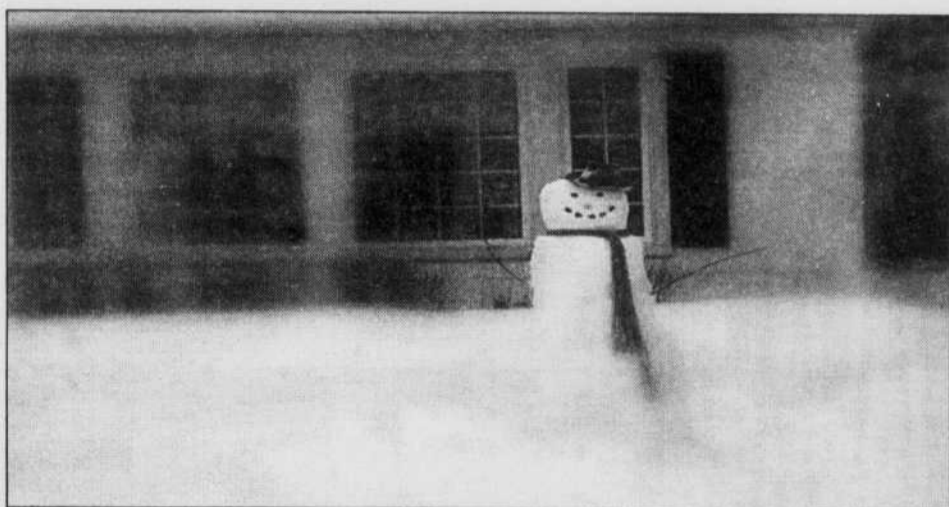
At 10 a.m. on Saturday Dec. 12, the Brome County Historical Society will hold its annual Christmas bake sale at the corner of Lakeside and Victoria in Knowlton. This is very much an early-bird-getting-the-fresh-bread kind of thing.

There will be lots of everything important, such as tarts, shortbreads, bread and buns, fruit cakes, plum puddings, bûches de Noël and Mason jars filled with home cooked baked beans, preserves, jams and jellies.

True to country living, you can even buy home-baked yummy Gingerbread people and have them hand personalized for trimming a tree or finishing a special parcel.



I'll have a blue Christmas without you



Not all Christmases are happy, as evidenced by the number of people seeking the solace provided by the "Quiet Christmas" service at St-Paul's Anglican Church on St-Paul's street corner Lakeside in Knowlton.

The service allows people having suffered a loss to reflect and remember while attending a circumstance-sensitive service. The Church will be made quiet and the lights lowered to ensure intimacy for the evening on Dec. 22 at 7 p.m.

Musicians Arnee Davis and Shirley Spencer will play songs by Leonard Cohen among others.

Knowlton knows how to give

Knowlton residents help fight poverty by shopping online - for a cow. People everywhere are discovering that their purchasing power can literally change the world, one gift at a time, through gift-giving to a project in a developing country.

This year, one such organization, World Vision, has created a gift catalogue to allow Canadians to provide essential funding for World Vision's transformational development work with communities.

You can choose the gift that is most meaningful for you to give and you can be assured it will meet a critical need in places where World Vision works.

Last year, more than 10 local Knowlton residents used the catalogue to buy \$2,055 worth of essential items ranging from livestock to school uniforms to medical supplies for children and families in developing countries.

Visit the World Vision Gift Catalogue at www.worldvision.ca/gc

Gift Catalogue Newsroom

World Vision

Réparation D.P.L. enr.

SMALL MOTOR REPAIR SPECIALIST

SNOWBLOWERS - SOUFFLEUSES
CHAINSAWS - SCIÉS À CHAINES
ALL MAKES OF ATVs - TOUTES MARQUES DE VTT

*Thanking all our customers
& Happy Holidays!*

Dannie Cotton, prop.
1081 Knowlton Road, West Brome (450) 263-4435

La Vie Sucrée

"The Sweet Life"

DEPARTMENT

See what's new this year.
Come by & browse.

The store is overflowing with this season's collections.

Have a nibble of fudge with us.

Open daily 10-5 p.m.

Lynn Matthews & Roger Jones

29 Lakeside, Knowlton QC
Tel.: 450-242-1445

Village & Country

There's no place like home for the holidays. Friends and family will delight in the special features of this Knowlton village home, light filled rooms, 3 bedrooms each with bath. Choose a nice vintage from your wine cellar and get cozy by the fireplace in the living room. Call me to show you more. \$629,000

Let it snow, let it snow, let it snow. You'll be comfy and warm in your 3 bedroom, 2 bathroom condo with 9 ft ceilings, day long sunlight, hardwood flooring, fireplace and west side balcony. Includes appliances, 2 parking spots in garage and elevator all in a secure building. \$309,000

Deck the halls with boughe of holly in your new 4 bedroom home with wood burning fireplace and rustic oak, stone and ceramic floor. Well integrated in its setting on a quiet cul-de-sac, wooded and with no neighbours in the back. You couldn't give your family a better present. \$475,000

You'll be rockin' around the Christmas tree in your antique farmhouse here at Spruce Lodge Farm on approximately 70 acres of majestic property with mountain vistas, fields and forest, trails for recreation. Perfect for family fun, or as a working farm, located between Knowlton and Sutton. \$729,000

LOIS HARDACKER
Chartered Real Estate Agent

ROYAL LEPAGE
ACTION

Awarded Top Ten Club designation for Royal LePage in Quebec
Classed #10 in 2007

Tel.: 450-242-2000 Fax: 450-243-0914
e-mail: lois@royallepage.ca
3 Victoria, Knowlton

Have a Merry Christmas ...



For Christmas - decorative carpets. A great idea! Rugs of all sizes Joyeux Noël Wishes from Tapis Cowansville

Flor deco
COUVE PLANCHERS

Tapis Cowansville
548 rue de la Rivière, Cowansville, QC J2K 3G6
Tel.: (450) 263-4622 • Fax: (450) 263-4100
tapis.cowansville@flordeco.ca

Rugs • Tiles • Hardwood • Linoleum

Season's Greetings from the Picken Family

Picken's Farm Equipment Inc.
Waterloo • 1-888-539-1114

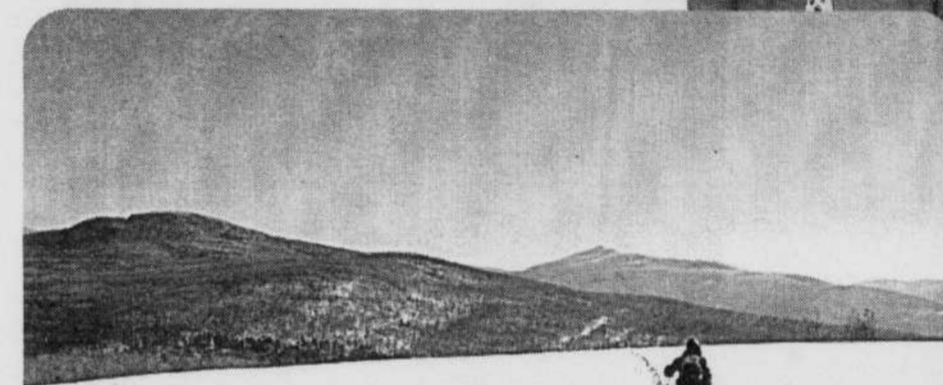
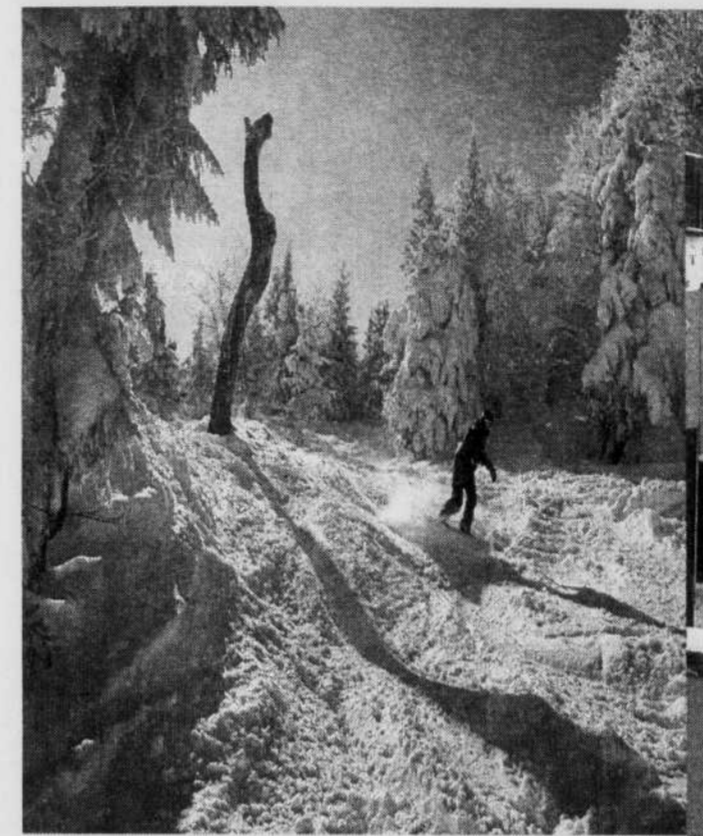
Ho! Ho! Ho!

C.K.'s
INCOME TAX SERVICE AND BOOKKEEPING
Merry Christmas, Peace and Harmony in the New Year. Thank you for your support.

Carol Krainyk

Season's Greetings 512 Ch. Knowlton Rd., Knowlton (450) 243-6324

... in the Eastern Townships



J.L. FLANAGAN
MARCHAND GENERAL MERCHANTS SINCE 1881
THE STORE WITH JUST ABOUT EVERYTHING
Season's Greetings and Happy New Year to all

YEAR ROUND HOURS
Mon.-Thurs: 8 am - 6 pm; Sun.: 9 am - 5 pm
Fri. & Sat.: 8 am - 7 pm

39 VICTORIA, KNOWLTON TEL.: (450) 243-6480

Transport Detracon inc.
1048 Knowlton Rd., Lac Brome

**Sean Peasley
Brian Wells
Tel.: 450-263-9613**

Mini container:
• renovation
• construction
• cleaning
• flatbed service
• all terrain pallet jack

Thanking all our clients for their support & Season's Greetings

www.detracon.ca

Hôtel & Spa
Etoile Lac
sur le Lac
Hotel • Spa • Restaurant
On the shore of Memphremagog lake

GATEWAY AND ROMANCE PACKAGE
1 night's lodging + complete breakfast
1 table d'hôte dinner (4 courses)
With one hour massage
starting at **175\$** + taxes
Without massage
starting at **110\$** + taxes
Rate in regular room per person in double occupancy

ST-SYLVESTRE PARTY PACKAGE
(DECEMBER 31, 2009)
1 night's lodging + new year brunch
1 gastronomic dinner (6 courses)
Sparkling wine and countdown at midnight
Live music and dance
starting at **194\$** + taxes
Rate in regular room per person in double occupancy

VISIT OUR WEB SITE
www.etoileurlac.ca
TO LEARN MORE ABOUT OUR SPECIAL OFFERS.

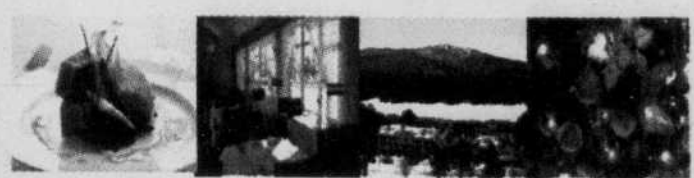

GIFT CERTIFICATE
Give an irresistible gift. One of our customized gift certificate applicable at the Spa, at the restaurant l'Ancre or for lodging


The Hotel is located beside a 1.5 km lighted skating path and nearby Mt. Orford for cross country and downhill skiing.

1200, rue Principale Ouest, Magog
819-943-6521 • www.etoileurlac.ca



Quilliams
Hôtellerie de charme
LAC BROME - QUÉBEC - CANADA





120\$ PP
(Services included / Taxes not included)

35\$ PP
(Services included / Taxes not included)

New Year's Eve (Dec. 31)
Cocktail
7 Service Dinner
Dancing
The Appalachian Groove Band (Jazz)

Brunch January 1st



Gift Certificate

Reserve now

450 243-0404 www.aubergequilliams.com
572, ch. Lakeside, Lac Brome

Christmas at



19 Principale N., Sutton (QC) JOE 2K0 • 450-538-8897

Snowshoe Sale & Rental



Trail Crampons



\$85⁹⁹



\$59⁹⁹

Ski Goggles & Helmets
Smith • Giro • Scott • Carrera

Selected Clothing and Accessories
20% to 50% off



Ski & Snowboarding Clothing and Jr
Helly Hansen, 686, Ripzone, etc.
NorthFace & Scott





FESTIVAL of LIGHTS

Knowlton, Brome Lake



Brome Lake has lit its finest stars for you to enjoy a magical setting!
From November 28th to January 1st, we welcome you...

<p>Opening Ceremony From 5:30 p.m. in Coldbrook Park. Illumination, animation, hot mulled wine, apple cider, hot chocolate, bonfires and more!</p> <p style="text-align: right;">November 28</p>	<p>Midnight Madness in Knowlton Boutiques and restaurants ARE GOING MAD and staying open until midnight! Don't miss the sales, specials and street animation!</p> <p style="text-align: right;">December 12</p>
<p>Santa Claus Parade Presented by the Lions Club—from 1 p.m. in the center of Knowlton, followed by a visit from Santa Claus</p> <p style="text-align: right;">December 5</p>	<p>Snow Ball Dinner, music, dance and fancy dress attire. Proceeds go to Theatre Lac-Brome</p> <p style="text-align: right;">December 19</p>
<p>Christmas Concerts At St. Paul Church at 3 p.m. (\$10) At United Church at 7:30 p.m. (free)</p> <p style="text-align: right;">December 6 December 12</p>	<p>Magical Winter Fireworks Coldbrook park at 6 p.m. over the Mill Pond. A classic of the Holidays in Brome Lake!</p> <p style="text-align: right;">December 29</p>

Other Christmas concerts, GIANT Santa's letter box, "5 to 7" every Saturday with bonfires and hot chocolate, family brunch, dinner dance, movies, skating rinks and much more!

www.cclacbrome.com/festivaloflights • 450 242-2870