

THE ACCIDENT Insurance Company OF CANADA.

Is the only CANADIAN COMPANY solely devoted to Insurance against
which has made a

SPECIAL DEPOSIT WITH GOVERNMENT

for the security of its Policy-holders. It is *not* mixed up with Life, Fire or
Insurance; being but for

ACCIDENT INSURANCE

alone, is able to transact the business upon the most favorable terms and
well as a secure basis.

PRESIDENT:—SIR A. T. GALT, K.C.M.G.

VICE PRESIDENT:—JOHN RANKIN, Esq.

MANAGER AND SECRETARY:—EDWARD RAY

Head Office:—Corner St. Frs. Xavier and Nctr
MONTREAL.

ÆTNA INSURANCE COMPANY

HARTFORD, CONN.

Cash Assets \$7,000,000

(Montreal Agency established 1825)

WOOD & EVANS, Agents

91 St. Francis

HARTFORD FIRE INSURANCE COMPANY

HARTFORD, CONN.

Cash Assets \$3,270,000

(Incorporated 1810)

WOOD & EVANS, Agents

91 St. Francis

PER
Z-1456
EX. 2

THE STANDARD

Life Assurance Company,

CANADA HEAD OFFICE, MONTREAL,

151 St. JAMES STREET.

The STANDARD is one of the oldest and most extensive institutions existing in Great Britain for the Assurance of Lives.

Amount of Assurances accepted during the year 1876 [1,948 Policies].....	\$7,530,000
Total sum Assured at 15th November, 1876, over	90,000,000
Annual Revenue at 15th November, 1876, upwards of.....	3,750,000
Accumulated Fund Invested in Mortgages in England, United States and Canada, Government Securities, Lands, &c., upwards of.....	25,000,000
Claims paid in Canada, upwards of.....	1,000,000
Deposit at Ottawa for Benefit of Canadian policy holders.....	150,000
Other Canadian Investments, over.....	600,000

Prospectuses, Annual Reports, Tables of Rates, &c., can be obtained on application at the Head Office, Montreal, or any of the Agencies throughout Canada, where every information on the subject of Life Assurance will be given.

W. M. RAMSAY, MANAGER,
MONTREAL.

RELIANCE MUTUAL LIFE ASSURANCE SOCIETY.

Established 1840.

Head Office for Canada—CITY BANK CHAMBERS,
169 St. JAMES STREET, MONTREAL, P.Q.

The Directors have decided to invest all the Assets of this Branch in Canadian Securities, thus enabling them to offer lower rates and superior advantages.

All Policies issued direct from this Office

The sum of \$100,000 has been invested in Dominion Stock, and placed in the hands of the Receiver-General, for the security of the Policy-holders.

AGENTS WANTED.

FREDERICK STANOLIFFE, Resident Secretary.

ELECTROTYPING

Of all descriptions, on Wood or Metal mountings, executed promptly and at moderate prices, by the

DOMINION TYPE FOUNDRY COMPANY,

CHENNEVILLE STREET, MONTREAL.

LIFE ASSOCIATION OF SCOTLAND,

FOR LIFE ASSURANCE AND ANNUITIES.

HEAD OFFICE—EDINBURGH, 82 PRINCES STREET.

Extract from Statements submitted to the 37th Annual Meeting.

During the Year ending 5th April, 1876,

The NEW LIFE ASSURANCES were.....	2,148 for £982,388	Stg.	\$4,780,954	93
The ANNUAL PREMIUMS on these Transactions were.....	32,241	"	156,906	20
NEW LIFE ANNUITIES were purchased for	per annum 1,657	"	8,064	06
The REVENUE of the year was.....	418,767	"	2,037,950	73
308 DEATHS occurred amongst the ASSURED under Policies for...	165,025	"	803,121	66

At the end of the Year—

22,353 POLICIES of Assurance were in force for (less re-assurances)	£9,404,900	"	45,770,513	33
440 LIFE ANNUITIES were in force for.....per annum	18,920	"	92,077	33
The TOTAL CLAIMS paid under Life Policies were.....	2,054,486	"	9,998,498	53
The TOTAL CASH BONUSES allocated to Policy-Holders in Class A. were	678,952	"	3,304,233	00
The ASSETS in hand, as per Balance Sheet, were	1,968,309	"	9,579,103	80
The FUNDS, after deduction of all unpaid liabilities, and exclusive of the values of Re-Assurances, amounted to	1,880,171	"	9,150,165	52

The Association has two Classes of Policies, A and B, having distinctive arrangements as regards Bonuses, &c.

CLASS A.

Cash Bonuses are allocated every year to Policy-holders of five years' standing, who have paid six years' premiums, and are applied in part payment of the next premiums payable for the policies. The outlay required, after the sixth payment, is thus much below the usual amount.

CLASS B.

The Bonuses are declared every five years, and are in the form of Contingent Additions to the Sums Assured, and reserved for those who do not die before the average period. These Bonuses are accordingly three or four times larger than the ordinary Bonuses of other Offices.

The Association is Distinguished by its Liberal and Protective Regulations in favour of the Policy-holders.

The Policies are unusually favourable as regards Indisputability—Non-Forfeiture—Place of Residence, &c. In Class B, the assured may proceed to any part of the World.

The utmost Protection is afforded under accidental omission or inability to pay premiums, and the policy-holder's convenience is met by arrangements for postponing payments; by Loans to the extent of the Value of the Policy; or by Reduction of the Assurance to a smaller amount, &c.

In Discontinuing payment of his premiums, the policy-holder is protected against loss by the Non-Forfeitable Premium System, now extended to almost all kinds of Assurances.

DIRECTORS AT EDINBURGH.

Sir ARCHIBALD HOPE, of Craighall, Bart., *Chairman.*

JOHN SCOTT MONCRIEFF, Esq., C.A.

THOS. MACKENZIE, Esq., Writer to the Signet.

JAS. SANDERSON, Esq., Dep. Insp.-Gen. of Hosp.

DONALD BEITH, Esq., Writer to the Signet.

The Rev. Professor KELLAND, University.

PATRICK ADAM, Esq., S.S.C.

WILLIAM MUIR, Esq., of Instrynich.

JAMES COX, Esq., Clement Park, Dundee.

JAMES WALKER, Esq., of Dalry.

GEO. ROBERTSON, Esq., W.S.

Medical Officers,—Dr. JOHN BROWN, 23 Rutland Street, and Dr. ALEX. PEDDIE, 15 Rutland Street.

HEAD OFFICE FOR CANADA:—99 ST. JAMES STREET, MONTREAL.

DIRECTORS.

Geo. Moffatt, Esq., (Gillespie, Moffatt & Co.)

Peter Redpath, Esq., (J. Redpath & Son.)

J. H. R. Molson, Esq., (J. H. R. Molson & Bros.)

J. G. Mackenzie, Esq., (J. G. Mackenzie & Co.)

Joseph Doutre, Esq., Q.C.

Solicitors—Messrs. RITCHIE & BORLASE.

Medical Officer—R. PALMER HOWARD, Esq., M.D.

Secretary—RICHARD BULL.

**THE
RICHELIEU & ONTARIO NAVIGATION CO.'S
DAILY**

ROYAL  MAIL

LINE OF STEAMERS,

RUNNING BETWEEN

Hamilton and Quebec.

THE SPLENDID COMPOSITE AND IRON STEAMERS

"CORSIKAN," "SPARTAN," "ALGERIAN,"

"CORINTHIAN," "MAGNET," AND "PASSPORT,"

Leave HAMILTON Alternately EVERY DAY at 9 A.M., calling at

TORONTO, DARLINGTON, PORT HOPE, COBourg, KINGSTON,

GANANOQUE, BROCKVILLE, PRESCOTT AND CORNWALL,

And Arrive at MONTREAL the Next Day at 7 P.M., connecting with the LARGE AND COMFORTABLE IRON STEAMERS

QUEBEC & MONTREAL,

EVERY EVENING at 7 P.M.,

Calling at SOREL, THREE RIVERS and BATISCAN, arriving at QUEBEC the NEXT MORNING at SIX o'clock, in time to connect with the Saguenay River, the Quebec and Gulf Ports, and all the Ocean Steamers for Liverpool, London and Glasgow.

R E T U R N I N G .

They leave QUEBEC Every Day at FIVE O'Clock P.M., and MONTREAL at NINE the Next Morning, and Lachine at 12 (noon). for HAMILTON and Intermediate Ports.

AND THE FOLLOWING SIDE LINES :

Between MONTREAL & THREE RIVERS & MONTREAL & CORNWALL :

The Bessemer Steel Steamer "TROIS RIVIERES" leaves MONTREAL every Tuesday and Friday at 6 A.M., for THREE RIVERS, calling at Sorel, Maskinongé, Rivière du Loup, Yamachiche and Port St. Francis, for Nicolet.

The Bessemer Steel Steamer "BERTHIER" leaves MONTREAL for BERTHIER every Tuesday, Thursday and Saturday, at 2 P.M., calling at Repentigny, St. Sulpice, Lavaltrie and Lanoraie.

The Bessemer Steel Steamer "Chambly" leaves MONTREAL for CHAMBLY every Tuesday and Friday at 2 P.M., calling at Verchères, Contrecoeur, Lanoraie, Sorel, St. Ours, St. Denis, St. Charles, St. Marc, St. Mathias, Belœil and St. Hilaire.

The Iron Steamer "TERRÉBONNE" leaves MONTREAL for L'ASSOMPTION every Day at Three o'clock, calling at Boucherville, Varennes, Bout de l'Isle, Lachenaie and St. Paul l'Ermite.

The Steamer "BOHEMIAN" leaves MONTREAL for CORNWALL every Tuesday and Friday at 12.30 P.M., and LACHINE at 3.30 P.M., calling at Beauharnois, St. Timothé, Valleyfield, Coteau Landing, Port Lewis, St. Anicet, Lancaster, Summerstown and St. Regis.

For further information, apply at the Offices,

228 St. Paul St., 133 St. James St., and at Canal Basin, foot of McGill St.

ALEX. MILLOY,

Traffic Manager.

J. B. LAMERE,

General Manager.

JOSEPH L. CLEMENT,
BILLIARD TABLE MANUFACTURER.

BILLIARD TABLES equal to those of the best manufacturers, and much cheaper, promptly made to order. Billiard Tables, old styles, reduced to the present popular sizes at very low prices.

MANUFACTURER OF PLAIN AND FANCY FURNITURE.
483 ST. DENIS STREET, MONTREAL.

LOUIS CHAUMETTE,
Livery, Board and Sale Stables,

110 Notre Dame Street, Montreal.



Carriages, Waggon, Ladies' and Gentlemen's Saddle Horses,
 may be procured at the shortest notice.
 Horses in Livery and for baiting will receive every attention.

LOVELL PRINTING & PUBLISHING CO.,

Printers, Stereotypers, Electrotypers & Binders.

23 St. Nicholas Street, Montreal.

MONTREAL FLORAL NURSERIES,

MRS. JAMES COOPER, SEN., PROPRIETOR,

ST. JAMES SQUARE, 126 ST. DENIS STREET.

*Greenhouse Plants, Roses, Flowering and Bedding
 Plants, &c., &c.*


Particular attention paid to making Bouquets, Wreaths, Crowns, Crosses
 Floral Designs and Decorations of Flowers.

G. A. BEWERNICK,

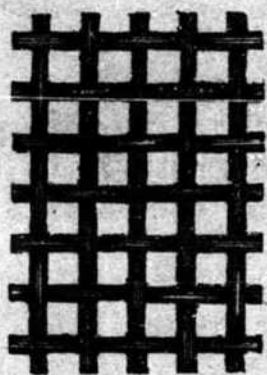
MANUFACTURER AND IMPORTER OF

HATS, CAPS AND FURS,

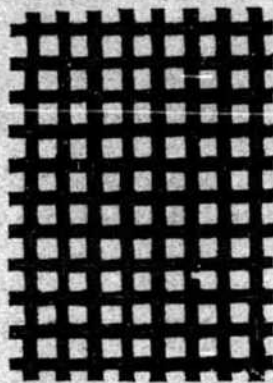
399 Notre Dame Street, Montreal.

 FINE FURS MADE TO ORDER, A SPECIALTY.

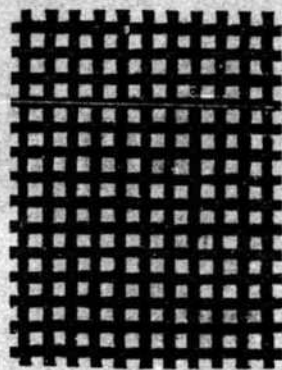
VICTORIA WIRE WORKS.



No. 4, Mesh, No. 14 Wire.



No. 6, Mesh, No. 16 Wire.



No. 8, Mesh, No. 18 Wire.

A. DECARIE & CO.,

MANUFACTURER OF

Brass and Iron Wire Cloth, Crimped Spark Wire Cloth for Coal Burning Locomotives ; Twilled Spark Wire Cloth for Wood Burning Locomotives ;
Coal and Sand Screens, Foundry Riddles, Cheese and Meat
Sieves, Coal Sifters and Meal Sieves, &c., &c.

WIRE FENCING for Cemeteries, Residences, &c.

A. DECARIE & CO., 570 CRAIG STREET, MONTREAL.

D. TORRANCE FRASER, WAREHOUSEMAN,

OFFICE : 15 HOSPITAL STREET,

MONTREAL,

WAREHOUSES : 15 and 17 Hospital Street, 67, 68, 69, 70
Common Street, and 2, 4, 6 Queen Street.

*V. R. BONDS, Nos. 6 and 44.

MACFARLANE & CO.,

Steam Saw & Planing Mills,

Trunk and Box Factory,

409 to 421 Richmond Street,

MONTREAL.

GODFROI CHAPLEAU,

Dominion Safe Manufactory.

Burglar-Proof and Fire and Burglar-Proof Safes.

SILVER MEDAL
AT THE
CENTENNIAL
EXHIBITION,
PHILADELPHIA,
1876.



FIRST PRIZE AT THE
Provincial Exhibition
OF 1873.11
MONTREAL.

FIRST PRIZE AT THE
Provincial Exhibition
Of 1875, OTTAWA.

The Safes I manufacture, justly considered at present as the best ever offered to the public, combine all the qualities required as to strength and safety. In order to avoid moisture in the interior of the Safe, and offer the greatest possible resistance in case of fire, an air space has been secured between the Iron sheets which form the envelope or frame of the Safe.

The hinges are not of Cast, but Wrought Iron, resting on a solid base of Steel with aperture in order to remove the doors in case they should in time require any repairs. This improvement gives an undoubted superiority over all other Safes.

These Safes are all they are represented to be, and a visit to my Factory will convince every thinking man of the truth of what I affirm.

I also Manufacture to order

Iron Vault Linings, Burglar-Proof Vault Doors, Fire-Proof Doors.

Iron Shutters, Iron Doors for Public Buildings, Messengers' Chests and Deed Boxes, Cell Doors and Gratings, Jail, Safe, Bank and Store-door Locks, Iron Beams and Iron Bridges, &c.

A large number of Second-hand Safes of different makes always on hand, which will be sold CHEAP.

Also, Manufacturer of
STONECUTTERS' TOOLS.

OFFICE: 320 ST. LAWRENCE STREET.

WORKS: Corner of Ontario and St. Charles Borromea Streets,

MONTREAL.

James E. Westman

DESIGNER
and Engraver
FINE TYPE METAL
625 CRAIG STREET
MONTREAL

The Best quality of work at the most reasonable prices.

W. A. C. H. E. N. E. R. E. F.

I am able to produce Engravings of all kinds of Machinery, Stoves, Pianos, Melodions, Agricultural implements, &c. &c. for Catalogues, Circulars, Advertisements or other purposes. Architectural work in the best manner; Etos; Fronts, Views of Manufactories, Hotels, or Streets; Engraved from Photographs or Sketches. Labels for Manufactories and Druggists; Bill-heads, Letter-heads, Ornamental Work, Borders of every description, Shipping and Show Cards, &c., &c.

Illustrations for Newspapers with the promptness the Press demands.

Color Brands, Electrotyping and Stereotyping at Shortest Notice.

No Apprentice work delivered.

J. EMERY-CODERRE, M.D.

Over 30 Years' Experience.

DR. J. EMERY-CODERRE'S

(Professor of Materia Medica and Therapeutics,)

"EXPECTORATING SYRUP."

Dr. J. Emery-Coderre's Expectorating Syrup is prepared under his direction and with the approbation of the Professors of the School of Medicine and Surgery of Montreal, Medical Faculty of Victoria University. For the last 30 years the Expectorant Syrup has been administered with the greatest success in Coughs, Bronchitis, Catarrh, affections of the Lungs, Hooping-Cough, Croup—in the latter case it is necessary to take heat as a emetic, &c., &c.

DR. J. EMERY-CODERRE INFANTS' SYRUP.

"THE INFANTS' SYRUP" is prepared with the approbation of the Professors of the Montreal School of Medicine and Surgery, Medical Faculty of Victoria College. This Syrup can be given in all confidence to infants, in cases such as Colic, Diarrhoea, Dysentery, Painful Dentition, inability to sleep, Coughs, Colds, &c., &c.

DR. J. EMERY-CODERRE'S TONIC ELIXIR.

The Tonic Elixir is prepared under the immediate direction of Dr. J. Emery-Coderre, and has been administered with the greatest success for more than 30 years, in diseases requiring the use of tonics. Its use can be continued without any inconvenience, in complaints such as Chlorosis or Green Sickness; Leucorrhoea, or Whites; Dysmenorrhoea, or difficult courses; Anemia, or thinness of the blood; General Debility, Involuntary Seminal Losses, Scrophulous, Ringworm, and other Diseases of the Skin, &c., &c.

CERTIFICATES.

We, the undersigned Physicians, after carefully examining the composition of the Expectorant Syrup of J. Emery-Coderre, M.D., certify that it is prepared with Medical Substances suitable for the treatment of diseases requiring the use of Expectorants.

We, the undersigned Physicians, after carefully examining the composition of the Infants' Syrup, certify that it is prepared with proper Medical substances for the treatment of Infants' Complaints, such as Colic, Diarrhoea, Dysentery, Painful Dentition, Coughs, Colds, &c., &c.

We, the undersigned Physicians, after having examined the composition of the Tonic Elixir, as above, certify that it is prepared with Medical substances for the treatment of diseases requiring the combined use of tonic and alterant agents.

E. H. TRUDEL, M.D.,

Prof. of Midwifery and of Women's and Children's Complaints.

J. G. BIBAUD, M.D.,

Professor of Anatomy.

F. A. C. MUNROE, M.D.,

Professor of Surgery.

HECTOR PELTIER, M.D.,

Professor of Institutes of Medicine.

P. BEAUBIEN, M.D.,

Professor of Theory and Practice of Medicine.

THOS. D'ODET D'ORSONNENS, M.D.,

Professor of Chemistry and Pharmacy.

J. P. ROTTOT, M.D.,

Professor of Medical Jurisprudence and Botany.

FOR SALE AT THE PRINCIPAL DRUGGISTS.

The Medical Profession may obtain from Dr. Coderre all information required on the nature and administration of these Remedies at No. 64 St. Denis Street, Corner Dorchester, Montreal.

R. H. BRAND,

DEALER IN

BILLIARD, BAGATELLE AND PIGEON HOLE TABLES.



12 Carom and 2 Pool Tables on Exhibition.
Old Tables bought and sold. Always on hand
a large stock of Cues, Balls, Chalk, Tips, Cutters,
&c., &c., for cheap sale.

Nordheimer's Hall,
207 ST. JAMES STREET,

MONTREAL.

A. GERMAINS, Practical Russian Furrier,

Hatter and General Dealer.

All Fur Work done to Order and Repaired at the shortest notice. Best
Workmanship Guaranteed.

983 ST. CATHERINE STREET, MONTREAL.



SAMUEL CULLEY, Horse Shoer.

Horses carefully shod by first-class Workmen.

Jobbing and Wheelwright. Also
Waggons and Carts Made
and repaired.


All Parties Wanting good Work will call.

19 and 21 Lacroix Street, Dalhousie Square.

H. S. BROWN,

Auctioneer and Commission Merchant

412 St. Joseph Street, Montreal.

 Advances made on all kinds of Merchandise.

Best stand in the West End for the disposal of all kinds of Goods. Returns
promptly made. Consignments and out-door sales solicited.

MORLAND, WATSON & CO.,
Iron & Hardware
MERCHANTS.

AND MANUFACTURERS OF ALL DESCRIPTIONS OF

SAWS, AXES AND EDGE TOOLS.

Spades and Shovels, (Lowman's Patent,) Cut Nails, Horse Nails, Horse Shoes, Tacks, Paints, Lead Pipe, Shot, Leather and Rubber Belting, Planes, and all descriptions of Heavy and Shelf Hardware.

Montreal Saw Works. Montreal Axe Works. Montreal Shovel Works.

385 and 387 ST. PAUL STREET, - - - MONTREAL.

OCEAN EXPRESS CO.,
 OF LONDON.

HEAD OFFICES IN LONDON:—56 King William Street, City, E. C.; 4 and 5
 Agar Street, Strand, W. C.; 40 Regent Circus, W. C.

LIVERPOOL:—4 India Buildings. DUBLIN:—32 Edon Quay.

MONTREAL, - - - 32 ST. FRANCOIS XAVIER STREET
 T. MAXWELL BRYSON & CO., AGENTS.

O. L. FULLER,
ADVERTISING AGENT,

150 Sanguinet Street,

ST. JEAN BAPTISTE VILLAGE.

Reference, by permission, to the Lovell Printing and Publishing
 Company.

DENNISON & CO.

TAG MANUFACTURERS

AND MANUFACTURING STATIONERS,

Boston, New York, Philadelphia, Chicago, Cincinnati, and St. Louis.

MANUFACTURE

DENNISON'S PATENT

SHIPPING TAGS,

DENNISON'S TOURISTS' TAGS FOR TRAVELERS,
of every variety, and for every conceivable use.

Standard Merchandise Tags; Tourists' Tags; Stratten's Gummed Labels, and Gummed Paper of all colors; Legal and Notarial Seals; Folding and Fancy Tickets; Mendenhall's Patent Suspension Rings; Dennison's Restaurant and Barber's Checks; Game Counters; Wedding Cake Boxes; Visiting and Playing Card Cases, etc., etc.

STAR COPYING PADS,

Used with ordinary Copying Press and Book, and superior to all other devices for the copying of Letters.

PHILLIPS AND STEVENS' HOOK AND CLASP

TAGS; KIMBALL'S SELF-FASTENING TIOULETS; ANDERSON'S IMPROVED SUSPENSION
HOOKS; POSTAL ENVELOPES; HOGILL'S PAPER FASTENERS; HORTON'S
RUBBER BANDS; "GLOBE," AND CENTENNIAL PRIZE "EXCEL-
SIOR" TISSUE PAPERS.

JEWELLERS' BOXES,

JEWELLERS' CARDS, PINK AND WHITE COTTON, FINE
TWINES, ETC.

DRUGGISTS' BOXES,

Apothecaries' Powder Papers and Counter Papers; Dennison's Shaving
Papers.

All of our goods are for sale by dealers everywhere, and by

DENNISON & CO.,

19 Milk Street,

BOSTON.

AND AT BRANCHES OF OUR HOUSE AS ABOVE.

CAPITAL PAID UP . . . \$1,600,000.

St. James Street, Montreal.

BOARD OF DIRECTORS :

C. S. CHERRIER, Esq., President, O. J. COURSOL, Esq., Vice-President.
G. S. BRUH, Esq., WILLIAM FRANCIS, Esq., G. R. FABRE, Esq.,
A. PREVOST, Esq., A. LEOLAIRE, Esq.,
A. A. TROTTIER, Cashier.

AGENTS:—LONDON, Glyn, Mills, Currie & Co.; New York, National Bank
of the Republic; QUEBEC, La Banque Nationale.

Twelve Medals at the Universal Exhibition.

First Prize (Médaille de Progrès at the Vienna Exhibition, 1873.

First Prize at Philadelphia Exhibition, 1876.

F. ARBEY.

MECHANICAL ENGINEER,

41 COURS DE VINCENNES, 41

(Near the Place du Trône.)

PARIS, FRANCE.

BUILDER OF SAW MILLS.

Manufacturer of all kinds of Saws, and Machinery used in the construction
of Arsenals, Railroads, &c.

Manufacturer of Tools used by Engineers, Builders, Lumbermen, Wagonmakers,
Joiners, Carriage-makers, Coopers, &c., &c.

Illustrated Catalogue, in French, or Foreign, forwarded on application, (enclosing 3
francs, in French or Foreign postage stamps.

BANK OF MONTREAL.

(Established 1818.)

INCORPORATED BY ACT OF PARLIAMENT.

CAPITAL AUTHORIZED	112,000,000
CAPITAL PAID UP	11,992,300
RESERVE FUND	5,500,000

Head Office—Montreal.

BOARD OF DIRECTORS.

GEORGE STEPHEN, Esq., <i>President.</i>	G. W. CAMPBELL, Esq., M.D., <i>Vice-President.</i>
HON. T. RYAN, P. REDPATH, Esq.,	HON. D. A. SMITH, EDWARD HARGREY, Esq.,
	GILBERT SCOTT, Esq., SIR A. T. GALT, K.C.M.G.
	ALLAN GILMOUR, Esq.
	R. B. ANGUS, Esq., <i>General Manager.</i>

Branches and Agencies in Canada.

MONTREAL.—W. J. BUCHANAN, Esq., *Manager.*

QUEBEC, TORONTO, HAMILTON, ST. JOHN, N.B., HALIFAX, N.S., OTTAWA, LONDON,	KINGSTON, BRANTFORD, BRIDGMILL, BELLEVILLE, COBURG, GUELPH, ST. MARYS,	PART HOPE, PETERBORO, GODFRICH, STRATFORD, BARNIA, PITON, PERTH,	CORNWALL, LINDSAY, FERGUS, OSHAWA, NEWCASTLE, N.B., MONCTON, N.B., CHATHAM, N.B.
---	--	--	--

A. MACNIDER, Esq., *Inspector.*

Agents in Great Britain.

LONDON, BANK OF MONTREAL, 9 BIRCHIN LANE, LOMBARD STREET.

A. ASHWORTH, Esq., *Secretary.*

LONDON COMMITTEE.

ROBERT GILLESPIE, Esq.,	SIR JOHN ROSE, Bart., K.C.M.G.
-------------------------	--------------------------------

Bankers in Great Britain.

LONDON, THE BANK OF ENGLAND, " THE UNION BANK OF LONDON, " THE LONDON & WESTMINSTER BANK,	LIVERPOOL, THE BANK OF LIVERPOOL, SCOTLAND, THE BRITISH LINEN COY'S AND BRANCHES.
---	---

Agents in the United States.

NEW YORK, O. F. SMITHERS and W. WATSON, 59 Wall Street.

CHICAGO, BANK OF MONTREAL, 104 Madison Street.

Bankers in the United States.

NEW YORK, THE BANK OF NEW YORK, N.B.A., " THE MERCHANTS NATIONAL BANK,	BUFFALO, THE FARMERS AND MECHANICS NATIONAL BANK.
BOSTON, THE MERCHANTS NATIONAL BANK.	SAN FRANCISCO, THE BANK OF BRITISH COLUMBIA.

Colonial and Foreign Correspondents.

ST. JOHN'S Nfld., THE UNION BANK OF NEWFOUNDLAND.	INDIA, CHINA, JAPAN, AUSTRALIA.	ORIENTAL BANK CORPORATION.
BRITISH COLUMBIA, THE BANK OF BRITISH COLUMBIA.		
NEW ZEALAND, THE BANK OF NEW ZEALAND.		

MONTREAL, JUNE, 1877.

MERCHANTS' BANK OF CANADA.

Incorporated and Acting under Statutes of the Province and of the Dominion of Canada.

AUTHORISED CAPITAL - - - - \$9,000,000.

Head Office, Montreal.

HON. JOHN HAMILTON, *President.* JNO. McLENNAN, Esq., *Vice President.*

DAMASE MASSON, Esq.
ANDREW ALLAN, Esq.
ROBERT ANDERSON.

SIR HUGH ALLAN.
HECTOR MACKENZIE, Esq.

GEORGE HAGUE, *General Manager.*

NEW YORK AGENCY, No. 62 Wall Street, New York.

WILLIAM J. DE B. INGRAM and JAMES GOLDIE, *Agents.*

LONDON AGENCY, No. 32 Lombard Street, E. C.

COMMITTEE OF MANAGEMENT:

SIR WM. J. W. BAYNES, *Chairman.*

HUGH E. MONTGOMERIE, Esq. | THOS. D. MILBURNE, Esq.

HUGH MUIR, *Manager.*

BRANCHES AND AGENCIES IN CANADA.

ALMONTE, Ontario	GRANBY, Quebec	ORANGEVILLE, Ont.	ST. THOMAS, ONT.
BEAUHARNOIS, Que.	HAMILTON, Ontario	OTTAWA,	" SOREL, Quebec
BELLEVILLE, Ont.	INGERSOLL, "	OWEN SOUND,	" STRATFORD, Ontario
BERLIN,	" KINCARDINE, "	PEMBROKE,	" TORONTO, "
BRAMPTON,	" KINGSTON, "	PERTH,	" WALKERTON, "
CHATHAM,	" LEVIS, Quebec	PRESCOTT,	" WATERLOO, "
ELORA,	" LONDON, Ontario	RENFREW,	" WINDSOR, "
GALT,	" MITCHELL, "	ST. HYACINTHE, Que.	WINNIPEG, Manitoba
GANANOQUE,	" NAPANEE, "	ST. JOHNS,	"

LONDON BANKERS.

LONDON JOINT STOCK BANK.

AGENTS.

NEW YORK	- - -	NATIONAL BANK OF THE REPUBLIC, AND BANK OF THE STATE OF NEW YORK.
IRELAND	- - -	PROVINCIAL BANK OF IRELAND.
LIVERPOOL	- - -	LIVERPOOL COMMERCIAL BANK, LIMITED.
MANCHESTER	- - -	MANCHESTER AND COUNTY BANK, LIMITED.
PARIS	- - -	GUSTAVE BOSSANGE, ESQ.

MIGHT & TAYLOR
Directory Publishers

AND

GENERAL AGENTS.

Publishers annually of

THE TORONTO DIRECTORY.

DIRECTORIES OF ALL THE LEADING CITIES IN

Europe, United States & Canada,

kept on hand, for use of the public, free of charge.

Patentees and Manufacturers of the M. and T.,
Self-feeding Pen-Holder,

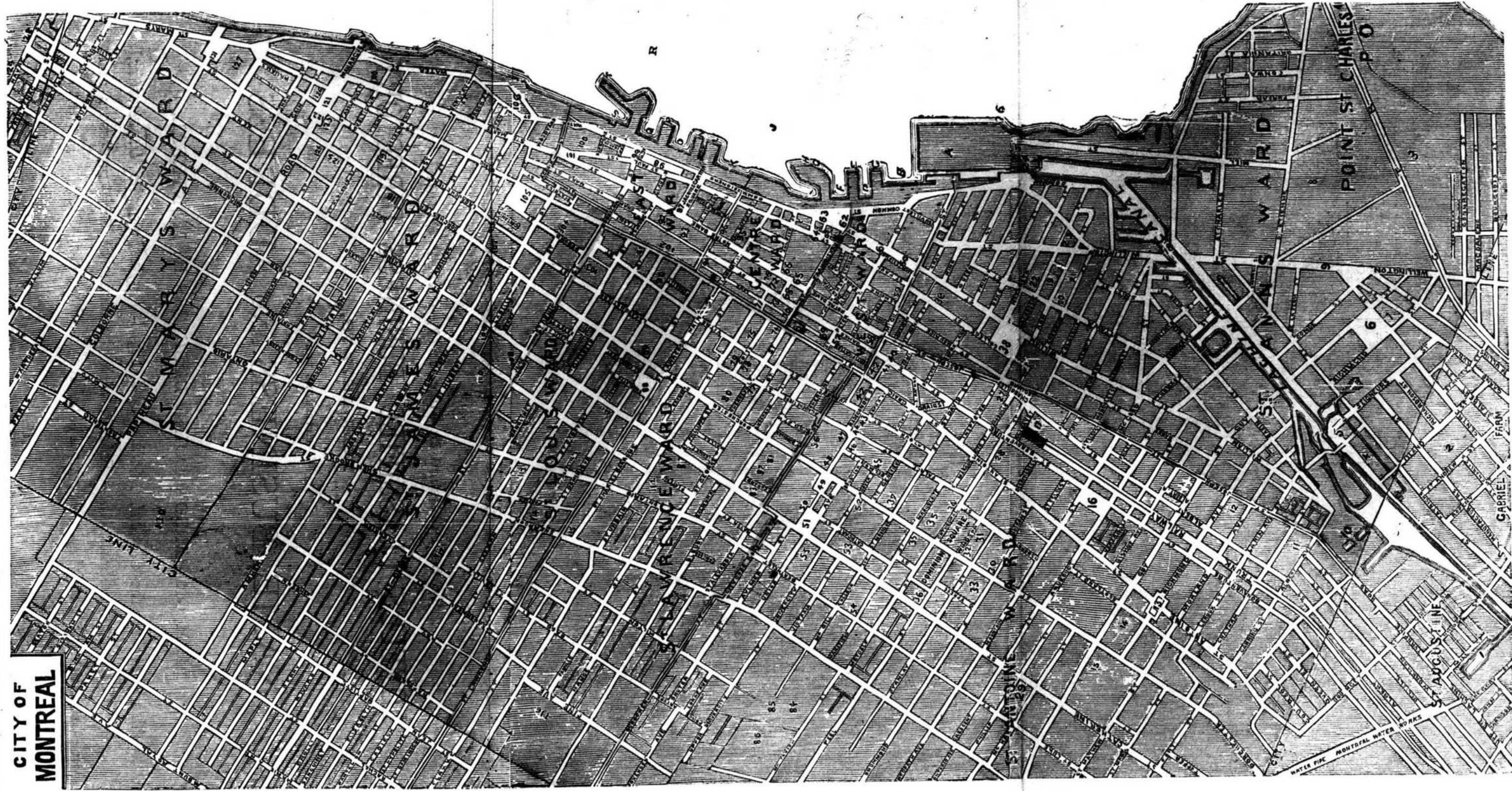
26 ADELAIDE STREET, EAST,

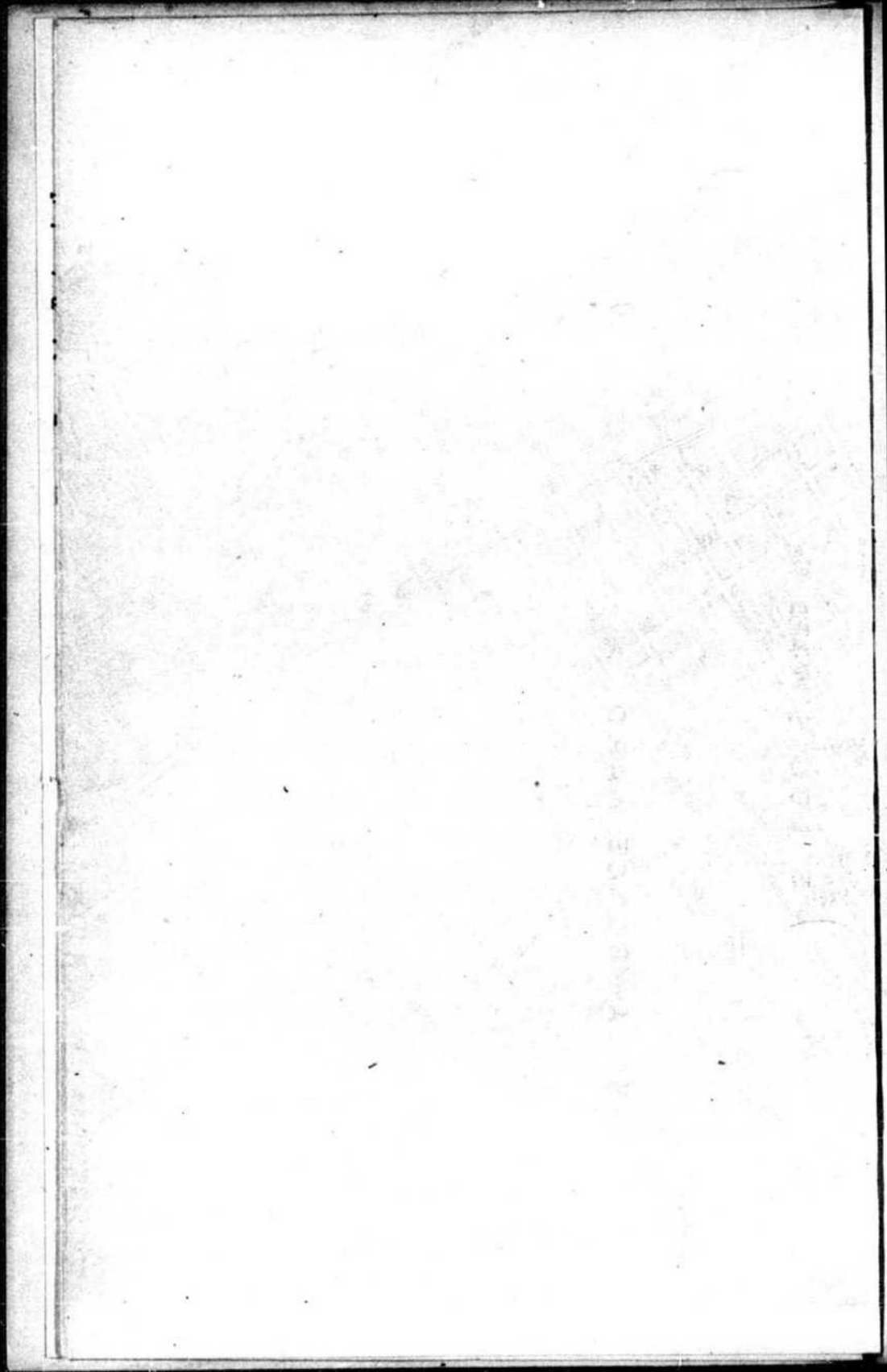
(Near Post Office.)

TORONTO.

Lovell's Classified Business Directory contains the Names, Business and Address of every Firm or Person doing Business in the

**CITY OF
MONTREAL**





LOVELL'S

MONTREAL DIRECTORY,

FOR 1877-78:

CONTAINING AN

ALPHABETICAL DIRECTORY OF THE CITIZENS,

A

STREET DIRECTORY,

AN

ADVERTISERS CLASSIFIED BUSINESS DIRECTORY,

AND A

MISCELLANEOUS DIRECTORY,

TO WHICH IS ADDED

Directories of Coteau St. Louis, Coteau St. Pierre, Cote des Neiges, Cote St. Antoine, Cote St. Luc, Cote St. Paul, Cote Visitation, Hochelaga, Lachine, Long Point, Longueuil, Mount Royal Avenue, Mount Royal Vale, Notre Dame de Grace, Outremont, St. Jean Baptiste Village, St. Lambert, Town of St. Cunegonde, Town of St. Henry, and Verdun.

CORRECTED TO JUNE 20TH, 1878.

PRICE, \$2.50.

Montreal:

PUBLISHED BY LOVELL PRINTING AND PUBLISHING COMPANY.

ST. NICHOLAS STREET.

CONTENTS.

	PAGE
Addenda,	24
Advertisers Business Classified Directory,.....	85
Alphabetical Directory of Citizens,.....	267
Index to Miscellaneous,.....	03
Index to Streets, Avenues, Squares, Terraces, Places and Lanes,.....	26
Miscellaneous Directory of Banks, Benevolent and Religious Societies,....	
Churches, Corporations, Newspapers, Post Office, Railways,	
Steamers, &c., &c.,.....	755
Preface,	25
Street Directory,.....	97

PLACES IN THE NEIGHBORHOOD OF MONTREAL, OUTSIDE CITY LIMITS.

Coteau St. Louis..... 687	Longueuil 709
Coteau St. Pierre..... 691	Mount Royal avenue..... 715
Côte des Neiges..... 692	Mount Royal vale..... 715
Côte St. Antoine..... 694	Notre Dame de Grâce..... 716
Côte St. Luc..... 695	Outremont..... 716
Côte St. Paul..... 695	St. Jean Baptiste village..... 717
Côte Visitation..... 697	St. Lambert..... 731
Hochelaga..... 698	Town of St Cunegonde..... 732
Lachine..... 701	Town of St. Henry..... 742
Long Point..... 708	Verdun..... 753



MEILLEUR & CO.,

(Successors to RODDEN & MEILLEUR.)

Manufacturers and Dealers in

STOVES, TINWARE,

AND

General House Furnishings,

REMOVED FURTHER WEST TO

652 Craig Street, near Bleury St.,

MONTREAL.

COOKING, PARLOR AND HALL STOVES,

European and American Kitchen Ranges, Family and Hotel Sizes,

Tinned & Enamelled Hollow-ware,

Wringers and Washing Machines,

IRON BEDSTEADS, CRIBS, CRADLES,

*Hall Chairs, Hat, Coat, and Umbrella Stands, Iron Garden Furniture, Fountains,
Vases, Chairs, Settees, &c., &c., &c.,*

STAIR RODS, WINDOW CORNICES, ICE CREAM FREEZERS,

Butter Churns, Refrigerators,

WHOLESALE AND RETAIL.

ICE CHESTS AND WIRE MEAT SAFES

OF THE LATEST AND MOST APPROVED PATTERNS,

SECURED BY LETTERS PATENT.

ADDENDA.

ALARIE J. BTE., manufacturer of threshing, mowing and reaping machines, &c., 71 and 73 Duke, h 189 St Charles Borromée

ALLAN ROBERT, lumber and wood merchant, 2 Atwater av, facing Lachine canal, Town of St Henry

ARAHILL M., & CO., groceries, provisions, &c., 135 Wellington

ARMSTRONG G. E., M.D., physician and surgeon and accoucheur, 519 St Joseph

BAKER S. J., hosier, glover, and practical shirt maker, Association building, Victoria sq., h 70 St Denis. *See Adv foot and side lines outside front cover*

Bélangier Narcisse, of Vinet, Bélanger & Vinet, 827 St Catherine

BOHRER HENRY, pianist, Ottawa hotel, 246 St James

BOHRER MADAME CHATTERTON, harpiste, Ottawa hotel, 246 St James

BROOKS THOMAS, tallow chandler, 332 Panet, h 13 Nonancourt

BROWN H. S., auctioneer and commission merchant, 412 St Joseph, h 97 Mansfield. *See Adv p 11*

BUCKLEY W. C., secretary St George's Y.M.C.A., 2 Overdale av

BURLAND W. H., M.D., assistant surgeon Montreal General hospital, 422 Dorchester, h 85 Upper St Urbain

CAMPBELL REV. J. L., minister St Catherine Street Baptist church, cor St Catherine and City Councillors

CHARLEBOIS EDOUARD, manager Eagle hotel, 186 St Henry, Town of St Henry

Corriveau A. J., bookkeeper, 505 St Paul, h 177 St Denis

CRAIG J. A. L., furniture manufacturer, sawing, planing and moulding, 473 to 483 St Bonaventure, h 472 St Bonaventure

CREVIER ZEPHIRIN, tinsmith and plumber, stoves, tinware, &c., 57 St Joseph, h 305 Lafontaine

CROWE MRS. B., ladies' and children's under-clothing 374 Notre Dame, h 150 Ottawa

DANDURAND GEDIPPE, commissioner, assisnee, &c., 59 St François Xavier, h 17 Beaver Hall terrace

DESCHAMPS JOSEPH H., hotel, 289 St Henry, Town of St Henry

DESBARATS GEORGE E., publisher, engraver, lithographer and printer, Old Post Office building, 116 St François Xavier, h 218 St Denis

DESCHAMPS JOSEPH H., hotelkeeper, 287 and 289 St Henry, Town of St Henry
Doherty Thomas, fancy and staple dry goods, 438 St Joseph, h 10 Berthelet

DONOVAN & MORAN, tanners and leather dealers, 26 Lemoine, tannery 142 Amherst and 171 and 173 Jacques Cartier

FEILDERS GEORGE B.,
MERCHANT TAILOR,
17½ Lemoine, h 66 St George

Finlan J. W., bookkeeper, bds at 10½ St Radegonde

Forget L. J., of L. J. Forget & Co., 216 St Denis

Geen James, carpenter, 31 St Genevieve

HERBERT & CO., family grocers, wine and spirit merchants, 20 St. Radegonde.

Leveillé, Budd & Ferland, glass veneers, 207 Notre Dame

Macaulay J. R., clerk G.T.R., 1130 Dorchester

Macbrair Alexander, auditor accountant, teacher of bookkeeping, 207 McGill, h 414 Seigneurs

MCKENZIE A.,
MERCHANT TAILOR AND HABER-DASHER; all orders promptly executed;
94 St Joseph

Masterton A. J., clerk G.T.R., 74 Duke

MAYNARD GEORGE, clerk, 115 Dalhousie

Mearns John, of Mearns Bros., bds at American house, 22 St Joseph

Monsell W. H., of Herbert & Co., 43 St Constant.

Morgan F. A., clerk G.T.R., Bourgeois

Simpson Andrew J., commissioner for affidavits, office of Dupuy, Taylor & Duff, 353 Notre Dame

URQUHART JAMES K., general merchant, 32 and 34 St Sacramento, h 28 Mance

PREFACE.

THE PUBLISHERS have much pleasure in submitting herewith the **MONTREAL DIRECTORY** for 1877-78, and trust it will meet the approval of subscribers and advertisers. The difficulty of securing thoroughly reliable agents necessitates, in a large number of cases, the revision of their work. To some this repetition may have proved somewhat annoying, but by no other means could correctness be secured.

It will be noticed that the usual classification of subscribers and advertisers is, in the present issue, confined to advertisers. The omission will be readily understood and excused when the Publishers announce that a separate volume will presently be issued under the title of

LOVELL'S CLASSIFIED BUSINESS DIRECTORY.

The Business Directory will contain a complete classification, under their respective profession, business or trade, of every person doing business in this city, as well as a large amount of valuable Miscellaneous information. It is the intention of the Publishers to canvass the Dominion for subscribers to this Directory, and, as the price is only \$1.00, there can be no doubt an immense circulation will be secured. It is intended, moreover, to place a copy in every leading hotel and manufactory in the cities and towns of the Dominion.

With so widespread a circulation, and the exceedingly comprehensive range of the classification—for heads of which see pages 69 to 94—a wide publicity is assured to business men throughout the Dominion.

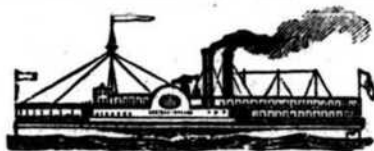
In this issue will be found a small **PLAN** with **KEY**, indicating the position of the important points in the city. For a large portion of this Plan we are indebted to Mr. G. N. TACKABURY, the material being taken from the admirable plan contained in TACKABURY'S **ATLAS OF THE DOMINION OF CANADA**.

The Publishers have to thank subscribers and advertisers for their continued generous support, and beg also to acknowledge the courtesy of those to whom they are indebted for the large volume of Miscellaneous information contained in the Directory.

MONTREAL, June 28, 1877.

OTTAWA RIVER NAVIGATION CO.'S

ROYAL MAIL LINE OF STEAMERS.



MONTREAL TO OTTAWA---DAY AND NIGHT LINE.

New Iron Steamer PEERLESS ,	Capt. A. BOWIE.
Steamer PRINCE OF WALES ,	Capt. H. W. SHEPHERD.
“ QUEEN VICTORIA ,	Capt. T. SIMMONDS.
“ PRINCESS ,	Capt. P. MCGOWAN.

UPWARDS.—Passengers leave by the 7 A.M. and the 5 P.M. Trains for Lachine by Railway, and connect with Steamers “Prince of Wales” and “Princess” for Ottawa and intermediate landings.

DOWNWARDS.—Passengers leave Ottawa at 7 A.M. and 5 P.M. by Steamers “Peerless” or “Queen Victoria” for Montreal and intermediate landings.

Market Steamer “Dagmar,” Capt. Rigby, leaves Canal Basin every Wednesday and Saturday, at 6 A.M., for Carillon and intermediate ports. Returning, leaves Carillon every Monday and Thursday at 6 A.M.

Baggage Checked, Meals and State Rooms Extra.

Passengers leaving Ottawa by the evening Steamer will descend the Rapids. No Through Passengers taken on Saturday Evening boat.

The Comfort and Economy of this Line are unsurpassed, whilst the route is one of the most picturesque in Canada. Tourists will find this a delightful trip.

Freight for all points on the Ottawa sent through with despatch.

Single, Return and Excursion Tickets for Parties may be had at the Company's Office, 13 St. Bonaventure Street; at the Grand Trunk Depot, Montreal; and the Office, Queen's Wharf, Ottawa.

R. W. SHEPHERD, *President.*

WESTERN EXPRESS LINE,

1877



1877

CONSISTING OF 13 FIRST-CLASS PROPELLERS,

For the Carriage of Passengers and Freight to all Western Ports,

Connecting at HAMILTON and TORONTO with all Railways, and at WINDSOR with Ward's Central and Pacific Lake Company for DULUTH and MANITOBA.

Calling at Kingston, Toronto, Hamilton, St. Catharines, Welland, Thorold, Port Robinson, Port Colborne, Port Dover, (connecting with Pt. D. & L. H. R.R. for Stratford and intermediate Stations) Port Burwell, Port Stanley, Amherstburg, Toledo, Cleveland, Windsor, Walkerville, Detroit, Milwaukee, Chicago and Duluth.

THIS IS THE LARGEST LINE OF PROPELLERS ON THE ROUTE.

WM. MACAULAY, *Agent.*

93 COMMON STREET AND CANAL WHARF.

T. McILWRAITH, HAMILTON.

SYLVESTER BROS. & HICKMAN, TORONTO.