



PARC NATIONAL D'AIGUEBELLE

NEW

YOUR FIRST STEP

Your first step to explore Aigüebelle : a Discovery center and services revived, connected and welcoming!



ON THE WATER

Just the challenge you're looking for : stand above the water of enticing lac Loïs with friends and have a great time on the new paddle boards.



ALL PLAY, NO WORK

Breathless laughter of children who run to conquer the playground. With soft landing on the sand of camping Abijévis.



WELCOME

QUÉBEC
NATIONAL PARKS DAY

SEPTEMBER 10,
2016

EXPLORE NATURE AT ITS FINEST

The national parks in the Parcs Québec network provide a unique opportunity to enjoy nature at its finest.

The entry fee you're required to pay is your contribution to the development and conservation of these territories.

FREE ADMISSION FOR CHILDREN 17 YEARS AND UNDER

Daily entry fee - Adults 18 years and over	\$8.50
Annual Network Card	\$76.50
Annual Park Card	\$42.50

Rates valid until December 31, 2016, taxes included. See complete fee schedule at parcsquebec.com/card

ANNUAL PARCS QUÉBEC NETWORK CARD

Unlimited access to all national parks in the Parcs Québec network for 12 months and an array of exclusive benefits:

- ONE FREE NIGHT OF CAMPING (semi-serviced site, on weekdays only)
- ONE DAY PASS for a friend
- BOUTIQUE NATURE SHOPS 15% off regular-priced items*
- CROSS-COUNTRY SKIING 15% off a day ticket
- AQUARIUM DU QUÉBEC 15% off daily admission
- PARC NATIONAL DU MONT-MÉGANTIC 15% off admission to the ASTROLab
- PARC NATIONAL DE MIGUASHA 15% off admission to the Museum

Certain conditions apply.
*Excluding convenience store products and ski products.

Details at parcsquebec.com/card

CONTEST DESTINATION PARCS NUNAVIK

Between April 1 and September 1, 2016, when you purchase or renew your Annual Network Card, you could win a stay for 2 in a national park of Nunavik.

A \$10,000 VALUE!

A choice among 3 destinations to explore at parcsnunavik.ca:

- Parc national des Pingualuit
- Parc national Tursujuq
- Parc national Kuururjuaq

Details and contest rules at parcsquebec.com/contest



THE MUST-SEES

TRAVEL BACK BILLIONS OF YEARS, WHERE THE WATERS PART

Discover impressive geological and geomorphological phenomena through the eskers, volcanic cushions, boulders and giant's cauldron. Two majestic rift lakes, Sault and La Haie are located on either side of the water divide between the watershed of James Bay and the St. Lawrence River.

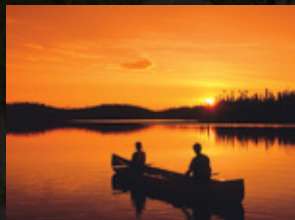
L'ESCALADE

"La Trompeuse", one of the highest peaks in Abitibi, reveals its secret through the trail "L'Escalade". Admire the immeasurable.



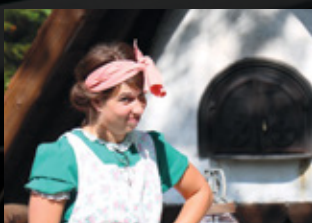
A MATISSARD EVENING

By canoe, sail through the Matissard Lake in the golden sunset. Can you hear the wildlife of the lake in full swing?



BACK IN THE GOOD OL'DAYS

For bread and gossip, Ms. Hudon is unparalleled. Come to the bread oven and learn everything about the life of the pioneers of the village.



LOÏS LAC BY KAYAK

The water, the sky and the peace, Loïs Lake is sure to warm the hearts of all lovers of the great outdoors.



ACTIVITIES AND EQUIPMENT RENTAL

FISHING DAY

You'll soon be getting lots of bites from trout either on the shore or boat.

Starting at
18,13\$/per person



EQUIPMENT RENTAL

EQUIPMENT	FULL DAY	4 h	1 h
Paddle boat		32,50 \$	16,25 \$
Four-seater aluminum paddle boat		44,75 \$	23,75 \$
Boat	42,50 \$	29,75 \$	14,75 \$
Canoe	47,00 \$	33,25 \$	16,50 \$
Single kayak	48,25 \$	33,75 \$	16,75 \$
Double kayak	64,50 \$	45,25 \$	22,75 \$
Single recreational kayak	43,00 \$	30,00 \$	15,00 \$
Double recreational kayak	51,50 \$	36,50 \$	18,25 \$
SUP (Stand up paddle)	41,50 \$	29,00 \$	16,50 \$

THE HISTORIC SITES of Rouyn-Noranda

Magasin général Dumulon – 1924

Summer schedule: every day,
from 8:30 a.m. to 5:00 p.m. in french

Regular schedule: wednesday to friday,
from 10:00 a.m. to 6:00 p.m. in french

191 avenue du Lac

Église orthodoxe russe St-Georges

Summer schedule:
Every day, from 8:30 a.m. to 5:00 p.m. in french

201 rue Taschereau Ouest

English guided tours are only available
by reservation: 819 797-7125
www.maison-dumulon.ca

CORPORATION
de la **MAISON**
DUMULON
Magasin Général Dumulon - Église Orthodoxe Russe



HIKING TRAILS

Reference on the map	DISCOVERY	HIKING TRAILS	LENGTH AND DURATION	ROUND-TRIP	LOOP	DIFFICULTY	POINT OF DEPARTURE
1		La Castorière - Learn about beavers and their lifestyle.	0,8 km 20 min		X	E	Visitor and discovery center
2		La Salamandre - Discover the living world that inhabits the boreal forest.	4 km 2 h	X		I	Visitor and discovery center
3		L'Escalade - Hike to the peak of La Trompeuse hill.	2,5 km 1h30	X		D	La Haie Lake parking area
4		La Traverse - Suspended footbridge over La Haie lake.	3 km 1h30		X	I	La Haie Lake parking area
5		L'Aventurier - Loop around La Haie Lake on rocky escarpments.	9,5 km 5h30		X	D	La Haie Lake parking area
6		Le Garde-Feu - Climbing the fire warden tower and overview of a period of history.	2 km 1 h	X		I	Garde-Feu parking area
7		Le Chemin des Collines - Take the historic path in the Abijevis hills that leads to Patrice lake.	16 km 40 min	X		E	Road 24
8		L'Élan - Panoramic view of Patrice lake and the Abijévis hills.	1,5 km 45 min		X	I	Patrice Lake parking area
9		Les Versants - Succession of valleys and natural viewpoints overlooking the rocky escarpments	11 km 6 h	X		D	Sault Lake parking area
10		Les Paysages - Spiral staircase and rocky escarpments.	2 km 1 h		X	I	Sault Lake parking area
11		Le Petit-Nomade - Wooded trail that winds near Lois Lake.	2 km 1 h		X	E	Taschereau Visitors Center



E - Easy I - Intermediate D - Difficult

PARK PATH EXPLORER : A GUIDE AT YOUR SERVICE DISCOVERY AND VISITORS CENTRE



Parc Parcours is the refinement of microscopic circuits at the service of an enigmatic nature. The Discovery Center and services, developed to optimize of the merger of two worlds, introduces you to this innovative approach that you continue in the forest, guided by your selected course according to your yearning for the day. Nature unfolds before your eyes through the IPod, loaned free for your excursion. Parc Parcours is available before and after your visit to the park or even at home. Technology will never have seemed as thrilling and natural... and Aiguebelle so contemporary!

Société du Loisir Ornithologique de l'Abitibi



Bird watching is a passion to be shared.

To learn more about our activities
or to become a member,
visit our website at www.sloa.ca



P.O. Box 91, Rouyn-Noranda (Québec) J9X 5C1



Camping P. Mercier inc.
10328, chemin de la Plage-Mercier
Quartier Mont-Brun
Rouyn-Noranda (Québec) J0Z 2Y0
Tél.: (819) 637-7262



Looking for a souvenir to take home?
MAKE YOUR WAY TO OUR BOUTIQUE NATURE SHOPS!

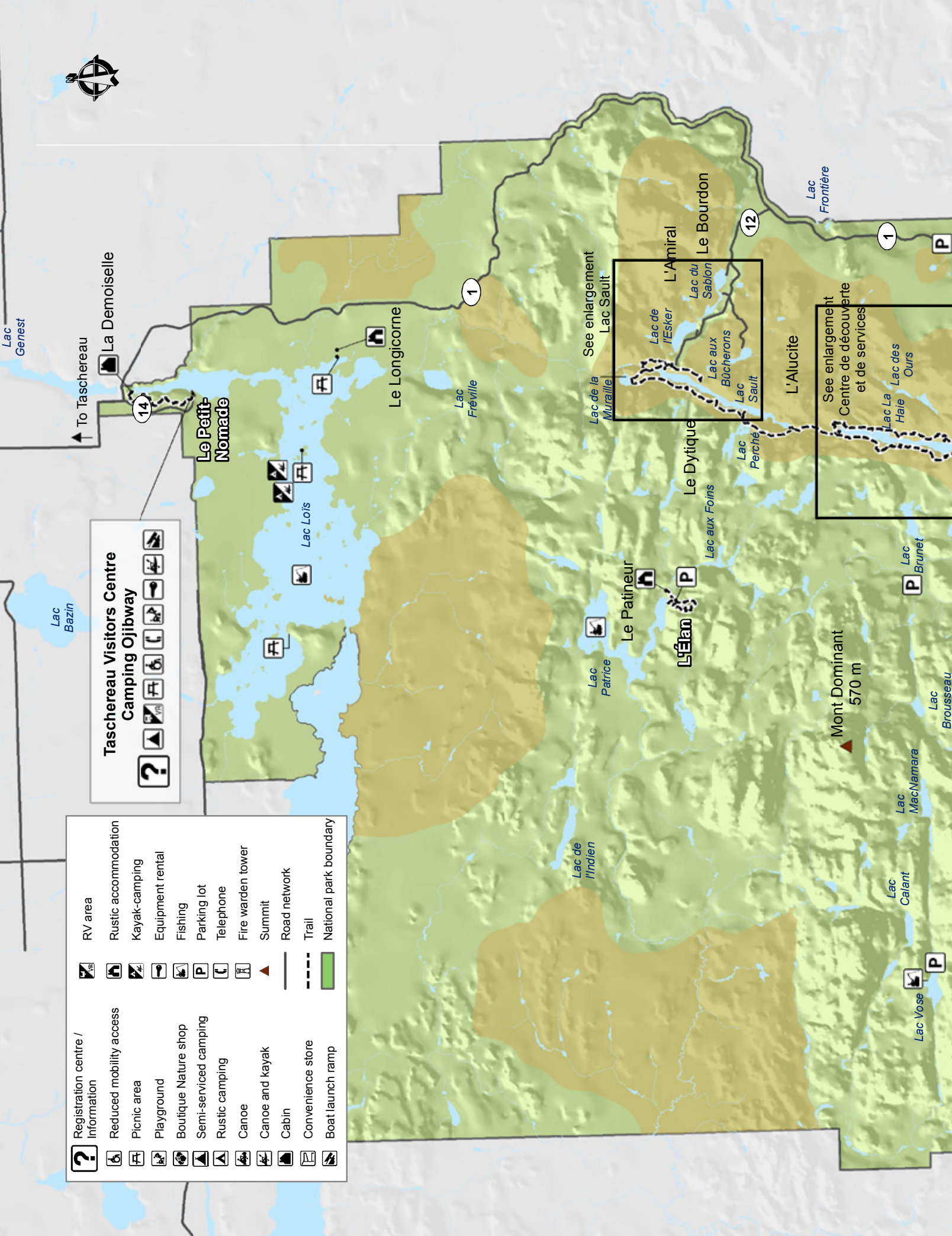
- Wide selection of clothing and items such as tubular scarves, water bottles, etc.
- Souvenirs for kids and grown-ups
- All profits reinvested in national parks





	Registration centre / Information		RV area
	Reduced mobility access		Rustic accommodation
	Picnic area		Kayak-camping
	Playground		Equipment rental
	Boutique Nature shop		Fishing
	Semi-serviced camping		Parking lot
	Rustic camping		Telephone
	Canoe		Fire warden tower
	Canoe and kayak		Summit
	Cabin		Road network
	Convenience store		Trail
	Boat launch ramp		National park boundary

**Taschereau Visitors Centre
Camping Ojibway**



DISCOVERY ACTIVITIES

SUMMER / July 8 to August 21
 Reduced hours on the weekend of 24 June to 3 July and 26 August to 4 September.

Day	Hour	Duration	Activity	Type	Location
Saturday	10:30 AM	30 min	Mix-n'Match	Family	Abijévis Campground's communal room
	1:30 PM	1h30	Rabaska on Pristine Lois Lake \$	Activity on water	Taschereau Visitors Center
	2:30 PM	15 min	Travel Back Billions of Years	Posted	La Traverse trail, at the view point
	4:30 PM	45 min	Engineering and moose	Hosted	Taschereau Visitors Center
Sunday	7:30 PM	1h30	A Matissard Evening \$	Activity on Water	Banks of Matissard Lake
	11 AM	5h	The Le Partage Guided Circuit \$	Hiking and activity on water	Sault lake parking area
	4:30 PM	30 min	Keep Your Eyes and Ears Open	Family	Abijévis Campground's communal room
Monday	7:30 PM	45 min	Tell-Tale of the Fire Ranger	Theatre production	Banks of Matissard Lake
	12 PM to 1:30 PM	15 min	A Field Guide to Wolves, Foxes and Coyotes	Posted	Discovery and Visitors center
	2:30 PM	1h30	Rabaska in a Spectacular Fault \$	Activity on Water	La Haie Lake Canoe Station
Tuesday	7:30 PM	45 min	The Bear Facts!	Hosted activity	Banks of Matissard Lake
	4:30 PM	45 min	Noisette : A nutcase story	Puppet show theatre production	Banks of Matissard Lake
Wednesday	7:30 PM	45 min	Grand jeu Parcs Québec (French only)	Hosted	Banks of Matissard Lake
	12 PM to 1:30 PM	15 min	A Field Guide to Wolves, Foxes and Coyotes	Posted	Discovery and Visitors center
Thursday	2:30 PM	1h30	Rabaska in a Spectacular Fault \$	Activity on Water	La Haie Lake Canoe Station
	10:30 AM	30 min	Keep Your Eyes and Ears Open	Family	Abijévis Campground's communal room
Friday	4:30 PM	45 min	Back in the Good Ol' Days	Theatre production	Abijévis Campground's communal room
	12 PM to 1:30 PM	15 min	A Field Guide to Wolves, Foxes and Coyotes	Posted	Discovery and Visitors center
	2:30 PM	1h30	Rabaska in a Spectacular Fault \$	Activity on Water	La Haie Lake Canoe Station
	4:30 PM	45 min	Noisette : A nutcase story	Puppet show theatre production	Banks of Matissard Lake
	At the sunset**	45 min	Light over the stars	Hosted activity	Abijévis campground's communal room

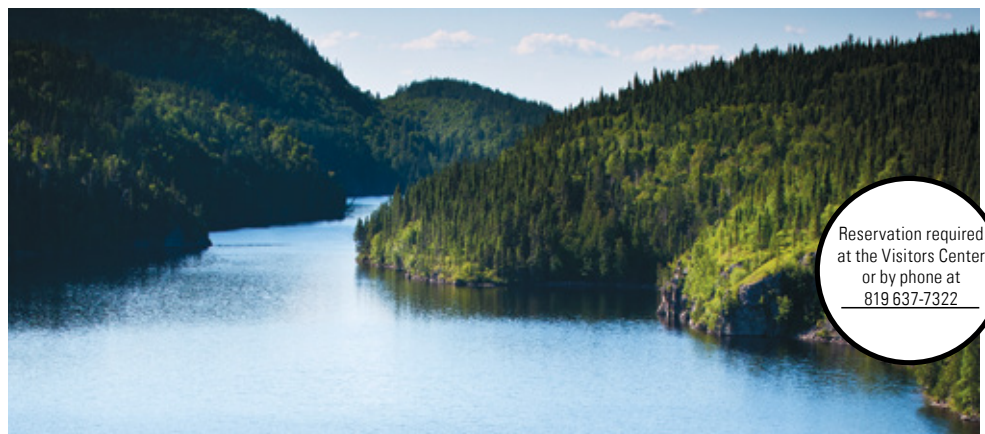
\$ Priced activity, reservation required ** Schedule posted at the nearest Visitors Center (Activity begins between 8:30 PM and 9:30 PM)

TELL-TALE OF THE FIRE RANGER



Meet the *Vigiles de l'horizon*, those men who looked to the horizon in search of the slightest smoke betraying a calamity: a wildfire. By the heat of the campfire, relive the days of Towermen. A free event for the whole family.

LE PARTAGE DES EAUX GUIDED CIRCUIT



The most legendary journey of the park; the watershed line. In one day, by strength of arms and wonder, row along the geomorphological history of the park; rift lakes, cliffs, scree and boulders. On the watershed line, give time to your imagination to absorb the phenomenon of waters that separate and flow, firstly, to the James Bay and the other to the St. Lawrence River. Naturalist park wardens join you on this mesmerizing adventure. Cost: **25\$** /adult, plus taxes and canoe rental. (Free for children accompanied by an adult)



RESTORATION OF THE BROOK TROUT HABITAT

For the past two years, the Aigubelle national park's conservation team has been working to restore the habitat of the brook trout. The degradation of culverts, bank erosion and the creation of impassable falls are the main impacts of human presence in the territory.

To remake quality habitats, culverts have been changed, others added and the banks have been stabilized. In addition, many volunteers and staff have contributed to cleaning debris, the redevelopment of certain spawning areas and the restoration of the passageway of the fish through the clearance of openings and adjusting the flow in streams.

These actions allow fish to move over a larger area and increases the number of potential spawning grounds. Protecting the habitat contributes to the success of the species by promoting reproduction and ensuring its presence in our waterways.

Improving the habitat and the greater potential of spawning sites maintains the exceptional nature of these locations at Aigubelle National Park. The offer of fishing can attract a lot of visitors each year for a species that is found very little in the region.

If you want to know more about the initiatives and conservation issues in the national parks of Quebec, go to parcsquebec.com/blogue

For information on ways to participate in the conservation of our national parks, visit fondsparcsquebec.com

ACCOMMODATIONS



CAMPING



LODGE



READY-TO-CAMP



RUSTIC CAMP

CAMPING

- No services Starting at 28,00\$/night*
- 2 services Starting at 37,75\$/night*
- Primitive (wood included) Starting at 29,50\$/night*

READY-TO-CAMP

- Comfortable and affordable
- Bring your food and your sleeping bag only!
- Room for 6 persons, max of 4 adults

Starting at
101\$
/night

LODGE

- La Puce d'eau (Matissard lake, 2-3 persons) Starting at 124\$/night*
- Le Vice-roi (Matissard lake, 6-7 persons) Starting at 196\$/night*
- Le Monarque (Kinojévis river, 4-5 persons) Starting at 161\$/night*
- La Demoiselle (Lois lake, 4-5 persons) Starting at 161\$/night*

RUSTIC CAMP

- Authentic and romantic
- Wood stove, no water, no electricity
- The perfect stay in Aiguebelle's nature

Starting at
60\$
/night*

*Taxes and park entrance fees not included. Prices are subject to change without notice.

FAMILY FUN IS HERE!

Perfect for sharing special moments in nature, the Sépaq network has many must-see destinations you can explore as a family. **Look out for this logo which identifies the ideal family experiences.**



Here are a few extras we have in place for you:

- Free access to national parks and discovery activities for youngsters 17 years old and under
- Free equipment loan: high chairs, playpens, booster seats, strollers, baby carriers and bikes
- Accommodation options for all budgets

There's no lack of family-friendly activities. Here are some examples available at Parc national d'Aiguebelle :

- Le Grand Jeu Parcs Québec * New in 2016* (offered in French only)
- Noisette : A nutcase story (Puppet show)
- Free water rides for children (accompanied by an adult)
- Park Path 'La Castorière' accessible for strollers

sepaq.com/family

Photo : Stève Deschênes



RÉSEAU **Sépaq**

PLAY ^{IT} SAFE



In the wild, your **safety** is your **responsibility**

Sépaq's mission is to ensure the widest possible access to Québec's most beautiful natural treasures. Sépaq is committed to the safety of its visitors and urges you to play it safe!

Preparing yourself adequately is the first step in the safe and enjoyable practice of your favourite activities. **YOU ARE RESPONSIBLE FOR YOUR OWN SAFETY** and risk management is an integral part of your experience.

Before leaving for an excursion, **MAKE SURE YOU HAVE THE SKILLS AND ABILITIES REQUIRED** to practice your chosen activity **AND RESPECT YOUR PHYSICAL LIMITS**. Your outing should leave you with nothing but pleasant memories. We invite you to consult our safety guides for Sépaq activities on our website at sepaq.com/security.

CHECKLIST FOR A BETTER OUTDOOR EXPERIENCE

BEFORE YOU LEAVE HOME

- Plan on going with at least one other person.
- Check the weather report.
- Pack water and food, even if the activity is only for a few hours.
- See that you have appropriate clothing and footwear for anticipated weather conditions.
- Let somebody know the exact location of your destination and the time you plan to return home.

ONCE YOU ARE ON SITE

- Do not rely on your cellphone.
- Check how much time it will take to complete your activity.
- Obey signs and notices, including bans on open fires.

WHEN YOU GET BACK

- Once you have completed your activity, make sure that you report to our staff anything wrong or any damage or problems you encountered.



REMINDERS



During your visit to a national park, you must always carry your entry fee receipt or your annual entry card.



To preserve our natural riches, you are not allowed to remove any natural elements (animals, plants, dead wood, rocks, etc.). Please also keep to established hiking trails to avoid trampling flora.



Animals find all they need to eat in nature. Feeding wildlife can be very damaging. Keep food or garbage out of reach of animals.



We ask you to carry out all your garbage.



Domestic animals are not accepted in Québec's national parks. However, guide dogs and service dogs are admitted.

PILOT PROJECT AUTHORIZING DOGS

As of May 20, 2016, a pilot project will be in place, authorizing the presence of dogs in **FRONTENAC, JACQUES-CARTIER and OKA national parks**. Please read the applicable rules and authorized places at sepaq.com/animals.

IN CASE OF EMERGENCY: 911

SÛRETÉ DU QUÉBEC:

310-4141 (general number) / *4141 (for cellphones)

*Where cellphone networks are available.

Parc national d'Aigüebelle

12373, Route d'Aigüebelle
Rouyn-Noranda (Québec) J0Z 2Y0
Telephone : 819 637-7322
Fax: 819 637-7106
Email: parc.aigüebelle@sepaq.com
parcsquebec.com/aigüebelle

Legal Deposit: 2016

Bibliothèque et Archives nationales du Québec

Photos: Mathieu Dupuis, Hugo Lacroix, Nicolas Boulé, Steve Deschênes, Audrey Vivier, Francis Gignac, Louise Cadieux, Valérie Patenaude, Daniel Savard, Steve Gignac, Jacques Tremblant, Brendan Lally



