

NA
747
M6A53
1978
V.20S
CAR

ANALYSE DU MACRO-INVENTAIRE MONTRÉALAIS

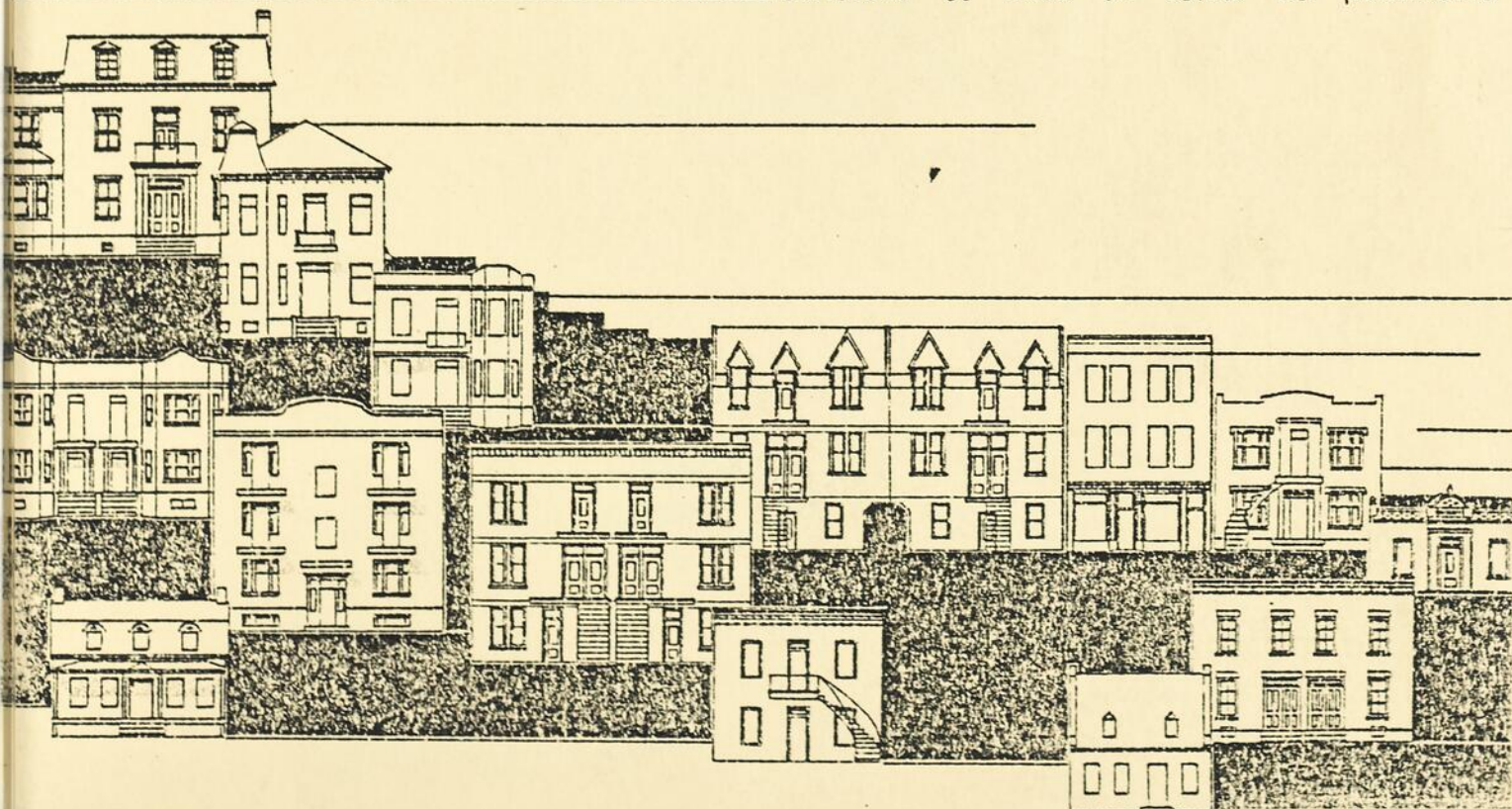
QUARTIER MONT-ROYAL
(Côte-des-Neiges)

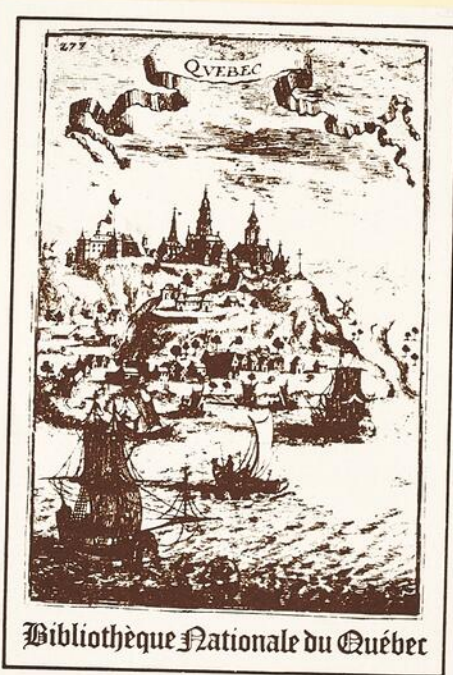
20s

4230-50-41	SUJET	MONTREAL - MONT-ROYAL, QUARTIER - INV. A RCHIT. (20) - SUPPL. *
Code		
Unité: DIRECTION REGIONALE MONTREAL - DEPOT DE DOCUMENTS		SECTEUR: RM

ETHNOTECH
5478 1ère avenue, charlesbourg, G1H-6T7
INC.

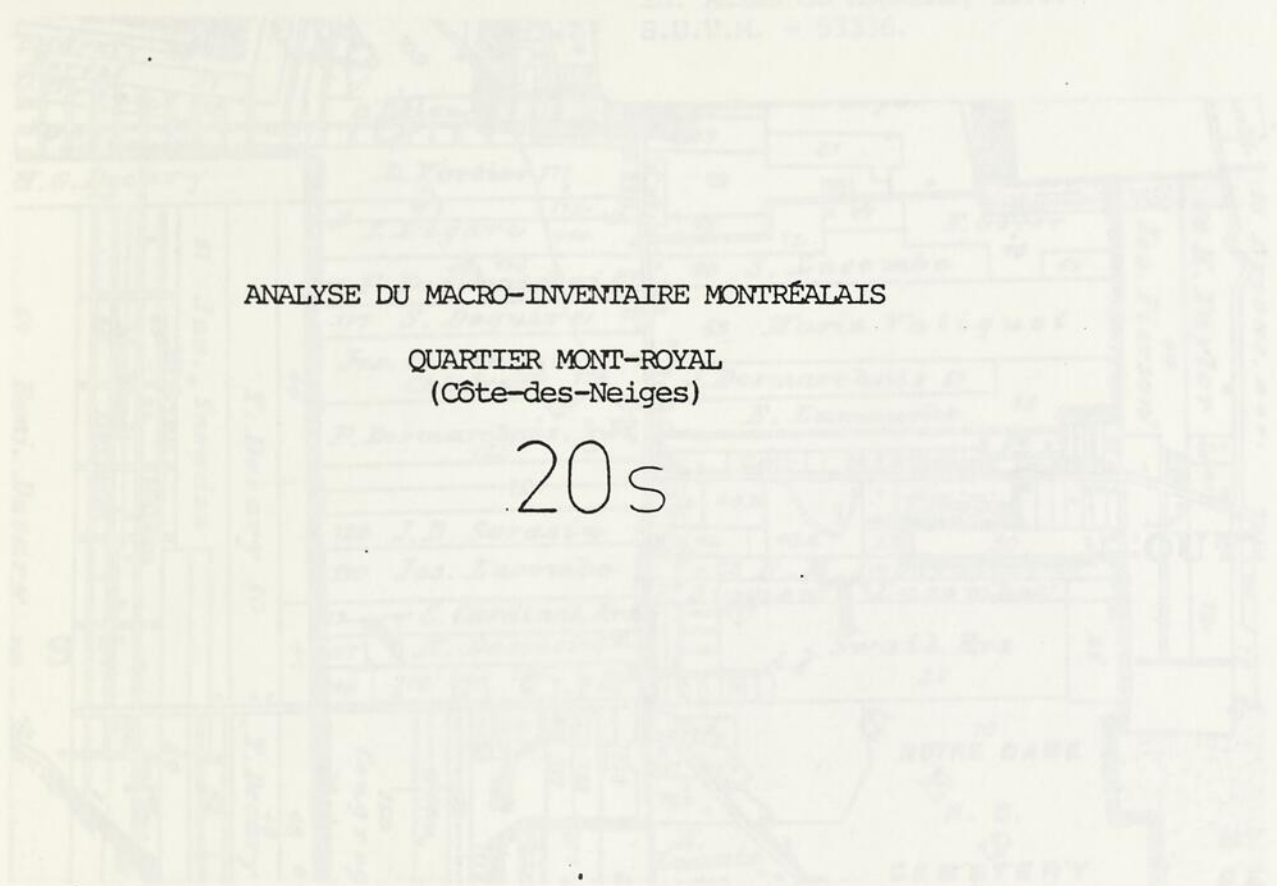
recherche et mise en valeur du patrimoine





Bibliothèque Nationale du Québec

Côte-des-Neiges (schéma),
In: Atlas de Montréal, 1979,
S.O.M.M. - 91316.



ANALYSE DU MACRO-INVENTAIRE MONTRÉALAIS

QUARTIER MONT-ROYAL
(Côte-des-Neiges)

20s

VILLE DE MONTRÉAL

ET

MINISTÈRE DES AFFAIRES CULTURELLES



MONTRÉAL
OCTOBRE 1983

Atlas de Côte-des-Neiges,
In: Atlas des Collines, VI-14,
S.O.M.M. - 52064.

Droits

MINISTRE DES TRANSPORTS

Centre de Montréal
(514) 987-1111

205



MINISTRE DES TRANSPORTS

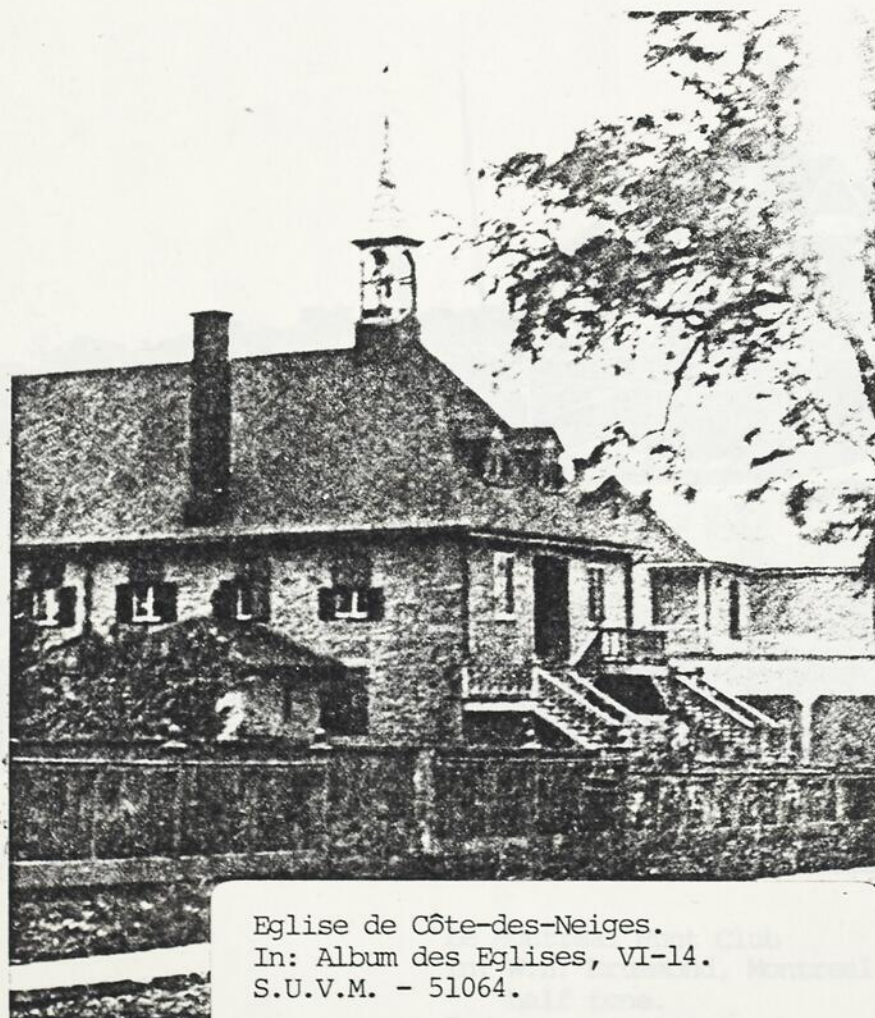
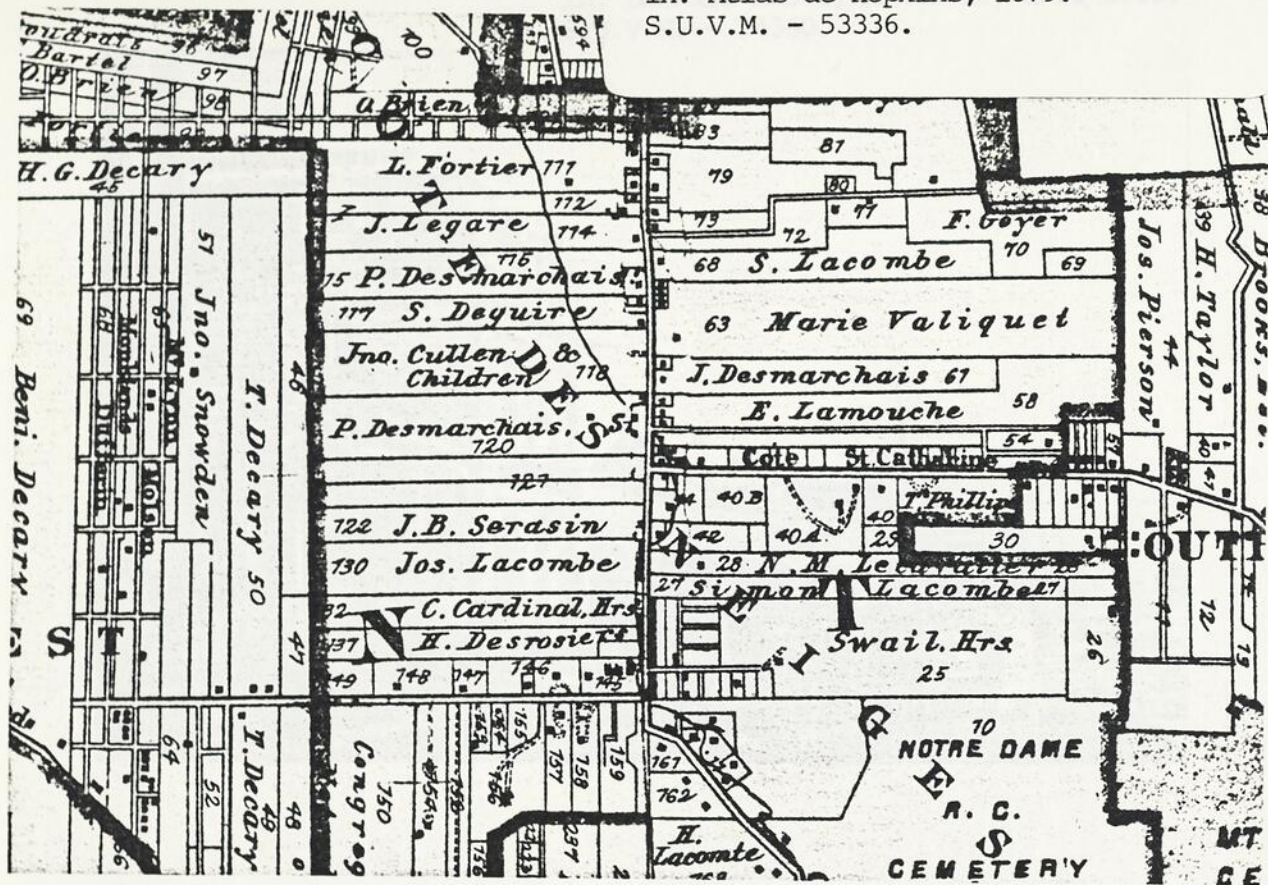


NA
747
M6A53
1978
V. 20S
CAR

MONTREAL
OCTOBRE 1983

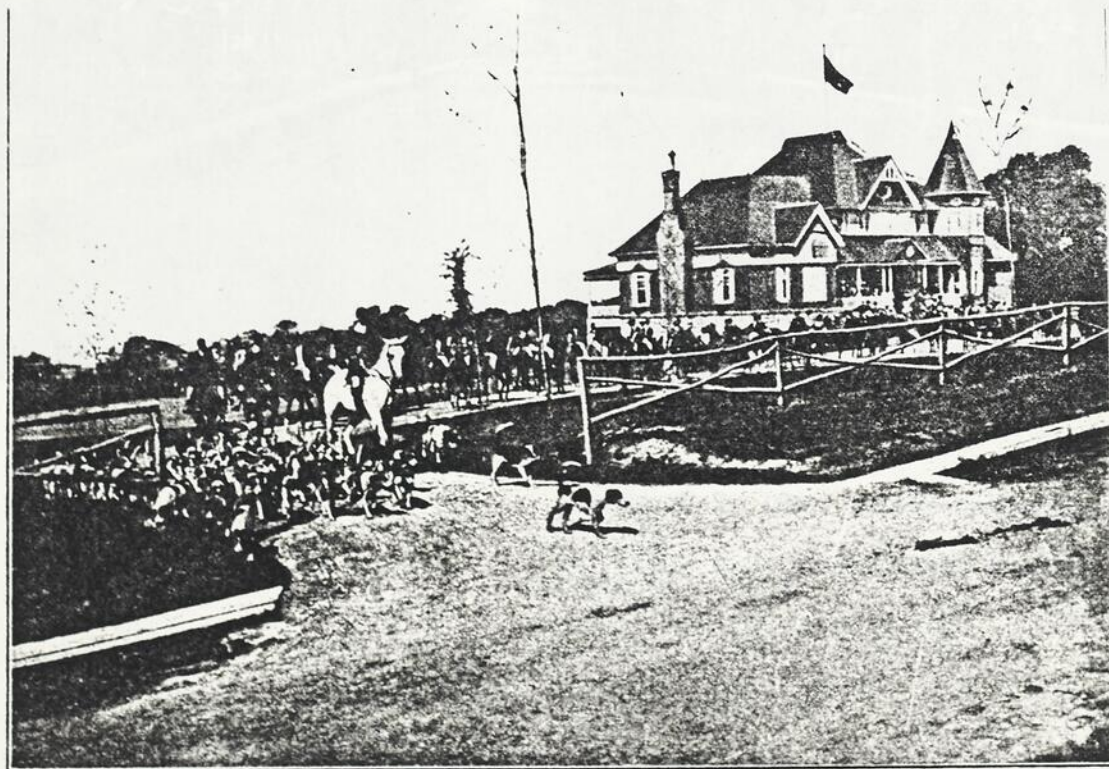
D9031466

Côte-des-Neiges (extrait).
 In: Atlas de Hopkins, 1879.
 S.U.V.M. - 53336.



Eglise de Côte-des-Neiges.
 In: Album des Eglises, VI-14.
 S.U.V.M. - 51064.

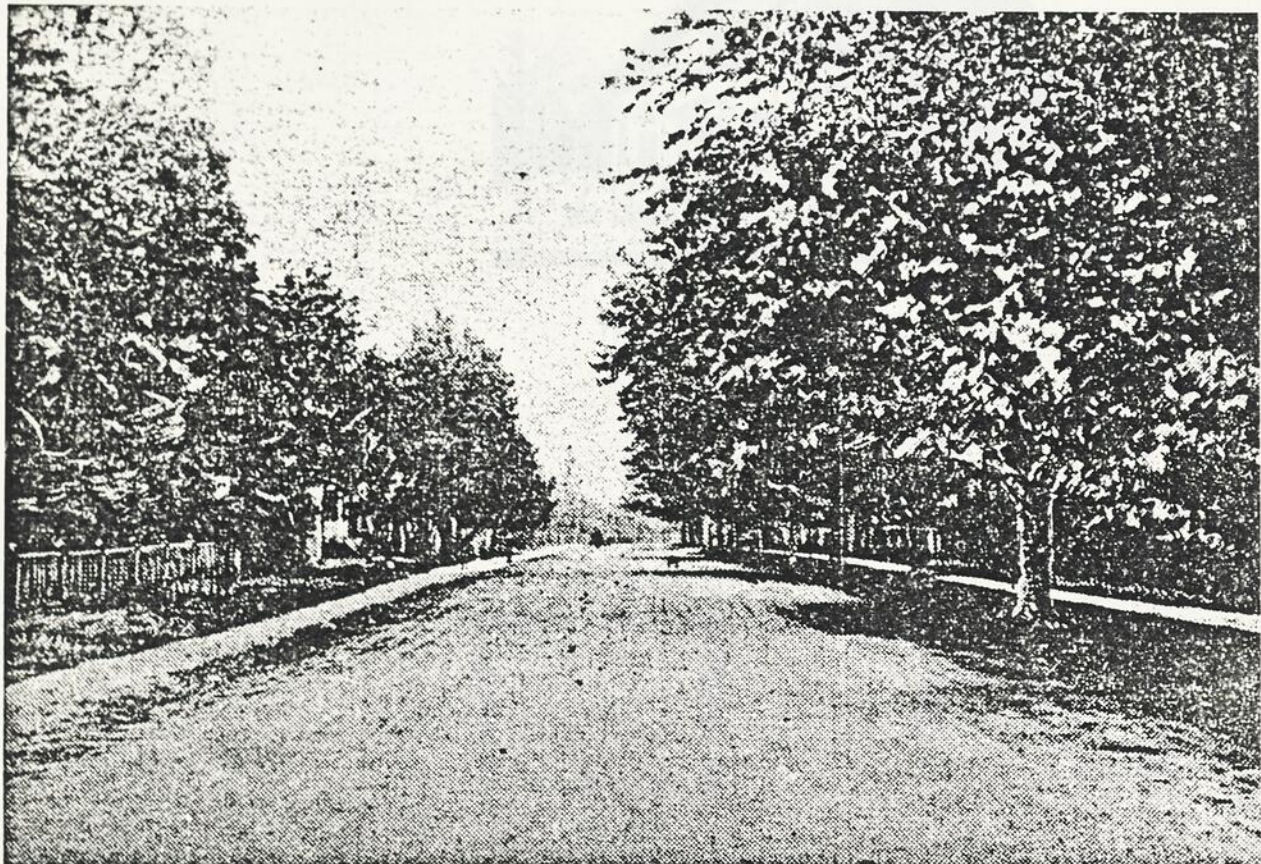
L'hôtel Lumkin, 1905.
In: Leonard Knott, Montréal, 1900-1930.
S.U.V.M. - 54360.



The Montreal Hunt Club

Has its Club House and Kennels on the Cote St. Catherine road, Cote des Neiges village. The club has a membership of 150, which is limited. The hunting season begins on the 15th of August and lasts until the end of November. There are about 40 couples of hounds, and they hunt all over the island, as well as Isle Bizard.

Le Montreal Hunt Club
In: W.H. Drummond, Montreal in
half tone.
S.U.V.M. - 54361.



Chemin de la Côte Sainte-Catherine
en 1912.
In: Coll. E.Z. Massicotte, 4-108-E.
S.U.V.M. - 53305.

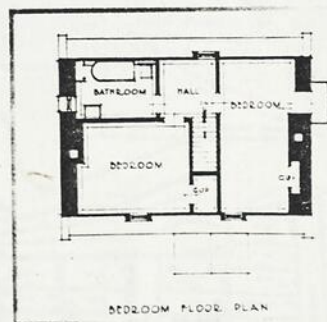


THIS PIONEER STILL SERVES

ON CÔTE DES NEIGES ROAD, Montreal, stands this interesting example of Early Canadian architecture, once a farmhouse and now the city home of Mr. Grattan D. Thompson, architect. The house was built in 1741, and is today one of the few old farmhouses still standing within the city limits. There is still visible a line on the gable end showing where the stable was joined to the house. About twenty-five years ago the house was joined into a modern residence with hot water heating, plumbing, and hardwood floors.

The walls are stone, varying two feet to two feet six inches

The floors are supported on large yellow pine beams, spanning the width of the house. The ceilings are wood with panel strips covering the joints. All the millwork is delicately detailed and appears to have been done at the same mill that produced the woodwork for the famous old schoolhouse at Oka, dated 1741. Some of the original hand-wrought hardware still remains on the windows. The roof is carried on large wood trusses which run the same way as the floor beams, and the members of which are hand-worked into each other and held together by wooden pins. Photograph by Associated Screen News.



Maison sur Côte-des-Neiges
In: Canadian Homes and Gardens,
mars 1932,
S.U.V.M. - Z 309.

Mountain Lots

PANORAMIC VIEW of the mighty St. Lawrence from the turbulent waters of the Lachine Rapids to the Ship Channel a Boucherville; fine view also of the Blue Mountains of St. Hilaire, and the Green Mountains of Vermont.

Each lot has distinctive importance, and owing to the location of this property, completely surrounded by Mount Royal Park, and forming part thereof.

Present purchasers are assured of an increase in values of over 100 per cent. within a comparatively short time. 600 feet above the water level. Excellent tramway service.

Mountain Lots

The only remaining beautiful homestead in the Mountain of Montreal, belonging to the

ESTATE BRUNET

has been divided into building lots, and is now offered for sale.

VIEWMOUNT

surrounded by the Park of the Mountain, and facing Cote des Neiges Boulevard (70.0' wide), and opposite the branch terminus of the Montreal Street Railway Company's tramway service, on the line of the Westmount Boulevard, will be the ideal residential site. Area 846,745 feet.

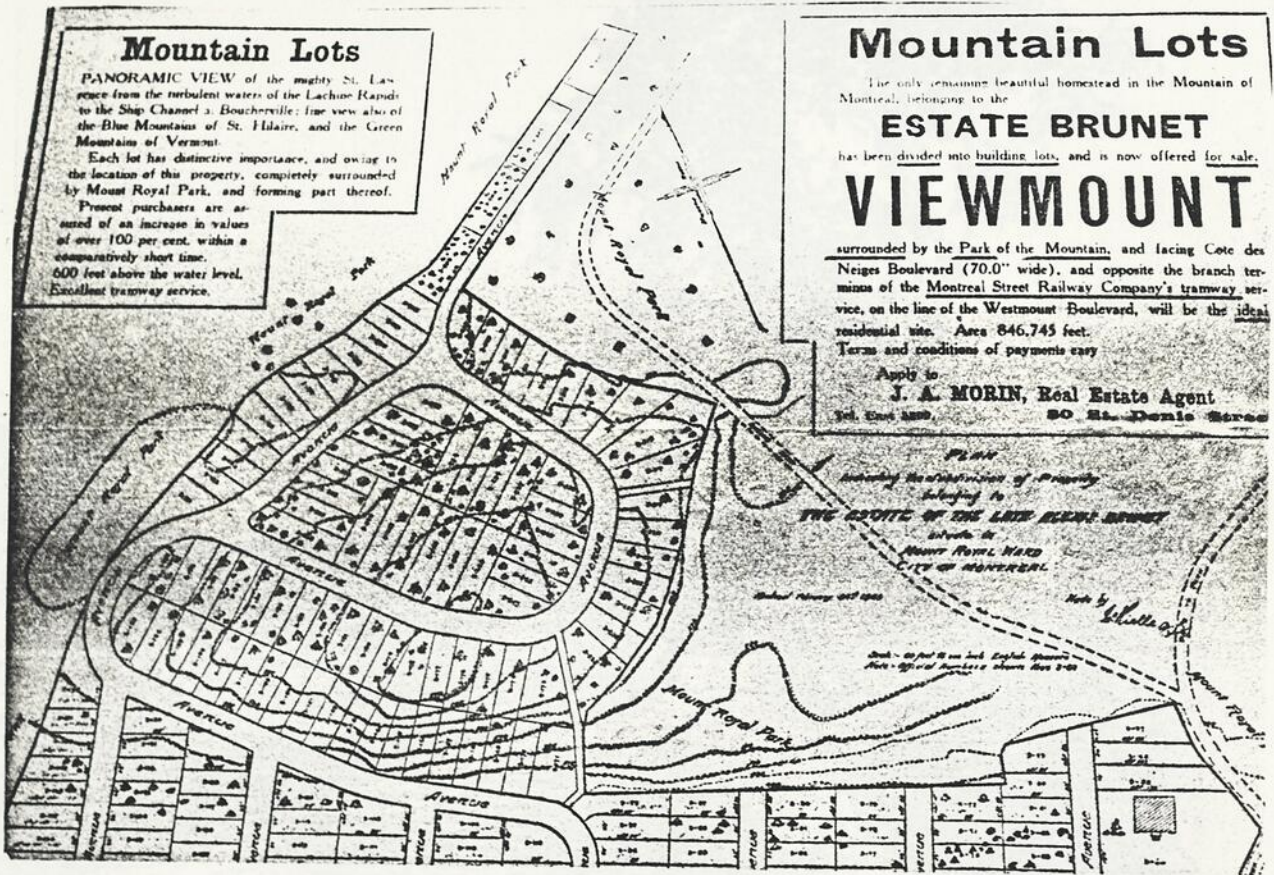
Terms and conditions of payments easy

Apply to

J. A. MORIN, Real Estate Agent

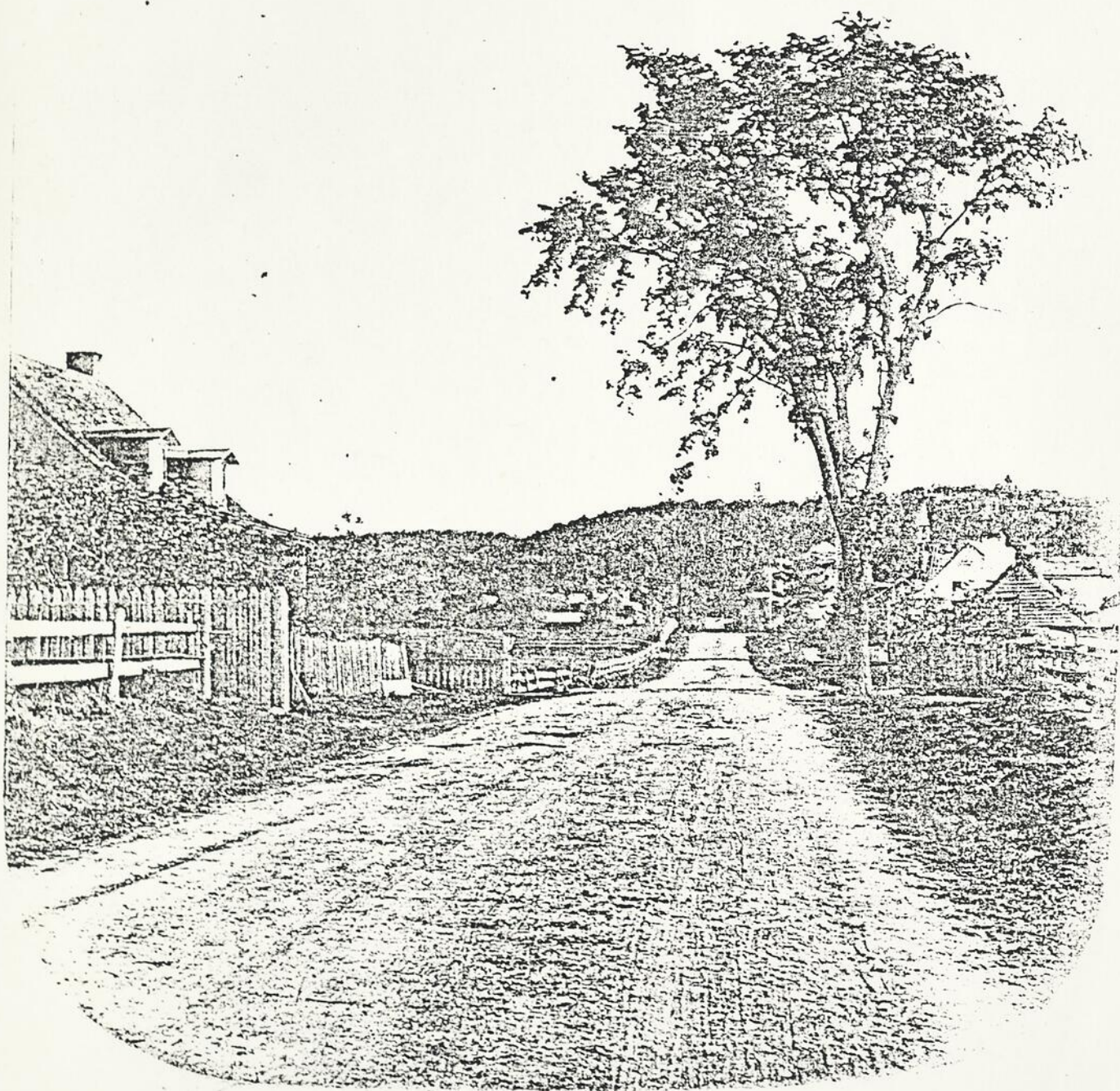
301, Rue St. Denis

50 St. Denis Street



Annonce d'un lotissement en 1909.
In: Coll. E.Z. Massicotte, 6-42-A.
S.U.V.M. - 53326.

Montreal Street Railway, 1899.
Coll. Massicotte, 1904-1905.



Montreal Street Scenes, 1859.
Coll. Notman, 7094 View.







BNQ



000 285 724