



SAVIE LGBTQ

RECHERCHE PARTENARIALE

LITERATURE REVIEW REPORT
on the indicators of inclusion and exclusion
of LGBTQ+ people

Des **SAVOIRS**
sur l'**INCLUSION** et l'**EXCLUSION**
des personnes **LGBTQ**

UNDERSTANDING
INCLUSION and **EXCLUSION** of LGBTQ People (UNIE-LGBTQ)

savie-lgbtq.uqam.ca



TEAM

SCIENTIFIC DIRECTION

Martin Blais, Ph. D.

Mathieu Philibert, Ph. D.

Line Chamberland, Ph. D.

Participated in different steps in producing this report:

Félix-Antoine Bergeron, B. A.

Kristina Taran, B. A.

Michele Baiocco, B. Sc.

To cite this document

Blais, M., Philibert, M., Chamberland, L. and the [UNIE-LGBTQ Research Team](#) (2018). *Literature Review Report on the indicators of inclusion and exclusion of LGBTQ+ people*. Understanding Inclusion and Exclusion of LGBTQ People Research Partnership (UNIE-LGBTQ), Université du Québec à Montréal.

This research project is financed by the Social Sciences and Humanities Research Council of Canada (SSHRC).



Social Sciences and Humanities
Research Council of Canada

Conseil de recherches en
sciences humaines du Canada

Canada

TABLE OF CONTENTS

CONTEXT	4
THE REPORT	5
DATA SOURCES	6
DATA EXTRACTION AND SYNTHESIS	7
AREAS OF LIFE REVIEWED	9
Relationships with Family of Origin	9
Education	11
Work	13
Access to Housing	15
Health and Social Services	18
Neighbourhood	20
Sports	24
Community and Spiritual Life	27
REFERENCES	28
Relationships with Family of Origin	28
Education	29
Work	30
Access to Housing	32
Health and Social Services	33
Neighbourhood	34
Sports	35
Community and Spiritual Life	35

CONTEXT

Despite benefiting from certain formal legal protections, lesbian, gay, bisexual, trans and queer people, as well as gender and sexual minorities (LGBTQ+) living in Quebec are still faced with experiences of exclusion and discrimination, and different sub-groups will face this discrimination in different ways.

In fact, they experience their own unique dynamics of inclusion and exclusion in many spheres of their lives important to their ability to thrive, namely **work**, which refers to carrying out (or not) an employment in an economic sector and within an organizational framework (e.g. private or public enterprises, social economy, community organizations, freelance); the **family**, referring to the family of origin, the family a couple creates with the arrival of children, in addition to so-called "chosen families," which are made up in different ways of members of the family of origin, friends and ex-partners who form an intimate group offering safety, trust and reciprocity of support among each other; and the **social network**, that is, close relationships that produce a feeling of belonging and recognition and offer an exchange of assistance and resources of all kinds. These networks take on a variety of configurations and also include community spaces.

The **UNIE-LGBTQ Research Partnership Project - Survey Component** will make it possible to document the experiences of inclusion and exclusion of LGBTQ+ people living in Quebec. This objective will be achieved through a vast bilingual survey conducted online with respondents from all regions of Quebec. We will document the experiences of inclusion and exclusion or non-recognition faced by LGBTQ+ people in the principle spheres of their lives important to their ability to thrive, that is, the family, work and their main social networks.

In addition to this survey, we are providing a **synthesis of relevant academic data published between 2007 and 2017** on the experiences of inclusion and exclusion, including prejudices, discrimination and victimization which LGBTQ+ people may experience in different areas of their lives.

THE REPORT

This report presents the results of a **literature review of available data on experiences of inclusion and exclusion, including prejudices, discrimination and victimization that may be experienced by LGBTQ+ adults.** This data describes the experiences in the important areas of their lives, that is, their family of origin, housing, health and social services, work, neighbourhood, sports, education and public services, as well as community and spiritual life.

The data has been extracted from research conducted primarily in North America (United States and Canada) and Europe (Germany, Sweden, Spain, United Kingdom, Belgium, and France), but also Oceania (Australia and New Zealand). These countries vary in terms of the legal protections they offer to LGBTQ+ people. These variations in the legal context play a significant role in the forms of inclusion and exclusion experienced by LGBTQ+ people and their scope. Because of this, it is not possible to claim that the data presented here is representative of the situation in Quebec or Canada.

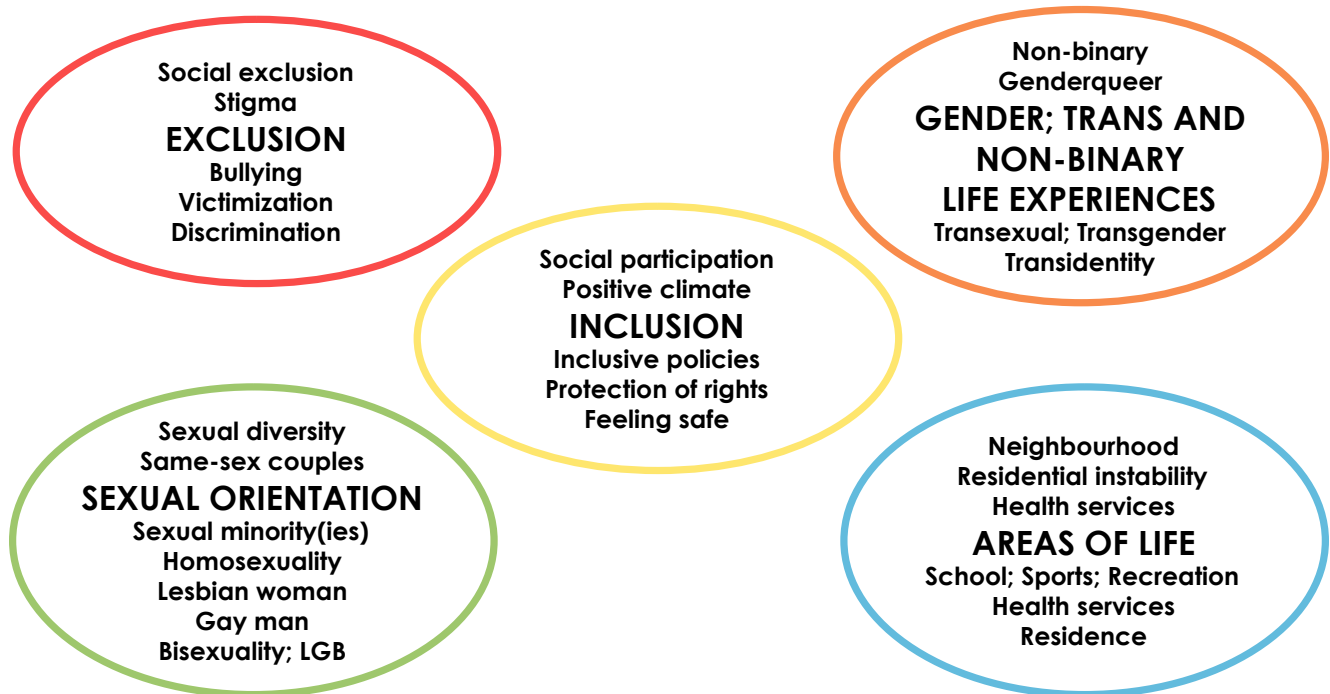
Only the UNIE-LGBTQ survey of LGBTQ+ people in Quebec can enable us to understand the scope and particular forms of inclusion and exclusion that they experience on a daily basis in the areas of their life important to their fulfilment. The survey, while inspired by the indicators presented in this study, is not limited to them. The next steps in planning the survey will in fact make it possible to enrich these indicators and ensure they are relevant to Quebec's context.

DATA SOURCES

The data included in this report comes from a review of academic articles published between 2007 and 2017, and reviewed by peers to guarantee their credibility. The bibliographic search permitted us to identify close to 13 000 articles based on relevant keywords and inclusion criteria. Articles deemed irrelevant have been eliminated, whether after a close reading of the article’s title, abstract or full text.

With this process, we were able to identify a total of 211 articles, 76 of which provided data for the meta-analytic synthesis.

Examples of keywords used to search for relevant articles (all of the keywords were used in English and French)



Inclusion Criteria

- Presenting data collected among LGBTQ+ people over 15 years old
- Presenting the indicators of inclusion and exclusion and their prevalence
- Published in an academic journal (with a peer review committee)
- Published between 2007 and 2017

Summary of the studies included in the meta-analytic synthesis

Areas	Number of studies synthesized	Sample Size (including heterosexual and cisgender participants for comparative purposes, depending on the case)
Family of Origin	13	min = 37, max = 3 458, total = 7 422
Housing	13	min = 66, max = 6 456, total = 26 245
Health and Social Services	20	min = 64, max = 6 456, total = 24 206
Work	22	min = 119, max = 7 884, total = 30 402
Neighbourhood	5	min = 51, max = 730, total = 1 901
Sports	2	min = 76, max = 1 209, total = 1 285
Education	15	min = 7, max = 7 040, total = 21 543

Notes. Min: size of the smallest included sample; Max. : size of the biggest included sample; Total: sum of participants in all included samples

DATA EXTRACTION AND SYNTHESIS

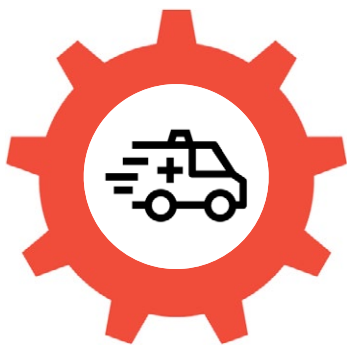
For each of the areas of interest, we have carried out a meta-analytic synthesis of the available studies. We have also sometimes reported portions pulled directly from the studies without any other transformation, such as in the case of community and spiritual life, an area that did not include enough relevant studies to integrate into a meta-analysis. When a number of studies reported data on the same phenomenon, they were aggregated in order to reduce all of the available information to a single number (an aggregated proportion) which enabled us to simplify the presentation. Depending on the area, between 2 and 22 studies have been synthesized, which has made it possible for us to collect responses from 1 285 to 30 402 people. The number of LGBTQ+ participants in the sample of the studies varies from 670 to 22 768.

The majority of the data presented here are averages of the data reported in all of the relevant studies. These averages are considered to be more reliable than studies taken individually. There is a limit, however, to this reliability as different factors limit the comparability of studies used for the same average, such as margins of error, variations in the composition of samples (the characteristics of respondents) or even variations in the means of collecting data (for example, methods of recruiting participants or questionnaires used). Finally, we would like to emphasize that the aggregated averages

do not take into account the fact that the data came from different countries, where forms of inclusion and exclusion vary given the laws and norms that can influence how LGBTQ+ people are treated by institutions and the public.

It's possible to have an idea of the precision of these averages by calculating confidence intervals. Confidence intervals show two values and the true value probably (19 times out of 20) lies between these two values. The smaller the confidence interval's range, the more the average can be considered precise and reliable. On the other hand, the larger the confidence interval's range, the less the average can be considered precise and reliable.

Take the following data, taken from the health and social services synthesis, as an example.



26.1%

[21.5-30.8%]

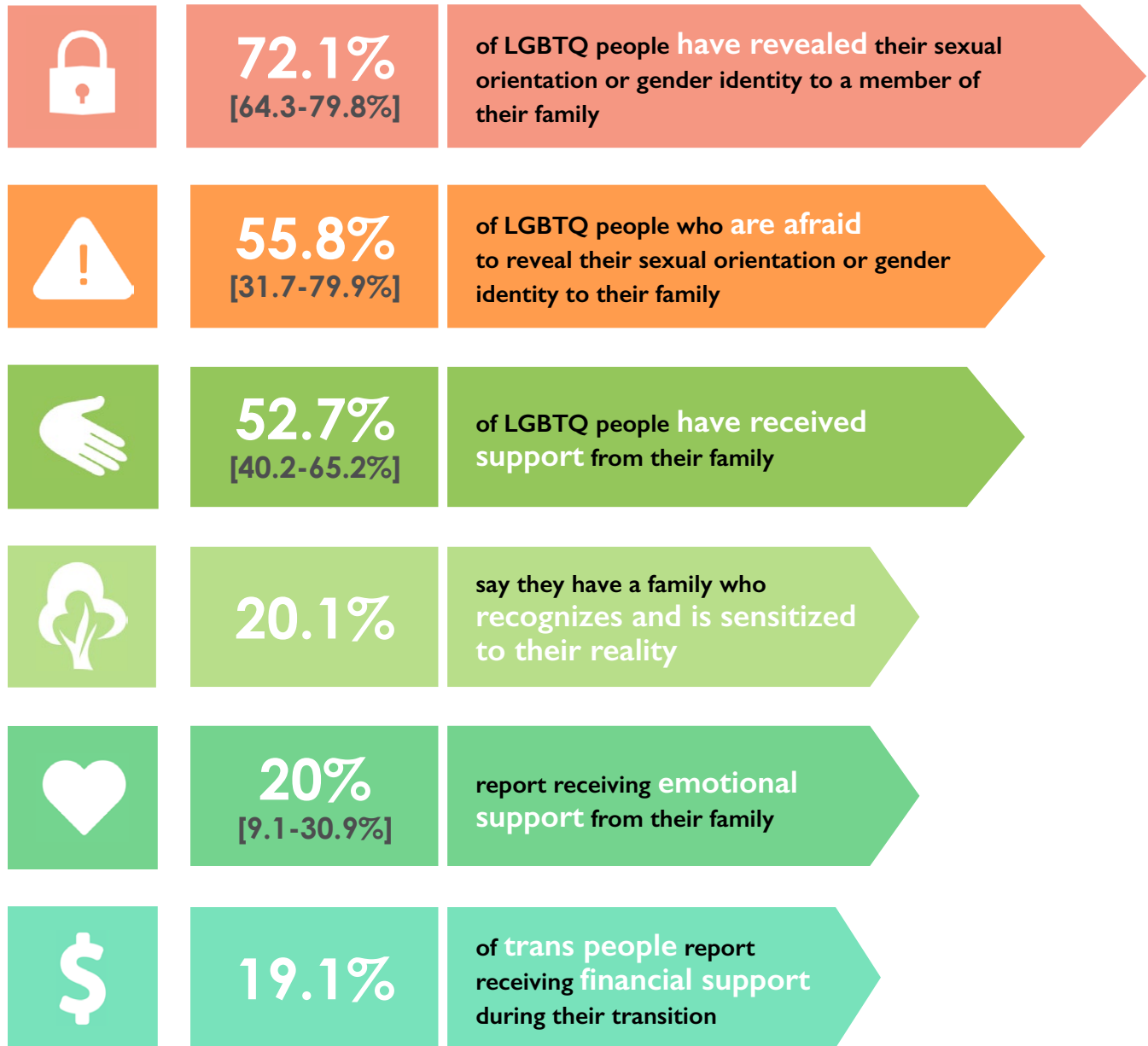
report having
UNMET health needs

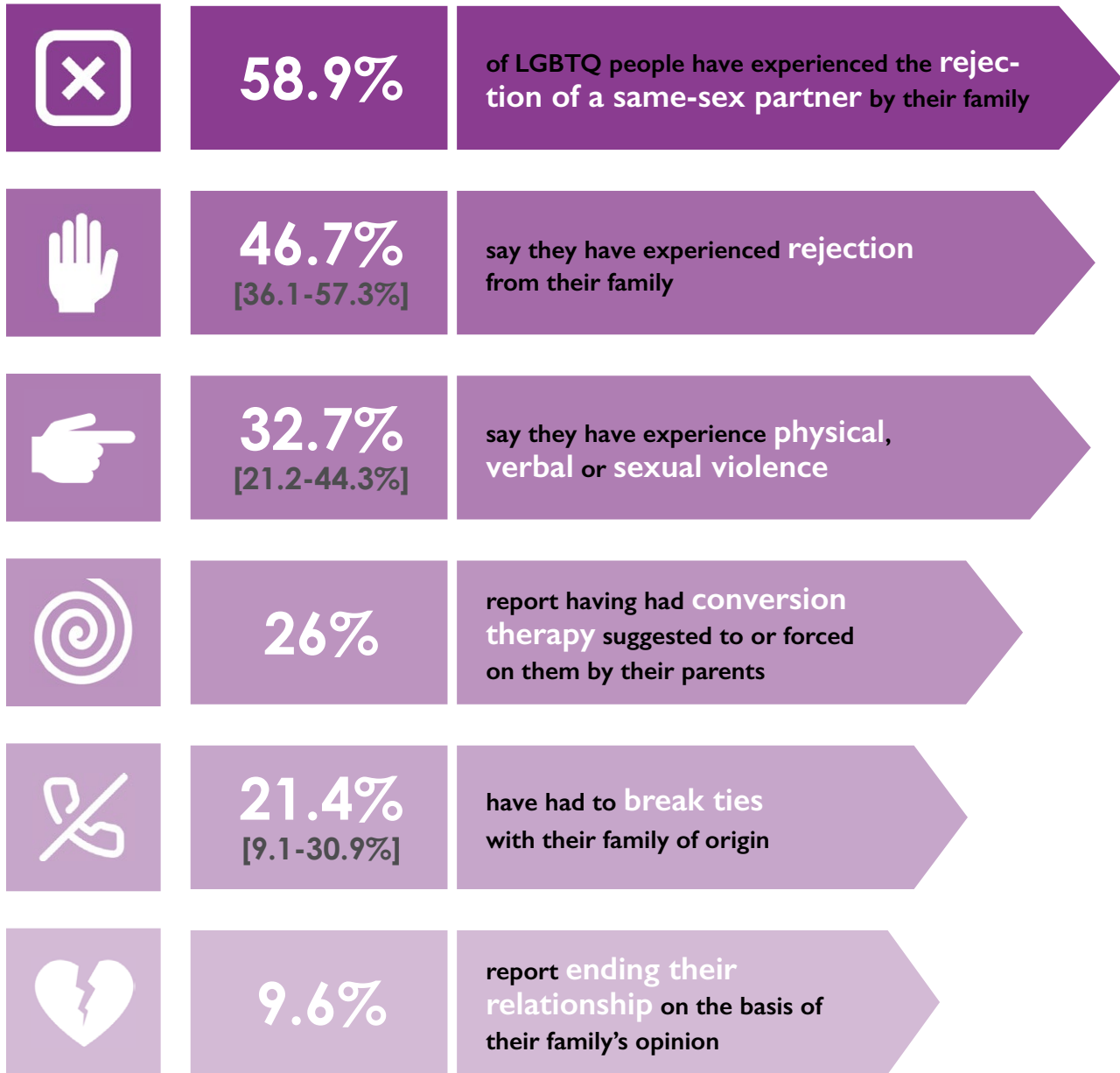
The number **26.1%** means that on average, in all of the studies reviewed on unmet health needs, **26.1%** (that is, a bit more than a quarter) of LGBTQ+ respondents reported having needs left unmet.

The values between square brackets indicate the range of the confidence interval. In this example, without the information enabling us to be more precise, we can assert that it is very probable that the true average lies between **21.5%** and **30.8%**.

AREAS OF LIFE REVIEWED

Relationships with Family of Origin





... because of their LGBTQ+ identity

Education

LGBTQ people report feeling uncomfortable revealing their sexual orientation or gender identity in their educational environment.



32.1%
[21.6-42.6%]

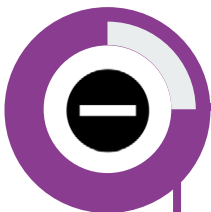
of LGBTQ people are **afraid for their safety**

29.8%
[24.6-35.1%]

of LGBTQ people have experienced **harassment, bullying and discriminatory treatment** at school

26%

of LGBTQ people report **not knowing a trusted adult** at school



25%

of **adult trans people** have been **denied access to the bathroom** matching their gender identify while at university

21%

of **adult trans people** have been **denied access to university residences** appropriate for their gender

Some educational settings
are not open to sexual diversity and the plurality of genders.



44.6% [24.1-65.2%] of LGBTQ people report:

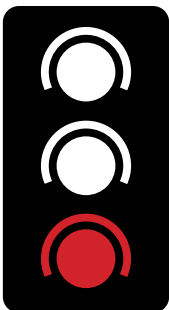
- the presence of **LGBTQ support groups**,
- **inclusive anti-bullying policies**,
- the presence of a **curriculum including** sexual diversity and the plurality of genders.

≈ **1 LGBTQ person in 3** reports **participating**:

- in LGBTQ events,
- support groups,
- trainings on LGBTQ realities.

≈ **1 support group in 2**

is **active** in their school.



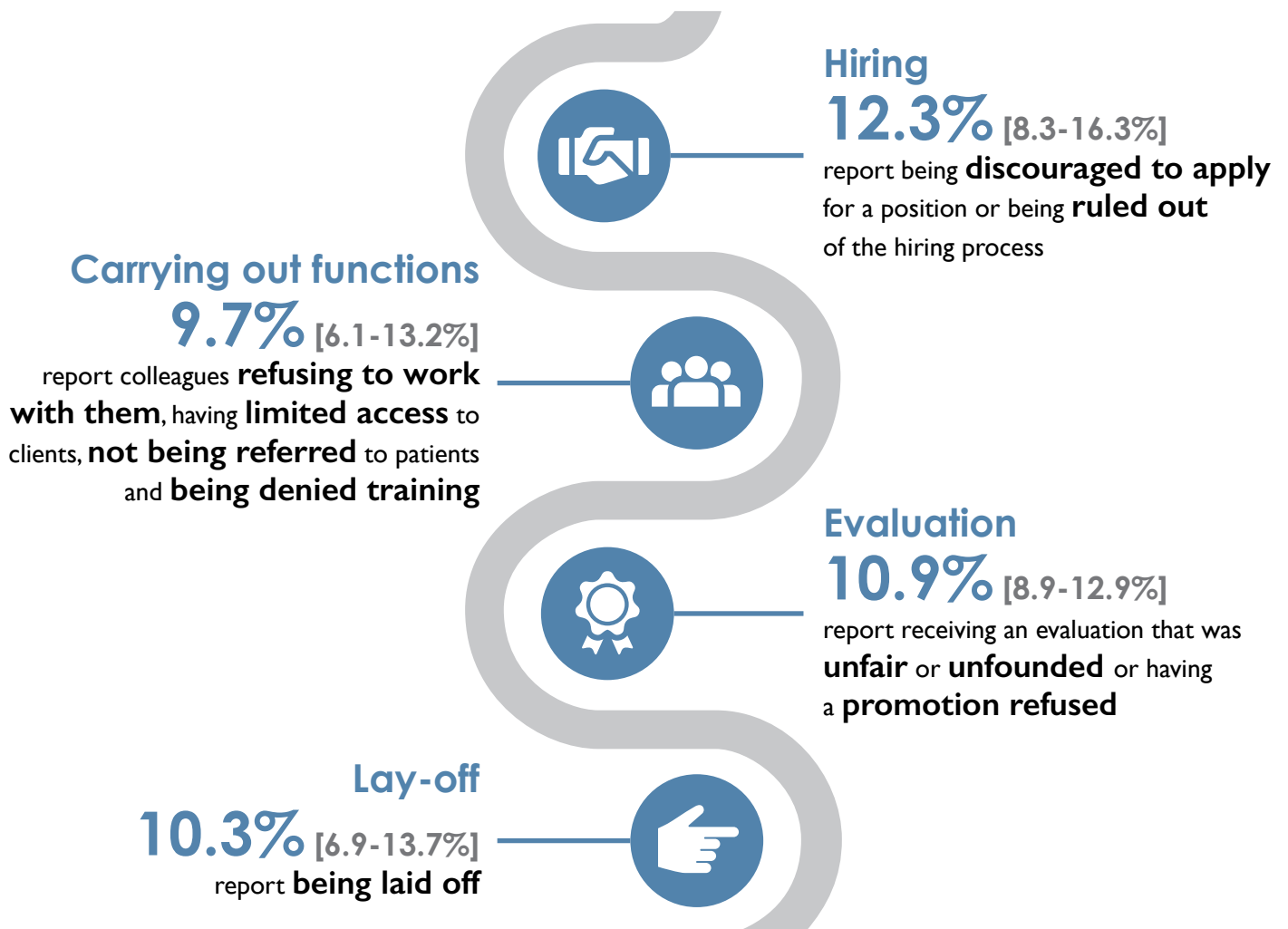
1 person in 3 (30.3%) is **reticent of the idea**
of **LGBTQ support groups** in their educational institution.

39.5% [21.0-58.0%] of LGBTQ people report a
heterosexist, intolerant or even **hostile environment**
to sexual diversity and the plurality of genders.

39.2% [21.7-56.8%] of LGBTQ people **do not feel**
comfortable revealing their sexual orientation or gender
identity in their educational institution.

Work

Access to employment and an impeded career path because of prejudices in regards to sexual orientation, gender identity or trans or non-binary life experiences.



... because of their LGBTQ identity

LGBTQ people are faced with an intimidating work climate.



verbal harassment
(offensive jokes, negative comments)

42.4%
[33.5-51.3%]



inappropriate questions about their
sexuality or personal life

38.9%
[29.4-48.4%]



rumours calling into doubt their
skills and reputation

25.4%
[11.8-39.0%]



suggestions to remain discrete

17%
[12.8-21.2%]



sexual harassment

12%
[6.3-17.8%]

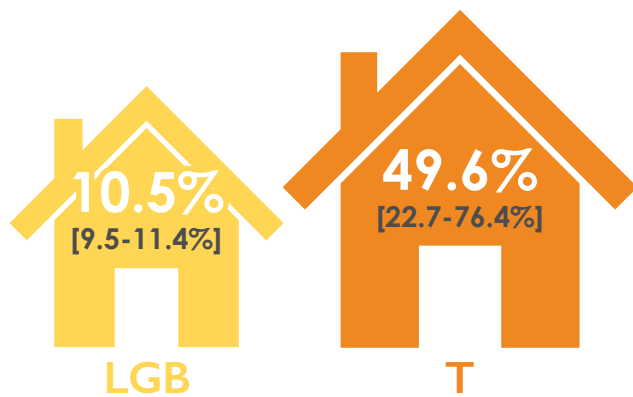


40.1% [30.6-49.6%] of people report having witnessed discrimination towards an LGBTQ person at work.

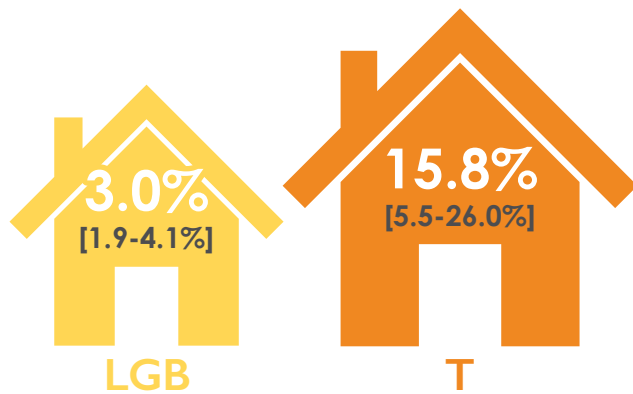
Access to Housing

LGBTQ people experience discrimination in access to housing.

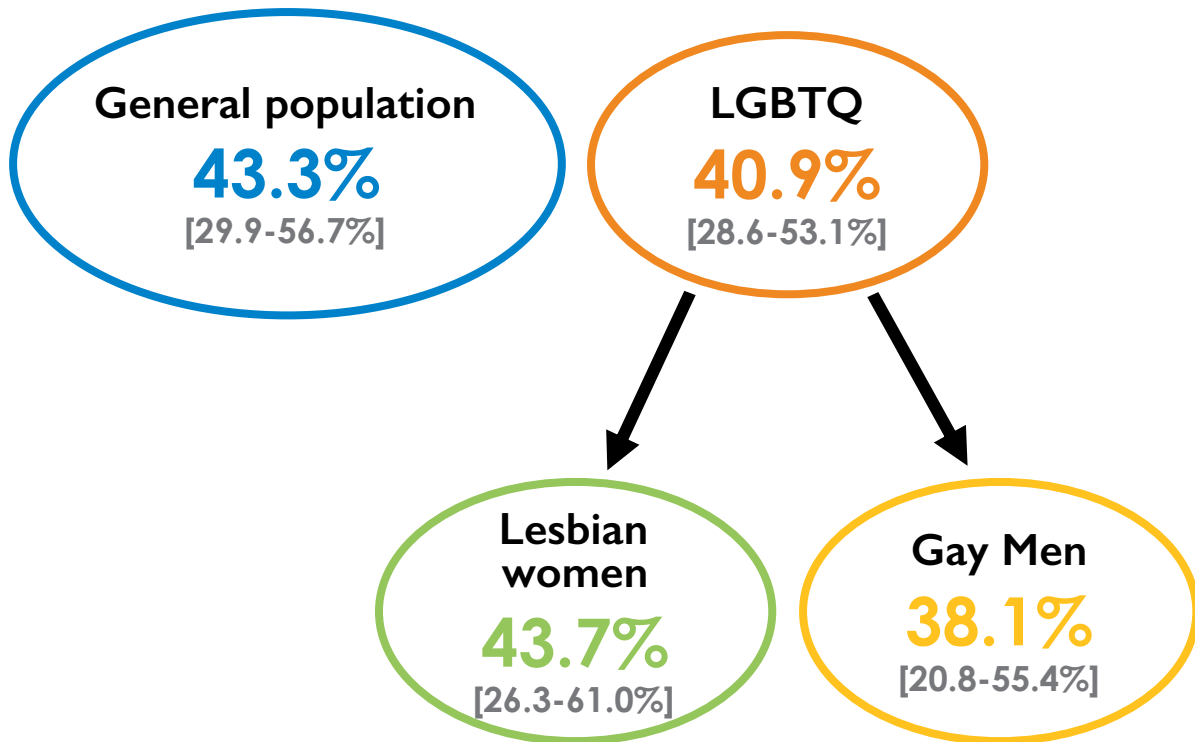
Have experienced **discrimination**
when trying to find housing



Have not been allowed
to move in because they are LGBTQ

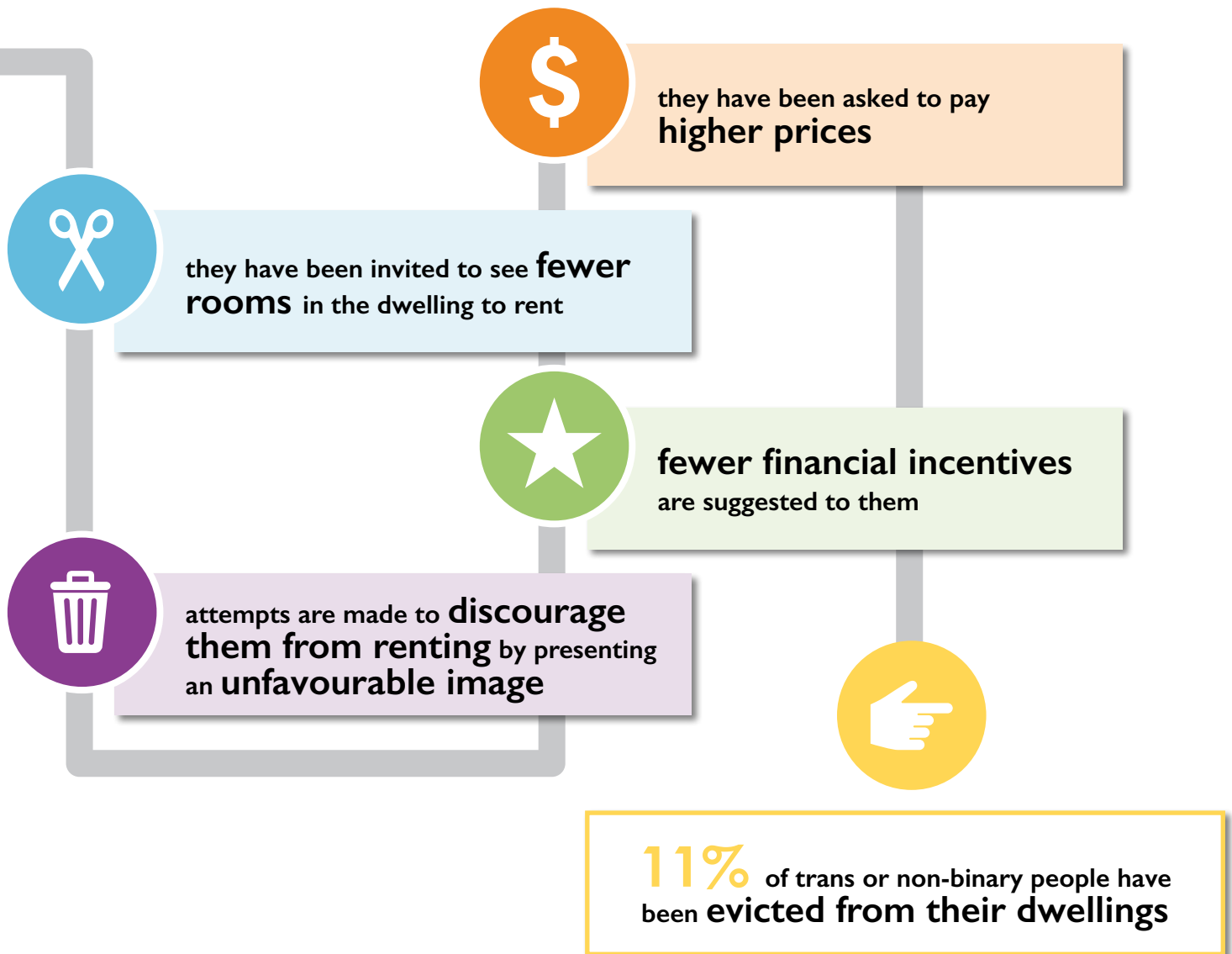


Received **positives responses** and **been invited to visit** the dwelling.

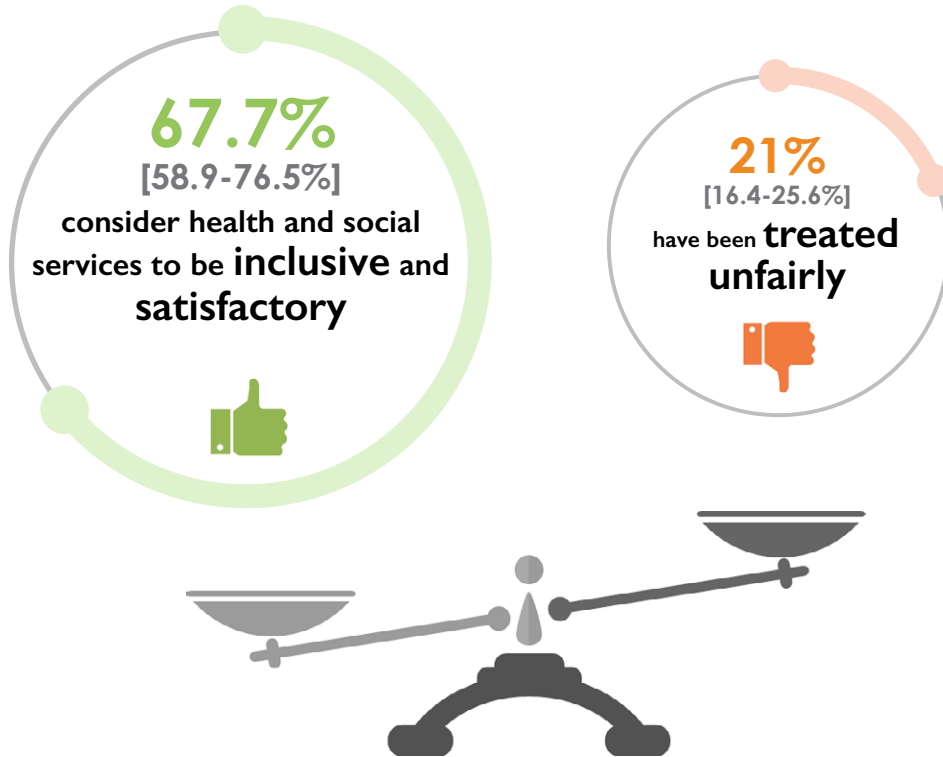


of young gay men between the ages of 18 and 29 in urban areas have experienced **residential instability** in the past month

Trans and non-binary people have faced unfair treatment and strategies to discourage them from accessing a dwelling.

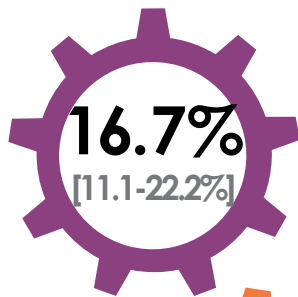


Health and Social Services

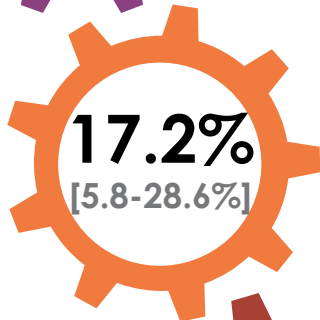


61.5% [58.3-64.7%] have **revealed** their sexual orientation, gender identity or their trans or non-binary life experiences **comfortable discussing** this with health professionals

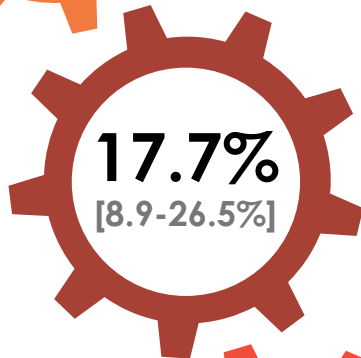
The intolerant climate in health and social services leads some LGBTQ people to neglecting their health needs.



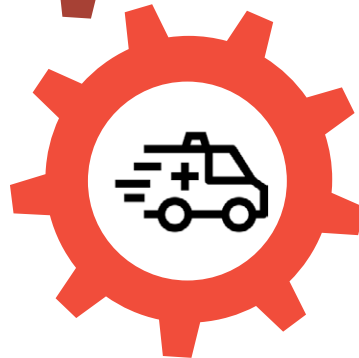
report the **climate** of health services is **not very welcoming and tolerant** to sexual diversity



have been **denied care** by health professionals



have reported **putting off** the use of **health and social services** because of worries about reactions and attitudes of health care professionals

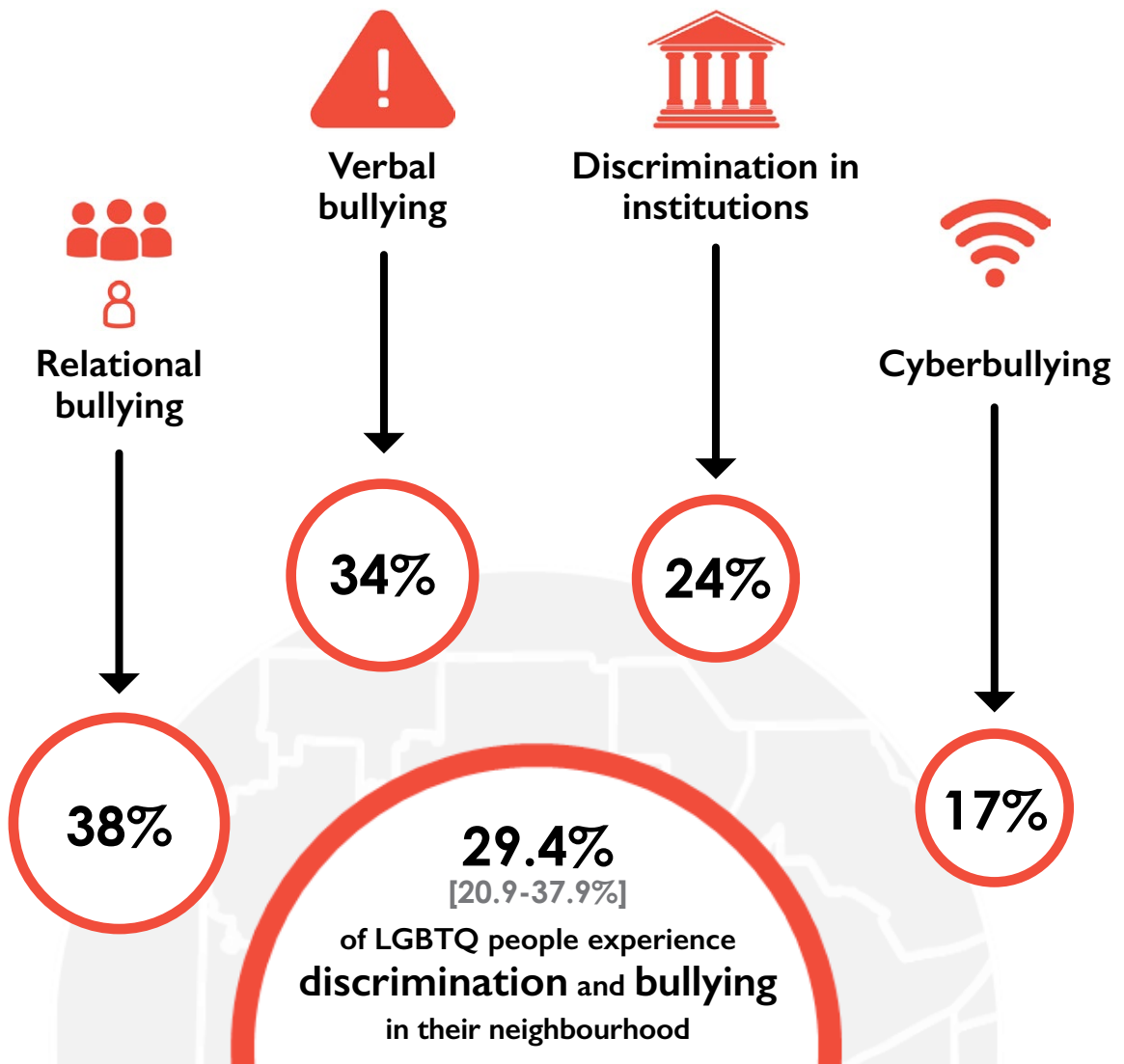


[21.5-30.8%]
report having **health needs not met**

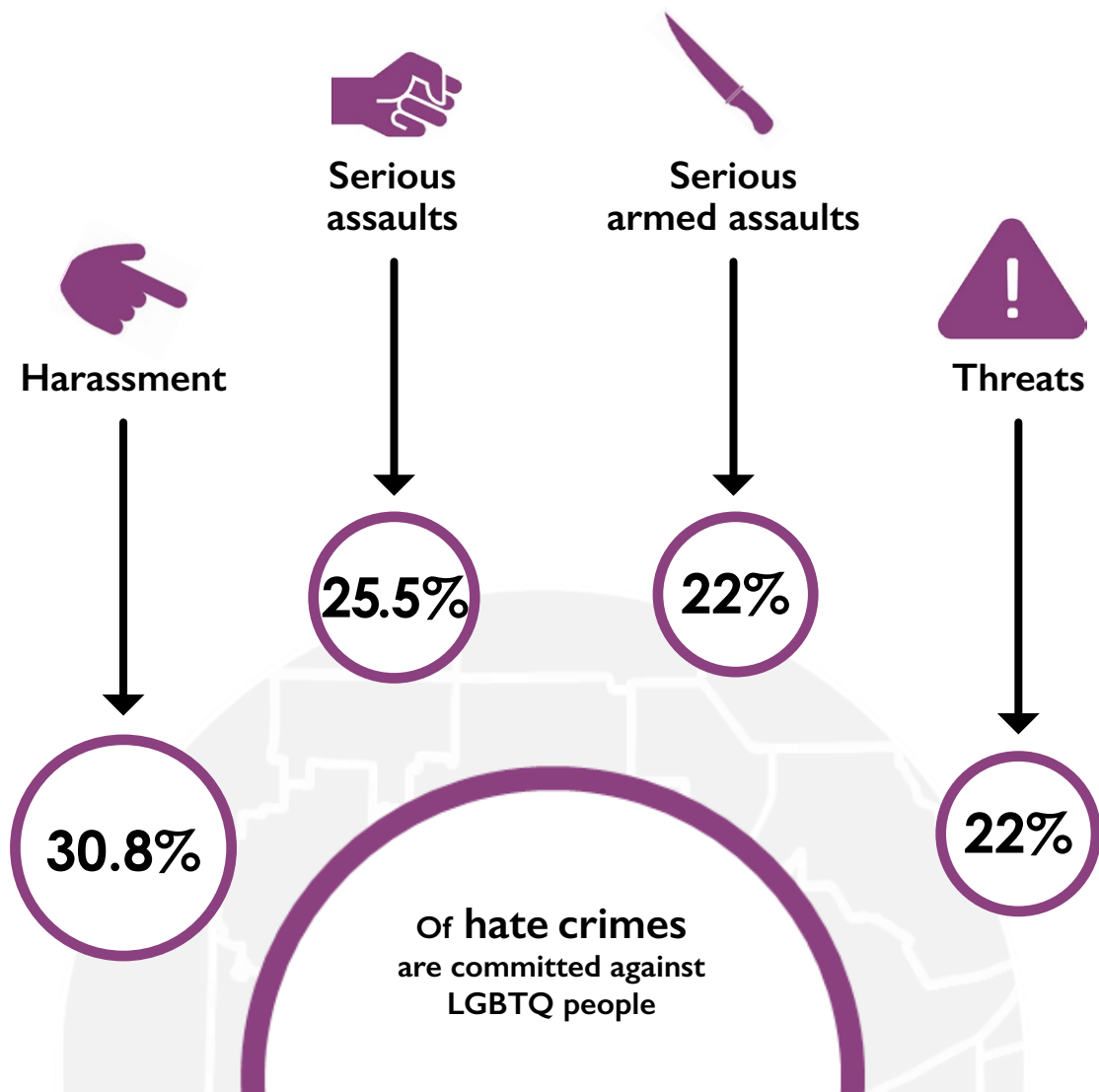
... because of their LGBTQ identity

Neighbourhood

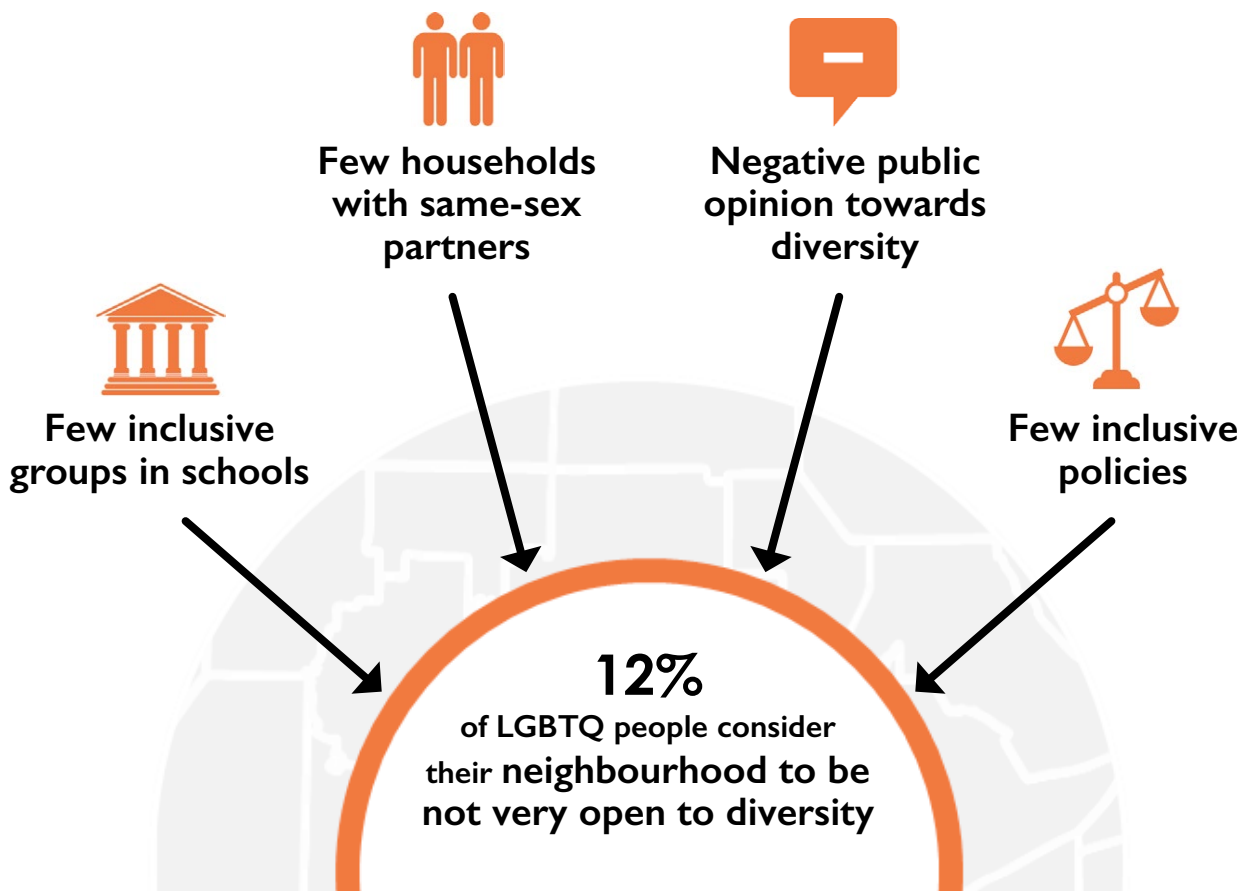
LGBTQ people experience stigmatization, discrimination and harassment where they live.



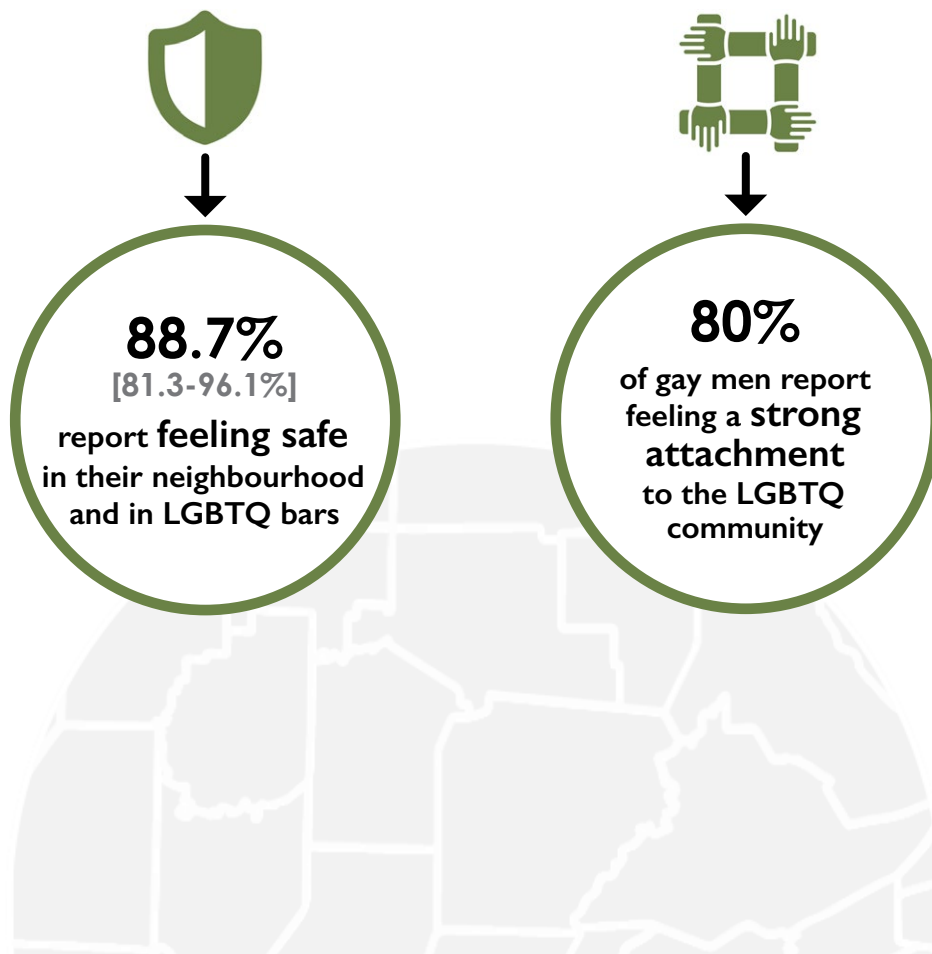
LGBTQ people experience violence where they live.



LGBTQ people consider their neighbourhood to be not very inclusive.



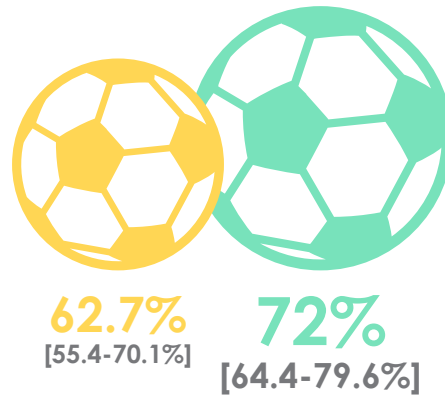
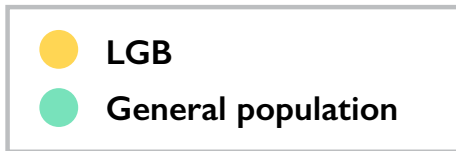
Importance of specific spaces



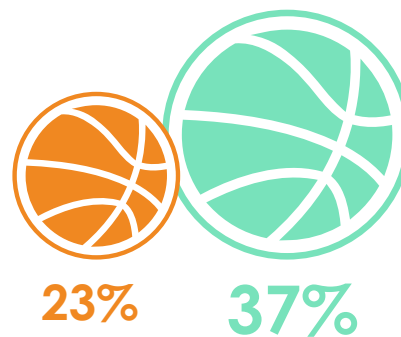
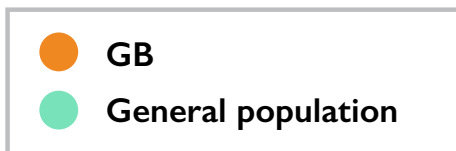
Sports

LGB people report a lower participation in sports than heterosexual people.

Participation in all forms of sports activities



Participation in competitive sports clubs or intense sports activities



LGBTQ people are confronted with
heterosexist environments when playing sports.



79.7% of student athletes report
homophobic comments in their sports team



12% of LGB people report experiencing **homophobia**
or **discrimination** in their team



Gay and bisexual men report **more** discrimination
than **lesbian or bisexual women**





These **non-inclusive environments** make athletes **more reluctant to reveal** their sexual orientation to their sports team

53% of lesbian women have revealed their sexual orientation

48% of gay and bisexual men have revealed theirs



≈ **1 heterosexual athlete in 5 (19.7%)** reports **disagreeing** with guidelines put in place to protect LGBTQ athletes

Community and Spiritual Life

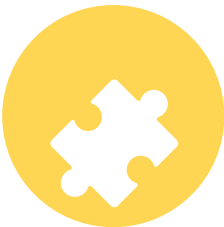
LGBTQ Youth Religious and Community Associations



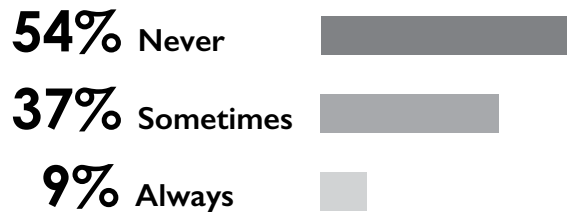
58% of LGBTQ youth do not reveal their **sexual orientation** to their religious community.



60% of LGBTQ youth report **conflicts** after revealing their sexual orientation to their religious community.



Very few LGBTQ youth report **openly defining** themselves as both LGBTQ and religious.



For more information on the Understanding Inclusion and Exclusion of LGBTQ People (UNIE-LGBTQ) Project of the Chaire de recherche sur l'homophobie at the Université du Québec à Montréal (UQAM):

savie-lgbtq.uqam.ca

REFERENCES

Relationships with Family of Origin

- Birnkrant, J. M., & Przeworski, A. (2017). Communication, advocacy, and acceptance among support-seeking parents of transgender youth. *Journal of Gay and Lesbian Mental Health, 21*(2), 132–153.
- Blair, K. L., & Pukall, C. F. (2015). Family matters, but sometimes chosen family matters more: Perceived social network influence in the dating decisions of same- and mixed-sex couples. *Canadian Journal of Human Sexuality, 24*(3), 257–270.
- Bradford, J., Reisner, S. L., Honnold, J. A., & Xavier, J. (2013). Experiences of transgender-related discrimination and implications for health: Results from the Virginia transgender health initiative study. *American Journal of Public Health, 103*(10), 1820–1829.
- D'Augelli, A. R., Grossman, A. H., & Starks, M. T. (2008). Families of gay, lesbian, and bisexual youth: What do parents and siblings know and how do they react? *Journal of GLBT Family Studies, 4*(1), 95–115.
- Domínguez-Fuentes, J. M., Hombrados-Mendieta, M. I., & García-Leiva, P. (2012). Social support and life satisfaction among gay men in Spain. *Journal of Homosexuality, 59*(2), 241–255.
- Doty, N. D., Willoughby, B. L. B., Lindahl, K. M., & Malik, N. M. (2010). Sexuality related social support among lesbian, gay, and bisexual youth. *Journal of Youth & Adolescence, 39*(10), 1134–1147.
- Feinstein, B. A., Wadsworth, L. P., Davila, J., & Goldfried, M. R. (2014). Do parental acceptance and family support moderate associations between dimensions of minority stress and depressive symptoms among lesbians and gay men? *Professional Psychology: Research and Practice, 45*(4), 239–246.
- Klein, A., & Golub, S. A. (2016). Family rejection as a predictor of suicide attempts and substance misuse among transgender and gender non-conforming adults. *LGBT Health, 3*(3), 193–199.
- Martinez, K., & McDonald, C. (2016). By the hands of our brothers: An exploration of sibling-to-sibling aggression for victimized heterosexual and sexual minority women. *Journal of GLBT Family Studies, 12*(3), 242–256.
- McConnell, E. A., Birkett, M. A., & Mustanski, B. (2015). Typologies of social support and associations with mental health outcomes among LGBT youth. *LGBT Health, 2*(1), 55–61.
- Mustanski, B., & Liu, R. T. (2013). A longitudinal study of predictors of suicide attempts among lesbian, gay, bisexual, and transgender youth. *Archives of Sexual Behavior, 42*(3), 437–448.
- Nemoto, T., Bödeker, B., & Iwamoto, M. (2011). Social support, exposure to violence and transphobia, and correlates of depression among male-to-female transgender women with a history of sex work. *American Journal of Public Health, 101*(10), 1980–1988.
- Pyne, J., Bauer, G., & Bradley, K. (2015). Transphobia and other stressors impacting trans parents. *Journal of GLBT Family Studies, 11*(2), 107–126.
- Raymond, G., Blais, M., Bergeron, F.-A., & Hébert, M. (2015). Victimization, mental health and well-being among trans youths in the province of Quebec. *Santé Mentale au Québec, 40*(3), 77–92.
- Riggs, D. W., von Doussa, H., & Power, J. (2015). The family and romantic relationships of trans and gender diverse Australians: An exploratory survey. *Sexual and Relationship Therapy, 30*(2), 243–255.

- Ryan, C., Huebner, D., Diaz, R. M., & Sanchez, J. (2009). Family rejection as a predictor of negative health outcomes in white and latino lesbian, gay, and bisexual young adults. *Pediatrics*, *123*(1), 346–352.
- Ryan, C., Russell, S. T., Huebner, D., Diaz, R., & Sanchez, J. (2010). Family acceptance in adolescence and the health of LGBT young adults. *Journal of Child and Adolescent Psychiatric Nursing*, *23*(4), 205–213.
- Simons, L., Schrage, S. M., Clark, L. F., Belzer, M., & Olson, J. (2013). Parental support and mental health among transgender adolescents. *Journal of Adolescent Health*, *53*(6), 791–793.
- Snapp, S. D., Watson, R. J., Russell, S. T., Diaz, R. M., & Ryan, C. (2015). Social support networks for LGBT young adults: Low cost strategies for positive adjustment. *Family Relations*, *64*(3), 420–430.
- Vanderwaal, C. J., Sedlacek, D., & Lane, L. (2017). The impact of family rejection or acceptance among LGBT+ millennials in the seventh-day adventist church. *Journal of the North American Association of Christians in Social Work*, *44*(1), 72–95.
- Zimmerman, L., Darnell, D. A., Rhew, I. C., Lee, C. M., & Kaysen, D. (2015). Resilience in community: A social ecological development model for young adult sexual minority women. *American Journal of Community Psychology*, *55*(1–2), 179–190.

Education

- Bradford, J., Reisner, S. L., Honnold, J. A., & Xavier, J. (2013). Experiences of transgender-related discrimination and implications for health: Results from the Virginia transgender health initiative study. *American Journal of Public Health*, *103*(10), 1820–1829.
- Cenat, J. M., Blais, M., Hebert, M., Lavoie, F., & Guerrier, M. (2015). Correlates of bullying in Quebec high school students: The vulnerability of sexual-minority youth. *Journal of Affective Disorders*, *183*, 315–321.
- Collier, K. L., Bos, H. M. W., & Sandfort, T. G. M. (2013). Homophobic name-calling among secondary school students and its implications for mental health. *Journal of Youth and Adolescence*, *42*(3), 363–375.
- Craig, S. L., & Smith, M. S. (2014). The impact of perceived discrimination and social support on the school performance of multi-ethnic sexual minority youth. *Youth & Society*, *46*(1), 30–50.
- Ellis, S. J. (2009). Diversity and inclusivity at university: A survey of the experiences of lesbian, gay, bisexual and trans (LGBT) students in the UK. *Higher Education*, *57*(6), 723–739.
- Greytak, E. A., Kosciw, J. G., & Boesen, M. J. (2013). Putting the “T” in “Resource”: The benefits of LGBT-related school resources for transgender youth. *Journal of LGBT Youth*, *10*(1–2), 45–63.
- Ioverno, S., Belser, A. B., Baiocco, R., Grossman, A. H., & Russell, S. T. (2016). The protective role of gay-straight alliances for lesbian, gay, bisexual, and questioning students: A prospective analysis. *Psychology of Sexual Orientation and Gender Diversity*, *3*(4), 397–406.
- Jacobson, A. N., Matson, K. L., Mathews, J. L., Parkhill, A. L., & Scartabello, T. A. (2017). Lesbian, gay, bisexual, and transgender inclusion: Survey of campus climate in colleges and schools of pharmacy. *Currents in Pharmacy Teaching and Learning*, *9*(1), 60–65.

- Kull, R. M., Greytak, E. A., Kosciw, J. G., & Villenas, C. (2016). Effectiveness of school district antibullying policies in improving LGBT youths' school climate. *Psychology of Sexual Orientation and Gender Diversity*, 3(4), 407–415.
- Seelman, K. L. (2016). Transgender adults' access to college bathrooms and housing and the relationship to suicidality. *Journal of Homosexuality*, 63(10), 1378–1399.
- Seelman, K. L., Forge, N., Walls, N. E., & Bridges, N. (2015). School engagement among LGBTQ high school students: The roles of safe adults and gay-straight alliance characteristics. *Children and Youth Services Review*, 57, 19–29.
- Tetreault, P. A., Fette, R., Meidlinger, P. C., & Hope, D. (2013). Perceptions of campus climate by sexual minorities. *Journal of Homosexuality*, 60(7), 947–964.
- Toomey, R. B., McGuire, J. K., & Russell, S. T. (2012). Heteronormativity, school climates, and perceived safety for gender nonconforming peers. *Journal of Adolescence*, 35(1), 187–196.
- Watson, R. J., Wheldon, C. W., & Russell, S. T. (2015). How does sexual identity disclosure impact school experiences? *Journal of LGBT Youth*, 12(4), 385–396.
- Woodford, M. R., Han, Y., Lcsw, S. C., Msw, C. L., & Matney, M. M. (2013). Discrimination and mental health among sexual minority college students: The type and form of discrimination does matter. *Journal of Gay & Lesbian Mental Health*, 18(2), 37–41.
- Woodford, M. R., Kulick, A., & Atteberry, B. (2015). Protective factors, campus climate, and health outcomes among sexual minority college students. *Journal of Diversity in Higher Education*, 8(2), 73–87.
- Ybarra, M. L., Mitchell, K. J., Palmer, N. A., & Reisner, S. L. (2015). Online social support as a buffer against online and offline peer and sexual victimization among U.S. LGBT and non-LGBT youth. *Child Abuse and Neglect*, 39, 123–136.

Work

- Averett, P., Yoon, I., & Jenkins, C. L. (2013). Older lesbian experiences of homophobia and ageism. *Journal of Social Service Research*, 39(1), 3–15.
- Bauer, G., Nussbaum, N., Travers, R., Munro, L., Pyne, J., & Redman, N. (2011). We've got work to do: Workplace discrimination and employment challenges for trans people in Ontario. <http://transpulseproject.ca/wp-content/uploads/2011/05/E3English.pdf>
- Bauermeister, J. A., Meanley, S., Hickok, A., Pingel, E., Vanhemert, W., & Loveluck, J. (2014). Sexuality-related work discrimination and its association with the health of sexual minority emerging and young adult men in the Detroit Metro Area. *Sexuality Research and Social Policy*, 11(1), 1–10.
- Bradford, J., Reisner, S. L., Honnold, J. A., & Xavier, J. (2013). Experiences of transgender-related discrimination and implications for health: Results from the Virginia transgender health initiative study. *American Journal of Public Health*, 103(10), 1820–1829.
- Burgess, D., Lee, R., Tran, A., & Van Ryn, M. (2008). Effects of perceived discrimination on mental health and mental health services utilization among gay, lesbian, bisexual and transgender persons. *Journal of LGBT Health Research*, 3(4), 1–14.
- Chamberland, L., Bernier, M., Lebreton, C., Richard, G., & Thérèse-Séguin, J. (2007). *Gais et lesbiennes en milieu de travail. Rapport synthèse de recherche*. Université du Québec à Montréal Iref, 122.

- Croteau, J. M., & Lark, J. S. (2009). On being lesbian, gay or bisexual in student affairs: A national survey of experiences on the job. *Journal of Student Affairs Research and Practice*, 46(3), 382–394.
- Eliason, M. J., Dibble, S. L., & Robertson, P.A. (2011). Lesbian, gay, bisexual, and transgender (LGBT) physicians' experiences in the workplace. *Journal of Homosexuality*, 58(10), 1355–1371.
- Gates, T. G., & Mitchell, C. G. (2013). Workplace stigma-related experiences among lesbian, gay, and bisexual workers: Implications for social policy and practice. *Journal of Workplace Behavioral Health*, 28(3), 159–171.
- Hartzell, E., Frazer, M. S., Wertz, K., & Davis, M. (2009). *The state of transgender California: Results from the 2008 California Transgender Economic Health Survey*. San Francisco, CA: Transgender Law Center.
- Herek, G. M. (2009). Hate crimes and stigma-related experiences among sexual minority adults in the United States. *Journal of Interpersonal Violence*, 24(1), 54–74.
- Herrschaft, D., Bloem, E., Luther, S., Fidas, D., & Delpercio, A. (2009). *Degrees of equality: A national study examining workplace climate for LGBT employees*. Washington DC: Human Rights Campaign Foundation.
- Jones, M., & Williams, M. L. (2015). Twenty years on: Lesbian, gay and bisexual police officers' experiences of workplace discrimination in England and Wales. *Policing and Society*, 25(2), 188–211.
- Kattari, S. K., Whitfield, D. L., Walls, N. E., Langenderfer-Magruder, L., & Ramos, D. (2016). Policing gender through housing and employment discrimination: Comparison of discrimination experiences of transgender and cisgender LGBTQ individuals. *Journal of the Society for Social Work and Research*, 7(3), 427–447.
- Luiggi-Hernández, J. G., Laborde Torres, G. E., González Domínguez, J., Carrasquillo Sánchez, G. M., Meléndez, M. P., Castro Medina, D. M., González Rentas, C. D., et al. (2015). Outing the discrimination towards LGBT people during the hiring process: What about their well-being? *Revista Puertorriqueña De Psicología*, 26(2), 194–213.
- One Colorado Education Fund (2010). *A conversation with Coloradans*. http://www.one-colorado.org/wp-content/uploads/2010/10/SurveyResults_BigBook.pdf
- Pew Research Center. (2013). *A survey of LGBT americans: Attitudes, experiences and values in changing times*. http://www.pewsocialtrends.org/files/2013/06/SDT_LGBT-Americans_06-2013.pdf
- Rosky, C., Mallory, C., Smith, J., & Badgett, L. M.V. (2011). Employment discrimination against LGBT persons. *The Georgetown Journal of Gender and The Law*, 16, 103.
- Sasso, T., & Ellard-Gray, A. (2015). *In & Out: Diverging perspectives on LGBT inclusion in the workplace*. Ottawa, Ontario: Canadian Centre for diversity and Inclusion.
- Schneider, M. S., & Dimito, A. (2010). Factors influencing the career and academic choices of lesbian, gay, bisexual, and transgender people. *Journal of Homosexuality*, 57(10), 1355–1369.
- Whitfield, D. L., Walls, N. E., Langenderfer-Magruder, L., & Clark, B. (2014). Queer is the new black? Not so much: Racial disparities in anti-LGBTQ discrimination. *Journal of Gay and Lesbian Social Services*, 26(4), 426–440.

Access to Housing

- Ahmed, A. M., Andersson, L., & Hammarstedt, M. (2008). Are lesbians discriminated against in the rental housing market? Evidence from a correspondence testing experiment. *Journal of Housing Economics*, 17(3), 234–238.
- Ahmed, A. M., & Hammarstedt, M. (2009). Detecting discrimination against homosexuals: Evidence from a field experiment on the internet. *Economica*, 76(303), 588–597.
- Averett, P., Yoon, I., & Jenkins, C. L. (2013). Older lesbian experiences of homophobia and ageism. *Journal of Social Service Research*, 39(1), 3–15.
- Bauermeister, J. A., Eaton, L., Andrzejewski, J., Loveluck, J., VanHemert, W., & Pingel, E. S. (2015). Where you live matters: Structural correlates of HIV risk behavior among young men who have sex with men in metro Detroit. *AIDS and Behavior*, 19(12), 2358–2369.
- Bradford, J., Reisner, S. L., Honnold, J. A., & Xavier, J. (2013). Experiences of transgender-related discrimination and implications for health: Results from the Virginia transgender health initiative study. *American Journal of Public Health*, 103(10), 1820–1829.
- Friedman, S., Reynolds, A., & Scovill, S. (2013). An estimate of housing discrimination against same-sex couples. <https://ssrn.com/abstract=2284243>
- Grant, J. M., Mottet, L. a, Tanis, J., Harrison, J., Herman, J. L., & Keisling, M. (2011). *Injustice at every turn: A report of the National Transgender Discrimination Survey*. Washington DC: National Center for Transgender Equality and National Gay and Lesbian Task Force.
- Herek, G. M. (2009). Hate crimes and stigma-related experiences among sexual minority adults in the United States. *Journal of Interpersonal Violence*, 24(1), 54–74.
- Kattari, S. K., Whitfield, D. L., Walls, N. E., Langenderfer-Magruder, L., & Ramos, D. (2016). Policing gender through housing and employment discrimination: Comparison of discrimination experiences of transgender and cisgender LGBTQ individuals. *Journal of the Society for Social Work and Research*, 7(3), 427–447.
- Langowski, J., Mcginn, C., Langowski, J., Berman, W. L., Hol-loway, R., & Mcginn, C. (2017). Transcending prejudice: Gender identity and expression-based discrimination in the metro Boston rental housing market. *Yale Journal of Law & Feminism*, 29(2).
- Lauster, N., & Easterbrook, A. (2011). No room for new families? A field experiment measuring rental discrimination against same-sex couples and single parents. *Social Problems*, 58(3), 389–409.
- O'Connor, J. L. (2014). *Gender congruency and gender trajectory: Predicting transgender discrimination in four contexts* (Doctoral dissertation, University of North Carolina). Available from ProQuest Dissertations and Theses database. (UMI No. 1563961).
- Seelman, K. L. (2014). Transgender individuals' access to college housing and bathrooms: Findings from the National Transgender Discrimination Survey. *Journal of Gay and Lesbian Social Services*, 26(2), 186–206.
- Seelman, K. L., Walls, N. E., Hazel, C., & Wisneski, H. (2012). Student school engagement among sexual minority students: Understanding the contributors to predicting academic outcomes. *Journal of Social Service Research*, 38(1), 3–17.
- Swank, E., Fahs, B., & Frost, D. M. (2013). Region, social identities, and disclosure practices as predictors of heterosexist discrimination against sexual minorities in the United States. *Sociological Inquiry*, 83(2), 238–258.
- Whitfield, D. L., Walls, N. E., Langenderfer-Magruder, L., & Clark, B. (2014). Queer is the new black? Not so much: Racial disparities in anti-LGBTQ discrimination. *Journal of Gay and Lesbian Social Services*, 26(4), 426–440.

Health and Social Services

- Austin, E. L. (2013). Sexual orientation disclosure to health care providers among urban and non-urban southern lesbians. *Women and Health, 53*(1), 41–55.
- Barefoot, K. N., Smalley, K. B., & Warren, J. C. (2015). Psychological distress and perceived barriers to care for rural lesbians. *Journal of Gay & Lesbian Mental Health, 19*(4), 347–369.
- Bradford, J., Reisner, S. L., Honnold, J. A., & Xavier, J. (2013). Experiences of transgender-related discrimination and implications for health: Results from the Virginia transgender health initiative study. *American Journal of Public Health, 103*(10), 1820–1829.
- Coleman, T. A., Bauer, G. R., Aykroyd, G., Powell, L., & Pugh, D. (2016). Mental health service use in a sample of gay, bisexual, and other men who have sex with men living in Middlesex County, Ontario, Canada: An exploratory analysis. *Canadian Journal of Community Mental Health, 35*(3), 1–24.
- Cruz, T. M. (2014). Assessing access to care for transgender and gender nonconforming people: A consideration of diversity in combating discrimination. *Social Science and Medicine, 110*, 65–73.
- DeHart, D. D. (2008). Breast health behavior among lesbians: The role of health beliefs, heterosexism, and homophobia. *Women and Health, 48*(4), 409–427.
- Eaton, L. A., Driffin, D. D., Kegler, C., Smith, H., Conway-Washington, C., White, D., & Cherry, C. (2015). The role of stigma and medical mistrust in the routine health care engagement of black men who have sex with men. *American Journal of Public Health, 105*(2), 75–82.
- Eliason, M. J., Dibble, S. L., & Robertson, P. A. (2011). Lesbian, gay, bisexual, and transgender (LGBT) physicians' experiences in the workplace. *Journal of Homosexuality, 58*(10), 1355–1371.
- Kattari, S. K., & Hasche, L. (2016). Differences across age groups in transgender and gender non-conforming people's experiences of health care discrimination, harassment, and victimization. *Journal of Aging and Health, 28*(2), 285–306.
- Kattari, S. K., Walls, N. E., Whitfield, D. L., & Langenderfer-Magruder, L. (2015). Racial and ethnic differences in experiences of discrimination in accessing health services among transgender people in the United States. *International Journal of Transgenderism, 16*(2), 68–79.
- Li, C.-C., Matthews, A. K., Aranda, F., Patel, C., & Patel, M. (2015). Predictors and consequences of negative patient-provider interactions among a sample of african american sexual minority women. *LGBT Health, 2*(2), 140–146.
- Macapagal, K., Bhatia, R., & Greene, G. J. (2016). Differences in healthcare access, use, and experiences within a community sample of racially diverse lesbian, gay, bisexual, transgender, and questioning emerging adults. *LGBT Health, 3*(6), 434–442.
- Mosack, K. E., Brouwer, A. M., & Petroll, A. E. (2013). Sexual identity, identity disclosure, and health care experiences: Is there evidence for differential homophobia in primary care practice? *Women's Health Issues, 23*(6), 341–346.
- Owens, G. P., Riggle, E. D. B., & Rostosky, S. S. (2007). Mental health services access for sexual minority individuals. *Sexuality Research and Social Policy, 4*(3), 92–99.
- Quinn, G. P., Sutton, S. K., Winfield, B., Breen, S., Canales, J., Shetty, G., Sehovic, I., et al. (2015). Lesbian, gay, bisexual, transgender, queer/questioning (LGBTQ) perceptions and health care experiences. *Journal of Gay & Lesbian Social Services, 27*(2), 246–261.
- Reilly, K. H., Neaigus, A., Jenness, S. M., Wendel, T., Marshall, D. M., & Hagan, H. (2015). Experiences of

discrimination and HIV risk among men who have sex with men in New York City. *American Journal of Men's Health*, 10(6), 505-514.

Reisner, S. L., Pardo, S. T., Gamarel, K. E., Hughto, J. M. W., Pardee, D. J., & Keo-Meier, C. L. (2015). Substance use to cope with stigma in healthcare among U.S. female-to-male trans masculine adults. *LGBT Health*, 2(4), 324-332.

Shipherd, J. C., Green, K. E., & Abramovitz, S. (2010). Transgender clients: Identifying and minimizing barriers to mental health treatment. *Journal of Gay and Lesbian Mental Health*, 14(2), 94-108.

Steele, L. S., Ross, L. E., Epstein, R., Strike, C., & Goldfinger, C. (2008). Correlates of Mental Health Service use among lesbian, gay, and bisexual mothers and prospective mothers. *Women and Health*, 47(3), 95-112.

Tracy, J. K., Lydecker, A. D., & Ireland, L. (2010). Barriers to cervical cancer screening among lesbians. *Journal of Women's Health*, 19(2), 229-237.

Neighbourhood

Croff, J. M., Hubach, R. D., Currin, J. M., & Frederick, A. F. (2017). Hidden rainbows: Gay bars as safe havens in a socially conservative area since the Pulse Nightclub massacre. *Sexuality Research and Social Policy*, 14(2), 233-240.

Duncan, D. T., Hatzenbuehler, M. L., & Johnson, R. M. (2014). Neighborhood-level LGBT hate crimes and current illicit drug use among sexual minority youth. *Drug and Alcohol Dependence*, 135, 65-70.

Duncan, D. T., Park, S. H., Goedel, W. C., Kreski, N. T., Morgan-stein, J. G., Hambrick, H. R., Jean-Louis, G., et al. (2017). Perceived neighborhood safety is associated with poor sleep health among gay, bisexual, and other men who have sex with men in Paris, France. *Journal of Urban Health: Bulletin of the New York Academy of Medicine*, 94(3), 399-407.

Hatzenbuehler, M. L., Bellatorre, A., Lee, Y., Finch, B. K., Muennig, P., & Fiscella, K. (2014). Structural stigma and all-cause mortality in sexual minority populations. *Social Science and Medicine*, 103, 33-41.

Hatzenbuehler, M. L., Duncan, D., & Johnson, R. (2015). Neighborhood-level LGBT hate crimes and bullying among sexual minority youths: A geospatial analysis. *Violence and Victims*, 30(4), 663-675.

Hatzenbuehler, M. L., Jun, H. J., Corliss, H. L., & Bryn Austin, S. (2015). Structural stigma and sexual orientation disparities in adolescent drug use. *Addictive Behaviors*, 46, 14-18.

Kelly, B. C., Carpiano, R. M., Easterbrook, A., & Parsons, J. T. (2014). Exploring the gay community question: Neighborhood and network influences on the experience of community among urban gay men. *Sociological Quarterly*, 55(1), 23-48.

Reisner, S. L., Pardo, S. T., Gamarel, K. E., Hughto, J. M. W., Pardee, D. J., & Keo-Meier, C. L. (2015). Substance use to cope with stigma in healthcare among U.S. female-to-male trans masculine adults. *LGBT Health*, 2(4), 324-332.

Tran, A. G. T. T. (2015). In these spaces: Perceived neighborhood quality as a protective factor against discrimination for lesbian, gay, and bisexual (LGB) adults. *Psychology of Sexual Orientation and Gender Diversity*, 2(3), 345–352.

Zimmerman, L., Darnell, D. A., Rhew, I. C., Lee, C. M., & Kay-sen, D. (2015). Resilience in community: A social ecological development model for young adult sexual minority women. *American Journal of Community Psychology*, 55(1–2), 179–190.

Sports

Atteberry-Ash, B., & Woodford, M. R. (2017). Support for policy protecting LGBT student athletes among heterosexual students participating in club and intercollegiate sports. *Sexuality Research and Social Policy*, 1–12.

Calzo, J. P., Roberts, A. L., Corliss, H. L., Blood, E. A., Kroshus, E., & Austin, S. B. (2014). Physical activity disparities in heterosexual and sexual minority youth ages 12–22 years old: Roles of childhood gender nonconformity and athletic self-esteem. *Annals of Behavioral Medicine*, 47(1), 17–27.

Doull, M., Watson, R. J., Smith, A., Homma, Y., & Saewyc, E. (2016). Are we leveling the playing field? Trends and disparities in sports participation among sexual minority youth in Canada. *Journal of Sport and Health Science*, 1–9.

Elling, A., Janssens, J., & Mulier, W. J. H. (2009). Sexuality as a structural principle in sport participation: Negotiating sports spaces. *International Review for the Sociology of Sport*, 44(1), 71–86.

Sartore, M. L., & Cunningham, G. B. (2009). Gender, sexual prejudice and sport participation: Implications for sexual minorities. *Sex Roles*, 60(1–2), 100–113.

Community and Spiritual Life

Dahl, A. L., & Galliher, R. V. (2009). LGBQQ young adult experiences of religious and sexual identity integration. *Journal of LGBT Issues in Counseling*, 3(2), 92–112.



SAVIE | LGBTQ
RECHERCHE PARTENARIALE