

OFF

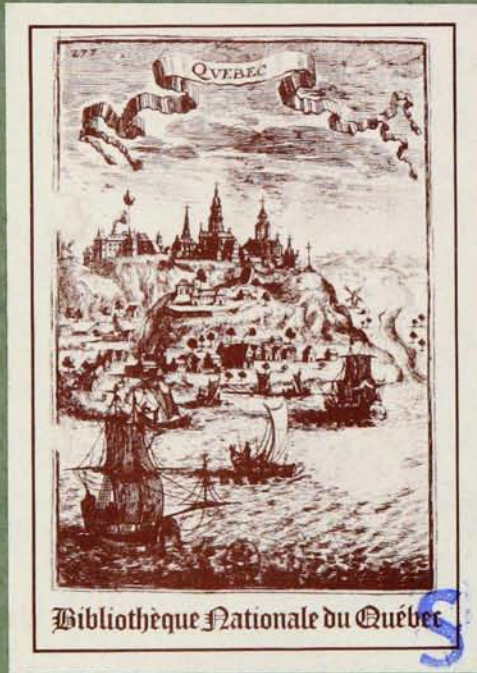
V6T6

A14/

R64-

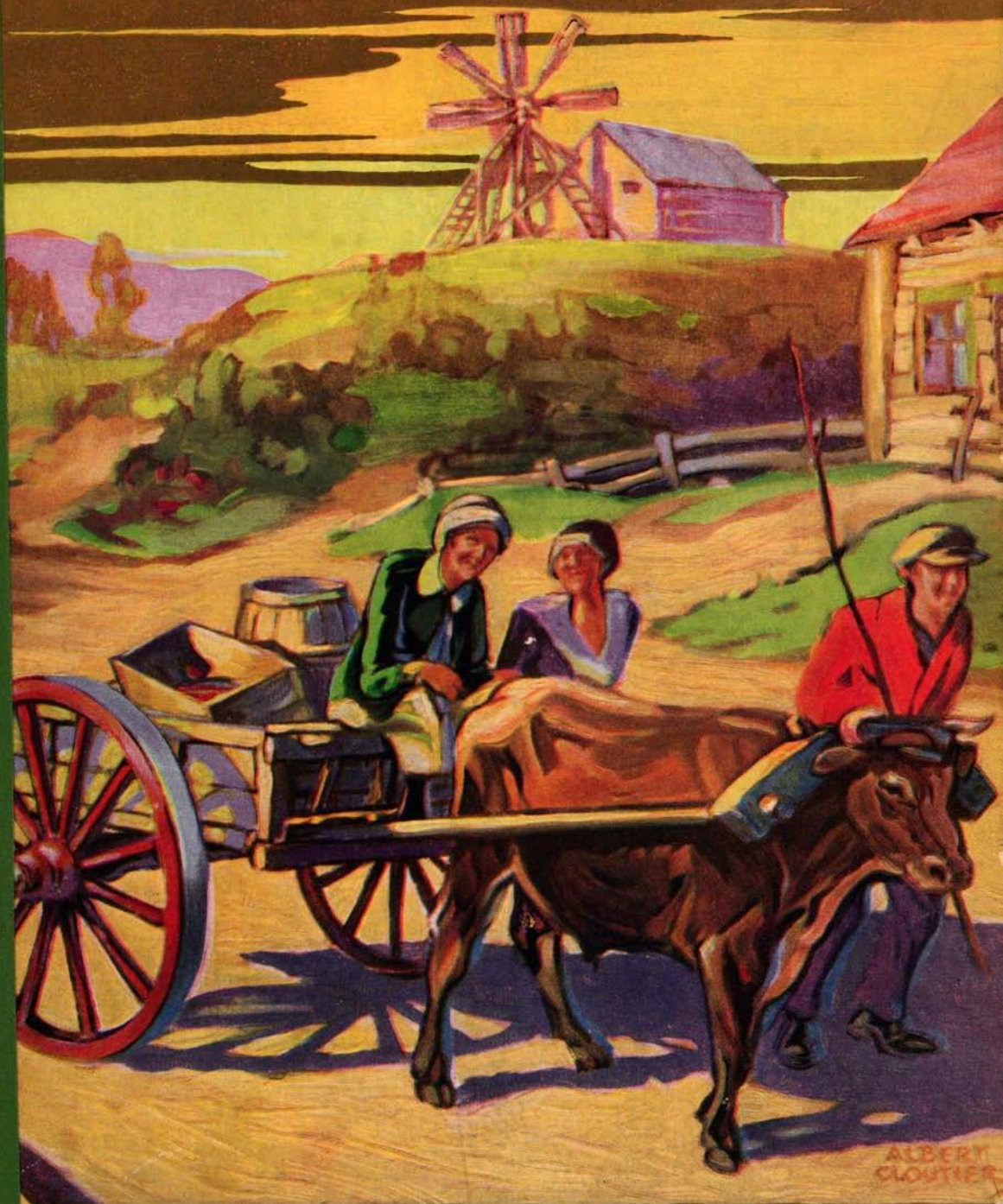
1929

A



Bibliothèque Nationale du Québec

Romantic Quebec  
GASPIE PENINSULA



PUBLISHED BY THE TOURIST BUREAU  
ROADS DEPARTMENT QUEBEC CANADA



P 917.14 79  
R 62 a  
2000

## FOREWORD

THE Department of Highways, in offering the present booklet to the travelling public, is but taking a further step in the carrying out of a program, inaugurated some years ago, whose purpose is to promote recognition and appreciation of the beauties and richness in natural resources of that marvellous land, the Province of Quebec.

Covered, in every sense of the word, by a network of splendid highways, the Province of Quebec, center of French culture in America, is each year the rendez-vous of hundreds of thousands of tourists from all parts of the world.

One section of this extensive Province, the Gaspé Peninsula, has heretofore remained practically unknown to the traveller.

History records the fact that Gaspé was the first-known region in America.

From the point of view of the tourist, it is an incomparable land whose panoramas are scenic displays worthy of treatment by the greatest artists.

Gaspé and its magnificent Baie des Chaleurs, aptly called the "Mediterranean of North America", its many bays bounded by the most beautiful sandy beaches on the continent; its capes, severe in aspect but how imposing! its mountains of well-defined contour and varied form; the village of Gaspé and its pretty bay, long-expected to become the national winter port; and that unique marvel, Percé and its mysterious giant-arched rock. These are the peerless beauties which the Department of Highways presents to the admiration of the tourist, through the construction of the excellent highway that encircles the Gaspé Peninsula: the Perron Boulevard.

Let the few following pages serve to bring about a just appreciation of a region too-long unregarded, and the labour expended thereon will be amply justified.

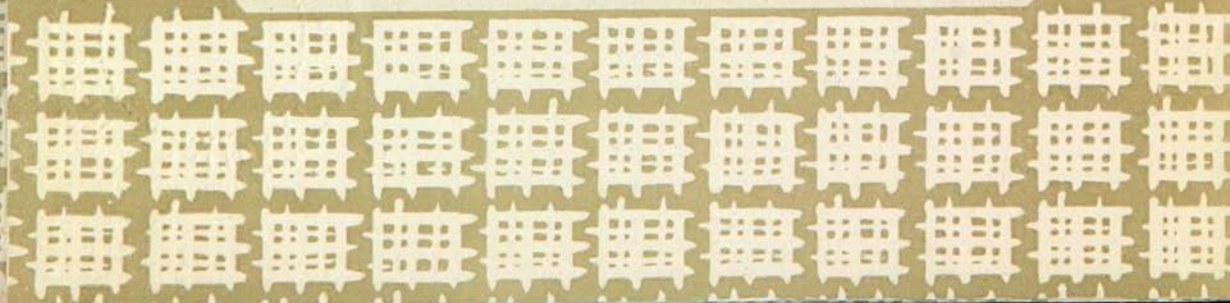
PRINTED IN CANADA

OFF  
V6T6  
A14/R64-  
1929  
A

15



ON THE PERRON BOULEVARD



# The Gaspé Peninsula

## ITS GEOGRAPHICAL POSITION

**G**ASPÉ Peninsula is that part of the Province of Quebec situated between the St. Lawrence River and the Baie des Chaleurs, covering an area of 7,300,000 acres, or 11,400 square miles, and extending into the Gulf of St. Lawrence over a distance of approximately 170 miles.

It includes the four provincial counties of Bonaventure, Gaspé, Matane and Matapédia.

The tour of the Gaspé Peninsula, following the Perron Boulevard, is more than 550 miles in length, of which approximately 460 skirt the Baie des Chaleurs, the St. Lawrence River, and the Gulf, where the magnificent panorama is a sight second to none on the American continent.

## THE CLIMATE

The slight difference observed between the climate of the Peninsula and that of the interior of the Province of Quebec is due to the great air current coming from the Labrador, the current from the Atlantic in mid-latitude, and the varying currents of the interior of the continent.

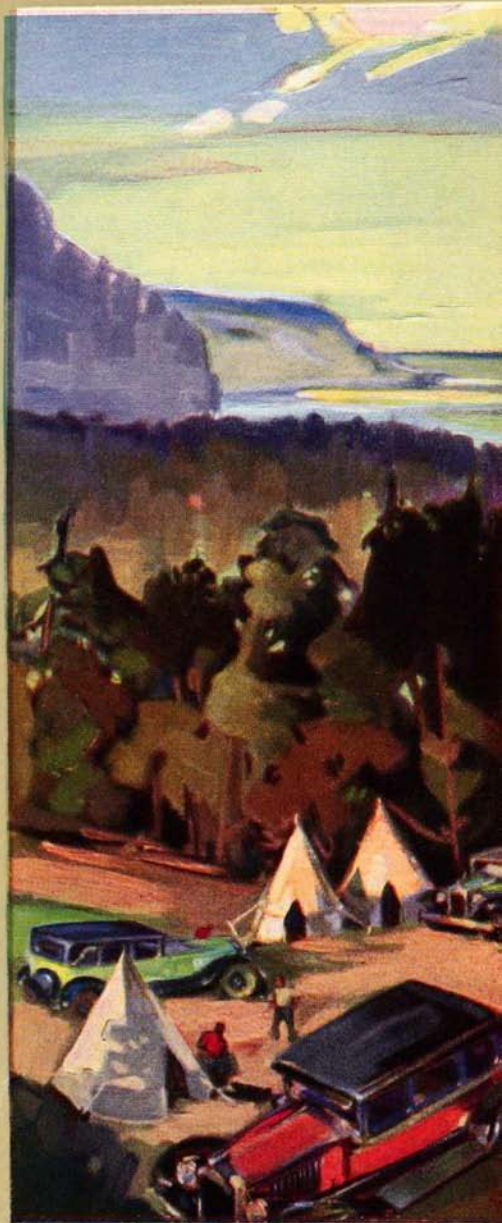
## TOPOGRAPHY

The North shore of the Gaspé Peninsula is bordered with high cliffs and has neither bays nor harbors. The southern coast, on the contrary, is noted for its wonderful sandy beaches which are becoming more and more popular and are frequented every year by thousands of tourists.

Along an east and west axis, whose distance from the St. Lawrence River varies from 12 to 25 miles, lie the Shickshocks mountains, the extreme part of the Appalachian system which enters into the Province of Quebec through the States of New Hampshire and Vermont, and extends as far as the southern coast of the St. Lawrence below Rimouski.

The Shickshocks mountains, very interesting from a scientific point of view, are characterized by remarkable summits the highest of which are Mount Albert and Tabletop. Between these two lies the deep valley of the Ste. Anne River.

Tabletop Mountain, whose elevation is 4450 feet, is the highest peak in the Southeastern Canada.



## POPULATION of the GASPÉ PENINSULA

The following table shows the possibilities as to population of the Gaspé Peninsula, were its natural resources brought under active development:

STATE OR COUNTRY	POPULATION	AREA IN SQUARE MILES	POPULATION PER SQUARE MILES
Gaspé Peninsula .....	102,515	11,400	9.00
Prince Edward Island .....	88,615	2,184	40.58
Rhode Island .....	600,000	1,000	600.00
Connecticut .....	1,300,000	5,000	260.00
Massachusetts .....	3,850,000	8,000	481.25
Vermont .....	350,000	9,000	38.89
New Hampshire .....	450,000	9,000	50.00
New Jersey .....	3,000,000	8,000	375.00
Grand Duché de Luxembourg .....	250,000	1,000	250.00
Holland .....	6,000,000	12,000	500.00
Belgium .....	8,000,000	12,000	666.67
Switzerland .....	3,800,000	16,000	237.50

From the summit of Mount Albert, whose altitude is 4,000 feet, on a clear day the visitor may have a good view of the north shore of the St. Lawrence, distant about seventy miles.

### ITS GEOLOGICAL FORMATION

The Gaspé Peninsula, from a geological point of view, constitutes the northern part of the Appalachian folds, and is formed almost exclusively of sedimentary, volcanic and intrusive rocks ranging in age from pre-Cambrian to Carboniferous.

Following is the brief opinion of the Canadian geologist, Mgr Laflamme: "One would have a very good idea of the orography of this region could he conceive the instantaneous freezing of the waves of the Atlantic beating the American shores under the action of an oceanic breeze. There are the same alternate elevations and depressions of the surface, not

## CLIMATE of the GASPÉ PENINSULA

The following tables, compiled by the Meteorological Service of Canada, give a general survey of climatic conditions prevailing in the Gaspé Peninsula:

	Jan.	April	May	June	July	Aug.	Sept.
Mean Daily Temperature (Fahrenheit)							
Gaspé .....	8	33	45	56	64	63	52
Percé .....	..	33	44	54	59	60	53
Mean Daily Highest Temperature							
Gaspé .....	18	42	54	67	76	72	63
Percé .....	..	40	51	62	67	67	60
Mean Daily Lowest Temperature							
Gaspé .....	-2	25	36	45	52	54	41
Percé .....	-	27	37	46	52	53	47

excepting the parasitic waves that are found on the flanks of the main undulations. To render the analogy more complete, it is only necessary to recall that these terrestrial waves, like those of the ocean, were caused by a power from the Atlantic, which has been felt since the beginning of the geological ages. "The terrestrial surface was corrugated in the same manner as the ocean breeze ripples the shore waters".

### MINERALS

Exploration carried on in this region during the past few years has brought about the discovery of sulphides which shows that bodies of ore are likely to be found in the neighbourhood.

In fact, the discovery of copper, lead and zinc ores have been made at the head waters of the York and Marsoui Rivers, in Mann and Newport Townships, but the most important occurrences are in Lemieux Township, in the interior of the Peninsula, forty miles from Cascapédia. Occurrences of iron ores at Newport and antimony ore at New Richmond have also been reported.

The serpentine rocks found in the Gaspé Peninsula indicate that asbestos is likely to occur in this region.



A STREET IN THE VILLAGE OF GASPÉ

Indications of oil were first noted by Sir W. E. Logan in 1844.

Unfortunately, the 52 wells sunk in 1891 and 1892 proved that nothing of commercial value had been found.

Considerable progress has been made in Lemieux Township, where are located the properties of the Federal Lead and Zinc Co. Ltd., the Gaspé Mines, T. O. Lyall, the Huronian Belt Co. Ltd., and the Pioneer Mining Corporation. Work has been carried on during the past few years without publicity, and a large number of perfectly defined and well mineralized veins have been exposed.

Underground work has been carried on as at the Federal Mine which has opened up an important orebody. Dr. Alcock who has examined the property for the Geological Survey of Canada expresses himself thus:

"The development which has been carried out so far indicates that there is a large quantity of ore in sight. With regard to the persistence of the veins in depth, vein outcrops have been found throughout a vertical depth of 560 feet. It is probable that such strong veins as the Federal, the Porphyry, the McKinlay, and others extend to greater depths than this. It is commonly assumed that a vein is as deep as it is long; hence a depth of 1000 feet, or even considerably more, is quite to be expected. Should this prove to be the case, the Federal would have an available tonnage that would make it one of the large zinc properties of America.

"Although the oldest of all the sections of Québec, Gaspé has been the least prospected. The discoveries of recent years open a field of new possibilities. The interior of Gaspé might well be taken into account in calculating the wealth of the Peninsula."

To develop the mineral possibilities of the interior of the Peninsula, the Provincial government has built fifty miles of good gravel road, skirting high hills, well-timbered, beautiful valleys, along the clear waters of the Caspédia River.

### POPULATION

According to the Municipal Statistics for the civil year 1927, the population is 102,515, the inhabitants being of French, English, Acadian, Jersey and Indian descent.

Since 1851, date of the first Federal census, the population has increased from 21,748 to 102,515 souls. The various groups, although quite different in language, religion, and customs, live peacefully together and form the most cosmopolitan rural population of the Province of Québec.



## HISTORICAL GASPESIA

On the 24th of July 1534, Jacques Cartier, the explorer of Canada, landed at Gaspé on his first voyage to the American continent.

According to historians, however, the Gaspé Peninsula was visited earlier, namely in the twelfth century, by Greenlanders and Icelanders.

Gaspé was made famous by Cartier, Champlain, de Monts, and many other personages who sojourned there at different periods.

In 1638, an Acadian colony was founded at the mouth of the Ristigouche River.

Missionaries visited this far off region frequently, and in the year 1673 the Recollet Fathers established missions at Percé and Bonaventure Island.

The Gaspé Peninsula had also to sustain, at various times, the attacks of the enemies of New France.

The first, according to history, was that of Phipps who destroyed the settlements of Percé and Bonaventure Island.

Shortly after the fall of Quebec, in September 1759, 350 Acadians established at Ristigouche, were made prisoners and brought into captivity.

In 1758, an English force consisting of 1500 men and 7 warships completely destroyed the fishing stations between Gaspé and Louisbourg.

After the declaration of American Independence, many Loyalists, preferring to remain British subjects, settled on the shore of Baie des Chaleurs.

After this distressful period, the population, which had been plunged into desolation, set to work again, and then began a prosperous era thanks to the influence which the missionaries exercised on those unhappy Acadians.

Later, the government took exceptional interest in this far off region and established colonization, which brought about fruitful results.

The Gaspé Peninsula is now known to all in America, and thousands of tourists are seen each touring season in this wonderful land.

## FISHERIES

The fishing industry of the Gaspé Peninsula was carried on many centuries before the arrival of the first French explorers on this continent.

According to the opinion of historians, of which Father Christian Leclercq was the first, the Greenlanders and Icelanders possessed important fishing stations there in the twelfth century.

Benjamin Sulte states that the Basques were engaged in fishing and fur trading from the Gulf of St. Lawrence to Lake St. Peter long before the arrival of Jacques Cartier in Canada. Champlain mentions at different times the presence of Basques in the vicinity. They were replaced at a later date by Breton and Norman fishermen attracted to the fisheries of the Gulf of St. Lawrence by Jacques Cartier's account of his journey.

Later, Champlain, Sagard, the Jesuit missionaries, and especially Denys, in his "Description Géographique et Historique des Costes de l'Amérique Septentrionale", spoke with enthusiasm of the Gaspé fisheries and their inexhaustible wealth.

Below are a few words of Father Ferland, in his work entitled, "La Gaspésie", concerning the life of the Gaspé fisherman: "From sunrise to sunset, the fisherman is constantly casting lines, pulling them in, and unhooking the greedy cod. When ashore, the men, women and children are all engaged in curing and salting the cod".

For many years, commercial cod-fishing, which has made the Gaspé Peninsula so famous, has employed not only those who are exclusively engaged in this trade but also many farmers who devote their spare time to this industry.

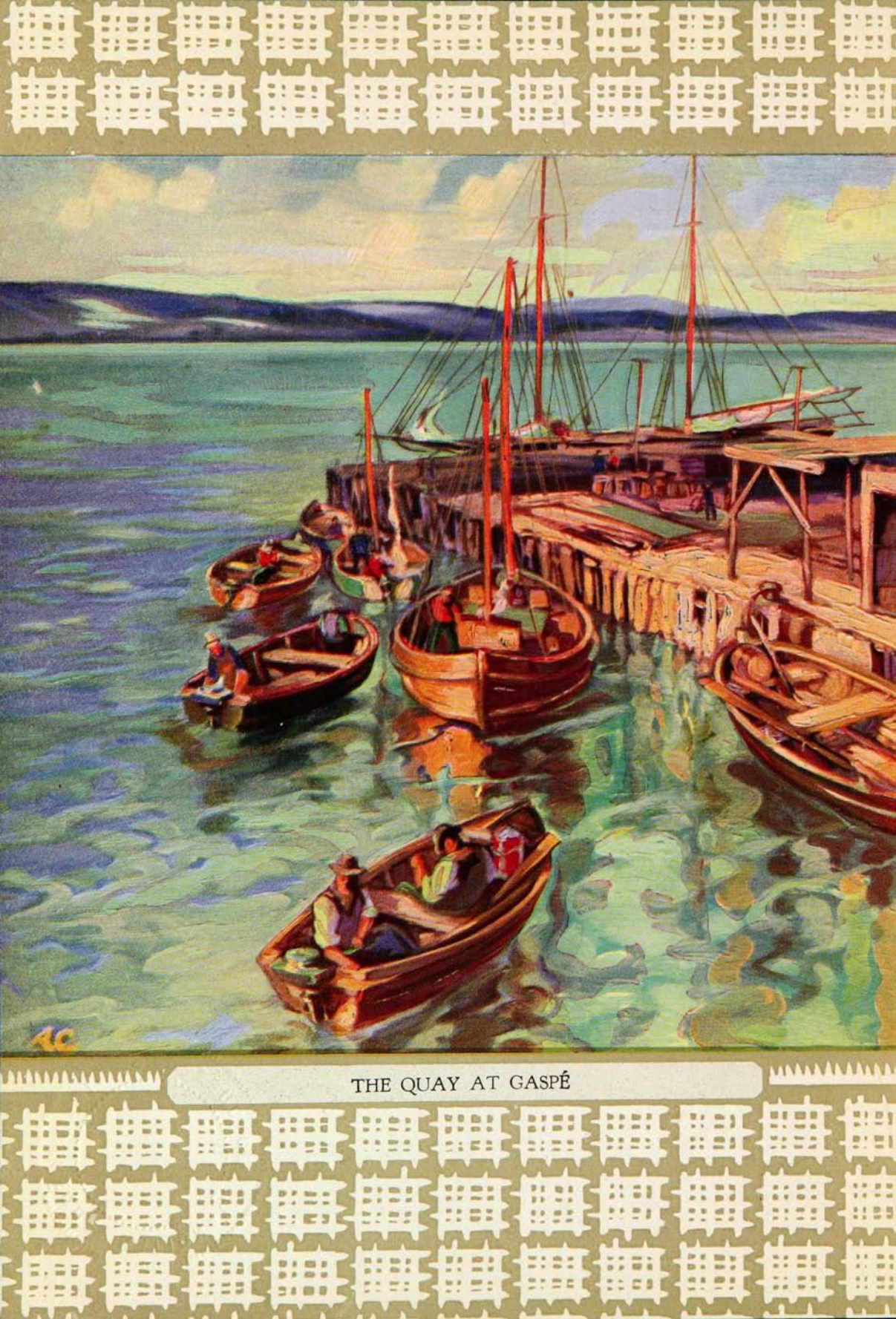
Commercial fishing comprises coastal and deep-sea fishing.

The deep-sea fishing is prosecuted in special boats with crews of from four to seven men, at a distance of from twelve to fifteen miles from shore.

J. C. Langelier, in his work "Sketch on Gaspesia", describes deep-sea fishing as follows: "The fish on the banks are taken with net lines which are from about 600 to 1200 fathoms long, held at each end by anchors. The lines are left in the water for six or eight hours, and at certain seasons, particularly in the month of September, two men very often take in, in a few hours, with a net-line of 500 fathoms, more than 6000 lbs. of cod-fish. From the 15th of June to the 15th of September, two men can take in 600 cwt. of cod-fish."

Small boats with crews of two to three men, are used for bank fishing. This is rendered possible by the abundance of coves and harbors whose presence reduces to a minimum the dangers and expense of this rigorous trade.

J. C. Langelier in the work referred to gives the following description of bank fishing: "They who leave on shore fishing, generally start at two o'clock in the morning and return at four in the evening, that they may have time to prepare their fish before dark. Each vessel is worked by two men, who fish with two lines in deep water and three in shallow water. When the fish bite well, the men have not a moment to rest. While they are taking one fish off the hook, the other line is being pulled in. Each line has two hooks, and when the fish bite well, each line heads up two fish. Thus, it very often happens that towards evening you may see two men coming in with 2000 lbs. of fish".



THE QUAY AT GASPÉ

Commercial fishing as carried on in these days, is an industry which employed nearly 4000 men in 1924.

The value of commercial fish marketed in 1924 was \$1,153,222.00, and the capital represented in vessels, boats, nets, traps, piers, wharves and ice-houses, was \$650,000.00.

The fisheries of the Gaspé Peninsula have also given rise in recent years to canning factories, which numbered 34 in 1924.

During the year 1924 the capital invested in this industry was \$406,635.00; the number of employees was 400, and the value of its products \$302,681.00. (See Table Page 12)

### FORESTRY

The Gaspé Peninsula, with its vast forests, is one of the most beautiful timbered regions of the Province of Quebec. Although fires and lumbering operations have made tremendous inroads on these resources for over forty years, it is roughly estimated that there are still over 70 million cords of available timber, of which 23 million cords are suitable for pulpwood.

The size of the timber diminishes with the altitude, and above 2500 feet spruce and balsam are found, but only of small and scrubby nature. The mountain tops are either bare or covered with a dense growth of dwarf spruce, often not more than five feet in height.

The Gaspé forests contain white birch, which is particularly abundant on the flat tops of the interfluves and grows to a large size, oak, white and black spruce, maple, ash, cherry, red and jack pine, hemlock, balsam, aspen and cedar.

(See Table Page 13)

### LUMBER INDUSTRY

The vast timbered limits of the Gaspé Peninsula ensure a remarkable future to this region, in so far as the commercial lumber industry is concerned. This is divided into two distinct categories, namely commercial timber and pulpwood.

### AGRICULTURE

From the agricultural point of view, the Gaspé Peninsula may be divided into four sections, namely: the north shore, the south shore, the interior plateau and the Matapédia valley.

(See Tables Pages 16 and 17)

### THE NORTH SHORE REGION

To-day along the North shore, particularly at the mouths of nearly all the rivers flowing into the St. Lawrence, can be seen a number of small flourishing farms which owe their prosperity to mixed farming.



**COMMERCIAL FISHERIES**  
(Referring to Fisheries, pages 8 and 9)

The following table, taken from the Federal Statistics, gives the number of industrial establishments for preparing fish, the capital invested, the number of employees and the value of products:

COUNTY	Establishments	Number of Establishments	Capital Invested	Number of Employees	Value of Products
Bonaventure	Lobster canneries	4			
	Salmon canneries	1	\$ 6,150.00	60	\$ 28,966.00
	Fish-curing establishments	5	21,210.00	17	31,604.00
Gaspé	Lobster canneries	9	113,005.00	167	49,528.00
	Fish-curing establishments	15	266,270.00	155	192,583.00
	Total	34	\$406,635.00	399	\$302,681.00

To sum up, the products of the Gaspé fisheries for the year 1924 were as follows:

2,302 cwt. of smelts	equal to	\$ 23,590.00
38,472	" " herring	68,039.00
2,482	" " lobsters	47,086.00
41,901	" " mackerel	124,470.00
105,513	" " cod	794,228.00
7,870	" " salmon	75,896.00

### THE SOUTH SHORE REGION

For many years the belief prevailed that along the south shore of the Peninsula there was no agriculturally suitable soil, and the inhabitants were therefore exclusively engaged in the development of the fishing industry.

Circumstances, however, obliged the population to resort to agriculture as means of subsistence which fishing alone could not provide, and to-day the Gaspé fisheries, which for many years were an obstacle to the development of agriculture, supply fertilizers for the land.

The soil is good and has a natural drainage; the climate is equable, with rain and snow in moderation; and seeding can be commenced in May. Besides mixed farming, small fruits are grown successfully, and excellent apple orchards can be seen at Bonaventure, Caplan, New Richmond and Paspébiac.

### THE INTERIOR PLATEAU

The interior plateau, from the farming standpoint, does not offer any interest at present because of the prevalence of early frosts, but potatoes and garden vegetables have been successfully raised.

### AMOUNT OF LUMBER CUT

(Referring to Forestry, page 11)

The following table gives the amount of lumber cut on crown lands during the years 1926, 1927 and 1928, and shows the importance of lumber industry in the Gaspé Peninsula:

REGIONS	YEAR	Area under License (Sq. Miles)	White Pine, Oak, Walnut, Saw-Logs and Boom-Timber (F.B.M.)	Red Pine, Ash, Birch, Maple, Tamarack Saw-Logs and Boom-Timber (F.B.M.)	Spruce, Balsam, Cedar, Jack Pine, Hemlock, White Birch and Aspen (F.B.M.)
Bonaventure—	1926	2,712	171,118		50,961,192
	1927	2,695	44,039		42,783,945
	1928	2,710	82,235		29,441,650
Gaspé—	1926	3,095	45,871		42,295,172
	1927	3,094	155,081		68,679,046
	1928	3,111	268,683	26,844	80,621,367
Matapédia—	1926	1,166	161,979	801	52,775,331
	1927	1,162	42,983	131,987	33,045,248
	1928	1,152	58,594	386,316	34,952,121
Rimouski—	1926	2,005	244,886	37,887	74,889,567
	1927	2,002	239,635	111,900	73,845,095
	1928	1,921	277,376	116,665	77,313,026

However, it is believed that the danger of summer frosts will diminish as the land is cleared.

### THE MATAPÉDIA VALLEY

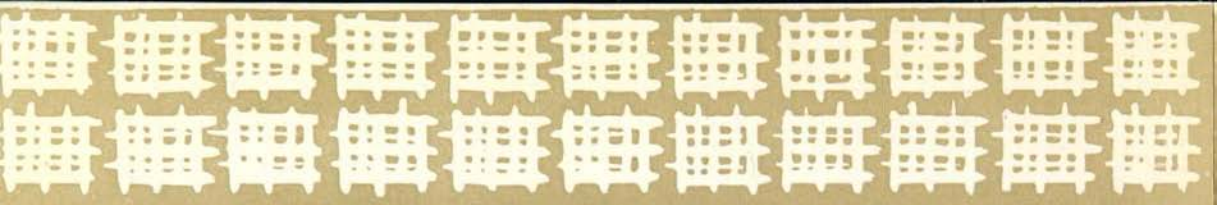
The Matapédia valley, having an area of about 1500 square miles, is traversed throughout its length by the Canadian National Railways, which give easy access from all the settlements to Québec and the Atlantic ports.

In this region, the climate is about the same as that of Québec, and frosts are practically unknown from May to October. The land is neither stony nor hilly and the soil, which is very fertile, attracts numerous colonists who become in a short time prosperous farmers.

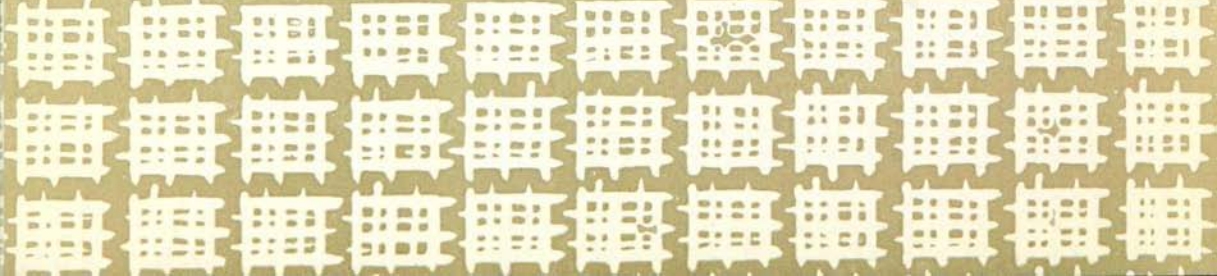
The flourishing parishes which are seen all along the Valley are among the most prosperous of the Province of Québec.

### WATER POWER

The Gaspé Peninsula has two general slopes, the larger descending to the Baie des Chaleurs and the other sloping towards the St. Lawrence River.



GASPÉ PROVIDES SPORTS FACILITIES



The majority of the following rivers offer water power possibilities: (See Table Page 17)

#### NORTHERN SLOPE

The rivers Mitis, Matane, Cap-Chat, Sainte-Anne and Dartmouth.

#### SOUTHERN SLOPE

The rivers York, Saint-Jean, Malbaie, Petit-Pabos, Grand-Pabos, Port-Daniel, Bonaventure, Petite-Cascapédia, Cascapédia, Nouvelle, Matapédia, and Patapédia.

There exist at present in the Gaspé Peninsula water power plants developing 12,000 horse power. Among the largest are the Grand Falls on the Madeleine River developing 5,930 horse power, the property of the Cap Madeleine Pulp and Lumber Co.; and the Lower St. Lawrence Power Co., at Price on the Mitis River, with an installation of 3,700 horse power, operating under a head of 120 feet. This development serves the district from Rimouski to Matane for lighting and industrial purposes, and also the town of Campbellton.

The remaining developments are chiefly in connection with sawmills, grist mills, and salmon canneries.

During the year 1922, the Quebec Streams Commission made a study of the more important rivers of the Gaspé Peninsula in order to determine in a summary way the possible development of their water powers.

The following rivers have been investigated: Cap-Chat, Dartmouth, York, Saint-Jean, Grand-Pabos, aux Renards, Nouvelle, Bonaventure, Petite Cascapédia and Grande Cascapédia.

#### HUNTING AND FISHING

The virgin forests, the indented sea-board and the marvellous salmon and trout fishing waters of the Gaspé Peninsula have made of it, in recent years, a paradise for the hunter and the fisherman.

The rugged mountains of the interior, besides their great wealth in timber, have provided for centuries a great natural range for wild game such as bear, moose, caribou, elk and deer, and for fur-bearing animals, otter, marten, fox, beaver, mink and lynx.

The bays and marshes furnish ideal feeding grounds for ducks, partridges, snipes, plovers and migratory birds.

The angling rights in most of the rivers are leased to clubs which spend annually from \$10,000.00 to \$50,000.00 on improvements, and pay for angling rights from \$1,500.00 to \$15,000.00.

The completion of the Perron Boulevard has placed these game areas within easy reach.



## SURVEY of AGRICULTURAL CONDITIONS

(Referring to Agriculture, Page 11)

The following tables, compiled from the Federal census for the year 1921, give a general survey of agricultural conditions:

<i>Farm Values 1921</i>	Bonaventure	Gaspé	Matane
Total (including land, buildings, live stock, implements and machinery)	\$18,145,853	15,217,674	22,798,073
<i>Value of Farm Products 1920</i>			
Field Crops .....	\$2,341,485	1,969,254	2,502,720
Vegetables .....	82,231	90,297	62,430
Fruits and Maple Syrup .....	25,181	4,261	11,186
Forest products .....	865,426	594,667	1,976,878
Stock sold alive .....	133,073	106,049	244,096
Stock slaughtered .....	465,514	540,375	456,688
Animal products .....	955,966	875,308	1,292,698
TOTAL.....	\$4,868,876	4,182,211	6,546,696

### *Progress of Dairy Industry in Gaspé Peninsula 1926-1927.*

COUNTY	No. of factories	BUTTER		Value of butter
		Lbs. of milk delivered	Lbs. of butter made	
<i>Bonaventure</i>				
1916	9	4,169,970	191,943	\$ 63,229
1927	16	6,877,705	324,390	114,435
<i>Gaspé</i>				
1916	3	1,894,155	88,162	29,667
1927	6	2,697,284	128,809	46,705
<i>Matane</i>				
1916	17	11,645,792	542,569	178,996
1927	13	11,642,557	517,743	179,949
<i>Matapédia</i>				
1916				
1927	8	8,188,841	399,122	139,216

## SURVEY of AGRICULTURAL CONDITIONS

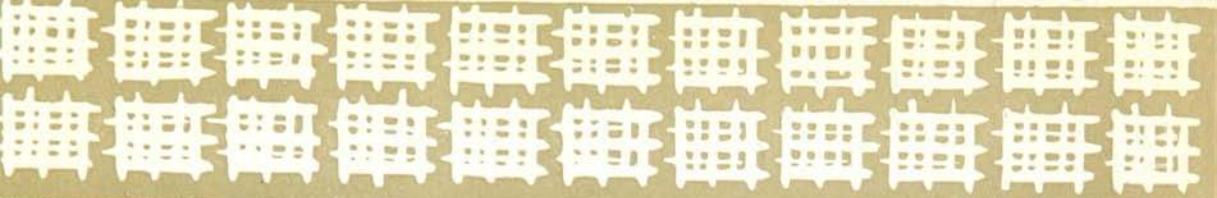
COUNTY	No. of factories	CHEESE		Value of cheese
		Lbs. of milk delivered	Lbs. of cheese made	
Bonaventure				
1916	3	823,193	85,253	\$ 15,704
1927	3	434,388	41,333	7,578
Matane				
1916	18	3,381,275	546,008	100,958
1927	5	1,929,066	188,867	33,104
Matapédia				
1916				
1927	7	1,231,987	119,380	22,456
Gaspé				
1916	None			
1927	"			

## WATER POWER

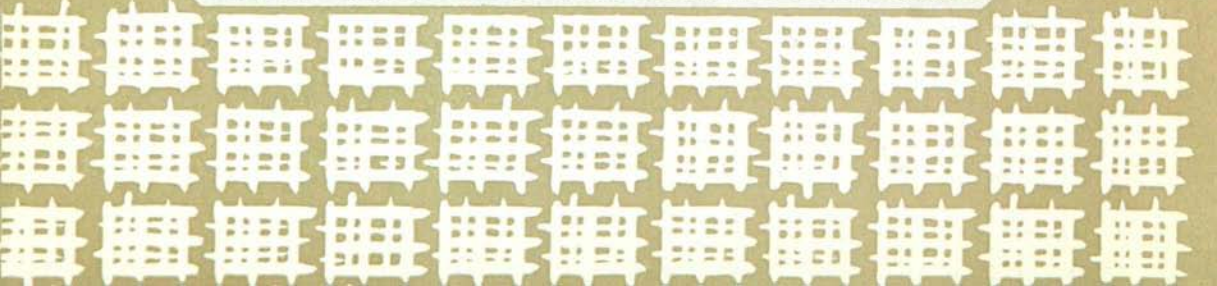
(Referring to page 13)

The following table prepared from the Quebec Streams Commission's data and from federal statistics, shows what a useful resource for the Gaspé Peninsula would be the development of these rivers:

RIVER	Head	Horse Power	Remarks
Mitis .....	75	2,380	Regulated flow
Matane .....	10	96	Minimum flow
Cap-Chat .....	415	579	" "
Madeleine .....	796	6,730	" "
Dartmouth .....	100	1,090	" "
Petite-Cascapédia...	30	530	" "
Bonaventure .....	20	500	" "
Grand-Pabos .....	147	535	" "



PERCÉ, WHERE THE TOURISTS' DREAMS COME TRUE



# The Perron Boulevard

**P**REVIOUS to 1925, the Gaspé Peninsula was possessed of practically no improved roads. On the south shore there was a colonization road, "The Lemieux Road", connecting the municipalities of the County of Bonaventure with a few parishes of the County of Gaspé. That road, though passable in dry weather for all traffic, was almost impassable in wet weather except for horse-drawn vehicles.

The north shore, particularly east of Ste. Annes-Monts, was almost without roads.

Here and there were to be found a few miles of dirt road running uphill and down dale and linking up near-by parishes which were isolated from the interior of the Province of Quebec.

In 1925, the Dept. of Roads undertook to better the condition of these roads and link up the existing sections into a continuous highway. The completion of that highway, to-day known as the Perron Boulevard, put an end to the isolation of this important region.

From Sainte-Flavie, in the County of Rimouski, to Cap des Rosiers, situated at the extreme eastern end of the Gaspé Peninsula, the Perron Boulevard skirts the St. Lawrence River; from Cap des Rosiers it runs overland to Cap-aux-Os, then along the shore of the Baie de Gaspé and the north shore of the Baie des Chaleurs as far as the junction of the Ristigouche and Matapédia Rivers, whence it runs through the pleasant Matapédia Valley to Sainte-Flavie, its starting point.

This circuitous route of over 550 miles forms one of the most interesting journeys through our Province, if not on the whole continent.

From a scenic point of view, the north shore of the Gaspé Peninsula is unexcelled and offers for the tourist's enjoyment a varied and gorgeous panorama of fascinating splendor. Off to one side of the Boulevard are the Shickshocks Mountains, whose summits attain a height of 4000 feet above sea-level.

On the other hand is the majestic St. Lawrence widening gradually up to its mouth, in impetuous volume, whence rises the smoke of the liners going up and down stream.

This part of the Gaspé Peninsula is however, less densely populated and developed than is the coast of Baie des Chaleurs. Nevertheless, the Boulevard runs through a number of industrially prosperous municipalities, and also centers where the inhabitants devote their time to agriculture, the timber industry, and fishing.



The tourist visiting the Gaspé Peninsula by travelling over the Perron Boulevard passes through many places of unique and charming picturesqueness, such as:

#### MÉTIS-SUR-MER (MÉTIS BEACH)

Métis-sur-Mer is one of the finest summer resorts on the south shore of the St. Lawrence. Its beach with gently sloping bottom is a safe play-ground affording excellent opportunity for bathing. Good hotel—and boarding house—accommodation may be had at Métis-sur-Mer where, each year, thousands of tourists spend part of their summer holidays.

#### MATANE

Matane, situated at the mouth of the river of the same name, comprises part of the Seigniorship of Matane, which was granted to Sieur D'Amours by Intendant Talon, November 8, 1662.

To-day, Matane, whose population almost reaches 4,000, is the chief industrial center of the Gaspé Peninsula.

In the surrounding district are many beautiful lakes abounding in trout.

Deep sea fishing is another very popular attraction.

Matane's magnificent sandy beach is one of the finest for bathing.

Matane is to-day widely and favorably known as a summer resort where modern hotel—and boarding house—accommodation may be obtained.

This year (1929) there will be opened in this progressive town a new modern hotel, the "Hotel Belle-Plage", a really up-to-date building of fifty rooms overlooking the majestic St. Lawrence.

Matane is also the terminus of the Canada & Gulf Terminal Railway, which connects this beautiful town with Mont-Joli.

#### CAP-CHAT

Cap-Chat is a prosperous agricultural parish, and a summer resort of great interest much sought by lovers of nature.

#### SAINTE-ANNE-DES-MONTS

Sainte-Anne-des-Monts is an important agricultural center and place of pilgrimage in honor of St. Ann, the sailor's patroness.

Due to its magnificent beach, Sainte-Anne-des-Monts is becoming a popular summer resort where hotel—and boarding house—accommodations are easily obtained.

Besides those already mentioned, the following places, situated on the coast between Métis-sur-Mer and Sainte-Anne-des-Monts, are very interesting tourist centers: Sandy Bay, Saint-Ulric, Petit-Métis, Méchins and Capucins.

There are many fishing centers and agricultural parishes scattered along this part of the coast where nearly all the inhabitants are French-Canadians.

The principal places of this coastal region are the following:

#### SAINT-JOACHIM-DE-TOURELLE

Saint-Joachim-de-Tourelle owes its name to a turret-shaped rock on the beach opposite the village.

#### SAINT-MAXIME-DE-MONT-LOUIS

Saint-Maxime-de-Mont-Louis is an interesting fishing center.

#### MADELEINE

Madeleine is another important center where the fishing industry, mixed farming, and lumbering operations give employment to the inhabitants.

The product of a mill located seven miles from the village is transported by means of a railway line which operates along the bank of the Madeleine River.

#### GRANDE-VALLÉE AND CLORIDORME

Grande-Vallée and Cloridorme are fishing centers.

Cloridorme is of particular interest being one of the most picturesque villages on the Gaspé coast.

#### ÉCHOURIE, RIVIÈRE-AU-RENARD AND ANSE-AU-GRIFFON

Echourie, Rivière-au-Renard, and Anse-au-Griffon are fishing and agricultural centers where lumbering operations also are carried on successfully.

#### CAP-DES-ROSIERS

Situated at the extremity of the Gaspé Peninsula, Cap-des-Rosiers is a prosperous agricultural center and important fishing station.

Because of its exceptional geographical position, this interesting parish will surely become within the next few years a far-famed tourist center.



A TYPICAL COD-DRYING ESTABLISHMENT

## CAP-AUX-OS

Cap-aux-Os is a small agricultural center situated on the shore of Gaspé Bay, opposite Douglastown.

## SAINT-MAJORIQUE

Situated at the extremity of Gaspé Bay, Saint-Majorique is a prosperous agricultural center where many saw-mills give employment to part of the population.

## GASPÉ

Gaspé, situated at the mouth of the York River, is the most important center on the Peninsula from historical, commercial, and tourist points of view. Below is a brief description of the port of Gaspé by Mgr F. X. Ross, Bishop of Gaspé: "From the time of Cartier, who found safe refuge in this harbor-unique in America — numerous travellers, in every period of our history, have remarked upon its exceptional advantages. . . . . On different occasions, isolated attempts have been made to draw public attention to a fact of greatest interest to the country, the fact that Gaspé affords Canada a natural harbor, the nearest in America to Europe. . . . . In winter, the distance from Liverpool to Quebec, via Halifax and the Canadian National, could be shortened 533 miles by a line of ships which would connect at Gaspé with a railway line running through the interior of the Peninsula. The distance between Liverpool and Montreal, via Halifax and the Canadian National, could thus be shortened by 456 miles. We have already stated that this is a national question."

Gaspé is to-day the favored rendezvous of thousands of tourists each year, and rivals any of the popular summer resorts in America, both in scenery and in healthful outdoor recreations.

In the forests surrounding Gaspé, the sportsman will find both big and small game.

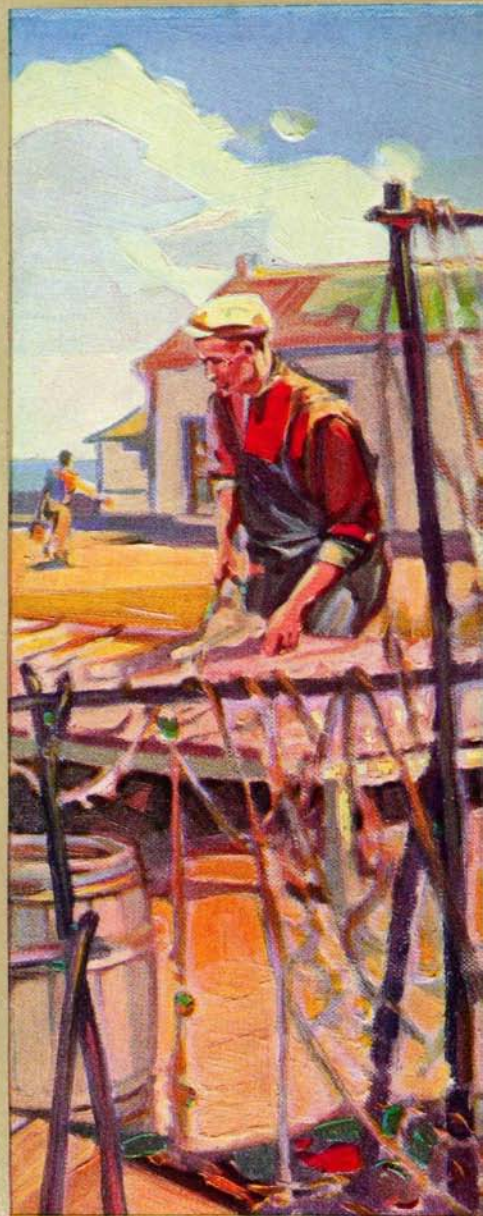
## DOUGLASTOWN

Douglastown, situated on the south shore of Gaspé Bay, has the appearance of a small town with its well laid out streets, its attractive houses, and its beautiful church erected on top of a small hill.

## SAINT-GEORGES-DE-LA-MALBAIE, ST-PIERRE-DE-LA-MALBAIE

Saint-Georges and Saint-Pierre, separated by Mount Saint-Pierre, are important agricultural centers.

These two centers, because of their picturesque location, are becoming more and more popular as summer resorts.



## PERCÉ

Percé, that scenic marvel with its Giant Rock, is situated at the extremity of the Gaspé Peninsula, five miles east of the Perron Boulevard.

This place of wondrous beauty, where the tourist's dreams come true, is probably the most enchanting summer resort in all America.

Below is the charming description of Percé given by Father Ferland:

"Built on two coves, separated by Mount Joli, the village of Percé is picturesque and without doubt incomparable in beauty. . . . .

"Nearer, we observe the Island of Percé with its two arches, which create the illusion of an immense bridge built by a race of giants to join the Bonaventure Island and Mount Joli.

"The summit of this mountain (Mount Joli) has an elevation of 1200 feet above sea level and can be seen from a distance of 40 miles, on a clear day.

"From this elevated point, one can see the houses of village of Percé, Mount St. Ann, the pierced rock from which the village takes its name, and, offshore, Bonaventure Island."

## ANSE-DU-CAP

Anse-du-Cap is another prosperous agricultural parish, where many visitors spend their holidays each year.

## GRANDE-RIVIÈRE

Situated at the mouth of the Grande-Rivière, this parish includes part of the Seigniory of Grande-Rivière which was granted to Pierre Cochin in the year 1697.

Grande-Rivière is to-day a well developed agricultural parish and important fishing center.

## SAINTE-ADÉLAÏDE-DE-PABOS

Pabos, originally a fishing station, is to-day an exclusively agricultural parish. Lumbering operations also afford employment to part of the population.

## CHANDLER

Chandler, so named in honor of the founder of the local pulp mill, is included in the Seigniory of Pabos. This village is essentially an industrial center, where a pulp mill affords employment to about 600 workmen.

The Pabos River, near Chandler, is famous for salmon—and trout—fishing.

Chandler offers hotel—boarding house—and garage—accommodations.

## NEWPORT

Newport, the last municipality of the County of Gaspé, is an important fishing station and parish where lumbering operations are carried on with success. Lobster,—cod,—salmon—and mackerel—fishing is probably the most valuable industry of this interesting municipality.

## ANSE-AUX-GASCONS

Anse-aux-Gascons is essentially a fishing station. The natural harbour greatly facilitates fishing operations.

## PORT-DANIEL

Port-Daniel, situated at the mouth of Port-Daniel River, is one of the most important fishing centers of the whole Peninsula where the Provincial Government maintains an important hatchery.

Within the limits of this interesting municipality, a tunnel 800 feet long has been bored through an immense mountain of limestone, on the line of the Atlantic, Quebec, and Western Railway.

## SAINT-GODEFROI

Saint-Godefroi is an agricultural parish, situated near the Shigawake River, where fishing and lumbering operations are also carried on.

## PASPÉBIAC

Paspébiac, one of the oldest municipalities in the County of Bonaventure, is a prosperous commercial center, where mixed farming, dairying, cod fishing, and lumbering operations are simultaneously carried on with success.

At Paspébiac, there are important sawmills and large fish-curing establishments.

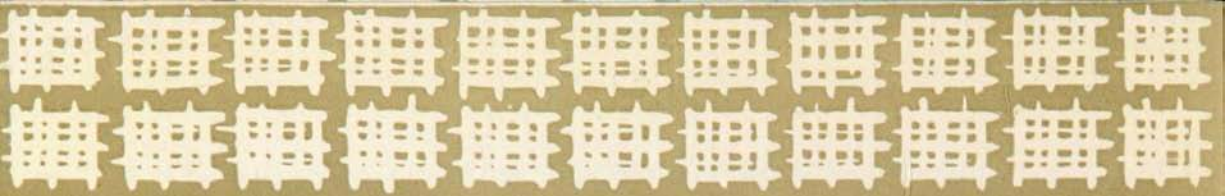
The port of Paspébiac affords exceptional facilities, being a perfectly sheltered harbour.

Paspébiac is now a widely known summer resort.

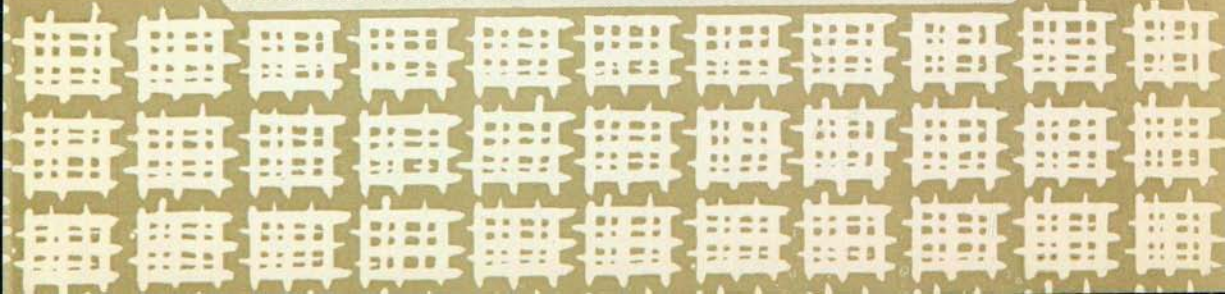
## NEW CARLISLE

New Carlisle, an important commercial center, is the county seat of Bonaventure.

It is also the terminus of the Quebec Oriental Railway connecting Matapédia with New Carlisle, and the Atlantic, Quebec and Western Railway which connects New Carlisle with Gaspé.



GASPÉ LAKES AND RIVERS—THE FISHERMAN'S PARADISE



The village, with its magnificent view of the Baie des Chaleurs, is one of the most picturesque summer resorts of the Province of Quebec.

Besides its beautiful sandy beach, which is a great attraction for tourists, New Carlisle and its vicinity abound in a variety of interests for the summer visitor.

The beautiful lake district of New Carlisle, easily accessible by means of a good road, is one of the most delightful camping-grounds in the Gaspé Peninsula.

Trout-fishing, with its great charms; canoeing, another delightful and healthful diversion; boating on the bay; deep-sea fishing; golf and tennis, which mean much to lovers of active sport; motor trips and picnics to various points along the coast; and big game hunting may be enjoyed by summer visitors.

At New Carlisle, the tourist will find good hotel—and boarding house—accommodation.

#### SAINT-BONAVENTURE, SAINT-SIMÉON AND SAINT-CHARLES-DE-CAPLAN

Saint-Bonaventure, Saint-Siméon, and Saint-Charles-de-Caplan are prosperous agricultural parishes where fish and game abound.

#### NEW RICHMOND

Situated at the mouth of the Petite-Cascapédia River, New Richmond is one of the most important municipalities on the Gaspé Peninsula.

Mixed farming, dairying, and lumbering operations hold an important place in the economic life of this community.

New Richmond is a beautiful summer resort where sports peculiar to seaside resorts may be enjoyed.

#### MARIA

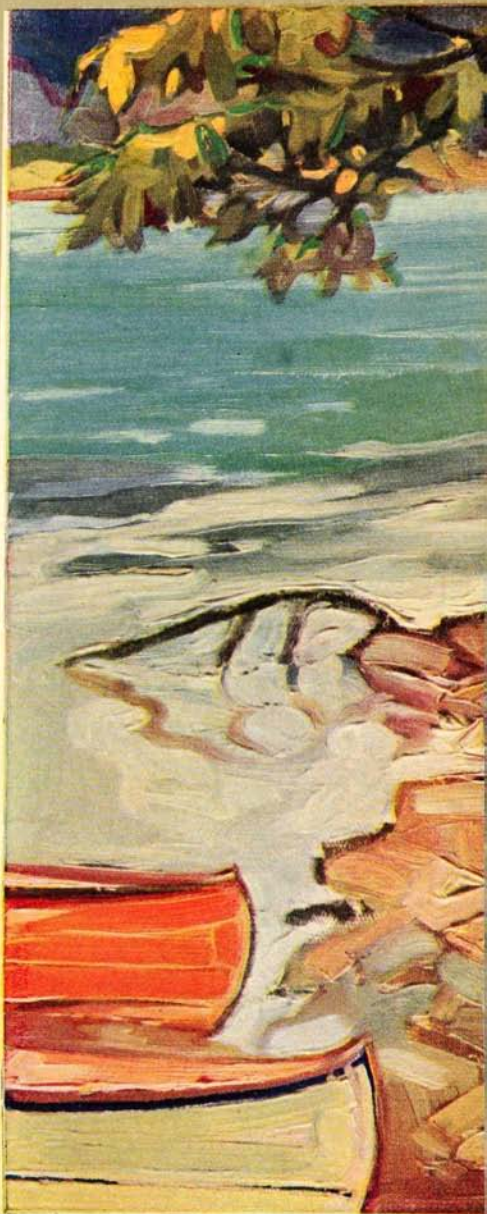
Maria is an interesting center where mixed farming and lobster-fishing are the chief industries.

Owing to its situation on the shore of the magnificent Baie des Chaleurs, Maria affords excellent opportunities for bathing and is to-day a highly appreciated summer resort, far from the restrictions of crowded cities.

#### CARLETON

Carleton was so named in honour of Sir Guy Carleton, the third Governor of Canada, 1766-1778, under the English régime.

Carleton, founded by a number of exiled Acadians, in 1756 under the name Tracadigèche is situated on the shore of Baie des Chaleurs at the foot of Mount Carleton, whose altitude is eighteen hundred feet (1800').



This picturesque place, whose sandy beach is probably the finest for bathing on the coast of Gaspé Peninsula, is a favorite rendezvous for tourists.

Nearly every kind of out-door recreation is featured on the programme of holiday activities at Carleton.

At Carleton, the visitor is assured of good hotel—and boarding house—accommodation.

#### SAINT-OMER, NOUVELLE, ESCUMINAC AND MANN

Saint-Omer, Nouvelle, Escuminac and Mann are prosperous agricultural centers. Lumbering and fishing operations are also carried on with success.

#### RISTIGOUCHE

Ristigouche, which is situated at the mouth of the Ristigouche River, is the principal reserve of the Micmac tribe of Indians who lived within the boundaries of this district long before the Europeans came to this continent.

In this municipality there are important sawmills and other small industrial establishments.

The Indians at Ristigouche number three hundred.

#### MATAPÉDIA

Matapédia, situated at the mouth of the Ristigouche and Matapédia Rivers, is an important railway center on the Canadian National Railway and terminus of the Quebec Oriental Railway.

The Matapédia and Ristigouche Rivers, renowned for their magnificent scenery and their picturesque rapids, are two of the finest salmon rivers in the world. Salmon of astonishing size lurk in the shaded pools of these beautiful rivers.

Matapédia can probably boast of having the most important salmon-fishing club in the Dominion of Canada.

At Matapédia there is a splendid hotel of fifty well-lighted rooms always pleasing to the guest.

From Matapédia to Sainte-Flavie, the Perron Boulevard runs through the picturesque Matapédia Valley which covers an area of about 1500 square miles.

To-day seven prosperous parishes have been settled and are fully organized in this splendid region which sixty years ago was but a vast solitude.

The beautiful Matapédia Valley is a paradise for the artist, the tourist, the angler and the hunter.

Apart from its scenic beauty, the beautiful Matapédia Valley, because of its splendid highway, is one of the most delightful camping-grounds to be found anywhere.

The winding rivers of the Matapédia Valley abound in salmon and trout and are a never-ending source of delight to the ardent angler.

The Matapédia Valley is steadily becoming a veritable sportman's paradise where moose, deer, and bear abound.

From Matapédia, the Boulevard runs through the following parishes:

#### SAINTE-FLORENCE

Sainte-Florence, which dates from 1909, is to-day a prosperous agricultural parish.

Its situation on the bank of the beautiful Matapédia River makes it one of the loveliest spots along the Perron Boulevard.

#### CAUSAPSCAL

Causapschal, at the mouth of the Causapschal River, is one of the most picturesque localities in the beautiful Matapédia Valley.

Its indian name "Causapschal", meaning "swift current", is particularly appropriate, aptly signalizing the impetuous flow of the beautiful Causapschal River.

#### LAC-AU-SAUMON

Lac-au-Saumon, situated on the shore of the lake of the same name, owes its prosperity to mixed farming, dairying and lumbering.

At Lac-au-Saumon, three important sawmills are operated with success and afford employment to many workmen.

#### AMQUI

Amqui, situated on the bank of the Matapédia River, at the mouth of the Amqui River, is one of the most flourishing parishes of the Matapédia Valley.

The land, though hilly, is very productive and well suited to mixed farming and dairying. Each year great quantities of timber are drawn from the watershed of the Amqui River and supply many important sawmills operated at Amqui.

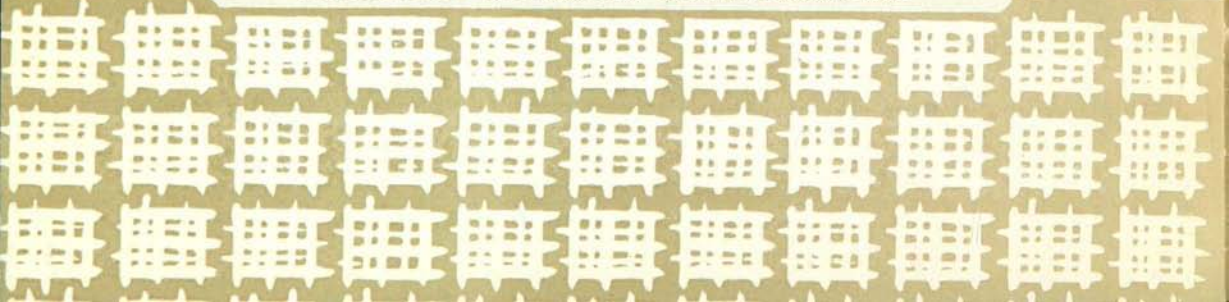
#### VAL-BRILLANT

Val-Brillant, situated on the west shore of the Matapédia Lake, is the most renowned center of the Matapédia Valley



AC

MOONLIGHT ON LAC DE L'ANSE PLEUREUSE



This picturesque village, because of its situation, is a delightful summer resort whose growing popularity is clearly merited.

The surrounding forests, within a few miles of the village, abound in big game.

The Matapédia Lake and the rivers of this region are famed for trout-fishing.

At Val-Brillant, the tourist is assured of modern hotel—and boarding house—accommodation.

#### SAYABEC

Sayabec, situated on the banks of Sayabec River a short distance from the Matapédia Lake, is a prosperous agricultural parish.

From tourist point of view, Sayabec is a very interesting center where modern hotel,—boarding house—and garage—accommodation may be obtained.

#### SAINT-MOÏSE

Saint-Moïse, situated on the watershed of the Gaspé Peninsula, is above all a lumbering center.

The surrounding district is well wooded and renowned for its hunting and fishing facilities.

The church of Saint-Moïse is a beautiful temple that is worth visiting.

Saint-Moïse is the least remote parish of the Gaspé Peninsula.

In order to complete the long circuit of the Perron Boulevard the tourist must travel through Sainte-Angèle-de-Mérici, Saint-Joseph-de-Lepage, and Mont-Joli, which is situated in the County of Rimouski.

#### SAINTE-ANGÈLE-DE-MÉRICI

Sainte-Angèle-de-Mérici is a picturesque parish situated on the banks of the Mitis River.

This is a splendid agricultural parish where almost all crops can be cultivated with success.

The prosperity of the hard-working population is due to mixed farming, market gardening, dairying and cattle-breeding.

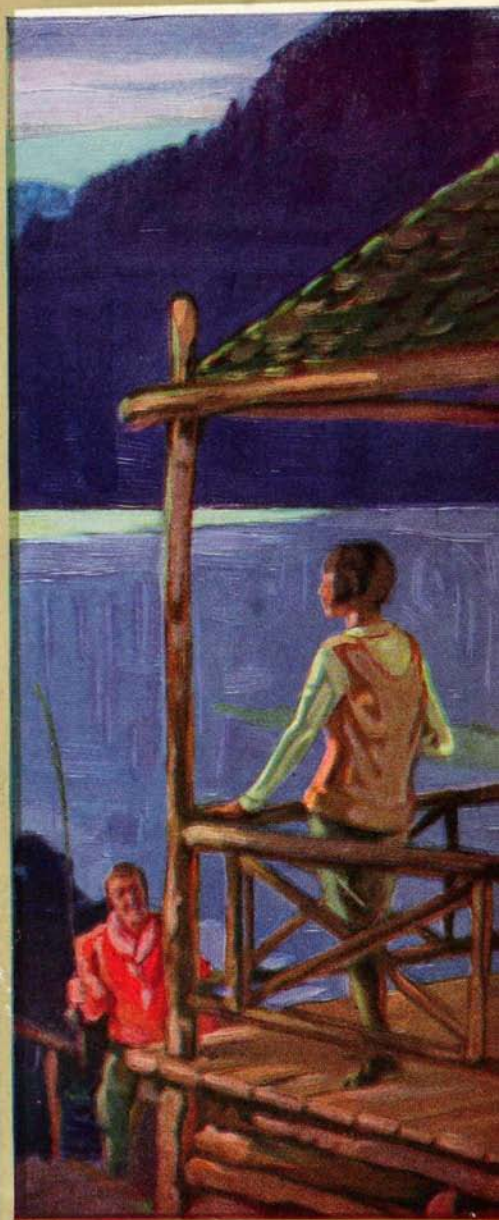
Lumbering also supplies many important saw-mills.

#### SAINT-JOSEPH-DE-LEPAGE

Saint-Joseph-de-Lepage is essentially an agricultural parish where mixed farming is the chief occupation of the inhabitants.

#### MONT-JOLI

Mont-Joli is an important station on the Canadian National Railway and is the terminus of the Canada and Gulf Terminal Railway which connects Mont-Joli with Matane.



This picturesque village owes its name to the hill, called Mont-Joli, on which it is built.

The beautiful church being built on a rock which resembles that of Lourdes, the famous pilgrimage center in France, this interesting parish, when instituted canonically, was placed under the patronage of Notre-Dame-de-Lourdes.

At Mont-Joli, hotel—and boarding house—accommodation may be obtained.

From Mont-Joli to Sainte-Flavie, the starting point of the Perron Boulevard, the distance is 2.68 miles.

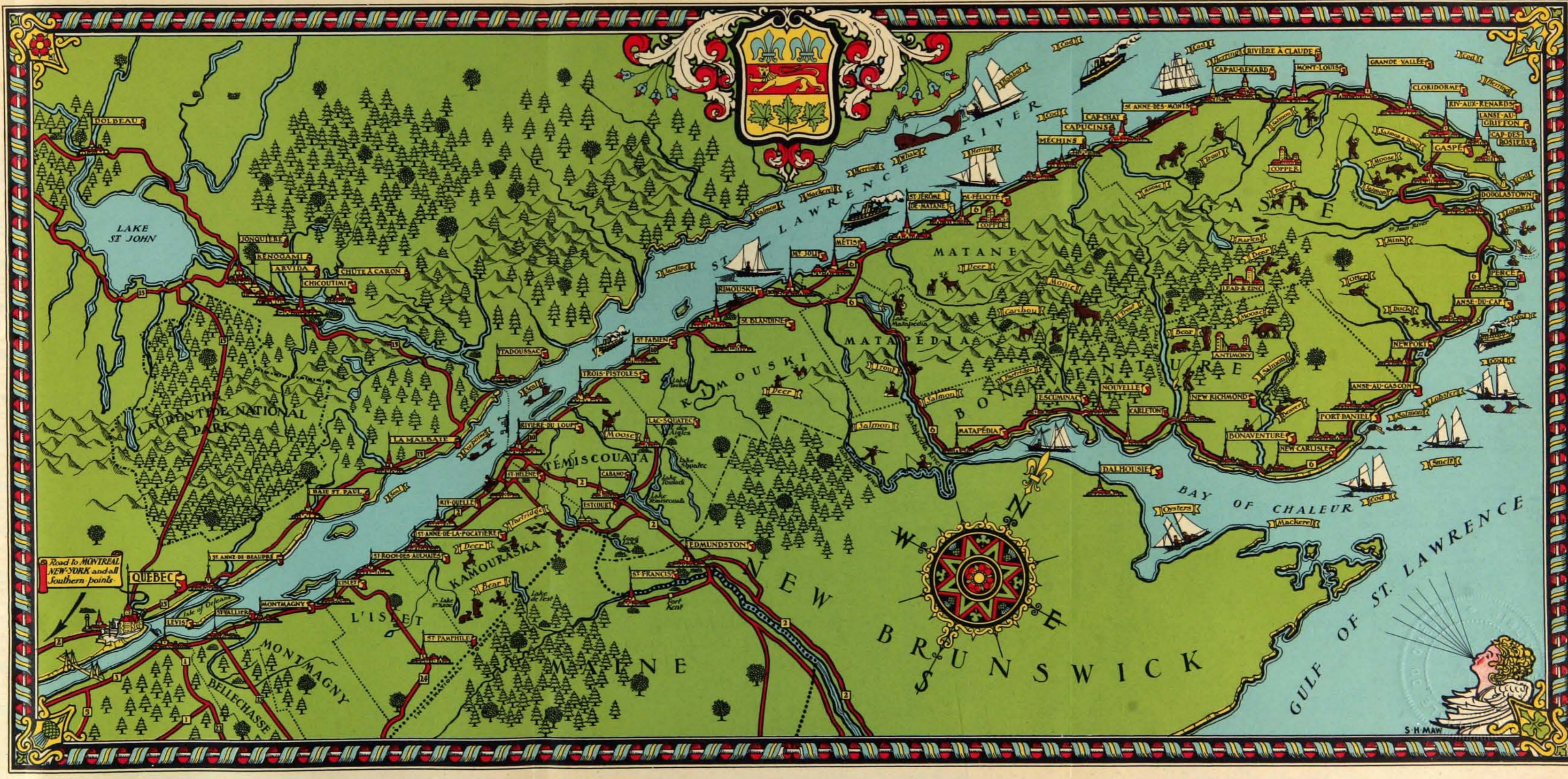
From Sainte-Flavie, the tourist may journey to Quebec by travelling over the Rivière-du-Loup—Sainte-Flavie Highway, No 10, and the Lévis—Fort Covington Highway, No. 3. But preferably he will travel along the south shore of the St. Lawrence as far as Rivière-du-Loup and ferry across to Tadoussac, on the north shore. A regular daily service is furnished by a ferry-boat with capacity for fifty automobiles.

From Tadoussac, the tourist will travel along Highway No. 15 “Quebec-Chicoutimi-Tour du Lac Saint-Jean-Québec”, which skirts the St. Lawrence between Saint-Siméon and Québec.

A reference to the Highway and Tourist Map of the Province of Québec, published under the direction of the Minister of Roads, will greatly help the tourist in planning his itinerary.

---

THE PRESENT BOOKLET HAS BEEN PUBLISHED UNDER THE DIRECTION OF  
HON. J. E. PERRAULT, MINISTER OF HIGHWAYS AND MINES FOR THE  
PROVINCE OF QUEBEC.



S.H. MAW

LAKE ST JOHN

ST. LAWRENCE RIVER

BAY OF CHALEUR

GULF OF ST. LAWRENCE

Road to MONTREAL  
NEW-YORK and all  
Southern points

LAURENTIDE NATIONAL  
PARK

NEW  
BRUNSWICK

QUEBEC

TEMISCOUATA

BONAVENTURE

PORT DANIEL

LEVIS

ST. ANNE DE BEAUPRE

ST. ROCHES AULNAIS

ST. FRANCIS

EDMUNDSTON

ST. JEROME DE MATHANE

ST. ANNE DES MONTS

ST. JEAN DE MATHANE

ST. ANNE DE LA POCATIÈRE

ST. PAMPHILE

LA MALBAIE

LA MALBAIE

LA MALBAIE

LA MALBAIE

LA MALBAIE

LA MALBAIE

LA MALBAIE

LA MALBAIE

LA MALBAIE

LA MALBAIE

LA MALBAIE

LA MALBAIE

LA MALBAIE

LA MALBAIE

LA MALBAIE

LA MALBAIE

LA MALBAIE

LA MALBAIE

LA MALBAIE

LA MALBAIE

LA MALBAIE

LA MALBAIE

LA MALBAIE

LA MALBAIE

LA MALBAIE

LA MALBAIE

LA MALBAIE

LA MALBAIE

LA MALBAIE

LA MALBAIE

LA MALBAIE

LA MALBAIE

LA MALBAIE

LA MALBAIE

LA MALBAIE

LA MALBAIE

LA MALBAIE

LA MALBAIE

LA MALBAIE

LA MALBAIE

LA MALBAIE

LA MALBAIE

LA MALBAIE

LA MALBAIE

LA MALBAIE

LA MALBAIE

LA MALBAIE

LA MALBAIE

LA MALBAIE

LA MALBAIE

LA MALBAIE

LA MALBAIE

LA MALBAIE

LA MALBAIE

LA MALBAIE

LA MALBAIE

LA MALBAIE

LA MALBAIE

LA MALBAIE

LA MALBAIE

LA MALBAIE

LA MALBAIE

LA MALBAIE

LA MALBAIE

LA MALBAIE

LA MALBAIE

LA MALBAIE

LA MALBAIE

LA MALBAIE

LA MALBAIE

LA MALBAIE

LA MALBAIE

LA MALBAIE

LA MALBAIE

LA MALBAIE

LA MALBAIE

LA MALBAIE

LA MALBAIE

LA MALBAIE

LA MALBAIE

LA MALBAIE

LA MALBAIE

LA MALBAIE

LA MALBAIE

LA MALBAIE

LA MALBAIE

LA MALBAIE

LA MALBAIE

LA MALBAIE

LA MALBAIE

LA MALBAIE

LA MALBAIE

LA MALBAIE

LA MALBAIE

LA MALBAIE

LA MALBAIE

LA MALBAIE

LA MALBAIE

LA MALBAIE

LA MALBAIE

LA MALBAIE

LA MALBAIE

LA MALBAIE

LA MALBAIE

LA MALBAIE

LA MALBAIE

LA MALBAIE

LA MALBAIE

LA MALBAIE

LA MALBAIE

LA MALBAIE

LA MALBAIE

LA MALBAIE

LA MALBAIE

LA MALBAIE

LA MALBAIE

LA MALBAIE

LA MALBAIE

LA MALBAIE

LA MALBAIE

LA MALBAIE

LA MALBAIE

LA MALBAIE

LA MALBAIE

LA MALBAIE

LA MALBAIE

LA MALBAIE

LA MALBAIE

LA MALBAIE

LA MALBAIE

LA MALBAIE

LA MALBAIE

LA MALBAIE

LA MALBAIE

LA MALBAIE

LA MALBAIE

LA MALBAIE

LA MALBAIE

LA MALBAIE

LA MALBAIE

LA MALBAIE

LA MALBAIE

LA MALBAIE

LA MALBAIE

LA MALBAIE

LA MALBAIE

LA MALBAIE

LA MALBAIE

LA MALBAIE

LA MALBAIE

LA MALBAIE

LA MALBAIE

LA MALBAIE

LA MALBAIE

LA MALBAIE

LA MALBAIE

LA MALBAIE

LA MALBAIE

LA MALBAIE

LA MALBAIE

LA MALBAIE

LA MALBAIE

LA MALBAIE

LA MALBAIE

LA MALBAIE

LA MALBAIE

LA MALBAIE

LA MALBAIE

LA MALBAIE

LA MALBAIE

LA MALBAIE

LA MALBAIE

LA MALBAIE

LA MALBAIE

LA MALBAIE

LA MALBAIE

LA MALBAIE

LA MALBAIE

LA MALBAIE

LA MALBAIE

LA MALBAIE

LA MALBAIE

LA MALBAIE

LA MALBAIE

LA MALBAIE

LA MALBAIE

LA MALBAIE

LA MALBAIE

LA MALBAIE

LA MALBAIE

LA MALBAIE

LA MALBAIE

LA MALBAIE

LA MALBAIE

LA MALBAIE

LA MALBAIE

LA MALBAIE

LA MALBAIE

LA MALBAIE

LA MALBAIE

LA MALBAIE

LA MALBAIE

LA MALBAIE

LA MALBAIE

LA MALBAIE

LA MALBAIE

LA MALBAIE

LA MALBAIE

LA MALBAIE

LA MALBAIE

LA MALBAIE

LA MALBAIE

LA MALBAIE

LA MALBAIE

LA MALBAIE

LA MALBAIE

LA MALBAIE

LA MALBAIE

LA MALBAIE

LA MALBAIE

LA MALBAIE

LA MALBAIE

LA MALBAIE

LA MALBAIE

LA MALBAIE

LA MALBAIE

LA MALBAIE

LA MALBAIE

LA MALBAIE

LA MALBAIE

LA MALBAIE

LA MALBAIE

LA MALBAIE

LA MALBAIE

LA MALBAIE

LA MALBAIE

LA MALBAIE

LA MALBAIE

LA MALBAIE

LA MALBAIE

LA MALBAIE

LA MALBAIE

LA MALBAIE

LA MALBAIE

LA MALBAIE

LA MALBAIE

LA MALBAIE

LA MALBAIE

LA MALBAIE

LA MALBAIE

LA MALBAIE

LA MALBAIE

LA MALBAIE

LA MALBAIE

LA MALBAIE

LA MALBAIE

LA MALBAIE

LA MALBAIE

LA MALBAIE

LA MALBAIE

LA MALBAIE

LA MALBAIE

LA MALBAIE

LA MALBAIE

LA MALBAIE

LA MALBAIE

LA MALBAIE

LA MALBAIE

LA MALBAIE

LA MALBAIE

LA MALBAIE

LA MALBAIE

LA MALBAIE

LA MALBAIE

LA MALBAIE

LA MALBAIE

LA MALBAIE

LA MALBAIE

LA MALBAIE

LA MALBAIE

LA MALBAIE

LA MALBAIE

LA MALBAIE

LA MALBAIE

LA MALBAIE

LA MALBAIE

LA MALBAIE

LA MALBAIE

LA MALBAIE

LA MALBAIE

**LISTE**  
DES  
**GRANDES ROUTES**  
DE QUÉBEC

**LIST**  
OF  
**MAIN HIGHWAYS**  
OF QUEBEC

No.	ROUTE—HIGHWAY	Longueur en milles
		Length in miles
1	Montréal-Sherbrooke-Thetford Mines-Lévis	235.86
2	Edmundston-Rivière-du-Loup-Québec-Montréal-Toronto	424.53
3	Lévis-Fort Covington	265.11
4	Montréal-Malone	70.67
5	Lévis-Sherbrooke (via Richmond)	139.62
6	Boulevard Perron (tour de la Gaspésie)	533.20
7	Montréal-St. Albans	55.50
8	Montréal-Hull-Aylmer-Pembroke	230.22
9	Edouard VII	43.43
10	Rivière-du-Loup-Ste-Flavie	85.10
11	Montréal-Mont-Laurier-Maniwaki-Hull	289.29
12	Rougemont-St-Hyacinthe-Drummondville-Trois-Rivières	93.05
13	Sherbrooke-Derby Line	33.87
14	Montréal-Rouse's Point (via St-Jean)	47.71
15	Québec-Chicoutimi-tour du lac St-Jean-Québec	524.86
16	Richmond-Yamaska	50.78
17	Montréal-Ottawa (via Pointe Fortune)	55.30
18	Montréal-Terrebonne-St-Donat	72.58
19	Trois-Rivières-La Tuque	114.24
20	Victoriaville-Drummondville	33.53
21	Sorel-Iberville-St-Jean	55.46
22	Sherbrooke-Norton Mills	30.89
23	Lévis-Jackman	90.21
24	St-Jean-Port-Joli-St-Pamphile-St-Camille	79.93
25	St-Vallier-St-Camille-St-Georges-Lac-Megantic	135.61
26	Waterloo-Rouse's Point (via Knowlton)	67.30
27	Birchton-Beecher Falls	34.31
28	Lévis-Sherbrooke (via Beauceville)	145.95
29	Lachute-Charlemagne (via Oka)	62.02
30	Lachute-Ste-Agathe	42.65
31	Lachute-St-Jovite	49.63
32	Montréal-St-Hyacinthe-Richmond	97.84
33	L'Assomption-Rawdon	28.42
34	Trois-Rivières-Woburn	137.46
35	Buckingham-Mont-Laurier	98.10
36	Beauharnois-St-Jean	50.47
37	Tour de l'Île de Montréal	75.76
38	Tour de l'Île-Jésus	44.94
39	Waterloo-Newport	32.42
40	Marieville-Cowansville	28.69
41	Berthier-Joliette-Lachute	71.10
42	Berthier-Joliette-St-Côme (via St-Ambroise)	51.28
43	Berthier-St-Michel-des-Saints	67.39
44	Louiseville-St-Alexis	24.66
45	Senneterre-La Reine	136.93
46	Chemin Perrault (Macamic-Rouyn-Témiscamingue)	178.10
47	St-Roch-Chambly-St-Jean	46.70
48	L'Assomption-Joliette	18.18
49	Black Lake-St-Pierre-les-Becquets	60.90
50	Magog-Coaticook	24.55

# WRITE THE PROVINCIAL TOURIST BUREAU

Gaspé Peninsula is but one of the many districts in the Province of Quebec offering unusual attractions for the tourist.

Historic sections such as Montreal, Quebec, Côte de Beaupré, the Isle of Orleans, the Chaudière River Valley and the Richelieu River Valley; scenic districts such as the Ottawa River Valley, the Laurentian Mountains and the Charlevoix County; agricultural, industrial and scenic sections such as the Eastern Townships, the Counties of Lake St. Jean and Chicoutimi are described in other publications issued by the Provincial Tourist Bureau.

The publications available at present and which are sent free on request are as follows:

THE OLD WORLD AT YOUR DOOR, a twelve-page illustrated booklet.

4, 5 and 6 DAYS IN QUEBEC, a 64-page illustrated booklet, describing tours in various sections of Quebec.

QUEBEC HIGHWAY AND TOURIST MAP.

OFFICIAL ROAD BULLETIN, issued semi-monthly.

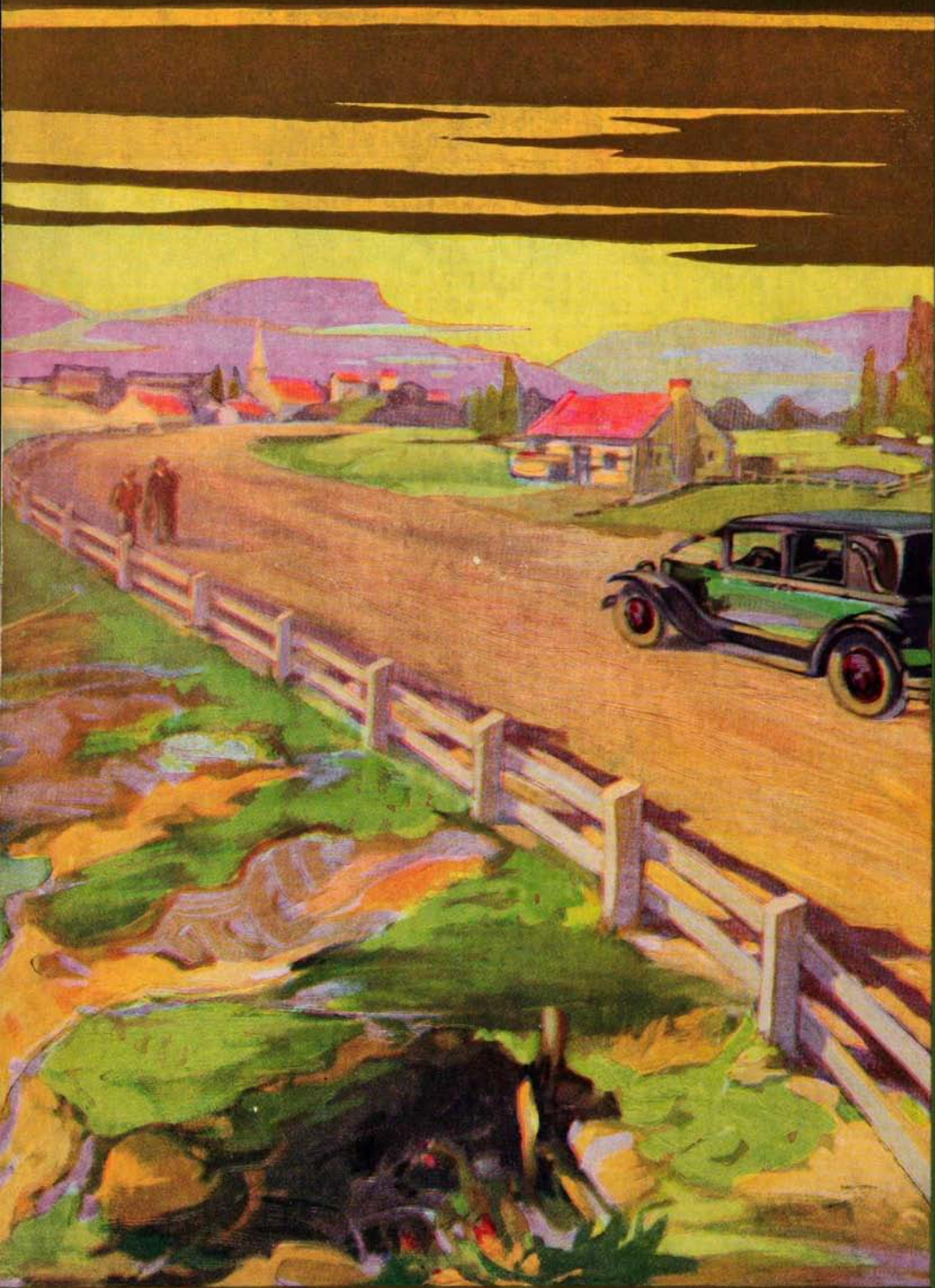
*Ask your copy to the*

**Provincial Tourist Bureau**

**HIGHWAYS DEPARTMENT**

**Quebec, Canada**





BNQ



000 501 721

~~165435~~