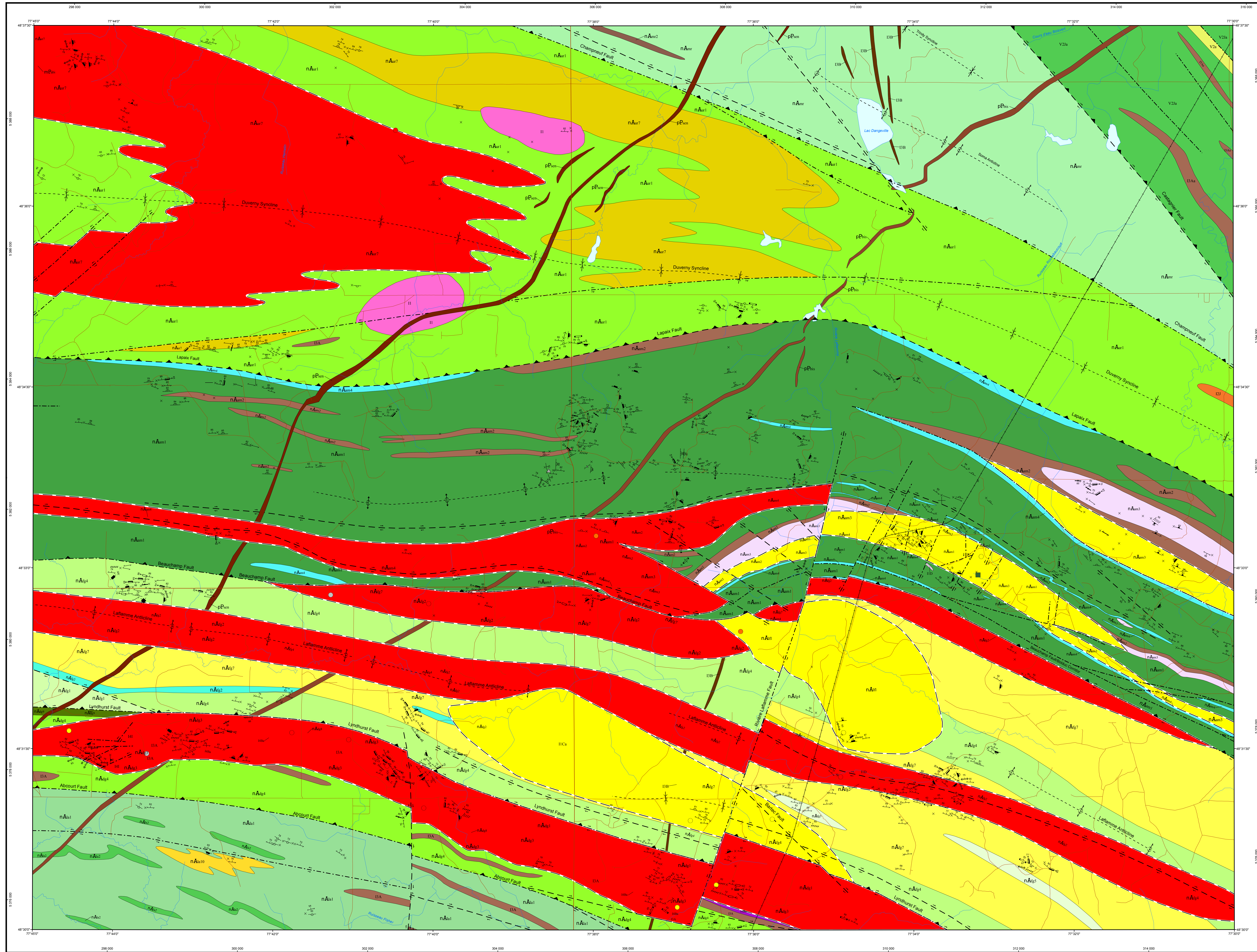


Geology of the Amos area, Abitibi Subprovince, Abitibi-Témiscamingue Region, Quebec, Canada



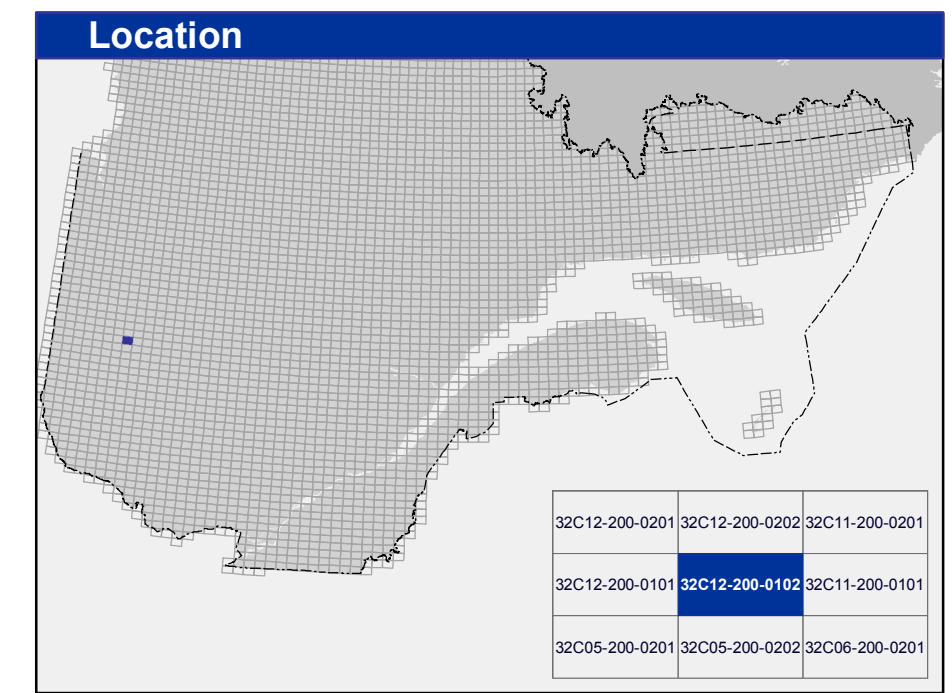
- STRATIGRAPHIC LEGEND**
- SUPERIOR PROVINCE**
MESOPROTEROZOIC
 Abitibi Dikes (1140-6 Ma; Krogh et al., 1987)
 Dababase: olivine gabbro and gabbroite
- PALEOPROTEROZOIC**
 Biscuiting Dikes (2166.7 ± 1.4 Ma; Buchan et al., 1993)
 Dababase: gabbro and quartz gabbro
 Serranville Dikes (2214 ± 12 Ma; Buchan et al., 1993; 2215 ± 10 Ma; Moresse in Buchan et al., 1996; 2211 ± 14 Ma; Davis et al., 2018)
 Dababase: gabbro, gabbroite and quartz gabbro
- ABITIBI SUBPROVINCE**
NEOARCHAIC
 Lafamme Pluton
 nAur1: Hornblende monzonite, monzonite, quartz monzonite and granodiorite
 Kinoyvika Group (2720-2716 Ma; Pilon, 2008)
 Duvernay Formation (2720-2718 Ma; Pilon, 2008)
 nAur2: Phynite-pyrite-graphitic claystone, siltstone and cherty tuff
 nAur3: Semi-massive sulphides, cherty exhalite and felsic volcanoclastic rocks
 nAur4: Andesite and intermediate to mafic volcanoclastic rocks
 nAur5: Felsic volcanic and volcanoclastic rocks
 nAur6: Basalt, andesitic basalt and mafic volcanoclastic rocks
- Figinary Group**
 nAur7: Dacite
 nAur8: Rhyolite, dacite and felsic tuff
 nAur9: Intermediate to mafic volcanic rocks and intermediate tuff
 nAur10: Pliogabbro porphyritic andesite
 nAur11: Pyrite-graphite tuff
 nAur12: Andesite, basalt, gabbro and felsic to intermediate volcanoclastic rocks
- Lafamme Formation (2727-2722 Ma; Labbé, 1998)**
 nAur13: Dacite, rhyolite and rhyolite
 nAur14: Basalt, magnétite-chlorite-epidote basaltic tuff, gabbro
 nAur15: Chlorite-epidote massive and pillow basalt
- Amos Group**
 nAur16: Layered graphitic, pyritic and cherty felsic to intermediate volcanoclastic rocks
 nAur17: Pyroxenite, peridotite, dunite and serpentinite sills
 nAur18: Gabbro sill
 nAur19: Tholeiitic basalt
 nAur20: Dacite, rhyolite and rhyolite
 nAur21: Basalt, magnétite-chlorite-epidote basaltic tuff, gabbro
 nAur22: Chlorite-epidote massive and pillow basalt
- La Morandière Group**
 nAur23: Tholeiitic basalt
 nAur24: Gabbro

- LITHOLOGICAL LEGEND**
- PROTEROZOIC**
NEOARCHAIC
 nAur1: Quartzfeldspathic porphyry
 nAur2: Canadorite and tonalite
 nAur3: Porphyritic tonalite
 nAur4: Dacite
 nAur5: Gabbro sill
 nAur6: Gabbro sill and magnetic basalt
 nAur7: Pyroxenite and gabbro
 nAur8: Peridotite
 nAur9: Intermediate volcanoclastic rocks, graphitic and pyritic mudstone and siltstone
 nAur10: Andesite and andesitic volcanoclastic rocks, gabbro, graphitic and pyritic mudstone and siltstone

- PROSPECTIVE ZONE FOR MINERAL EXPLORATION**
- Gold
 Zinc
- SHOWING AND DEPOSIT**
- Silver
 Copper
 Gold
 Zinc
 Chrysolite
 Crushed stone

This geological map in PDF format contains layers that group the various elements of the document (geological zones, hydrography, geotopic outcrops, etc.). These layers can be displayed or hidden in the "Layers" section of the "Browse Panel" in Adobe Acrobat Reader.

Symbols and abbreviations used on this map are described in the DV 2014-06 publication of the Ministère de l'Énergie et des Ressources naturelles.



Metadata

Geodetic reference frame: GRS 80 ellipsoid
 Geodetic reference system: NAD 83 compatible with the world geodetic system WGS 84
 Cartographic projection: Universal Transverse Mercator (UTM), zone 18
 Original longitude: 77°37'30"
 Original latitude: 0°

Sources

Data
 Base de données pour l'aménagement du territoire (BDAT 1008)

Organization
 Ministère de l'Énergie et des Ressources naturelles
 Direction générale de Géologie Québec

Realization

Geology:
 Pierre Pilon et Jonathan Maréchal (2019)

References:
 Aramstchey, L., Label D'Azar, S. (1981) - DPV 744
 Bévère, J.-P. (2014) - GM 8524
 Caspeau, Y. (1983) - GM 48707
 Émond, F., J., Sorensen, S. (1982) - GM 12465
 Guay, M. (1988) - GM 57223
 Ivers, L. (1984) - MM 55-24
 Labbé, J.-Y. (1995) - MB 95-24
 Labbé, J.-Y. (1999) - ET 98-04
 M.F.R. (1984) - O2030210
 Côté, M., Béland, G. (1986) - MB 86-21
 Pilon, P., Maréchal, J., Duvet, J. (2019) - BG 2019-06
 Weber, W.W., Lathrop, M. (1994) - RG 109
 Weeks, L.J. (1989) - GGIC - N Series Map 029A

Technical assistance:
 Julie Sauvageau, Kathleen O'Brien

Production:
 Ministère de l'Énergie et des Ressources naturelles
 Direction générale de Géologie Québec

Distribution:
 Ministère de l'Énergie et des Ressources naturelles
 Direction de l'information géologique du Québec

This document has no legal value
 © Gouvernement du Québec, 4^e trimestre de 2020

BG 2020-06-C01

Map of the Bulletin géologique: http://gq.mines.gouv.qc.ca/bulletins/geologiques/amos_en/

To obtain the most recent data for this region, we suggest that you consult the geomatics products of Québec's Geomatics Information System (SIGÉOM).

Bulletin
 géologique

SIGÉOM
 Système d'information
 géomatique du Québec

Énergie et Ressources
 naturelles
 Québec