

PARC NATIONAL DU MONT-SAINT-BRUNO



NEW

COME EXPERIENCE... THE OLD MILL TEA ROOM

Enjoy our tea selection and revel in new flavours.



WATERCRAFT RENTAL AT OLD MILL LAKE (LAC DU MOULIN)

Starting this summer, you will be able to rent watercrafts: canoes or stand-up paddle (SUP) boards. A unique opportunity to explore the lake!



WELCOME

QUÉBEC
NATIONAL PARKS DAY

SEPTEMBER 9,
2017

EXPLORE NATURE AT ITS FINEST

Québec national parks provide a unique opportunity to enjoy nature at its finest.

The entry fee you're required to pay is your contribution to the development and conservation of these territories.

FREE ADMISSION FOR CHILDREN 17 YEARS AND UNDER

Daily entry fee - Adults 18 years and over	\$8.50
Annual Network Card	\$76.50
Annual Park Card	\$42.50

Rates valid until December 31, 2017, taxes included. See complete fee schedule at sepaq.com/parkscard

ANNUAL PARCS QUÉBEC NETWORK CARD

Unlimited access to all of Québec's national parks for 12 months and an array of exclusive benefits:

- ONE FREE NIGHT OF CAMPING on a weekday, in any Sépaq destination (value of free night is for a semi-serviced site)
- BOUTIQUES 15% off regular-priced items* in all Sépaq boutiques
- AQUARIUM DU QUÉBEC 15% off daily admission
- PARC NATIONAL DE MIGUASHA Free admission to exhibits
- ONE DAY PASS for a friend
- CROSS-COUNTRY SKIING 15% off a day ticket
- PARC NATIONAL DU MONT-MÉGANTIC 15% off admission to the ASTROLab

Certain conditions apply.
*Excluding convenience store products and ski products.

Details at sepaq.com/parkscard

CONTEST DESTINATION PARCS NUNAVIK

Between April 1 and September 1, 2017, when you purchase or renew your Annual Network Card, you could win a stay for 2 in a national park of Nunavik.

A \$10,000 VALUE!

Experience the journey of a lifetime. A choice among 3 destinations to explore at parcsnunavik.ca:

- Parc national des Pingualuit
- Parc national Kuururjuaq
- Parc national Tursujuq

Details and contest rules at sepaq.com/contest



THE MUST-DOS

A HILL ON THE PLAIN

The Parc national du Mont-Saint-Bruno is the most extensively visited park in the Parcs Québec network, attracting close to 900,000 nature lovers every year. Surrounded by four municipalities located near Montreal, the park provides a veritable forest islet in the heart of an urban and agricultural area. A highly representative element of the natural region comprising the Monteregian Hills, the park encompasses, among other things, five lakes, an orchard, a historic mill, and dozens of kilometers in trails.

TEA ROOM

The tea room at the Old Mill (Vieux Moulin), located in the heart of the park, invites you to experience a speciality coffee or tea, Viennese pastry, smoothie, gelato, macaroon and fine chocolate tasting adventure in a warm, congenial atmosphere.



FAT-TIRE BICYCLE

Fat-tire bicycles, also known as fat-tire bikes or "fatties", provide traction ideal for snowy surfaces. Try them out on rental. Available at the Discovery and Services Centre in winter.



DISCOVERY ACTIVITIES

The park offers a myriad of discovery activities, both day- and night-time, in all seasons, either accompanied by a park warden and guide or self-guided.



FOR WINTER SPORTS ENTHUSIASTS

In winter, the park offers a 35-km network of mechanically groomed cross-country ski trails, as well as snowshoeing, fat-tire bike and snow-bound hiking trails.



OUTDOOR ACTIVITIES AND HIKING TRAILS

ON FOOT

With its hiking trail network (30 km of planned and managed trails, and 4 km of rustic trails), its mature forests and five lakes, the *Parc national du Mont-Saint-Bruno* has earned an enviable reputation for hiking. Along some of these footpaths, you will find a series of interpretation signs dotting the way, while on other circuits, you can use a brochure or the Park Path Explorer (*Parc Parcours*) to personalize your itinerary.

Ahoy! Families, take the opportunity of your visit in the park to enjoy a picnic break with the children. A playground laid out in the pond area will be great fun for toddlers.

We wish you a pleasant hike!

WATERCRAFT RENTAL AT OLD MILL LAKE (LAC DU MOULIN)

New this year! Set off to explore the lake! In a canoe or on a stand-up paddle (SUP) board, let the charm of Old Mill Lake (*Lac du Moulin*) win you over, and behold it from another viewpoint. This is a unique opportunity to share the experience of the park with family and/or friends. Does paddling give you a bit of a crave? After your trek, come over to taste a coffee or tea at the Old Mill Tea Room.



DISCOVERY	TRAIL	LENGTH	DURATION	LOOP	DIFFICULTY LEVEL	STARTING LOCATION
	Le Saint-Gabriel	1,8 km	45 min	X	B	Discovery and Services Centre
	Le Seigneurial	7 km	1.5 hr	X	B	Discovery and Services Centre
	Les Lacs	8,8 km	2 hr	X	B	Discovery and Services Centre
	Le Montérégien	8,8 km	2 hr	X	I	Discovery and Services Centre
	Le Petit-Duc	1,5 km	20 min	X	B	Discovery and Services Centre
	Le Grand-Duc	3,5 km	1 hr	X	B	Discovery and Services Centre

Mobile Application
 Brochure / Interpretation Sign
 Bicycle
 Hiking
 B - Beginner
 I - Intermediate

PICK YOUR OWN APPLES

The park's orchard offers several varieties of succulent, crunchy apples you can pick yourself! In addition, the outside stand located near the Discovery and Services Centre also sells apples, their derivative products as well as other regional niceties (honey products, maple products, jams, compotes, home-made ketchups, apple pies, etc.).

NEW THIS YEAR

Guided visits of the orchard and scientific animation on Saturdays and Sundays in the fall. Hosted by Institut de recherche et de développement en agroenvironnement.

"The legacy of the brothers of St.Gabriel" booth, every Sunday in the fall.



SCHEDULE AND OPENING HOURS

SERVICE	DATES OPEN	HOURS	DAYS
Discovery and Services Centre (DSC)	April 1 to June 22	9 a.m. to 5 p.m.	7 days/week
	June 23 to September 4	9 a.m. to 5 p.m.	Weekdays
		9 a.m. to 6 p.m.	Weekends + Legal Holidays
	September 5 to October 29	8 a.m. to 5 p.m.	Weekdays
		8 a.m. to 5:30 p.m.	Weekends
	October 30 to December 17	9 a.m. to 4 p.m.	7 days/week
December 18 to March 31	8 a.m. to 4 p.m.	7 days/week	
Apple Orchard	Late August to Mid-October		Check with the Discovery and Services Centre
Tea Room at the Old Mill (Vieux Moulin)	April 1 to June 22	10:30 a.m. to 4 p.m.	Weekends + Legal Holidays
	June 23 to September 4	10:30 a.m. to 5:30 p.m.	Weekends + Legal Holidays
	September 5 to March 31	10:30 a.m. to 4 p.m.	Weekends + Legal Holidays
Boat rental	June 23 to October 9	10:30 a.m. to 5:30 p.m.	Weekends + Legal Holidays
Restaurant*	December 16 to March 4	9:30 a.m. to 4 p.m.	Weekends + Legal Holidays
Cross-country skiing and snowshoeing*	December 1 to March 31 (depending on snow conditions)		Check with the Discovery and Services Centre
Ski and snowshoe rental**	December 19 to March 31 (depending on snow conditions)	8:30 a.m. to 4 p.m.	Check with the Discovery and Services Centre

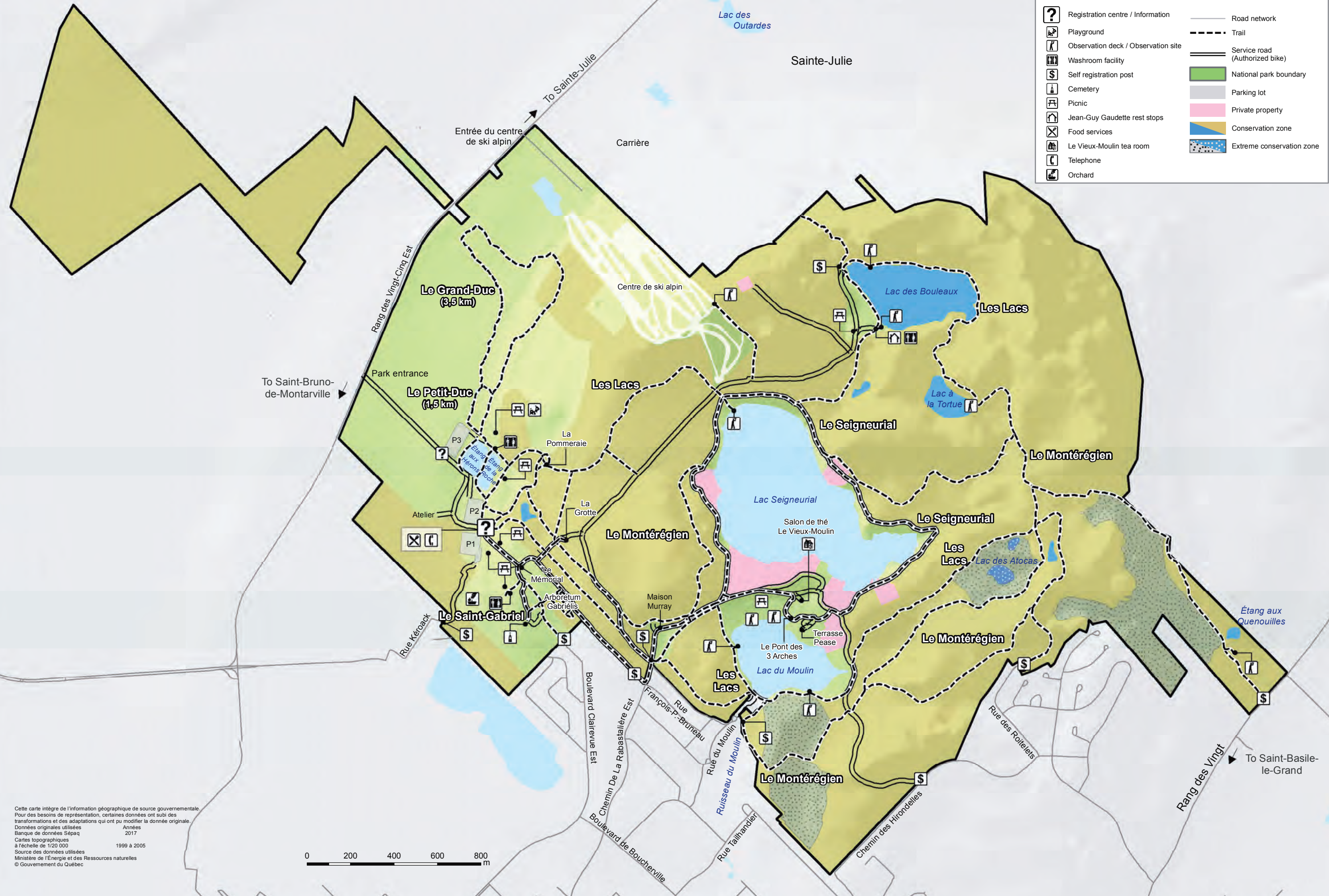
*Depending on snow conditions and customer traffic. **Equipment must be returned before closing time. The calendar and opening hours are subject to modifications depending on temperatures and customer traffic. You can refer at all times to the park's Web site to find out about changes to the calendar and opening hours. Prices, payment terms and services are subject to change without prior notice.





30

	Registration centre / Information		Road network
	Playground		Trail
	Observation deck / Observation site		Service road (Authorized bike)
	Washroom facility		National park boundary
	Self registration post		Parking lot
	Cemetery		Private property
	Picnic		Conservation zone
	Jean-Guy Gaudette rest stops		Extreme conservation zone
	Food services		
	Le Vieux-Moulin tea room		
	Telephone		
	Orchard		



Cette carte intègre de l'information géographique de source gouvernementale. Pour des besoins de représentation, certaines données ont subi des transformations et des adaptations qui ont pu modifier la donnée originale. Données originales utilisées : Années 2017, Banque de données Sépaq, Cartes topographiques à l'échelle de 1/20 000 (1999 à 2005). Source des données utilisées : Ministère de l'Énergie et des Ressources naturelles, © Gouvernement du Québec.



DISCOVERY ACTIVITIES

Free for children (accompanied by an adult)

SPRING / April 1 to May 31

Participating is great! Reserving your spot in advance is even better!

	DAYS	Time	Activities	Rates	Meeting
APRIL	Friday 14 Saturday 15	7:30 p.m. to 9 p.m.	Encounter with the American Woodcock! **	Adult : \$8	Ponds' Parking Lot
	Saturday 29 Sunday 30	1:30 p.m. to 4 p.m.	Thematic Weekend "Frogs, Snakes and Company"	Free	Discovery and Services Centre
MAY	Sunday 7	10 a.m. to 11:15 a.m.	Family Afternoons **	Free	Confirming the location as part of your reservation
	Friday 12 Saturday 6-13	8 p.m. to 10 p.m.	Owls, Where Are Yooooooooou? **	Adult : \$9	Outside Amphitheatre *
	Sunday 14	1:30 p.m. to 4 p.m.	Mothers' Day Rally NEW	Free	Discovery and Services Centre

SUMMER / June 1 to August 31

Participating is great! Reserving your spot in advance is even better!

	DAYS	Time	Activities	Rates	Meeting
JUNE	Sunday 4	10 a.m. to 11:15 a.m.	Family Afternoons **	Free	Confirming the location as part of your reservation
	Saturday 10-17	9 p.m. to 11 p.m.	On the BatWay **	Adult : \$9	Discovery and Services Centre
JULY	Sunday 2	10 a.m. to 11:15 a.m.	Family Afternoons **	Free	Confirming the location as part of your reservation
	Saturday 8-15	9 p.m. to 11 p.m.	Stars for A Night **	Adult : \$9	Discovery and Services Centre
	Sunday 16-30	1:30 p.m. to 3:30 p.m.	Secret's Pond	Free	Ponds' Parking Lot
AUGUST	Sunday 6	10 a.m. to 11:15 a.m.	Family Afternoons **	Free	Confirming the location as part of your reservation
	Sunday 12	8:30 p.m. to 11:30 p.m.	Shedding Light on the Stars Evening NEW	Free	Old Mill Tea Room Area
	Sunday 13	1:30 p.m. to 3:30 p.m.	Secret's Pond	Free	Ponds' Parking Lot
	Sunday 27	1:30 p.m. to 2:45 p.m.	Into the World of Mushrooms **	Adult : \$8	Outside Amphitheatre *

AUTUMN / September 1 to October 31

Participating is great! Reserving your spot in advance is even better!

	DAYS	Time	Activities	Rates	Meeting
SEPTEMBER	Sunday 3	10 a.m. to 11:15 a.m.	Family Afternoons **	Free	Confirming the location as part of your reservation
	Saturday, Sunday 9-10-16-17-23 and 24	11 a.m. to 3 p.m.	Thematic Weekend "Birds of Prey"	Free	Pommeraiie Orchard
	September 9		Quebec National Park Day		See our complete program at our website
	Sunday 10-24	1:30 p.m. to 2:45 p.m.	Into the World of Mushrooms **	Adult : \$8	Outside Amphitheatre *
	Sunday 3-10-17 and 24	1:30 p.m. to 3:30 p.m.	The Legacy of the Brothers of St.Gabriel	Free	IRDA Orchard
OCTOBER	Sunday 1 ^{er} octobre	10 a.m. to 11:15 a.m.	Family Afternoons **	Free	Confirming the location as part of your reservation
	Sunday 1-8	1 p.m. to 3 p.m.	Animation at <i>Vieux-Moulin</i>	Free	Tea Room, The Old Mill (<i>Vieux-Moulin</i>)
	Sunday 22	10 a.m. to 11:30 a.m.	Into the World of Bird Nests **	Adult : \$8	Outside Amphitheatre *

Find out about our discovery stands to be open every Sunday from 1:30 to 3:30 P.M., from May 20 to October 23. Keep an eye on our bulletin board at the Discovery and Services Centre to take note of these stands' locations.

* The outside Amphitheater is located near the Discovery and Services Centre. ** Reservation required. It is necessary to register in advance, either in person at the DSC or by phoning 450-653-7544.



A KEY ROLE

Since 2005, the *Parc national du Mont-Saint-Bruno* has been tracking anuran populations in the park. The numerous temporary and permanent wetlands in the park provide superb environments for reproduction of these species! Thus every spring, as part of our environmental indicator monitoring program (EIMP – *PSIE*), the Conservation and Education Department team takes stock of anurans, i.e., frogs, toads and tree frogs.

In order to draw up this inventory, a park warden armed with field sheets follows a path dotted with 10 anuran song listening stations. At every one of these stations, the park warden listens to anuran songs and can identify the various species heard based on the songs. For each species, an abundance rating ensues from these listening exercises. Of the 11 anuran species inhabiting Quebec, six can be found at the park:

- American toad;
- northern spring peeper;
- tetraploid grey treefrog;
- bullfrog;
- green frog;
- wood frog.

Anurans play a key ecosystemic role, for they are considered indicator species for wetlands. Indeed, their reproduction depends on wetlands, and if deterioration of some kind occurs in these environments, it can lead to a fallback in their diversity and/or abundance. Owing to their semi-watertight skins, they are especially sensitive to water quality and contaminants. And since they lie at the base of the food chain, a major ebb in anuran populations could affect a multitude of other species that feed on them. However, since we have been making anuran inventories, our data show stable populations, which is an encouraging sign. Finally, every spring, we invite visitors to participate in our thematic weekend on amphibians and reptiles. This year, come over in hefty numbers on April 29 and 30, and discover a wealth of knowledge on these fascinating creatures!

To find out more about conservation initiatives and issues in Quebec's national parks, visit parcsquebec.com/blogue.

To find out how to take part in conservation of our national parks, visit fondsparcsquebec.com.

SPECIAL ACTIVITIES

STARS FOR AN EVENING

These guided evening tours introduce you to the fascinating world of fireflies and allow you to experience the park in a new light... that of the night! Indeed, sundown marks wake-up time for several animals, often little-known or ignored. With no daylight around, the hiker's other senses suddenly become more acute... Do you hear the frog's call? Do you notice the skunk's scent? Bats, raccoons, flying squirrels... What surprises does the night hold in store for us? Follow your guide to find out.

Rates: \$9 / adult • Free for children
(accompanied by an adult)

FAMILY AFTERNOONS

On the first Sunday of each month, from May to October, come and take part in our Family Afternoons! Through the seasons, do-it-yourself workshops, interactive games and exciting discoveries will get you to unveil the thousand and one facets of Mother Nature.

Rate: Free



SHEDDING LIGHT ON THE STARS EVENING

An evening focusing on the stars is awaiting you! Near the Old Mill Tea Room, in an enchanting setting, come over to observe the stars above, and learn more about the mysterious world of the night! For the occasion, the Tea Room will be open. Bring your blankets or lawn chairs and make yourselves comfortable in our natural Amphitheatre!

Rate: Free



FAMILY FUN IS HERE!

Here are a few extras we have in place for you to simplify your life and to help you save money:

For your children 17 years of age and under

FREE ACCESS to national parks

Varied and rewarding **ACTIVITIES**

Outdoor **EQUIPMENT LOAN***

ACCESSORIES* on loan for young children

*Limited quantities available



Look out for this marker which identifies the ideal family experiences.

Discover our top family destinations at sepaq.com/family

OUR TOP PICKS

AT PARC NATIONAL PARC NATIONAL DU MONT-SAINT-BRUNO

Here are a few extras we have in place for you:

- Free access to national parks and discovery activities for youngsters 17 years old and under
- Free equipment loan: high chairs, strollers and baby carriers.
- Accommodation options for all budgets

There's no lack of family-friendly activities. Here are some examples available at Parc national Mont-Saint-Bruno:

- Picnic area
- Playground
- Discovery activities free of charge for children (accompanied by an adult)
- Some trails are accessible by stroller (free rental, available at the park's reception area) and easy enough to do hiking in the forest.
- Apple picking
- Free cross-country ski equipment for children

RÉSEAU **Sépaq** 

PLAY ^{IT} SAFE



In the wild, your **safety** is your **responsibility**

Sépaq's mission is to ensure the widest possible access to Québec's most beautiful natural treasures. Sépaq is committed to the safety of its visitors and urges you to play it safe!

Preparing yourself adequately is the first step in the safe and enjoyable practice of your favourite activities. **YOU ARE RESPONSIBLE FOR YOUR OWN SAFETY** and risk management is an integral part of your experience.

Before leaving for an excursion, **MAKE SURE YOU HAVE THE SKILLS AND ABILITIES REQUIRED** to practice your chosen activity **AND RESPECT YOUR PHYSICAL LIMITS**. Your outing should leave you with nothing but pleasant memories. There are a number of organizations that can help you plan your activities safely. Do not hesitate to contact them. We also invite you to consult our safety guides for Sépaq activities on our website at sepaq.com/security.

CHECKLIST

BEFORE YOU LEAVE HOME

- Plan on going with at least one other person.
- Check the weather report.
- Pack water and food, even if the activity is only for a few hours.
- See that you have appropriate clothing and footwear for anticipated weather conditions.
- Let somebody know the exact location of your destination and the time you plan to return home.






ONCE YOU ARE ON SITE

- Do not rely on your cellphone.
- Check how much time it will take to complete your activity.
- Obey signs and notices, including bans on open fires.

WHEN YOU GET BACK

- Once you have completed your activity, make sure that you report to our staff anything wrong or any damage or problems you encountered.

REMINDERS

-  During your visit to a national park, you must always carry your entry fee receipt or your annual entry card.
-  To preserve our natural riches, you are not allowed to remove any natural elements (animals, plants, dead wood, rocks, etc.). Please also keep to established hiking trails to avoid trampling flora.
-  Animals find all they need to eat in nature. Feeding wildlife can be very damaging. Keep food or garbage out of reach of animals.
-  We ask you to carry out all your garbage.
-  Domestic animals are not accepted in Québec's national parks. However, guide dogs and service dogs are admitted.

PILOT PROJECT AUTHORIZING DOGS

A pilot project is in place, authorizing the presence of dogs in FRONTENAC (Saint-Daniel sector), JACQUES-CARTIER and OKA national parks, and will continue into its second year. Please read the applicable rules and authorized places at sepaq.com/animals.

IN CASE OF EMERGENCY: 911

SÛRETÉ DU QUÉBEC: 310-4141 (general number) / *4141 (for cellphones)

*Where cellphone networks are available. The costs and expenses incurred in conducting search and rescue operations are the responsibility of the beneficiary. You can obtain protection against these risks from an insurer.

Parc national du Mont-Saint-Bruno

Discovery and Services Centre

Telephone : 450-653-7544 / Fax: 450-653-0509
parc.st-bruno@sepaq.com
www.parcquebec.com/montsaintbruno

Administration

55 île Sainte-Marguerite, P. O. Box 310
Boucherville, Québec J4B 5J6 • Telephone : 450-928-5089

Legal Deposit: 2017

Bibliothèque et Archives nationales du Québec

Photos: Mathieu Dupuis, Steve Deschênes, Audrey Vivier, Francis Gignac, Louise Cadieux, Valérie Patenaude, Daniel Savard, Steve Gignac, Jacques Tremblant, Brendan Lally



40 OTHER MODELS IN STORE



BELOEIL - BROSSARD - BURLINGTON - CAMBRIDGE - ETOBICOKE
LAVAL - OSHAWA - OTTAWA - QUÉBEC - VAUDREUIL-DORION - VAUGHAN

SAIL