

Journal

2013 • 2014 | ENGLISH VERSION



PARC NATIONAL DE LA GASPÉSIE



MESSAGE FROM THE MINISTER



In 1999, the Government of Québec entrusted Société des établissements de plein air du Québec (Sépaq) with the mission of managing, protecting and developing Québec's network of national parks located above the 50th parallel. Overall, there are now 22 national parks across the different regions of Québec. A marine park operated jointly by Parcs Québec (Sépaq) and Parks Canada has been added to these many natural sites of outstanding beauty.

Every day, staff members at the national parks strive to preserve these unmatched natural resources for the enjoyment of visitors from Québec and abroad. Measures are implemented on a daily basis to preserve a legacy of exceptional sites for future generations. Emphasizing the benefits of nature on young people is therefore important, so that the generations to come know how to make the most of Nature's wonders and deal with the protection and conservation challenges to be faced in the future.

New premises will open in 2013 at Parc national du Lac-Témiscouata, the latest addition to the Parcs Québec network. The park was officially established in 2009 to protect a representative sample of natural sites at Monts Notre-Dame. Parc national du Lac-Témiscouata features quality infrastructures in line with national park standards. This protected area is actually renowned for its wetlands and its ornithological and archaeological wealth. I invite you to come and discover the park this summer.

A third national park north of the 50th parallel will also be created following the Pingualuit and Kuururjuaq projects. Covering 26,000 km² of land, Parc national Tursujuq will allow us to achieve the 9% mark of protected areas across Québec. Like the other two northern parks, the management and development of this new territory is entrusted to the Kativik Regional Government.

Clearly, the range of protected areas is expanding with each passing year. In your vicinity or on the road to your summer holidays, you are sure to find a park to explore. Enjoy a wonderful season of discovery at your national parks!

Yves-François Blanchet
Minister of Sustainable Development, Environment, Wildlife and Parks

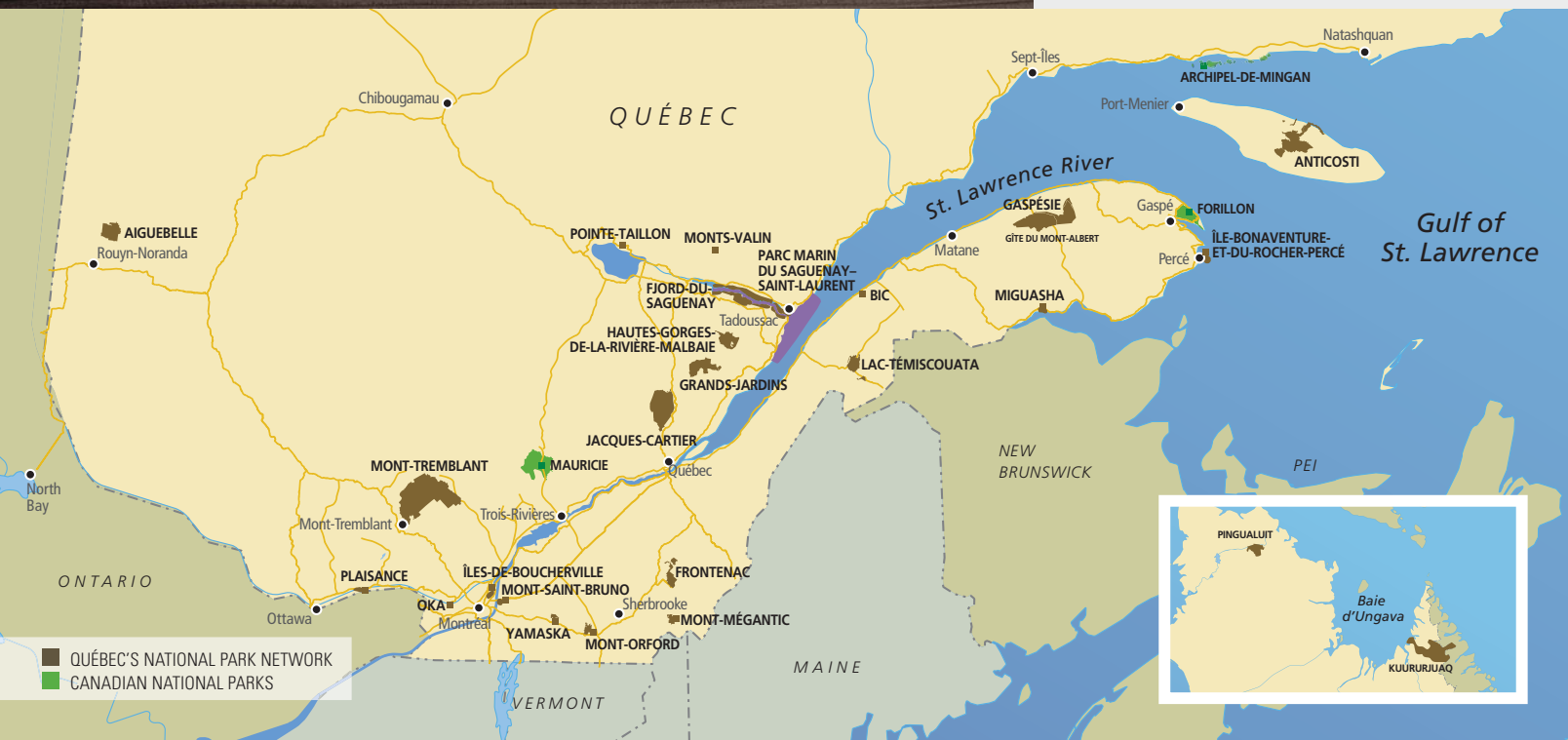
THE MISSION OF PARCS QUÉBEC

With a view to achieving harmonious development at the cultural, social, economic and regional levels, Parcs Québec is responsible for the conservation and development of territories that are representative of Québec's 43 natural regions and exceptional sites, due notably to their biological diversity, while ensuring that they are accessible for educational and outdoor use.

All of Québec's national parks were created in accordance with World Conservation Union standards. A national park is a relatively vast area:

- ▶ that represents one or more ecosystems that are moderately or not at all transformed by exploitation;
- ▶ where animal and plant species, geomorphological sites and habitats are of particular interest from a scientific, educational or recreational viewpoint, and that offers scenery of great beauty;
- ▶ in which the highest competent authority of the country has taken measures to eliminate exploitation and to instill respect for the ecological, geomorphological or aesthetic aspects on the whole;
- ▶ where a visit is authorized, under certain conditions, for educational, cultural or recreational purposes.

DISCOVER QUÉBEC'S NATIONAL PARKS





THE MUST-DOS



▶ THE HIKE TO LAC AUX AMÉRICAINS

Unquestionably the most beautiful lake in the Parc national de la Gaspésie! This short hike, a 2.6-kilometre round trip, is a great outing for the family or simply a way to stretch your legs before dinner. The steep-sided lake at the foot of the mountains is an extraordinary spot for quiet contemplation. The light at day's end is a photographer's delight. Come get your own perfect shot of this crystalline gem! Information on page 9.



▶ MONT JACQUES-CARTIER

Looking for a change of scenery? You've just found it! The second highest peak in Quebec at 1270 metres, this mountain stands like an island remnant of the far north, witness to a distant ice age. In addition to walking through alpine tundra, you'll hike through mountain caribou habitat all the way to the observation tower on the summit. Who knows? Perhaps a memorable encounter with a caribou awaits you! To protect the unique character of this place, access to the mountain is carefully managed. Check the schedule. A little tip: take public transit from the Discovery and Visitor Centre to the trailhead. Information on page 9.



▶ MONT ERNEST-LAFORCE

Of all the hikes in the park, this one offers the greatest reward for the effort. The 4.5-kilometre accessible trail leads through the heart of moose habitat. Meeting the king of the forest in his own realm is always an incredible experience! As a bonus, the views of Mont Albert are breathtaking! Don't forget your camera! Information on page 15.



▶ "SUMMIT MEETING" INTERPRETIVE TALKS

One of the reasons for the creation of the Parc national de la Gaspésie in 1937 was to protect the caribou that make their home in the mountains. The caribou is one of the region's most distinctive inhabitants, but it is endangered. Learn about this noble emissary of the wild and its precarious future during evenings hosted by one of our park ranger-naturalists. We'll be expecting you at the Discovery and Visitor Centre. Check the schedule on page 10.



▶ RABASCAW OUTINGS ON THE LAKE

The **rabascaw** is a large birch-bark canoe originally used by fur traders. Today, we use them for outings on Lac Cascapédia. In the late afternoon or at dusk, come join the crew of our experienced park ranger-naturalist, who will introduce you to the secrets of this mountain lake ecosystem. Reserve your seat at the reception desk. Fees and information on page 10.

WELCOME

WE'RE DELIGHTED TO WELCOME YOU TO PARC NATIONAL DE LA GASPÉSIE.

A mecca for hiking, the Parc national de la Gaspésie is your gateway to extraordinary mountain environments. The Chic-Choc and McGerrigle Mountains cover 802 square kilometres of the park, and within these two ranges, there are more than 25 peaks that rise above 1,000 metres. Of these, the best-known are Mont Jacques-Cartier, Mont Albert and Mont Logan. The elevation of these mountains profoundly influences the climate, shaping the entire landscape and giving rise to a diversity of species that is unique in Quebec and even in the world. The arctic and alpine plants and the tundra landscapes create habitat for a herd of mountain caribou, the last representatives of this species south of the St. Lawrence River.

Visitors always leave with indelible memories – come find a few of your own!

Welcome to the Parc national de la Gaspésie!

Entry fees valid from April 1, 2013 to March 31, 2014

CATEGORY OR GROUP	DAILY RATES	ANNUAL PARK CARD	ANNUAL NETWORK CARD
Adult (18 or over)	\$6.50	\$32.50	\$58.50
Child (6 to 17)	\$3.00	\$15.00	\$27.00
Child (under 5)	Free	Free	Free
1 adult with children 6 to 17	\$9.50	\$47.50	\$85.50
2 adults with children 6 to 17	\$13.00	\$65.00	\$117.00
Organized adults group*	\$5.75	N/A	N/A
Organized youth group (aged 6 to 17)	\$2.50	N/A	N/A
School or student group**	Free	N/A	N/A

Taxes included. Park or Network card is valid for 12 months.

* One transaction for groups of at least fifteen people. | ** Quebec institution

The prices, terms and services mentioned in this newsletter are subject to change without notice.

Your Safety : Your Responsibility



Outdoor activities can involve certain risks. Make sure that you have the skills and abilities required for the activity you choose. It is important to know the risks inherent to this activity, to respect your limits and to use appropriate equipment. For more information, we invite you to consult our Web site at sepaq.com.



[www.facebook.com/
ParcNationaldeLaGaspesie](http://www.facebook.com/ParcNationaldeLaGaspesie)



REGULATIONS



To contribute to improving the quality of the park experience, an entry fee was established by the government. You must always carry your receipt or your annual card during your visit.



To preserve the natural riches for future generations, it is prohibited to remove natural elements (animals, plants, dead wood, rocks, etc.).



The flora is sensitive to being trampled. If we multiply the impacts of thousands of visitors, it's easy to understand why it is mandatory to stay on the hiking trails.



Nature exhibits exemplary equilibrium. The animals find everything they need to eat here, and that is why feeding wildlife is prohibited. In this respect, it is also prohibited to leave food or garbage unsupervised. Keep them in your car.



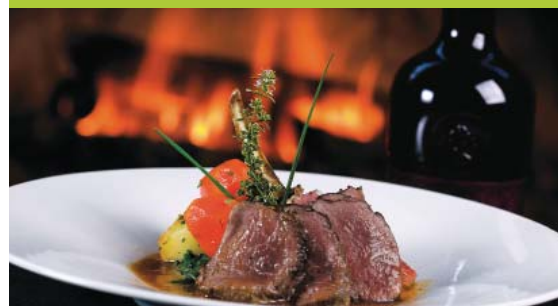
Domestic animals are prohibited in Québec's national parks. But guide dogs and service dogs accompanied by their foster families are admitted. However, these dogs must be easily identifiable, wearing the Mira scarf or harness. Those in charge of the animal must carry the foundation's letter of accreditation.



It's great to enjoy an authentic natural environment that is clean and healthy! Carry out your garbage, leave it in the containers provided, and take home any harmful substances, such as soap, oil, combustibles or pesticides.



For the preservation of the milieu and for your safety, only a certain number of activities are allowed in these parks. Plan your visit and first check the list of activities that are allowed in the parks you plan to visit.



SERVICES

PEAK SERVICE!

The Gîte du Mont-Albert is open to all park visitors — sip an espresso in front of the fireplace, treat yourself a massage in our spa pavilion or spend a gourmet evening enjoying our renowned table d'hôte. Don't hesitate to ask one of our representatives about the inn's services. Come on in! We're expecting you!

GÎTE DU MONT-ALBERT

This inn has been renowned for gourmet regional cuisine since 1950. Whether for just one night or for a whole week, there's a package deal that's right for you. The inn's perfect blend of the great outdoors and fine dining will delight you!



THE GÎTE DU MONT-ALBERT CABINS

Accommodating parties of two to eight people, our twenty-three cottages are sure to please. Nestled in the woods surrounding the inn, their unique style inspires relaxation and adventure. In addition to eighteen fully-equipped cottages, most with kitchens and a spectacular view of Mont Albert, there are five smaller, tastefully decorated cabins along the banks the Sainte-Anne River. Visit the Lodging section of the park's website for rates, terms and reservations.

DISCOVERY AND VISITORS CENTRE

You'll find everything you need here! Whether you want to book a campsite or hut, plan and prepare for your excursions, or use our outdoor equipment rental services, you can count on us.

The Centre is also where you can begin to discover the park by:

- Visiting the thematic exhibit "A sea of mountains in the heart of the Gaspé Peninsula";
- Participating in discovery activities and talks;
- Consulting field guides and specialised documents available to visitors.

At the centre, you will also find:

- *Boutique Nature* gift shop with regional handicrafts and a convenience store;
- An outdoor equipment rental service where you can rent appropriate footwear and equipment;
- Shower facilities and laundry facilities, so convenient when you're on the road;
- Storage facilities where you can safely leave behind small or large objects you can't take up the mountain.

You will need several days to take full advantage of the variety of activities and the natural environment of *Parc national de la Gaspésie*. For more information or to book on-line, consult our web site at www.parcquebec.com

Information and Reservations at the Gîte du Mont-Albert
1-866-727-2427 · www.gitedumontalbert.com



Primitive camp sites

Accessible on foot for long-distance hikers (or by canoe for canoe-camping), these secluded sites guarantee intimacy in a remarkable unspoiled wilderness setting. Self-supporting tents can be set up on wooden platforms. There is a pit toilet near each site. Campfires are prohibited.



Served campgrounds

Located in wooded areas, all sites can be reached by car. Campers have access to a building with sanitation services. The park's four campgrounds include 212 sites. The *La Rivière* campground has 13 sites with water and electricity.



Huts

Visitors can book accommodation for one or more people. Huts are shared by different groups. Each hut is equipped with a wood stove, table, chairs, beds with mattresses, and a kitchen counter. There are huts at the campgrounds and several are also available along the long-distance hiking trails.



Lac-Cascapédia Cabins

Located on the lakeside, these cabins promise a comfortable and peaceful stay. The lighting, stove and refrigerator run on propane. Dishes are provided, but not bedding.



Bistro Le Piedmont

Come admire imposing *Mont Albert* while enjoying the pleasures of the table in a relaxed atmosphere. Choose from the daily menu, ask to have a box lunch prepared, or simply have a drink with friends on the terrace.

Information and Reservations at the Discovery and Visitors Centre



THE GASPÉ CARIBOU... STILL ALIVE!

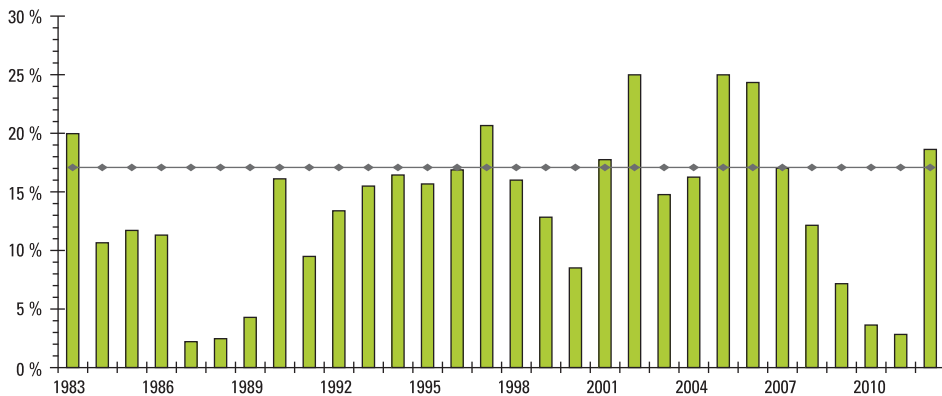
By **Claude Isabel**, head of the department of conservation and education

The fragile status of the Gaspé caribou population has been amply demonstrated. Indeed, the species has been protected for many years by both federal and provincial endangered species legislation. Nonetheless, the current ecological context continues to impact the survival of this emblematic species of the Gaspésie. Despite the downward population trend, the results of the aerial survey conducted in the fall of 2012 by the Ministère des Ressources naturelles have rekindled hopes.

After several years of declines in recruitment since 2007, the proportion of calves in the herd rebounded to 18.7% last fall, which exceeds the 17% threshold for self-sustaining populations. The survey results are an encouraging sign of the Gaspé caribou's robust capacity to recover normal development, even after six years of continuous decline. The good survival of the fawns born in the spring of 2012 also shows that everything we do to restore this population – from the smallest acts to the major programs – helps it survive and grow.

All of this clearly indicates that efforts to re-establish the Gaspé caribou are not in vain and there is still hope that one day the Gaspé caribou will be able to live in balance in our environment.

Percentage of calves in the Gaspé caribou population



Source: Ministère des ressources naturelles



Société Art et Science pour la Nature

*Galerie d'art
Monique et Gisèle Benoit*

The most important wildlife art exhibition in eastern Canada!

218, 1^{re} Avenue Est, Sainte-Anne-des-Monts (Québec)

Telephone : 418 764-2092

Open every day from June 1st to October 15th from 9:00 to 6:00
(To visit us in the off season, an appointment is necessary.)

www.sasnature.org



PARC NATIONAL
DE L'ÎLE-BONAVENTURE-
ET-DU-ROCHER-PERCÉ



Photos: Colette Chailion, Mélanie Sabourin

NIGHTTIME OUTING

Come experience the incredible feeling of being on the island at nightfall, whether to enjoy the tranquility of the island at dusk, to watch over the gannet colony in peaceful sleep or simply to admire the dark mass of Percé Rock across the water. Ten nighttime outings are planned to create magical holiday memories.



From July 16 to
August 17, every
Tuesday and Saturday.

\$29.95 + taxes
Duration: 4 hours



parcsquebec.com • 1-800-665-6527



380 million years later...



...we're still talking about it
at the Musée d'histoire naturelle de Miguasha

231 Route Miguasha Ouest
Nouvelle (Québec) G0C 2E0
418-794-2475 • 1-800-665-6527
ParcsQuebec.com



AUBERGE DE MONTAGNE DES CHIC-CHOCS

TAKE A THREE-DAY
SABBATICAL

OPEN IN
THE WINTER

Hiking • Mountain bike • Wildlife and plant watching • Relaxation



Photos : Mathieu Dupuis, Steve Deschênes, Pub Photo

Reception office only 19 km from the Parc national
de la Gaspésie Discovery and Visitors Centre.



1 800 665-3091
chicchocs.com



VILLAGE GRANDE NATURE CHIC-CHOCS



ACCOMMODATION

ACTIVITIES

RESTAURANT

SERVICES

Village Grande Nature Chic-Chocs is an exceptional vacation centre.
Located 19 km (12 mi.) south of Cap-Chat and about 400 m,
is surrounded by the Chic-Choc Mountains.



Toll Free:
1-800-530-2349

951, route Saint-Octave, C.P. 518
Cap-Chat (Québec) G0J 1E0

village.accueil@globetrotter.net
www.villagegrandenaturechic-chocs.com

THE PARC NATIONAL DE LA GASPÉSIE PARTICIPATING IN A GLOBAL CLIMATE CHANGE MONITORING NETWORK

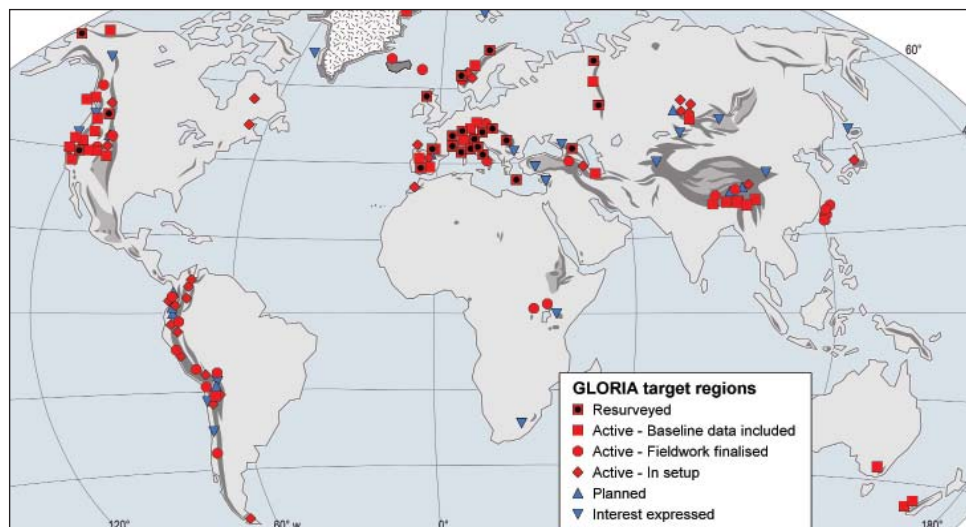
By **Claude Isabel**, head of the department of conservation and education

The Parc national de la Gaspésie is one of the largest expanses of alpine tundra anywhere in eastern North America. Due to its accessible location south of the St. Lawrence River, the park has been a convenient site for scientists to monitor the progression or regression of the tree line in the context of climate change.

For several years, the park has been collaborating with various universities to help build our knowledge in this field. Since 2012, the vegetation on the park's four mountain summits has been monitored as part of an international project called GLORIA (**GL**obal **O**bservation **R**esearch **I**nitiative in **A**lpine environments, <http://www.gloria.ac.at>).

The Chic-Choc Mountains station is part of a network of 115 GLORIA stations distributed throughout the world, and it is one of only two such stations in eastern North America.

Every five years, researchers from the Université de Moncton will conduct vegetation surveys on four transects oriented along north-south or east-west axes. This periodic monitoring will make it possible to document changes in vegetation to improve our understanding of the effects of climate change on the park's ecosystems.



**AVENTURE ÉCOTOURISME QUÉBEC AT
PARC NATIONAL DE LA GASPÉSIE**

The outfitters, members of Aventure Écotourisme Québec, in collaboration with the Sépaq, offer you several stays and guided activities especially conceived to have you discover exceptional natural spaces. AEQ groups together more than one hundred producers in adventure tourism and in ecotourism that join forces to offer you high-quality products.

Plan your next guided outing with:

**SENTIER INTERNATIONAL
DES APPALACHES**
Hiking
418 562-7885

SKI CHIC-CHOCS
Backcountry alpine skiing (ascent by snowcab)
418 763-3333

RÉSEAU Sépaq  
Aventure
Écotourisme
Québec
www.quebecadventure.ca

INTERSPORT®

Rental

Bike, cross-country and off-track ski, climbing skin, snowshoe and avalanche equipment.

111, blvd. Sainte-Anne West,
Sainte-Anne-des-Monts
Telephone: 418 763-2141

Familiprix

Guylaine Lepage pharmacienne
Associée au groupe FAMILIPRIX

11, boul. Sainte-Anne Est
Sainte-Anne-des-Monts, QC
G4V 1M4
Courriel : 1354@familiprix.com

Tél. : (418) 763-7848
Urgence : 763-2158
Télé. : (418) 763-2010

MONT JACQUES-CARTIER: AN OUTING TO A PROTECTED AREA



THE FOLLOWING RULES GOVERN ACCESS TO MONT JACQUES-CARTIER:

- Going off marked trails is prohibited.
- Hiking on the *Mont Jacques-Cartier* trail is authorised only from June 24 to September 30 inclusively.
- Hiking on the *Mont Jacques-Cartier* trail is authorised only between 10 a.m. and 4 p.m.
- It is forbidden to begin your hike before the authorized time.
- Departures are not permitted after noon.
- The return trip must be completed during the above-mentioned times.

A park warden makes sure these rules are respected; ask him or her to find out when you should head back down the mountain.

THE TRAIL

The trail is composed exclusively of rocks. We strongly recommend you wear hiking boots. One third of the route crosses bare land: there are no trees, nothing to protect you from the often adverse weather conditions. Ask park staff for advice when planning your excursion.

Turn to page 15 for a description of the trail.

PUBLIC TRANSIT TO THE TRAILHEAD

Every day, a bus leaves the Discovery and Visitors Centre for the Mont Jacques-Cartier campground and then provides shuttle service between the campground and the trailhead. The service is offered on a round-trip basis.

You cannot use your own vehicle to reach the trailhead.

Mont Jacques-Cartier is the second highest summit in Québec after *Mont d'Iberville*, in the Torngats. It is an essential habitat in the main living area of the Gaspésie caribou and the best place to observe this mammal.

It has now been acknowledged that the presence of hikers in the caribou's habitat definitely has an impact. The extent of this impact is hard to assess, but everyone agrees that wildlife observation must not disturb the species involved.

JUNE 24 TO SEPTEMBER 30				
	DEPARTURE	ARRIVAL	DEPARTURE TIMES	RETURN TIMES
Bus	Discovery and Visitors Centre	Trailhead	9 a.m.	4 p.m.
Shuttle	Mont Jacques-Cartier campground	Trailhead	10 a.m.	2:15 p.m.
			10:30 a.m.	3 p.m.
			11 a.m.	3:30 p.m.
			11:30 a.m.	4 p.m.
12 p.m.				
Public transit	Tourist bureau in Sainte-Anne-des-Monts	Discovery and Visitors Centre	8 a.m.	5 p.m.

➤ **Tickets and prices available at the Discovery and Visitor Centre and at the entrance booth in the Mont Jacques-Cartier campground.**





ABRI LES RABOUGRIS, MONT ALBERT

2013 CALENDAR OF ACTIVITIES

JUNE 25 TO AUGUST 18, 2013

DAY	TIME	ACTIVITY	TYPE OF ACTIVITY	DURATION	FEE	MEETING PLACE
Daily	12 p.m. & 1:30 p.m.	<i>Terre de contraste*</i>	Activities and Sights	45 min.	Free	Les Rabougris shelter, Mont Albert
Daily	12 p.m. & 1:30 p.m.	<i>Vivez le Grand Nord*</i>	Activities and Sights	45 min.	Free	Éole shelter, Mont Jacques-Cartier
Monday	8 p.m.	<i>Les montagnes nous racontent</i>	Multimedia presentation	75 min.	Free	Discovery and Visitors Centre
Tuesday	8 p.m.	<i>Rencontres au sommet</i>	Multimedia presentation	75 min.	Free	Discovery and Visitors Centre
Wednesday	8 p.m.	<i>Les temps changent et les valeurs aussi</i>	Theatrical presentation	60 min.	Free	Discovery and Visitors Centre
Thursday	8 p.m.	<i>Des trésors à partager!</i>	A playful multi-media presentation	75 min.	Free	Discovery and Visitors Centre
Friday	8 p.m.	<i>Les montagnes nous racontent</i>	Multimedia presentation	75 min.	Free	Discovery and Visitors Centre
Saturday	8 p.m.	<i>Rencontres au sommet</i>	Multimedia presentation	75 min.	Free	Discovery and Visitors Centre
Sunday	8 p.m.	<i>Des trésors à partager!</i>	A playful multi-media presentation	75 min.	Free	Discovery and Visitors Centre
Monday, Tuesday, Wednesday, Friday & Saturday	Between 10 a.m. and 12 p.m.	<i>Vue des ères</i>	Activities and Sights	15 min.	Free	Summit of Mont Ernest-Laforce
Monday, Tuesday, Wednesday, Friday & Saturday	Between 2:30 p.m. and 4 p.m.	<i>De roches et de glace!</i>	Activities and Sights	15 min.	Free	Lac aux Américains

* There is a park warden-naturalist available at the summit to talk to you from 11:30 a.m. to 2:30 p.m.

JULY 10 TO AUGUST 24, 2013 LAC CASCAPÉDIA SECTOR

Wednesday & Saturday	8 p.m.	<i>Au pays des Chic-Chocs</i>	Stories and legends	60 min.	Free	Lac Cascapédia
Monday, Wednesday, Thursday & Saturday	3 p.m.	<i>Au fil de l'eau*</i>	Boating excursion Rabaska canoe	90 min.	\$13.50 adults \$6.75 children	Lac Cascapédia
Monday & Thursday	7:30 p.m.	<i>À la tombée du vent*</i>	Boating excursion Rabaska canoe	90 min.	\$13.50 adults \$6.75 children	Lac Cascapédia

* Number of places limited, registration required

AUGUST 19 TO SEPTEMBER 2, 2013

Sunday, Monday, Tuesday, Wednesday, Friday & Saturday	12 p.m. & 1:30 p.m.	<i>Terre de contraste*</i>	Activities and Sights	45 min.	Free	Les Rabougris shelter, Mont Albert
Sun., Mon., Tues., Wed., Thurs. & Sat.	12 p.m. & 1:30 p.m.	<i>Vivez le Grand Nord*</i>	Activities and Sights	45 min.	Free	Éole shelter, Mont Jacques-Cartier
Monday, Thursday & Saturday	Between 2:30 p.m. and 4 p.m.	<i>Vue des ères</i>	Activities and Sights	15 min.	Free	Summit of Mont Ernest-Laforce
Sunday, Wednesday & Friday	Between 2:30 p.m. and 4 p.m.	<i>De roches et de glace!</i>	Activities and Sights	15 min.	Free	Lac aux Américains
Monday	8 p.m.	<i>Les montagnes nous racontent</i>	Multimedia presentation	75 min.	Free	Discovery and Visitors Centre
Tuesday	8 p.m.	<i>Rencontres au sommet</i>	Multimedia presentation	75 min.	Free	Discovery and Visitors Centre
Thursday	8 p.m.	<i>Des trésors à partager!</i>	A playful multi-media presentation	75 min.	Free	Discovery and Visitors Centre
Friday	8 p.m.	<i>Les montagnes nous racontent</i>	Multimedia presentation	75 min.	Free	Discovery and Visitors Centre
Saturday	8 p.m.	<i>Rencontres au sommet</i>	Multimedia presentation	75 min.	Free	Discovery and Visitors Centre
Sunday	8 p.m.	<i>Des trésors à partager!</i>	A playful multi-media presentation	75 min.	Free	Discovery and Visitors Centre

* There is a park warden-naturalist available at the summit to talk to you from 11:30 a.m. to 2:30 p.m.

SEPTEMBER 3 TO 15, 2013

Daily	12 p.m. & 1:30 p.m.	<i>Terre de contraste*</i>	Activities and Sights	45 min.	Free	Les Rabougris shelter, Mont Albert
Daily	12 p.m. & 1:30 p.m.	<i>Vivez le Grand Nord*</i>	Activities and Sights	45 min.	Free	Éole shelter, Mont Jacques-Cartier
Monday, Thursday & Saturday	Between 2:30 p.m. and 4 p.m.	<i>Vue des ères</i>	Activities and Sights	15 min.	Free	Les Rabougris shelter, Mont Albert
Sunday, Wednesday & Friday	Between 2:30 p.m. and 4 p.m.	<i>De roches et de glace!</i>	Activities and Sights	15 min.	Free	Summit of Mont Ernest-Laforce
Sunday, Wednesday & Friday	3 hours before sunset	<i>La vallée des Rois**</i>	Moose discovery activity and hike through moose habitat	3 h	\$22.00 adults \$11.00 children 12 and under	Meet at Discovery and Visitors Centre
Saturday	5 p.m.	<i>Au pays des Chic-Chocs</i>	Stories and legends	60 min.	Free	Gîte du Mont-Albert

* There is a park warden-naturalist available at the summit to talk to you from 11:30 a.m. to 2:30 p.m. | ** Number of places limited, registration required

DISCOVERY ACTIVITIES

(AVAILABLE IN FRENCH ONLY)



VUE DES ÈRES

SEPTEMBER 16 TO OCTOBER 13, 2013

DAY	TIME	ACTIVITY	TYPE OF ACTIVITY	DURATION	FEE	MEETING PLACE
Saturday and Sunday	12 p.m. & 1:30 p.m.	<i>Terre de contraste*</i>	Activities and Sights	45 min.	Free	Les Rabougris shelter, Mont Albert
Saturday and Sunday	12 p.m. & 1:30 p.m.	<i>Vivez le Grand Nord*</i>	Activities and Sights	45 min.	Free	Éole shelter, Mont Jacques-Cartier
Sunday, Wednesday, Friday	3 hours before sunset	<i>La vallée des Rois**</i>	Moose discovery activity and hike through moose habitat	3 hours	\$22.00 adults \$11.00 children 12 and under	Meet at Discovery and Visitors Centre

* There is a park warden-naturalist available at the summit to talk to you from 11:30 a.m. to 2:30 p.m. | ** Number of places limited, registration required

ON THE MOUNTAIN

Vivez le Grand Nord

Why travel a thousand kilometres to the far north when it's within easy reach? Here, on the highest mountain in southern Quebec, the alpine tundra awaits! With a park-warden naturalist at your side, you will truly get the most out of an unforgettable day.

Vue des ères

It's not obligatory, but if you spend a short time with a park warden-naturalist at the top of Mont Ernest-Laforce, the landscape will be revealed and you will go away feeling delighted by this unassuming exchange.

De roches et de glace!

Take advantage of the presence of a park warden-naturalist and learn in just a few moments all about the rich history of one of the most spectacular glacial cirques in Québec, the *Lac aux Américains*.

La vallée des rois



The boreal forest is a dynamic and diversified ecosystem, which is the typical habitat of the world's largest cervidae: his Majesty, the Moose. Accompanied by a park warden-naturalist, you will find out why *Parc national de la Gaspésie* has one of the highest moose densities in Québec. While discovering this part of the moose's kingdom, you might even be lucky enough to encounter one.

Terre de contrastes

The Mont Albert plateau is an exceptional and much appreciated oasis in the heart of the immense boreal forest of the Gaspesian massif. Accompanied by a park warden-naturalist, you will discover an unusual environment that exists nowhere else in the world and learn to understand the origin, beauty and uniqueness of these extraordinary surroundings.

AT LAC CASCAPÉDIA

Au fil de l'eau



Let me show you the largest lake in the park. Young, healthy, and with its own personality: lac Cascapédia. Let's take the rabaska canoe and go discover this fascinating ecosystem.

À la tombée du vent



At the end of the day, let's go out on the lake in a canoe, waiting for that special moment – twilight. The night slowly envelops us. The wind dies down. And everything is changed. The light transforms our surroundings with a multitude of subtle and surprising effects. Being on the lake at sunset creates memories to be treasured for years.

Au pays des Chic-Chocs

This evening, ride on the wings of tales and legends right to the heart of the Chic-Chocs. Listen to tales of legendary adventure, as the voice of Alphonsine or Prospère Pelletier leads you into the wilderness. A voice in your ear and many pictures in your mind. A real vacation!



AU FIL DE L'EAU

AT THE DISCOVERY AND VISITORS CENTRE

Des trésors à partager!

In 1937, no-one imagined that *Parc national de la Gaspésie* harboured so many phenomena and species, as rare and precious as... the apple of your eye. During this activity, a park warden-naturalist will show you many of the park's rare and unique elements. So this is an ideal opportunity to learn while having a good time.

Rencontres au sommet

This is one of the reasons why *Parc national de la Gaspésie* exists. It is one of the finest examples of the region's unique nature. Every effort should be made to save this precious wildlife population. You will learn about the caribou population of the Gaspé and its secrets. Come and discover this ambassador, this friend facing a precarious future.

Les temps changent et les valeurs aussi

From the first occupants to today's visitors, a number of people have left their mark on *Parc national de la Gaspésie*, and during this activity they take turns telling their stories.

Les montagnes nous racontent

From the creation of the Appalachians to our time, witness in person the formation of the monts Chic-Chocs and McGerrigle. This activity will show you the geology of the Gaspé Peninsula massif in an original way. Sketches, lay-outs and samples will let you discover yet another part of the wealth of the *Parc national de la Gaspésie*.



MONT ALBERT



GENERAL MAP (SUMMER)

Fleuve Saint-Laurent

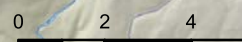
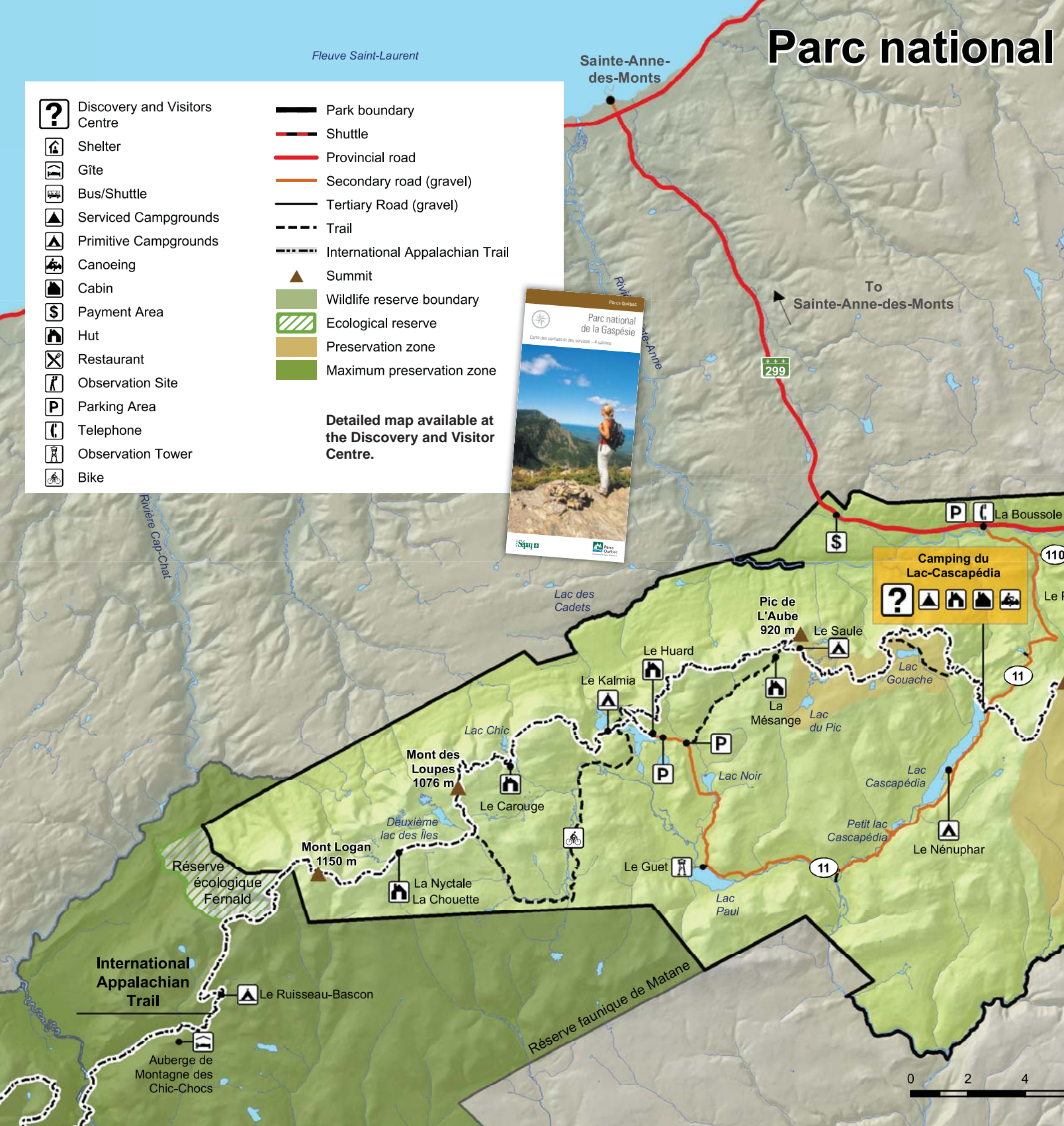
Sainte-Anne-des-Monts

Parc national

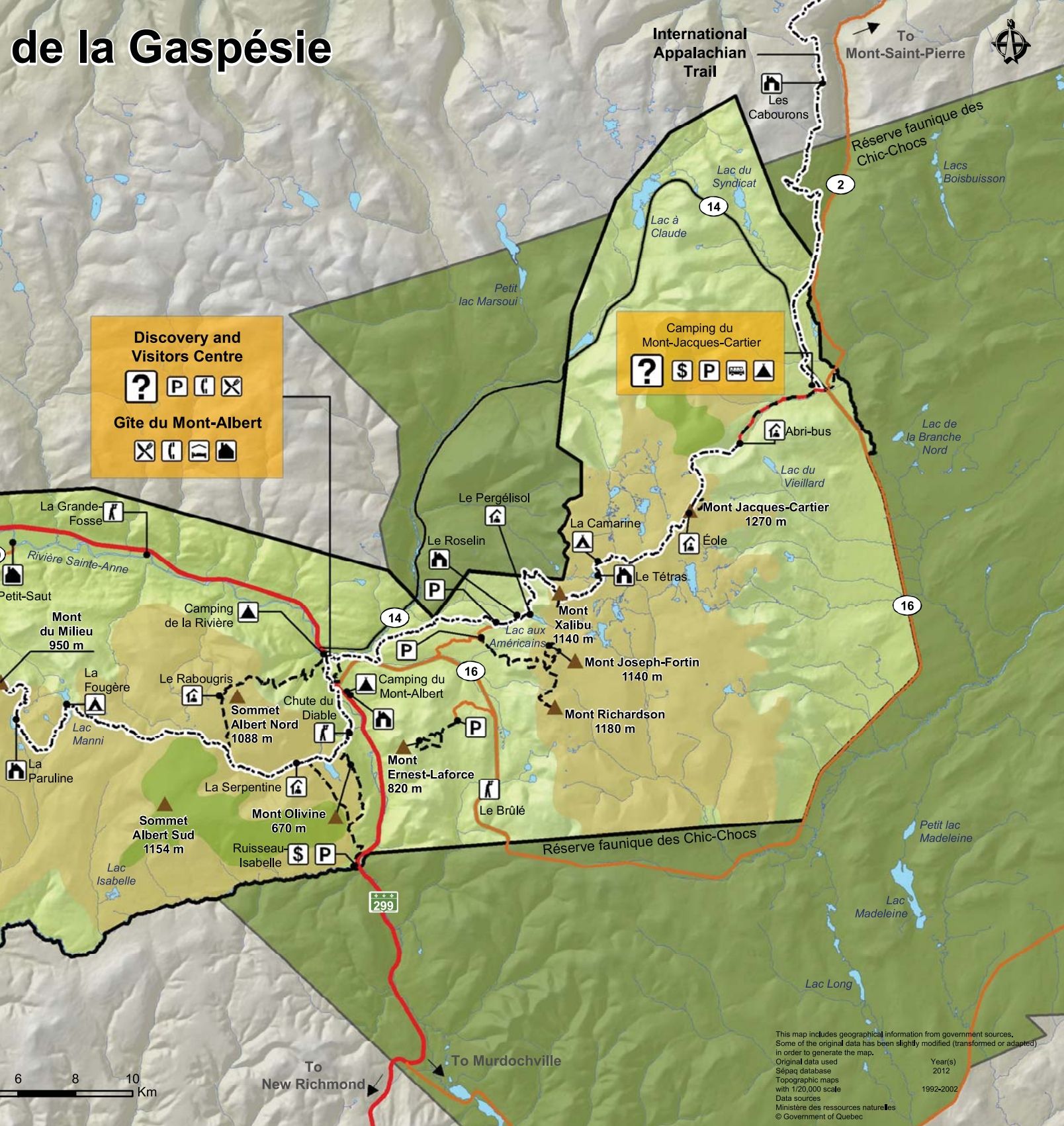
- Discovery and Visitors Centre
- Shelter
- Gîte
- Bus/Shuttle
- Serviced Campgrounds
- Primitive Campgrounds
- Canoeing
- Cabin
- Payment Area
- Hut
- Restaurant
- Observation Site
- Parking Area
- Telephone
- Observation Tower
- Bike

- Park boundary
- Shuttle
- Provincial road
- Secondary road (gravel)
- Tertiary Road (gravel)
- Trail
- International Appalachian Trail
- Summit
- Wildlife reserve boundary
- Ecological reserve
- Preservation zone
- Maximum preservation zone

Detailed map available at the Discovery and Visitor Centre.



de la Gaspésie



MONT-ALBERT SECTOR



HIKING



The *Parc national de la Gaspésie* has a wide array of trails for you to choose from: anything from a 30-minute walk to a 10-day expedition. The many opportunities for day hikes are described in the following table.

Get a copy of the topographical map of the park or visit our web site to find out about the itineraries for backpacking trips with overnight stays in a hut or your own tent.

DESTINATION	DIFFICULTY	LENGTH (KM)	VERTICAL DROP (M)	DURATION	TYPE	DATES FOR 2012 SEASON
DEPARTURE FROM DISCOVERY AND VISITORS CENTRE						
La chute Sainte-Anne	▲	1.7	Low	30 min.	Round trip	All year
La Lucarne	▲	2.5	80	1 hour	Circuit	All year
La Saillie	▲▲	3.4	190	1 hour 30 min.	Round trip	All year
La chute du Diable	▲▲	7	120	3 hours	Round trip	May 18 to November 30
La Serpentine	▲▲▲	12.6	360	4 hours	Round trip	May 18 to November 30
Le mont Albert (La Montée)	▲▲▲+	11.4	850	5 hours	Round trip	June 8 to September 30
Le tour du mont Albert	▲▲▲+	17.4	870	6 - 8 hours	Circuit	June 8 to September 30
DEPARTURE FROM THE MCGERRIGLES SECTOR (ROUTE 16)						
Le lac aux Américains	▲	2.6	80	1 hour 30 min	Round trip	May 11 to November 30
Le mont Ernest-Laforce	▲▲	4.5	155	2 hours	Circuit	May 11 to November 30
Le mont Jacques-Cartier (p.17)	▲▲▲	8.3	465	4 - 5 hours	Round trip	June 24 to September 30
Le mont Xalibu	▲▲▲	10.7	540	5 - 6 hours	Round trip	June 8 to September 30
Le mont Joseph-Fortin	▲▲▲	9.8	490	4 hours	Round trip	May 11 to November 30
Le mont Richardson	▲▲▲+	11.5	705	6 hours	Round trip	May 11 to November 30
DEPARTURE FROM THE LAC CASCAPÉDIA SECTOR (ROUTE 11)						
Le pic du Brûlé	▲▲▲	13.2	430	5 hours	Circuit	June 8 to October 14
Le pic de l'Aube	▲▲▲	11,8	370	4 hours	Round trip	June 8 to October 14
DEPARTURE FROM RUISSEAU ISABELLE PARKING LOT						
La Serpentine	▲▲	9.8	260	3 hours 30 min.	Round trip	May 18 to November 30
Le mont Olivine	▲▲▲	8.6	365	4 hours	Round trip	May 18 to November 30

- ▲ **Easy:** Low vertical drop, short distance, no particular equipment required
- ▲▲ **Intermediate:** Moderate vertical drop or long distance, no special equipment required
- ▲▲▲ **Difficult:** Significant vertical drop, route through mountainous terrain, preparation and good physical condition required

Trail opening and closing dates are established by regulation. However, certain trails may open later than planned or be temporarily closed. We recommend you contact park staff to get an update on trail conditions at the beginning and near the end of the season.

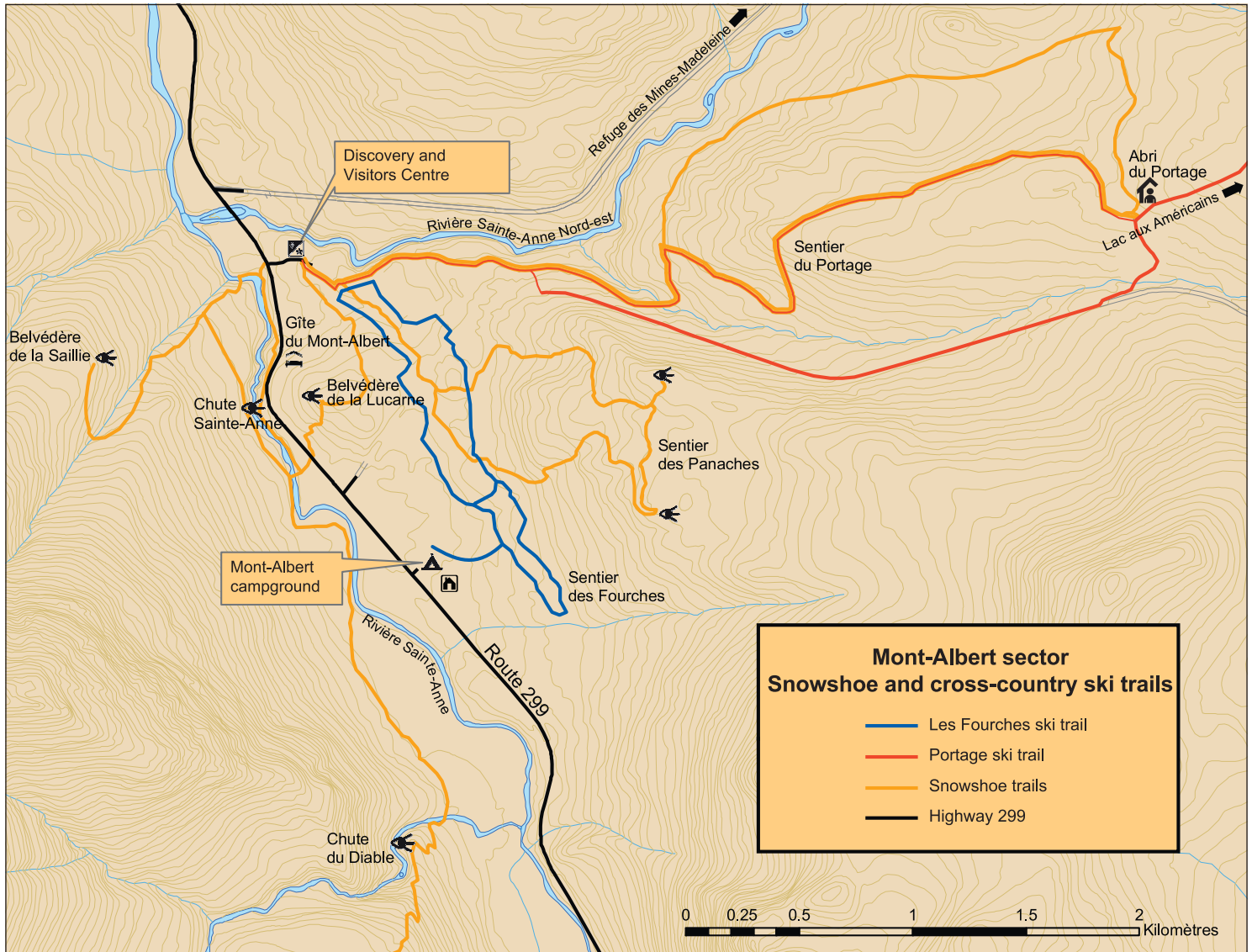
To protect the natural environment and for your own safety, it is prohibited to use a trail that is closed.





SNOWSHOEING AND CROSS-COUNTRY SKIING MAP

REFUGE MONT ALBERT



A PARCS QUÉBEC'S EXCLUSIVE!

Discover the **Huttopia tent**, a simple and comfortable way to discover the joys of camping without all the lugging.

- Each unit includes:
- two big beds
 - supplementary heating and lighting
 - a propane-operated warming tray and a mini-fridge
 - everything you need to prepare meals

2013 SEASON
80 new tents

- 2 new destinations:**
- Îles-de-Boucherville
 - Lac-Témiscouata

LOW SEASON ⁽¹⁾
\$ 99 /night

HIGH SEASON ⁽²⁾
\$ 116 /night

Capacity of 5 people (max. 4 adults)

(1) From Sunday to Thursday until June 20, 2013 and from September 8, 2013.

(2) Fridays, Saturdays, holidays and every day from June 21, 2013 to September 7, 2013. Taxes and entrance fee not included

Online reservation: parksquebec.com/huttopia

SKI OR SNOWSHOE EXPEDITIONS?



LA SAILLIE



Winter activities are authorised from December 1 to April 30

DESTINATION	DEPARTURE POINT	DEGREE OF DIFFICULTY	LENGTH (KM)	VERTICAL DROP (M)	DURATION	TYPE
SNOWSHOEING						
La chute Sainte-Anne	DVC	▲	1.7	Low	45 min.	Round trip
La Lucarne	DVC	▲	2.5	80	1 hours	Circuit
La Saillie	DVC	▲▲	3.4	190	2 hours	Round trip
La chute du Diable	DVC	▲▲	7	120	2 h - 3 h	Round trip
Les Panaches	DVC	▲▲	6.5	220	2 h - 3 h	Circuit
La Serpentine	DVC	▲▲▲	12.6	360	5 hours	Round trip
Le mont Olivine	DVC	▲▲▲	12	445	5 h - 5 h	Round trip
Le lac aux Américains	DVC	▲▲▲	18	460	7 h - 8 h	Round trip
Le ruisseau du Portage	DVC (red trail)	▲▲▲	10.4	260	5 hours	Circuit
La Serpentine	Ruisseau Isabelle	▲▲	9.8	260	4 hours	Round trip
Le mont Olivine	Ruisseau Isabelle	▲▲	8.6	365	4 hours	Round trip
Le champs de Mars	Réserve Chic-Chocs	▲▲	5.2	395	3 hours	Round trip
Le mont Hog's Back	Réserve Chic-Chocs	▲▲▲	6.4	450	4 hours	Round trip
CROSS-COUNTRY SKIING (GROOMED TRAILS)						
Les Fourches	DVC (blue trail)	▲▲	5.3	Low	1 h 30	Circuit
Le ruisseau du Portage	DVC (red trail)	▲▲▲	9.4	260	3 hours	Circuit
Le lac aux Américains	DVC	▲▲▲	17.3	460	5 hours	Circuit
NORDIC SKIING						
Le Petit-Saut	Intersection of Highways 11 & 299	▲	7.6	Low	2 h 30	Circuit
La Grande Fosse	Intersection of Highways 11 & 299	▲▲	19.6	Low	6 h - 7 h	Round trip
La Serpentine	Ruisseau Isabelle	▲▲	9.8	260	3 hours	Round trip
La Grande Cuve	Ruisseau Isabelle	▲▲▲	17	695	5 h - 6 h	Round trip
Le mont Blanche-Lamontagne	Réserve Chic-Chocs	▲▲▲	15.7	625	6 hours	Circuit
GLIDE SPORTS						
Le champs de Mars	Réserve Chic-Chocs	▲▲▲	5.2	395	2 h 30	Round trip
Le mont Hog's Back	Réserve Chic-Chocs	▲▲▲	6.4	450	3 h 30	Round trip
Le mur des Patrouilleurs	Ruisseau Isabelle	▲▲▲	10.7	725	4 hours	Round trip
La Grande Cuve	Ruisseau Isabelle	▲▲▲	17	695	5 h - 6 h	Round trip



MONT OLIVINE

TRY AN OUTING DURING THE WINTER SEASON IN PARC NATIONAL DE LA GASPÉSIE!

A visit... of a quite different nature!

Discover the new snowshoe trail: *le sentier des Panaches*. Who wouldn't be thrilled by a snowshoe hike up *Mont Olivine* or a ski excursion to *Lac aux Américains*? Our trail network extends to *Mont Hog's Back*, *Mont Blanche-Lamontagne* and the *Champs de Mars* trails in the Chic-Chocs wildlife reserve.

You can do skiing and telemarking in the snowfields. However, inside the park you must stay on the authorised snowfields, such as the *Mur des Patrouilleurs* and the *Grande Cuve*. Going outside these zones or off the trails is prohibited to protect the area.

- DVC:** Discovery and Visitors Centre
- Easy:** Short distance and low vertical drop.
- Intermediate:** Moderate vertical drop or long distance.
- Difficult:** Significant vertical drop, technical trail through mountainous terrain, good physical condition, preparation and special equipment required, inappropriate areas for inexperienced skiers.



TYPES OF AVALANCHE PROBLEMS

By the Centre d'avalanche de la Haute-Gaspésie



CENTRE D'AVALANCHE
HAUTE-GASPÉSIE · QUÉBEC



You may have noticed that our avalanche forecasts now include one or more paragraphs addressing avalanche problems. Eight types of problems are described on the website www.centreavalanche.qc.ca. These eight types of instability are the main components of avalanche risk, each having its own particularities. To manage avalanche risk, a good understanding of the nature of these problems is essential. This document describes avalanche problems in detail, presenting the terrain, the destructive forces, the signs to recognize and the trigger points associated with each problem. Advice on managing these avalanche problems in the backcountry is also provided to help you develop good habits for travelling in the mountains.



www.facebook.com/centreavalanche



PARC NATIONAL DE LA GASPÉSIE

For information or reservations, call
1-866-665-6527 or 1-866-727-2427
Or go directly to the Discovery and Visitors
Services Centre located in the Mont Albert sector.

In case of an emergency, call 911.
Via satellite phone: 1-418-724-0171

Don't hesitate to consult our new Web site at
www.parcquebec.com for more information
about the Quebec park network.

The Park journal is published by *Parc national
de la Gaspésie (Parcs Québec)*, a park managed
by the *Société des établissements de plein air du
Québec (SÉPAQ)*.

Parc national de la Gaspésie director:
François Boulanger

Coordination: Pascal Lévesque

Texts: Pascal Lévesque, Claude Isabel
and François Boulanger.

Concept and graphic design: Audace

Translation and Revision: Hoff & Fortier

Photos: Denis Desjardins, Claude Isabel,
Pascal Lévesque, Marc l'Italien, François Boulanger,
Patrick Arsenault, Christian Lamontagne,
Jean-Pierre Huard, Mathieu Dupuis, André Desrosiers,
Alain Gagnon, Frédéric DeRoy, Philippe Henry,
Luc Rousseau, Archives nationales du Québec.

Printing: Solisco

Legal Deposit: 2012
Library and Archives Canada

ISSN 1927-999X (Print)
ISSN 1929-0004 (Online)

DISCOVER THE FONDS PARCS QUÉBEC COLLECTION AND DO YOUR PART FOR CONSERVATION!

One dollar will be donated to Fonds Parcs Québec for each item purchased.

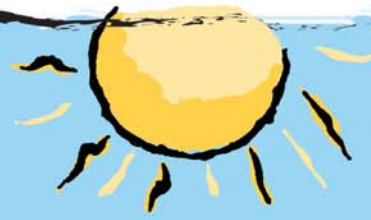
Donations to Fonds Parcs Québec serve to support the conservation of Québec's national parks. Through the funding of research, knowledge acquisition, and species population monitoring and inventory, vital data are obtained to particularly safeguard plant and animal species.

The collection is available at the Boutique Nature shop.

**BOUTIQUE
NATURE**
Parcs Québec

FONDS
Parcs Québec
fondsparcsquebec.com

HAVE FUN IN THE HAUTE-GASPÉSIE!



1. Éole Cap-Chat

- Guided tours
- The Nordais wind farm
- Tallest vertical axis wind turbine in the world

CAP-CHAT - 418 786-5719
www.eolecapchat.com



2. Valmont plein air

- River kayaking
- Moose safari
- Introduction to power kiting
- Cottages

CAP-CHAT - 418 786-1355
www.valmontpleinair.com



3. Exploramer

- Aquarium park and museum
- Sea excursions
- Explore the underwater shoreline
- Day camp

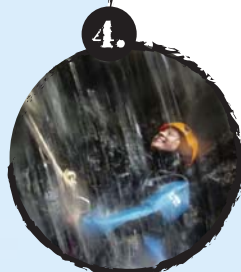
SAINTE-ANNE-DES-MONTS - 418 763-2500
www.exploramer.qc.ca



5. Vue du ciel

- Introductory tandem hang gliding flight
- Kite shop

MONT-SAINT-PIERRE - 418 797-2025
www.deltaplanetandem.ca



4. Eskamer aventure

- Canyoning
- Sea kayaking
- Professional guide

SAINTE-ANNE-DES-MONTS - 1 866 963-2999
www.eskamer.ca



Exploramer
La mer à découvrir • Discovering the sea



Visit one of the three **must-see attractions of the Gaspésie** and receive **10% off** on regular admission to the other two attractions.



**MUST-SEE
ATTRACTIONS**
Gaspésie

Photos: Louise Tanguay and Eric Marchand

Reford Gardens ONE OF THE WONDERS OF QUÉBEC SINCE 1962

- ✦ Historic Gardens, 3,000 species
- ✦ Imaginative and Interactive Gardens
- ✦ Elsie's Vegetable Garden
- ✦ Museum and Exhibitions
- ✦ Restaurants



jardins de métis
reford gardens

Grand-Métis • 418 775-2222
www.refordgardens.com

Photos: Eric Marchand and Sophie Jean



*The Bioparc...
The Gaspésie's wild
animal park*

- ✦ 40 indigenous animal species
- ✦ 70 plant species
- ✦ Insectarium
- ✦ Little Farm
- ✦ Seaside cottages
- ✦ Gift shop & restaurant

BIOPARC
DE LA GASPÉSIE

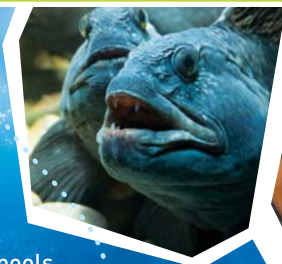
Bonaventure • 1 866 534-1997
www.bioparc.ca

Photos: Robert Baronet and Eric Marchand

DISCOVERING THE SEA



- ★ Aquarium park and touch pools
- ★ Café-terrace and boutique
- ★ Fish harvesting activity
- ★ Sea excursions
- ★ Smarter Seafood
- ★ Museum



Exploramer
La mer à découvrir • Discovering the sea

Sainte-Anne-des-Monts • 418 763-2500
www.exploramer.qc.ca

www.attraitsgaspesie.com



This document was printed on 100% recycled paper made in Québec, containing 100% post-consumption fibres and produced without using elementary chlorine. The inks used for this production contain vegetable oils.