

FIRE INSURANCE
DALE & COMPANY, LIMITED
 Tel. Marquette *6131
 Coristine Building

ENVELOPE
 MANUFACTURERS

PAPER
 MERCHANTS



MANUFACTURED BY

W. V. DAWSON
 LIMITED

993 St. Urbain St.
 MONTREAL

TELEPHONE
 LA. *2101

MUNICIPALITIES IN THE VICINITY OF MONTREAL

FOR NAMES OF RESIDENTS AND GUIDE TO STREETS—SEE STREET AND ALPHABETICAL DIRECTORIES.

MUNICIPALITES AUX ENVIRONS DE MONTREAL

POUR NOMS DE RESIDENTS ET GUIDE DES RUES—VOIR ANNUAIRE ALPHABETIQUE ET DES RUES

LACHINE

A City on the St. Lawrence nine miles from Montreal and on the Island of Montreal, county of Jacques-Cartier. It is the summer residence of many Montrealers and one of the most prosperous manufacturing centres of the Province of Quebec. Its works are numerous and thousands of men are employed yearly. Population, 27,200.

CORPORATION OF THE CITY OF LACHINE.

Mayor—Anatole Carignan
Treasurer and Director of Finance—Rene Laberge.
City Clerk—Emile Daoust.
Aldermen—Wm. A. Gilbery, Donat Cardinal, Fernand Dubreuil, Albert Stoucheau, Edward H. Connolly, and Adrien Trudeau.
Recorder's Court—J. A. Robillard K.C. recorder; Emile Deneault, clerk.
Filtration Plant and City Engineer—A. J. Deslauriers
Health Officer—Dr. Albin Jeannotte.
Chief of Police Department—Frank Pitre
Chief of Fire Department—Angus Mickie.
City Assessor's Department—U. T. Benoit president.
Catholic School Commission—City of Lachine, Rev. Alme Boileau, chairman; Leonide Lefebvre, Wilfrid Daoust, Eustache Charron, Joseph Fillion, commissioners; Albert St. Denis, secretary; Parish of St. Sacrament, Rev. Albert Garipey, chairman; Emile Legault, Henri Picard, Daniel Lefebvre and Leopold Lalande, commissioners; Emile Daoust, sec.-treas.
Protestant School Commission—R. S. Tuer, chairman; L. V. Brooks, Professor F. M. Wood; A. W. Stinson, J. Pitcairn, W. A. Bayner, commissioners; Miss V. Vernon, sec.-treas.

LONGUEUIL

(Incorporated 1874).

A City situated on the south shore of the St. Lawrence River, county of Chambly. Distant from St. Lambert 3 miles, from Montreal 2 miles from shore to shore, and 6 miles by rail; 8 miles from Boucherville and 10 miles from Chambly. Mail delivered twice a day. Buses operated by the Montreal Tramways Co connect the city with Montreal. Population, 8,527.

CORPORATION OF THE CITY OF LONGUEUIL

Mayor—Paul Pratt.
Aldermen—Paul Carriere, Cyprien Ste-Marie, Dr. Pierre Jodoin and Lionel Cardinal.
City Manager—E. Vezina, I.C.
Secretary-Treasurer—J. A. Prefontaine
Assessors' Department—E. Vezina, I. C., president.
Legal Department—Phillippe Lamerie, legal adviser.
Police and Fire Department—Jules Brosard, chief.
Health Department—Dr. A. Lamothe medical officer.
Public Works—Alex David, foreman.
Water Works Department—Hector Leclerc superintendent, H. T. Gilmore, assistant.
Recorder—Liguori Hebert, K.C.

COMMITTEES.

Finance—Paul Carriere, chairman.
Water Works and Lights—Lionel Cardinal, chairman.
Police, Fire and Health—Dr. Pierre Jodoin, chairman.
Public Works—Cyprien Ste-Marie.

MONTREAL (CITY OF)

See City of Montreal pages 950-951.

MONTREAL EAST.

(Incorporated 1910)

Adjoining Mercier ward, City of Montreal, in County of Hochelaga. The most important industries of Montreal East are that of cement, oil refineries and oil-storage tanks, copper refineries and extensive yards of C. N. R. Bus service operates from George V

and Notre Dame East throughout the town. 5.5 miles distant from Place d'Armes square, Montreal. Population about 3,500.

CORPORATION

Mayor—Napoleon Courtemanche.
Aldermen—Eizear Fournier, Henri Leroux, Adelard Rivet, Edmond Robin and Hormisdas Quintal.
Town Clerk—Joseph Legris
Treasurer—Albert Hetu.
Town Manager—J. Ernest Courtemanche.
Chief Accountant—Raoul Chenier.
Town Hall—11270 Notre Dame St.
Assessors' Department—J. N. Langeller, president; Leger Dussault, Charles Bourassa, Charles David, Cyrille Durocher, assessors; J. E. Courtemanche, sec.
Legal Department—Vien and Faribault, legal advisers.
Police and Fire Departments—Liguori Barbier, chief.
Health Department—Dr. D. R. Bisson, medical officer.
Public Works—Raoul Tiernan, foreman
Engineer—Henri Gauthier, I.C.
Building Inspector—J. E. Courtemanche.
Recorder—Rene Lippe.

COMMITTEES

Finance—Henri Leroux, chairman.
Public Works—Adelard Rivet, chairman.
Police and Fire—Eizear Fournier, chairman.
Public Buildings and Parks—Hormisdas Quintal.
Health—Edmond Robin.
AUDITOR
 Victor Pelletier, C.P.A.

MONTREAL SOUTH

A Town on the south shore of the River St. Lawrence adjoining Longueuil and one mile from St. Lambert Station, County of Chambly.

The Montreal & Southern Counties Electric Railway (now operated by the Canadian National Railways) gives the residents a 20-minute service with Montreal via Victoria Bridge, and buses, operated by the Montreal Tramways Co., connect with Montreal via the Jacques Cartier Bridge.

The Jacques Cartier Bridge over the St. Lawrence river ends in the centre of the town.

There are three churches, Catholic, United and Anglican, a Town Hall and three schools, including the English High School of Montreal South and Longueuil. Population, about 2000.

MUNICIPAL COUNCIL.

Mayor—R. G. Keers.
Alderman—O. Cyr, A. Russell, L. Ledoux, R. Gascoigne C. Lord and E. Rushton.
Fire Chief—L. Favreau.
Secretary-Treasurer—P. H. Anderson.
Recorder—J. C. Savage.
School Commissioners of Catholic Board—O. Cyr, Jos. Cayouette, Alderic Chevalier, Prime Lord, Trefle Brazeau, Clement Patenaude, sec.-treas.
School Commissioners of Protestant Board—D. Pollock, chairman, T. Gregson, Chas. J. Harrod, H. T. Palmer, T. V. Battersby, commissioners; Harold B. Lee, sec.-treas.

MONTREAL WEST

(Incorporated as a Town, 1897).

This beautiful suburb, in the County of Hochelaga, is easy of access and is in great favor for residential building. Trains connect with the City at almost all hours both by the Canadian Pacific and Canadian National Railways, while the Upper Lachine and Sherbrooke Boulevard roads afford delightful drives. The Montreal Tramways Co cuts through the lower part of the Town affording a 20-minute service with the city, and enters the Town by the Sherbrooke Boulevard with a 6 minute service. There is also a frequent motor bus service between Montreal West and La-

chine, operated by the Montreal Tramways Company. Public and high schools and a post office with postal delivery twice a day. Population about 250.

CORPORATION OF MONTREAL WEST

Mayor—R. H. Ross.
Secretary-treasurer—Chas. I. Fraser.
Commissioners—D. J. S. Tyrer, A. S. Booth, G. H. Brain, G. W. Hodgson.
BOARD OF SCHOOL COMMISSIONERS (MUNICIPALITY OF COTEAU ST. PIERRE)
Chairman—C. W. Bark.
Commissioners—Mrs. E. A. Leslie, W. H. Patterson, P. Wright, J. White.

OUTREMONT

(Incorporated in 1875.)

A City situated near the west end of Mt. Royal Park, forming part of the parish of Montreal, county of Hochelaga. It is bounded on the east by Laurier and St. Michael wards, on the north by St. John ward and Town of Mount Royal, on the west by Mount Royal ward. Two electric car service routes are provided by the Montreal Tramways Co. (Laurier av., St. Catherine rd. and Bellingham rd. for southern section; Bernard av., Outremont av. and Van Horne av. for northern section). A two and a half and five minute service is provided on each route, also autobus service on Bernard av. and Bonjevard Mont Royal (its whole length) to Montreal Tramways terminus. The city contains seven very fine schools, four Catholic (College Stanislas, Quebec Academy, St. Germain Academy and LaJole School) three Protestant (Strathcona Academy, Alfred Joyce and Guy Drummond public schools) and three large convents, a City Hall and the Outremont Curling, Tennis and Bowling Clubs, Municipal Tennis, Shuffleboard Courts, Skating Rinks and Toboggan Slides. A municipal plant lights the city with electric light. It has an ample water supply, a thorough system of drainage, and an efficient police and fire brigade is maintained for the protection of the city. Easy of access from the City of Montreal (centre) no finer suburb can be found. Population, 31,678.

CORPORATION OF OUTREMONT

Mayor—Joseph Beaubien.
Aldermen—Alphonse Belanger, C. E. Eugene Maynard, J. D. Hudson, Romuald Bourque, Owen J. Callary, S. A. Acheson, Hon. Senator E. Beaugard, K.C., John S. Astbury, M.A., LL.D. and E. C. Vidécaire.
City Solicitor—Hon. C. P. Beaubien, K.C.
City Auditors—Sharp, Milne & Co.
City Clerk and Treasurer—Ernest T. Sampson, F.I.M.T.A.
City Engineer and Manager—Emile LaCroix, B.A.Sc.
Building Inspector—Emile Lacroix, B.A.Sc.
Chief of Police—J. Griffith.
Chief of Fire—M. F. Nolan.
Medical Health Officer—E. R. Dufresne, M.D.
Recorder—Rene Lippe.

ST. LAMBERT.

A City on the south shore of the St. Lawrence, directly opposite Montreal two miles from the centre of the city, in the county of Chambly, district of Montreal. The electric car service is operated by the M. & S. C. Ry. There is also an excellent train service by the Canadian National Railways. The Jacques-Cartier Bridge over the St. Lawrence to the South Shore is only a short distance from the limits of St. Lambert. Population, 7,000.

MUNICIPAL COUNCIL.

Mayor—C. A. Comeau.
Aldermen—H. G. Gonthier, G. E. McFadyen, P. J. Rellis, E. J. Waite, H. R. DuSault, N. H. Simms.
Manager—M. J. Rutledge, B.Sc.
Chief of Police—J. R. Macdonald.

Supt. of Water Works—A. Le Royer.
Recorder—Aug. Angers, K.C.
Catholic School Board—C. A. Comeau, president; A. R. Gravel, Henri Roy, Paul-Hallargeon, sec-treas.
Protestant Board of School Commissioners—Rev. J. D. McCrae, chairman; Chas. Jackets, H. H. Vroom, G. Collier, H. H. Cook, W. R. Watt, H. K. G. Clack, sec-treas.
Board of Health—Mayor and Aldermen.
Medical Health Official—J. R. Oulton, M.D.
Chief Assessor—R. G. Heugban.
Food Inspector—R. M. Levert, V.S.

TOWN OF HAMPSTEAD

A Town adjoining Notre Dame de Grace ward of the City of Montreal, from which it is separated on the south by Cote St. Luke Road, and on the east by Macdonald av. Queen Mary road is the stopping point for Hampstead, which lies three blocks west along Queen Mary road. The Snowdon junction stop on the Cartierville line lies five blocks east of Hampstead. Queen Mary road leads right into the town.

Hampstead is a beautifully laid out garden town, and has very rigid building restrictions. Population about 2,600.

CORPORATION OF THE TOWN OF HAMPSTEAD.

Mayor—H. G. Parsons.
Aldermen—L. I. Playfair, E. M. Scully, A. E. Pierce, J. A. Loy and J. C. Kenkel.
Board of School Commissioners—A. I. Smith, chairman; V. B. Van Wart, Dr. R. S. Jane, Mrs. Marion Byers and E. B. Plant.
Manager—K. G. Cameron.
Sec-Treas.—C. G. Leavitt.
Chief of Police—Arthur Harris
Recorder—J. J. Harold.
Deputy Recorder—A. I. Smith.

TOWN OF MOUNT ROYAL THE MODEL CITY

Eight minutes from the heart of Montreal via the electrically-operated Tunnel of the Canadian National Railways, lying on the northwest slope of Mount Royal and adjoining the cities of Montreal and Outremont.

The Town is conveniently reached by automobile from Outremont by following St. Catherine road to Rockland avenue, crossing the Canadian Pacific Railway tracks. The Town of Mount Royal's territory commences at this point. To the westward it can be reached by Cote des Neiges rd which is the continuation of Guy street.

Montreal Tramway buses (corner Queen Mary rd. and Cote des Neiges) cross the Town of Mount Royal to Park av. and Jean Talon with a ten-minute service.

Education—For Protestant and Catholic School purposes the territory of the Town of Mount Royal has been created into a separate school district. The School Commissioners have built a fire-proof two-story and basement school, built of brick and re-inforced concrete where elementary and high school grades are taught. A new fireproof school has been built to accommodate the first four grades. The classes are conducted by teachers of high scholastic degree. The Catholic education is taken care of by a new Catholic school, modern in every detail. Population about 8,000.

School enrolment for both schools 1,200 pupils

CORPORATION

Mayor—R. E. Schofield.
Aldermen—J. H. Asselin, J. G. Cavanagh, J. P. E. Collette, L. E. Lister, C. T. Russell.
Manager—Walter MacNeil.
Sec-Treasurer—D. W. Lough.
Engineer—A. M. Hamilton.
Police Dept.—George Elliott, chief.
Board of Protestant School Commissioners—H. F. Finnemore, Chairman; Mrs. R. C. Dickinson, Rev. E. A. Findlay, R. C. Pitton, J. J. H. Miller, commissioners; Mrs. W. P. Hodges, secretary-treasurer.
Board of Catholic School Commissioners—Alme Lacroix, chairman; Lucien LaGoucheur, Dr. Roland Decarie, Leonard Hynes L. Julien, commissioners; Adrien Perrault, secretary-treasurer.
Town Office 1020 Laird Blvd, Town of Mount Royal

VERDUN

The City of Verdun is ideally located at the south-western limits of Montreal on the banks of the St. Lawrence River, which is about 8 miles wide at this point. The municipality was incorporated as a village under

the name of Riviere St. Pierre in 1874, changed to the Village of Verdun in 1875, erected into a Town in 1907 and a City in 1912. Since 1901 its population has increased from 1898 to 72,845. Possessing very few industries it is almost entirely composed of homes and stores. Its famous boardwalk is now being replaced by a modern asphalt promenade, brilliantly lighted, along the entire three-mile river front, and banked with attractive lawns and shrubbery. Municipal tennis courts, a bowling green and a dance pavilion are also situated here. In addition a very modern Municipal Auditorium and Hockey Arena seating 4,500, as well as two magnificent open air municipal swimming pools, both on the river front.

Great success has been achieved in the building of homes under the National Housing Act, the City offering suitable lots for sale at very low prices. On this plan a small model village is being constructed.

Educational facilities are excellent, with thirteen Catholic and eight Protestant schools. There are two hospitals and eighteen churches. Public services such as health, police, water and electricity are of the best. Through its Municipal Playgrounds Commission the City Council gives special attention to providing and supervising playgrounds for children, and new areas are continually being designated for this purpose.

A comprehensive juvenile library is also operated by the City.

The form of civil government consists of a mayor and eight aldermen elected every three years. The City Manager System has been in force since 1938. Population 74,087.

CORPORATION.

City Hall—475 Church avenue.
Mayor—Edward Wilson.
Aldermen—D. Hebert, H. L. Poirier, A. Gauthier, G. Cool, J. A. Soullere, P. Quinn, G. T. Brown and T. A. B. Wilcox.
General Manager, Director of Finance and Treasurer—J. R. French.
City Clerk—A. J. Burgess.
City Engineer—Henry Hadley, C. E.
Superintendent of Works—A. Lefort.
Director of Police—Pierre Gatineau.
Director of Fire—Raoul Pronix.
Municipal Playgrounds Commission—Ald. G. T. Brown, chairman.
Medical Health Officer—A. D. Archambault, M. D.
Food Inspector—Dr. Geo. Etienne.
Legal Advisor—Francis Fanteux, K.C.
Recorder—E. Desjarlais, K.C.
Auditor—L. D. Viau, C.A.

VILLE LaSALLE

A Town on the North Shore of the River St. Lawrence, situated between Verdun and the City of Lachine, directly connected with Montreal West and Ville St. Pierre on the north. In Jacques Cartier County.

The Town Hall is located at No. 12 Strathroy av. Council meets on second Wednesday of each month. Fire and police departments are located at 8745 La Salle Blvd., Ville La Salle. The C. P. R., N. Y. C. and Delaware & Hudson R. R. Co., supply service, "La Salle" being the name of the Railway Station. Population, 6,700.

CORPORATION OF THE TOWN OF LaSALLE

Mayor—J. Anatole Leroux.
Aldermen—Ern. J. Hayward, B. T. Clement, Albert Boivin, Wellie Larente, Albert Perras and Alf Lefevre.
Secretary-Treasurer—Alb Gravel.
Engineer—Athanase Latour.
Chief of Police and Fire—Daniel Demers
Health Dept.—Maurice Lacharite, M.D.
Recorder—Jacques Belque

VILLE ST. LAURENT

A thriving Town and parish in Jacques Cartier County on the island of Montreal and on the C.N.R., 4 miles from Montreal. The Montreal Tramways Co. runs electric car and bus service between here and Montreal at 8-minute intervals day and night. Population about 9,292.

CORPORATION

Mayor—Edouard Gohier.
Town Clerk—Henri Lapointe.
Treasurer—David Rochon.
Assistant-Treasurer—Robert Valade.
Superintendent—R. Lecavallier.
Town Engineer—Jean Dussault.
Aldermen—East Ward, L. C. Harris, J. Frs. Belanger, Roland Mantha; West Ward, Paul-Emile Laperriere, Maurice Cousineau, J. Henry Petit.

VILLE ST. PIERRE

The Town is situated on the north side of the Lachine Canal, between the City of Lachine and the Town of Montreal West, in Jacques Cartier County, being traversed by the C.N.R. and the C.P.R., and having a twenty minute service to the heart of the City of Montreal by the Montreal Tramways Co. Population, 4,568.

CORPORATION

Mayor—C. A. Kirkland, M.D., M.P.P.
Aldermen—Joseph Laurin, Auguste Brossolt, Lucien Rochon, Richard Scott, G. Towstak, J. E. Fournier.

Sec-Treas.—F. H. Malo.

Asst. Sec-Treas.—Miss C. Gadoury.

School Commissioners—Donat Boyer, president, councillors, Gerard Ouellette, Auguste Brossolt, Lucien Rochon, Arin, Chénier, Donat Boyer; H. F. Malo, sec-treas., Com. Schol.

Fire & Police Chief—Eugene Lavallee.

WESTMOUNT

The City of Westmount is beautifully situated on the western slope of Mount Royal, and from the upper level a magnificent view of the St. Lawrence River, Lake St. Louis and surrounding country is obtained. The city is almost exclusively residential and may be designated a "city of homes." The city is governed by a mayor and five aldermen, elected for a term of two years by the city at large. The city manager form of government has been in vogue for 33 years, and the city's progress is evidence of the wisdom of the adoption of this system of government.

The city owns and operates in a very efficient manner an electric light and power plant and garbage destructor plant.

Park and playground spaces owned by the city cover an area of about 119 acres equal to 12 per cent of the total area of the city.

Many municipal tennis courts are in great demand during the summer months and every facility is given for the enjoyment of winter sports.

The Westmount Athletic Grounds on St. Catherine Street, containing an area of 7.8 acres, are leased to the Dept. of National Defence.

The city owns a free public library. During the year 194,282 volumes were circulated for home use.

The Victoria Hall as a community centre is continually in use for church, charitable, educational, fraternal, municipal, political and social activities.

Public education is provided by the school commissioners of Westmount and the school commission of St. Leon de Westmount. In addition there are a number of private schools.

The city is supplied with filtered water and a 98 per cent efficiency is required. The water is regularly tested to assure that a maximum of purity is maintained. Population about 25,376.

CORPORATION.

City Hall—Sherbrooke W. cor Argyle av.
Mayor—R. P. Adams.

Aldermen—W. S. Greene, commissioner of finance; W. F. MacKlalar, K.C., commissioner of roads and municipal buildings; G. L. Fowler, commissioners of electric light and power, health and public welfare; R. D. Harkness, commissioner of police and fire; J. Senecal, commissioner of parks.

City Clerk & Treasurer's Dept.—C. W. Houston, secretary-treasurer; A. W. D. Swan, assistant secretary-treasurer; A. R. Bourdon, city accountant; J. W. Webber, K.C., city solicitor; Macintosh, Robertson & Paterson, C.A., Auditors.

Board of Assessors—Major J. Colin Kemp, chairman; Donald Baillie and A. S. Rutherford.

General Manager & City Engineer—P. E. Jarman.

Asst. General Manager—Thos. J. Hughes.
Roads Dept—P. G. Delgado, supt of Public Works

Electric Light Dept—E. P. Brown, supt.

Police Dept—R. Byford, chief.

Recorder's Court—Chas. A. Hale, K.C., recorder; A. C. Laverly, deputy.

Fire Dept—W. Cobb, chief.

Health Dept—Dr. J. J. Day, medical health officer.

Parks and Playgrounds—E. J. Anderson, superintendent.

Library—Miss Kathleen Jenkins, librarian; reference librarian; Miss R. G. McEwen, children's librarian.

Library Trustees—C. M. McKergow, chairman; A. M. McMaster, W. B. Scott.

EWING'S GARDEN FARM & FLOWER SEEDS

CATALOGUES
SENT FREE

THE Wm. EWING CO. LIMITED Seed Merchants

Shop & Office:

412 to 414

McGill Street

Plateau 2922

LEWIS, APEDAILE AND HANSON Incorporated Insurance Brokers EVERYTHING in INSURANCE

Representing
PALATINE INSURANCE
CO., LIMITED

BRITISH
NORTHWESTERN
FIRE INSURANCE CO.

GLENS FALLS
INSURANCE CO.

PHOENIX ASSURANCE
COMPANY, LIMITED
UNION ASSURANCE
SOCIETY

LONDON & COUNTY
INS. CO., LTD.
MICHIGAN FIRE &
MARINE INS. CO.

LEWIS BLDG.
465 St. John St.
Tels. Marq. 7501-2-3

WHY ADVERTISING IN LOVELL'S MONTREAL DIRECTORY PAYS

YOU men who spend large amounts of money on creative advertising— who when you think of advertising, think *ONLY* of creative advertising—
A word with you.

When you invest a dollar you protect that dollar to the utmost.

What are you doing to protect the money you invest in creative advertising ?

The morning paper that lies before you on your breakfast table has in it an advertisement that cost you many dollars. This same paper has the day of the month printed at the top of each page, twice on each sheet; where everyone can easily read it.

You saw the date.

But when you reached the office, sat down at your desk, and wanted the day of the month, YOU REFERRED TO YOUR CALENDAR, and a dozen times that day you referred to your calendar. Your employees did the same. The whole business world did likewise.

Why ?

The public will see your creative advertisement.

But when they want your goods — THEY WILL TURN TO LOVELL'S MONTREAL BUSINESS DIRECTORY AT THE END OF THIS BOOK— just as you turned to your calendar.

Protect that money you are putting into creative advertising.

Protect it with REFERENCE advertising in LOVELL'S MONTREAL DIRECTORY.

A small percentage of the amount you spend for creative advertising WILL DO IT.

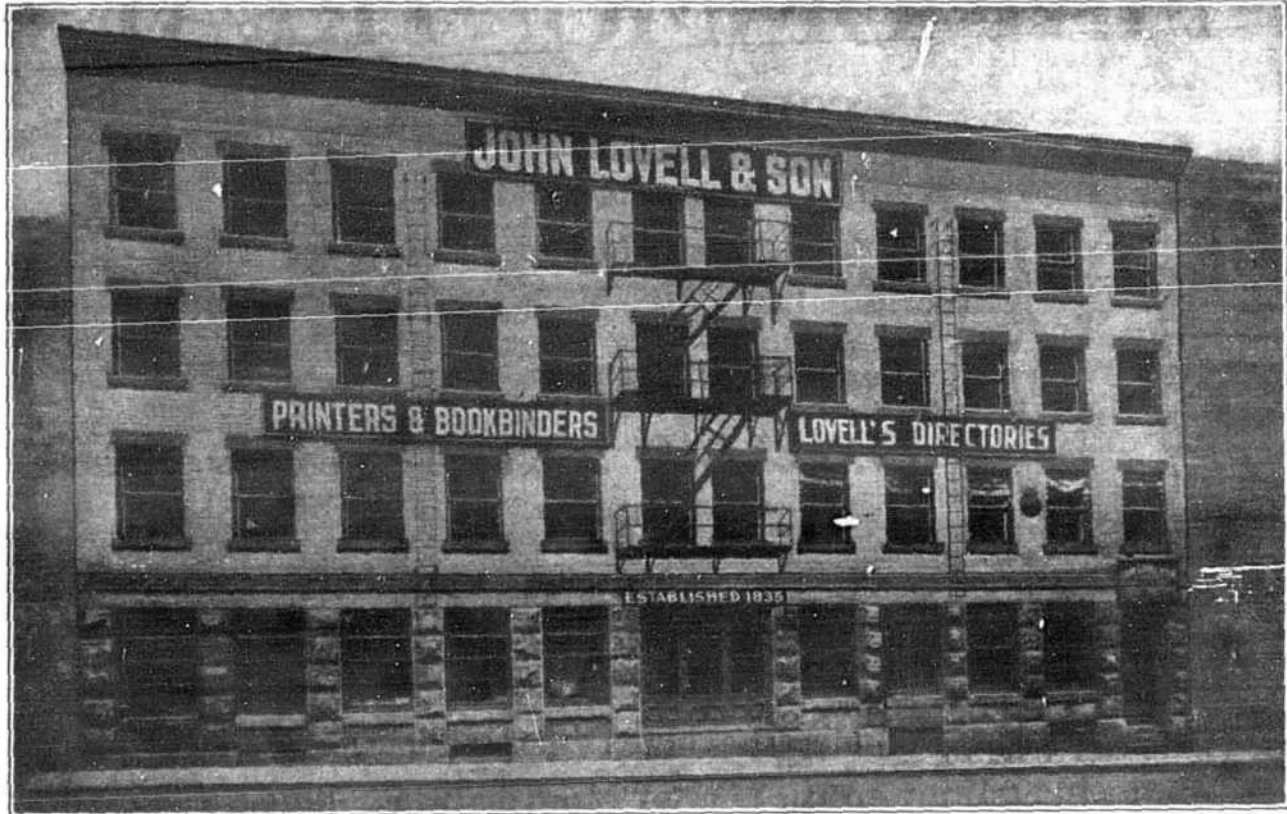
LET US TALK IT OVER WITH YOU

Call our Advertising Department

Phone MARquette *2321

JOHN LOVELL & SON LIMITED

ESTABLISHED 1835



Publishers-Printers-Bookbinders

CATALOGUES, PRICE LISTS, MAGAZINES, FOLDERS,
BOOKLETS, REPORTS, FINANCIAL, RAILWAY,
STEAMSHIP, COMMERCIAL & INSURANCE WORK

ALSO EQUIPPED FOR MONTHLY MAGAZINE & EDITION WORK

TELEPHONE
MARquette 2321

423-429 ST. NICHOLAS STREET, MONTREAL

5250

LOVELL'S MAP OF MONTREAL

IN COLOR—SIZE 48" x 36"

Parks and Playgrounds, Prominent Buildings, Clubs, etc., shown.
Also Railway and Street Car Lines and intersecting
street numbers on main thoroughfares.

PUBLISHED BY

JOHN LOVELL & SON, LIMITED

ESTABLISHED 1835

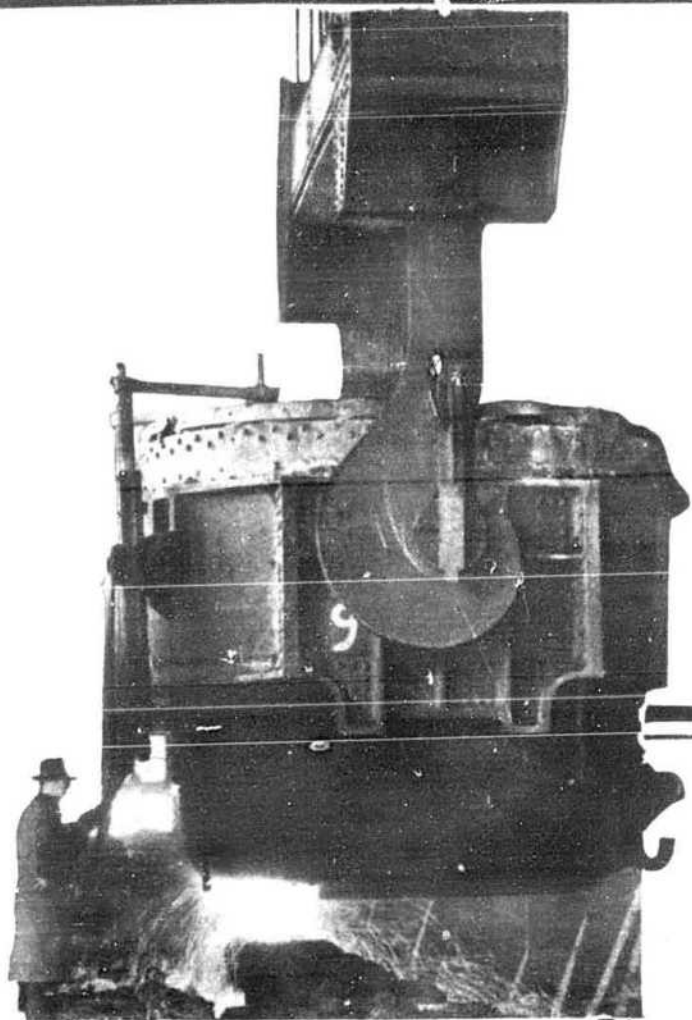
THIS MAP covers Montreal from Bout de l'Isle northwest to and including Ahuntsic, Cartierville and Ville St. Laurent, and west to and including Lachine, Ville St. Pierre and Montreal West. In addition to the City of Montreal the following places are shown: — Westmount, Verdun, Outremont, Montreal West, Montreal East, Lachine, Ville St. Pierre, Cote St. Luc, Ville St. Laurent, Ville La Salle, Town of Hampstead, Town of Mount Royal, Laval de Montreal (Bout de l'Isle), Pointe aux Trembles, Montreal North, Ville St. Michel, St. Leonard de Port Maurice.

Price \$1.00 per copy, folded, on paper

PLUS SALES TAX

Copies may be obtained mounted on wallboard or linen with rollers.

Complete Index, in book form, of Streets, etc., supplied with
each Map.



STEEL PRODUCTS

Made in our own plants and quality-controlled through every operation. Stelco Products cover the widest steel needs. Listings give a good idea of diversification but owing to space limitations many sub-classifications are not shown. The Stelco Office or Representative nearest you can give full information. Write for Catalogues.

THE STEEL COMPANY OF CANADA, LIMITED

HAMILTON MONTREAL

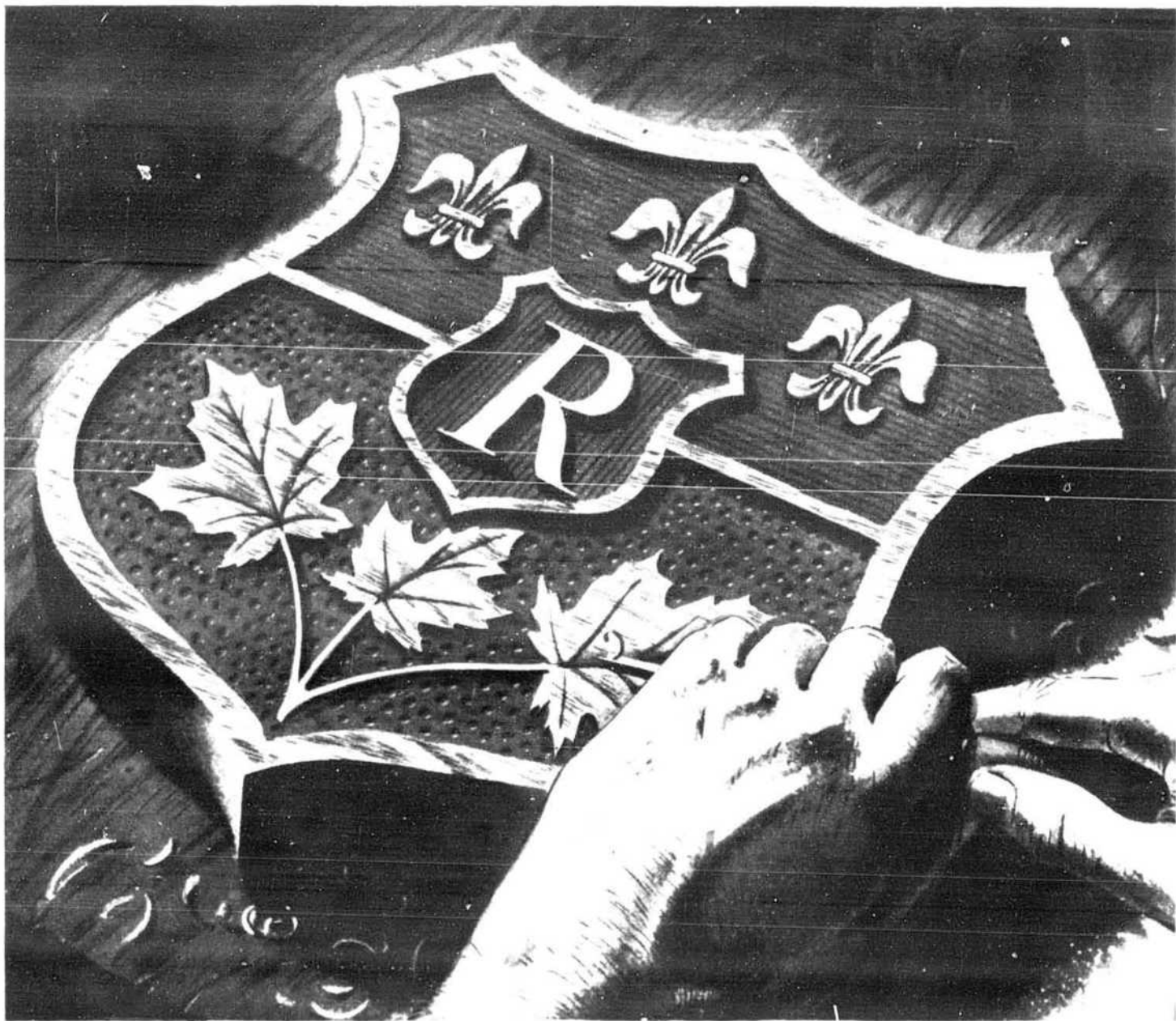
Sales Offices: Halifax, Saint John, Ottawa, Toronto, London, Windsor, Winnipeg, Vancouver. Works: Hamilton, Toronto, Brantford, Gananoque, Montreal, Lachine.

BRITISH AND FOREIGN REPRESENTATIVES

United Kingdom and Europe: A. H. Robertson, 4 Broad Street Place, London, E.C. 2, England. Australia: Hugh Scott-Young, P.O. Box 1031, Melbourne; S. F. Seargent, 17 George St., Redfern, Sydney, New South Wales. Bahamas: Mrs. M. V. Roberts, P.O. Box 586, Nassau. Barbados: J. A. Marson & Son, Bridgetown. Bermuda: Ambard & Company, Hamilton. British Guiana: S. Davson & Co. Ltd., New Amsterdam, Berbice and Georgetown, Demerara. Dominica: A. C. Shillingford & Company, Roseau. Jamaica: Canadian Agencies Limited, Kingston. Newfoundland: J. C. Pratt & Company, St. John's. New Zealand: Th. de Schryver Ltd., Auckland. South Africa: C. F. Shaw Ltd, Johannesburg. Transvaal, S.A. Trinidad: Spencer J. Kirton, Ltd., Port-of-Spain.

- COKE • COKE BY-PRODUCTS • PIG IRON
- SEMI-FINISHED STEEL
- ROLLED PRODUCTS
 - Merchant Bars • Angles
 - Reinforcing Bars • Spring Steel • Alloy Steel
- SHEETS
 - Galvanized • Galvannealed
 - Vitreous Enamelling • Copper Bearing
- HEAVY STEEL PLATES
 - Boiler • Circles • Firebox • Flange
 - Locomotive • Sheared • Ship • Sketch
 - Structural • Tank • Universal
- STEEL STRIP • TIN PLATE
- TRACK FASTENINGS • DROP FORGINGS
- BOLTS AND NUTS
 - Machine • Carriage • Stove • Lag
 - Blank & Tapped Nuts • Lock Nuts
- RIVETS • SPIKES • WASHERS
- POLE LINE HARDWARE
- STEEL PIPE
 - Black and Galvanized
 - Couplings • Nipples
- FENCING AND ACCESSORIES
 - Farm • Chain Link • Lawn • Posts • Gates
- WIRE
 - Heavy and Fine • Rope • Spring
 - Hot Galvanized • "Zinc Tight" Galvanized (Electro)
 - Barbed • Welding • Shaped
- AIRCRAFT FASTENINGS
- NAILS • STAPLES • TACKS
- WOOD, MACHINE AND SHEET METAL SCREWS
 - Slot Head • Socket Head • Recessed Head
- COTTER PINS • HORSE SHOES
- TOE AND HEEL CALKS • STEEL HOOPS

TRUE TO THE HIGHEST TRADITIONS OF FINE PAPERMAKING



**SUPERFINE LINEN
RECORD**

Canada's finest bond paper, owes its time-defying strength and beauty to its 100% new rag content. Yet it costs but a fraction of a cent more per letter than the cheapest bond. Your printer, lithographer or engraver will be pleased to produce your stationery on this superfine Rolland paper.

IN the family of papers which bear the "R" Shield watermark are types for every business purpose. Some, like Superfine Linen Record, are supreme examples of the papermaking craft; others are "service" papers for routine tasks.

But all are true to the Rolland tradition—all meet the most critical tests of their fitness to fulfill their appointed purpose in their appointed price class.

ROLLAND PAPER
COMPANY LIMITED

High Grade Paper Makers since 1882
MONTREAL, QUE.



BRANCH OFFICE: TORONTO, ONT. • MILLS AT ST. JEROME, QUE. AND MONT ROLLAND, QUE.