

# MUNICIPALITIES IN THE VICINITY OF MONTREAL

FOR NAMES OF RESIDENTS AND GUIDE TO STREETS—SEE STREET AND ALPHABETICAL DIRECTORIES.

# MUNICIPALITÉS AUX ENVIRONS DE MONTRÉAL

POUR NOMS DE RESIDENTS ET GUIDE DES RUES—VOIR ANNUAIRE ALPHABETIQUE ET DES RUES

## LACHINE

A City on the St. Lawrence nine miles from Montreal and on the Island of Montreal, county of Jacques-Cartier. It is the summer residence of many Montrealers and one of the most prosperous manufacturing centres of the Province of Quebec. Its works are numerous and thousands of men are employed yearly. Population 28,800 (1949).

### CORPORATION OF THE CITY OF LACHINE.

*Mayor*—Anatole Carignan

*Treasurer and Director of Finance*—Rene Laberge.

*City Clerk*—Emile Daoust.

*Aldermen*—Wm. A. Gillyber, Donat Cardinal, J. George Chabise, John Linford, Edward H. Connolly and Daniel Lefebvre.

*Recorder's Court*—Jacques Viau, recorder; Emile Deneault, clerk.

*Filtration Plant and City Engineer*—A J Deslauriers

*Health Officer*—Dr. G. Valois.

*Chief of Police Department*—Frank Pitre

*Chief of Fire Department*—Angus Mickie.

*City Assessor's Department*—U T Benoit president.

*Catholic School Commission*—City of Lachine, Monsignor Aime Bolleau, chairman; Jacques Viau, Robert Hepworth, Eustache Charron, Joseph Fillon, commissioners; Albert St Denis, secretary; Parish of St. Sacrament, Rev. Paul Jarry, chairman; Pierre Cardinal, Henri Picard, Daniel Lefebvre and Leopold Lalande, commissioners; Emile Daoust, sec-treas.

*Protestant School Commission*—J Pitcairn, chairman; R. M. Davidson, A. W. Stinson, W. A. Bayne, Leslie Keller, K. D. Sheldrick, commissioners; Mrs. V. Dixon, sec-treas.

## LONGUEUIL

(Incorporated 1874).

A City situated on the south shore of the St. Lawrence River, county of Chambly. Distant from St. Lambert 3 miles, from Montreal 2 miles from shore to shore, and 6 miles by rail; 8 miles from Boucherville and 10 miles from Chambly. Mail delivered twice a day. Buses operated by the Montreal Tramways Co connect the city with Montreal. Population, 10,117.

### CORPORATION OF THE CITY OF LONGUEUIL

*Mayor*—Paul Pratt.

*Aldermen*—Clovis Lareau, Dr. J Aime Dus-sault, Alex. Tremblay, Lionel Cardinal.

*Secretary-Treasurer*—Paul Gagnon.

*Assessors' Department*—

*Legal Department*—Philippe Lamarre, legal adviser.

*Police and Fire Department*—Jules Bros-sard, chief.

*Public Works*—Hector Leclerc, director.

*Water Works Department*—Paul Gouin, superintendent.

*Recorder*—Liguori Hebert, K.C.

### COMMITTEES.

*Finance*—Lionel Cardinal.

*Water Works and Lights*—Clovis Larrau, chairman.

*Police, Fire and Health*—Dr. J. A. Dus-sault, chairman.

*Public Works*—Alex. Tremblay.

## MONTREAL (CITY OF)

See City of Montreal pages 823-824.

## MONTREAL EAST.

(Incorporated 1910)

Adjoining Mercier ward, City of Montreal, in County of Hochelaga. The most important industries of Montreal East are that of cement, oil refineries and oil-storage tanks, copper refineries and extensive yards of C N R. Bus service operates from George V and Notre Dame East throughout the town. 3.5 miles distant from Place d'Armes square, Montreal. Population about 5,000.

### CORPORATION

*Mayor*—Napoleon Courtemanche.

*Aldermen*—Elzear Fournier, Henri Leroux, Adelard Rivet, Edmond Robin and Hormisdas Quintal.

*Town Clerk*—Joseph Legris

*Treasurer*—Albert Hetu.

*Town Manager*—J Ernest Courtemanche.

*Chief Accountant*—Raoul Chenier.

*Town Hall*—11370 Notre Dame St.

*Assessors' Department*—J. N. Langeller, president; Leger Dussault, Charles Bour-rassa, Charles David, Cyrille Durocher, J. E. Courtemanche, assessors; J. Legris, sec.

*Legal Department*—Vien and Taillefer, legal advisers.

*Police and Fire Departments*—Liguori Bar-ber, chief.

*Health Department*—Dr. D. R. Bisson, medical officer.

*Public Works*—Raoul Tiernan, director; O. Landry, foreman.

*Engineer*—Henri Gauthier, I.C.

*Building Inspector*—J E Courtemanche.

*Recorder*—Jean Paul Renaud.

### COMMITTEES

*Finance*—Henri Leroux, chairman.

*Public Works*—Adelard Rivet, chairman.

*Police and Fire*—Elzear Fournier, chair-man.

*Public Buildings and Parks*—Hormisdas Quintal.

*Health*—Edmond Robin.

### AUDITOR

Victor Pelletier, C.P.A.

## MONTREAL SOUTH

A Town on the south shore of the River St. Lawrence adjoining Longueuil and one mile from St. Lambert Station, County of Chambly.

The Montreal & Southern Counties Electric Railway (now operated by the Canadian National Railways) gives the residents a 20-minute service with Montreal via Victoria Bridge, and buses, operated by the Montreal Tramways Co., connect with Montreal via the Jacques Cartier Bridge.

The Jacques Cartier Bridge over the St. Lawrence river ends in the centre of the town.

There are three churches, Catholic, United and Anglican, a Town Hall and two schools. Additional bus services operated by Laval Transport Co. and Chambly Transport Co. with connection to St. Catherine and Papineau Sts., every 20 minutes. Population: 3,000.

### MUNICIPAL COUNCIL

*Mayor*—Aime Lefebvre.

*Aldermen*—C. J. Carlsen, R. Lord, E. La-voie, A. Southart, H. Juniper, A. Rioux.

*Secretary-Treasurer*—Y. Saurette.

*Police and Fire Chief*—W. Blanchette.

*Recorder*—C. H. Macnaughten.

*School Commissioners of Catholic Board*—

E. Richer, president; A. Tardif, M.D., A. Chevallier, A. Brosseau, and H. Patry, commissioners.

*School Commissioners of Protestant Board*—D. Pollock, chairman, T. Gregson, Chas. J. Harrod, H. T. Palmer, T. V. Battersby, commissioners; Harold B. Lee, sec-treas.

## MONTREAL WEST

(Incorporated as a Town, 1897).

This beautiful suburb, in the County of Hochelaga, is easy of access and is in great favor for residential building. Trains connect with the City at almost all hours both by the Canadian Pacific and Canadian National Railways, while the Upper Lachine and Sherbrooke Boulevard roads afford delightful drives. The Montreal Tramways Co cuts through the lower part of the Town affording a 20-minute service with the city, and

enters the Town by the Sherbrooke Boulevard with a 6 minute service. There is also a frequent motor bus service between Montreal West and Lachine, operated by the Montreal Tramways Company. Public and high schools and a post office with postal delivery twice a day. Population about 3,700.

### CORPORATION OF MONTREAL WEST

*Mayor*—G. W. Hodgson.

*Secretary-Treasurer*—Frank Radcliffe.

*Commissioners*—F. N. Wiggins, A. S. Runciman, G. H. Brain, M. W. Gallop.

### BOARD OF SCHOOL COMMISSIONERS

*Chairman*—Mrs. E. A. Leslie.

*Commissioners*—G. P. Aspinall, Peter Millar, John White, P. W. Wright.

## OUTREMONT

(Incorporated in 1875.)

A City situated near the west end of Mount Royal Park, forming part of the parish of Montreal, county of Hochelaga. It is bounded on the east by Laurier and St. Michael wards, on the north by St. John ward and Town of Mount Royal, on the west by Mount Royal ward. Two electric car service routes are provided by the Montreal Tramways Co. (Laurier av., St. Catherine rd. and Bellingham rd. for southern section; Bernard av., Outremont av. and Van Horne av. for northern section). A two and a half and five minute service is provided on each route, also autobus service on Bernard av. and Boulevard Mont Royal (its whole length) to Montreal Tramways terminus. The city contains seven very fine schools, four Catholic (College Stanislas, Quebecs Academy, St Germain and Lajole Schools) three Protestant (Strathcona Academy, Alfred Joyce and Guy Drummond public schools) and three large convents a City Hall and the Outremont Curling, Tennis and Bowling Clubs, Municipal Tennis, Shuffleboard Courts, Skating Rinks and Toboggan Slides. A municipal plant lights the city with electricity. It has an ample water supply, a thorough system of drainage, and an efficient police and fire brigade is maintained for the protection of the city. Easy of access from the City of Montreal (centre) no finer suburb can be found. Population, 31,452.

### CORPORATION OF OUTREMONT

*Mayor*—Romuald Bourque.

*Aldermen*—Alphonse Belanger, C. E. Eugene Maynard, T. H. Cooper, P. de G. Beaubien, S. A. Acres, L. P. Nelligan, M.D., B. Couvrette, K.C., S. D. Gameroff, J. H. LaTraverse.

*City Solicitor*—Robert Dufresne, K.C.

*City Auditors*—Sharp, Milne & Co. (Chartered accountants.)

*City Clerk and Treasurer*—Ernest T. Sampson, F.I.M.T.A.

*City Engineer and Manager*—Emile Lacroix, B.A.Sc.

*Building Inspector*—Emile Lacroix, B.A.Sc.

*Chief of Police*—J. Griffith.

*Chief of Fire*—Z. Sautoire.

*Medical Health Officer*—E. R. Dufresne, M.D.

*Recorder*—Roger Lacoste, K.C.

## ST. LAMBERT.

A City on the south shore of the St. Lawrence, directly opposite Montreal two miles from the centre of the city, in the county of Chambly, district of Montreal. The electric car service is operated by the M. & S. C. Ry. There is also an excellent train service by the Canadian National Railways. The Jacques-Cartier Bridge over the St. Lawrence to the South Shore is only a short distance from the limits of St. Lambert. Population, 8,500.

## MUNICIPAL COUNCIL

Mayor—N. H. Simms.

Aldermen—H. S. Robinson, Miss G. Emard, J. L. Townshend, J. D. Robitaille, M. A. MacAllister, J. C. Gilbert, C. F. Potter, sec-treas.

Manager—M. J. Rutledge, B.Sc.

Chief of Police—Gerald Reilly.

Supt. of Water Works—A. Le Royer.

Recorder—Aug. Angers, K.C.

Board of Health—Mayor and Aldermen.

Medical Health Official—J. R. Oulton, M.D.

Chief Assessor—O. A. Barwick, B. Arch.

Food Inspector—R. M. Levert, V.S.

Catholic School Board—Roma Gravel, pres., Phillias Baillargeon, sec.; Marcel Huet, syndic; J. D. Robitaille.

St. Lambert Board of School Commissioners—R. L. Harrison, chairman; J. W. Morrison, C. J. Green, Mrs. F. I. Nourse.

Chambly County Protestant School Board—J. R. Reilly, chairman; G. L. Collier, A. M. Weldon, J. R. Beattie, A. E. Steels, H. B. Lee, sec-treas.

## TOWN OF HAMPSTEAD

A Town adjoining Notre Dame de Grace ward of the City of Montreal, from which it is separated on the south by Cote St. Luke Road, and on the east by Macdonald av. Hampstead begins five blocks west of Snowdon Junction along Queen Mary Road which leads directly into the Town.

Hampstead is a beautifully laid out garden Town, and has very rigid building restrictions. Population about 3,210.

## CORPORATION OF THE TOWN OF HAMPSTEAD.

Mayor—Lyman I. Playfair.

Aldermen—H. H. Barton, D. L. Campbell, A. E. Pierce, D. F. Planche, R. B. Rolland.

Board of School Commissioners—Dr. R. S. Jane, Chairman; R. H. Chadwick, H. Miller, E. A. Hankin, A. M. Walsh, Mrs. A. Sorby, commissioners.

Manager—K. G. Cameron.

Assistant to Manager—C. E. McLean.

Sec.-Treas.—Vacant.

Chief of Police—Arthur Harris

Recorder—G. R. W. Owen.

## TOWN OF MOUNT ROYAL

## THE MODEL CITY

Eight minutes from the heart of Montreal via the electrically-operated Tunnel of the Canadian National Railways, lying on the northwest slope of Mount Royal and adjoining the cities of Montreal and Outremont.

The Town is conveniently reached by automobile from Outremont by following St. Catherine road to Rockland avenue, crossing the Canadian Pacific Railway tracks. The Town of Mount Royal's territory commences at this point. To the westward it can be reached by Cote des Neiges rd which is the continuation of Guy street.

Montreal Tramway buses (corner Queen Mary rd. and Cote des Neiges) cross the Town of Mount Royal to Park av. and Jean Talon with a ten-minute service.

Education—For Protestant and Catholic School purposes the territory of the Town of Mount Royal has been created into a separate school district. The School Commissioners have built a fire-proof two-story and basement school, built of brick and re-inforced concrete where elementary and high school grades are taught. A new fireproof school has been built to accommodate the first four grades. The classes are conducted by teachers of high scholastic degree. The Catholic education is taken care of by a new Catholic school, modern in every detail. Population about 9,227.

School enrolment for both schools 1,830 pupils

## CORPORATION

Mayor—R. E. Schofield.

Aldermen—L. E. Lister, R. J. Dawson, E. Lanthier, E. T. Moore, C. T. Russell.

Manager—W. R. J. MacNeil.

Sec-Treasurer—D. W. Lough.

Engineer—A. M. Hamilton.

Police Dept.—Wm. Mather, chief.

Board of Protestant School Commissioners—H. F. Finmore, chairman; Mrs. R. R. Buchanan, J. F. Close, R. C. Flitton, J. J. H. Miller, commissioners; John Thredgold, sec-treas.

Board of Catholic School Commissioners—Dr. Roland Decarie, John C. Broderick, Roger Langlois, chairmen; Jules Archambault, Louis Desjardins, commissioners; Adrien Perrault, sec-treas.

Town Office 90 Roosevelt av. Town of Mount Royal.

## VERDUN

The City of Verdun is ideally located at the south-western limits of Montreal on the banks of the St. Lawrence River, which is about 8 miles wide at this point. The municipality was incorporated as a village under the name of Riviere St. Pierre in 1875, changed to the Village of Verdun in 1876, erected into a Town in 1907 and a City in 1912. Since 1901 its population has increased from 1886 to 77,872. Possessing few large industries it is mostly composed of homes and stores. Its famous boardwalk is now being replaced by a modern asphalt promenade, brilliantly lighted, along the entire three-mile river front, and banked with attractive lawns and shrubbery. Municipal tennis courts, a bowling green, a yacht club, a motor boat club and a sailing club are also situated here. In addition a very modern Municipal Auditorium and Hockey Arena seating 4,500, and a municipal natatorium consisting of two magnificent open air swimming pools are located on the river front.

Great success has been achieved in the building of homes under the National Housing Act, the City offering suitable lots for sale at very low prices. On this plan a small model village has been constructed in the Crawford Park district.

Educational facilities are excellent with thirteen Catholic and seven Protestant schools and three commercial colleges. There are two hospitals and nineteen churches. Public services such as health, police, fire, water and electricity are of the best. The City Council gives special attention to providing and supervising playgrounds for children, and the Municipal Playgroud Commission operates all sports on the numerous playing fields.

A comprehensive juvenile library is also operated by the City.

The form of civil government consists of a mayor and eight aldermen elected every three years. The City Manager System has been in force since 1938. Population 77,872.

## CORPORATION.

City Hall—475 Church avenue.

Mayor—Edward Wilson.

Aldermen—R. Jeaneau, H. L. Poirier, J. Lareault, P. E. Joannette, J. A. Soullere, J. J. Lennon, A. Rolland and T. A. B. Wilcox.

General Manager, Director of Finance and Treasurer—J. R. French.

City Clerk—A. J. Burgess.

City Engineer—Henry Hadley, C. E.

Asst. to City Engineer and Supt. of Roads—J. C. Brosseau.

Superintendent of Works—A. Lefort.

Director of Police—Pierre Gatineau

Director of Fire—Raoul Proulx.

Municipal Playgrounds Commission—Ald. T. A. B. Wilcox, chairman.

Medical Health Officer—A. D. Archambault, M. D.

Chief Food Inspector—Dr. Geo. Etienne.

Legal Advisor—Francis Fauteux, K.C.

Asst. Legal Advisor—Yves Leduc.

Recorder—E. Jesariats, K.C.

Auditor—L. D. Viau, C.A.

Assessors—L. Belanger, G. E. Good, W. Tessier.

## VILLE LaSALLE

A Town on the North Shore of the River St. Lawrence, situated between Verdun and the City of Lachine, directly connected with Montreal West and Ville St. Pierre on the north, in Jacques Cartier County.

The Town Hall is located at No. 13 Strathyre av. Council meets on second Wednesday of each month. Fire and police departments are located at 8745 La Salle Blvd., Ville La Salle. The C. P. R., N. Y. C. and Delaware & Hudson R. R. Co., supply service. "La Salle" being the name of the Railway Station. Population, 9,395.

## CORPORATION OF THE TOWN OF LASALLE

Mayor—J. Anatole Leroux.

Aldermen—Albert W. Stinson, B. T. Clement, Albert Boivin, Adervil Desaulniers, Lionel Bannon and Alf. Lefebvre.

Secretary-Treasurer—Alb Gravel.

Engineer—Athanase Latour.

Chief of Police and Fire—Daniel Demers.

Health Dept.—Maurice Lacharite, M.D.

Recorder—Jacques Belque

## VILLE ST. LAURENT

A thriving Town and parish in Jacques Cartier County on the island of Montreal and on the C.N.R., 4 miles from Montreal. The Montreal Tramways Co. runs electric car and bus service between here and Montreal at 8-minute intervals day and night. Population about 20,600.

## CORPORATION

Mayor—Me J. M. Cousineau.

Town Manager and Clerk—Lucien Toupin, C.A.

Treasurer—L. P. Chamberland.

Assistant-Treasurer—Robert Valade.

Suprintendent—R. Lecavaller.

Town Engineer—Marcel Huot.

Aldermen—East Ward, L. C. Harris, J. Frs. Belanger, Frederic Houde; West Ward, Paul-Emile Laperriere, Leopold St-Aubin, J. Henry Petit.

## VILLE ST. PIERRE

The Town is situated on the north side of the Lachine Canal, between the City of Lachine and the Town of Montreal West, in Jacques Cartier County, being traversed by the C.N.Ry and the C.P.Ry., and having a twenty-minute service to the heart of the City of Montreal by the Montreal Tramways Co. Population, 4,976.

## CORPORATION

Mayor—C. A. Kirkland, M.D., M.P.P.

Aldermen—Joseph Laurendeau, Donat Boyer, Lucien Rochon, Richard Scott, D. Gowans, J. E. Fournier.

Sec.-Treas.—H. F. Malo.

Asst. Sec.-Treas.—Miss C. Gadoury.

School Commissioners—Donat Boyer, president, councillors; Joseph Laurendeau, Victor Paul, Lucien Rochon, Conrac Picard; H. F. Malo, sec-treas., Com Sch.

Fire & Police Chief—Eugene Lavallee.

## WESTMOUNT

The City of Westmount is beautifully situated on the western slope of Mount Royal, and from the upper level a magnificent view of the St. Lawrence River, Lake St. Louis and surrounding country is obtained. The city is almost exclusively residential and may be designated a "city of homes." The city is governed by a mayor and five aldermen, elected for a term of two years by the city at large. The city manager form of government has been in vogue for 27 years, and the city's progress is evidence of the wisdom of the adoption of this system of government.

The city owns an electric light and power plant and garbage destructor plant.

Park and playground spaces owned by the city cover an area of about 119 acres equal to 12 per cent of the total area of the city.

Many municipal tennis courts are in great demand during the summer months and every facility is given for the enjoyment of winter sports.

The Westmount Athletic Grounds on St. Catherine Street, containing an area of 7.8 acres, are equipped for sports and recreation.

The city owns a free public library. During the year 164,101 volumes were circulated for home use.

The Victoria Hall is in great demand for activities of a varied nature.

Public education is provided by the school commissioners of Westmount and the school commission of St. Leon de Westmount. In addition there are a number of private schools.

The city is supplied with filtered water and a 98 per cent efficiency is required. The water is regularly tested to assure that a maximum of purity is maintained. Population about 26,825.

## CORPORATION.

City Hall—Sherbrooke W. cor Argyle av.

Mayor—J. S. Cameron.

Aldermen—J. S. B. Pemberton, commissioner of finance; R. L. Campbell, commissioner of roads and municipal buildings; W. A. Kennedy, commissioner of electric light & power, health and public welfare; R. H. Dean, commissioner of police and fire; B. Panet-Raymond, commissioner of parks.

City Clerk & Treasurer's Dept.—C. W. Houston, secretary-treasurer; A. W. D. Swan, assistant secretary-treasurer; A. R. Bourdon, city accountant; J. W. Weldon, K.C., city solicitor; Riddell, Stead, Graham and Hutchison, C.A., Auditors.

Board of Assessors—J. Colin Kemp, chairman; Donald Baillie and A. S. Rutherford.

General Manager & City Engineer.—P. E. Jarman.

Asst. General Manager—Thos. J. Hughes

Roads Dept.—P. G. Delgado, supt of Public Works

Electric Light Dept.—E. P. Brown, supt.

Police Dept.—R. A. Byford, chief.

Recorder's Court—Chas. A. Hale, K.C., recorder; A. E. Laverly, deputy.

Fire Dept.—W. C. Cobb, chief.

Health Dept.—Dr. M. B. Donaldson, medical health officer.

Parks and Playgrounds—E. J. Anderson, superintendent.

Recreation—L. J. Fournier.

Library—Miss Kathleen Jenkins, librarian; Miss Margaret Good, reference librarian; Miss R. Gwendoline McEwen, children's librarian.

Library Trustees—A. W. McMaster, W. B. Scott, K.C., and Mrs. Grant Reid.

PRIVATE

\$1500

INCHES TO  
WE YOUMORTGAGE LOAN  
CORPORATION

4932

# WHY ADVERTISING IN LOVELL'S MONTREAL DIRECTORY PAYS

**Y***OU men who spend large amounts of money on creative advertising— who when you think of advertising, think ONLY of creative advertising—*

*A word with you.*

When you invest a dollar you protect that dollar to the utmost.

What are you doing to protect the money you invest in creative advertising ?

The morning paper that lies before you on your breakfast table has in it an advertisement that cost you many dollars. This same paper has the day of the month printed at the top of each page, twice on each sheet; where everyone can easily read it.

You saw the date.

But when you reached the office, sat down at your desk, and wanted the day of the month, **YOU REFERRED TO YOUR CALENDAR**, and a dozen times that day you referred to your calendar. Your employees did the same. The whole business world did likewise.

Why ?

The public will see your creative advertisement.

But when they want your goods — **THEY WILL TURN TO LOVELL'S MONTREAL BUSINESS DIRECTORY AT THE END OF THIS BOOK—** just as you turned to your calendar.

Protect that money you are putting into creative advertising.

Protect it with **REFERENCE** advertising in **LOVELL'S MONTREAL DIRECTORY**.

A small percentage of the amount you spend for creative advertising **WILL DO IT.**

**LET US TALK IT OVER WITH YOU**

*Call our Advertising Department*

**Phone MARquette \*2321**

# LOVELL'S MAP OF GREATER MONTREAL

IN COLOR—SIZE 48" x 36"

**T**HIS MAP covers Montreal from Bout de l'Isle northwest to and including Ahuntsic, Cartierville and Ville St. Laurent, and west to and including Lachine, Ville St. Pierre and Montreal West. In addition to the City of Montreal the following places are shown: — Westmount, Verdun, Outremont, Montreal West, Montreal East, Lachine, Ville St. Pierre, Cote St. Luc, Ville St. Laurent, Ville La Salle, Town of Hampstead, Town of Mount Royal, Laval de Montreal (Bout de l'Isle), Pointe aux Trembles, Montreal North, Ville St. Michel, St. Leonard de Port Maurice

— Also Includes —

Parks and Playgrounds Prominent Buildings, Clubs, etc., shown.  
Also Railway and Street Car Lines and intersecting street numbers on main thoroughfares

Mounted on linen with rollers

Complete Street Index in book form supplied with each Map

---

POCKET EDITION - SIZE 31½ x 23½ - WITH COMPLETE INDEX

Price 25 Cents

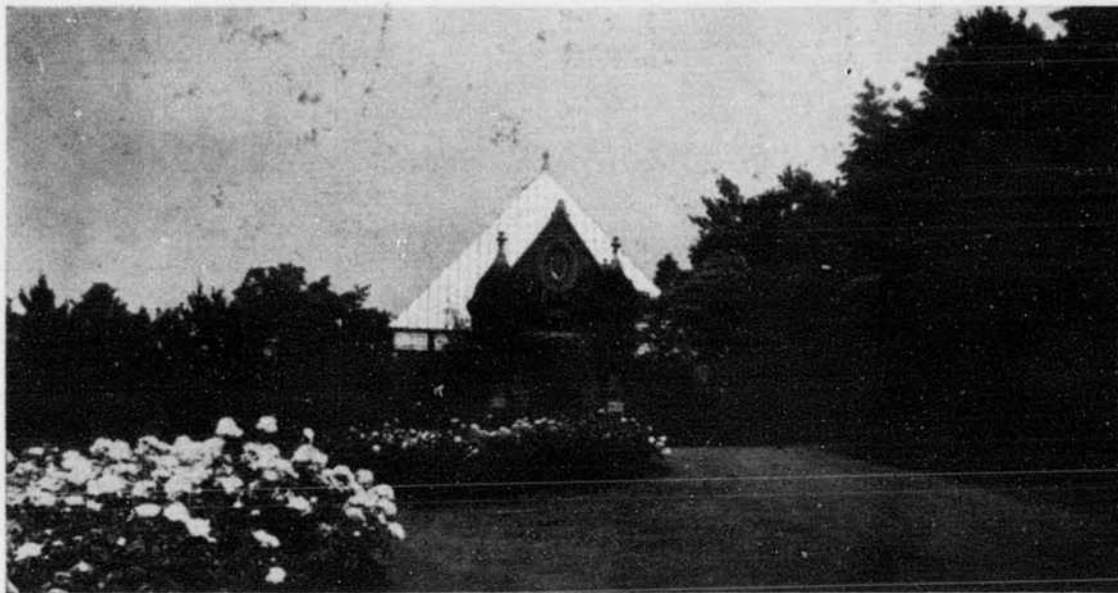
PUBLISHED BY

**JOHN LOVELL & SON, LIMITED**

ESTABLISHED 1835

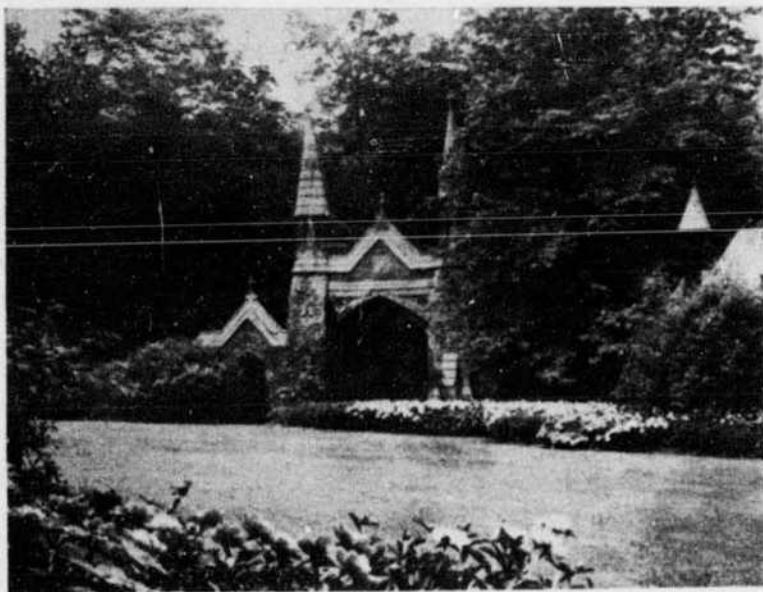
423 St. Nicholas Street - Telephone MA. 2321

## Ample Cemetery Space for Another 100 Years



*Crematory - Mount Royal Cemetery, First Crematorium in Canada*

**NON-PROFIT—ALL REVENUES ARE USED FOR OPERATION, DEVELOPMENT  
AND MAINTENANCE**



*Main Entrance - Mount Royal Cemetery*

The Trustees Give Their Services  
Without Remuneration

No Commission paid to any Undertaker  
or Monument Dealer



*Waiting Room - Hawthorn-Dale Cemetery*

## Mount Royal Cemetery Company

1207 Drummond Street, Montreal 25 - Phone MARquette 8059

<i>Office Hours</i> (Except on Legal Holidays)	{	MONDAY to FRIDAY: 9.00 a.m. to 12.00 Noon
		1.30 p.m. to 5.00 p.m.
	{	SATURDAYS: 9.00 a.m. to 12.00 Noon

TRUE TO THE HIGHEST TRADITIONS OF FINE PAPERMAKING



**SUPERFINE LINEN  
RECORD**

Canada's finest bond paper, owes its time-defying strength and beauty to its 100% new rag content. Yet it costs but a fraction of a cent more per letter than the cheapest bond. Your printer, lithographer or engraver will be pleased to produce your stationery on this superfine Rolland paper.

**I**N the family of papers which bear the "R" Shield watermark are types for every business purpose. Some, like Superfine Linen Record, are supreme examples of the papermaking craft; others are "service" papers for routine tasks.

But all are true to the Rolland tradition—all meet the most critical tests of their fitness to fulfill their appointed purpose in their appointed price class.

**ROLLAND PAPER**  
COMPANY LIMITED

*High Grade Paper Makers since 1882*  
MONTREAL, QUE.



BRANCH OFFICE: TORONTO, ONT. • MILLS AT ST. JEROME, QUE. AND MONT ROLLAND, QUE.