

121 m/s

NA
747
M6A53
1978
RSV
v.9b

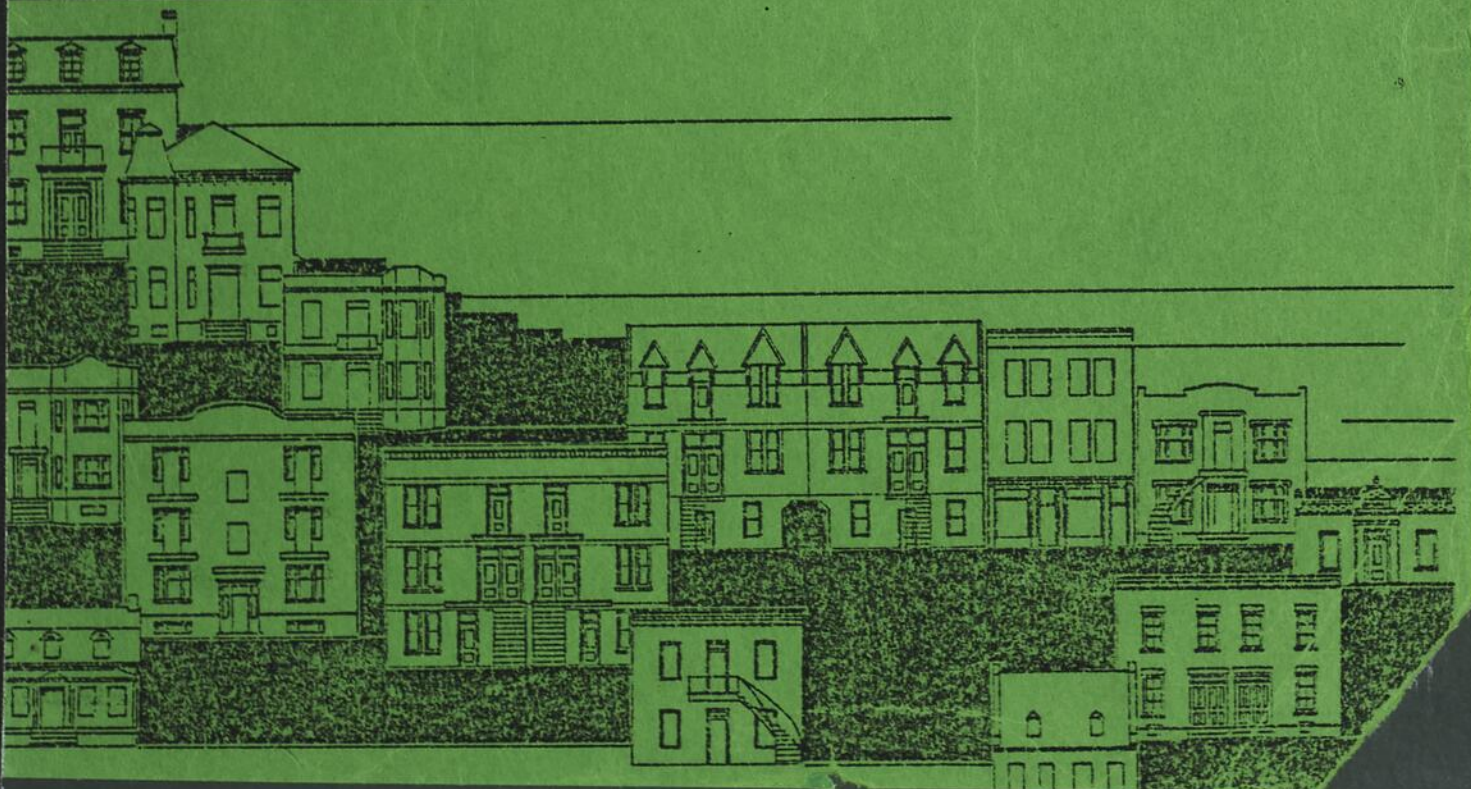
ANALYSE DU MACRO-INVENTAIRE MONTRÉALAIS
ENSEMBLE SAINT-ANTOINE

9_b

4230-50-30 Code	SUJET MONTREAL - ST-JOSEPH/ST-ANDRE/ST-GEORGES - INV. ARCHIT. (9) - V.2 *
Unité: DIRECTION REGIONALE MONTREAL - DEPOT DE DOCUMENTS	
SECTEUR: RM	

E T H N O T E C H
5478 1ère avenue charlesbourg, G1H-6T7
I N C.

recherche et mise en valeur du patrimoine





Bibliothèque
et Archives
nationales

Québec 



ANALYSE DU MACRO-INVENTAIRE MONTRÉALAIS

ENSEMBLE SAINT-ANTOINE

9

Quartiers Saint-Joseph, Saint-André

et

Saint-Georges

VILLE DE MONTRÉAL

ET

MINISTÈRE DES AFFAIRES CULTURELLES

PATRIMOINE
MONTRÉAL

07 JUIN 1983

M. A. C.

MONTRÉAL

JUIN 1982





Fig. 100 Maison 3083-3071
avenue Trafalgar.

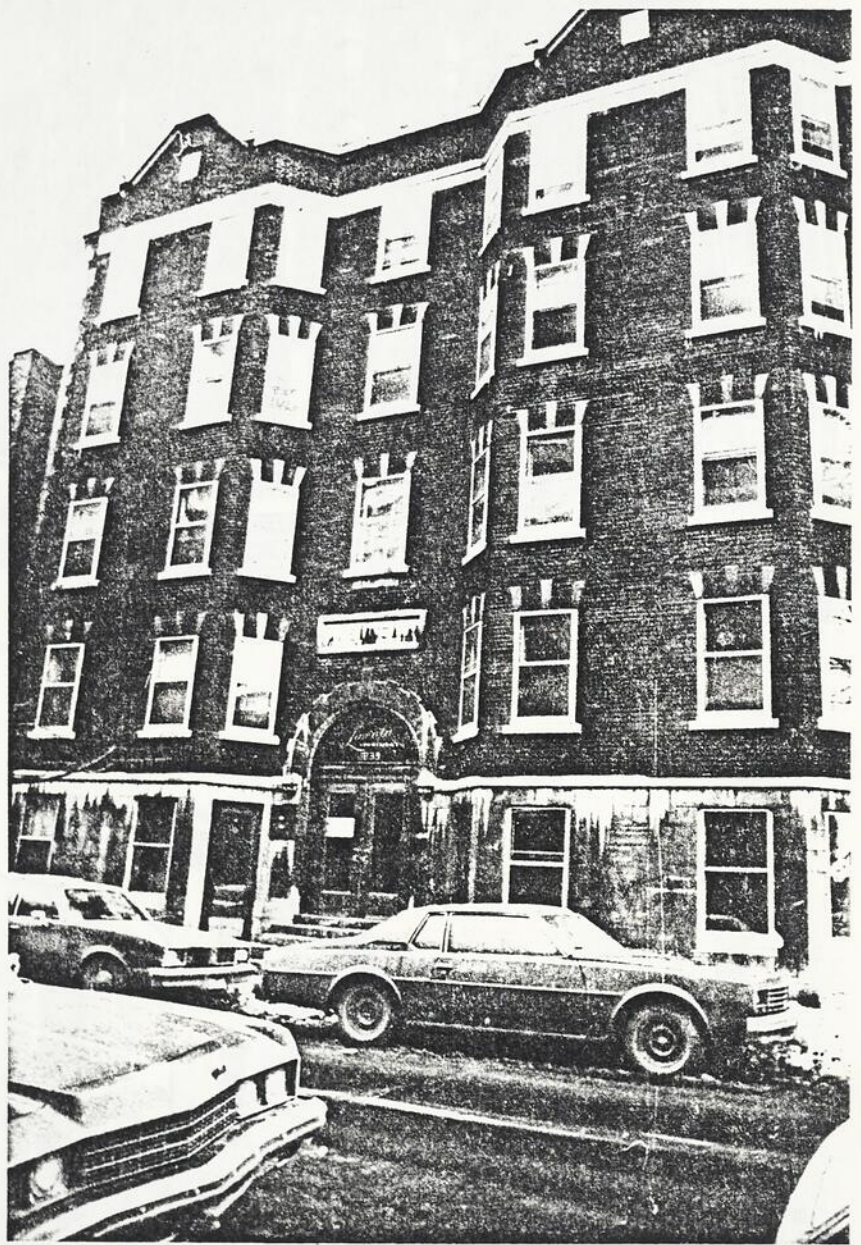


Fig. 101 Appartement Lincoln,
1839 Lincoln.



Fig. 102 Appartement Sherbrooke, 1374 Sherbrooke.

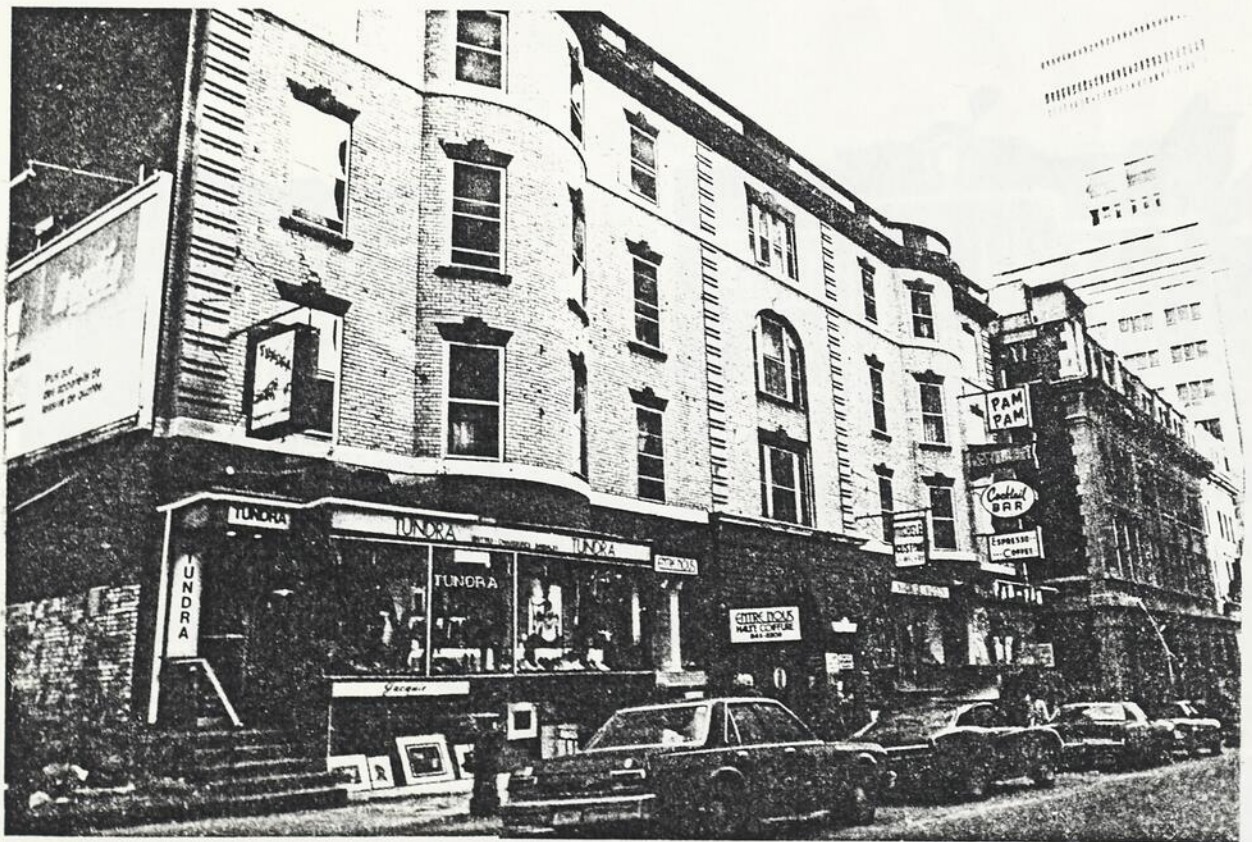


Fig. 103 Stanley Court, 1425-39 Stanley.



Fig. 104 Appartement Marlborough, 570 Milton.

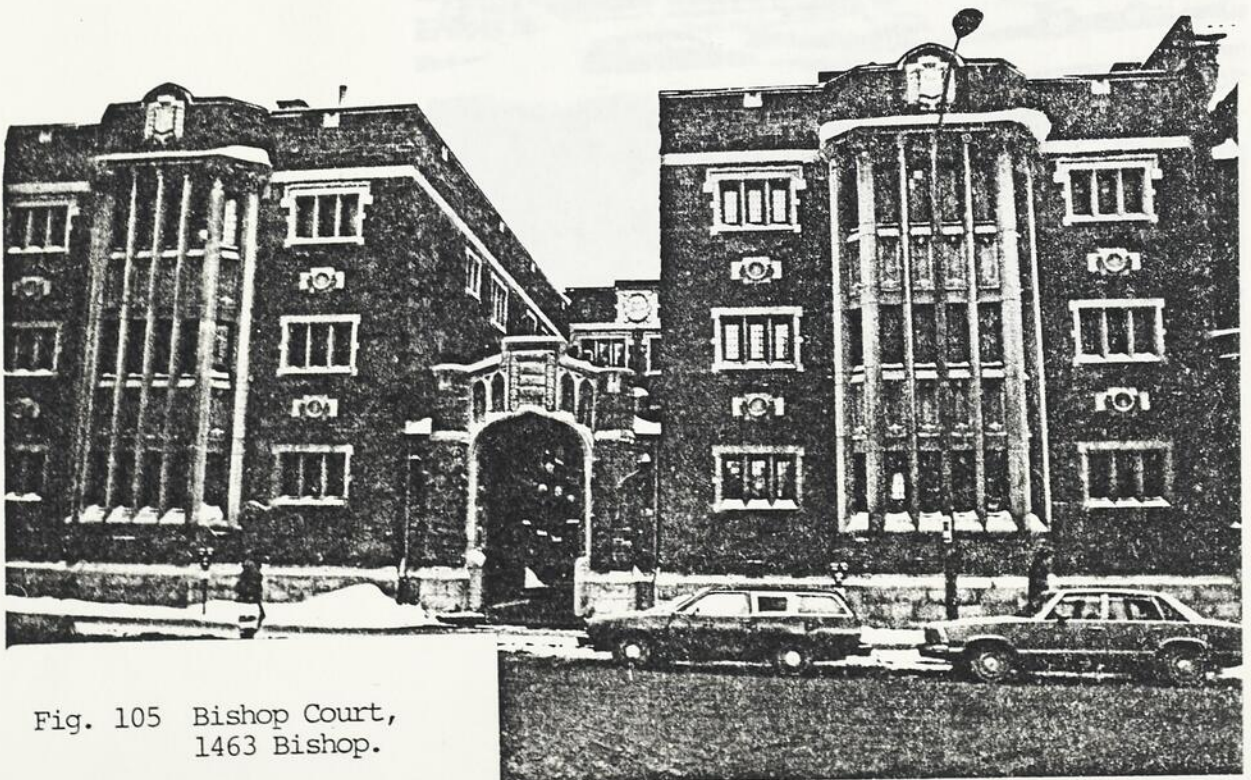


Fig. 105 Bishop Court, 1463 Bishop.

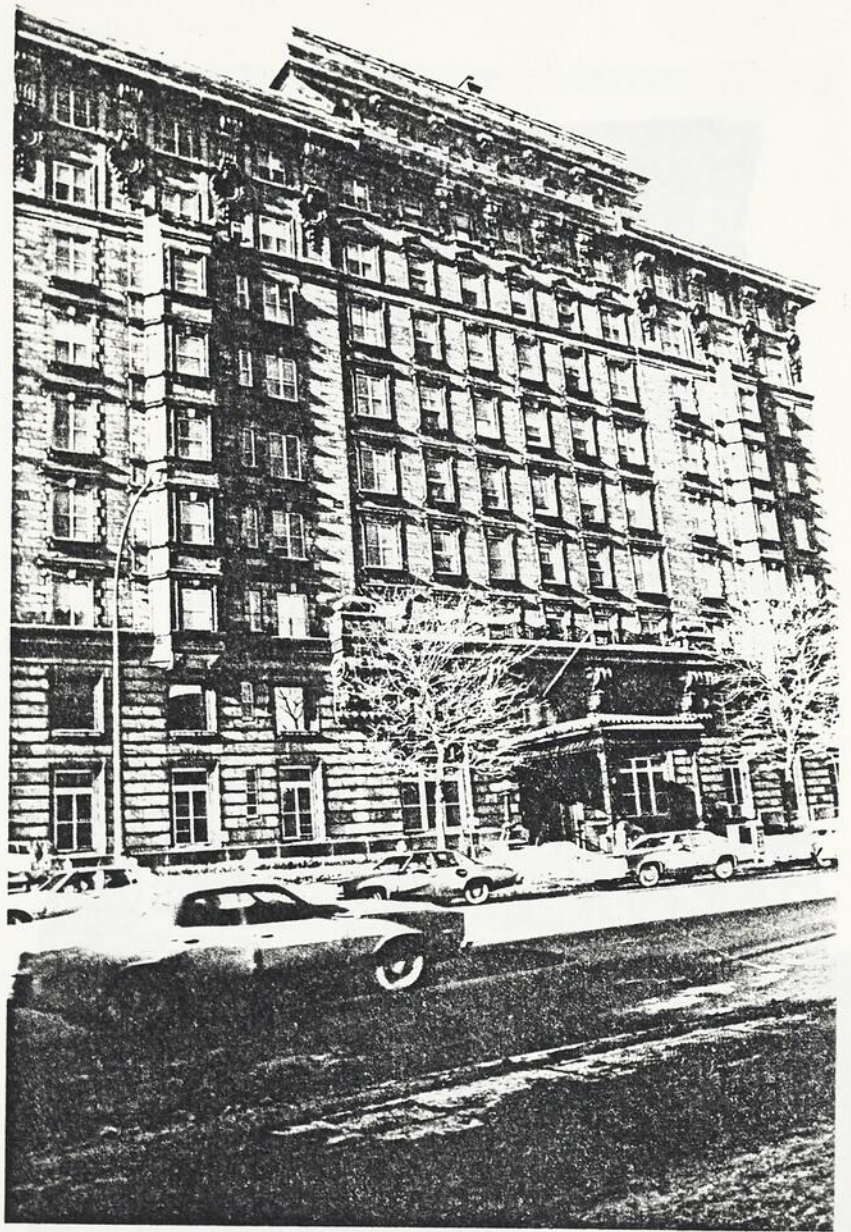


Fig. 106 Appartement Linton,
1509 Sherbrooke O.



Fig. 107 Appartement Royal
George, 1452 Bishop.

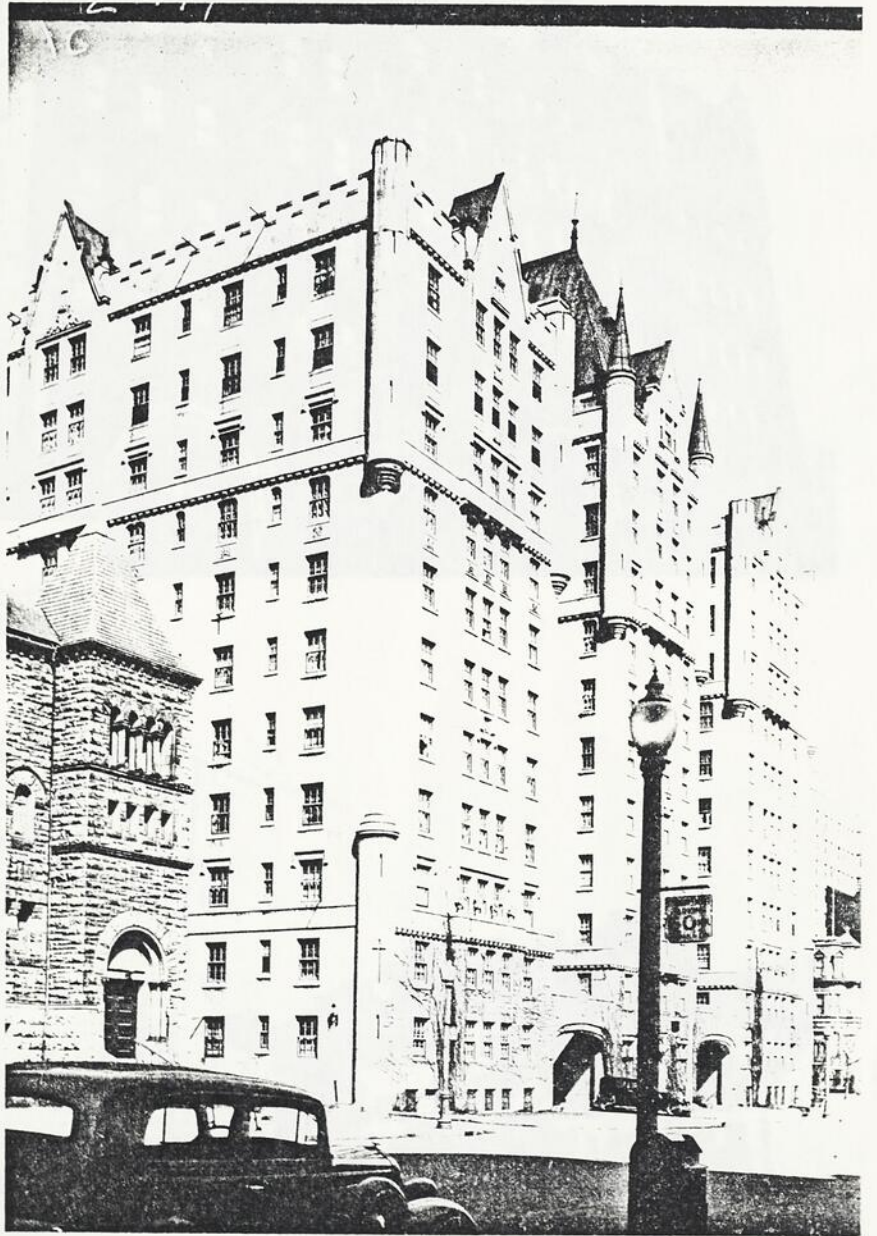


Fig. 108 Appartement Le Château, rue Sherbrooke O., 1936.



Fig. 109 Appartement Trafalgar, 3980-2 Côte-des-Neiges.

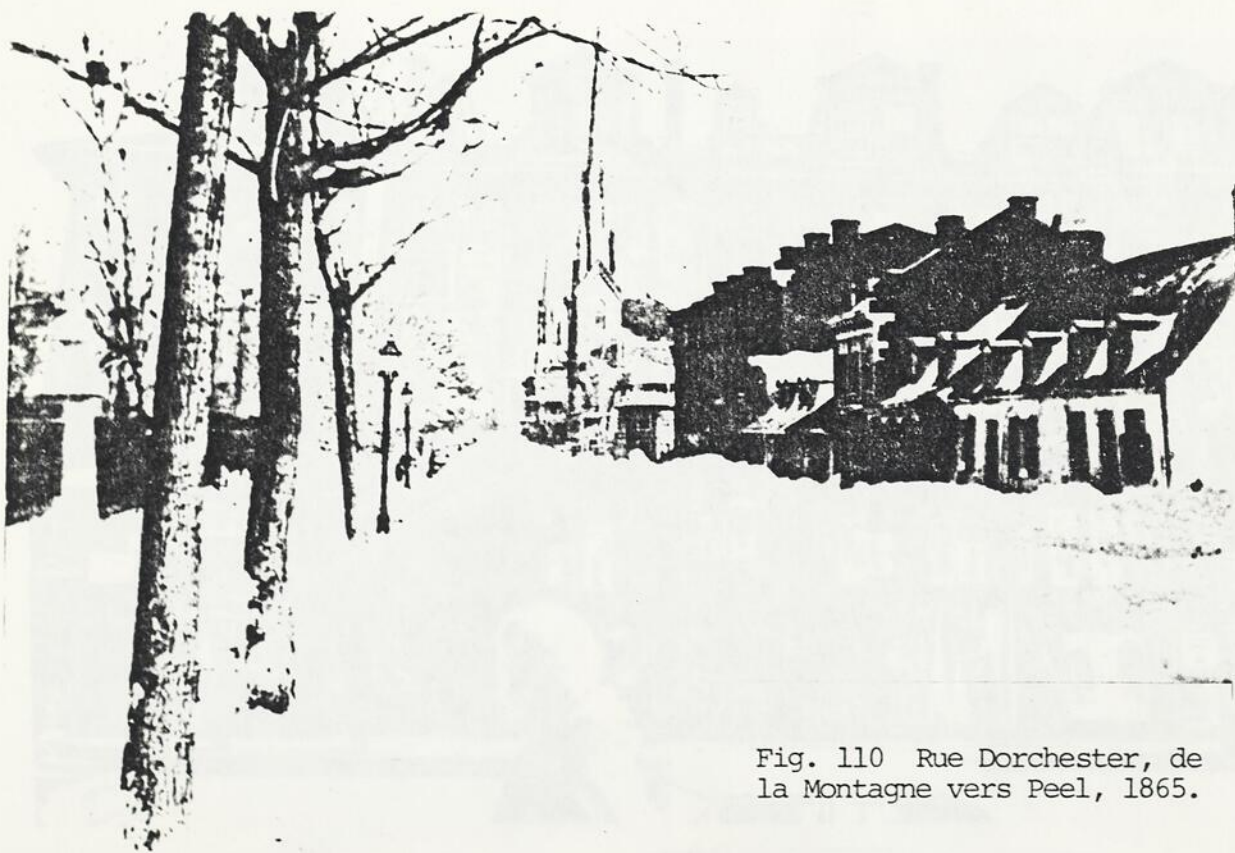


Fig. 110 Rue Dorchester, de la Montagne vers Peel, 1865.



Fig. 111 Maison 711-723
Notre-Dame O.



Fig. 112 Maison 1300-1314
Sainte-Catherine O.



Fig. 113 Maison 3724 Mc
Tavish.

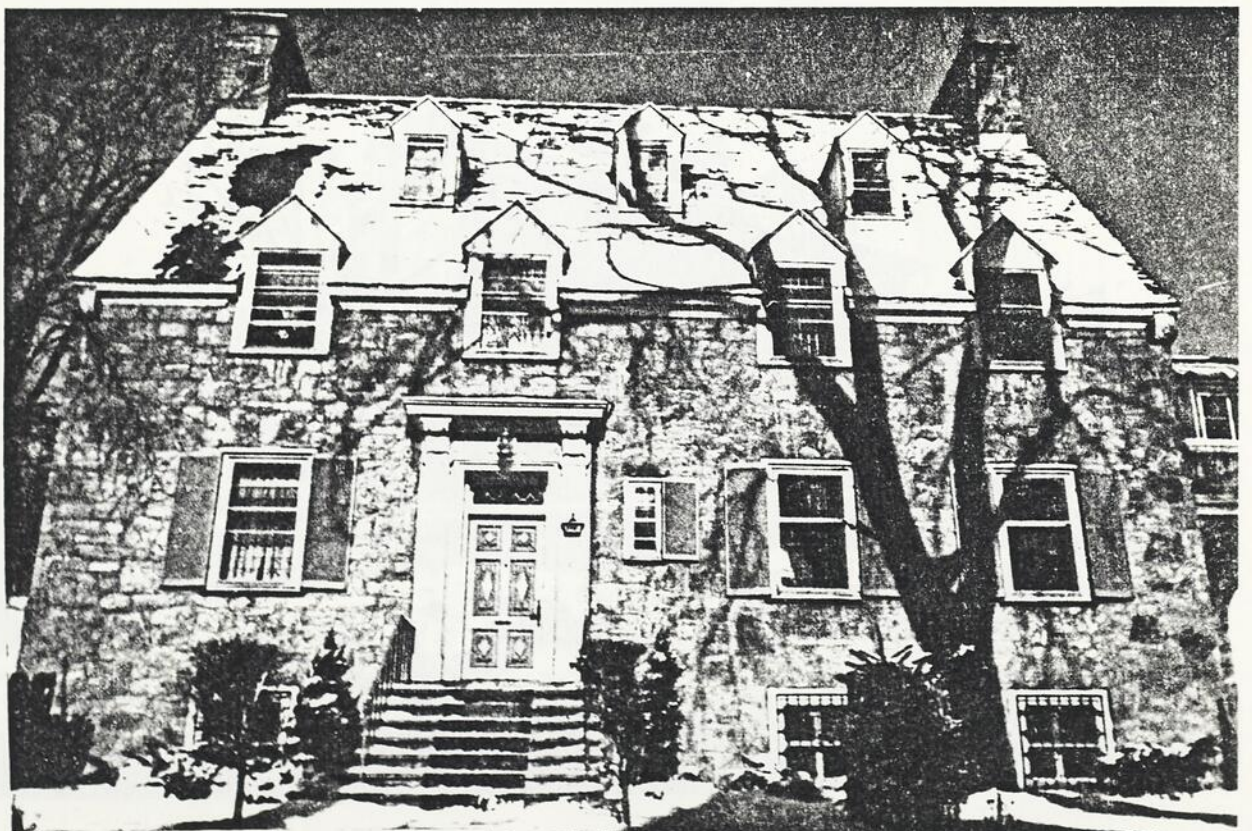


Fig. 114 Maison 3481
Holton.



Fig. 115 Centre d'Art du
Mont-Royal.

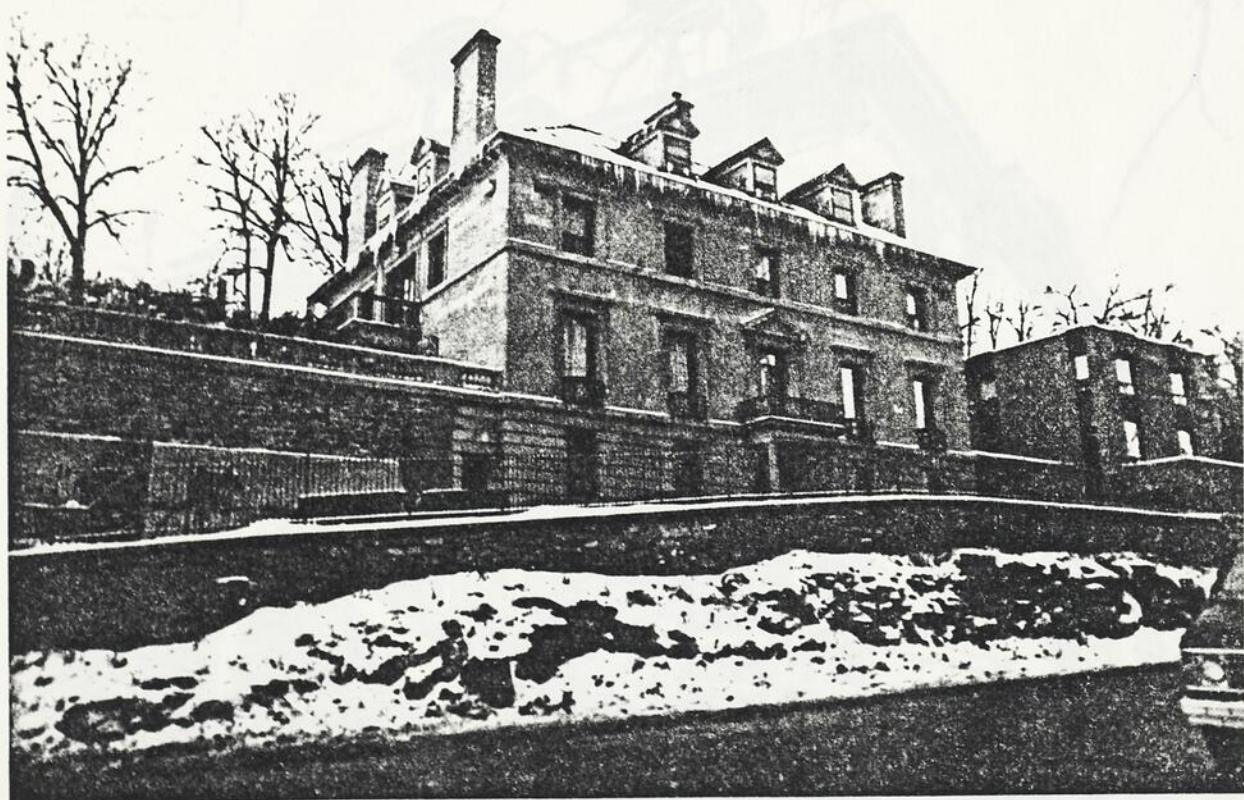


Fig. 116 Maison 1415 ave-
nue des Pins O.



Fig. 117 Maison 1242 Red-
path Crescent.



Fig. 118 Maison 3424 Simpson.

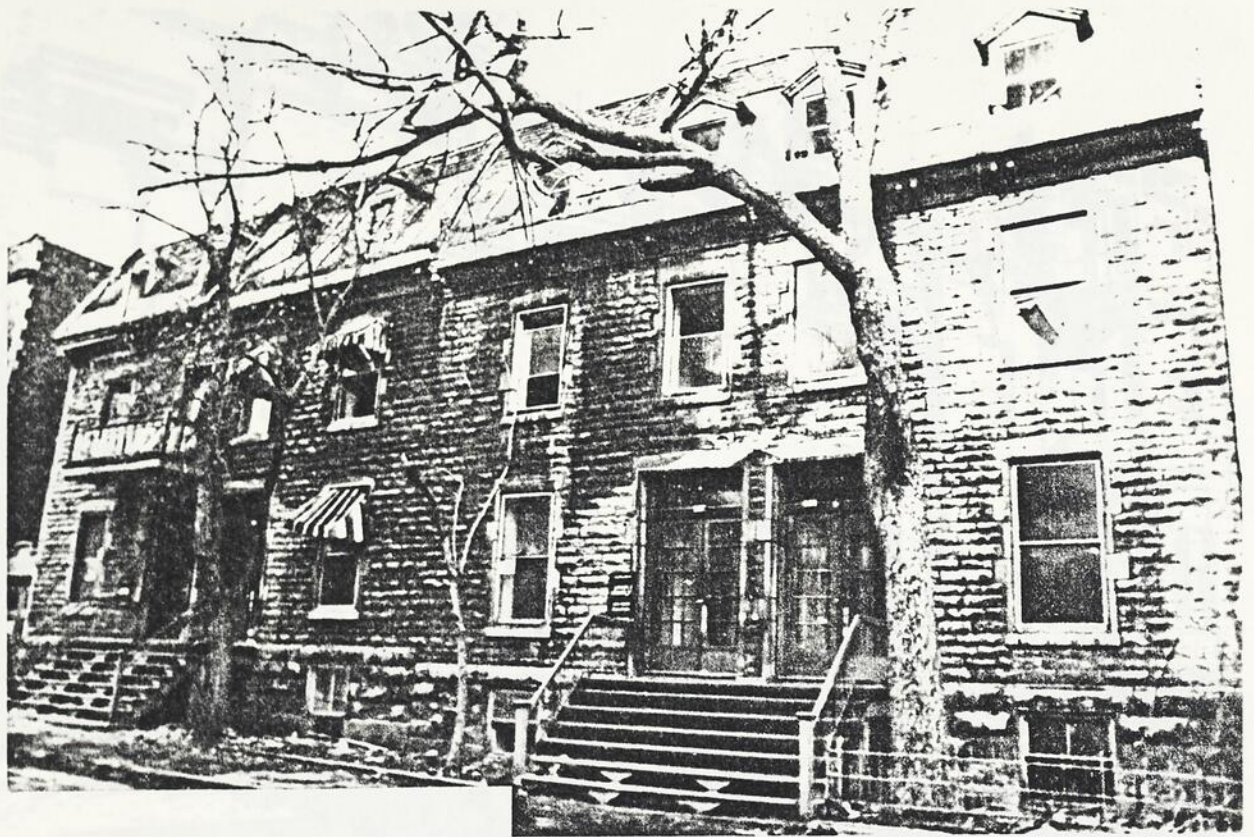


Fig. 119 Maison 3573-3585
avenue Lorne.



Fig. 120 Maison 3661
Université.



Fig. 121 Maison 1061-1073
MacKay.



Fig. 122 Maison 1060-1072
MacKay.

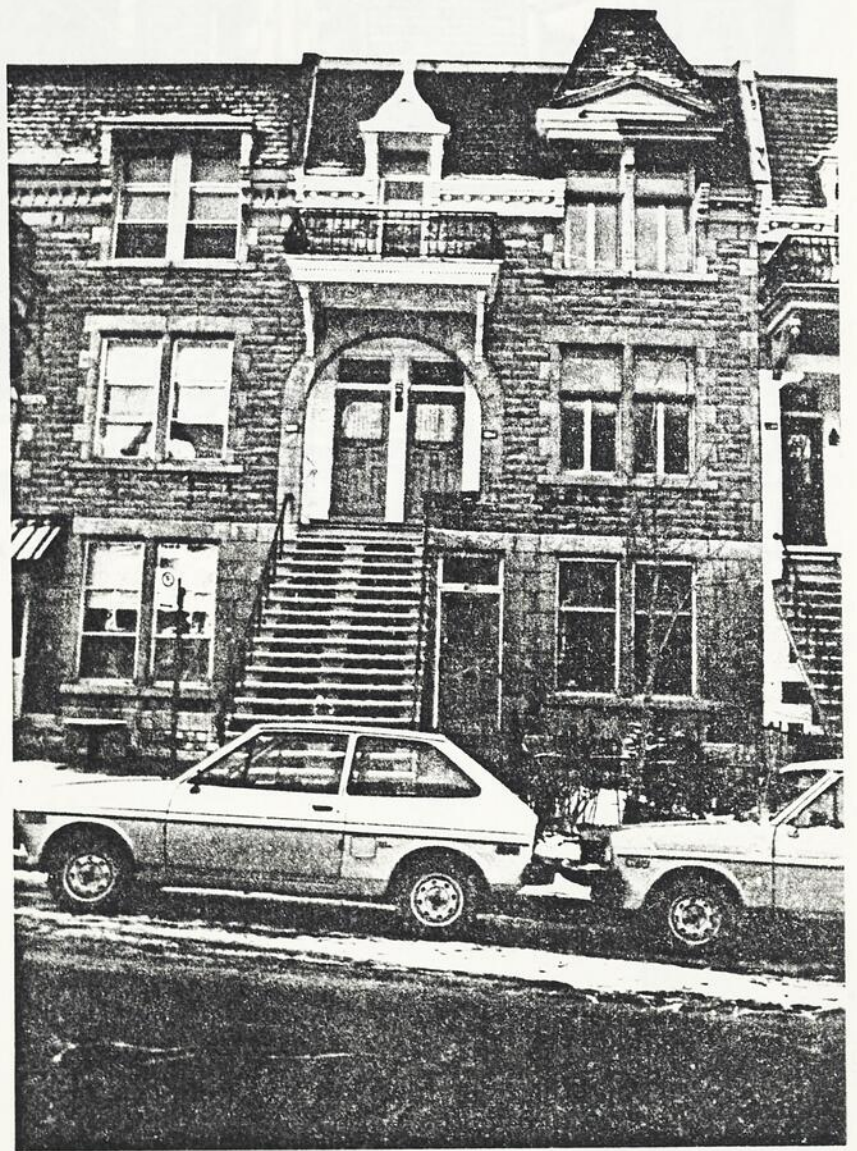


Fig. 122 Maison 2260-2262
Souvenir.

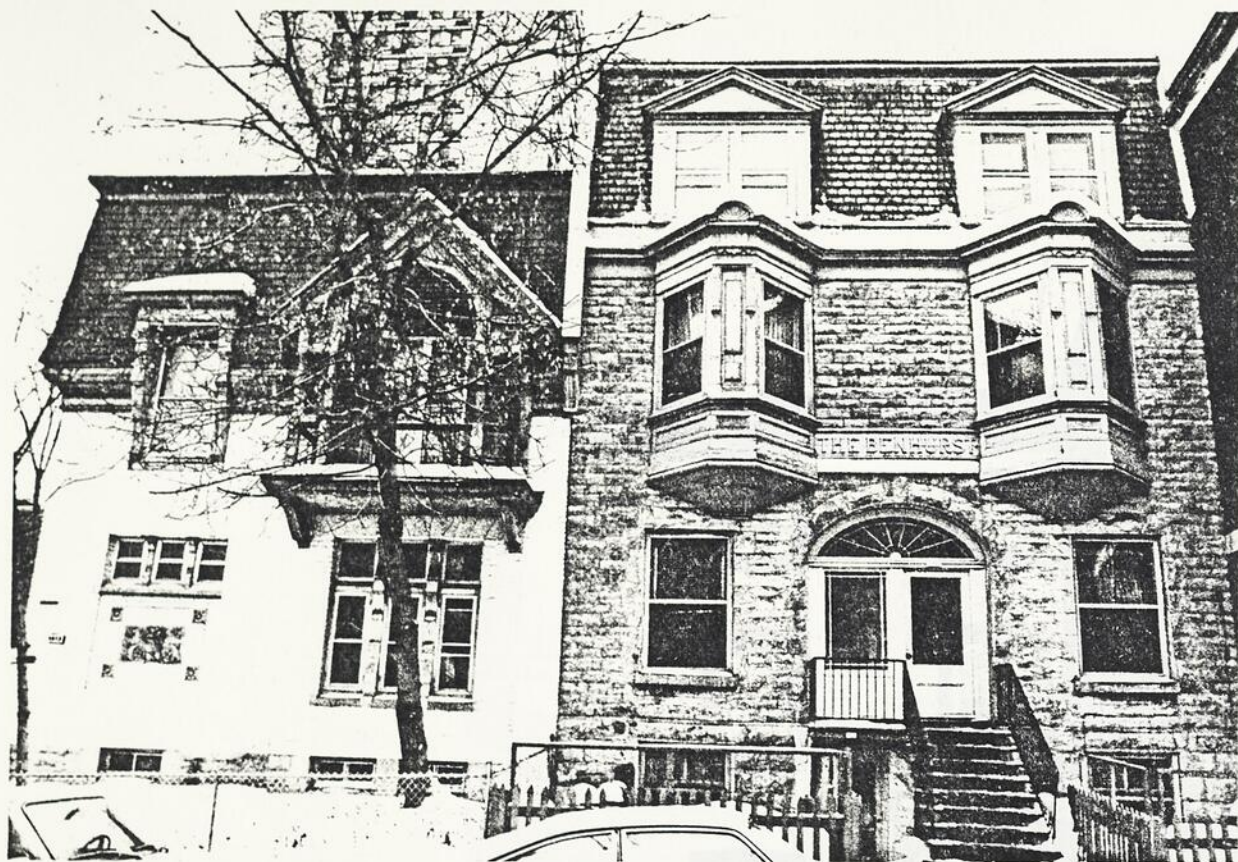


Fig. 123 The Benhurst,
1812-1820 Baile.

Fig. 124 House 1218 Broadway.

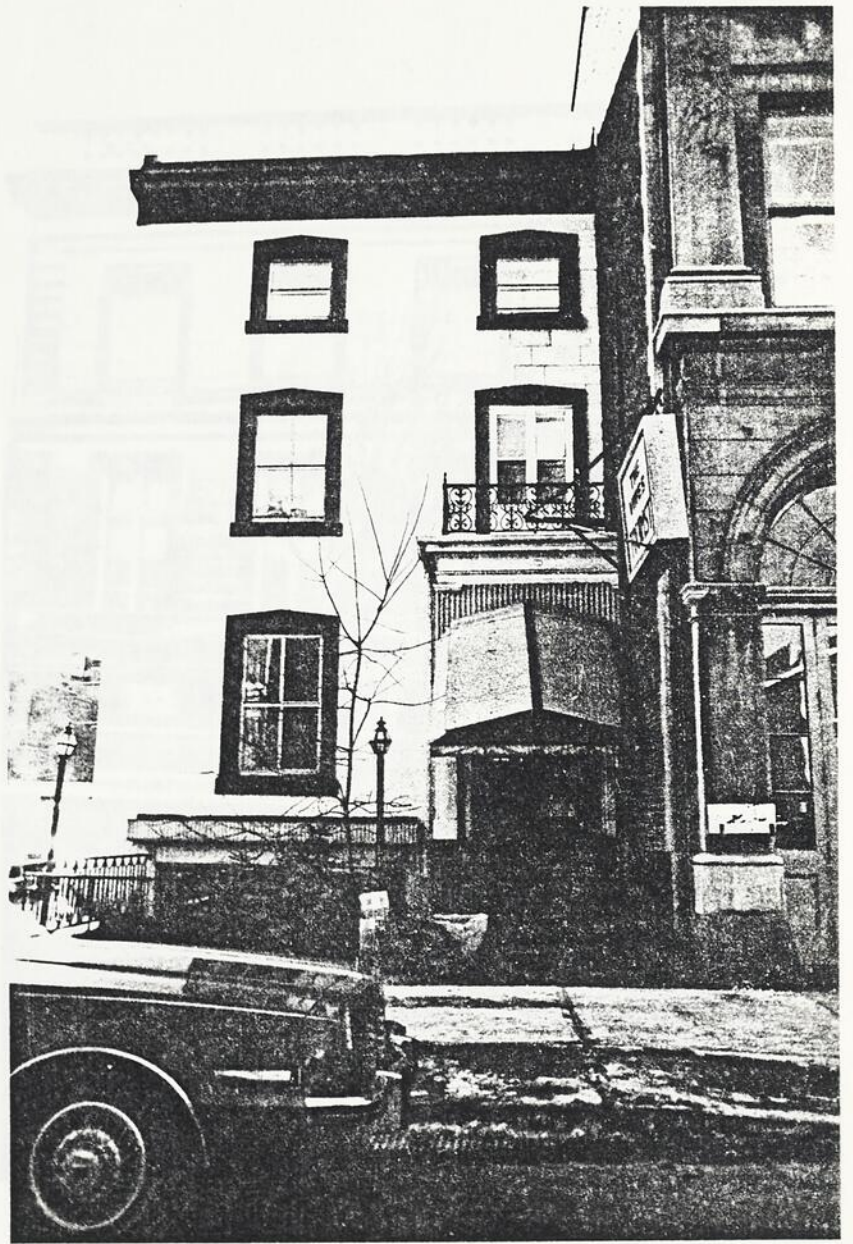


Fig. 124 Maison 1208 Drummond.

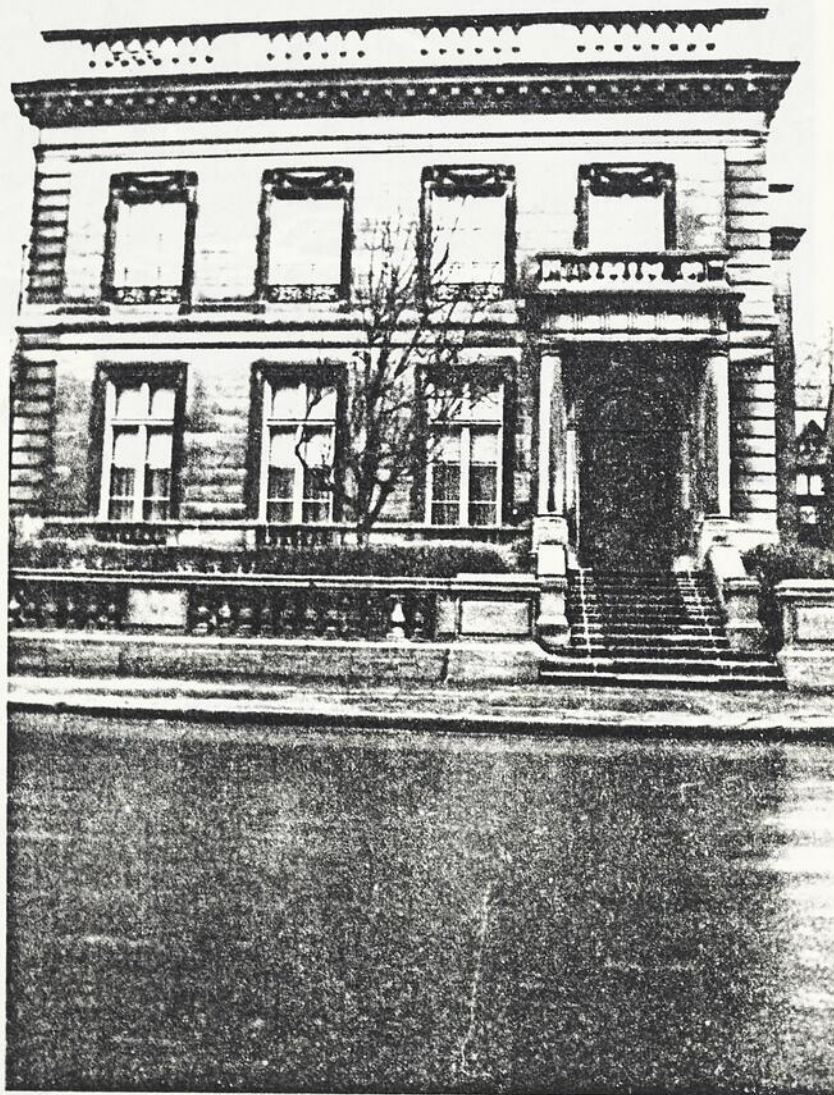


Fig. 125 Maison 1507 Docteur
Penfield.



Fig. 126 Maison 1222-1186
Seymour.



Fig. 127 Maison 1083 McKay.



Fig. 128 Edifice Dasco,
900 Sherbrooke O.

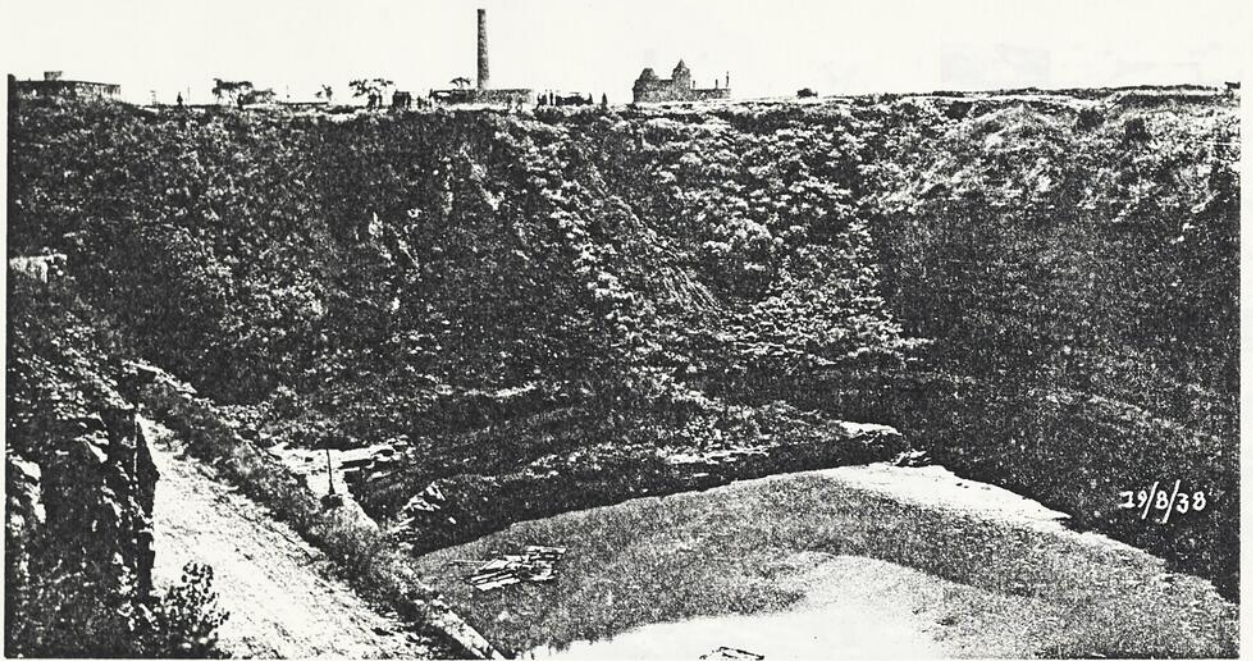


Fig. 129 Carrière Martineau
1938.

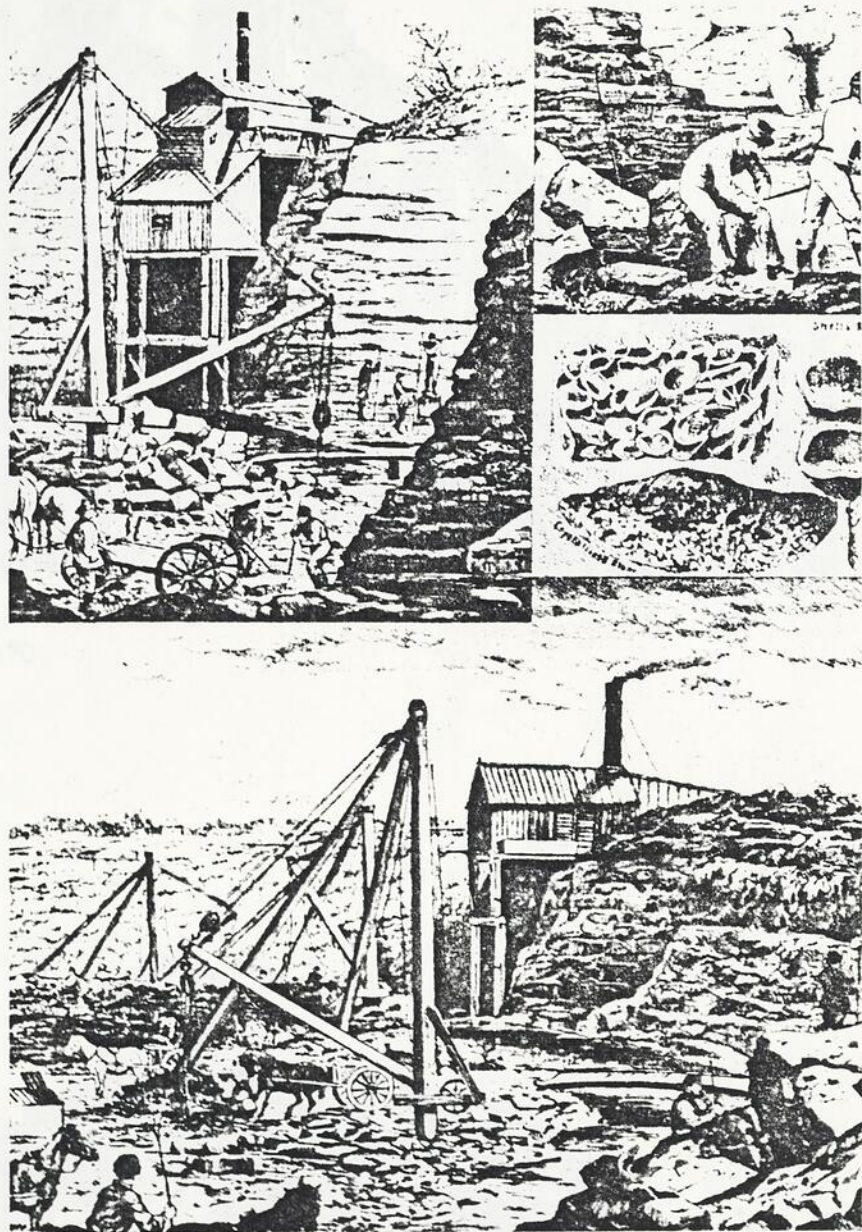


Fig. 130 Les carrières de
Montréal, 1877.



Fig. 131 Maison 3566-3670
Durocher.

Fig. 132 Maison 1334-1300
Sainte-Catherine O.





Fig. 133 Maison 1262-1250
Saint-Mathieu.



Fig. 134 Maison 2085 Tupper.

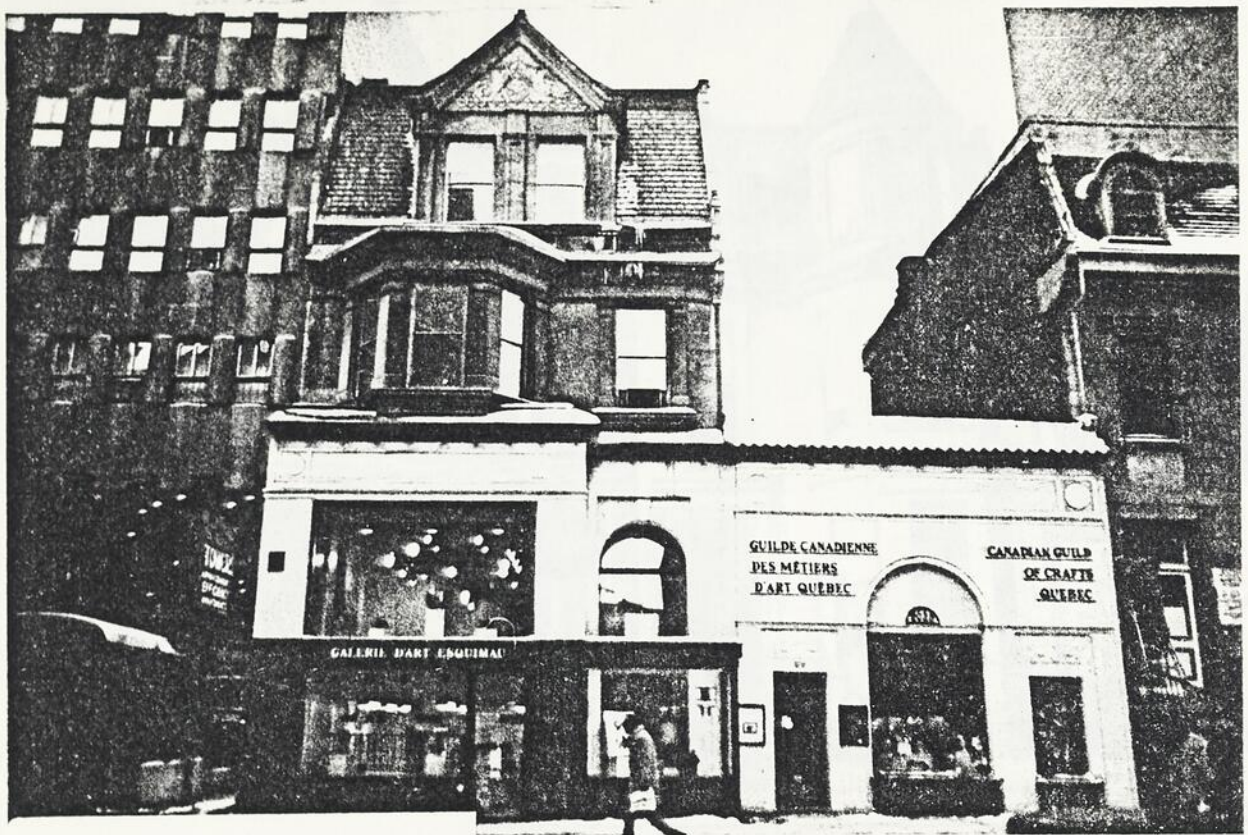


Fig. 135 Maison 2027-2029
Peel.



Fig. 136 Maison 620-640
Prince-Arthur.



Fig. 137 Maison 1233-5
Dorchester O.



Fig. 138 Maison 1179-1197
Crescent.

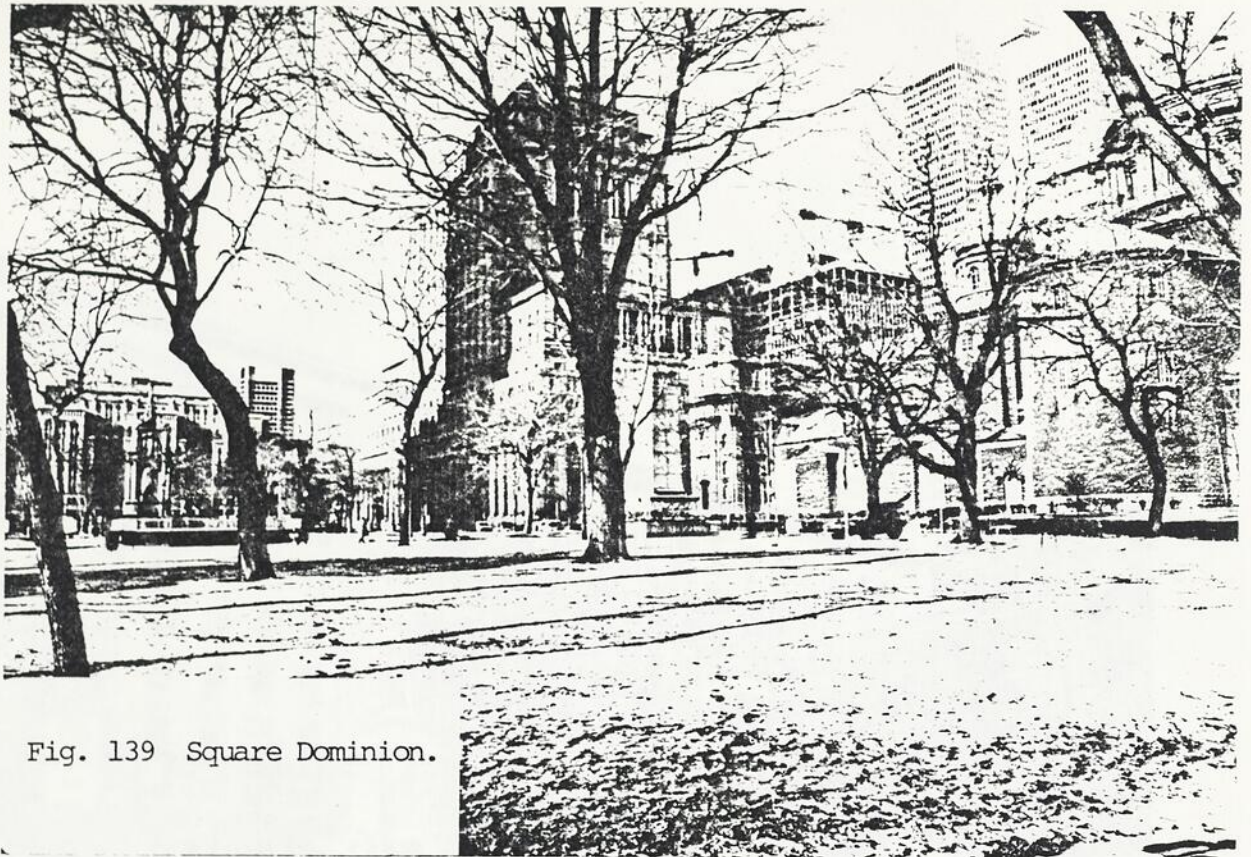


Fig. 139 Square Dominion.



Fig. 140 Parc Cabot.



Fig. 141 Square Phillips.

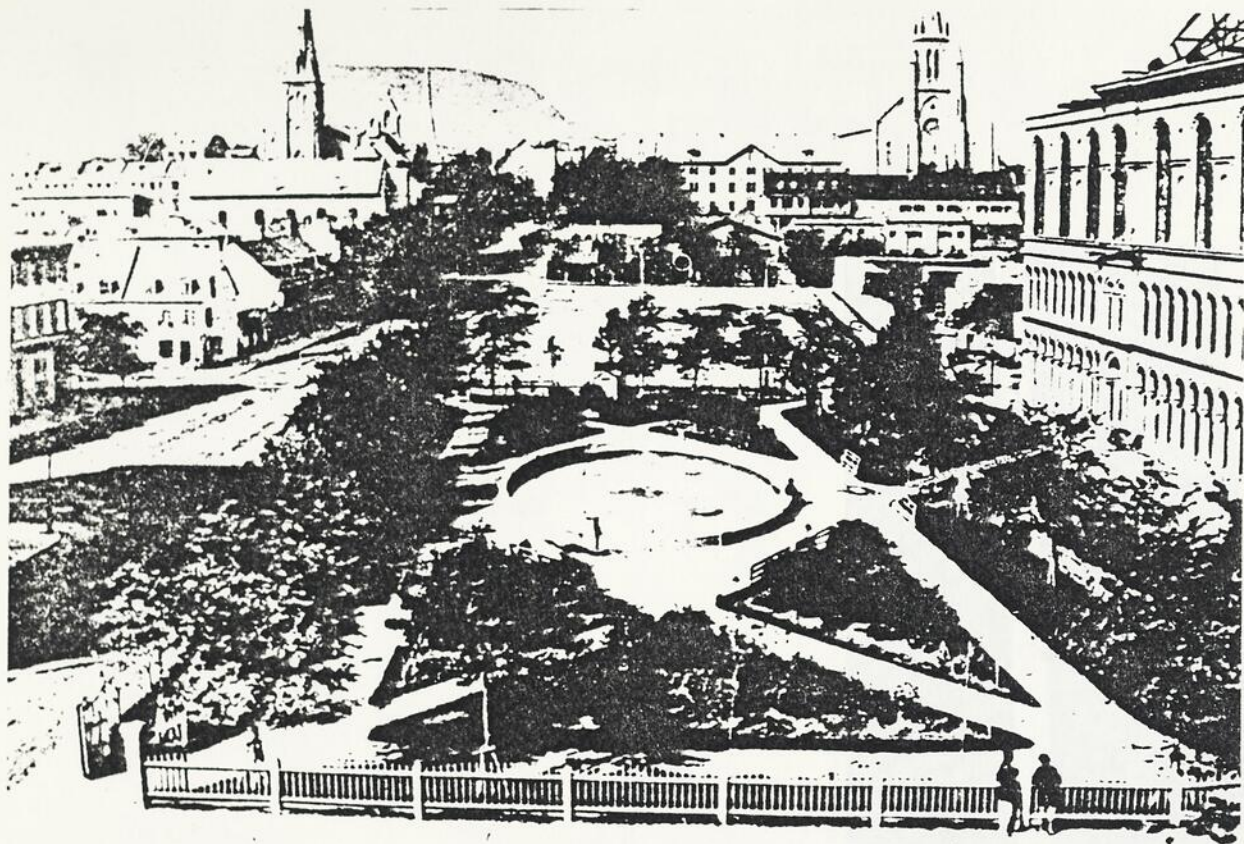


Fig. 142 Square Victoria,
c. 1863.



Fig. 143 Square Victoria,
c. 1920.



Fig. 144 Square Victoria.

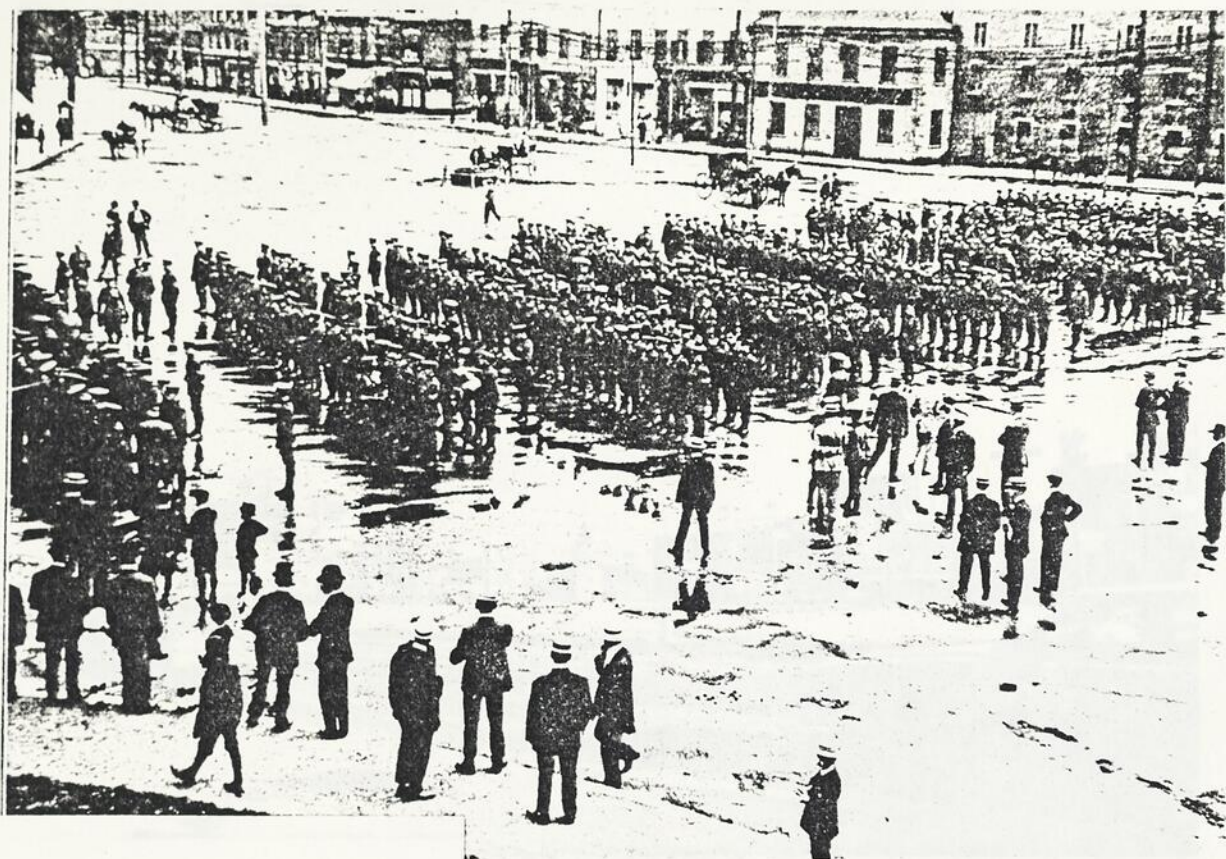


Fig. 145 Square Chaboilley,
1910.



Fig. 146 Square Chaboilley,
1953.



Fig. 147 Square Chaboilley.



Fig. 148 Square Richmond.



Fig. 149 Rue Saint-Mathieu.

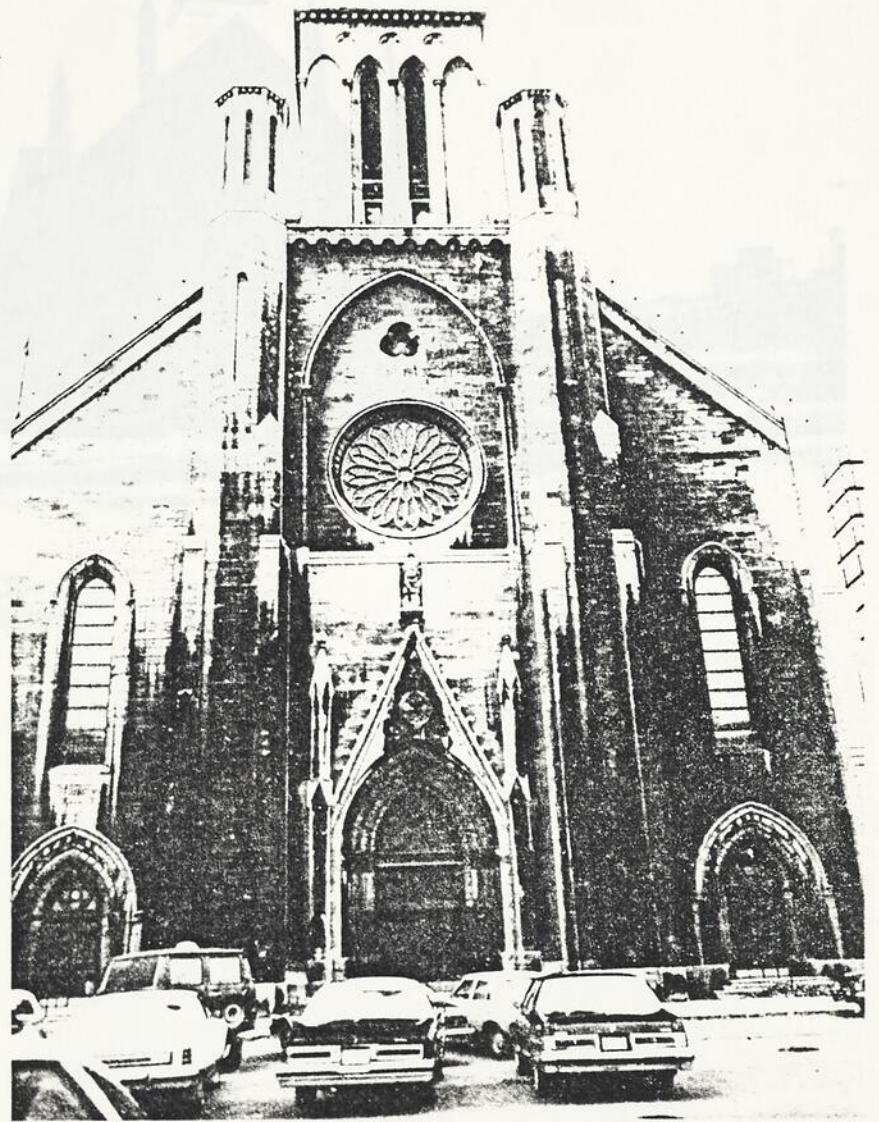


Fig. 150 Eglise Saint-Patrick, 460 Dorchester O.



Fig. 151 Eglise Saint-Jo-
seph de Montréal, 540 Rich-
mond.

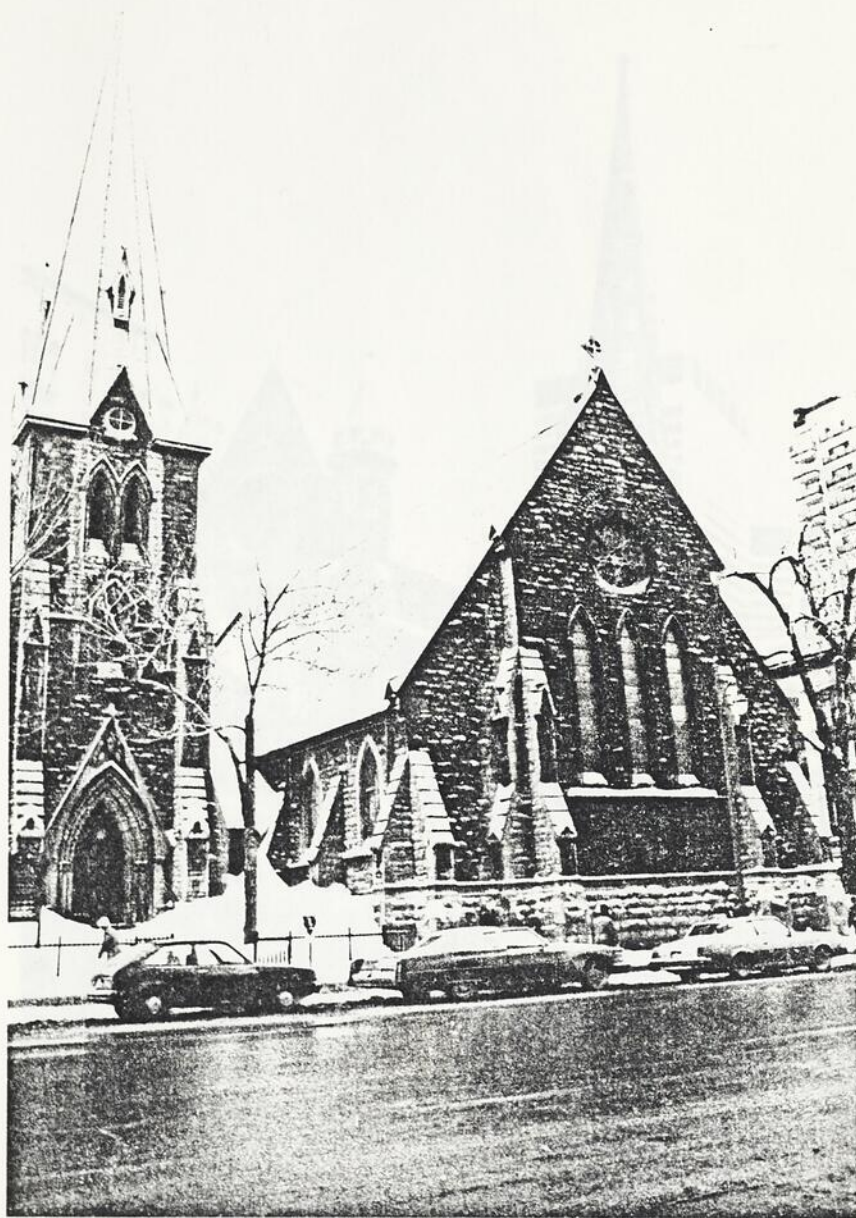


Fig. 152 Eglise Saint-James
the Apostle, 1439 Sainte-
Catherine O.

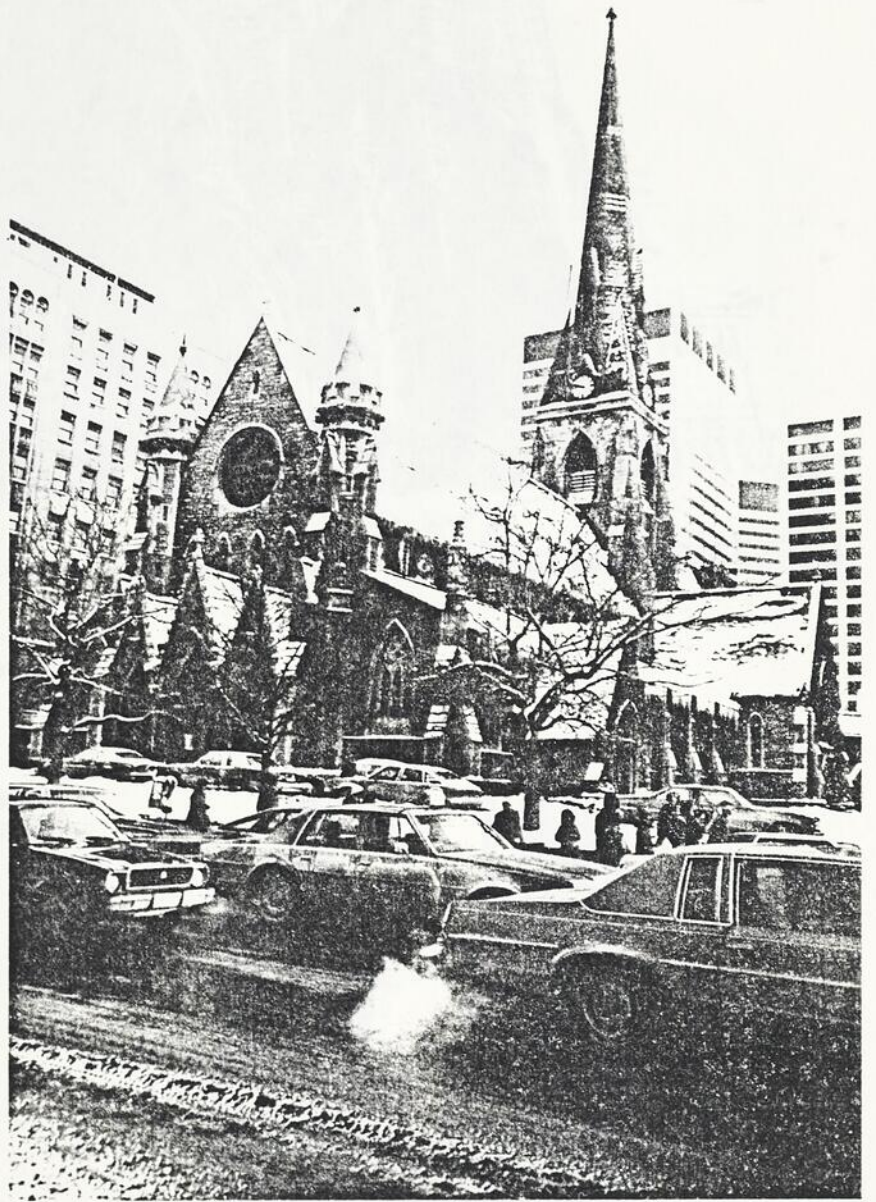


Fig. 153 Christ Church Cathedral, 1440 Union.

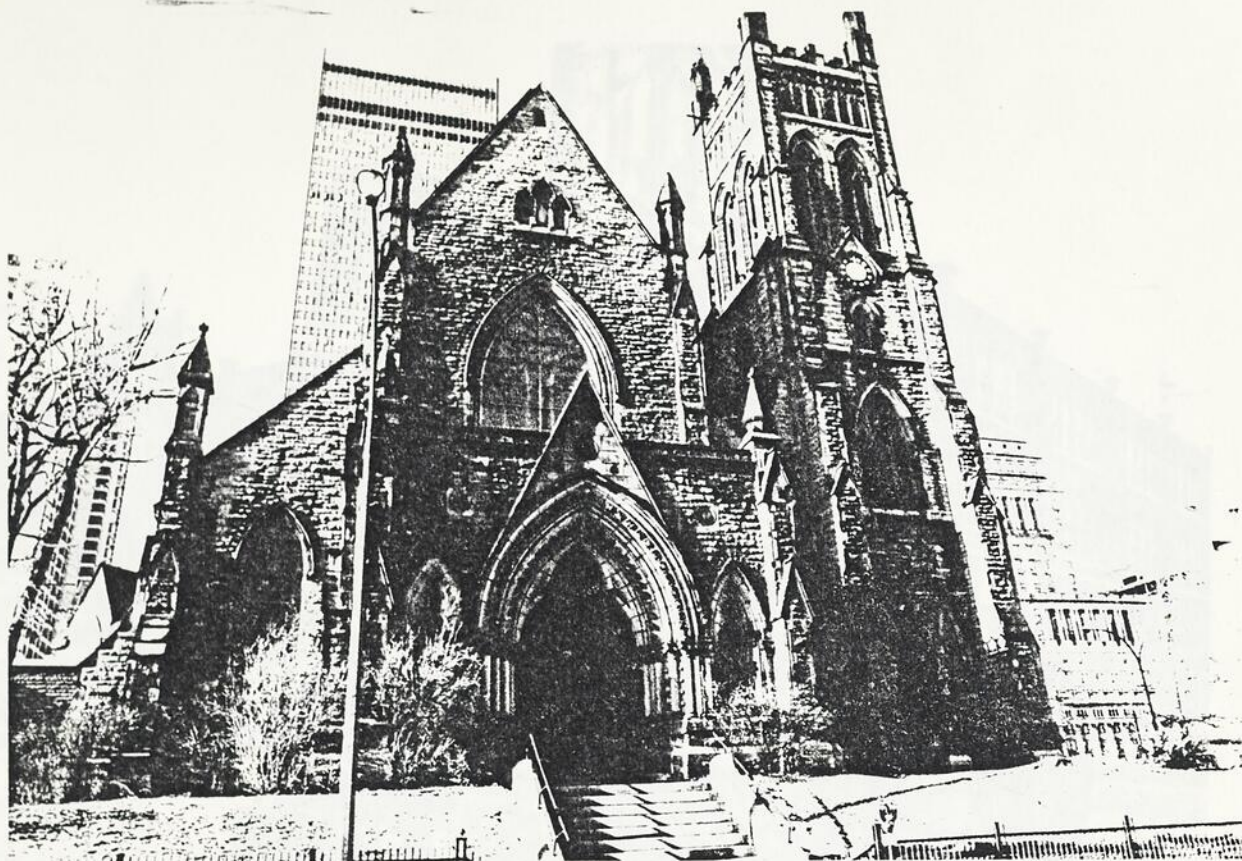


Fig. 154 Eglise Saint-Georges, 1101 Stanley.

Fig. 155 Saint-James Methodist Church, 463 Sainte-Catherine O., 1910.





Fig. 156 Saint-James Methodist Church, 463 Sainte-Catherine O.

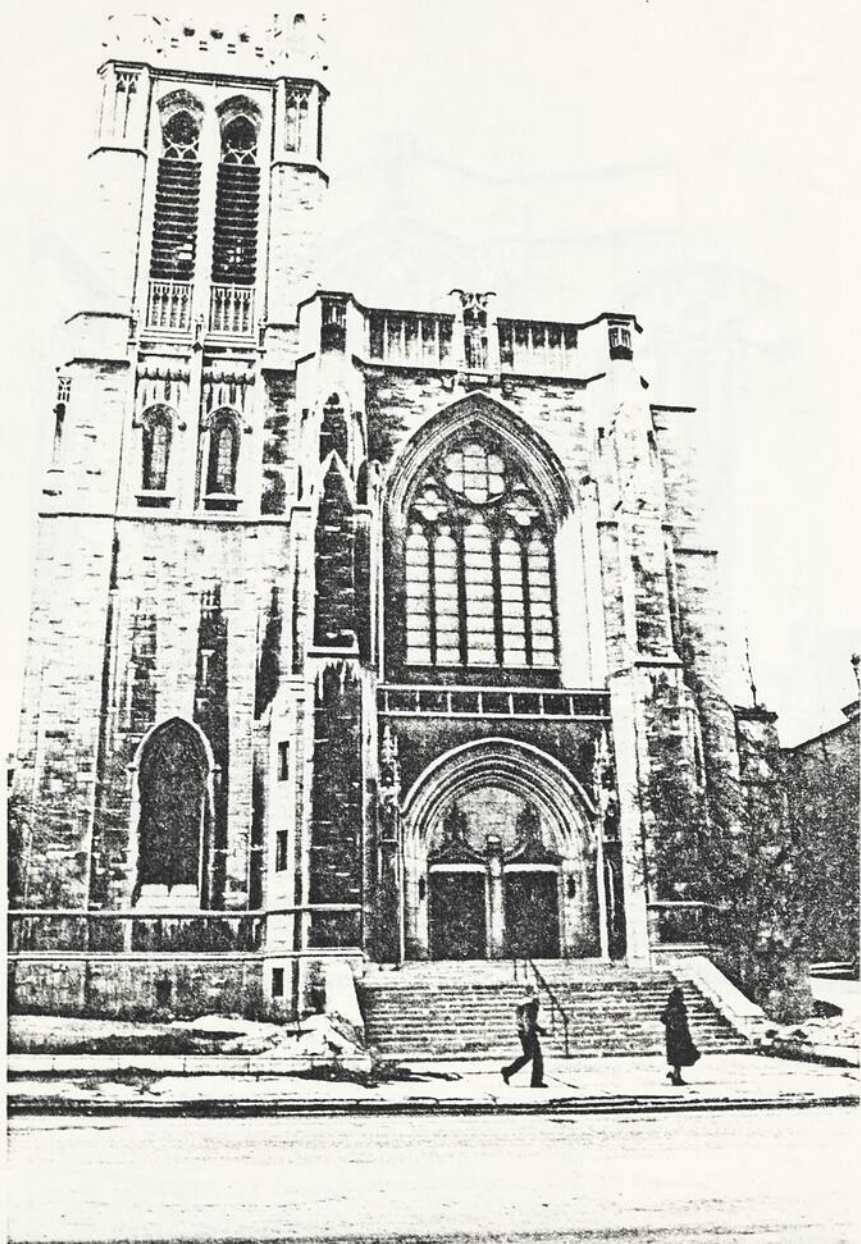


Fig. 157 Saint-Andrew and
Saint-Paul Church, 3415
Redpath.



Fig. 158 Church of the Messiah, 1491 Sherbrooke O.

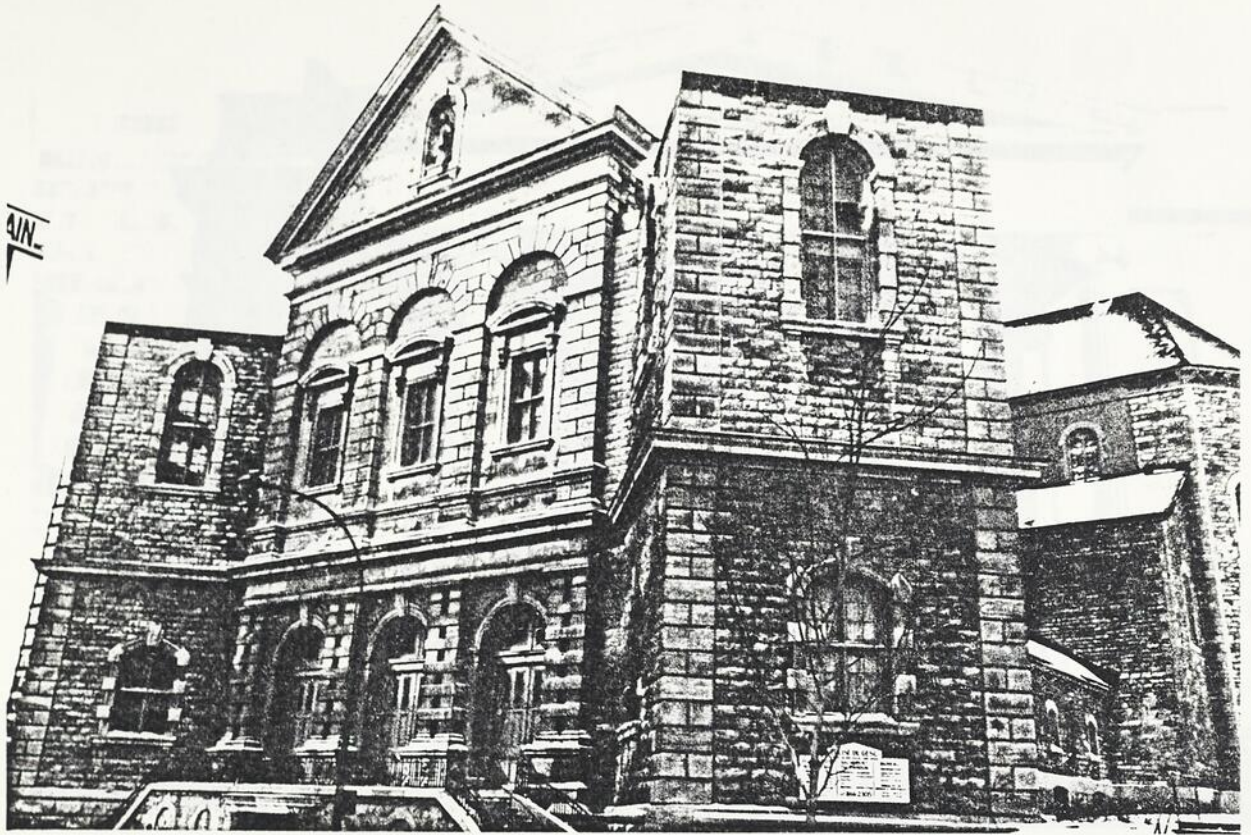


Fig. 159 Le Gesu, 1202
Bleury.



Fig. 160 Cathédrale Saint-
Jacques le Majeur, 1085 de
la Cathédrale, 1936.



Fig. 161 Emmanuel Congregational Church, 2085 Drummond.



Fig. 162 Masonic Memorial Temple, 1850 Sherbrooke O.

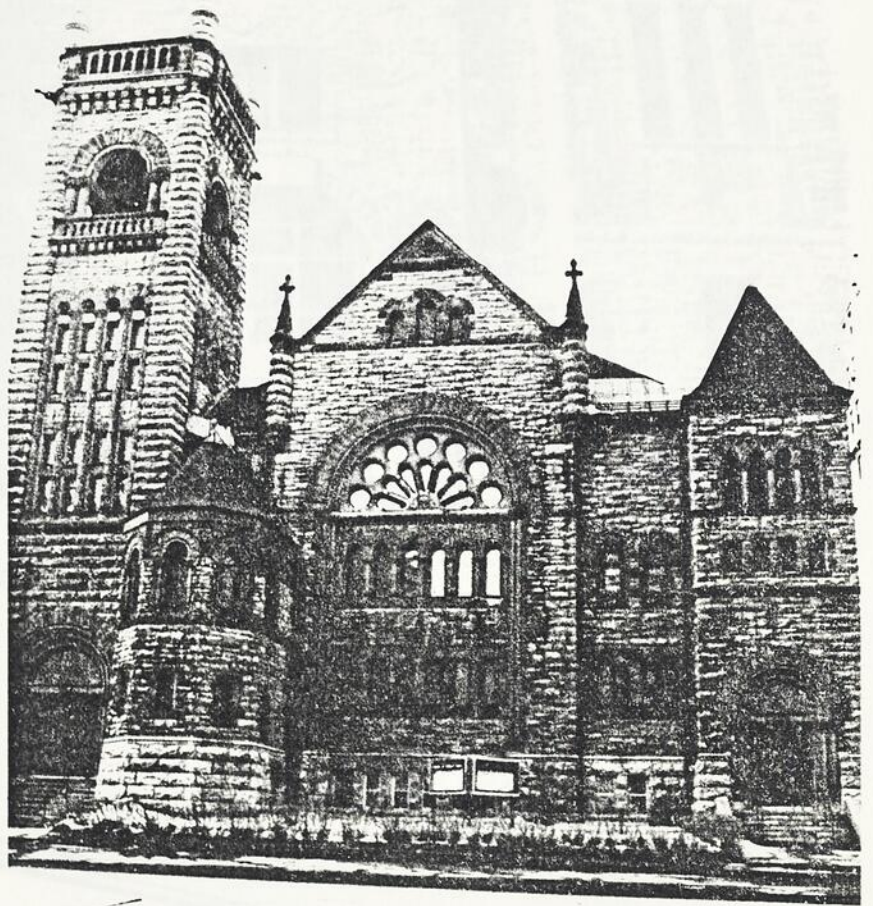


Fig. 163 Erskine and American United Church, 1339 Sherbrooke O.

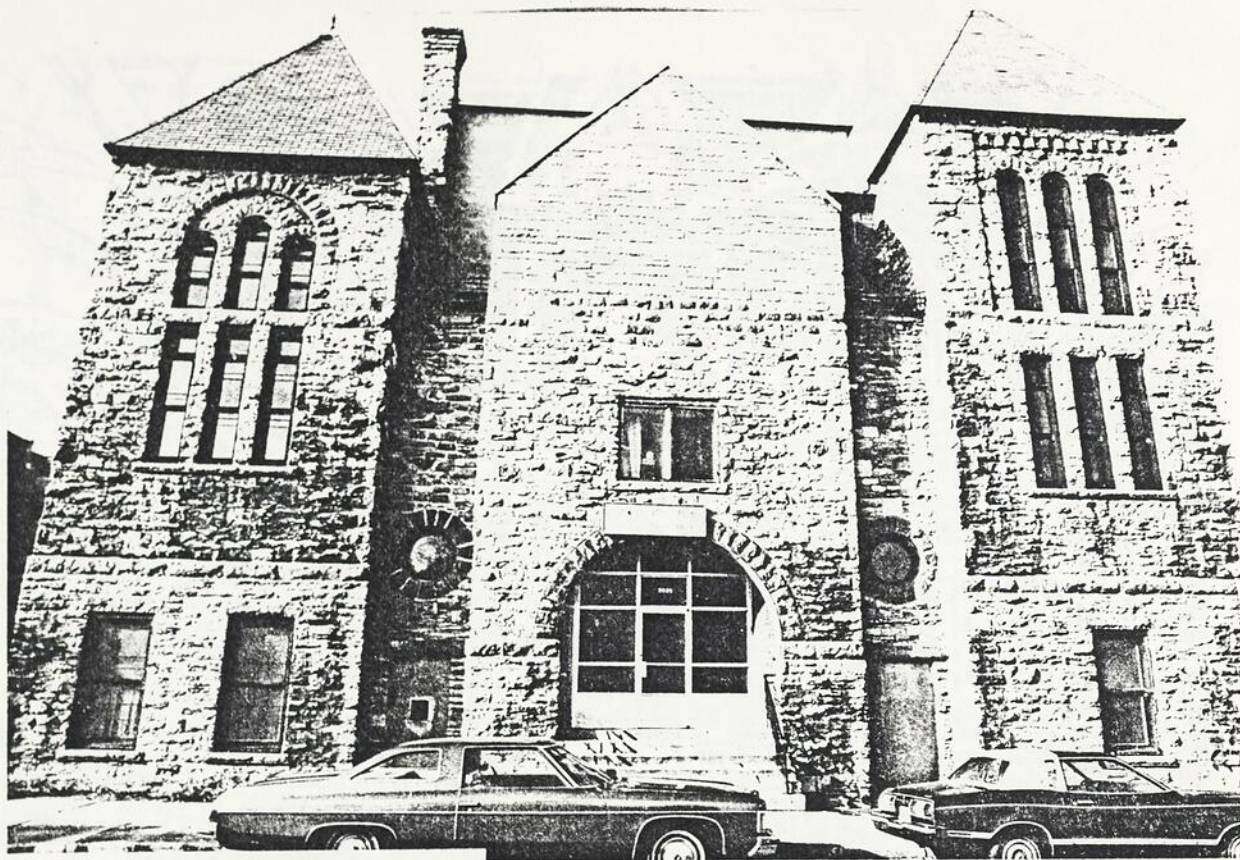


Fig. 164 Methodist Church,
2035 Coursol.



Fig. 165 Archaevêché de Mon-
tréal, 1071-1085 de la Cathé-
drale.

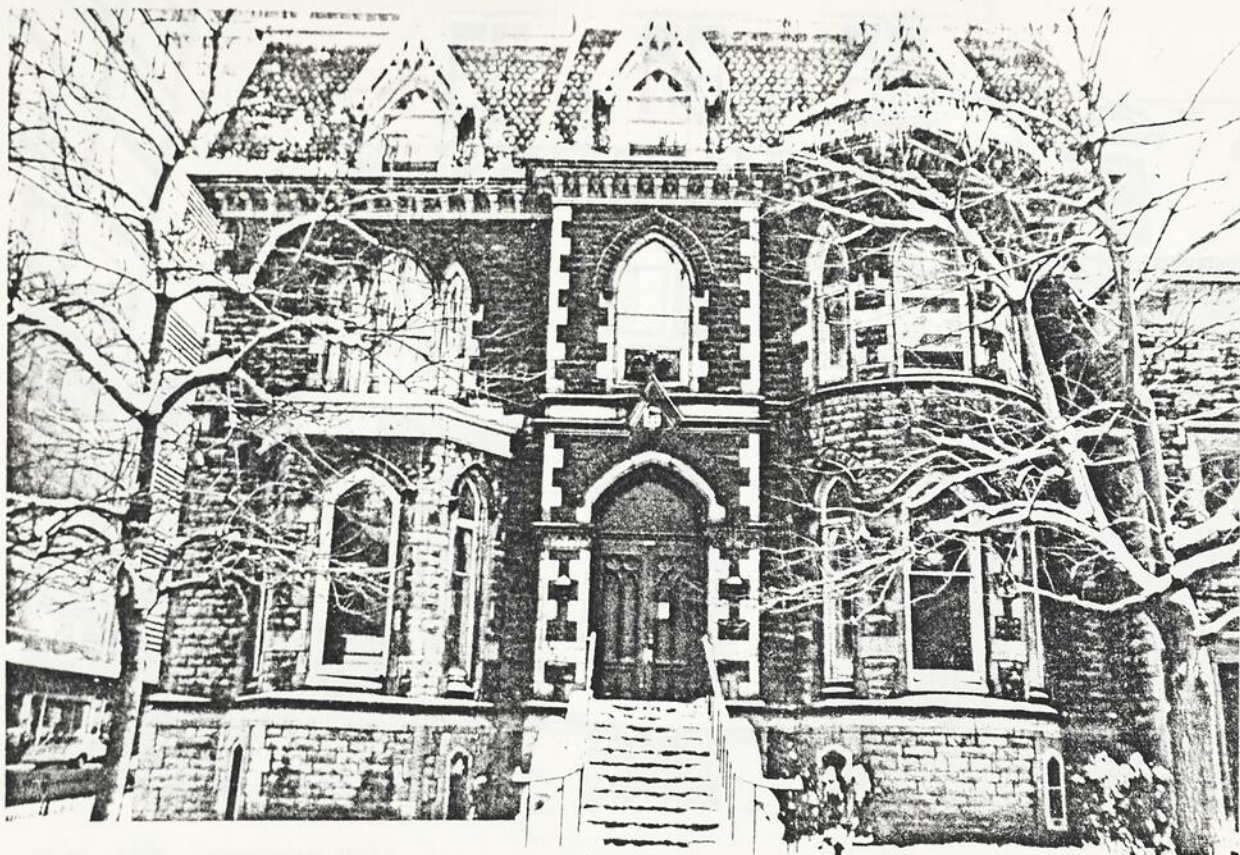


Fig. 166 Presbytère Christ Church, 1441 University.



Fig. 167 Presbytère Saint-Patrick, 460 Dorchester O.

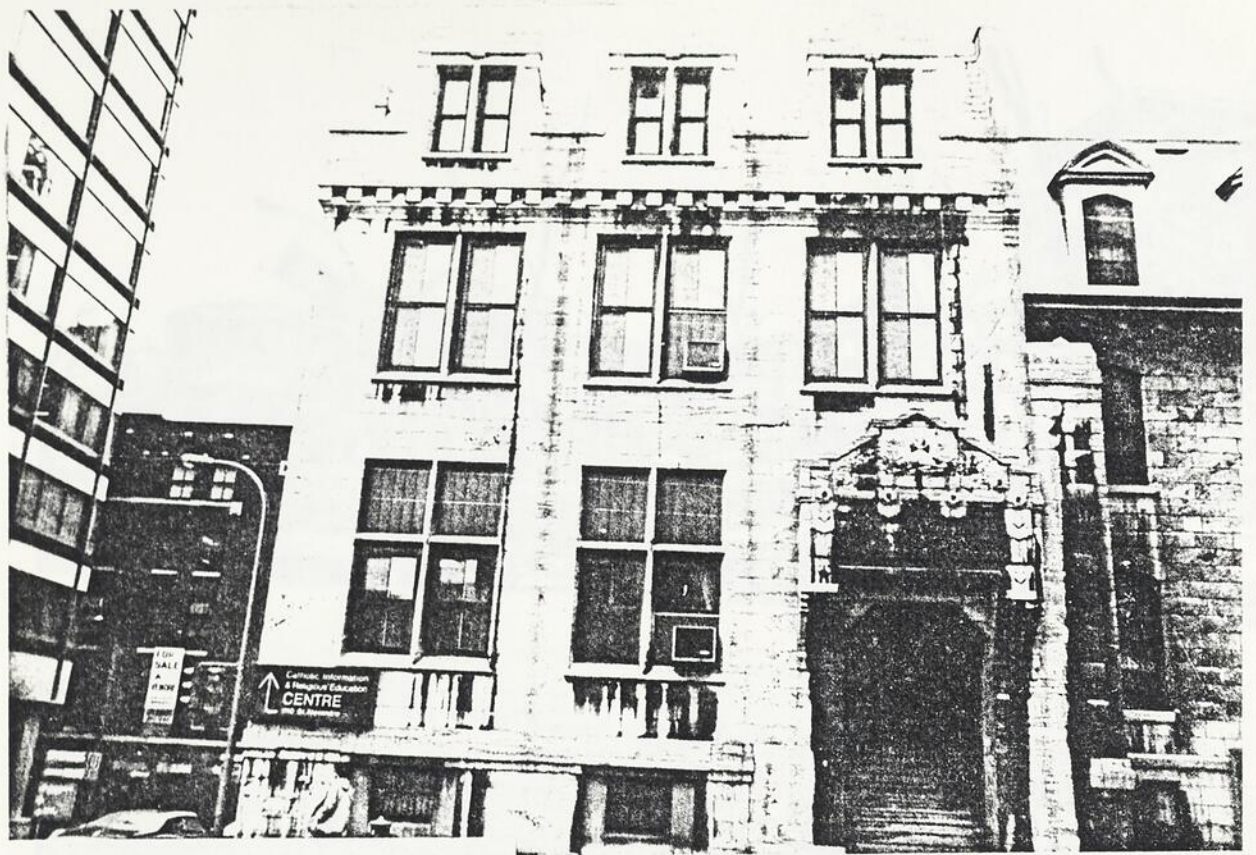


Fig. 168 Congress Hall,
454 Dorchester O.



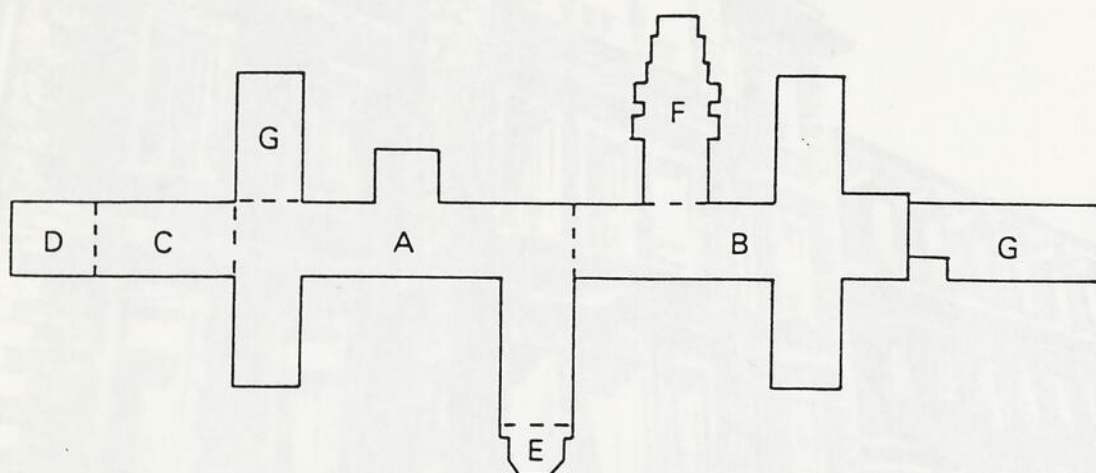
Fig. 169 Le Séminaire des
Sulpiciens, 2065 Sherbrooke
O., 1867.



Fig. 170 Le Séminaire des Sulpiciens, 2065 Dorchester O.

C. 1875-76 Henri Maurice Perreault
 D. 1876-77 Maurice Perreault
 E. 1878-79 René Caron
 1880-81 Jean Raymond
 F. 1881 René Maurice Perreault
 1882 Maurice Perreault
 G. Systèmes postérieurs à 1810.

Figure 171. Plan de l'égl. Séminaire des Sulpiciens.



- | | | | |
|----|----------------------------|--|--|
| A. | 1854-7 | John Ostell | |
| | c. 1875 | Henri Maurice Perrault | ajout d'un étage et
toit en mansarde |
| B. | 1868-71 | Henri Maurice Perrault | |
| C. | 1875-7 | Henri Maurice Perrault | |
| D. | 1900-2 | Maurice Perrault | |
| E. | 1854-7 | John Ostell | |
| | 1903-7 | Omer Marchand | modification et agran-
dissement de la cha-
pelle. |
| F. | 1881 | Henri Maurice Perrault
et/ou Maurice Perrault | |
| G. | Ajouts postérieurs à 1930. | | |

Figure 171: Plan au sol, Séminaire des Sulpiciens.



Fig. 172 Quartiers généraux
de l'Armée, 3530 Atwater.

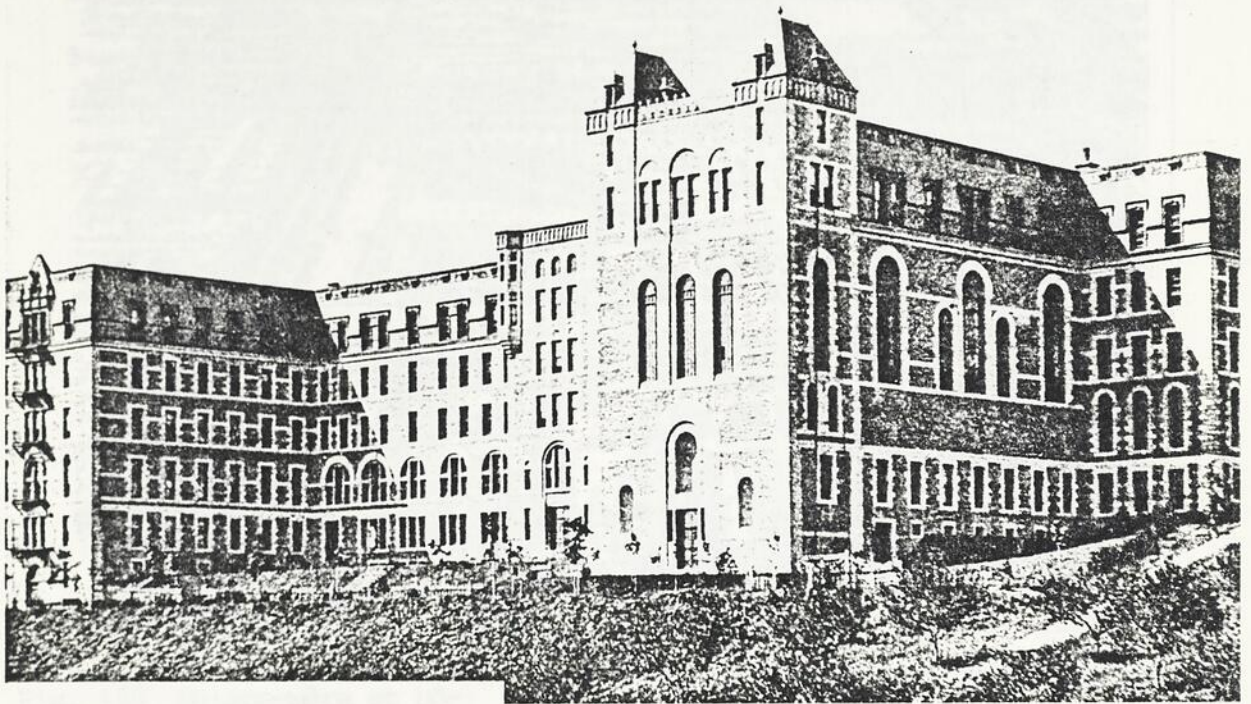
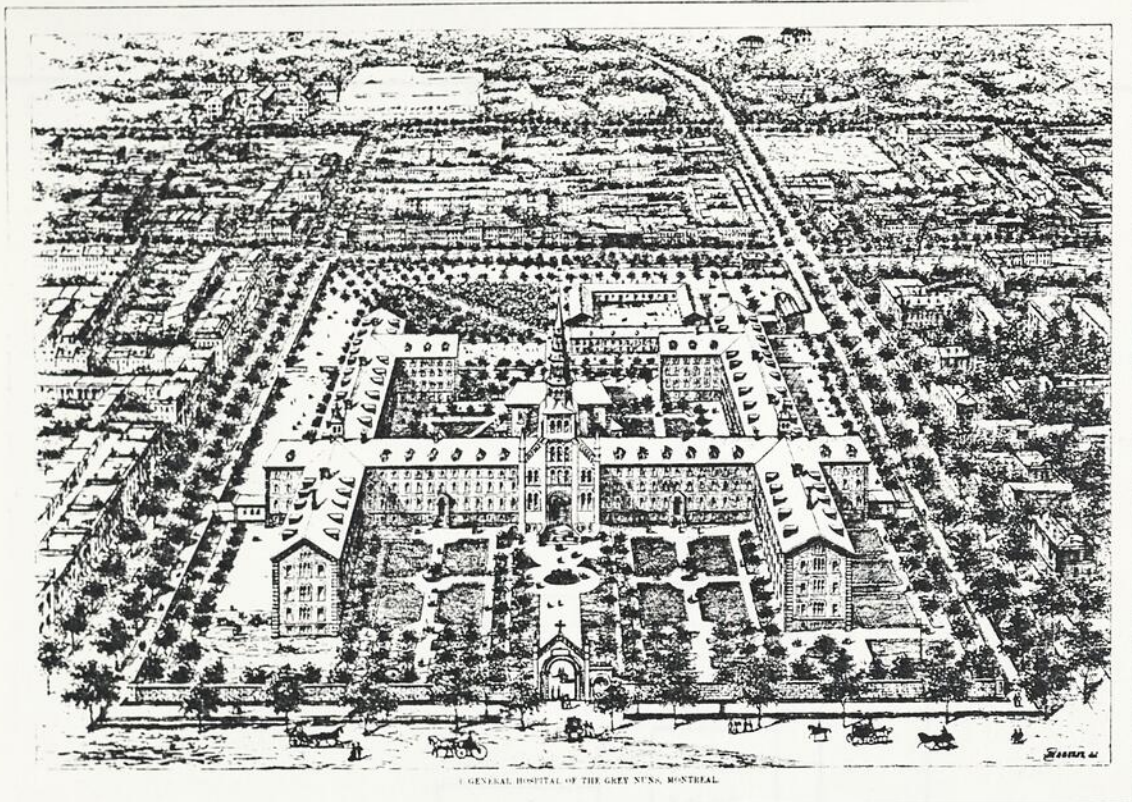


Fig. 173 Séminaire de philosophie, 3880 Côte-des-Neiges, 1898.



Fig. 174 L'Ermitage, 3510 Côte-des-Neiges.



GENERAL HOSPITAL OF THE GREY NUNS, MONTREAL.

From "Canadian Illustrated News", December 4, 1875, drawn and engraved by E. Haberer.

Fig. 175 Maison-mère et hôpital général des soeurs Grises, 1190 Guy, c. 1875.

Fig. 176 Maison-mère et hôpital général des soeurs Grises, 1190 Guy.



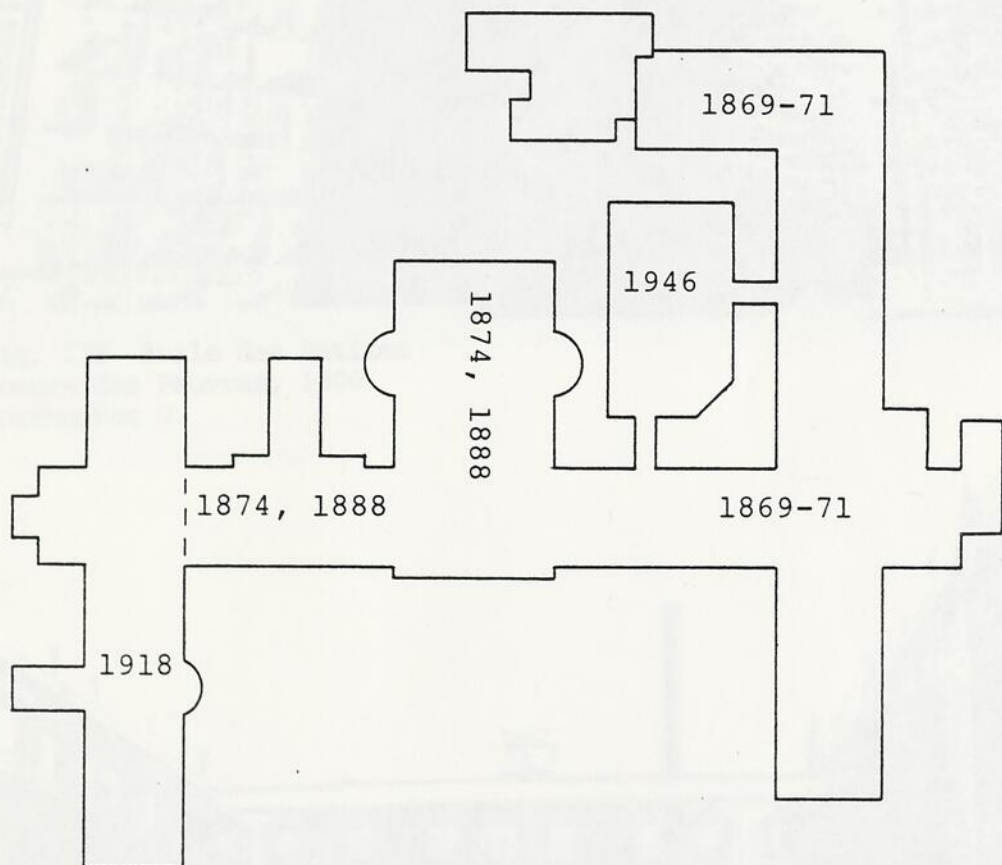


Figure 177: Plan au sol, maison-mère et hôpital général des soeurs Grises.

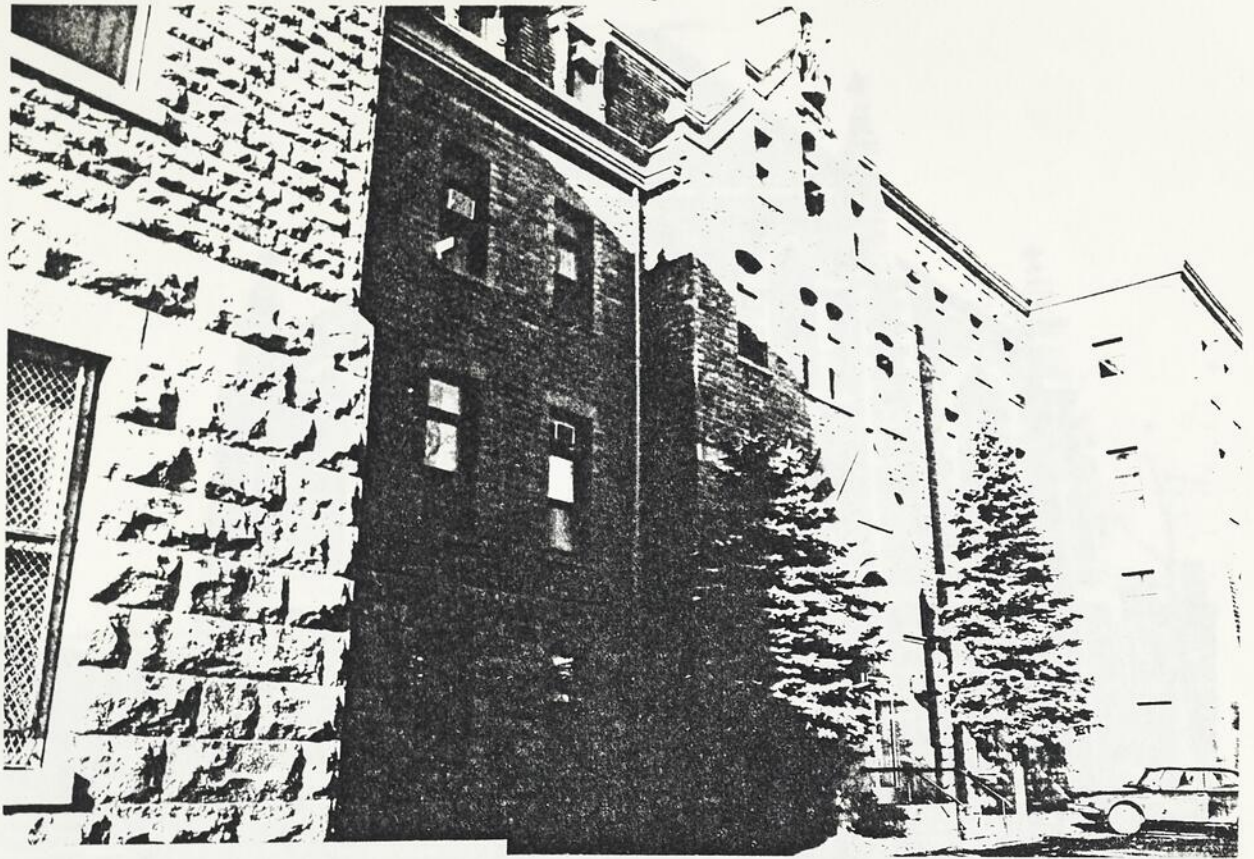


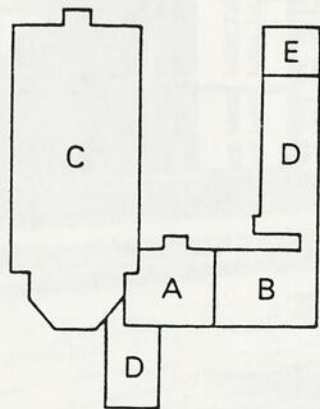
Fig. 178 Asile des Petites
soeurs des Pauvres, 1800
Dorchester O.



Fig. 179 Résidence des Fran-
ciscains, 2010 Dorchester O.



Fig. 180 Eglise Saint-François, 2010 Dorchester O.



A.	Maison Judah	c. 1830		
		1892	Louis Resther et J.B. Resther	ajout d'un étage
B.		1892	Louis Resther et J.B. Resther	
C.	Eglise Saint- François	1892-1901	J.B. Resther	
D.		1898	Hiral	
		1908		ajout d'un étage
E.	ajout posté- rieur à 1930.			

Figure 181: Plan au sol, Résidence des Franciscains.

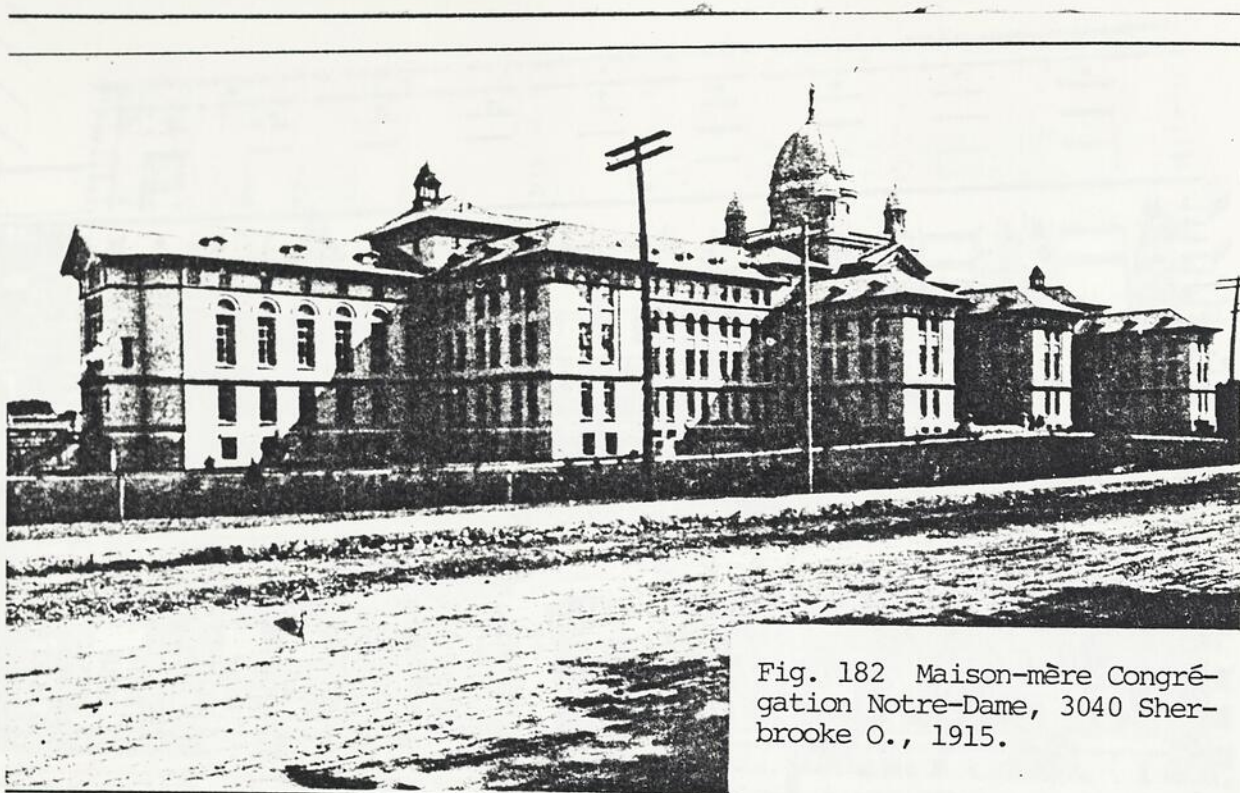


Fig. 182 Maison-mère Congrégation Notre-Dame, 3040 Sherbrooke O., 1915.

MOTHER HOUSE OF THE CONVENT OF THE CONGREGATION OF NOTRE DAME,
Sherbrooke Street West from which was destroyed a part of the building.



Fig. 183 Maison-mère Petites filles de Saint-Joseph, 2335 Sherbrooke O.

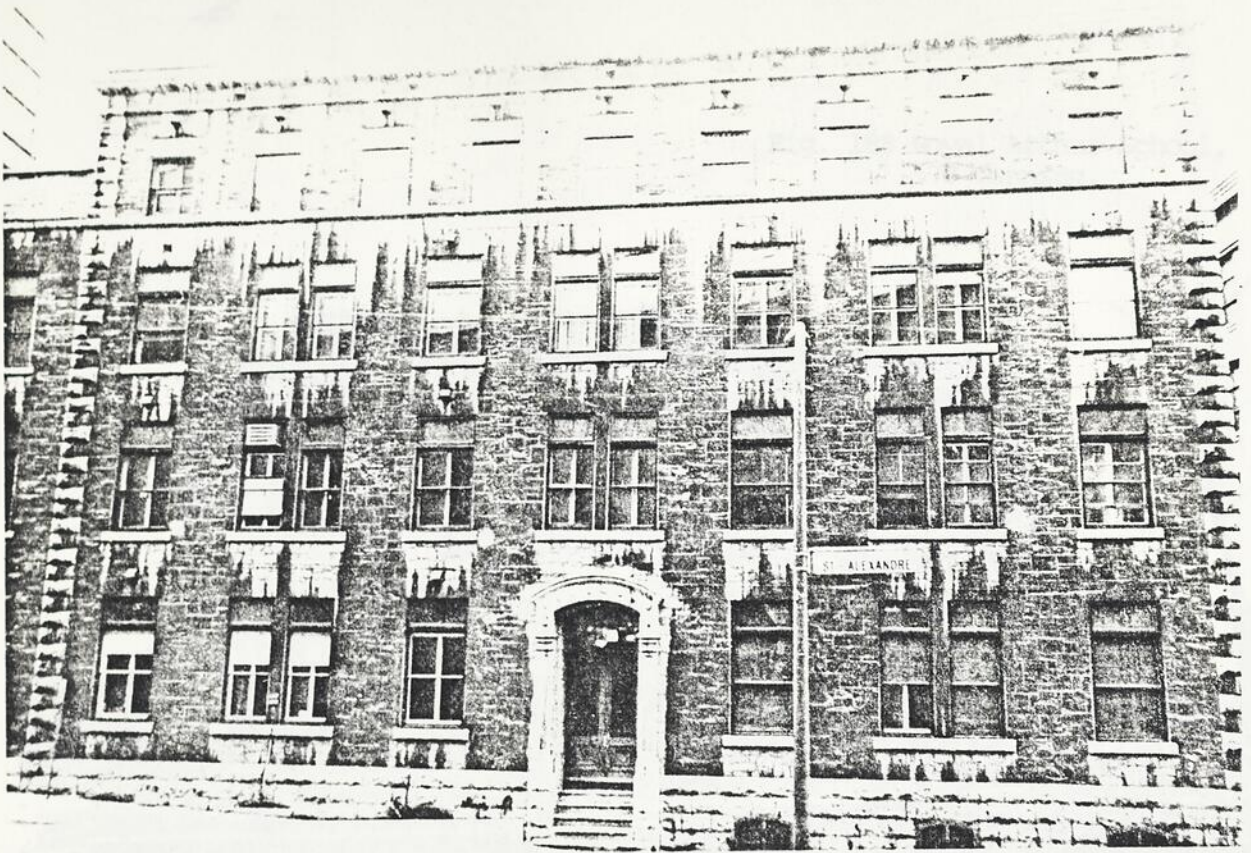


Fig. 184 Académie Saint-Patrick, 1095 Saint-Alexandre.



Fig. 185 Victoria School, 1822 de Maisonneuve O.

Fig. 188 Royal Arthur School,
570 Canning.

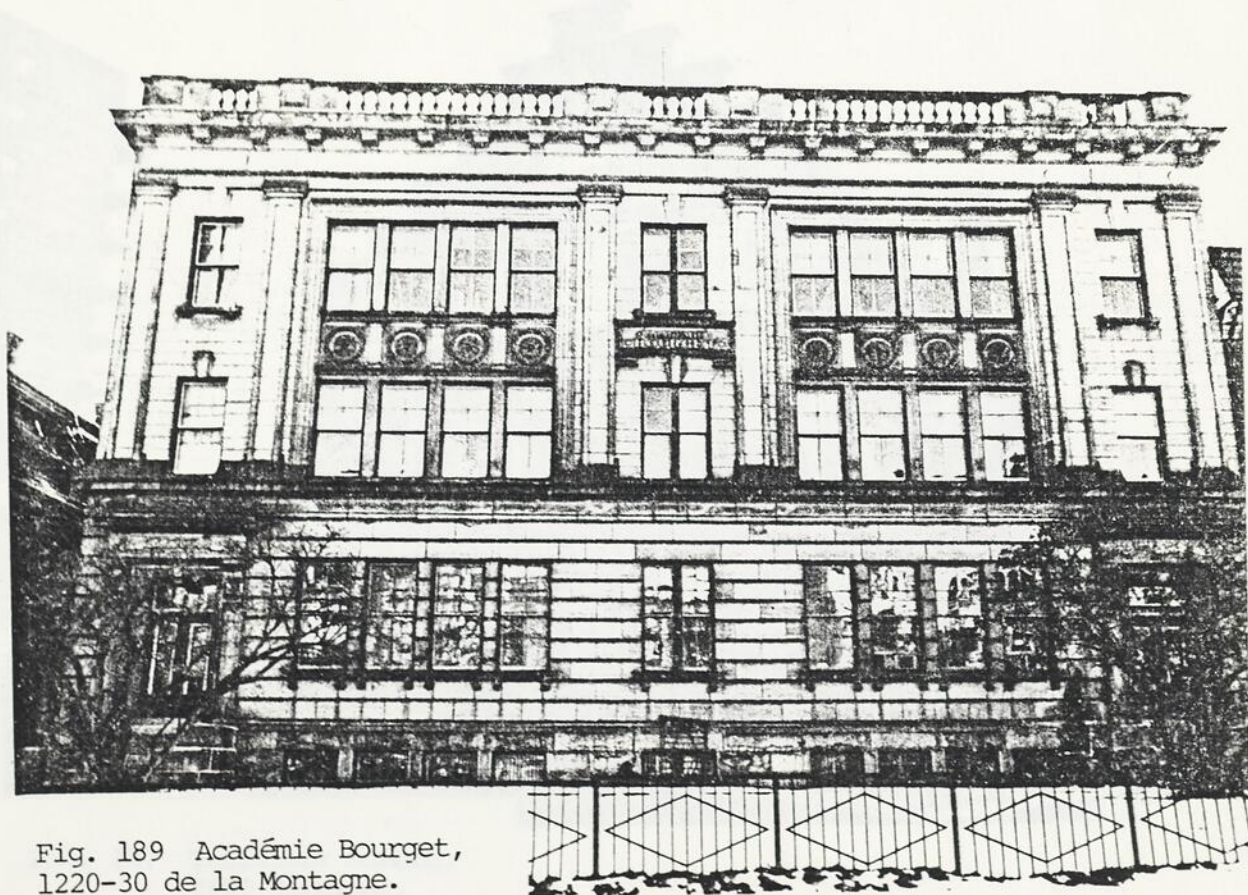


Fig. 189 Académie Bourget,
1220-30 de la Montagne.

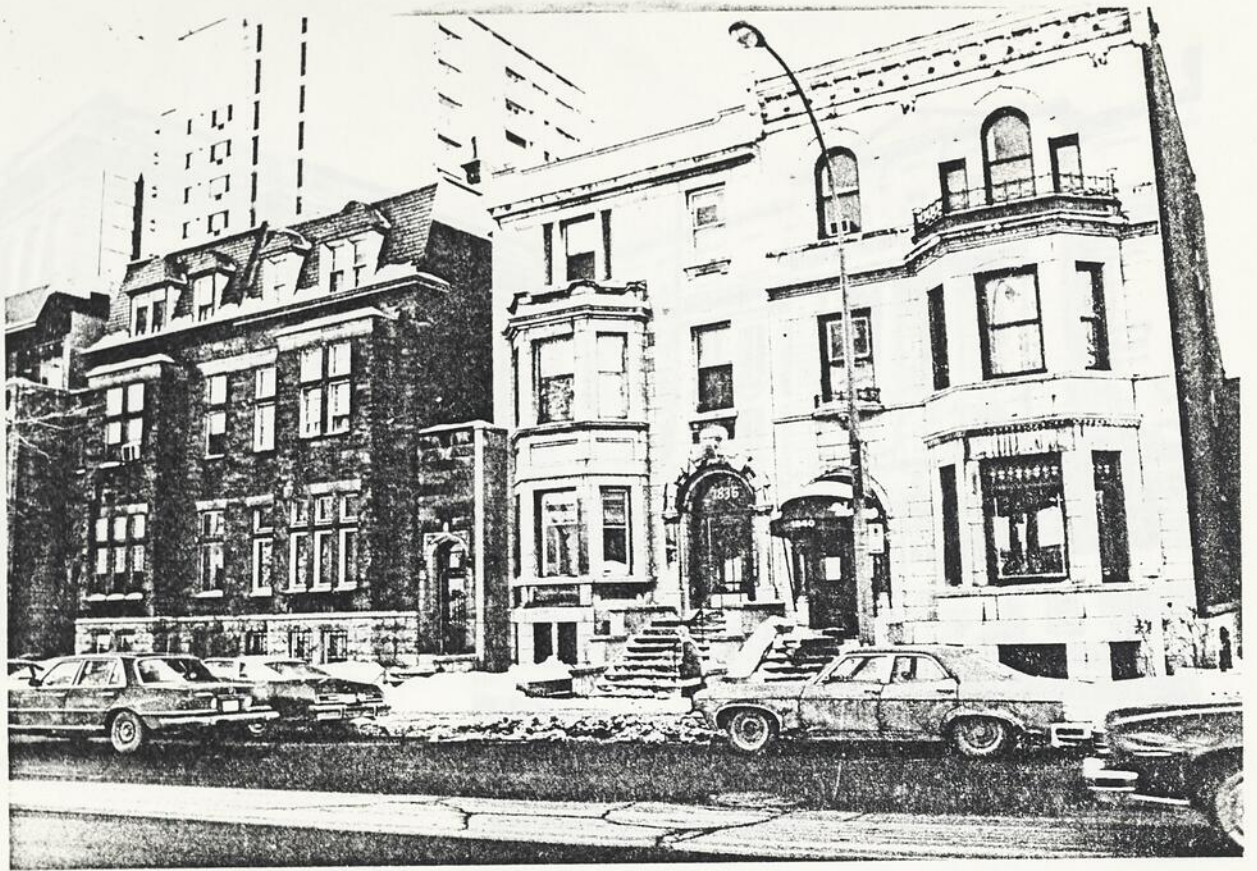


Fig. 186 Crichton School
(bâtiment de gauche)
1826 Sherbrooke O.



Fig. 187 Trafalgar School,
3495 Simpsons.

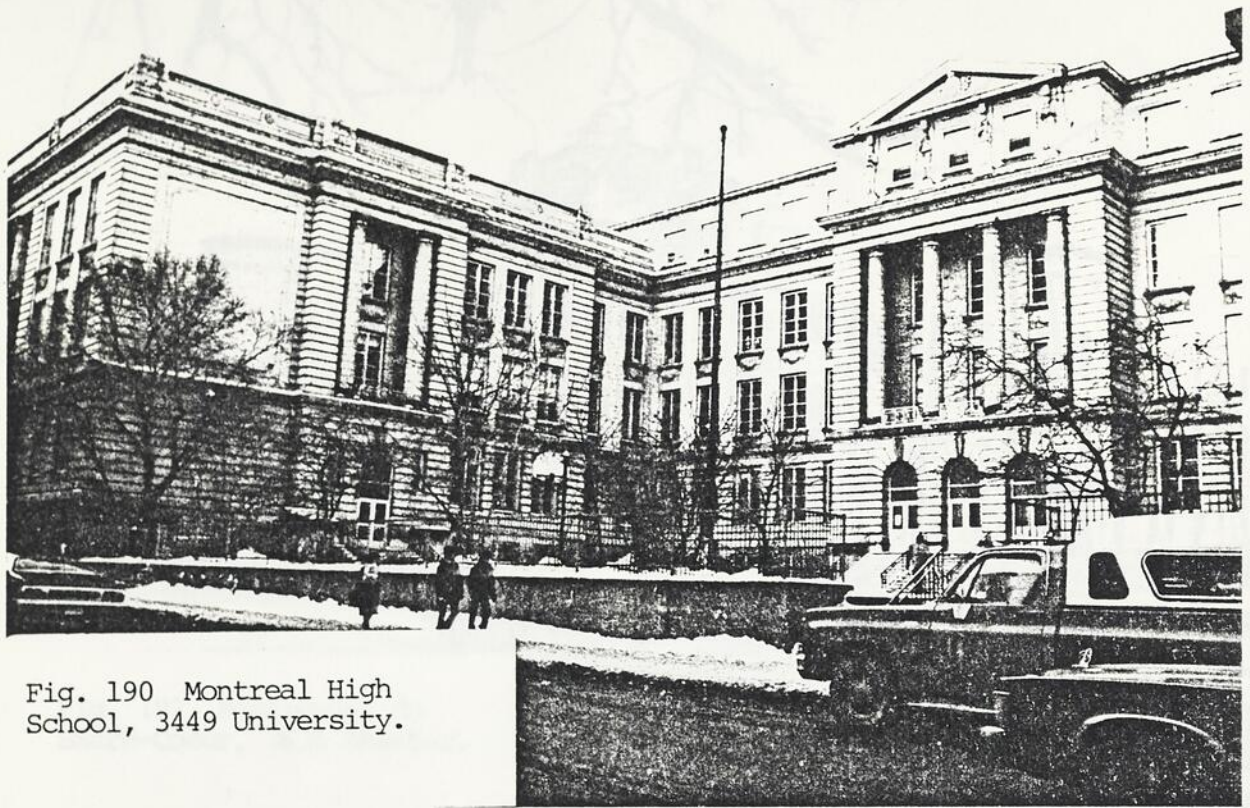


Fig. 190 Montreal High School, 3449 University.



Fig. 191 Ecole normale de la Congrégation Notre-Dame, 2330 Sherbrooke O.

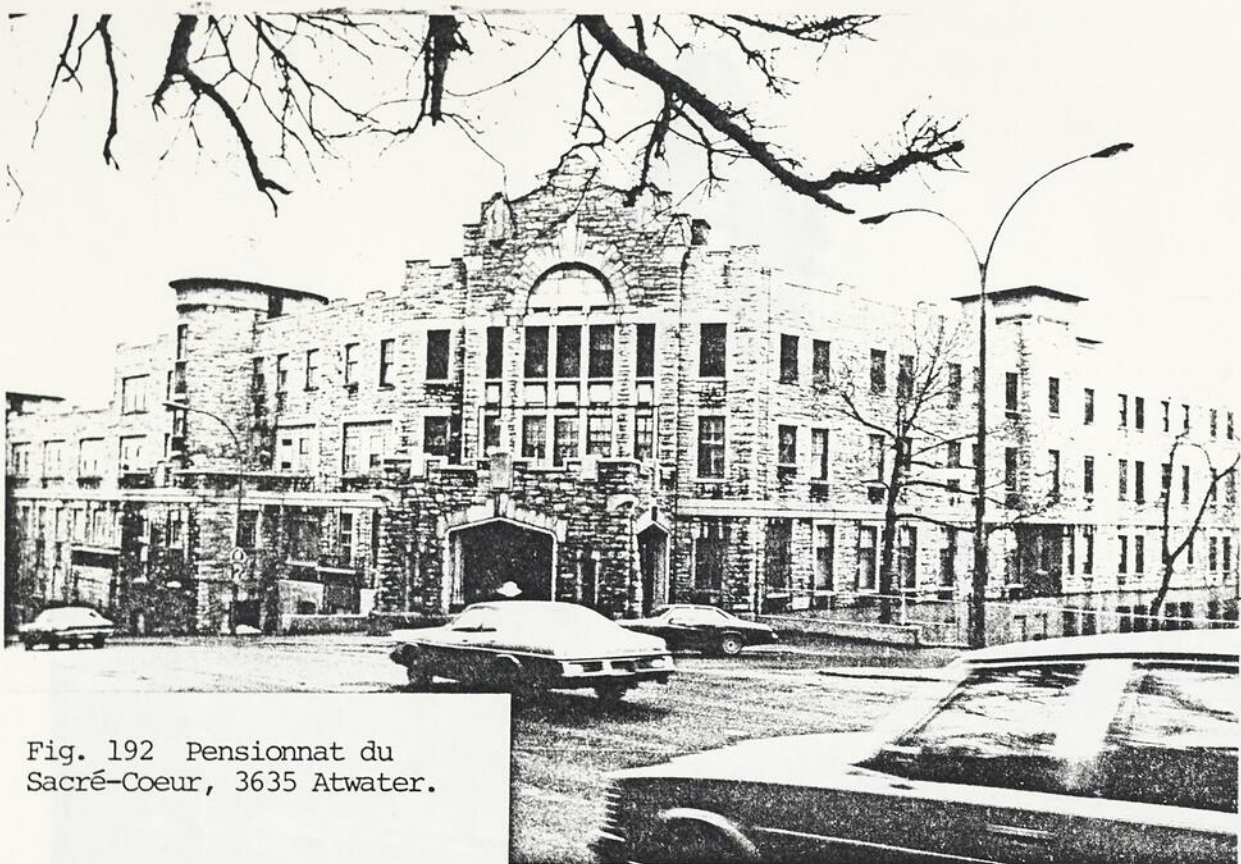


Fig. 192 Pensionnat du
Sacré-Coeur, 3635 Atwater.

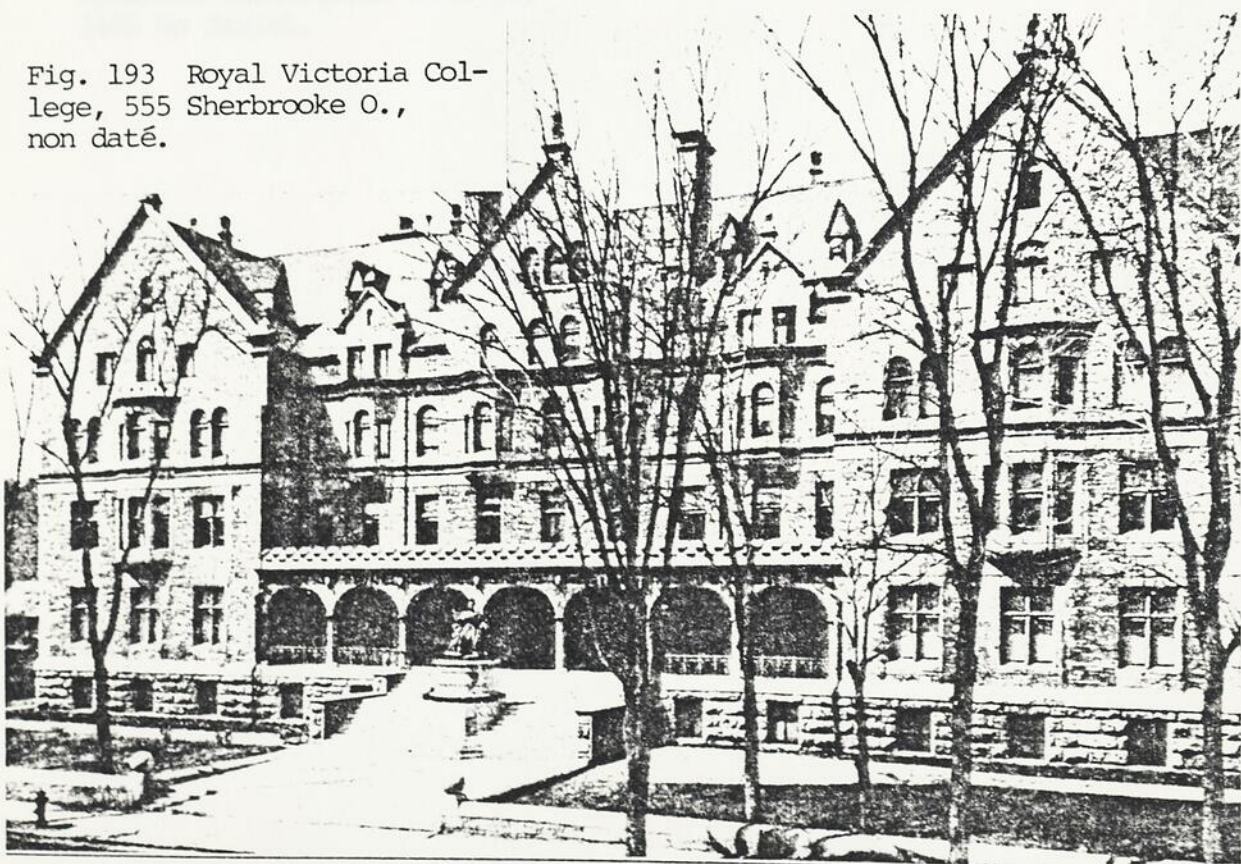


Fig. 193 Royal Victoria Col-
lege, 555 Sherbrooke O.,
non daté.



Fig. 194 Morrice Hall, Pres-
byterian Theological College,
3485 Mc Tavish.

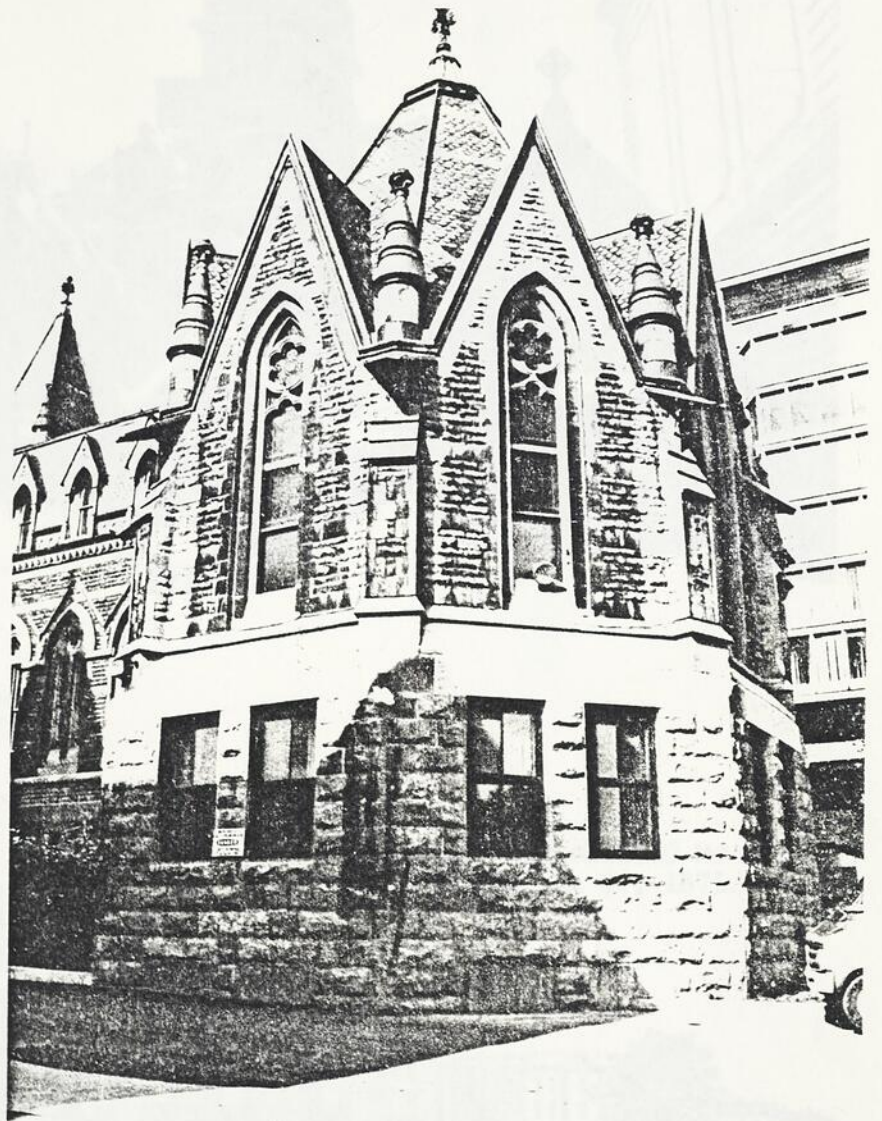


Fig. 195 Morrice Hall, Pres-
byterian Theological College,
(vue de l'arrière)



Fig. 196 Montreal Diocesan
Theological College, 3473
University.

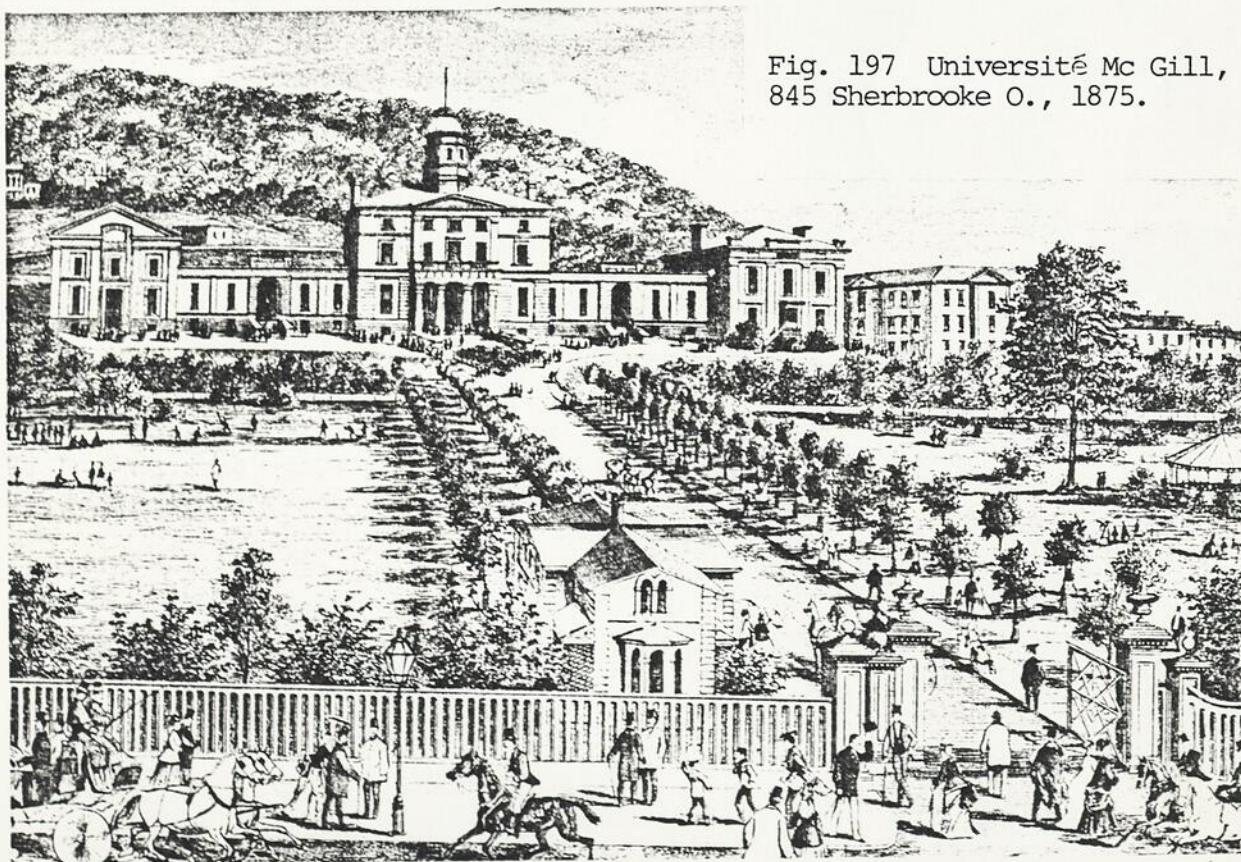


Fig. 197 Université Mc Gill,
845 Sherbrooke O., 1875.



Fig. 198 Mc Gill College
Building, Campus Université
Mc Gill.

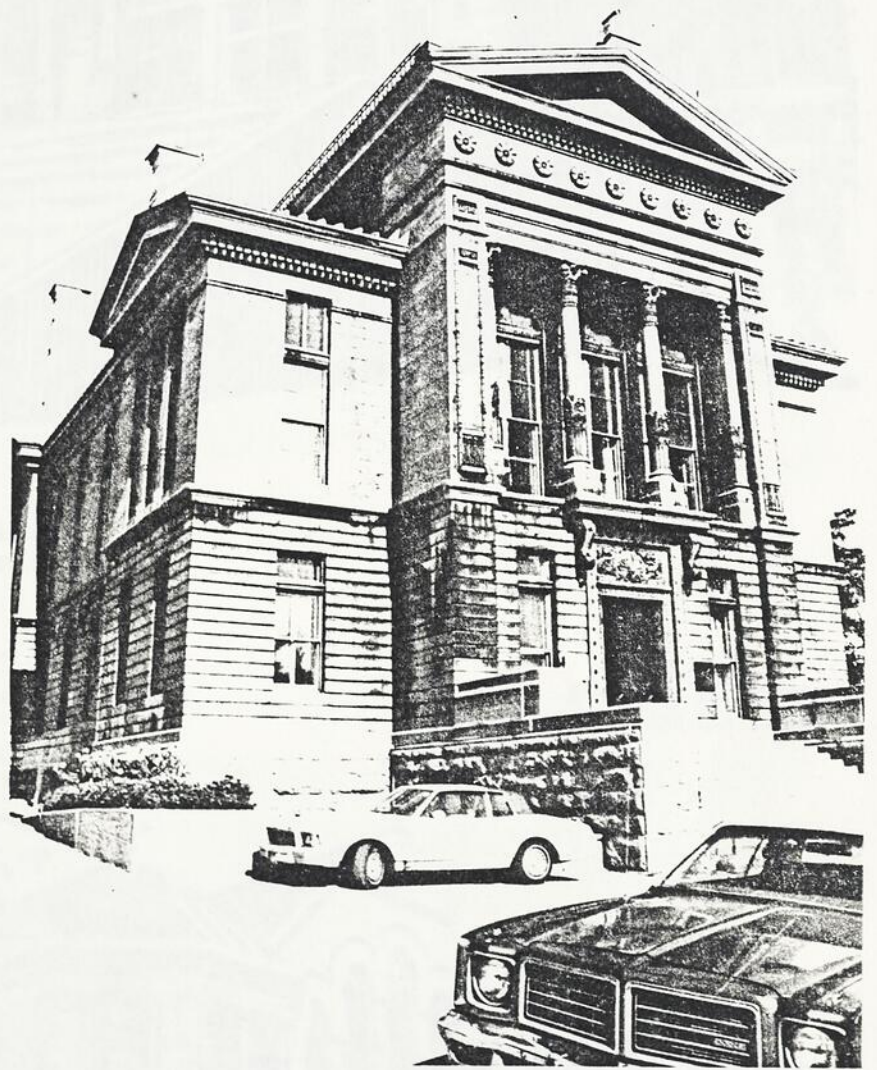


Fig. 199 Redpath Museum,
Campus Université Mc Gill.

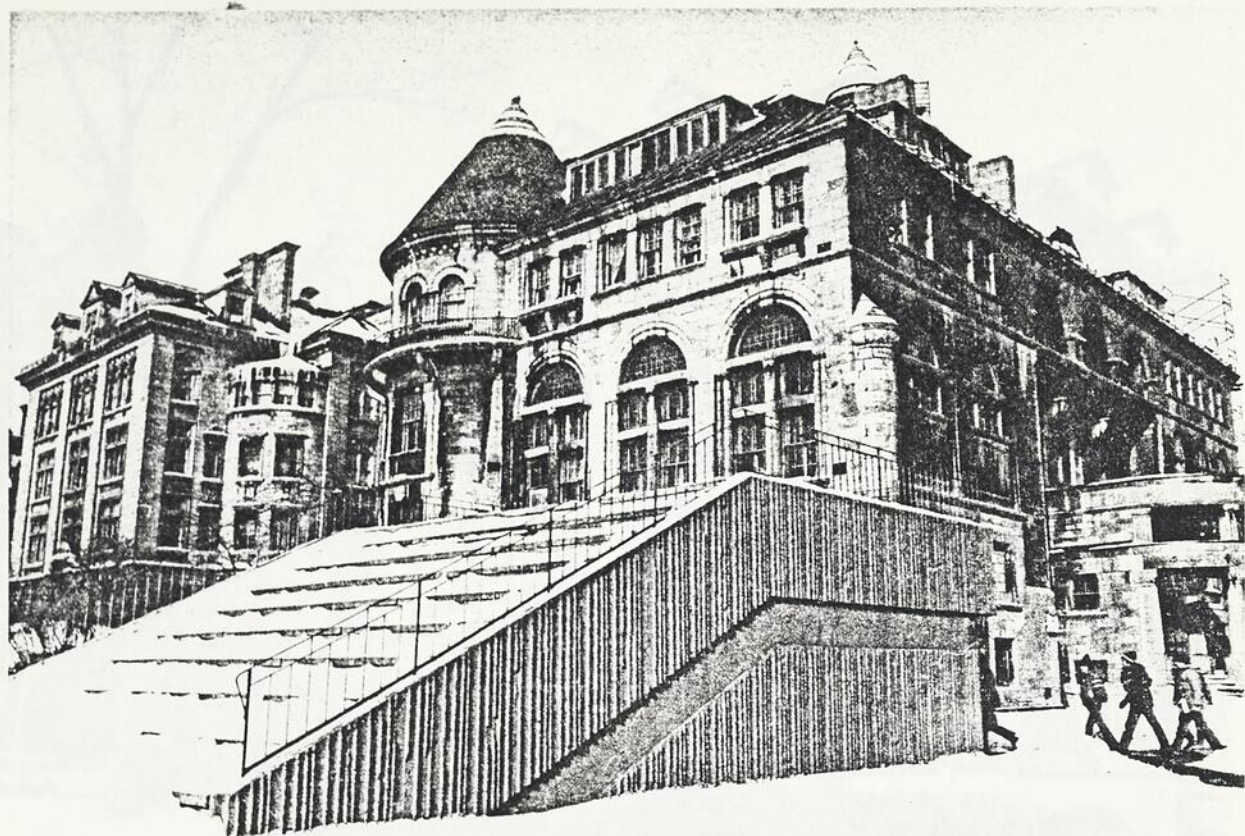


Fig. 200 McDonald Physics
Building, Campus Universi-
té Mc Gill.



Fig. 201 Redpath Library,
Campus Université Mc Gill.



Fig. 202 McDonald Chemistry Building, Campus Université Mc Gill.

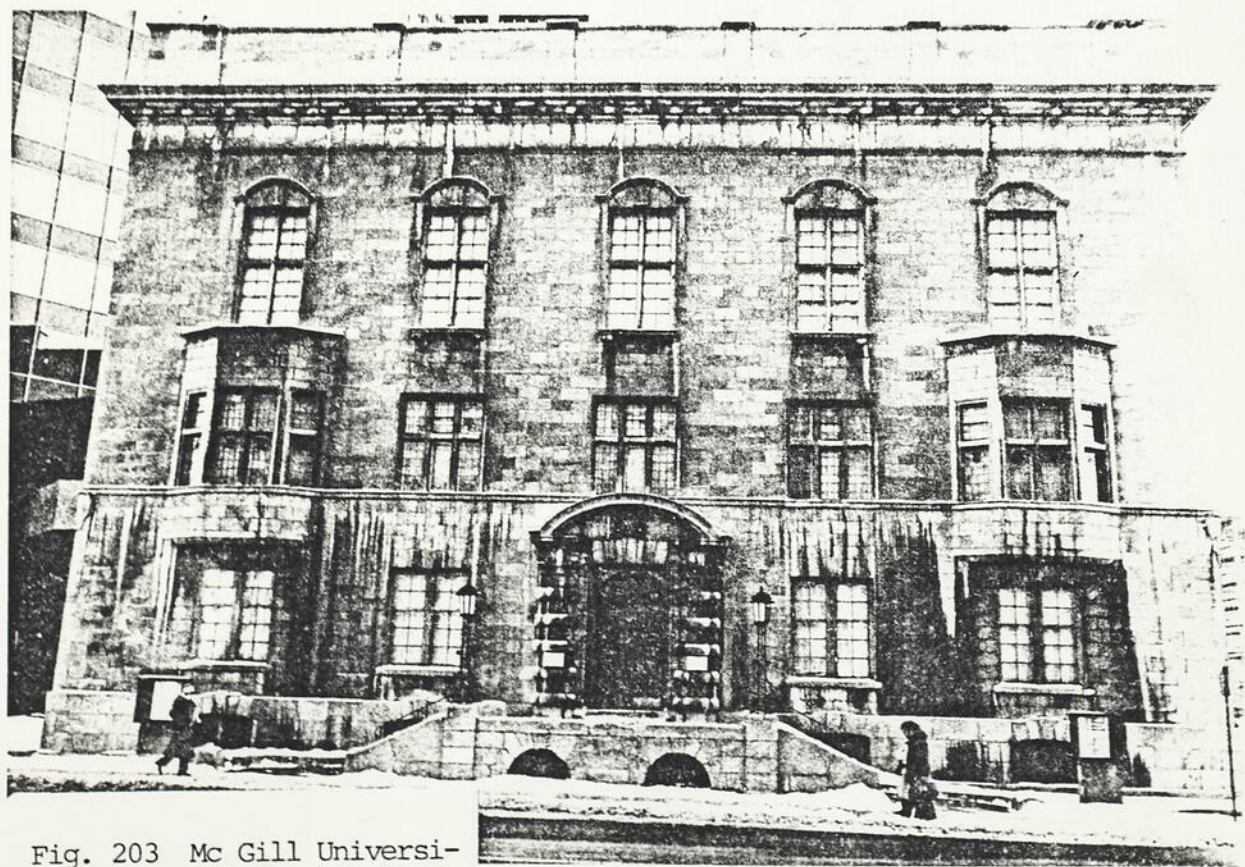


Fig. 203 McGill University Union, 690 Sherbrooke O.

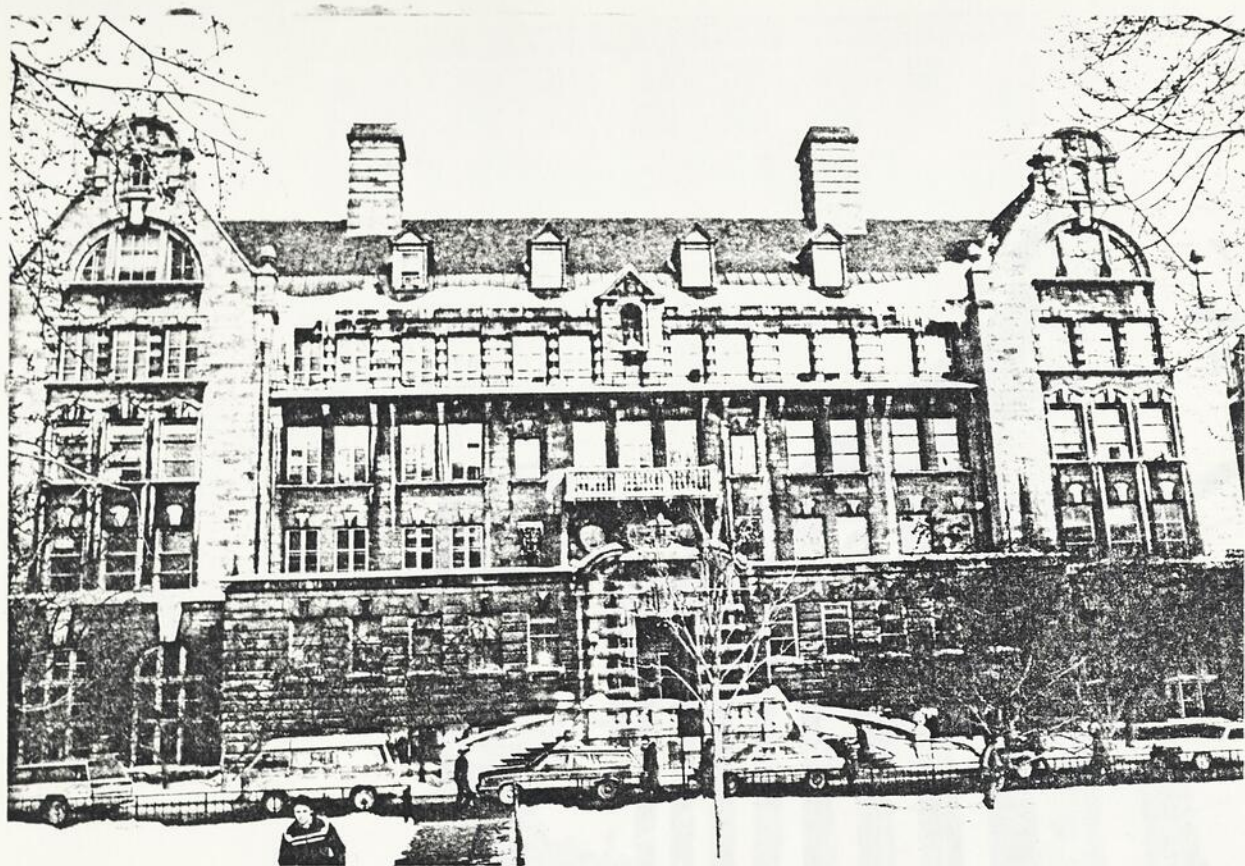


Fig. 204 McDonald Engineering Building, Campus Université Mc Gill.

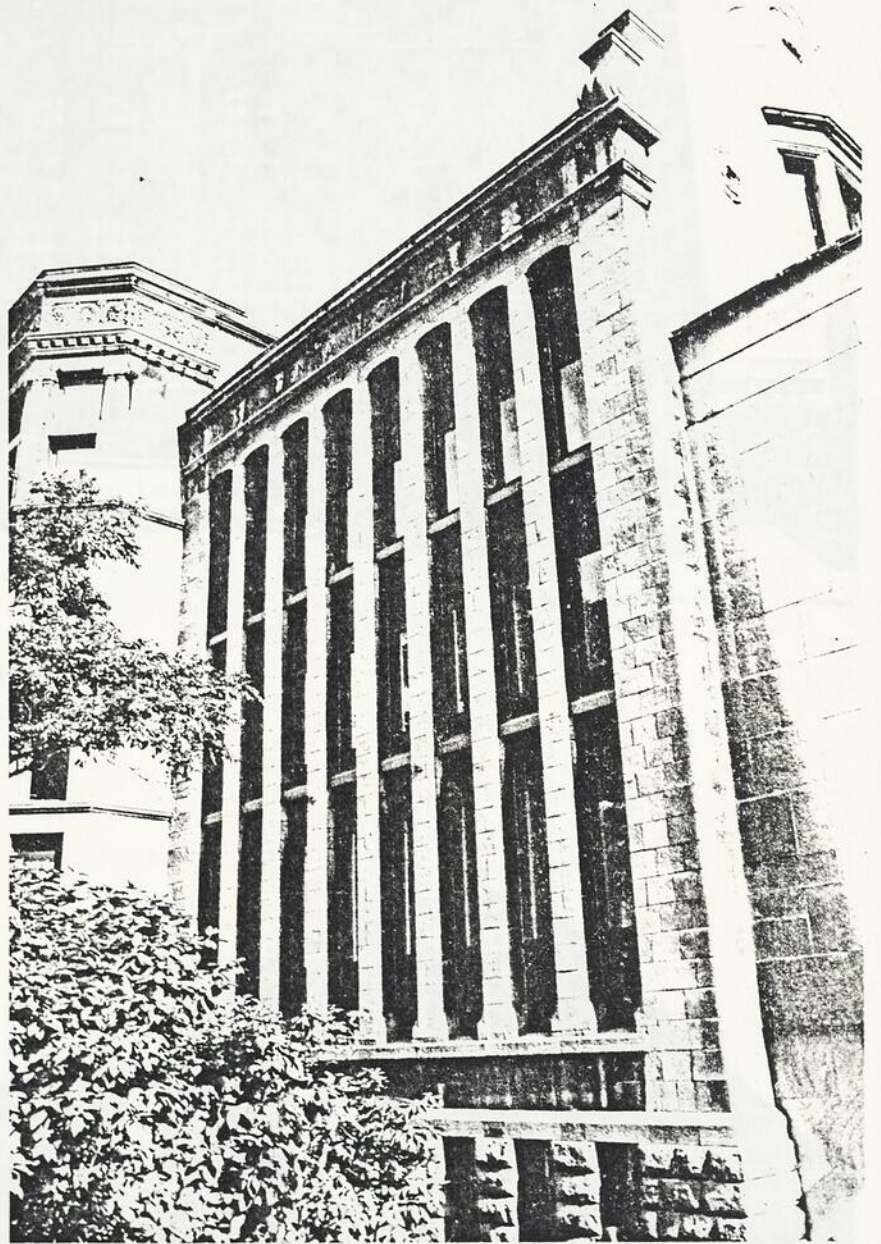


Fig. 205 Redpath Library,
3459 Mc Tavish.



Fig. 206 Biology Building,
Campus Université Mc Gill.



Fig. 207 Strathcona Medical
Building, Campus Université
Mc Gill.

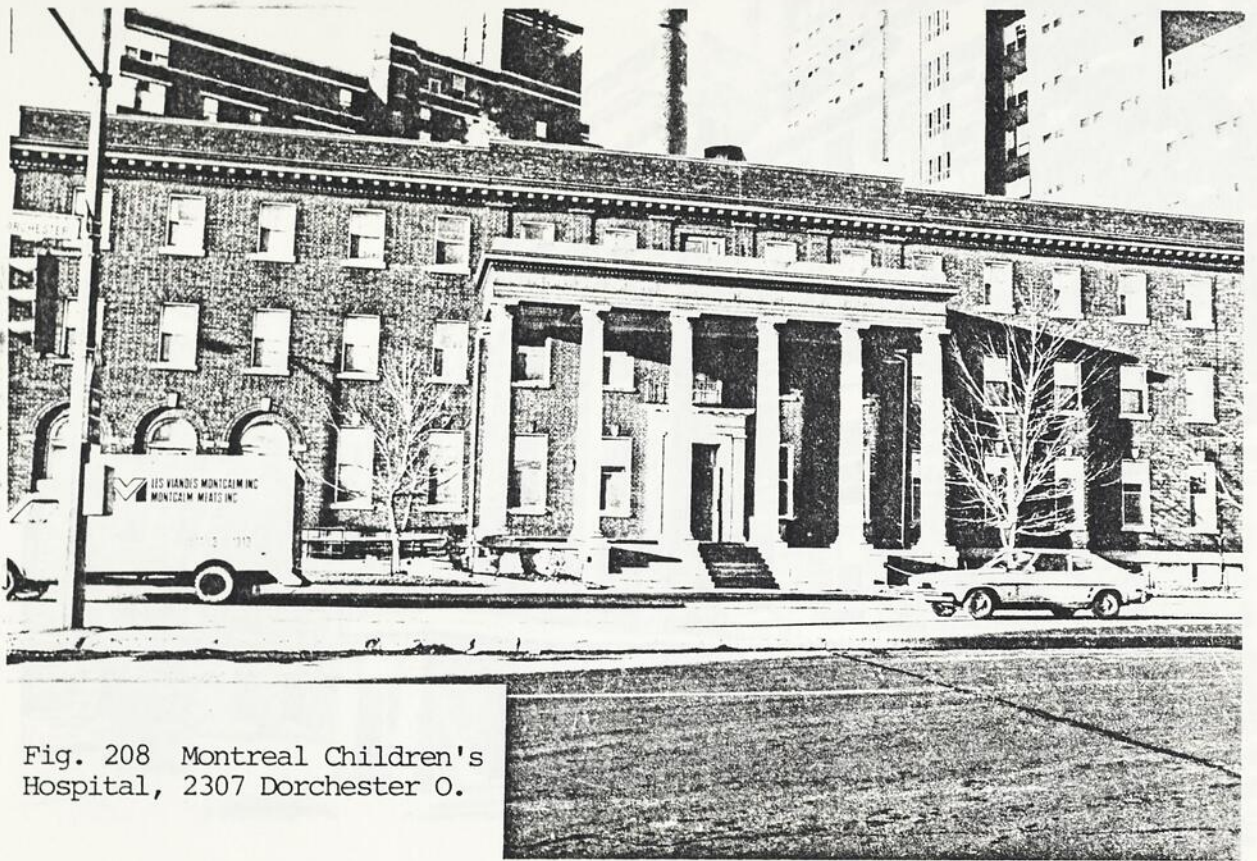


Fig. 208 Montreal Children's Hospital, 2307 Dorchester O.

In connection with the work of the Parks and Playgrounds Association, the McGill

University has since it was first quoted with more t

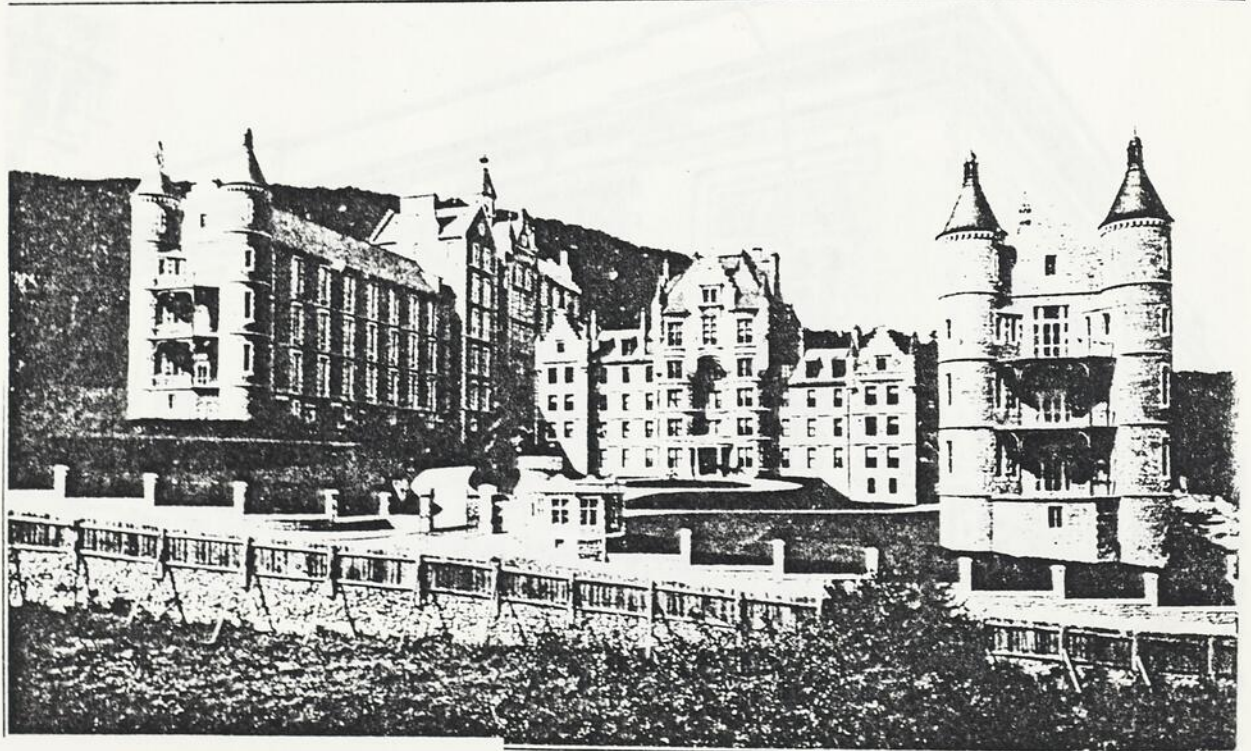


Fig. 209 Royal Victoria Hospital, 687 des Pins O., 1915.



Fig. 210 Ross Memorial Pavillon, Royal Victoria Hospital, 687 des Pins O.



Fig. 211 Musée des Beaux-Arts, 3410 avenue du Musée.

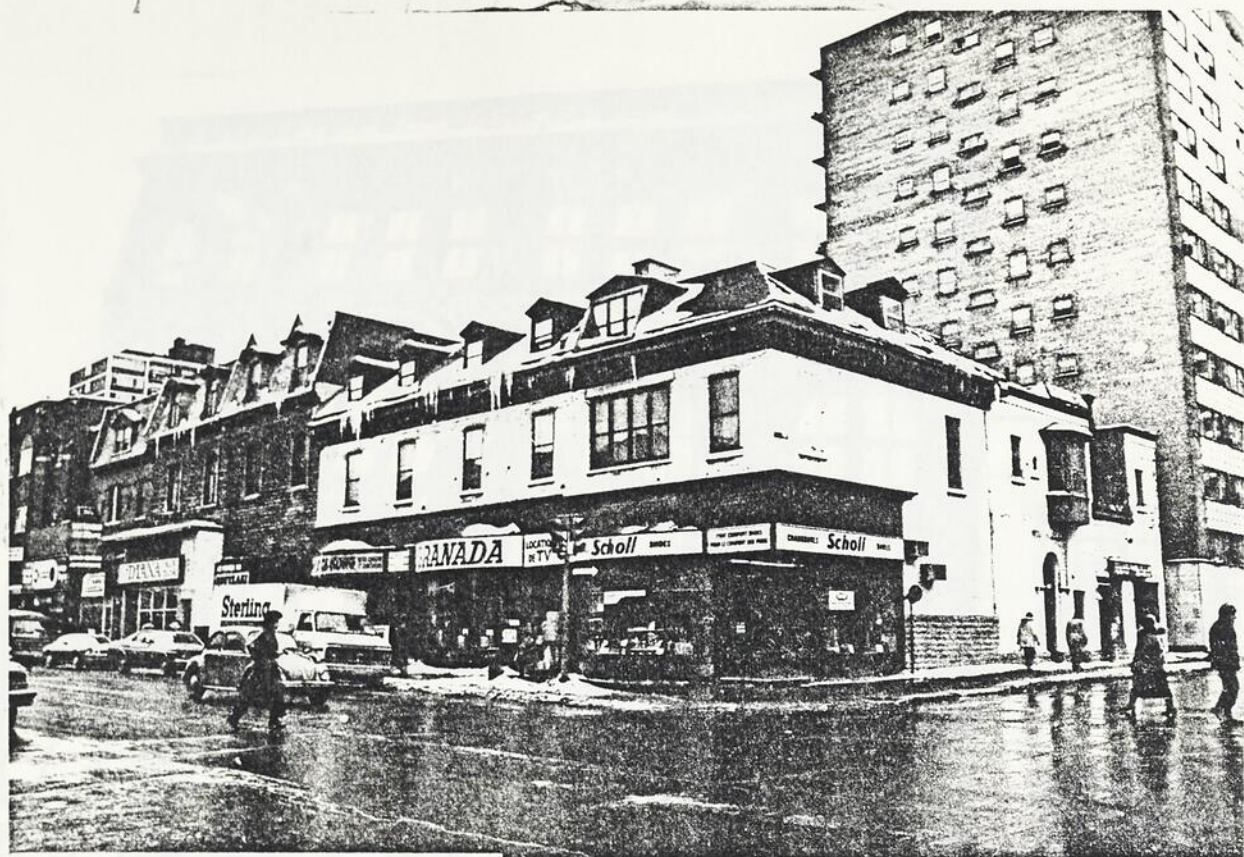


Fig. 212 Maison 1801 au 1821
Sainte-Catherine O.



Fig. 213 Commerces intégrés
à l'habitation, 1527-51
Notre-Dame O.

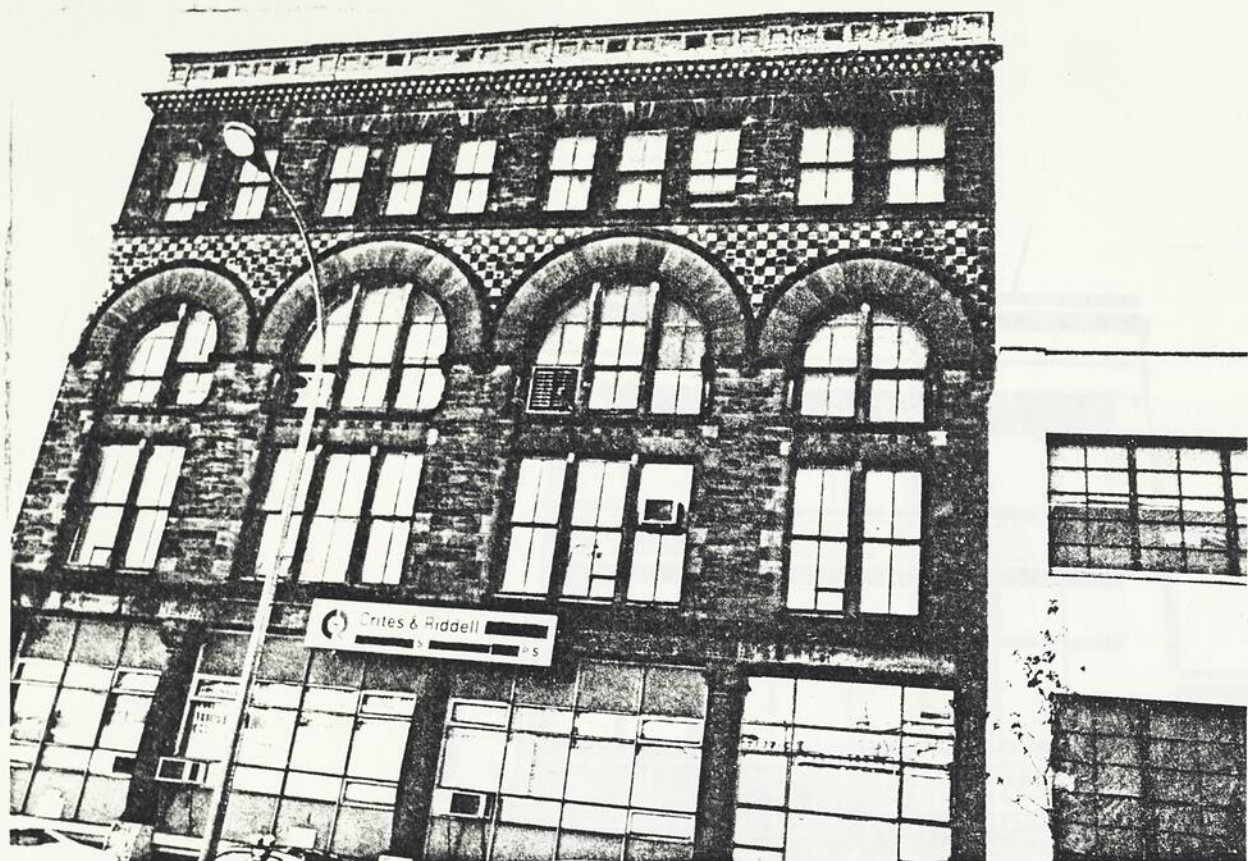


Fig. 214 Edifice 1050 de la
Montagne.



Fig. 215 Edifice 1183 Sain-
te-Catherine O.



Fig. 216 Edifice 682 Sainte-Catherine O., (bâtiment de gauche).



Fig. 217 Edifice 1420 Peel.



Fig. 218 Magasin La Baie
521 Sainte-Catherine O.,
1936.



Fig. 219 Magasin Birks
620 Sainte-Catherine O.

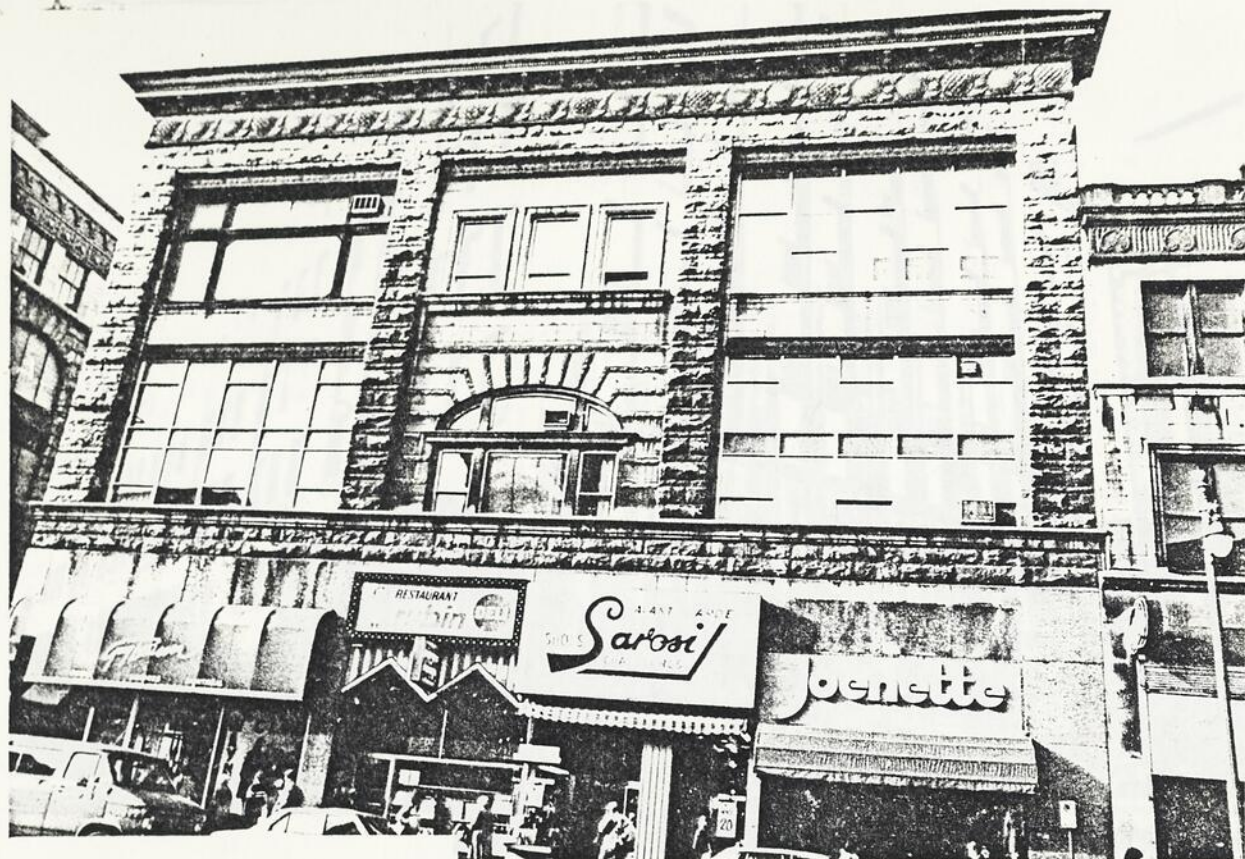


Fig. 220 Magasin Ogilvy -
premier édifice, 1253-63
Sainte-Catherine O.

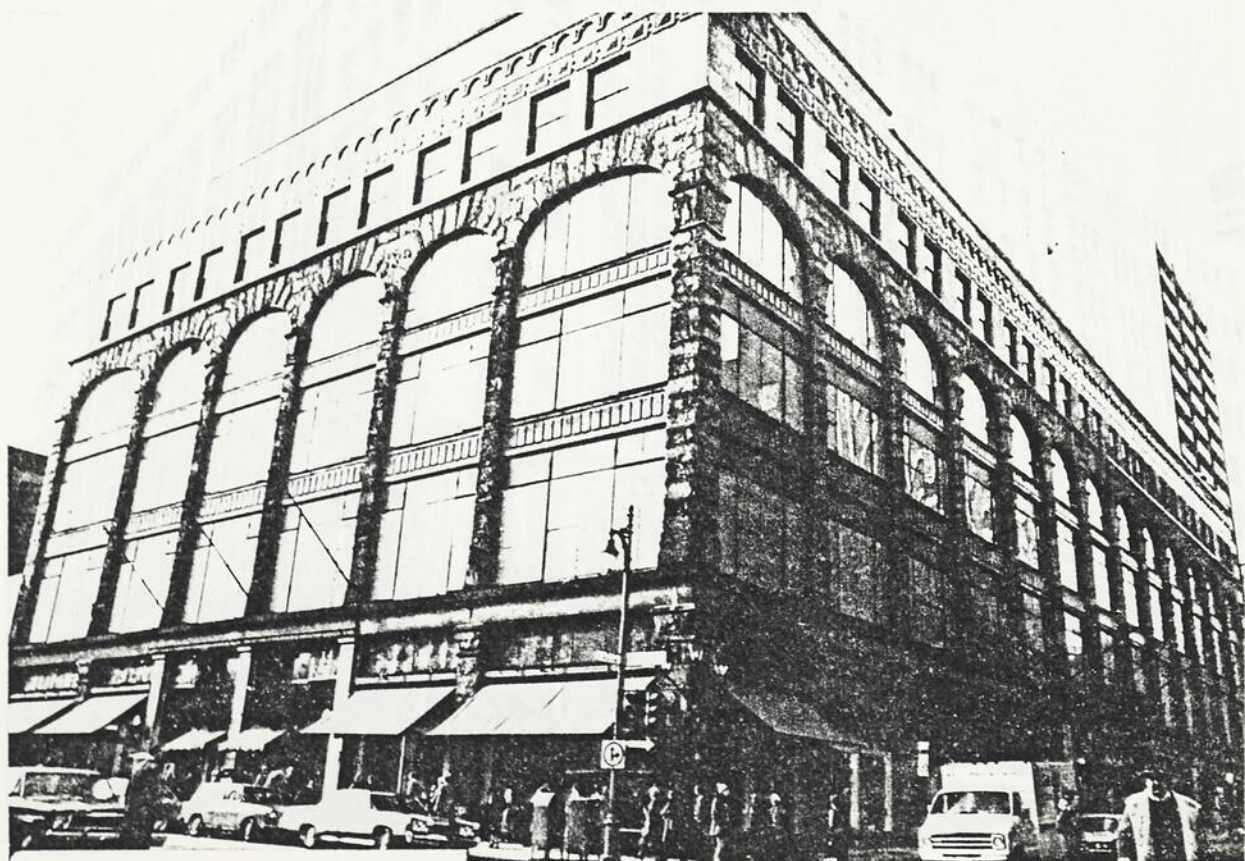


Fig. 221 Magasin Ogilvy -
second édifice, 1307 Sain-
te-Catherine O.



Fig. 222 Magasin Simpsons,
977 Sainte-Catherine O.



Fig. 223 Magasin Eaton,
677 Sainte-Catherine O.

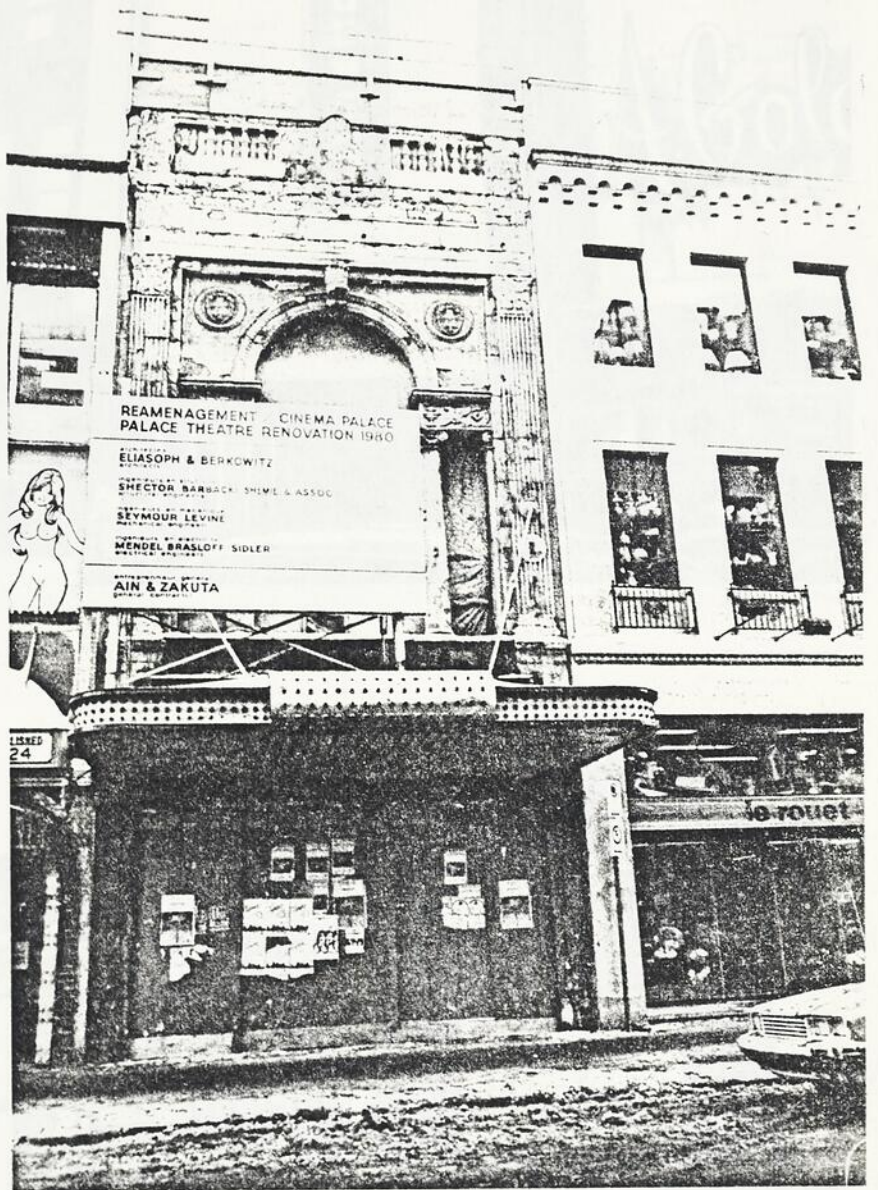


Fig. 224 Cinéma Palace,
698 Sainte-Catherine O.



Fig. 225 Cinéma Loews, 952
Sainte-Catherine O.



Fig. 226 Cinéma Seville,
2153-9 Sainte-Catherine O.



Fig. 227 Cinéma Imperial,
1424-32 Bleury.



Fig. 228 Strathcona Hall,
772 Sherbrooke O.

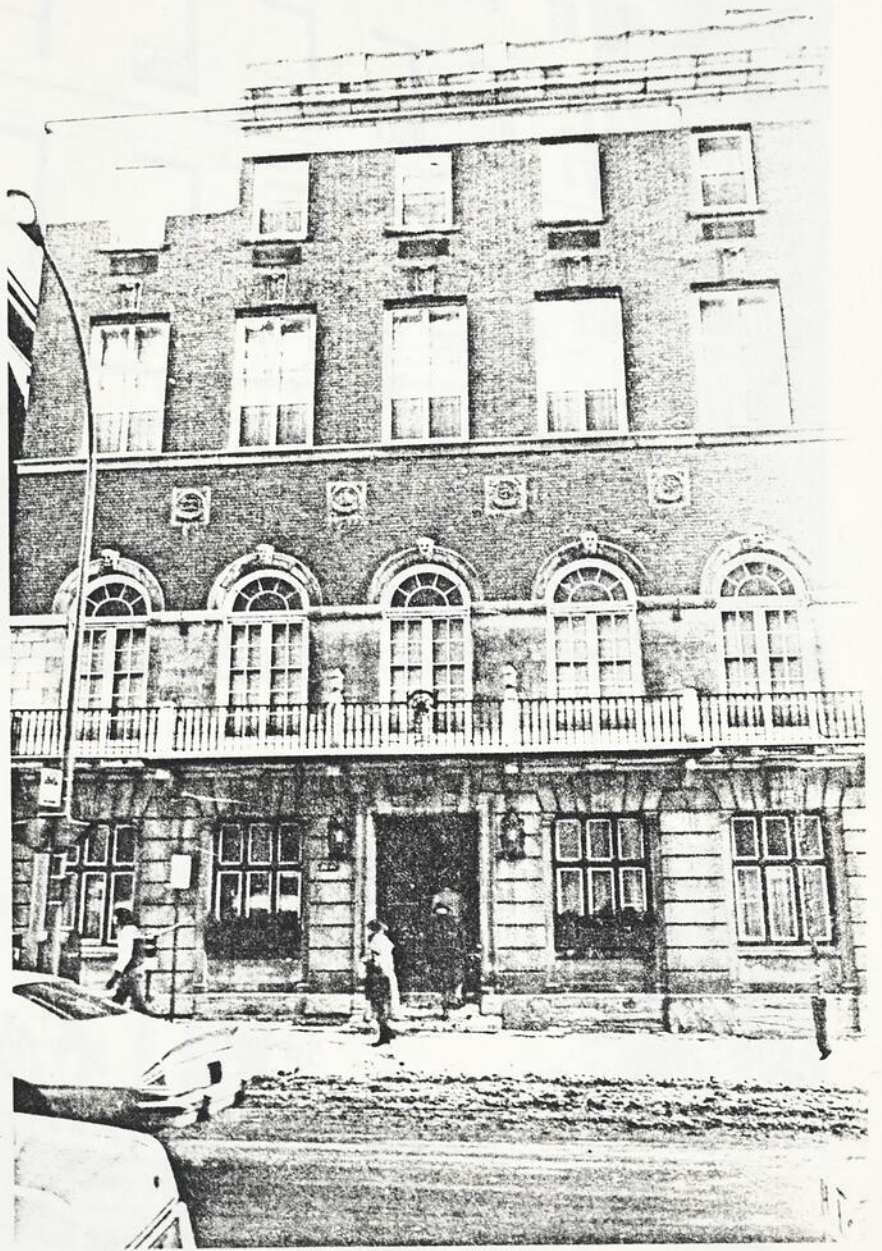


Fig. 229 University Club,
2047 Mansfield.



Fig. 230 Y.M.C.A., 1441
Drummond.

Fig. 231 Mount Royal Club,
1175 Sherbrooke O., 1915.

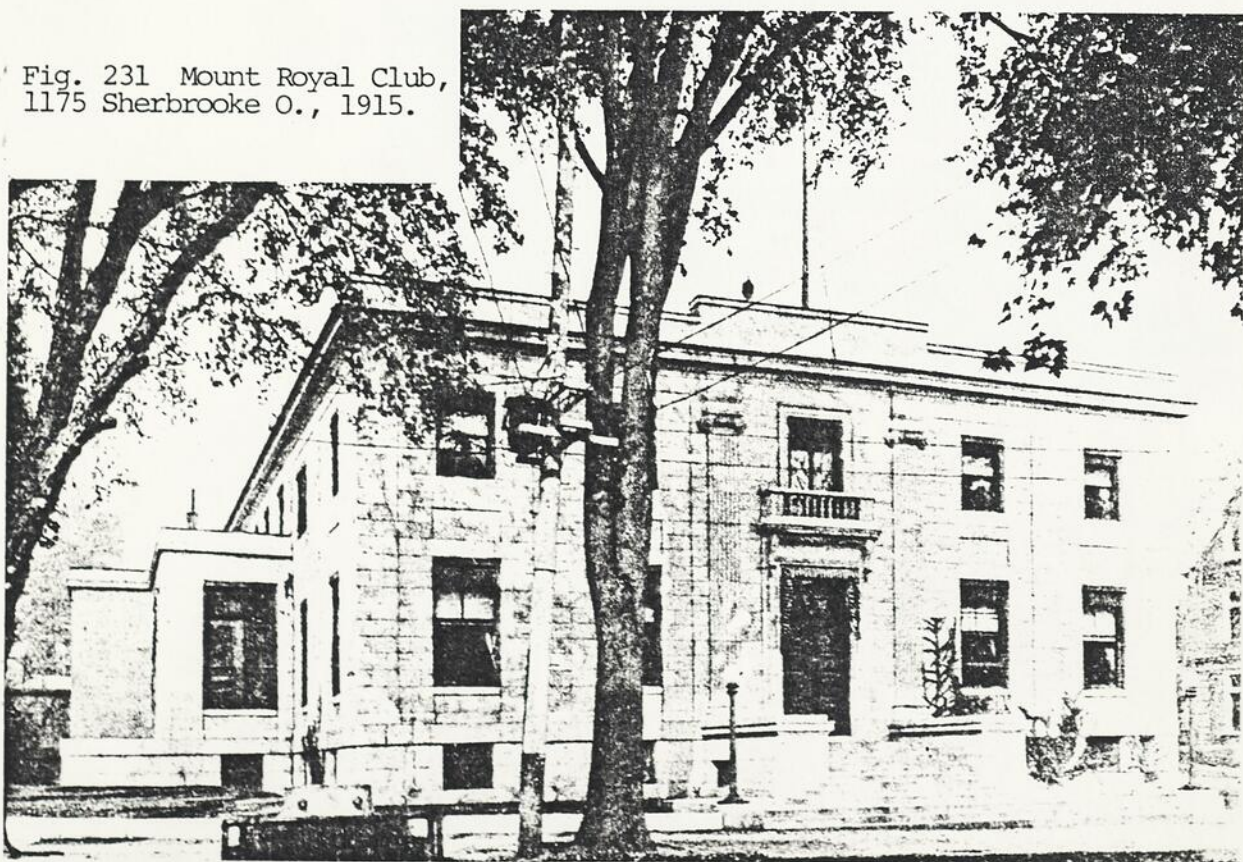




Fig. 232 Hôtel Windsor,
non daté.

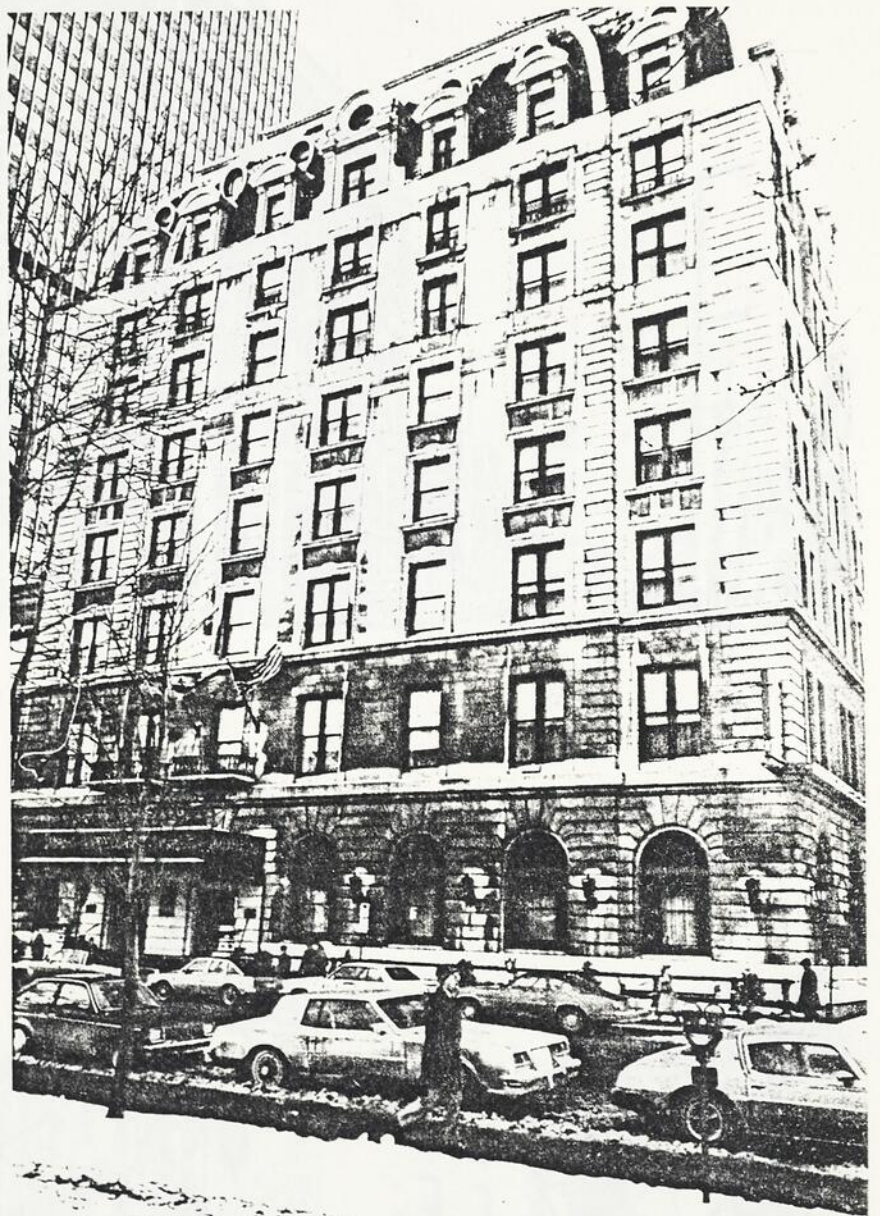


Fig. 233 Hôtel Windsor,
1170 Peel.



Fig. 234 Hôtel Queen's,
700 Peel, non daté.





Fig. 236 Hôtel Ritz Carlton
1228 Sherbrooke O.



Fig. 237 Hôtel Mont-Royal,
1455 Peel, 1930.



Fig. 238 Hôtel Berkeley,
1180 Sherbrooke O.



Fig. 239 Gare Windsor,
902-26 Peel.

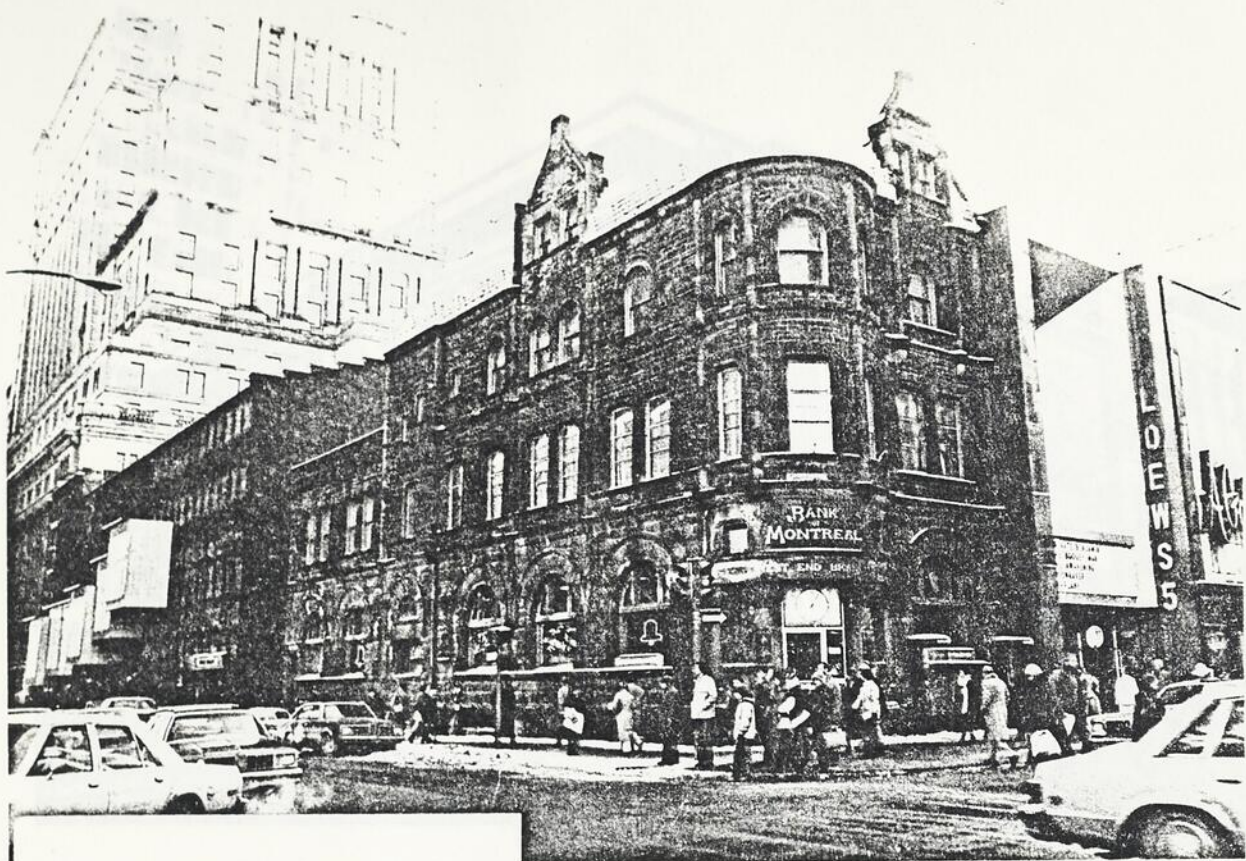


Fig. 241 Bank of Montreal
West-End Branch, 950 Sain-
te-Catherine O.



Fig. 242 Merchant's Bank of
Canada, 1205 Sainte-Catherine
O.



Fig. 243 Banque d'Epargne,
777 Sainte-Catherine O.



Fig. 244 Banque de Montréal,
1601 Sherbrooke O.

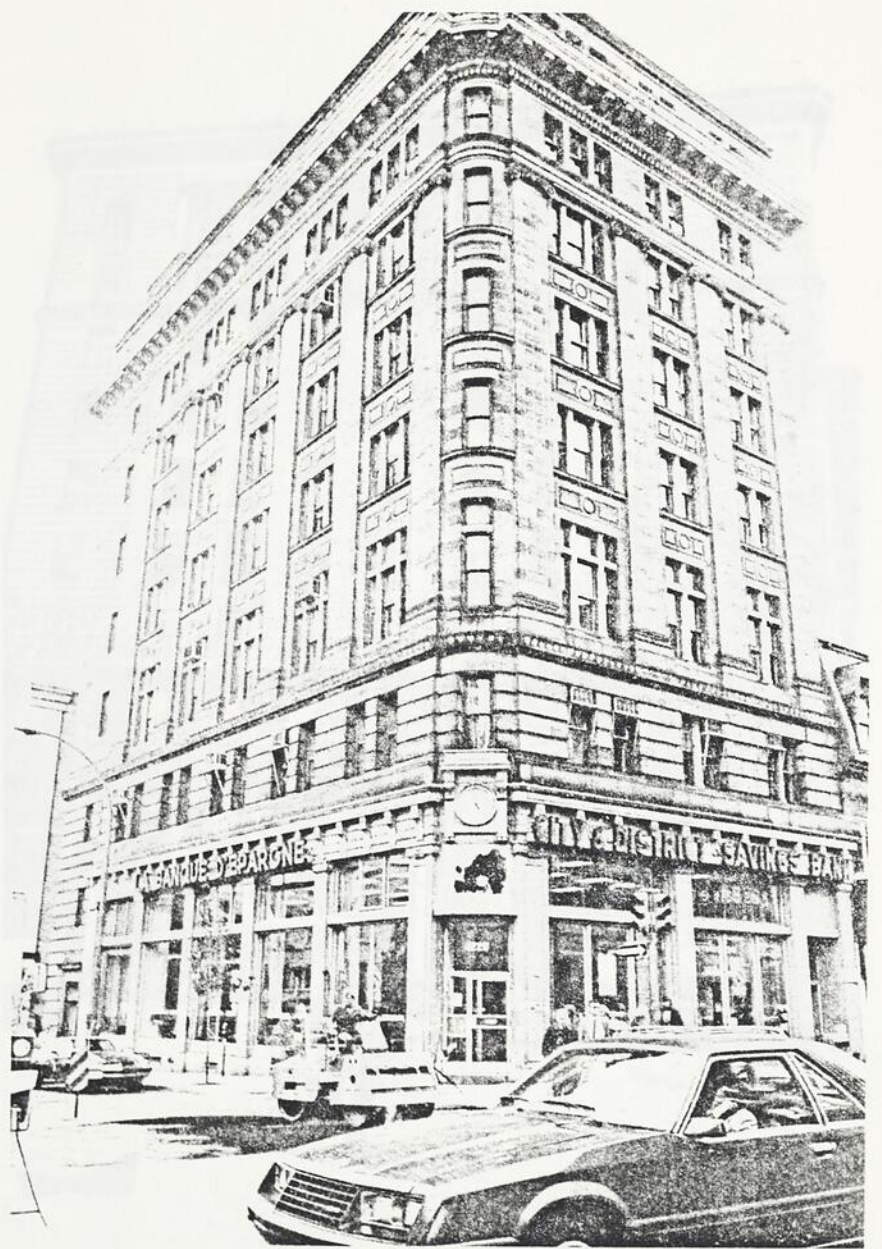


Fig. 245 Immeuble Willis,
1220 Sainte-Catherine O.



Fig. 246 Canada Cement Co.
Building, 606 Cathcart.

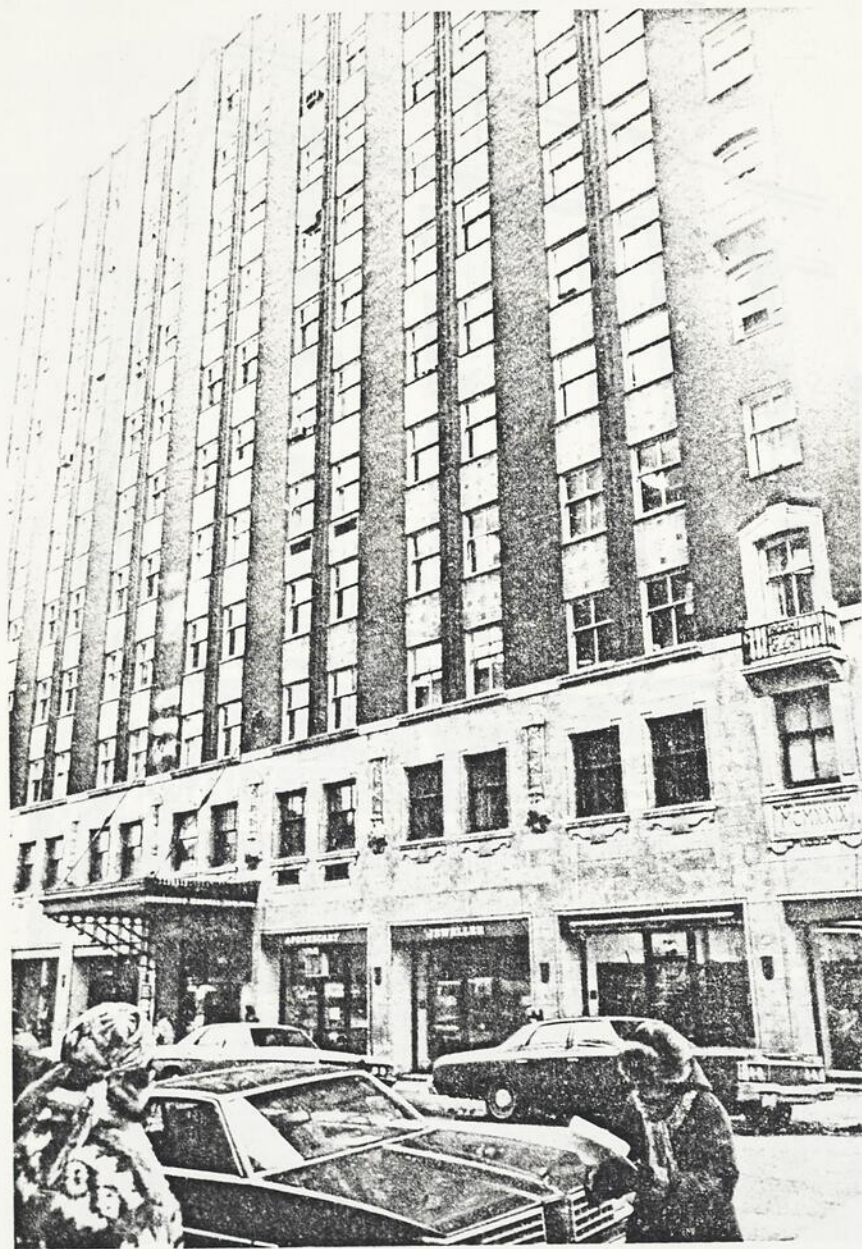


Fig. 247 Drummond Medical
Building, 1414 Drummond.



Fig. 248 Edifice Crescent,
1327-33 Sainte-Catherine O.



Fig. 249 Edifice Sun Life,
non daté.



Fig. 250 Edifice Sun Life,
1155 Metcalfe,
1935.

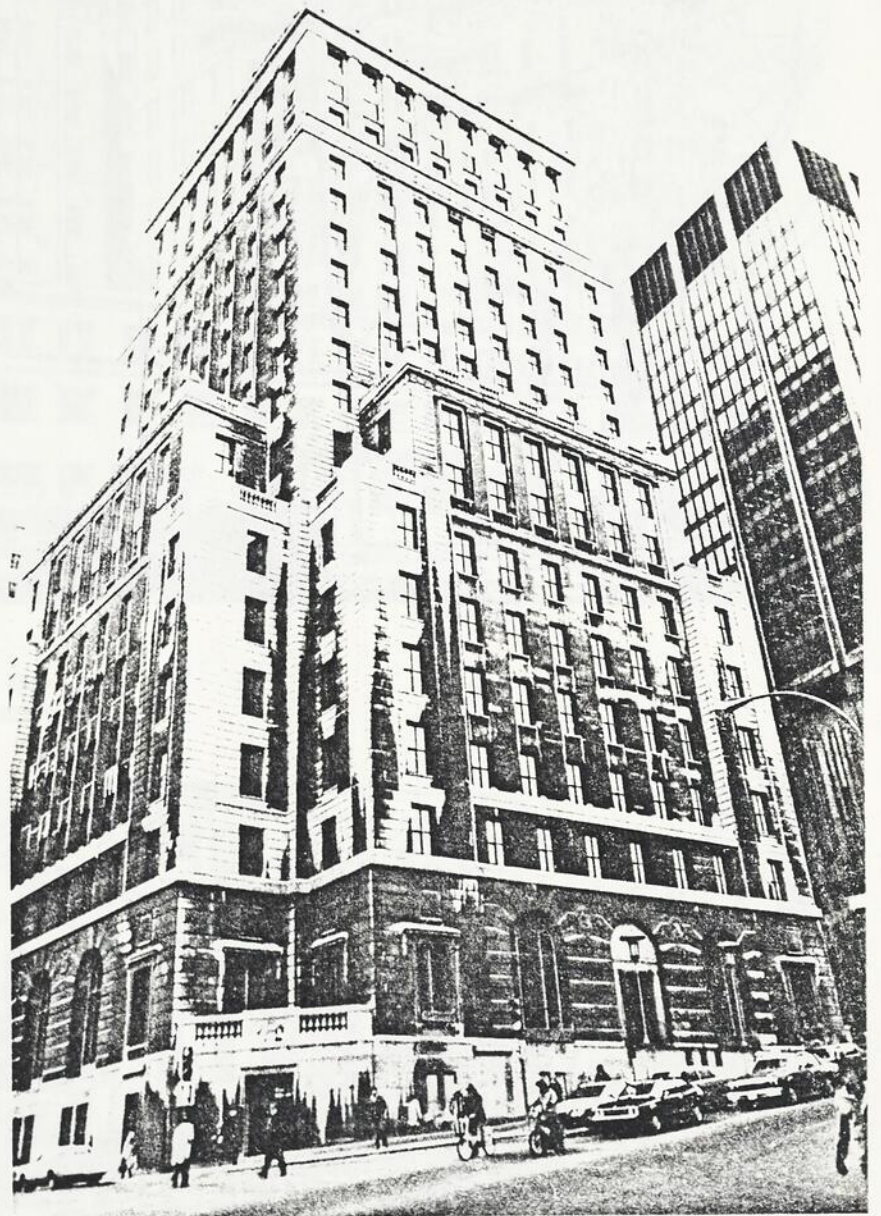


Fig. 251 Edifice Bell Canada,
635 de La Gauchetière O.



Fig. 252 Edifice Square Dominion, 1010 Sainte-Catherine O., 1936.



Fig. 253 Edifice Seagram, 1430 Peel.



Fig. 254 Edifice 1000-06
de la Montagne.



Fig. 255 Medico-Dental Building,
1396 Sainte-Catherine O.



Fig. 256 Edifice 1100-08
Sainte-Catherine O.



Fig. 257 Herman Building,
500-10 Mc Gill.



Fig. 258 Mercury Building,
651 Notre-Dame O.



Fig. 259 Usine 977 Lucien
l'Allier.



Fig. 260 Usine 750 Guy.



Fig. 261 Edifice Belgo, 352-
84 Sainte-Catherine O.



Fig. 262 Edifice Unity, 454
de La Gauchetière O.



Fig. 263 Edifice Southam,
1070 Bleury.



Fig. 264 Edifice Canada,
455 Saint-Antoine O.

Fig. 265 Edifice Canada,
1211-13 Saint-Catherine O.



Fig. 265 King's Hall,
1221-43 Sainte-Catherine O.



Fig. 266 Edifice Coronation,
1391-7 Sainte-Catherine O.



Fig. 267 Edifice 482-8 Sainte-Catherine O.



Fig. 268 Poste de pompier, 1958-60 Dorchester O.

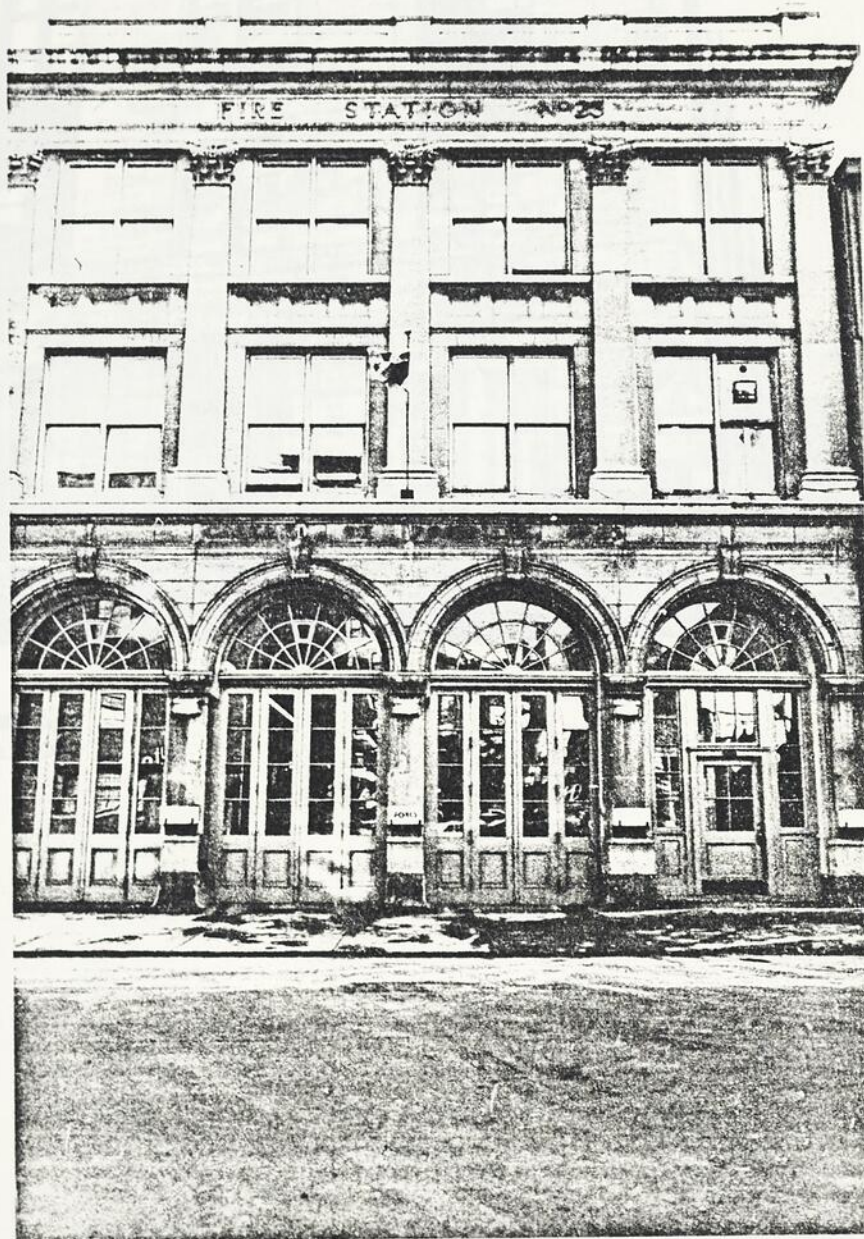


Fig. 269 Poste de pompier,
1212 Drummond.



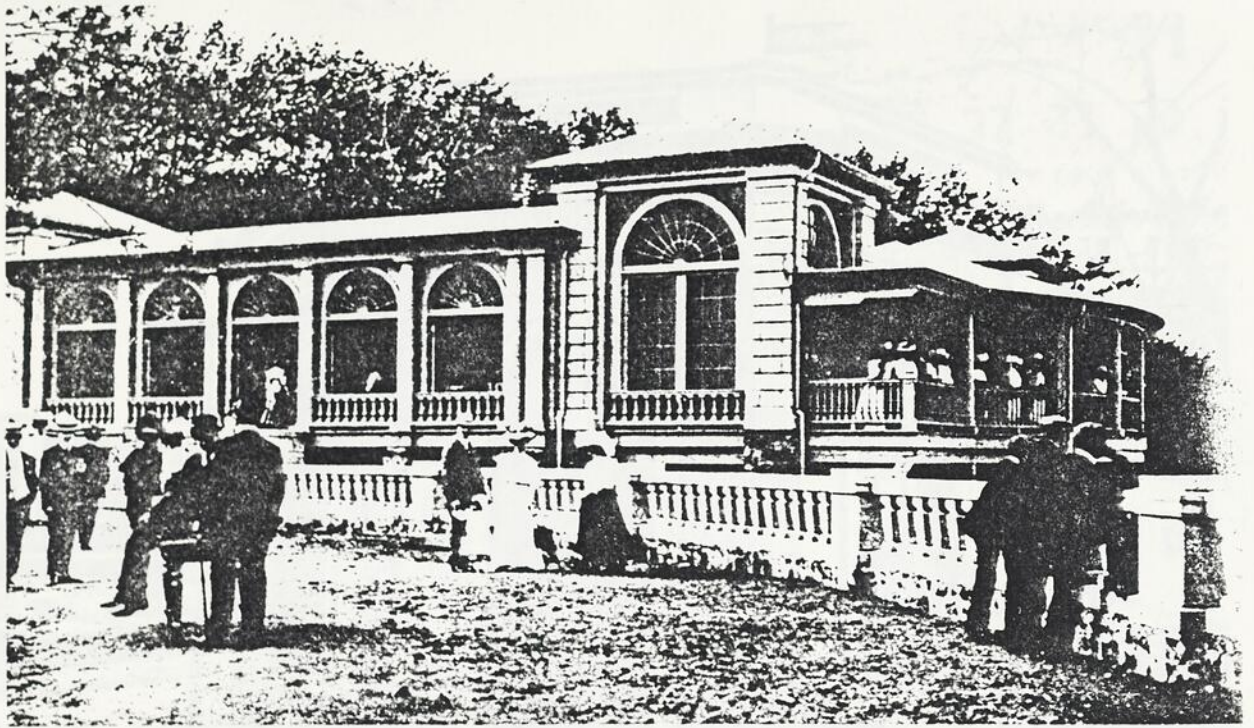
Fig. 270 Poste de pompier
et police, 1684 de Maison-
neuve O.



Fig. 272 Bain public,
757 des Seigneurs.



Fig. 273 Aqueduc et station
de pompage Mc Grégor, 815-55
Mc Grégor.



THE LOOKOUT, MOUNT ROYAL, 1906

This elegant wooden structure was erected in 1906 by the archi-

Fig. 274 Chalet de la Montagne, 1906.

Fig. 275 Chalet de la Montagne.





Fig. 276 Vespasienne -
Square Dominion.

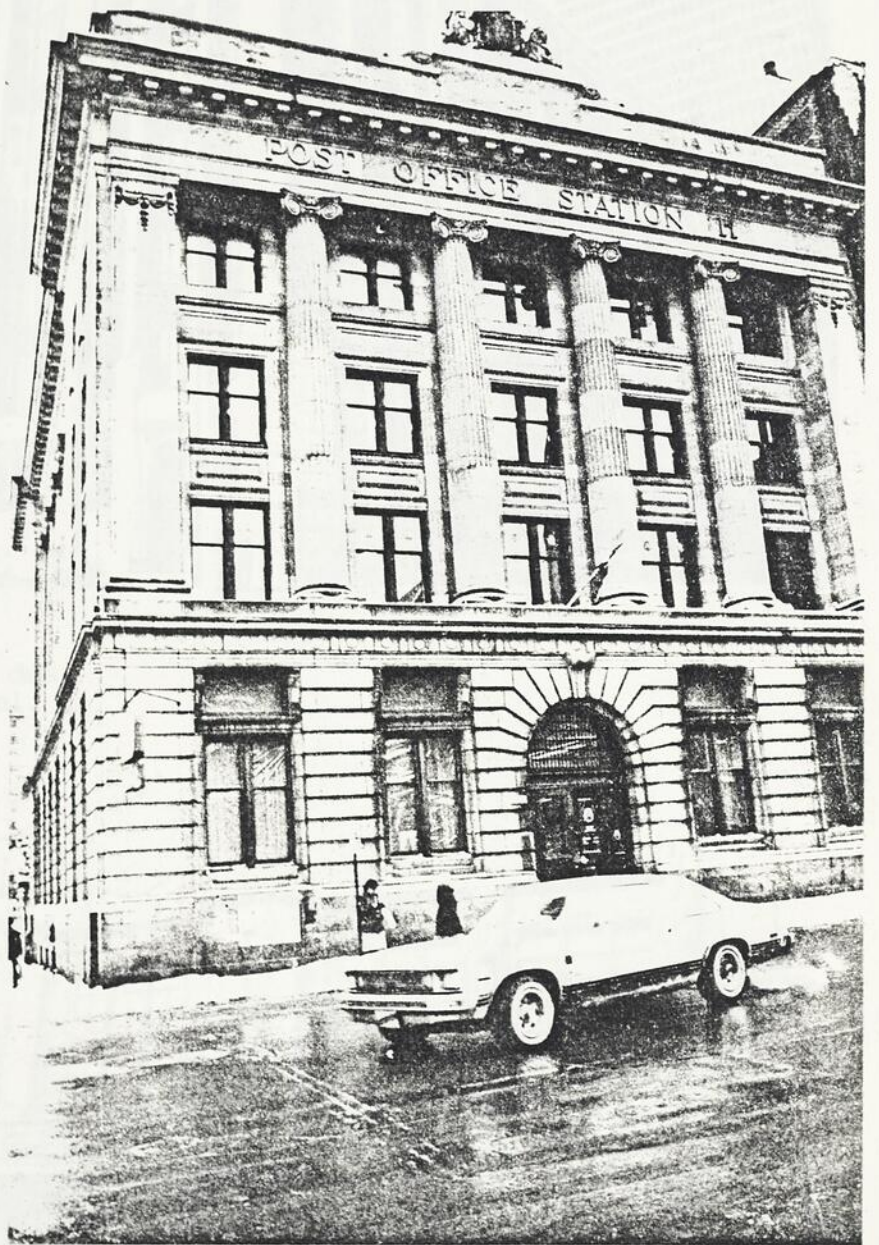
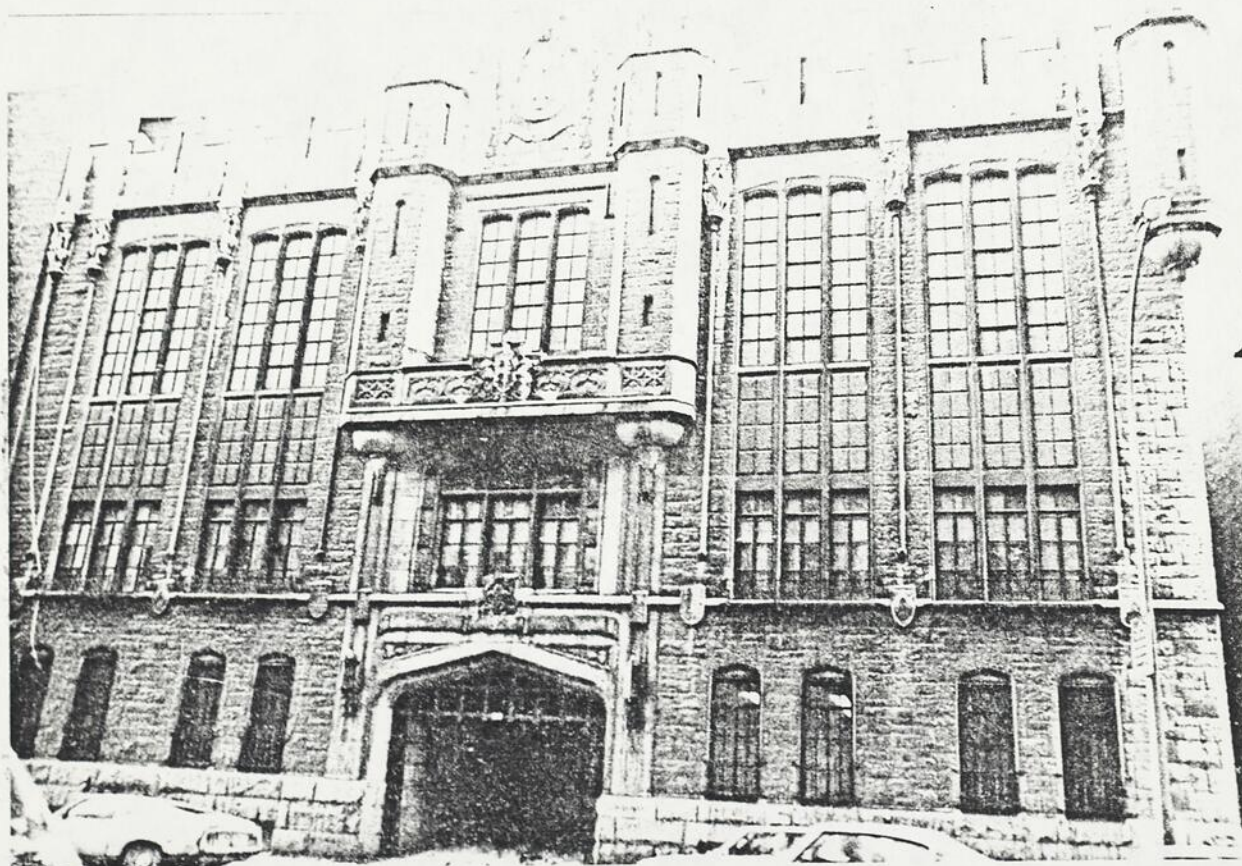


Fig. 277 Bureau de poste H,
1420 Sainte-Catherine O.



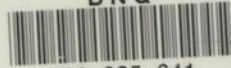
Fig. 278 Bureau central des postes, 715 Peel.



y. 279 Victoria Rifles of Canada, 691 Cathcart.



BNQ



000 285 641