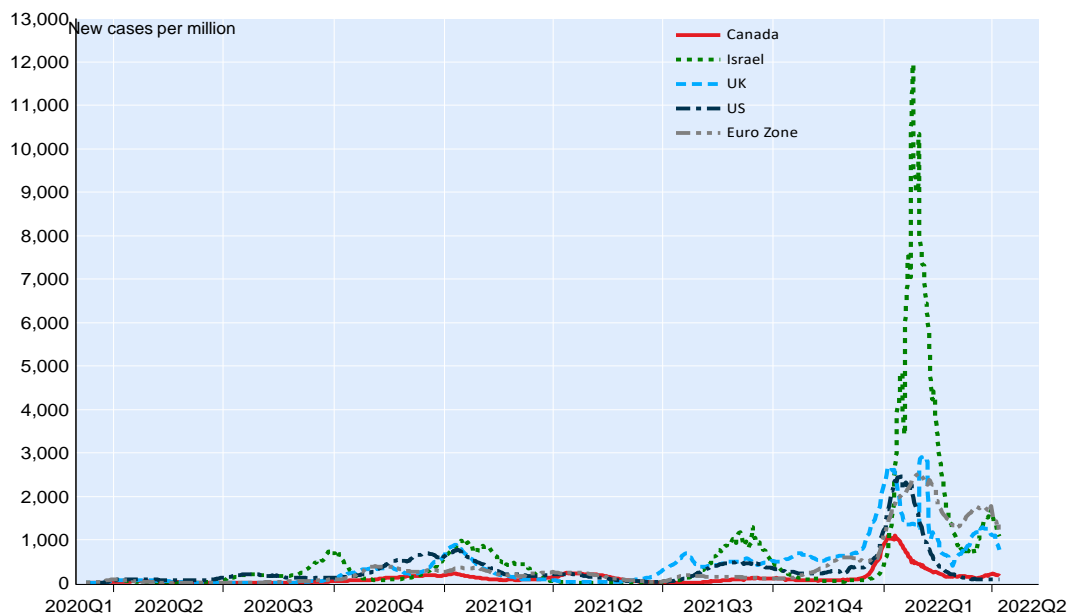


April 8, 2022

This monitor provides weekly updates on the evolution of COVID-19 in selected countries using data available as of 8:00am EDT (graphs 1-9). We also track the progression of vaccines around the world (graphs 10-17), monitor the stringency of policy related to containment restrictions and public information campaigns (graph 18), monitor the reopening of economies (graph 19-20), and offer an update of our financial conditions index for Canada (graph 21).

1. World: Evolution of the pandemic

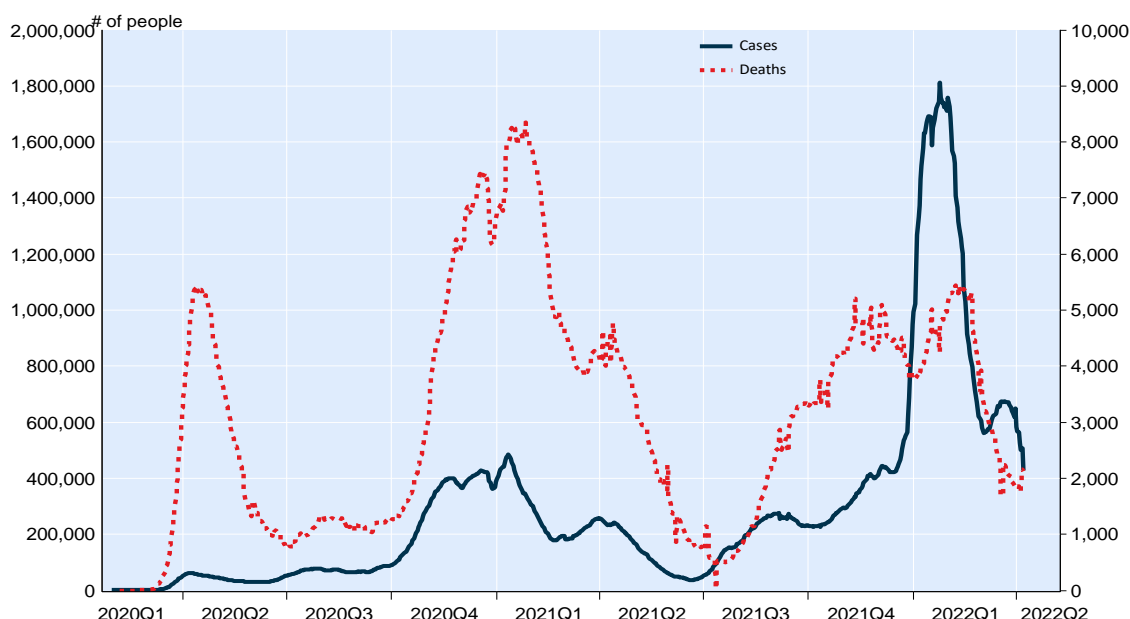
Daily new cases per million population by region, 7-day mov. average



NBF Economics and Strategy (data via Johns Hopkins CSSE)

2. Developed countries: Perspective on COVID-19 cases and deaths

New cases and new deaths in Europe and North America, 7-day mov. average

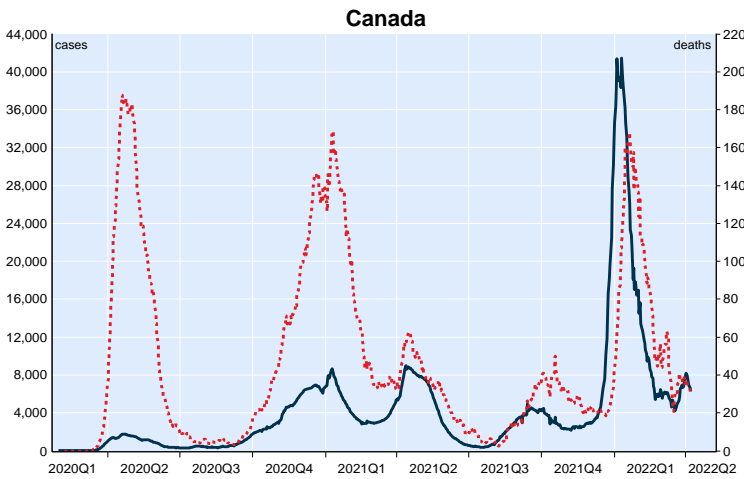


NBF Economics and Strategy (data via Johns Hopkins CSSE)

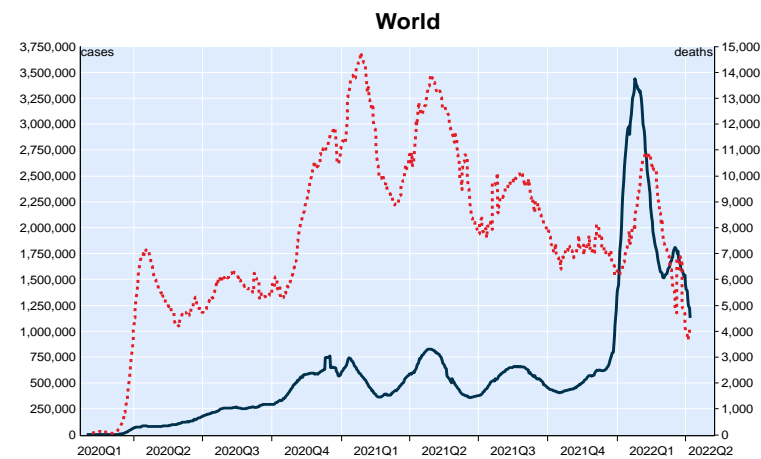
3. Evolution of the COVID-19 pandemic, selected countries

Daily change in cases and in deaths, 7 day moving average (data via Johns Hopkins CSSE)

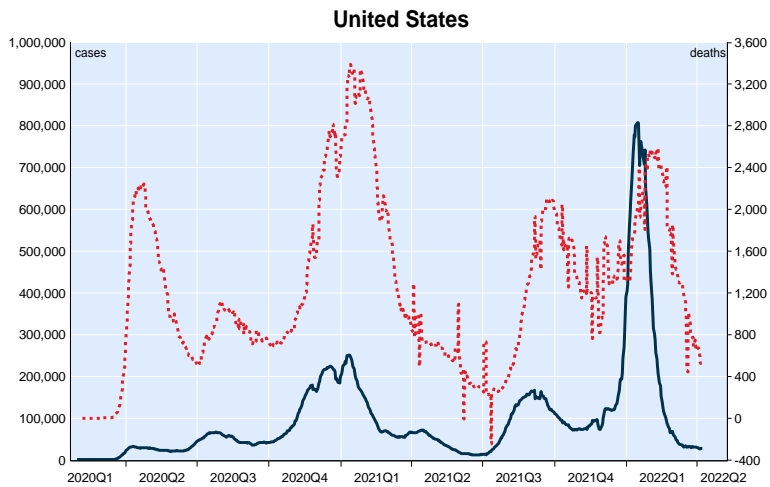
■ New cases (left axis) ■ New deaths (right axis)



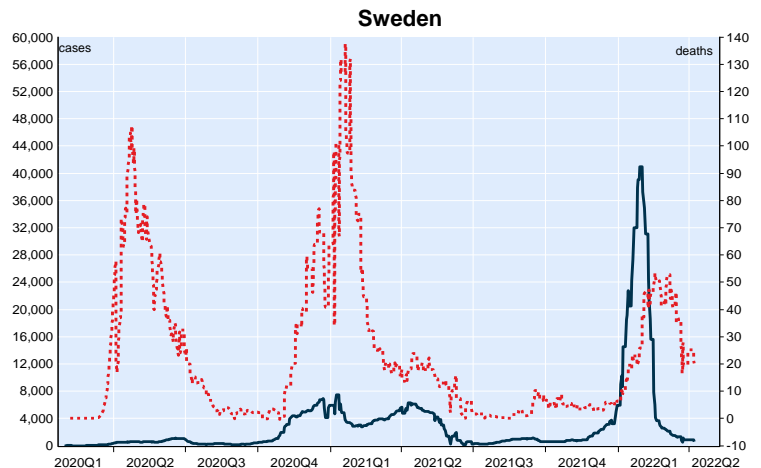
NBF Economics and Strategy



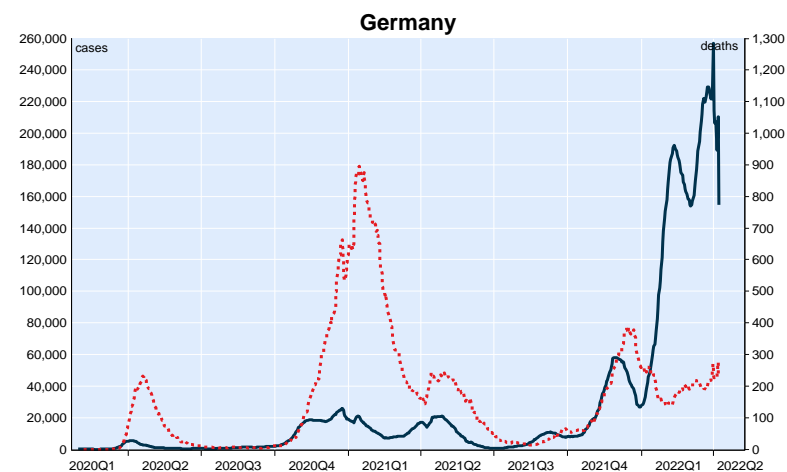
NBF Economics and Strategy (data via Johns Hopkins CSSE)



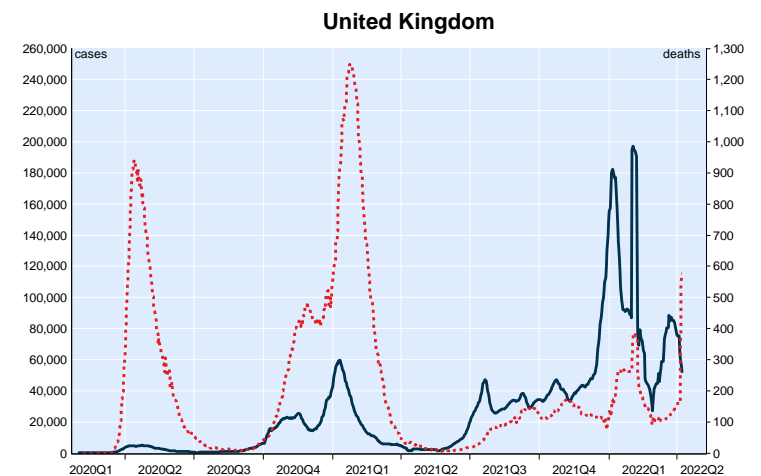
NBF Economics and Strategy



3F Economics and Strategy



NBF Economics and Strategy

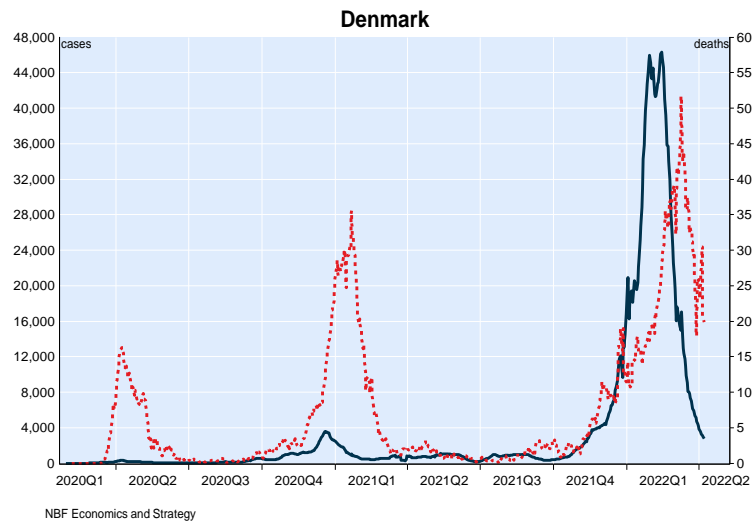
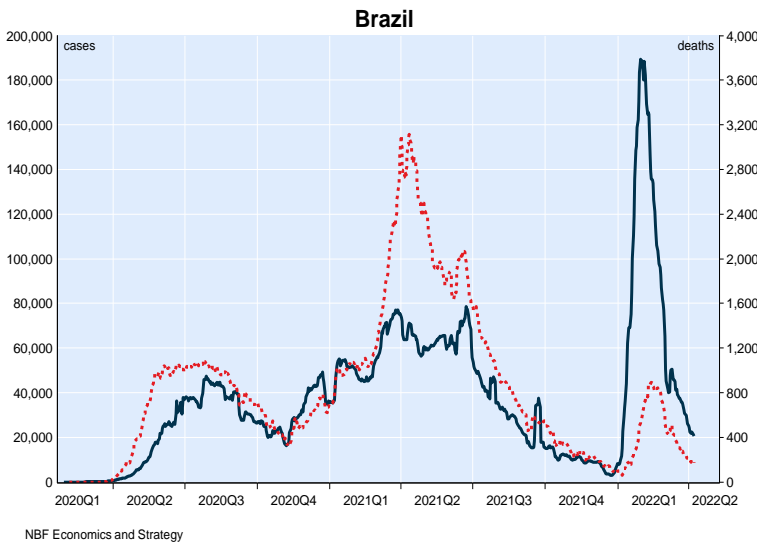
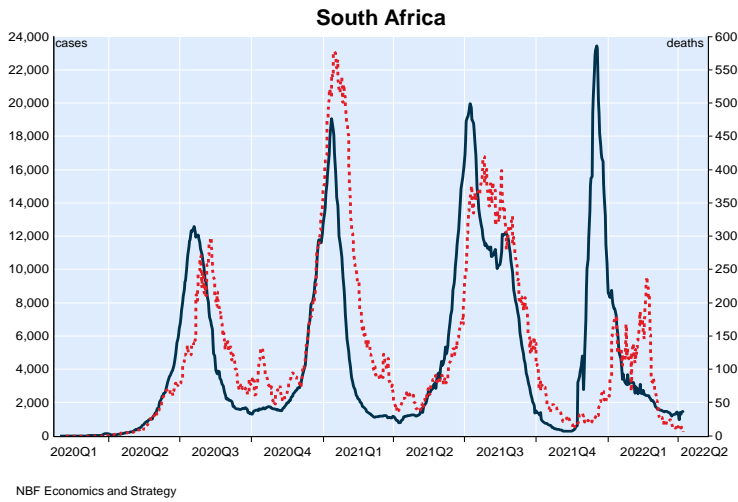
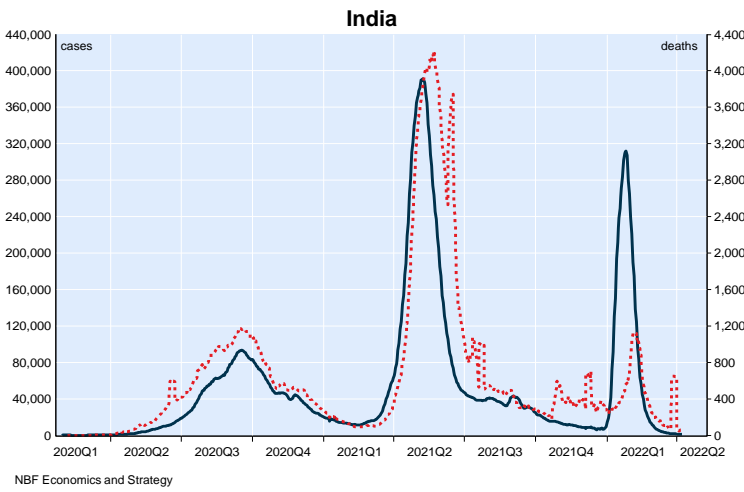
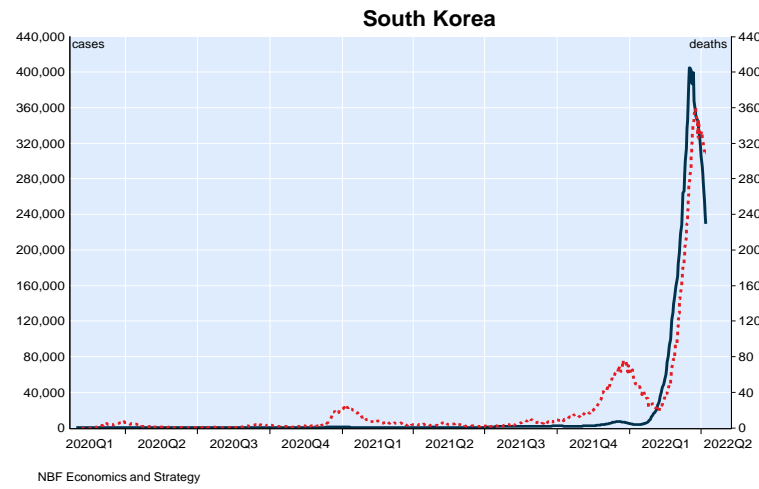
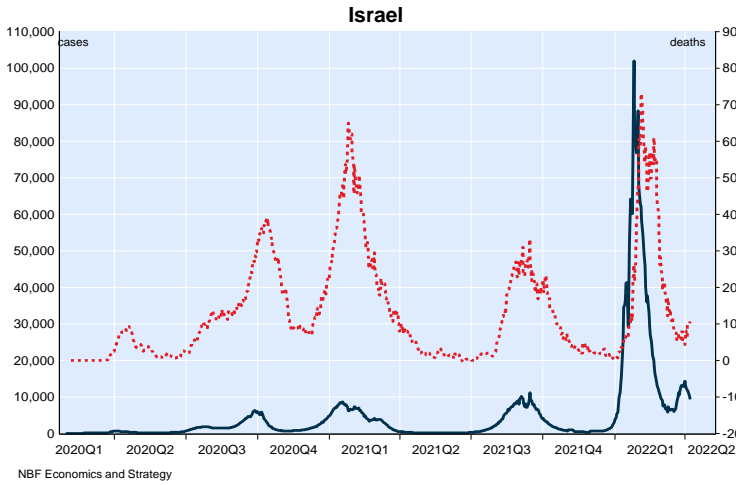


*Volatility in cumulative number of cases due to new episode based reporting which includes reinfections.
NBF Economics and Strategy

3. Evolution of the COVID-19 pandemic, selected countries (continued)

Daily change in cases and in deaths (data via Johns Hopkins CSSE)

■ New cases (left axis) ■ New deaths (right axis)



4. World, cases per million population, selected countries

	Total cases per million population since start of the pandemic	Average new daily cases per million population										Last 7 days	7 days vs 28 days trend
		Q2 2020	Q3 2020	Q4 2020	Q1 2021	Q2 2021	Q3 2021	Q4 2021	Q1 2022	Last 28 days			
South Korea	292 507	1	2	8	9	12	33	68	147	6387	4484	↓	
Australia	197 250	1	8	1	0	1	33	137	1820	2045	2257	↑	
France	396 713	24	64	340	340	185	190	487	2586	1738	2011	↑	
Austria	441 112	9	33	384	230	128	112	650	3170	3701	1900	↓	
Germany	269 151	16	13	189	146	117	66	384	1840	2555	1854	↓	
Italy	249 481	24	13	322	271	123	74	261	1567	1116	1094	↓	
Israel	467 487	25	283	224	535	11	562	130	3324	1167	1078	↓	
Finland	166 430	12	5	51	83	36	90	253	1225	1340	956	↓	
Netherlands	470 556	24	45	430	309	265	202	718	3135	2035	850	↓	
Portugal	356 800	37	36	359	443	62	202	341	2356	937	836	↓	
Belgium	339 348	46	54	497	227	193	151	810	1657	885	801	↓	
United Kingdom	316 833	40	27	326	304	74	481	822	1346	1079	760	↓	
Vietnam	104 401	0	0	0	0	2	87	106	902	1781	749	↓	
Switzerland	410 743	19	27	505	192	130	174	623	2815	2029	519	↓	
Hong Kong	159 123	16	13	189	146	117	66	384	1720	1832	496	↓	
Denmark	533 315	19	29	255	129	120	123	835	201	961	483	↓	
Japan	54 279	1	6	13	21	28	78	2	423	359	372	↑	
Chile	184 712	160	105	84	227	325	56	87	983	473	224	↓	
Norway	262 866	9	10	72	96	72	117	414	2110	483	212	↓	
Canada	92 985	28	16	121	118	125	60	160	372	161	165	↑	
Turkey	179 063	25	15	246	148	278	225	303	722	193	135	↓	
Spain	247 161	36	121	270	322	123	267	311	1253	266	132	↓	
Brazil	142 598	73	176	148	267	302	148	44	406	141	97	↓	
United States	243 695	82	151	427	350	107	322	372	860	90	81	↓	
Mexico	44 801	19	44	58	71	24	98	27	2733	35	63	↑	
Sweden	246 749	69	27	371	404	310	68	174	1298	95	58	↓	
Argentina	202 078	16	167	212	179	521	191	96	848	70	36	↓	
Ecuador	49 695	19	29	255	129	120	123	835	4385	40	29	↓	
South Africa	63 675	28	97	71	93	80	172	103	50	23	24	↑	
Bolivia	78 438	32	96	23	108	160	57	94	295	20	14	↓	
China (exc. Hong Kong)	237	0	0	0	0	0	0	0	1	5	11	↑	
Indonesia	22 276	2	9	18	32	27	82	2	67	24	8	↓	
Cambodia	8 240	0	0	0	1	32	41	5	10	5	2	↓	
India	31 493	16	13	189	146	117	66	384	73	1	1	↓	

Data via Johns Hopkins CSSE

*France : correction on May 20th of 349 116 duplicated cases.

[Des indicateurs plus précis pour le suivi des cas confirmés de Covid-19 \(santepubliquefrance.fr\)](https://santepubliquefrance.fr)

5. World, deaths per million population, selected countries

	Total deaths per million population since start of the pandemic	Average new daily deaths per million population										Last 7 days	7 days vs 28 days trend
		Q2 2020	Q3 2020	Q4 2020	Q1 2021	Q2 2021	Q3 2021	Q4 2021	Q1 2022	Last 28 days			
Hong Kong	1151	0.1	0.3	0.5	0.8	0.7	3.4	0.1	11.3	26.0	14.1	↓	
United Kingdom	2496	0.0	0.0	0.0	0.0	0.0	2.2	1.5	2.7	3.6	8.5	↑	
South Korea	366	3.3	0.2	3.2	3.3	0.8	0.3	1.8	2.3	6.2	6.0	↓	
Finland	603	4.4	0.3	5.4	5.3	2.5	0.7	1.1	2.8	4.9	4.9	↓	
Austria	1802	0.7	0.1	6.6	3.9	1.7	0.4	3.3	2.6	4.0	4.4	↑	
Norway	496	0.5	2.6	2.2	4.6	1.5	5.0	0.7	2.5	6.1	4.0	↓	
Denmark	1011	1.0	0.1	1.2	2.2	0.2	0.2	1.2	1.1	4.9	3.4	↓	
Australia	259	0.0	0.3	0.0	0.0	0.0	0.2	0.4	1.7	1.4	2.9	↑	
Germany	1573	0.1	0.6	0.4	0.1	1.9	0.4	0.3	3.1	2.7	2.8	↑	
Chile	3003	3.3	4.0	2.2	3.8	5.5	2.8	0.9	10.3	25.2	2.5	↓	
Italy	2649	0.0	0.0	0.1	0.2	0.1	0.1	0.7	3.0	2.3	2.4	↑	
Belgium	2686	8.6	0.3	9.0	3.4	2.1	0.4	2.6	2.4	1.9	2.1	↑	
Sweden	1832	0.6	0.4	1.7	1.4	2.4	1.9	2.4	3.2	2.7	2.0	↓	
Portugal	2134	4.7	0.8	4.4	5.9	1.3	1.3	0.7	2.8	1.9	1.8	↓	
United States	2988	0.0	0.0	0.0	0.0	0.0	2.2	1.5	5.2	2.4	1.7	↓	
France	2147	1.1	0.1	3.2	5.7	1.9	0.4	2.4	2.3	1.7	1.6	↓	
Israel	1239	0.1	0.1	0.2	0.5	0.5	0.2	0.1	4.0	0.8	1.2	↑	
Spain	2194	1.7	0.1	7.5	3.1	0.6	0.4	1.4	3.1	1.1	1.0	↓	
Brazil	3133	3.1	4.3	2.6	6.7	10.2	4.1	1.1	2.2	1.2	0.8	↓	
Canada	996	2.5	0.2	1.8	2.1	1.0	0.5	0.7	2.1	0.6	0.8	↑	
Netherlands	1292	1.5	0.4	5.2	10.8	0.3	0.9	1.0	0.7	0.8	0.7	↓	
Switzerland	1584	0.3	0.8	3.7	3.8	5.0	1.3	10.4	1.8	1.6	0.7	↓	
Mexico	2536	0.4	0.0	0.3	0.5	0.2	0.1	0.9	2.1	0.8	0.6	↓	
Turkey	1178	6.1	0.3	5.0	8.7	0.2	1.4	1.9	2.1	0.9	0.5	↓	
Japan	225	2.4	4.2	4.1	6.7	2.6	3.8	1.9	0.9	0.8	0.5	↓	
Argentina	2862	0.3	3.8	6.4	3.1	9.4	5.1	0.5	2.7	0.9	0.4	↓	
Vietnam	443	0.0	0.0	0.0	0.0	0.0	2.2	1.5	1.2	0.6	0.4	↓	
Ecuador	2041	0.6	0.0	0.4	0.6	0.2	0.2	1.2	4.7	0.3	0.3	↑	
Indonesia	575	4.1	0.2	6.9	6.5	3.3	0.6	1.2	0.5	0.5	0.2	↓	
Colombia	2775	0.7	4.9	3.7	4.5	9.4	4.3	0.8	2.2	0.3	0.2	↓	
South Africa	1709	5.4	0.6	3.1	5.2	1.3	0.3	0.5	1.7	0.2	0.1	↓	
Bolivia	1902	1.1	6.5	1.1	3.0	4.3	1.9	0.9	2.2	1.3	0.1	↓	
India	382	0.4	1.6	2.2	3.8	0.3	1.7	0.6	0.3	0.2	0.0	↓	
Cambodia	185	0.0	0.0	0.0	0.0	0.4	1.1	0.5	0.0	0.0	0.0	↓	
China (exc. Hong Kong)	3	0.0	0.0	0.0	0.0	0.0	0.0	0.0	0.0	0.0	0.0	↓	

Data via Johns Hopkins University (CSSE)

6. United States, cases per million population

	Total cases per million population since start of the pandemic	Average new daily cases per million population								Last 28 days	Last 7 days	7 days vs 28 days trend
		Q2 2020	Q3 2020	Q4 2020	Q1 2021	Q2 2021	Q3 2021	Q4 2021	Q1 2022			
Alaska	339 931	15	114	567	241	126	645	632	1383	290	286	↓
Vermont	188 692	16	9	99	211	90	161	536	937	228	253	↑
Rhode Island	342 691	169	81	648	518	159	203	603	1377	182	239	↑
New York	258 201	181	37	289	511	137	174	589	873	148	200	↑
Massachusetts	247 825	151	44	383	420	119	161	518	907	146	194	↑
Washington	192 307	40	80	225	172	126	294	273	894	139	181	↑
Kentucky	294 983	37	129	478	402	94	550	401	1147	233	175	↓
Colorado	235 059	57	71	497	247	183	214	487	811	185	174	↓
New Jersey	248 838	190	47	390	475	142	161	501	802	126	168	↑
Connecticut	207 614	134	34	391	389	119	125	365	712	109	167	↑
Maine	176 474	24	17	152	217	151	169	459	743	145	152	↑
Arizona	276 700	118	208	451	491	80	297	430	950	131	134	↑
Hawaii	170 900	6	90	72	69	54	318	259	1015	108	120	↑
Illinois	242 911	119	131	573	247	128	202	448	813	96	111	↑
Virginia	254 569	83	125	345	424	108	335	432	947	111	104	↓
Delaware	267 304	126	102	411	426	169	259	529	914	90	94	↑
Wisconsin	272 857	51	175	743	221	78	247	580	896	71	84	↑
Michigan	239 641	69	73	425	242	279	163	610	762	84	82	↓
Minnesota	254 027	70	121	609	205	167	204	600	811	72	78	↑
Oklahoma	261 640	37	202	560	417	50	428	261	916	78	74	↓
California	230 849	65	160	431	378	43	237	213	1018	80	71	↓
Oregon	167 448	21	64	207	135	114	313	235	753	62	71	↑
Maryland	167 841	120	103	273	248	93	126	339	540	53	66	↑
New Mexico	247 431	62	90	588	259	73	246	503	899	67	66	↓
North Carolina	251 143	69	149	341	397	104	395	302	966	93	63	↓
Pennsylvania	217 662	73	62	411	335	164	185	503	653	53	58	↑
Nevada	229 852	62	217	511	285	107	309	223	810	237	56	↓
Idaho	248 779	34	219	602	245	89	379	377	783	150	52	↓
Mississippi	267 330	97	259	430	334	61	609	202	946	40	51	↑
Ohio	228 985	47	95	508	302	88	281	560	628	43	47	↑
Iowa	240 716	100	207	663	245	78	269	425	652	35	46	↑
West Virginia	278 059	17	79	421	350	137	463	532	1063	78	44	↓
Georgia	235 713	80	242	357	411	78	455	267	695	91	44	↓
South Carolina	285 451	75	235	337	527	96	550	249	1075	35	43	↑
Wyoming	269 998	26	84	722	228	114	532	470	786	36	38	↑
Montana	255 269	8	123	696	239	95	379	475	787	41	36	↓
Alabama	264 432	84	258	458	349	80	544	222	913	59	36	↓
Utah	289 655	73	172	690	378	101	317	436	1019	37	31	↓
Texas	232 627	61	230	373	391	79	400	198	818	106	31	↓
Indiana	251 366	71	120	632	289	110	340	456	741	31	30	↓
North Dakota	314 961	50	261	1008	154	110	306	599	1009	44	30	↓
Tennessee	296 056	66	243	622	366	89	575	293	959	33	28	↓
Arkansas	276 189	74	227	509	388	69	528	254	992	101	27	↓
Missouri	230 997	37	192	549	255	79	354	333	737	58	26	↓
Louisiana	251 514	125	256	346	310	86	606	206	821	26	24	↓
South Dakota	268 178	83	192	943	234	84	252	420	735	28	22	↓
Nebraska	247 092	108	148	681	244	86	236	403	811	22	11	↓
Kansas	264 641	53	174	612	300	57	338	412	966	23	10	↓
Florida	274 005	75	280	312	380	157	616	317	876	45	0	↓

Data via Johns Hopkins CSSE

7. United States, deaths per million population

	Total deaths per million population since start of the pandemic	Average new daily deaths per million population								Last 28 days	Last 7 days	7 days vs 28 days trend
		Q2 2020	Q3 2020	Q4 2020	Q1 2021	Q2 2021	Q3 2021	Q4 2021	Q1 2022			
Arizona	4 078	2.4	6.0	4.8	12.4	1.5	3.1	6.3	7.8	7.8	8.1	↑
Kentucky	3 381	1.4	1.5	3.5	8.6	2.8	3.8	8.1	6.1	8.1	6.8	↓
Tennessee	3 789	0.9	2.9	7.1	8.1	1.1	4.1	9.1	7.9	4.5	5.8	↑
New Mexico	3 506	2.6	2.0	8.3	7.7	2.1	2.4	5.5	7.2	5.3	5.2	↓
Kansas	2 882	1.0	1.5	7.7	8.2	0.9	3.4	3.5	4.1	4.8	5.1	↑
Oregon	1 726	0.5	0.9	2.4	2.4	1.0	2.6	4.8	4.0	3.6	4.6	↑
Oklahoma	3 953	1.0	1.8	4.0	6.9	6.8	4.3	9.5	5.6	5.3	4.3	↓
Georgia	3 510	2.8	4.3	4.0	8.5	2.5	4.8	5.5	5.7	3.8	3.8	↓
Delaware	2 948	6.4	1.0	4.6	5.7	1.5	2.9	3.7	5.1	4.3	3.7	↓
North Dakota	2 954	1.1	2.4	15.0	2.9	0.9	1.2	5.9	2.3	1.3	3.6	↑
Arkansas	3 745	1.0	4.0	8.3	7.2	1.0	6.4	5.2	7.7	5.5	3.4	↓
Alabama	3 951	2.1	3.5	5.1	13.0	1.8	6.5	4.8	6.5	4.4	2.4	↓
Florida	3 422	1.7	5.5	3.7	6.1	2.2	8.7	3.8	6.5	3.4	2.4	↓
Nevada	3 291	1.7	3.9	5.4	7.7	1.5	5.2	4.5	7.0	2.8	2.1	↓
Indiana	3 485	4.0	1.7	9.3	6.0	1.3	2.9	5.5	7.5	1.8	1.8	↑
Maine	1 651	0.8	0.3	1.7	3.3	0.9	1.3	4.1	3.6	2.1	1.8	↓
South Carolina	3 428	1.5	5.6	4.0	8.3	1.4	5.6	4.6	6.4	2.2	1.6	↓
Michigan	3 582	6.5	1.0	6.5	4.6	4.3	1.5	7.3	3.9	2.3	1.6	↓
South Dakota	3 270	1.1	1.6	15.5	5.6	1.2	1.3	4.2	5.0	1.8	1.6	↓
Idaho	2 737	0.5	2.3	5.9	3.3	1.2	4.6	7.6	4.0	1.6	1.5	↓
Ohio	3 265	2.4	1.7	8.5	5.4	1.2	2.8	7.6	5.8	0.6	1.5	↑
Nebraska	2 153	1.5	1.1	6.6	3.0	0.5	3.2	2.8	5.2	2.6	1.5	↓
Louisiana	3 695	7.0	5.4	4.6	6.3	1.4	7.5	2.4	4.7	2.4	1.5	↓
Pennsylvania	3 468	5.7	1.2	6.7	7.9	2.2	1.5	6.2	6.6	1.7	1.3	↓
Washington	1 647	1.6	1.1	1.9	2.6	1.0	2.6	3.0	3.9	1.9	1.2	↓
Wyoming	3 103	0.4	0.6	7.3	5.0	0.9	4.7	10.0	5.1	2.9	1.2	↓
California	2 259	1.6	2.7	2.8	9.1	1.4	1.6	2.1	3.5	2.0	1.1	↓
Montana	3 046	0.2	1.6	7.9	4.9	2.3	3.5	9.1	5.6	1.1	1.1	↓
Texas	3 021	1.0	5.0	4.4	7.7	1.5	4.8	4.0	4.5	1.7	1.0	↓
Wisconsin	2 463	1.5	1.1	7.2	4.0	1.5	1.4	4.3	6.0	4.2	0.9	↓
New Jersey	3 748	18.1	1.3	3.6	6.9	2.3	1.2	2.0	5.7	0.9	0.9	↑
Minnesota	2 247	2.9	1.2	6.3	3.0	1.5	1.1	4.6	7.5	1.4	0.9	↓
Illinois	2 832	5.9	1.7	7.8	4.9	1.8	1.5	2.4	4.9	1.1	0.9	↓
Virginia	3 113	2.4	2.2	3.6	8.5	1.8	2.7	5.7	7.3	3.6	0.8	↓
Massachusetts	2 922	12.7	2.2	4.7	7.7	1.3	1.0	2.6	7.3	1.0	0.7	↓
Utah	1 475	0.6	1.0	2.7	3.0	0.9	1.9	2.9	3.2	2.4	0.7	↓
Vermont	994	0.8	0.0	1.4	1.6	0.5	1.1	2.7	2.6	0.7	0.7	↓
North Carolina	2 217	1.4	2.2	3.3	5.7	1.4	3.2	3.0	4.5	1.2	0.7	↓
Connecticut	3 028	13.1	0.6	4.5	5.9	1.2	1.1	1.6	3.3	1.8	0.6	↓
Mississippi	4 170	3.9	6.9	6.6	8.4	1.4	8.0	3.1	-0.3	2.0	0.6	↓
Maryland	2 377	5.8	1.4	3.5	4.4	2.6	1.3	2.4	7.2	0.8	0.5	↓
New York	3 497	16.5	0.7	2.6	7.0	1.9	1.1	2.3	4.9	0.8	0.5	↓
Iowa	2 996	2.5	2.2	8.7	6.5	1.4	1.5	4.5	5.3	2.2	0.4	↓
Hawaii	976	0.1	0.9	1.2	1.4	0.4	2.0	2.4	2.6	0.7	0.3	↓
Rhode Island	3 327	10.0	1.5	8.3	7.2	1.2	1.1	2.3	4.8	3.5	0.3	↓
Colorado	2 080	3.1	0.7	5.2	2.5	1.3	1.4	5.1	8.4	0.9	0.1	↓

Data via Johns Hopkins CSSE

8. Canada, cases per million population

	Total cases per million population since start of the pandemic	Average new daily cases per million population										Last 7 days	7 days vs 28 days trend
		Q2 2020	Q3 2020	Q4 2020	Q1 2021	Q2 2021	Q3 2021	Q4 2021	Q1 2022	Last 28 days			
Prince Edward Island	177 760	0	2	2	5	3	6	41	1753	2119	2305	↑	
Nova Scotia	60 244	10	0	4	3	46	9	123	425	434	611	↑	
Newfoundland	77 257	2	0	2	13	8	8	50	716	837	549	↓	
Quebec	115 350	65	26	164	138	81	44	245	474	232	355	↑	
Ontario	80 382	26	13	98	128	146	31	126	307	157	211	↑	
Alberta	123 533	18	24	202	120	208	163	146	465	129	178	↑	
Saskatchewan	112 180	6	10	124	172	142	170	165	437	119	145	↑	
British Columbia	69 398	4	13	90	104	102	82	145	221	38	21	↓	
Manitoba	97 811	2	13	179	76	176	34	155	447	63	0	↓	
New Brunswick	61 674	1	0	6	14	10	26	140	488	324	0	↓	

Data via <https://ici.radio-canada.ca/info/2020/coronavirus-covid-19-pandemie-cas-carte-maladie-symptomes-propagation/>, Statistics Canada

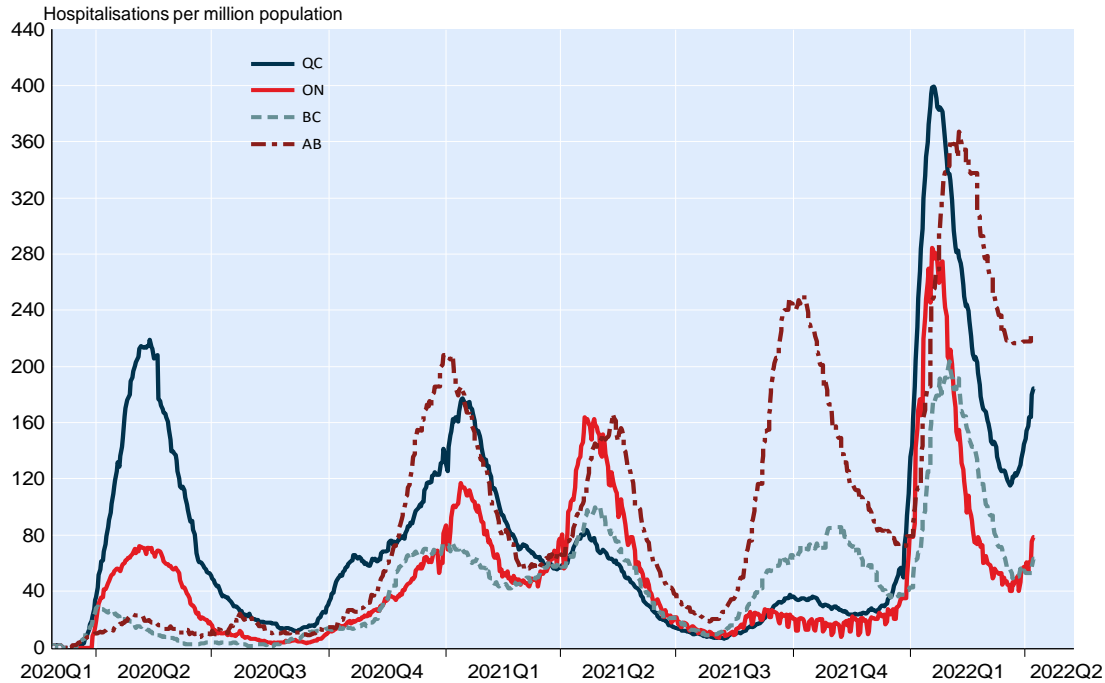
9. Canada, deaths per million population

	Total deaths per million population since start of the pandemic	Average new daily deaths per million population										Last 7 days	7 days vs 28 days trend
		Q2 2020	Q3 2020	Q4 2020	Q1 2021	Q2 2021	Q3 2021	Q4 2021	Q1 2022	Last 28 days			
Newfoundland	234	0.0	0.0	0.0	0.0	0.0	0.0	0.2	1.8	3.4	3.3	↓	
Saskatchewan	1 043	0.1	0.1	1.2	2.6	1.2	1.2	2.4	2.4	2.8	2.4	↓	
Quebec	1 689	7.1	0.3	3.1	3.0	0.7	0.2	0.4	3.4	1.4	1.9	↑	
Alberta	928	0.4	0.3	1.9	2.4	0.8	1.0	1.5	1.9	0.9	1.0	↑	
Ontario	744	2.0	0.1	1.2	2.1	1.3	0.5	0.3	1.7	0.0	0.9	↑	
Prince Edward Island	119	0.0	0.0	0.0	0.0	0.0	0.0	0.0	1.3	0.7	0.9	↑	
British Columbia	584	0.3	0.1	1.4	1.2	0.6	0.4	1.0	1.2	0.5	0.2	↓	
New Brunswick	447	0.0	0.0	0.1	0.3	0.2	0.2	1.4	2.7	1.5	0.0	↓	
Manitoba	1 261	0.0	0.1	5.1	2.2	1.6	0.6	1.4	2.8	0.8	0.0	↓	
Nova Scotia	216	0.7	0.0	0.0	0.0	0.3	0.1	0.2	1.2	0.0	0.0	↓	

Data via <https://ici.radio-canada.ca/info/2020/coronavirus-covid-19-pandemie-cas-carte-maladie-symptomes-propagation/>, Statistics Canada

10. Canada: Hospitalized persons positive for COVID-19

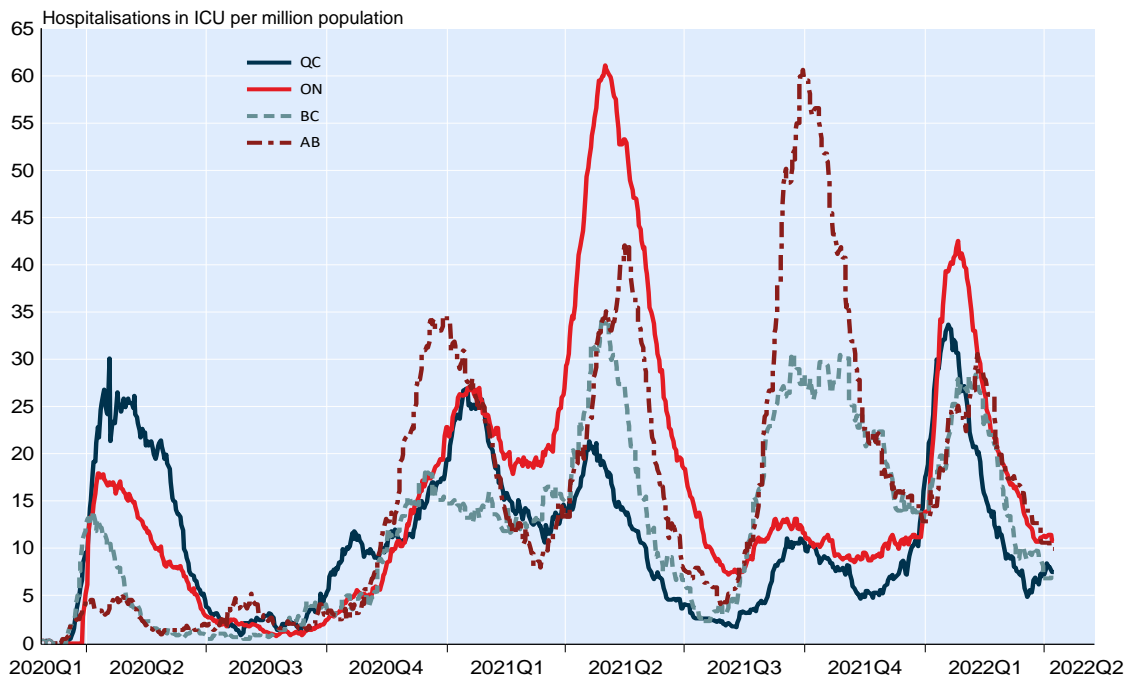
Hospitalisations per million population including intensive care



NBF Economics and Strategy (data via INSPQ, Radio Canada <https://ici.radio-canada.ca/info/2020/coronavirus-covid-19-pandemie-cas-carte-maladie-symptomes-propagation/>)

11. Canada: Current hospitalisations in ICU related to COVID-19

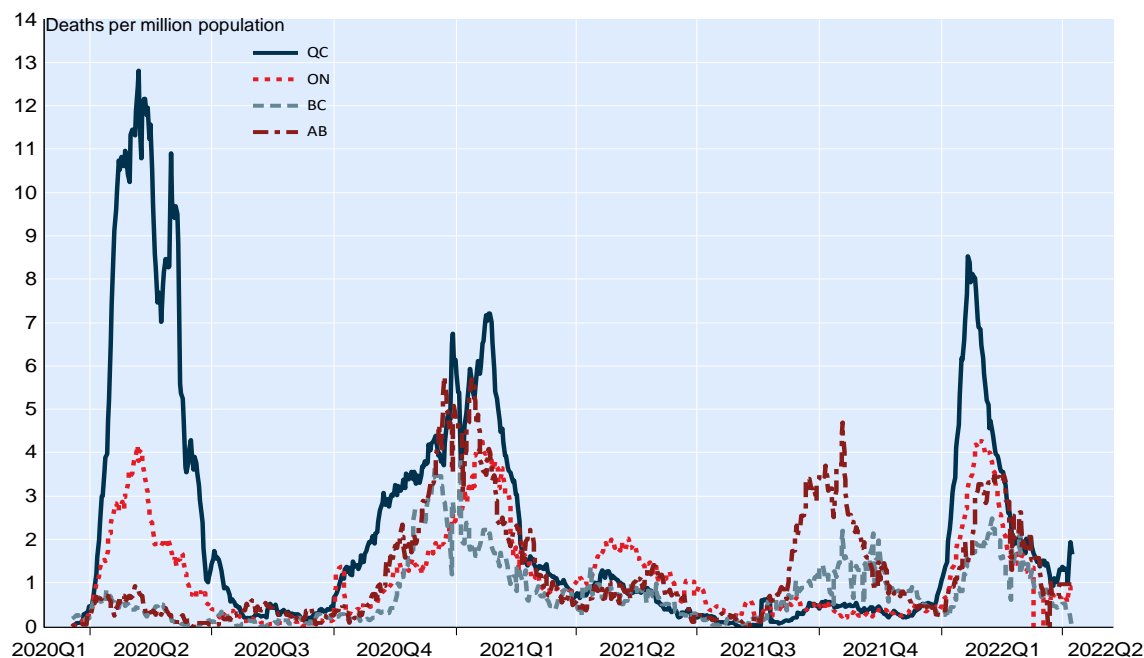
People in intensive care per million population



NBF Economics and Strategy (data via INSPQ, Radio Canada <https://ici.radio-canada.ca/info/2020/coronavirus-covid-19-pandemie-cas-carte-maladie-symptomes-propagation/>)

12. Canada: Deaths of people positive to COVID-19

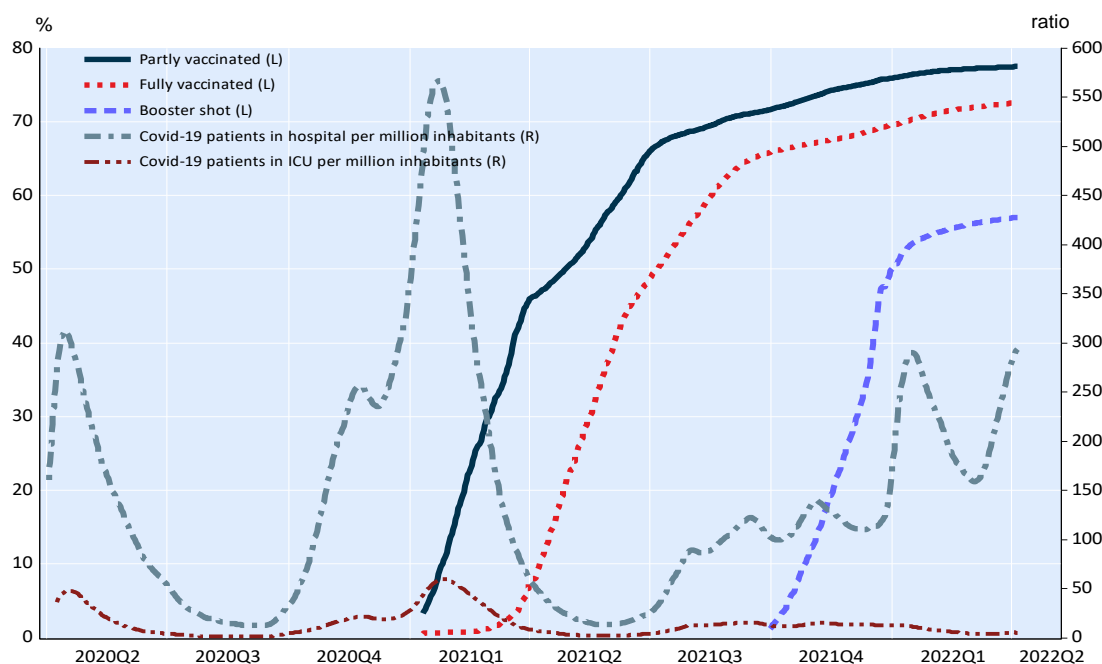
Deaths per million population, 7 day moving average



NBF Economics and Strategy (data via Radio-Canada <https://ici.radio-canada.ca/info/2020/coronavirus-covid-19-pandemie-cas-carte->

13. UK: Vaccination, Covid-19 hospitalisations and ICU

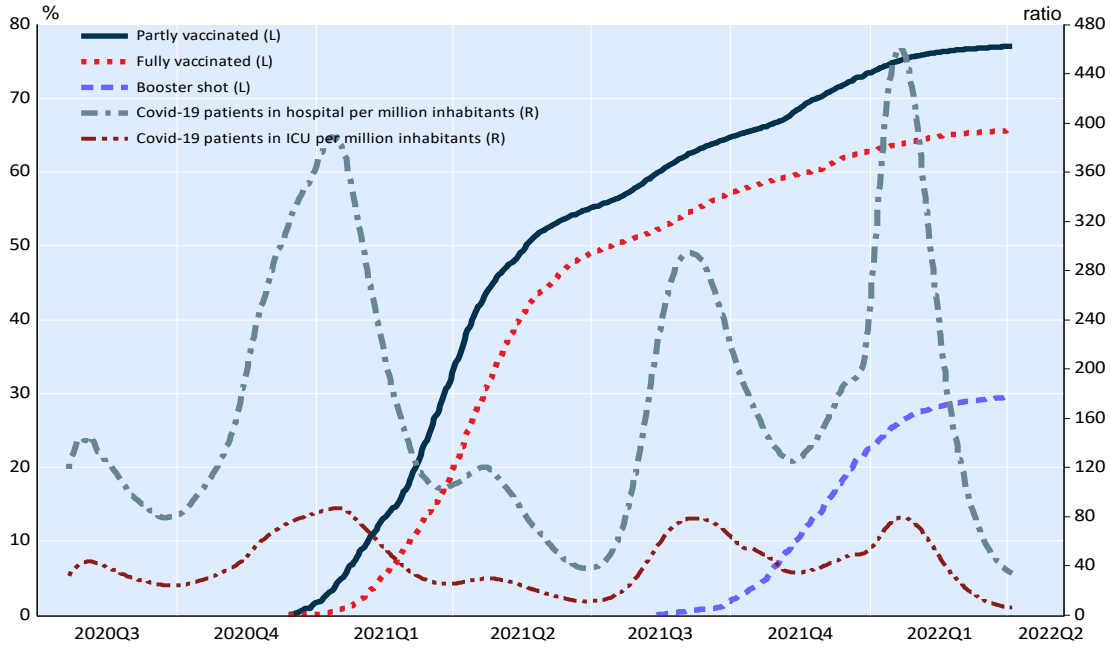
Population vaccinated, current patients in hospital and ICU per million inhabitants, 7-day moving average



NBF Economics and Strategy (<https://ourworldindata.org/covid-vaccinations>)

14. US: Vaccination, Covid-19 hospitalisations and ICU

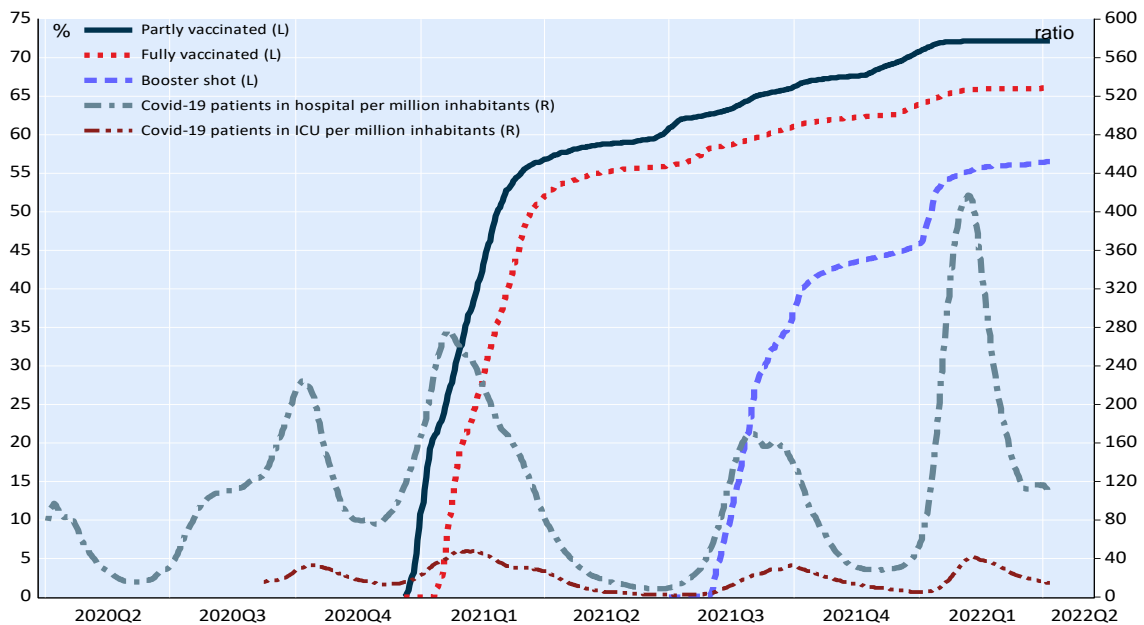
Population vaccinated, current patients in hospital and ICU per million inhabitants, 7-day moving average



NBF Economics and Strategy (<https://ourworldindata.org/covid-vaccinations>)

15. Israel: Vaccination, Covid-19 hospitalisations and ICU

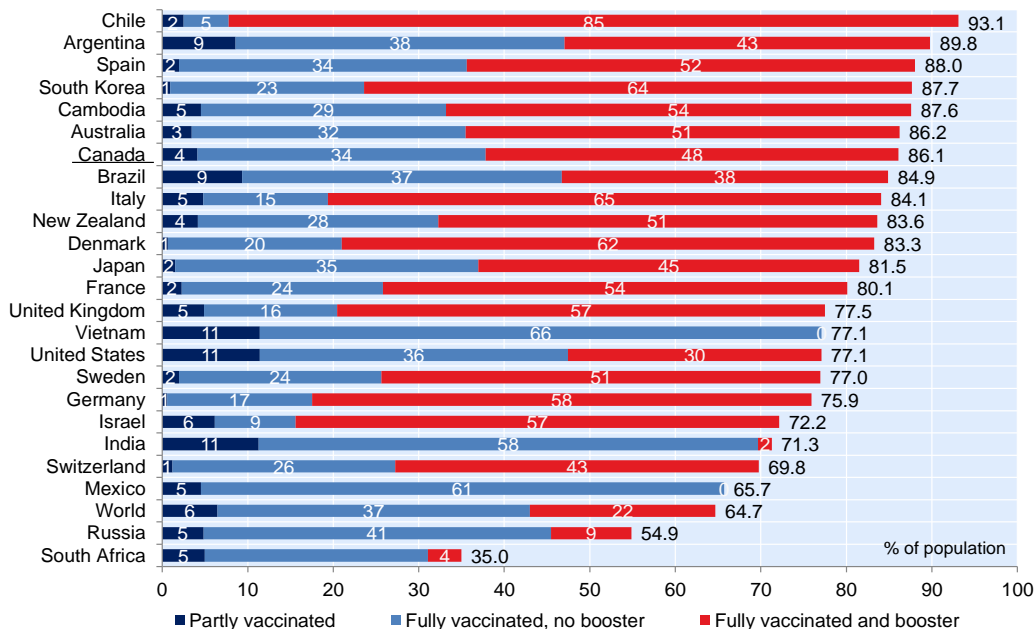
Population vaccinated, current patients in hospital and ICU per million inhabitants, 7-day moving average



NBF Economics and Strategy (<https://ourworldindata.org/covid-vaccinations>)

16. World: Perspective on vaccine rollout

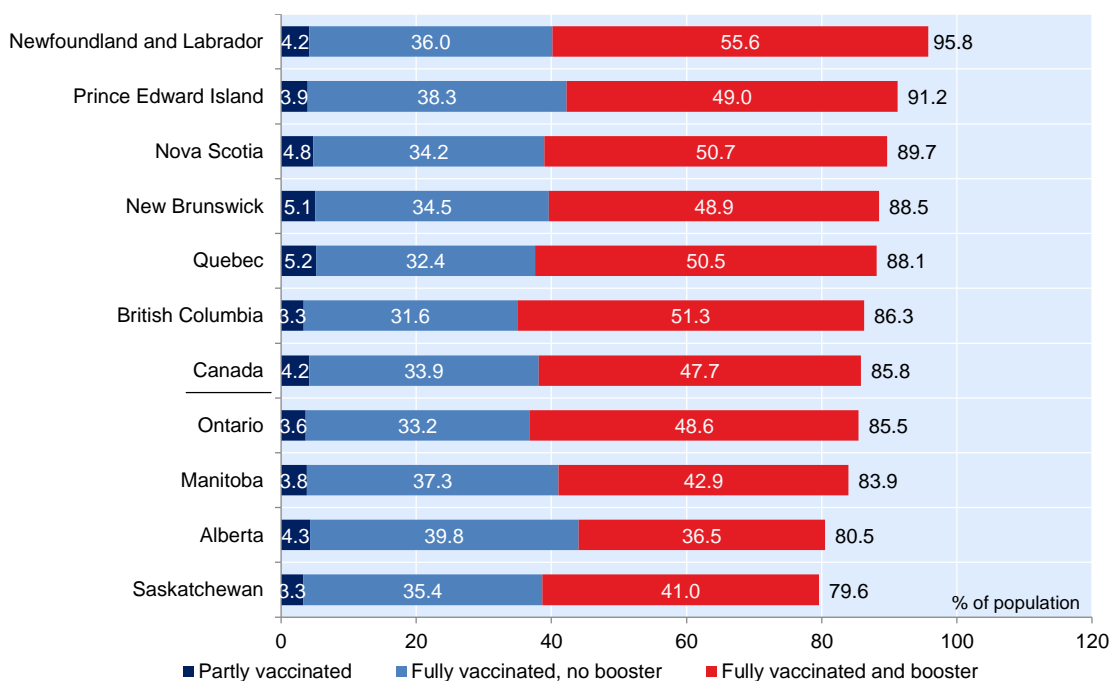
Share of population partly and fully vaccinated against COVID-19



NBF Economics and Strategy (data via <https://ourworldindata.org/covid-vaccinations>)

17. Canada: Perspective on vaccine rollout

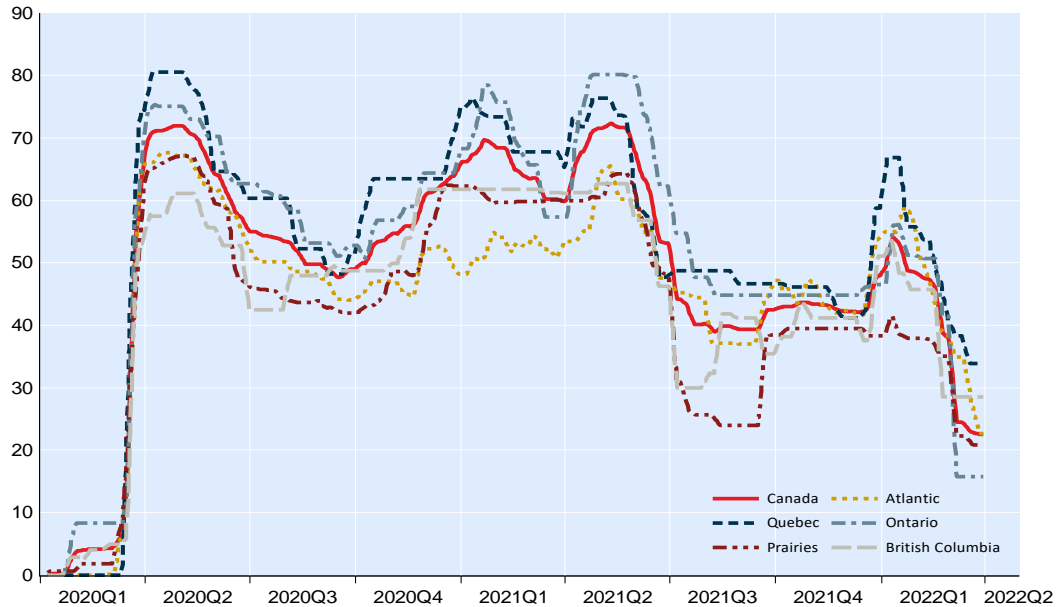
Share of population partly and fully vaccinated against COVID-19



NBF Economics and Strategy (data via <https://covid19tracker.ca/vaccinationtracker.html>)

18. Canada: Covid-19 stringency index

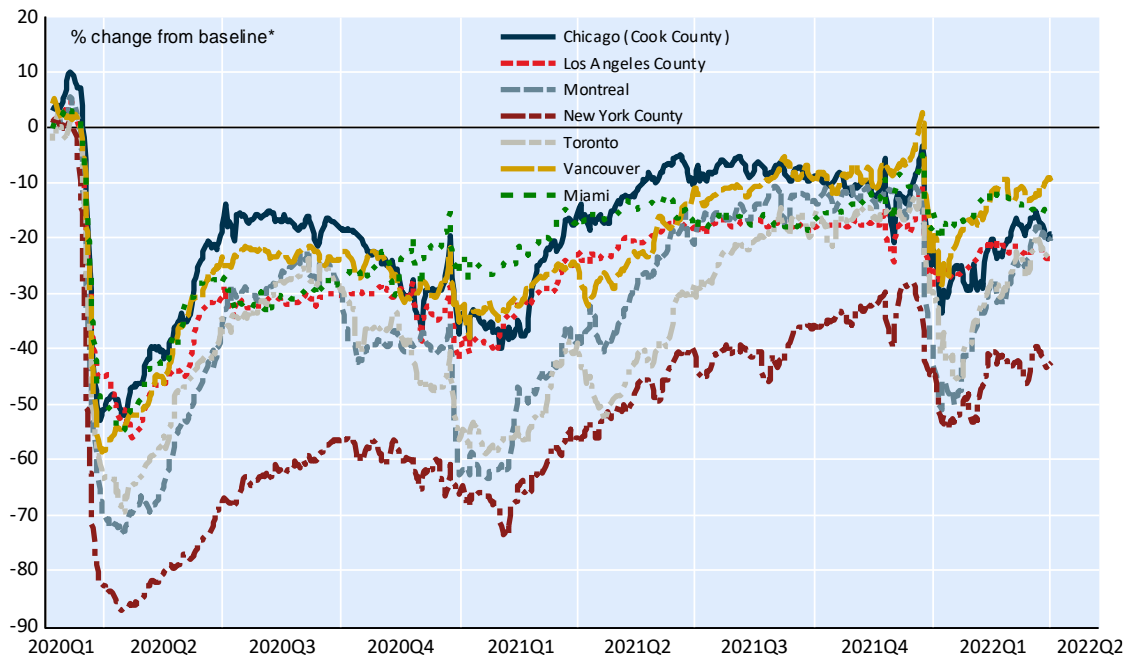
Stringency of policy related to containment restrictions and public information campaigns, 7-day mov. average



NBF Economics and Strategy (data via Bank of Canada)

19. Canada and United States*: Back to normal index

Google mobility data for retail & recreation, 7-day mov. average



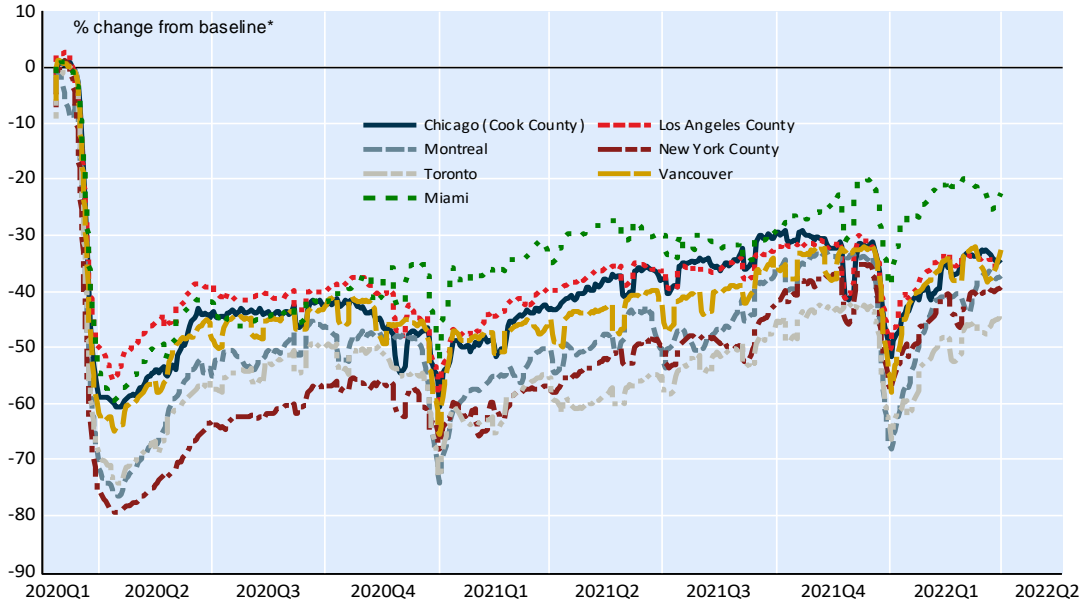
* 3 biggest cities of Canada and United States and Miami

**The baseline is the median value of the corresponding day of the week during the 5 week period from January 3 to February 6 2020

NBF Economics and Strategy (data via Google)

20. Canada and United States*: Back to normal index (2)

Google mobility data for transit and workplaces, workdays only, 5-day mov. average



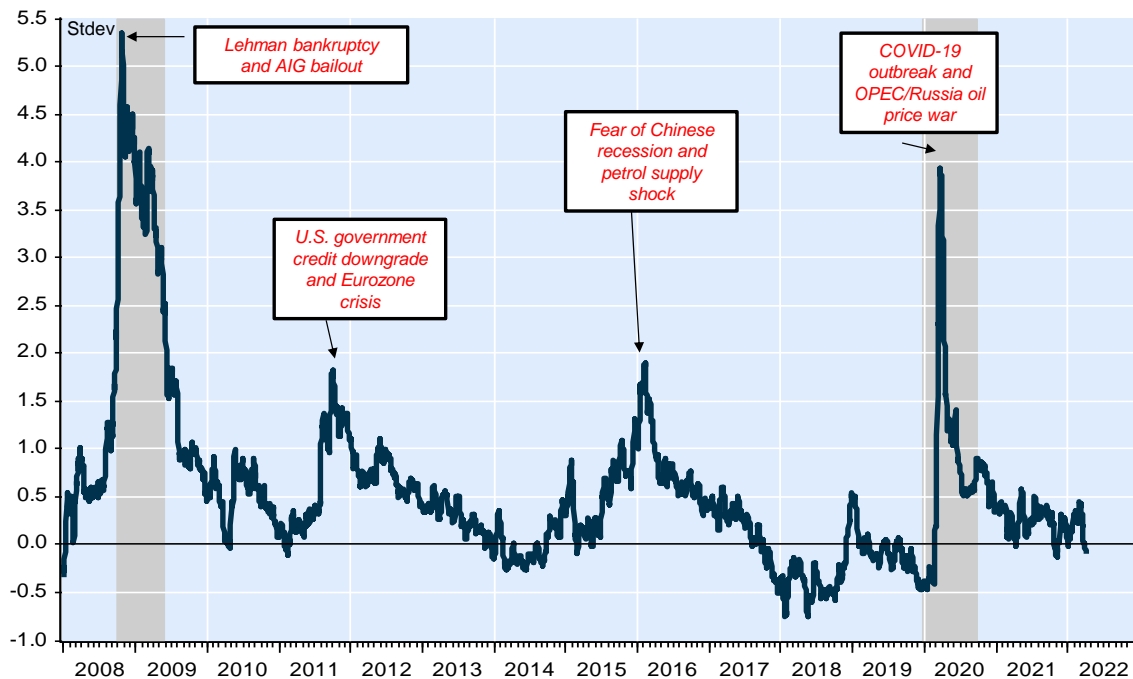
* 3 biggest cities of Canada and United States and Miami

**The baseline is the median value of the corresponding day of the week during the 5 week period from January 3 to February 6 2020

NBF Economics and Strategy (data via Google)

21. Canada: Perspective on financial stress

NBF financial stress index



NBF Economics and Strategy (data via Bloomberg and Refinitiv)

Economics and Strategy

Montreal Office

514-879-2529

Stéfane Marion

Chief Economist and Strategist
stefane.marion@nbc.ca

Kyle Dahms

Economist
kyle.dahms@nbc.ca

Alexandra Ducharme

Economist
alexandra.ducharme@nbc.ca

Matthieu Arseneau

Deputy Chief Economist
matthieu.arseneau@nbc.ca

Daren King

Economist
daren.king@nbc.ca

Angelo Katsoras

Geopolitical Analyst
angelo.katsoras@nbc.ca

Jocelyn Paquet

Economist
jocelyn.paquet@nbc.ca

Toronto Office

416-869-8598

Warren Lovely

Chief Rates and Public Sector Strategist
warren.lovely@nbc.ca

Taylor Schleich

Rates Strategist
taylor.schleich@nbc.ca

General

This Report was prepared by National Bank Financial, Inc. (NBF), (a Canadian investment dealer, member of IIROC), an indirect wholly owned subsidiary of National Bank of Canada. National Bank of Canada is a public company listed on the Toronto Stock Exchange.

The particulars contained herein were obtained from sources which we believe to be reliable but are not guaranteed by us and may be incomplete and may be subject to change without notice. The information is current as of the date of this document. Neither the author nor NBF assumes any obligation to update the information or advise on further developments relating to the topics or securities discussed. The opinions expressed are based upon the author(s) analysis and interpretation of these particulars and are not to be construed as a solicitation or offer to buy or sell the securities mentioned herein, and nothing in this Report constitutes a representation that any investment strategy or recommendation contained herein is suitable or appropriate to a recipient's individual circumstances. In all cases, investors should conduct their own investigation and analysis of such information before taking or omitting to take any action in relation to securities or markets that are analyzed in this Report. The Report alone is not intended to form the basis for an investment decision, or to replace any due diligence or analytical work required by you in making an investment decision.

This Report is for distribution only under such circumstances as may be permitted by applicable law. This Report is not directed at you if NBF or any affiliate distributing this Report is prohibited or restricted by any legislation or regulation in any jurisdiction from making it available to you. You should satisfy yourself before reading it that NBF is permitted to provide this Report to you under relevant legislation and regulations.

National Bank of Canada Financial Markets is a trade name used by National Bank Financial and National Bank of Canada Financial Inc.

Canadian Residents

NBF or its affiliates may engage in any trading strategies described herein for their own account or on a discretionary basis on behalf of certain clients and as market conditions change, may amend or change investment strategy including full and complete divestment. The trading interests of NBF and its affiliates may also be contrary to any opinions expressed in this Report.

NBF or its affiliates often act as financial advisor, agent or underwriter for certain issuers mentioned herein and may receive remuneration for its services. As well NBF and its affiliates and/or their officers, directors, representatives, associates, may have a position in the securities mentioned herein and may make purchases and/or sales of these securities from time to time in the open market or otherwise. NBF and its affiliates may make a market in securities mentioned in this Report. This Report may not be independent of the proprietary interests of NBF and its affiliates.

This Report is not considered a research product under Canadian law and regulation, and consequently is not governed by Canadian rules applicable to the publication and distribution of research Reports, including relevant restrictions or disclosures required to be included in research Reports.

UK Residents

This Report is a marketing document. This Report has not been prepared in accordance with EU legal requirements designed to promote the independence of investment research and it is not subject to any prohibition on dealing ahead of the dissemination of investment research. In respect of the distribution of this Report to UK residents, NBF has approved the contents (including, where necessary, for the purposes of Section 21(1) of the Financial Services and Markets Act 2000). This Report is for information purposes only and does not constitute a personal recommendation, or investment, legal or tax advice. NBF and/or its parent and/or any companies within or affiliates of the National Bank of Canada group and/or any of their directors, officers and employees may have or may have had interests or long or short positions in, and may at any time make purchases and/or sales as principal or agent, or may act or may have acted as market maker in the relevant investments or related investments discussed in this Report, or may act or have acted as investment and/or commercial banker with respect hereto. The value of investments, and the income derived from them, can go down as well as up and you may not get back the amount invested. Past performance is not a guide to future performance. If an investment is denominated in a foreign currency, rates of exchange may have an adverse effect on the value of the investment. Investments which are illiquid may be difficult to sell or realise; it may also be difficult to obtain reliable information about their value or the extent of the risks to which they are exposed. Certain transactions, including those involving futures, swaps, and other derivatives, give rise to substantial risk and are not suitable for all investors. The investments contained in this Report are not available to retail customers and this Report is not for distribution to retail clients (within the meaning of the rules of the Financial Conduct Authority). Persons who are retail clients should not act or rely upon the information in this Report. This Report does not constitute or form part of any offer for sale or subscription of or solicitation of any offer to buy or subscribe for the securities described herein nor shall it or any part of it form the basis of or be relied on in connection with any contract or commitment whatsoever.

This information is only for distribution to Eligible Counterparties and Professional Clients in the United Kingdom within the meaning of the rules of the Financial Conduct Authority. NBF is authorised and regulated by the Financial Conduct Authority and has its registered office at 70 St. Mary Axe, London, EC3A 8BE.

NBF is not authorised by the Prudential Regulation Authority and the Financial Conduct Authority to accept deposits in the United Kingdom.

U.S. Residents

With respect to the distribution of this report in the United States of America, National Bank of Canada Financial Inc. ("NBCFI") which is regulated by the Financial Industry Regulatory Authority (FINRA) and a member of the Securities Investor Protection Corporation (SIPC), an affiliate of NBF, accepts responsibility for its contents, subject to any terms set out above. To make further inquiry related to this report, or to effect any transaction, United States residents should contact their NBCFI registered representative.

This report is not a research report and is intended for Major U.S. Institutional Investors only.

This report is not subject to U.S. independence and disclosure standards applicable to research reports.

HK Residents

With respect to the distribution of this report in Hong Kong by NBC Financial Markets Asia Limited ("NBCFMA") which is licensed by the Securities and Futures Commission ("SFC") to conduct Type 1 (dealing in securities) and Type 3 (leveraged foreign exchange trading) regulated activities, the contents of this report are solely for informational purposes. It has not been approved by, reviewed by, verified by or filed with any regulator in Hong Kong. Nothing herein is a recommendation, advice, offer or solicitation to buy or sell a product or service, nor an official confirmation of any transaction. None of the products issuers, NBCFMA or its affiliates or other persons or entities named herein are obliged to notify you of changes to any information and none of the foregoing assume any loss suffered by you in reliance of such information.

The content of this report may contain information about investment products which are not authorized by SFC for offering to the public in Hong Kong and such information will only be available to, those persons who are Professional Investors (as defined in the Securities and Futures Ordinance of Hong Kong ("SFO")). If you are in any doubt as to your status you should consult a financial adviser or contact us. This material is not meant to be marketing materials and is not intended for public distribution. Please note that neither this material nor the product referred to is authorized for sale by SFC. Please refer to product prospectus for full details.

There may be conflicts of interest relating to NBCFMA or its affiliates' businesses. These activities and interests include potential multiple advisory, transactional and financial and other interests in securities and instruments that may be purchased or sold by NBCFMA or its affiliates, or in other investment vehicles which are managed by NBCFMA or its affiliates that may purchase or sell such securities and instruments.

No other entity within the National Bank of Canada group, including National Bank of Canada and National Bank Financial Inc, is licensed or registered with the SFC. Accordingly, such entities and their employees are not permitted and do not intend to: (i) carry on a business in any regulated activity in Hong Kong; (ii) hold themselves out as carrying on a business in any regulated activity in Hong Kong; or (iii) actively market their services to the Hong Kong public.

Copyright

This Report may not be reproduced in whole or in part, or further distributed or published or referred to in any manner whatsoever, nor may the information, opinions or conclusions contained in it be referred to without in each case the prior express written consent of NBF.