

PARC NATIONAL DU MONT-ORFORD

DISCOVERY GUIDE

2019



WELCOME TO THE PARK



The Mont-Orford Massif, a majestic beacon offering an abundance of nature and outdoor activities to be discovered all year round.

Created in 1938, the Parc National du Mont-Orford protects a section of land covering a total area of 59.5 km². From the Mont-Orford Massif, rising to 853 m in elevation, visitors can admire the region's landscape as far as the eye can see. With its diverse mix of waterways, forests, valleys and mountains, the park's territory provides a favourable habitat for a wide variety of plants and animals. In summer, the park's numerous bodies of water delight water sport enthusiasts. In fall, the maple trees charm hikers with their spectacular colours. When winter comes, the park becomes a must-visit for avid cross-country skiers, snowshoers and fat bike enthusiasts.

At any time of the year, the park's marvels await you!

Find out more at sepaq.com/montorford



Hulule
The barred owl

THE BARRED OWL, THE EMBLEM ANIMAL OF THE PARK

Barred owls have brown barring on their chest, streaking on their belly, and a big, round head and brown eyes—all of which distinguish them from other nocturnal birds of prey. They can be found in the territory all seasons of the year and live in the park's dense and mature forests where they find hollows for nesting. These owls are permanent residents of their nesting sites, and they hoot frequently, which helps visitors locate them even in the daytime. However, you'll most often hear them hooting at night.

ANNUAL
QUÉBEC NATIONAL
PARKS CARD

Québec's national parks offer a one-of-a-kind experience. Explore this exceptional world of nature with the Annual Québec National Parks Card, featuring:

- Unlimited access to ALL national parks for 12 full months
- Many exclusive benefits, including a free night of camping

Details at sepaq.com/parkscard

MUST-DOS



A

STUKELY LAKE

A magnificent lake open to a range of activities, with crystal clear water and stunning landscapes. From the beach, you'll admire Mont Chauve along with the small island at its base. On the water, you'll get up close to the Mont-Orford Massif and Miner Island.



B

ÉTANG-FER-DE-LANCE

The Étang-Fer-de-Lance pond hides a peat bog that collects highly mineralized groundwater and runoff water. Its specific ecological conditions make it suitable for vegetation that is common to marsh habitats. Come take in this natural masterpiece from the lookout.



C

MONT-CHAUVE TRAIL

Hike along this magnificent trail and trek to the summit of Mont-Chauve, which climbs to an elevation of nearly 600 metres. From there, you'll have a bird's eye view of Stukely Lake. A wonderful and beginner-friendly mountain hike that you can enjoy in both summer and winter.



D

MOUNTAIN BIKING

Mountain biking is being introduced to the park this summer. Explore our five new trails and ride through a range of forest environments. You'll love this new experience!



E

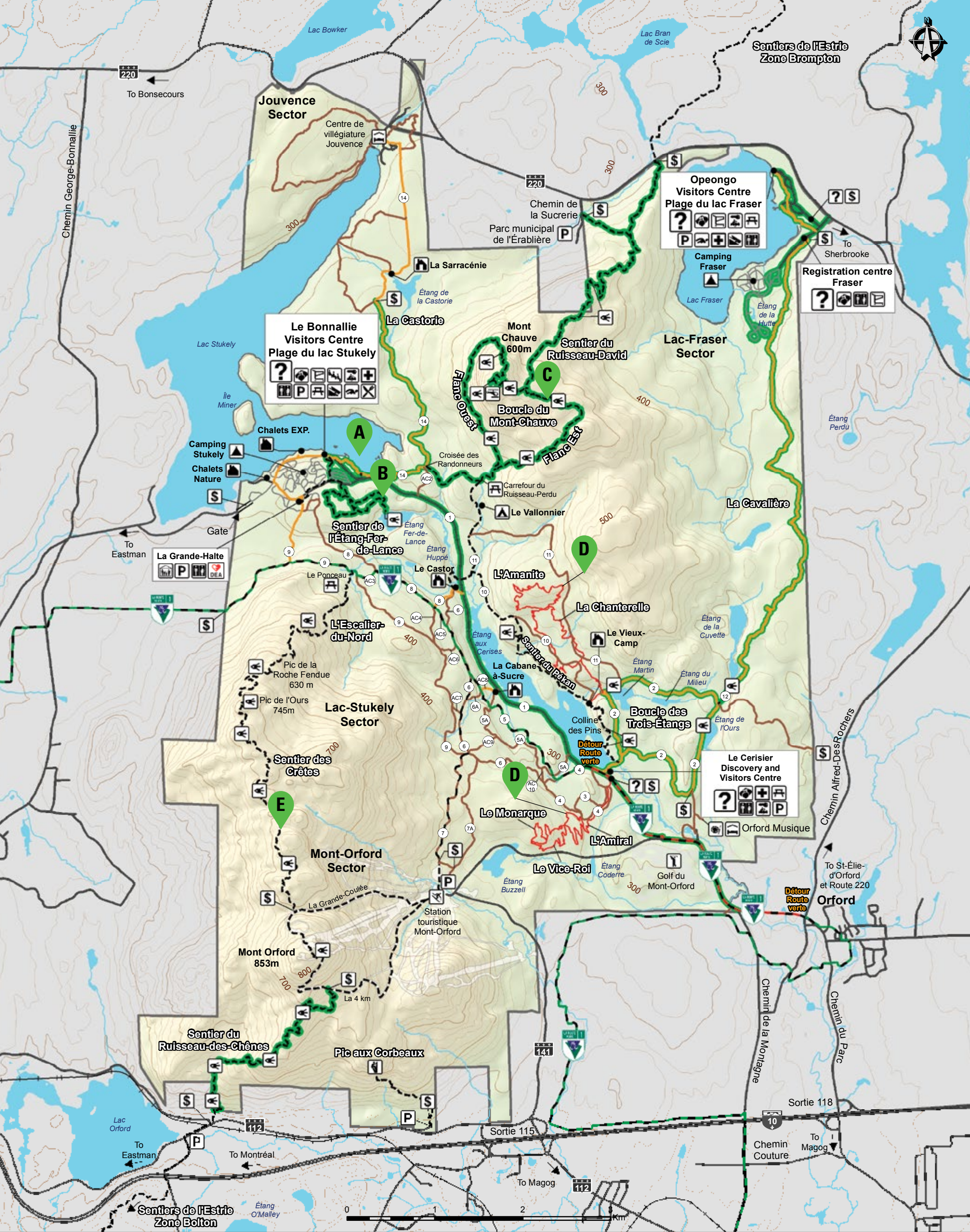
CRÊTES TRAIL

Are you a mountain hiker who enjoys daunting challenges? Set out to conquer the ridges and reach the summits of the Mont-Orford Massif! From the Pic de l'Ours, you'll have a breathtaking 360-degree view of the region.



WINTER IN THE PARK

The park attracts winter sports enthusiasts of all levels. Activities include cross-country skiing, snowshoeing, fat biking and winter hiking. You'll marvel at the beauty and peacefulness of the surroundings.






- | | | | |
|--|--|--|--|
| | | | |
| | | | |
| | | | |
| | | | |
| | | | |
| | | | |
| | | | |
| | | | |
| | | | |
| | | | |
| | | | |




L'information fournie sur cette carte peut changer sans préavis. En cas de disparité, l'information sur le terrain doit prévaloir en tout temps.

Les altitudes sont exprimées en mètres.
 Cette carte intègre de l'information géographique de source gouvernementale.
 Pour des besoins de représentation, certaines données ont subi des transformations et des adaptations qui ont pu modifier la donnée originale.
 Données originales utilisées :
 Années :
 Banque de données Sépaq
 Cartes topographiques à l'échelle de 1/20 000
 Source des données utilisées :
 Ministère de l'Énergie et des Ressources naturelles
 © Gouvernement du Québec

DISCOVER OUR TRAILS

HIKING TRAILS		LENGTH AND DURATION*		DIFFICULTY	ELEVATION	STARTING POINT
	  Trois-Étangs Trail – Take a bike path that meanders along three of the park's ponds: de l'Ours, de la Cuvette and Martin.	5.5 km Loop	2 h	E	50 m	Le Cerisier Discovery and Visitors Centre
	 Pékan – Go as far as the Castor hut while visiting the Colline des Pins and the Colline de la Serpentine.	9.4 km Round trip	3 h 15	I	95 m	
	Les Crêtes – Set out to conquer the ridges and reach the summits! This is a spectacular hike that will lead you to Mont-Orford! (Possibility of parking your vehicle at the Mont-Orford Ski Station. 11.4 km , 5 h one-way)	18.7 km Loop	9 h	H	455 m	Le Bonnallie Visitors Centre
	L'Escalier-du-Nord – Climb the Mont-Orford Massif to Pic de l'Ours by way of Pic de la Roche-Fendue.	12 km Round trip	6 h	H	455 m	
 	  L'Étang-Fer-de-Lance – Une agréable balade dans une érablière vous menant à un belvédère offrant un superbe panorama.	3.5 km Loop	1 h 15	E	50 m	
	 Le Mont-Chauve – Hike along this magnificent trail and trek to the unobstructed summit of Mont Chauve, which climbs to an elevation of nearly 600 metres.	10.6 km Loop	4 h	I	310 m	Parking area at Érablière Municipal Park
	 Le Ruisseau-David – A gentle climb to the summit of Mont Chauve.	9 km Round trip	3 h 30	I	290 m	
	 Le Ruisseau-des-Chênes – Follow this trail along the Des Chênes stream. A magnificent hike through an oak and beech tree forest that will lead you to Mont-Orford.	9.4 km Round trip	4 h	H	410 m	Route 112

 Geocaching courses  Discovery panels  Family experience  Dogs allowed

E : Easy **I** : Intermediate **H** : Hard

* Distances and durations are given for reference for round trips in the summer. The durations do not include breaks.

SUPERVISED ACCESS FOR DOGS



As of May 17, 2019, dogs will be allowed at Parc national du Mont-Orford, in certain designated areas.

All details at sepaq.com/animals

MAIN RULES*

- Dogs must remain in the places where they are authorized at all times.
- Dogs must be kept on a leash no more than three (3) metres in length and under surveillance at all times.
- The person in charge of the dog must pick up the animal's excrement without delay.
- Barking or howling dogs as well as dogs affecting the tranquility and safety of other visitors are not allowed.

*Individuals who fail to comply with any of the rules stated above may be required to leave the area and/or issued a statement of offence, where appropriate.

Compliance with the regulations is essential, and the offer could be reviewed if non-compliance is noted.

AUTHORIZED PLACES

Summer trail

Le Ruisseau-David, Le Ruisseau-des-Chênes, L'Étang-Fer-de-Lance, La Boucle du Mont-Chauve, La Boucle-des-Trois-Étangs, La Castorie and La Cavalière cycling paths

Camping

Lac-Stukely campground: Du Frêne loop, Lac-Fraser campground: Du Colvert, Du Branchu and De la Bernache loops

Nautical access point

Rental centre - Lac-Stukely sector
Rental centre - Lac-Fraser sector

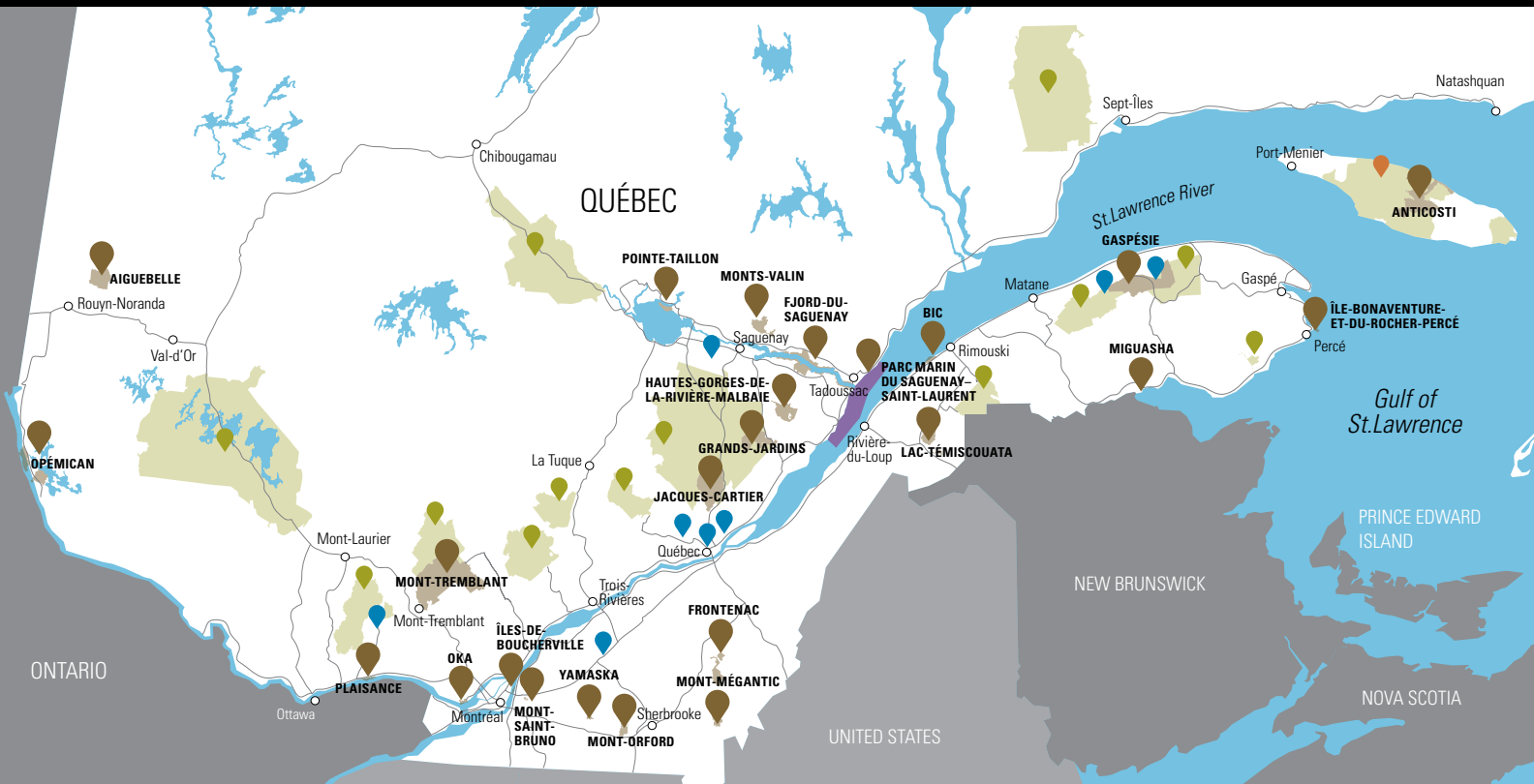
Winter trail

Le Ruisseau-David, Le Ruisseau-des-Chênes
La Boucle du Mont-Chauve

THE LARGEST NATURE AND OUTDOOR NETWORK IN QUÉBEC

Sépaq has the privilege of developing territories of incredible richness. Among them, 24 national parks stand out as unique. These are protected areas that belong to all Quebecers and that provide lasting memories for visitors who proudly make such exceptional destinations their own.

Discover all our destinations at sepaq.com



NATIONAL PARKS |
 WILDLIFE RESERVES |
 TOURIST ESTABLISHMENTS |
 SÉPAQ ANTICOSTI

QUÉBEC NATIONAL PARKS DAY September 7, 2019

FREE ADMISSION

SÉPAQ WINTER DAY JANUARY 25, 2020

FREE ADMISSION



Come and see us at our shop

A number of exclusive products to discover!

Take a little bit of nature home with you when you visit our gift shop. **All profits from the sale of our products are reinvested in Québec's national parks.** A great way to contribute to the protection of our natural heritage!

DISCOVERY TIME



GEOCACHING

What better way to explore a trail than by a modern-day treasure hunt! Geocaching is a new way to discover the park, its history, and natural features. To take part in this activity, you'll need a GPS device or smart phone with a built-in GPS to navigate your way to a geocache. Each geocache is located less than one metre from established park trails and infrastructures.

Our geocaching courses include:

- 80 years of history!
- De la forêt au lac Fraser
- L'érablière
- La Chouette en raquettes (winter course)

GPS DEVICE RENTALS

Where : Le Cerisier Discovery and Visitors Centre, Le Bonnalie Visitors Centre and the Fraser Lake Registration Centre

Rates : \$5/3 hours | \$10/day



Pickerel frog



SELF-GUIDED EXCURSIONS

Étang Fer-de-Lance

A pleasant hike through a maple grove leading to a lookout of Étang Fer-de-Lance pond and the Mont-Orford Massif. You'll find 12 discovery panels along this trail to help you learn more about these fascinating environments!

Aux Cerises Pond ecotour

Grab a canoe and follow the self-guided tour to explore the Aux Cerises pond. Pick up a free guide from the Le Cerisier Discovery and Visitors Centre and follow the numbered buoys in the water. The Aux Cerises pond inspires a sense of calm and relaxation. Distinctive aquatic plants and discreet wildlife (and lots of it!) are yours to discover!

Possibility of renting a canoe or kayak from the Le Cerisier Discovery and Visitors Centre.

Location de canot : \$35.50/4 hours



Stay tuned for our special programs, available at sepaq.com/montorford

QUÉBEC NATIONAL PARKS DAY
September 7, 2019

LA FLAMBÉE DES COULEURS
September 14-15, 21-22, 28-29 and
October 5-6, 12-13-14, 2019



Aux Cerises Pond



Common Snapping Turtle

LET US TAKE YOU AWAY

Share in our park warden’s passion for the territory and its protected natural areas. Whether it’s an evening talk at Le Bonnalie Visitors Centre, stories around the campfire or a guided trip through Stukely Lake’s waters, you’ll enjoy discovering the park’s beauty. Little ones won’t be left out with a range of activities that have been specially designed with them in mind. Consult our program at the different registration centres and on our website at sepaq.com/montorford.

Here’s a taste of some of the activities available to you.



L'ARCANE DES CERISES

Hop onto the **rabaska** and paddle out to the heart of the Aux Cerises Pond valley. Common loons, river otters, snapping turtles and carnivorous plants are just a handful of the species that inhabit the pond. An accompanying park warden will reveal the mysteries of this body of water. Explore the wonders of the pond up-close!

Cost: \$12 / adult
FREE for children ages 17 and under (accompanied by an adult)

Registration required

Minimum age required:
6 years

Registration and payment

Le Cerisier Discovery and Visitors Centre
Le Bonnalie Visitors Centre
Fraser Lake Registration Centre

Reservations: 819-843-9855, ext. 0
Taxes and entry fees not included

SAFARI DE NUIT !

A night hike that delights the senses. Accompanied by a park warden, leave your flashlight behind and enjoy the sensory experiences that the night has to offer. Get ready for a mystery walk!

Cost: \$10 / adult | FREE for children ages 17 and under (accompanied by an adult) **Registration required** | Minimum age required: 6 years

SOS CHAUVÉ-SOURIS

Since the dawn of time, bats have inhabited our nocturnal stories, but do we really know them? These small mammals that fly under the radar are seeing major population declines. Come along with us as we recount the epic tale of these beautiful night creatures.



IMITATION

Are you fascinated by animals and how they get around? Discover this large obstacle course where you can crawl, jump and dig your way through. Parents are welcome!

LES CONTES EN PYJAMA

For children and adults, take advantage of nightfall to slip on your pajamas and listen to stories that come straight from the enchanted forest.





EXPLORE THE PARK BY BIKE

LA CAVALIÈRE NEW!

Finally, you don't have to drive from the Stukely Lake sector to the Fraser Lake sector anymore! Ride your bike from the Le Cerisier Discovery and Visitors Centre to the Opeongo Visitors Centre, an easy 10.6-km trail (one-way) through an enchanting forest.



Martin Pond

TROIS-ÉTANGS LOOP



A beautiful and easy 5.5-km path for the whole family. The trail starts at the Le Cerisier Discovery and Visitors Centre and meanders through several types of forests. Viewpoints also dot the trail at three of the park's ponds: de l'Ours, de la Cuvette and Martin.

LA CASTORIE

A technical trail starting at Le Bonnallie Visitors Centre that will lead you to Castorie Pond (8.5 km round-trip).

LA ROUTE VERTE

A stretch of the Route verte, the vast network of bike paths that criss-cross Quebec, cuts through nearly 7.2 km of the park. Experience is required due to its level of difficulty.

Fatbikes and mountain bikes are available for rent at Le Cerisier Discovery and Visitors Centre, at Le Bonnallie Visitors Centre (Stukely Lake) and at Opeongo Visitors Centre (Fraser Lake).

MOUNTAIN BIKING NEW!

The park now offers 12 kilometres of freshly groomed mountain biking trails.

TRAIL	DISTANCE	DIFFICULTY	STARTING POINT
L'Amiral	3 km	Easy ●	Le Cerisier Discovery and Visitors Centre
Le Vice-Roi	1.9 km	Easy ●	
Le Monarque	0.6 km	Intermediate ■	
La Chanterelle	4.2 km	Easy ●	
L'Amanite	2.4 km	Intermediate ■	



CROSS-COUNTRY SKIING

The Parc national du Mont-Orford cross-country ski trails are second to none! You can choose among thirteen trails totalling 50 km for classic cross-country skiing and 26 km for skate skiing. The trails are marked, groomed and packed to help beginner and advanced skiers find the right trail for them.

When: from mid-December to end of March (based on snow conditions)

Rentals: At the Le Cerisier Discovery and Visitors Centre

Full set of ski equipment for one adult:
\$29.50/day



WATER ACTIVITIES AND EQUIPMENT RENTALS

Parc national du Mont-Orford is proud to offer visitors numerous water activities set in truly magical surroundings. The beaches of Stukely and Fraser lakes are perfect for swimming and boast beautiful water quality, exceptional landscapes, and a variety of activities to choose from. **Canoe, kayak, pedal boat, stand-up paddle and rowboat are available for rent.**

SLEEPING UNDER THE STARS



Spend the night with us and enjoy the park to the fullest. You'll have your base camp and can discover the territory at your leisure all the while having a front-row seat to check out the wildlife in its natural habitat!

Visitors can choose from among several types of accommodations and packages:

- EXP. Cabin
- Nature Cabin
- Hut
- Ready-to-camp
- Camping
- Rustic shelter
- Vélo-camping

BEGINNING OF BOOKINGS 2020 SEASON

Cabin

April 27, 2019 (summer) and
September 17, 2019 (fall/winter)

Hut

May 28, 2019 (summer/fall) and
September 17, 2019 (winter)

Camping and ready-to-camp

May 11, 2019

1 800 665-6527 | sepaq.com

FAMILY FUN IS HERE!



Free! For your children 17 years of age and under

In all seasons, your children can come with you absolutely without charge.

ACCESS TO NATIONAL PARKS

OUTDOOR EQUIPMENT LOAN*

A VAST ARRAY OF ADAPTED ACTIVITIES for the whole family

ACCESSORIES* ON LOAN for young children

*Certain conditions apply.

OUR TOP PICKS

AT PARC NATIONAL DU MONT-ORFORD

- **ImitAction!** A discovery activity for kids.
- The **Étang-Fer-de-Lance** trail is a hike for the whole family, and it's even stroller-friendly!
- The **Trois-Étangs Loop** is an easy 5.5-km bike path.
- Lake Stukely **beach**.

CONSERVE FOR TOMORROW



Eurasian water-milfoil



Please remember to check that your boat is clean and free of plant debris before launching it into the water. This small precautionary measure is important to avoid transporting unwanted plants from one body of water to another.

ALIEN AND INVASIVE!

The introduction and control of exotic invasive species are key issues for the Parc national du Mont-Orford and its periphery. More and more species are found on the territory, with some gaining ground. The park has decided to take action in order to control some of the most aggressive and harmful invasive species.

EURASIAN WATER-MILFOIL

Eurasian water-milfoil is slowly spreading through Stukely Lake. This aquatic plant forms dense grass beds that crowd out indigenous species, choke bodies of water and limit their uses. It was probably introduced into the lake through the launching of boats. The park is working with the *Association pour la protection de l'environnement du lac Stukely* to remedy the situation.

READY...SET...ATTACK!

Did you know that, in 2018, the park had synthetic fabric installed at the lake bottom by a specialized firm? The purpose of the fabric is to smother the Eurasian water milfoil and reduce its invasive area. Desperate times call for desperate measures! The operation will also be carried out this summer at two additional sites.



NAVIGATION CORRIDORS

Until the main colonies of Eurasian water milfoil have all been treated, we've installed buoys in certain bays. These navigation corridors restrict boat traffic of all types through the water milfoil to slow the plant's propagation through fragmentation.



EMERALD ASH BORER!

Oh, no! The emerald ash borer has found its way to the Estrie region! This highly publicized invasive insect from Asia has been wreaking havoc since it arrived in North America in 2002. This critter, transported on firewood and contaminated wood residue, has spread to our doorstep.

At the park, we monitor where the wood comes from that we sell to visitors.

To help protect the park's forests, we ask that you not bring your own firewood into the park.



Canada Goose



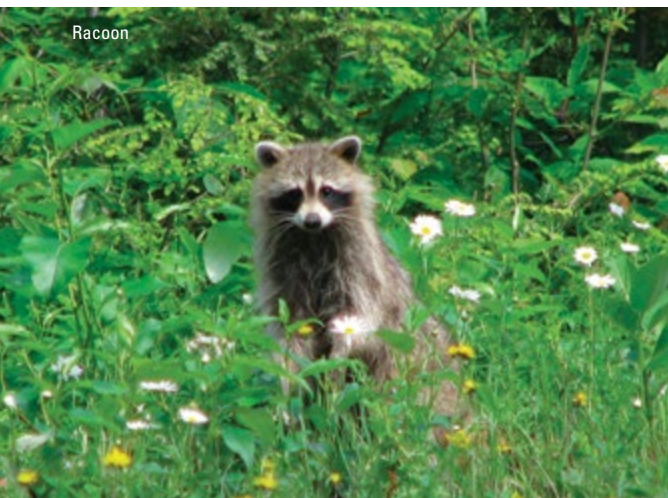
NO SNACKS FOR DUCKS!

To ensure that the beach water at Stukely and Fraser lakes remains clean and suitable for swimming, please do not feed the water birds. Ducks and geese can develop bad habits and lose their fear of humans. When these birds share your swimming area, they leave droppings in the water, which pollutes the lake while increasing the quantity of phosphorus and fecal coliforms in the water. An excellent reason to observe them...from afar!

BEWARE OF SNEAKY RACCOONS!

Raccoons are so cute, but they can be so insufferable! With their beautiful black mask and nimble little fingers, they never pass up an opportunity to steal your snack. To ensure your stay in the company of this wily mammal is a pleasant one, please follow these rules:

- Do not feed animals;
- Store your food in an enclosed space. Raccoons can open various kinds of containers;
- Put away your dirty dishes;
- Dispose of waste and recyclable materials in the designated locations;
- Keep your car windows closed and use the locks from the ready-to-camp's tents.



Raccoon

Did you know that raccoons transfer what they learn to other raccoons? A crafty mother will rush to show her young what she has just discovered. That's the Raccoon School of the Sneaking Arts!

PLAY ^{IT} SAFE



Photo: Steve Deschênes, Parc national des Grands-Jardins

IN THE WILD, YOUR SAFETY IS YOUR RESPONSABILITY

Sépaq's mission is to ensure the widest possible access to Québec's most beautiful natural treasures. Sépaq is committed to the safety of its visitors and urges you to play it safe!

Preparing yourself adequately is the first step in the safe and enjoyable practice of your favourite activities. **YOU ARE RESPONSIBLE FOR YOUR OWN SAFETY** and risk management is an integral part of your experience.

Before leaving for an excursion, **MAKE SURE YOU HAVE THE SKILLS AND ABILITIES REQUIRED** to practice your chosen activity **AND RESPECT YOUR PHYSICAL LIMITS**. Your outing should leave you with nothing but pleasant memories. We invite you to consult our safety guides for Sépaq activities, available at sepaq.com/security. You will also find a list of organizations that can help you plan your activities safely.

sepaq.com/security

CHECKLIST

BEFORE YOU LEAVE HOME

- Plan on going with at least one other person.
- Check the weather report.
- Pack water and food, even if the activity is only for a few hours.
- See that you have appropriate clothing and footwear for anticipated weather conditions.
- Let somebody know the exact location of your destination and the time you plan to return home.

ONCE YOU ARE ON SITE

- Do not rely on your cellphone.
- Check how much time it will take to complete your activity.
- Obey signs and notices, including bans on open fires.

WHEN YOU GET BACK

- Once you have completed your activity, make sure that you report to our staff anything wrong or any damage or problems you encountered.

REMINDERS

- 📄 During your visit to a national park, you must always carry your entry fee receipt or your annual entry card.
- 🚫 Remember that animals are in their natural habitat and that you are a visitor. To ensure both your safety and theirs, feeding them is prohibited; otherwise they may lose their natural fear of human beings and become aggressive.
- 🚫 To preserve our natural riches, you are not allowed to remove any natural elements (animals, plants, dead wood, rocks, etc.). Please also keep to established hiking trails to avoid trampling flora.

IN CASE OF EMERGENCY : 911

SÛRETÉ DU QUÉBEC: 310-4141 (general number) /*4141 (for cellphones)

*Where cellphone networks are available. The costs and expenses incurred in conducting search and rescue operations are the responsibility of the beneficiary. You can obtain protection against these risks from an insurer.

Parc national du Mont-Orford

3321 Chemin du Parc
Canton d'Orford, Québec J1X 7A2
Information: 819-843-9855
Reservations: 1-800-665-6527
sepaq.com/reservation
Email: parc.mont-orford@sepaq.com
sepaq.com/montorford

Legal Deposit: 2019
Bibliothèque et Archives nationales du Québec

Photos: Mireille Blais, Steve Deschênes, Mathieu Dupuis, Claudia Lascelles, Jean-Philippe Genest, Sébastien Larose, Marc Loiselle, Marilyne Marcoux, Jean-François-Martel, Manon Paquette, Jocelyn Praud, Merlin Tuttle.



TCF





presents

in collaboration with
Desjardins

2019 ORFORD MUSIC FESTIVAL

JULY 5TH
TO **AUGUST 17TH**

- ▶ JAZZ & CLASSICAL MUSIC CONCERTS
- ▶ FREE ACTIVITIES
- ▶ FOOD AND WINE EVENTS

Discover Orford Music's Bistro!

Tickets and Reservations: 819 843-3981 | orford.mu



-MONT- ORFORD

GO ALL OUT



» **SEPAQ CAMPERS**
Play for less this summer!

Monday - Thursday

Friday - Sunday
& Holidays

15% discount

10% discount

SEPAQGF19SEM

SEPAQGF19SWE

montorford.com
3074, chemin du
Parc, Orford.
819 843-5688

Book online at Chronogolf and apply the corresponding promotionnal code. Discounts apply on green fee (current rates) and on cart rental only. Upon presentation of a SEPAQ receipt (campsite) when you pay at the Clubhouse. Not valid on promotions.
Holidays : May 20th, June 24th, July 1st, Sept 2nd and Oct 14th 2019.

MAGOG-ORFORD

FLAMBÉE DES COULEURS FALL FESTIVAL

During the weekends of **September 13-14-15, 21-22, 28-29** and **October 5-6, 12-13-14, 2019**

**STOP, ADMIRE,
BREATHE!**

**BETWEEN LAKES AND MOUNTAIN.
SET OFF TO DISCOVER A TRUE
PATCH OF HEAVEN.**

- Downtown Magog
- Municipalité du Canton d'Orford
- Mont-Orford Ski Station
- Marais de la Rivière aux Cerises
- Parc national du Mont-Orford

For more information visit: laflambeedescouleurs.com



**NATURE IS CALLING.
PUT DOWN YOUR
PHONE TO ANSWER.**

