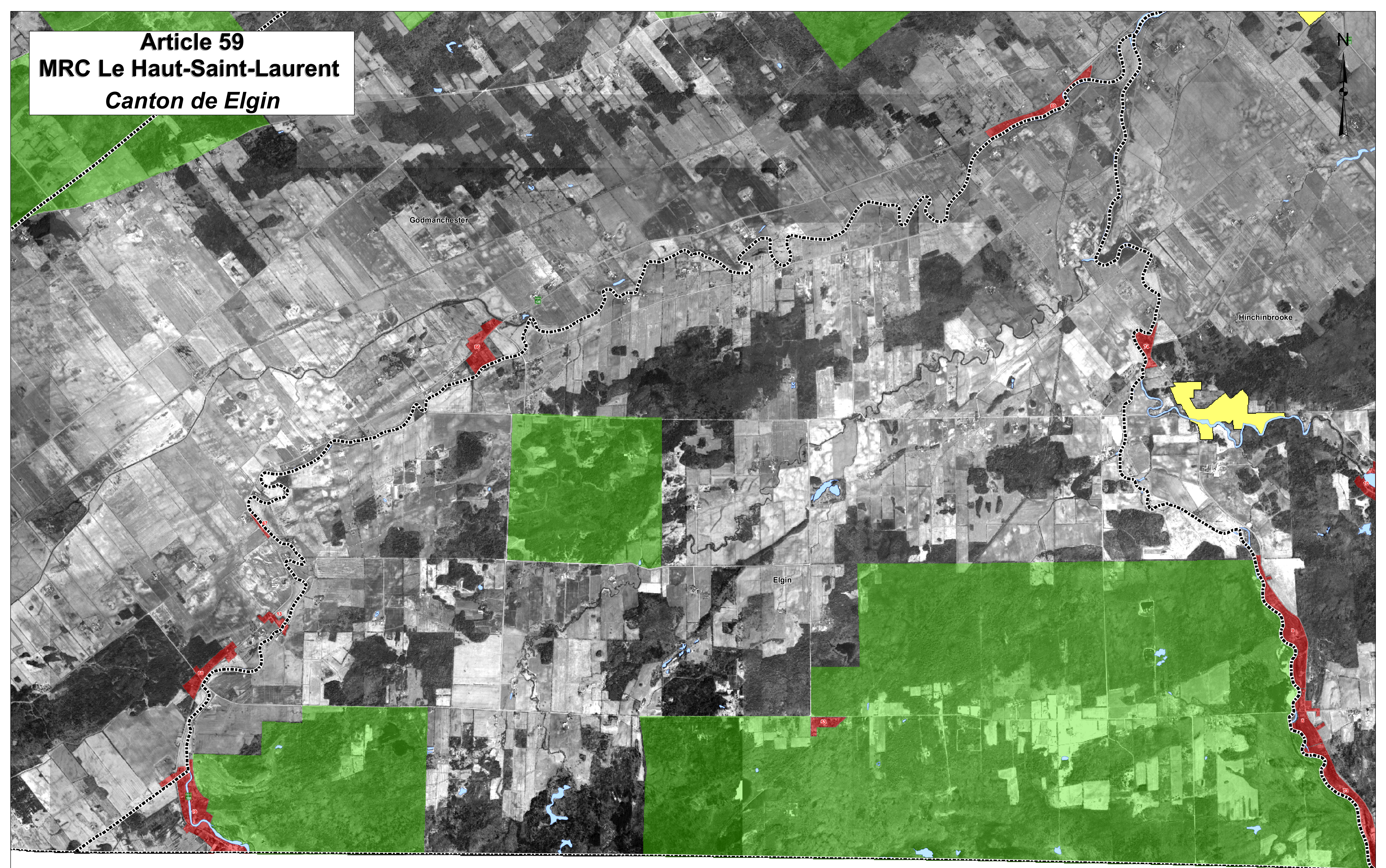



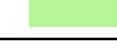
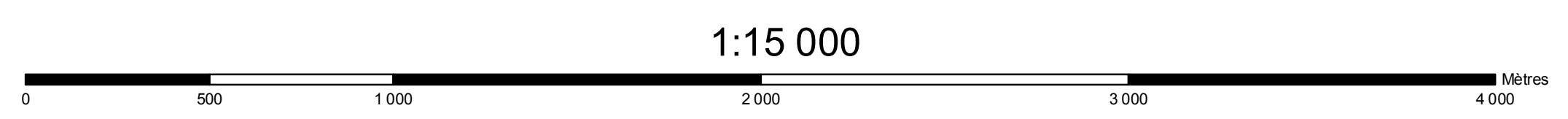


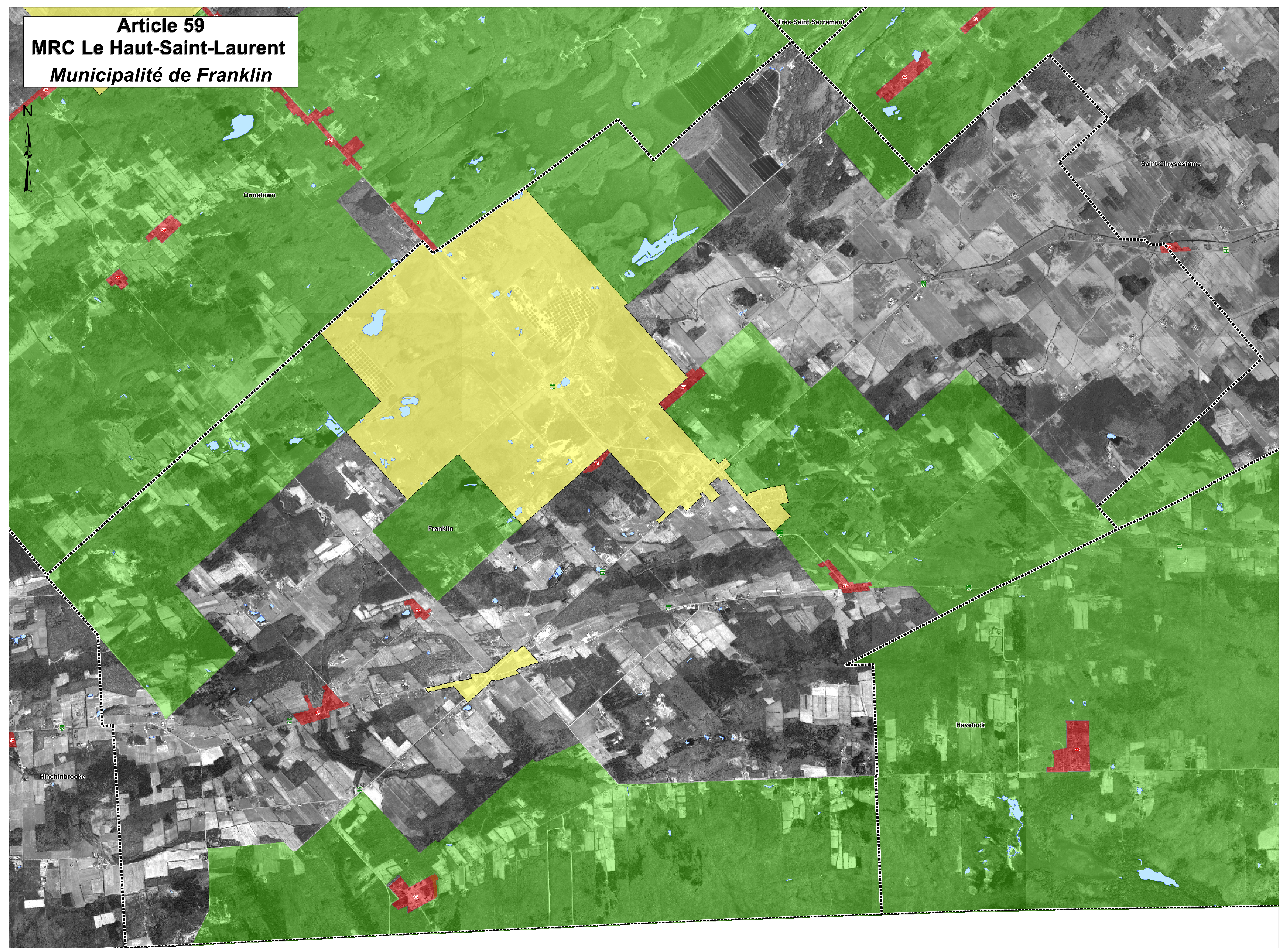
Article 59
MRC Le Haut-Saint-Laurent
Canton de Elgin



 Limites municipales	 Ilots détruits
 Zone non agricole	 Affectation agro-forestière



Article 59
MRC Le Haut-Saint-Laurent
Municipalité de Franklin

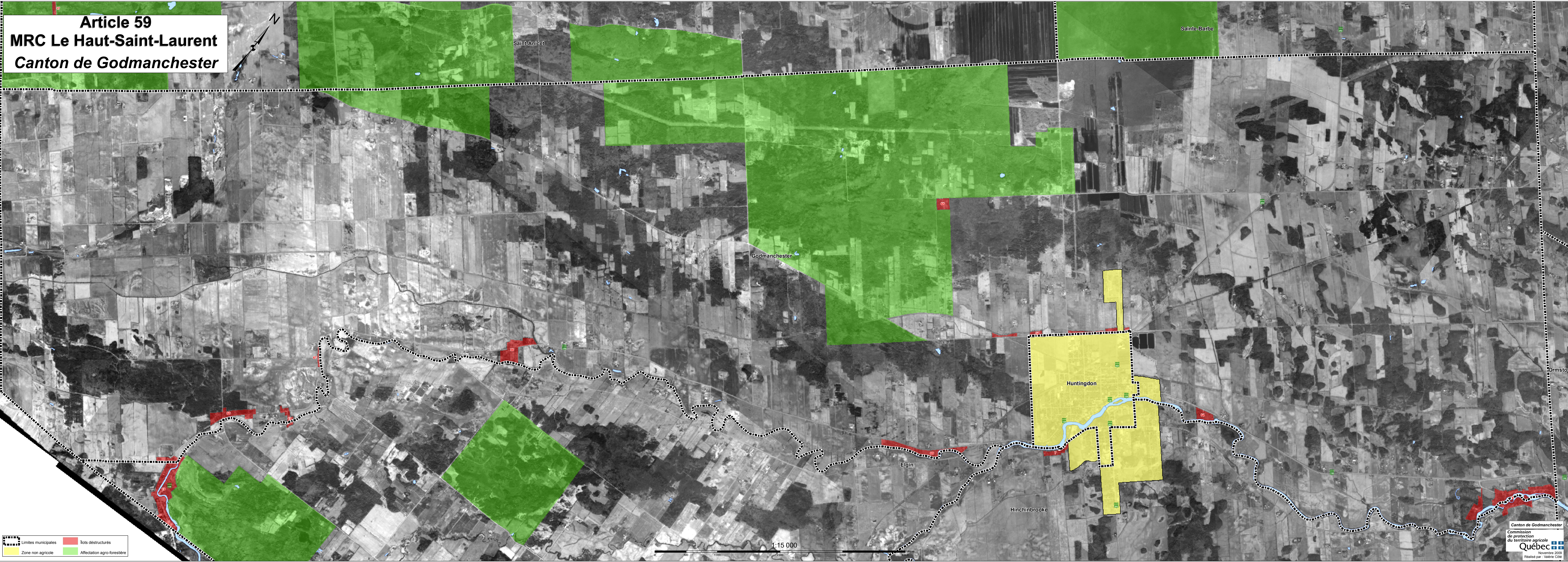
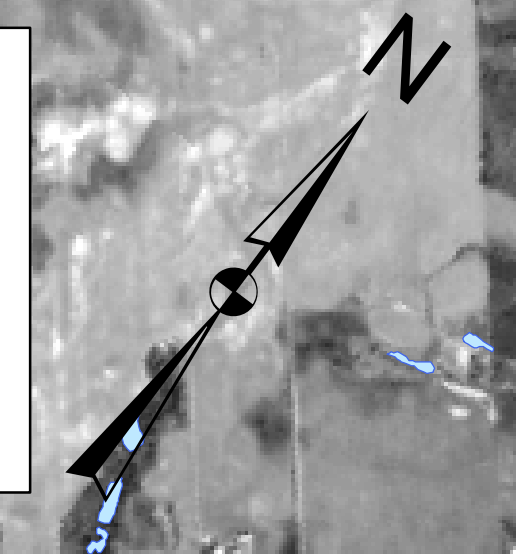


	Limites municipales		Îlots déstructurés
	Zone non agricole		Affectation agro-forestière



1:15 000

Article 59
MRC Le Haut-Saint-Laurent
Canton de Godmanchester



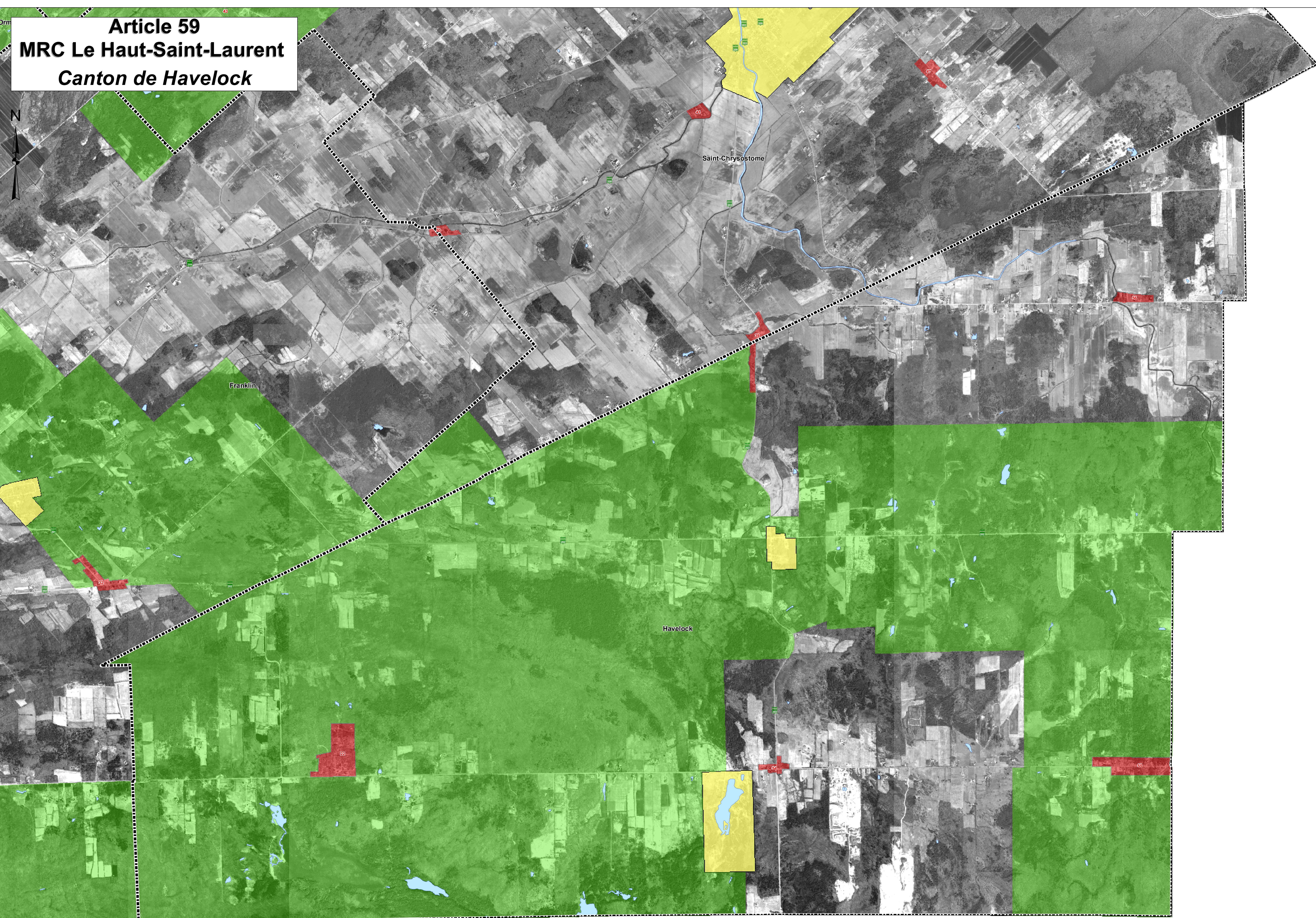
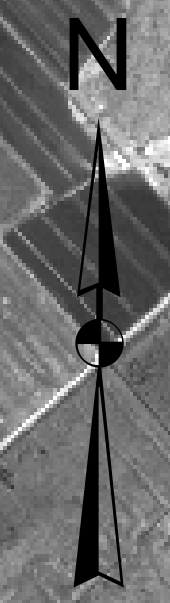
--- Limites municipales
■ Zone non agricole
■ îlots détruits
■ Affectation agro-forestière

1:15 000

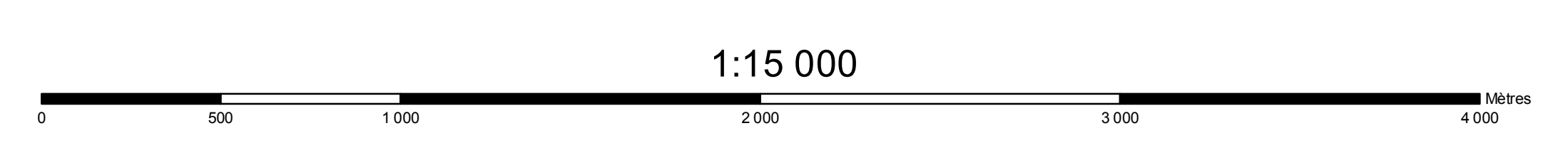
Article 59

MRC Le Haut-Saint-Laurent

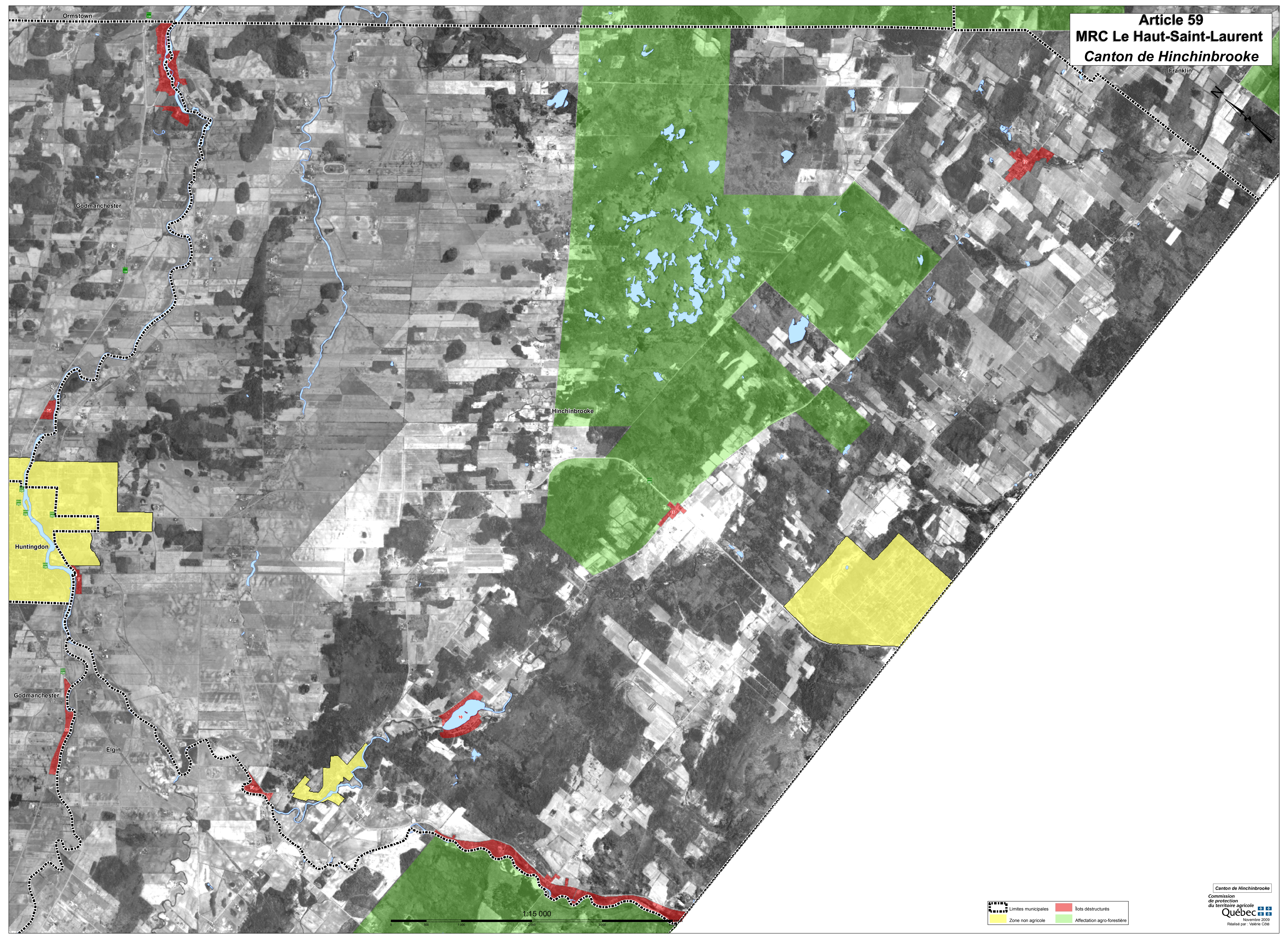
Canton de Havelock


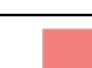




	Limites municipales		Ilots déstructurés
	Zone non agricole		Affectation agro-forestière

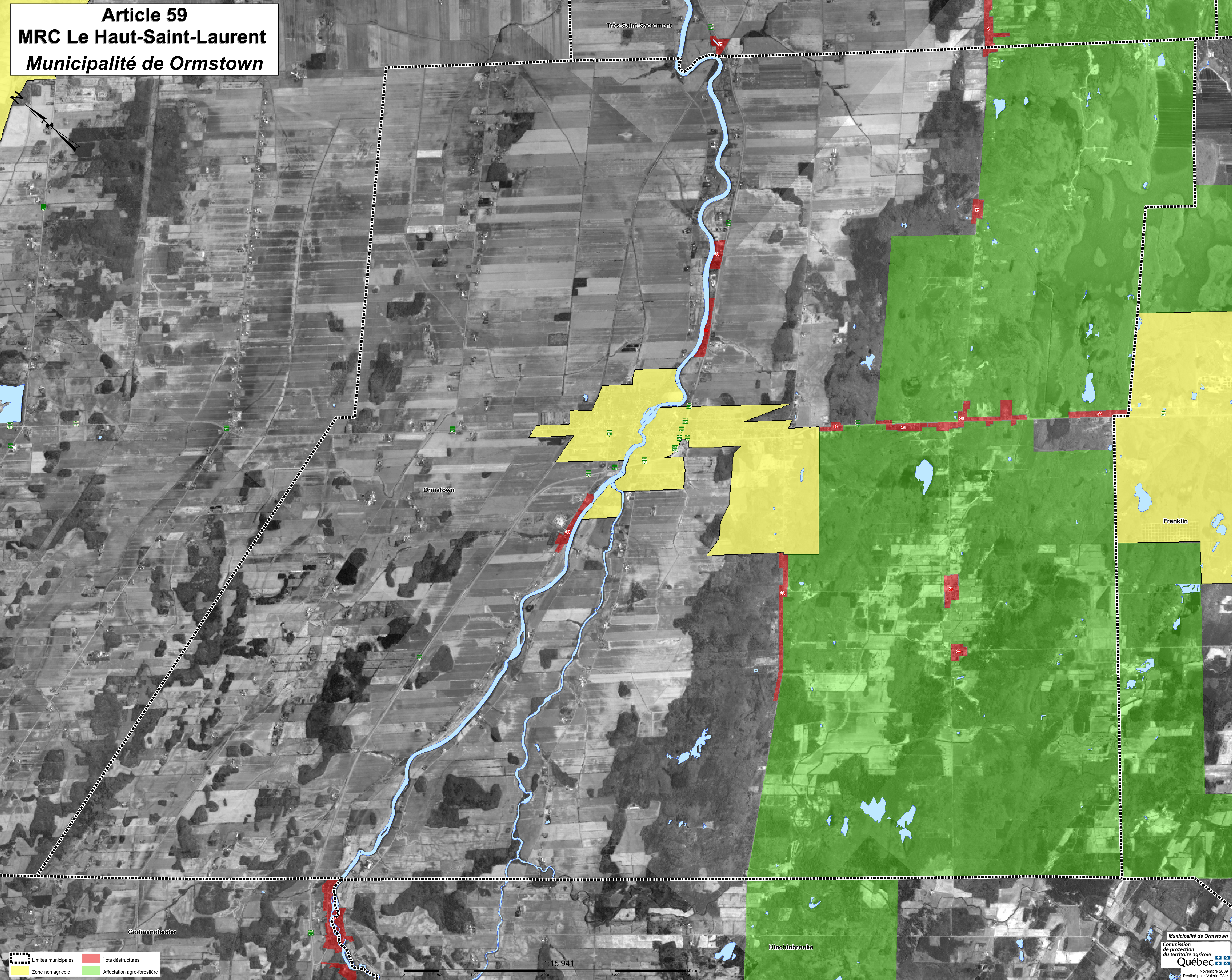
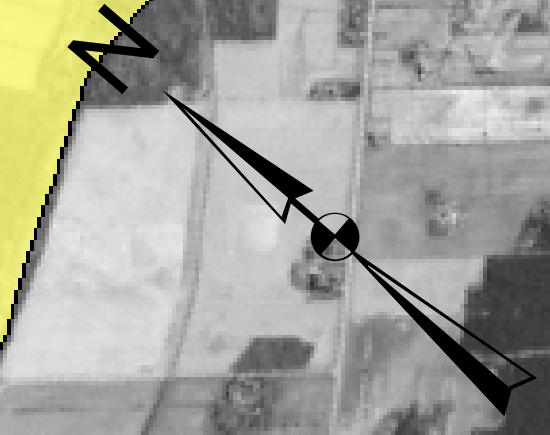


Article 59
MRC Le Haut-Saint-Laurent
Canton de Hinchinbrooke



 Limites municipales	 Îlots déstructurés
 Zone non agricole	 Affectation agro-forestière

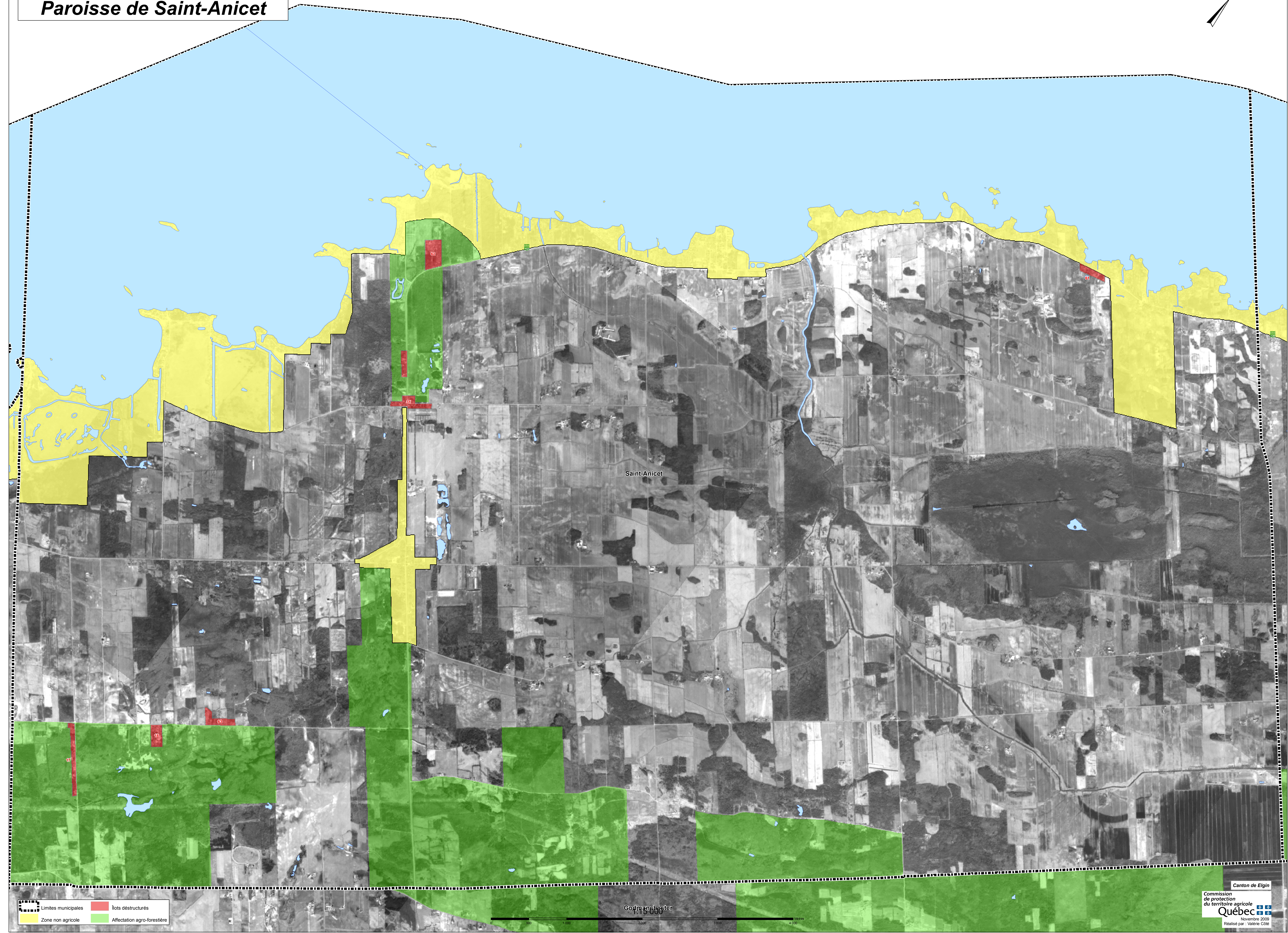
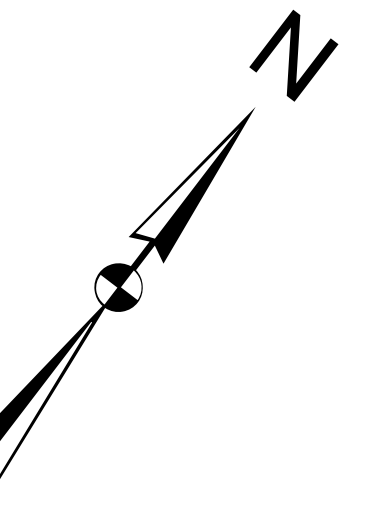
Article 59
MRC Le Haut-Saint-Laurent
Municipalité de Ormstown



--- Limites municipales
--- Zone non agricole
--- Ilots déstructurés
--- Affectation agro-forestière

1:15 941
0 500 1000 2000 3000 MÈTRES

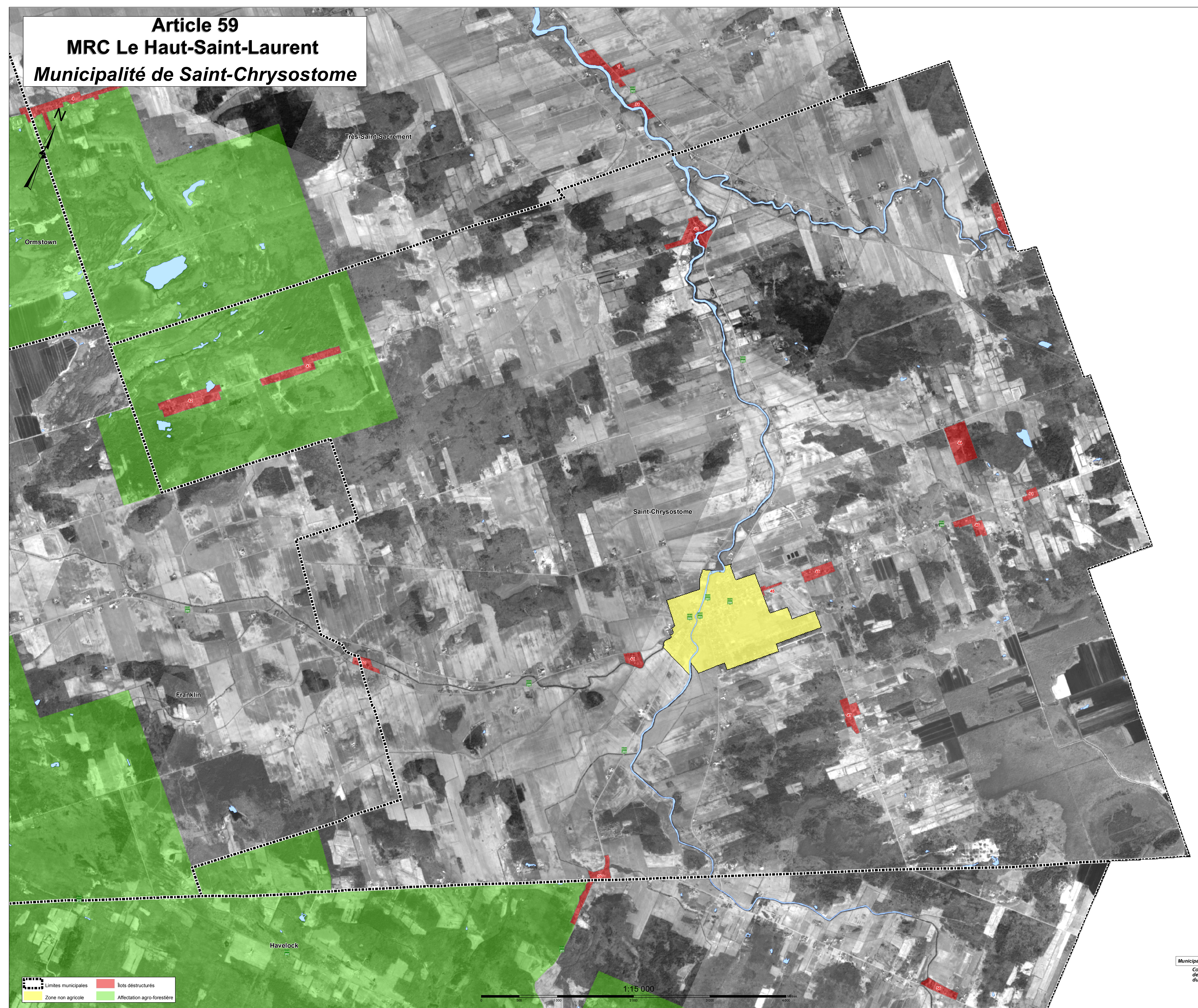
Article 59
MRC Le Haut-Saint-Laurent
Paroisse de Saint-Anicet



	limites municipales		lots déstructurés
	Zone non agricole		Affectation agro-forestière

Geomatics

Article 59
MRC Le Haut-Saint-Laurent
Municipalité de Saint-Chrysostome



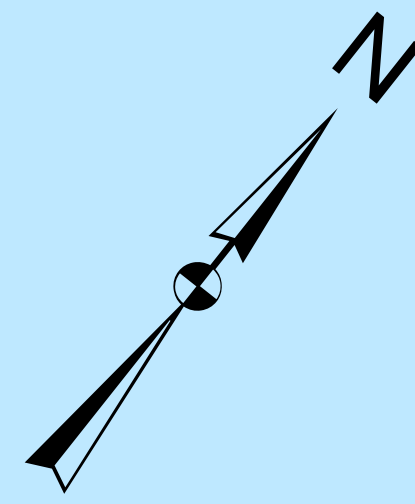
--- Limites municipales
■ ZONE non agricole
■ Ilots détruits
■ Affectation agro-forêtère



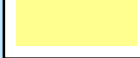

1:15 000

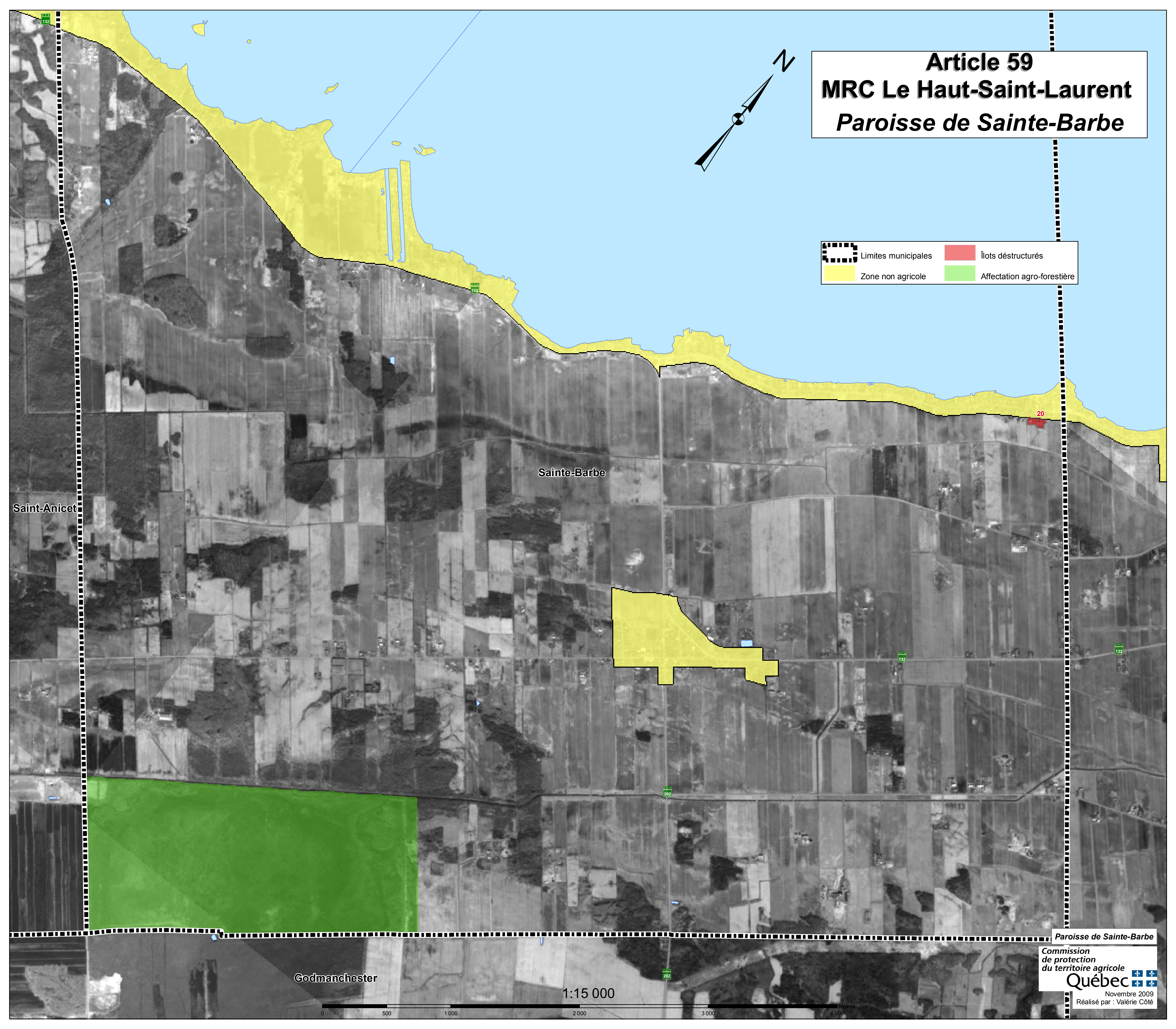
Article 59

MRC Le Haut-Saint-Laurent

Paroisse de Sainte-Barbe



 Limites municipales	 Îlots déstructurés
 Zone non agricole	 Affectation agro-forestière



Sainte-Barbe

Saint-Anicet

Godmanchester

1:15 000

0 500 1000 2000 3000 4000 Mètres

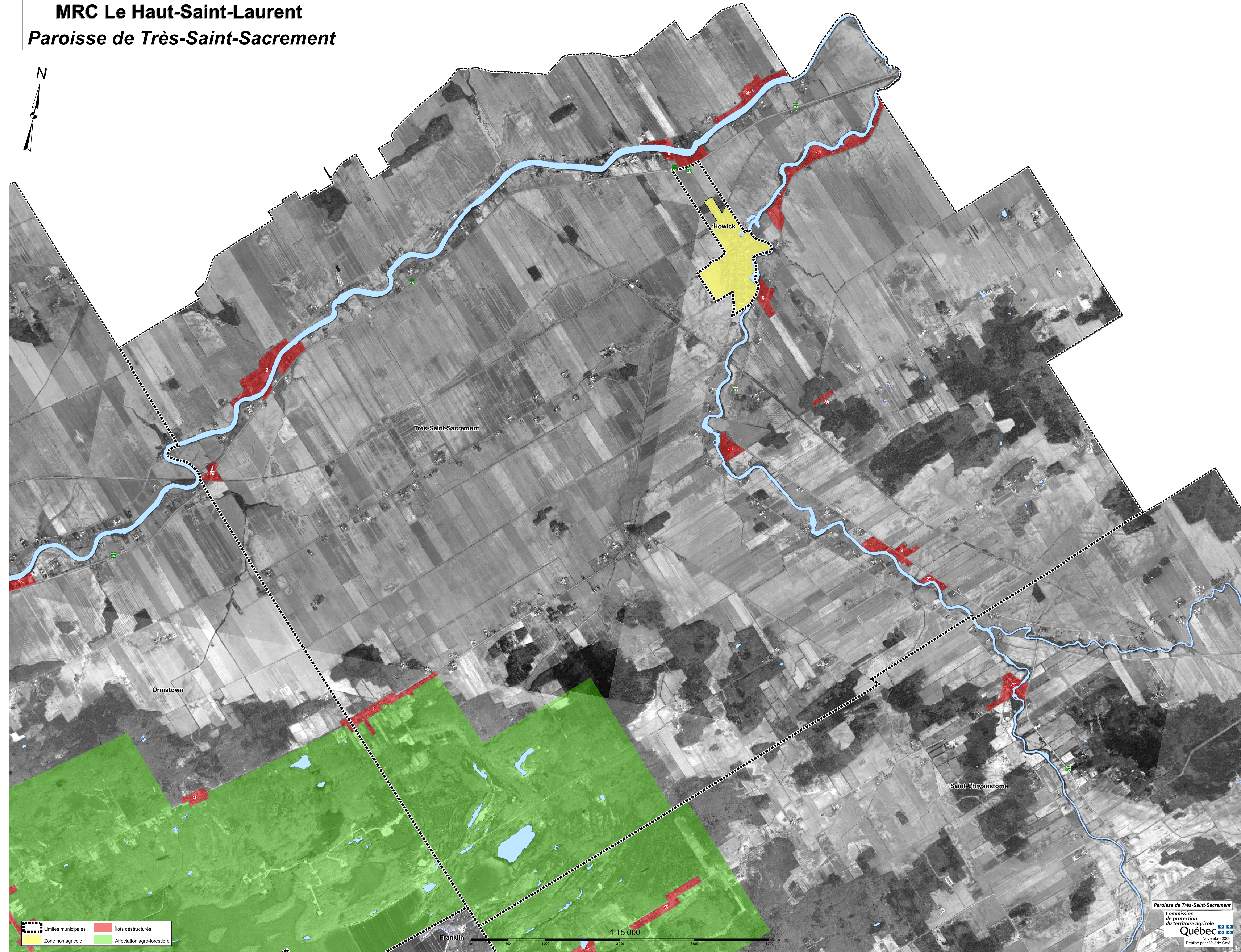
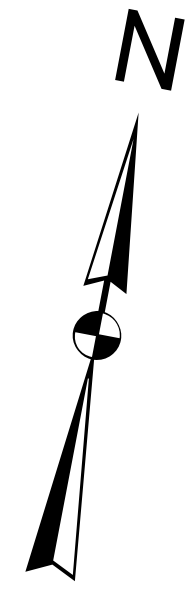
Paroisse de Sainte-Barbe

Commission
de protection
du territoire agricole

Québec

Novembre 2009
Réalisé par : Valérie Côté

Article 59
MRC Le Haut-Saint-Laurent
Paroisse de Très-Saint-Sacrement



--- Limites municipales
■ Zone non agricole
■ lots détruits
■ Affectation agro-forestière

1:15 000