

ANS

- PRIVATE

\$1500

ENCHES TO
VE YOU

TRIAL LOAN
CORPORATION

4932

BLAIKLOCK BROS., LIMITED
*Customs House Brokers
 Cartage and Forwarding Agents*
 STORAGE FREE AND IN BOND
299 to 307 Common Street - Tel. MA 9264*

ACCESSORIES MANUFACTURERS Limited
 OPERATING MONTREAL WIRE WORKS
 CUSTOM MANUFACTURERS OF METAL PRODUCTS
 ENGINEERS ELECTRICAL APPARATUS SHEET METALWORK WIRE WORK
 SCREW MACHINE PRODUCTS TOOL & DIE MAKERS METAL STAMPINGS
 MERCHANDISE DISPLAYS MAGICOAL ELECTRIC FIRES
641 ST. JAMES ST. W. - Tel. PLateau 1741

MUNICIPALITIES IN THE VICINITY OF MONTREAL

FOR NAMES OF RESIDENTS AND GUIDE TO STREETS—SEE STREET AND ALPHABETICAL DIRECTORIES.

MUNICIPALITES AUX ENVIRONS DE MONTREAL

POUR NOMS DE RÉSIDENTS ET GUIDE DES RUES—VOIR ANNUAIRE ALPHABETIQUE ET DES RUES

LACHINE

A City on the St. Lawrence nine miles from Montreal and on the Island of Montreal, county of Jacques-Cartier. It is the summer residence of many Montrealers and one of the most prosperous manufacturing centres of the Province of Quebec. Its works are numerous and thousands of men are employed yearly. Population, 28,042.

CORPORATION OF THE CITY OF LACHINE.

Mayor—Anatole Carignan
Treasurer and Director of Finance—Rene Laberge.
City Clk—Emile Daoust.
Aldermen—Wm. A. Gilbery, Donat Cardinal, J. George Chasse, Albert Stonehouse, Edward H. Connolly and Adrien Trudeau.
Recorder's Court—Paul Carignan C.R., recorder: Emile Deneault, clerk.
Filtration Plant and City Engineer—A J Deslauriers
Health Officer—Dr. G. Valois.
Chief of Police Department—Frank Pitre
Chief of Fire Department—Angus Mickie.
City Assessor's Department—U T Benoit president.

Catholic School Commission—City of Lachine, Rev. Aime Boileau, chairman; Jacques Viau, Robert Hepworth, Eustache Charron, Joseph Fillon, commissioners; Albert St Denis, secretary; Parish of St. Sacrament, Rev. Albert Garipey, chairman; Pierre Cardinal, Henri Picard, Daniel Lefebvre and Leopold Lalonde, commissioners; Emile Daoust, sec-treas.

Protestant School Commission—J Pitcairn, chairman; L. M. Davidson, A. W. Stinson, W. A. Bayne, Kenneth R. Drysdale, K. D. Sheldrick, commissioners; Mrs. V. Dixon, sec-treas.

LONGUEUIL

(Incorporated 1874).

A City situated on the south shore of the St. Lawrence River, county of Chambly. Distant from St. Lambert 8 miles, from Montreal 2 miles from shore to shore, and 6 miles by rail; 6 miles from Boucherville and 10 miles from Chambly. Mail delivered twice a day. Buses operated by the Montreal Tramways Co connect the city with Montreal. Population, 10,117.

CORPORATION OF THE CITY OF LONGUEUIL

Mayor—Paul Pratt.
Aldermen—Clovis Lareau, Alf. J. Doucet, Antonio Lebrun, Lionel Cardinal.
Secretary-Treasurer—J. M. Lacasse.
Assessors' Department—Wilfrid Fleury.
Legal Department—E. Brais, legal adviser.
Police and Fire Department—Jules Brosard, chief.
Public Works—Hector Leclere, director.
Water Works Department—Paul Guin, superintendent.
Recorder—Liguori Hobert, K.C.

COMMITTEES.

Finance—Alf. J. Doucet.
Water Works and Lights—Lionel Cardinal, chairman.
Police, Fire and Health—Clovis Lareau, chairman.
Public Works—Antonio Lebrun.

MONTREAL (CITY OF)

See City of Montreal pages 1000-1001

MONTREAL EAST.

(Incorporated 1910)

Adjoining Mercier ward, City of Montreal, in County of Hochelaga. The most important industries of Montreal East are that of cement, oil refineries and oil-storage tanks, copper refineries and extensive yards of C N R. Bus service operates from George V

and Notre Dame East throughout the town. 9.5 miles distant from Place d'Armes square, Montreal. Population about 4,000.

CORPORATION

Mayor—Napoleon Courtemanche.
Aldermen—Elzear Fournier, Henri Leroux, Adelard Rivet, Edmond Robin and Hormisdas Quintal.
Town Clerk—Joseph Legris
Treasurer—Albert Hetu.
Town Manager—J Ernest Courtemanche.
Chief Accountant—Raoul Chenier.
Town Hall—11370 Notre Dame St.
Assessors' Department—J. N. Langeller, president; Leger Dussault, Charles Bourassa, Charles David, Cyrille Durocher, assessors; J. E. Courtemanche, sec.
Legal Department—Vien and Faribault, legal advisers.
Police and Fire Departments—Liguori Barbier, chief.
Health Department—Dr. D. R. Bisson, medical officer.
Public Works—Raoul Tiernan, foreman
Engineer—Henri Gauthier, I.C.
Building Inspector—J E Courtemanche.
Recorder—Rene Lippe.

COMMITTEES

Finance—Henri Leroux, chairman.
Public Works—Adelard Rivet, chairman.
Police and Fire—Elzear Fournier, chairman.
Public Buildings and Parks—Hormisdas Quintal.
Health—Edmond Robin.

AUDITOR

Victor Pelletier, C.P.A.

MONTREAL SOUTH

A Town on the south shore of the River St. Lawrence adjoining Longueuil and one mile from St. Lambert Station, County of Chambly.

The Montreal & Southern Counties Electric Railway (now operated by the Canadian National Railways) gives the residents a 20-minute service with Montreal via Victoria Bridge, and buses, operated by the Montreal Tramways Co., connect with Montreal via the Jacques Cartier Bridge.

The Jacques Cartier Bridge over the St. Lawrence river ends in the centre of the town.

There are three churches, Catholic, United and Anglican, a Town Hall and two schools. Additional bus services operated by Laval Transport Co. and Chambly Transport Co. with connection to St. Catherine and Papineau Sts., every 20 minutes. Population: 3,000.

MUNICIPAL COUNCIL

Mayor—E. Richer.
Aldermen—A. Southart, A. Lefebvre, C. Lord, O. Cyr, A. Russell, E. Haineault.
Secretary-Treasurer—Y. Saurette.
Police and Fire Chief—W. Prindle.
Recorder—D. Leroux.

School Commissioners of Catholic Board—J. McCready, president; Jos. Cayouette, Alderic Chevalier, Prime Lord, Trefle Brazeau, Clement Patenaude, sec-treas.

School Commissioners of Protestant Board—D. Pollock, chairman, T. Gregson, Chas. J. Harrod, H. T. Palmer, T. V. Battersby, commissioners; Harold B. Lee, sec-treas.

MONTREAL WEST

(Incorporated as a Town, 1897).

This beautiful suburb, in the County of Hochelaga, is easy of access and is in great favor for residential building. Trains connect with the City at almost all hours both by the Canadian Pacific and Canadian National Railways, while the Upper Lachine and Sherbrooke Boulevard roads afford delightful drives. The Montreal Tramways Co cuts through the lower part of the Town affording a 20-minute service with the city, and enters the Town by the Sherbrooke Boulevard with a 6 minute service. There is also a frequent motor bus service between Montreal West and La-

chine, operated by the Montreal Tramways Company. Public and high schools and a post office with postal delivery twice a day. Population about 3,500.

CORPORATION OF MONTREAL WEST

Mayor—G. W. Hodgson.
Secretary-treasurer—Chas. I. Frazer.
Commissioners—F. N. Wiggins, A. S. Runciman, G. H. Brain, G. W. Hodgson.

BOARD OF SCHOOL COMMISSIONERS

Chairman—Mrs. E. A. Leslie.
Commissioners—G. P. Aspinall, Peter Millar, John White, P. W. Wright.

OUTREMONT

(Incorporated in 1875.)

A City situated near the west end of Mount Royal Park, forming part of the parish of Montreal, county of Hochelaga. It is bounded on the east by Laurier and St. Michael wards, on the north by St. John ward and Town of Mount Royal, on the west by Mount Royal ward. Two electric car service routes are provided by the Montreal Tramways Co. (Laurier av., St. Catherine rd. and Bellingham rd. for southern section; Bernard av., Outremont av. and Van Horne av. for northern section). A two and a half and five minute service is provided on each route, also autobus service on Bernard av. and Boulevard Mont Royal (its whole length) to Montreal Tramways terminus. The city contains seven very fine schools four Catholic (College Stanislas, Quebecs Academy, St Germain Academy and LaJolie School) three Protestant (Strathcona Academy, Alfred Joyce and Guy Drummond public schools) and three large convents, a City Hall and the Outremont Curling, Tennis and Bowling Clubs, Municipal Tennis, Shuffleboard Courts, Skating Rinks and Toboggan Slides. A municipal plant lights the city with electricity. It has an ample water supply, a thorough system of drainage, and an efficient police and fire brigade is maintained for the protection of the city. Easy of access from the City of Montreal (centre) no finer suburb can be found. Population, 31,364

CORPORATION OF OUTREMONT

Mayor—Joseph Beaulieu.
Aldermen—Alphonse Belanger, C. E. Eugene Maynard, T. H. Cooper, Romuald Bourque, Owen J. Callary, S. A. Acres, Hon. Senator E. Beaugard, K.C., John S. Astbury, M.A., L.L.D. and A. Deschamps, C.E., O.B.E.
City Solicitor—Hon. C. P. Beaulieu, K.C.
City Auditors—Sharp, Milne & Co.
City Clerk and Treasurer—Ernest T. Sumpson, F.I.M.T.A.
City Engineer and Manager—Emile Lacroix, B.A.Sc.
Building Inspector—Emile Lacroix, B.A.Sc.
Chief of Police—J. Griffith.
Chief of Fire—Z. Sautoire.
Medical Health Officer—E. R. Dufresne, M.D.
Recorder—Rene Lippe.

ST. LAMBERT.

A City on the south shore of the St. Lawrence, directly opposite Montreal two miles from the centre of the city, in the county of Chambly, district of Montreal. The electric car service is operated by the M. & S. C. Ry. There is also an excellent train service by the Canadian National Railways. The Jacques-Cartier Bridge over the St. Lawrence to the South Shore is only a short distance from the limits of St. Lambert. Population, 7,700

MUNICIPAL COUNCIL

Mayor—C. A. Comeau.
Aldermen—N. H. Simms, H. S. Robinson, Miss G. Emard, J. L. Townshend, H. S. Martel, J. C. Gilbert, C. F. Potter, sec-treas.
Manager—M. J. Rutledge, B.Sc.
Chief of Police—J. R. MacDonald.

Supt. of Water Works—A. Le Royer.
Recorder—Aug. Angers, K.C.
Board of Health—Mayor and Aldermen.
Medical Health Official—J. R. Oulton, M.D.
Chief Assessor—R. G. Heughan.
Food Inspector—R. M. Levert, V.S.
Catholic School Board—Roma Gravel, pres.;
 Phyllis Baillargeon, sec.; Marcel Huet,
 syndic; Armand Bourgault.
St. Lambert Board of School Commissioners
 —J. W. Morrison, chairman; C. J. Green,
 W. R. Watt, R. L. Harrison, C. E. Ric-
 ketts, H. B. Lee, sec-treas.
Chambly County Protestant School Board
 —C. C. Ricketts, chairman; E. B. Duke,
 J. R. Beattie, A. E. Steels, J. A. Reilley,
 H. B. Lee, sec-treas.

TOWN OF HAMPSTEAD

A Town adjoining Notre Dame de
 Grace ward of the City of Montreal, from
 which it is separated on the south by Cote
 St. Luke Road, and on the east by Mac-
 donald av. Hampstead begins five blocks
 west of Snowdon Junction along Queen
 Mary Road which leads directly into the
 Town.

Hampstead is a beautifully laid out gar-
 den Town, and has very rigid building
 restrictions. Population about 2,900.

CORPORATION OF THE TOWN OF HAMPSTEAD.

Mayor—Lyman I. Playfair.
Aldermen—H. J. Leitch, R. H. Chadwick,
 A. E. Pierce, D. F. Planche and J. C.
 Kenkel.
Board of School Commissioners—E. B.
 Plant, chairman; Dr. R. S. Jane, Mrs.
 Marion Byers, R. H. Chadwick and H. Mil-
 ler.
Manager—K. G. Cameron.
Sec-Treas.—C. G. Leavitt.
Chief of Police—Arthur Harris
Recorder—G. R. W. Owen.

TOWN OF MOUNT ROYAL THE MODEL CITY

Eight minutes from the heart of Mont-
 real via the electrically-operated Tunnel of
 the Canadian National Railways, lying on
 the northwest slope of Mount Royal and
 adjoining the cities of Montreal and
 Outremont.

The Town is conveniently reached by
 automobile from Outremont by following
 St. Catherine road to Rockland avenue,
 crossing the Canadian Pacific Railway
 tracks. The Town of Mount Royal's
 territory commences at this point. To
 the westward it can be reached by
 Cote des Neiges rd which is the con-
 tinuation of Guy street.

Montreal Tramway buses (corner Queen
 Mary rd. and Cote des Neiges) cross the
 Town of Mount Royal to Park av. and
 Jean Talon with a ten-minute service.

Education—For Protestant and Catholic
 School purposes the territory of the Town
 of Mount Royal has been created into a
 separate school district. The School Com-
 missioners have built a fire-proof two-
 story and basement school, built of brick
 and re-inforced concrete where elementary
 and high school grades are taught. A new
 fireproof school has been built to accom-
 modate the first four grades. The classes
 are conducted by teachers of high scholastic
 degree. The Catholic education is taken
 care of by a new Catholic school, modern
 in every detail. Population about 8,300.
 School enrolment for both schools 1,200
 pupils.

CORPORATION

Mayor—R. E. Schofield.
Aldermen—E. B. Julien, F. J. King, E.
 E. Lanthier, E. T. Moore, C. T. Russell.
Manager—W. R. J. MacNeill.
Sec-Treasurer—D. W. Lough.
Engineer—A. M. Hamilton.
Police Dept.—George Elliott, chief.
**Board of Protestant School Commission-
 ers**—H. F. Finnermore, chairman; Mrs. R.
 C. Dickinson, J. F. Close, R. C. Flitton,
 J. H. Miller, commissioners; Mrs. W. P.
 Hodges, sec-treas.
**Board of Catholic School Commission-
 ers**—Alme Lacroix, chairman; Dr. W. J.
 Lafave, L. Julien, Louis Desjardins, S. J.
 Charbon, commissioners; Adrien Perault,
 sec-treas.
Town Office 90 Roosevelt av. Town of
 Mount Royal.

VERDUN

The City of Verdun is ideally located at
 the south-western limits of Montreal on the
 banks of the St. Lawrence River, which is
 about 8 miles wide at this point. The mun-
 icipality was incorporated as a village under
 the name of Riviere St. Pierre in 1874,
 changed to the Village of Verdun in 1876.

erected into a Town in 1907 and a City in
 1912. Since 1901 its population has increased
 from 1898 to 75,450. Possessing few
 large industries it is mostly composed
 of homes and stores. Its famous
 boardwalk is now being replaced by a
 modern asphalt promenade, brilliantly light-
 ed, along the entire three-mile river front,
 and banked with attractive lawns and
 shrubbery. Municipal tennis courts, a bow-
 ling green, a yacht club and a motor boat
 club are also situated here. In addition a
 very modern Municipal Auditorium and Hoc-
 key Arena seating 4,500, and a municipal
 natatorium consisting of two magnificent
 open air swimming pools are located on
 the river front.

Great success has been achieved in the
 building of homes under the National
 Housing Act, the City offering suitable lots
 for sale at very low prices. On this plan a
 small model village is being constructed.

Educational facilities are excellent, with
 thirteen Catholic and eight Protestant
 schools and three commercial colleges.
 There are two hospitals and nineteen
 churches. Public services such as health,
 police, fire, water and electricity are of
 the best. The City Council gives special
 attention to providing and supervising play-
 grounds for children, and the Municipal
 Playground Commission operates all sports
 on the numerous playing fields.

A comprehensive juvenile library is also
 operated by the City.

The form of civil government consists of
 a mayor and eight aldermen elected every
 three years. The City Manager System has
 been in force since 1938. Population 75,450.

CORPORATION.

City Hall—475 Church avenue.
Mayor—Edward Wilson.
Aldermen—R. Jeanneau, H. L. Poirier,
 J. Lareault, P. E. Joannette, J. A. Souliere,
 J. J. Lennon, A. Rolland and T. A. B. Wil-
 cox.
**General Manager, Director of Finance and
 Treasurer**—J. R. French.
City Clerk—A. J. Burgess.
City Engineer—Henry Hadley, C. E.
Asst. to City Engineer and Supt. of Roads
 —J. C. Brosseau.
Superintendent of Works—A. Lefort.
Director of Police—Pierre Gatinet
Director of Fire—Raoul Prolix.
Municipal Playgrounds Commission—Ald.
 T. A. B. Wilcox, chairman.
Medical Health Officer—A. D. Archam-
 baut, M. D.
Chief Food Inspector—Dr. Geo. Etienne.
Legal Advisor—Francis Fauteux, K.C.
Asst. Legal Advisor—Yves Leduc.
Recorder—E. Desjarlais, K.C.
Auditor—L. D. Viau, C.A.

VILLE LaSALLE

A Town on the North Shore of the River
 St. Lawrence, situated between Verdun and
 the City of Lachine, directly connect-
 ed with Montreal West and Ville St Pierre
 on the north, in Jacques Cartier County.

The Town Hall is located at No. 13
 Strathyre av. Council meets on second
 Wednesday of each month. Fire and police
 departments are located at 8745 La Salle
 Blvd., Ville La Salle. The C. P. R., N. Y. C.
 and Delaware & Hudson R. R. Co., supply
 service. "La Salle" being the name of the
 Railway Station. Population, 7,404.

CORPORATION OF THE TOWN OF LASALLE

Mayor—J. Anatole Leroux.
Aldermen—Albert W. Stinson, B. T. Cle-
 ment, Albert Bolvin, Welle Larente,
 Lionel Bannon and Alf. Lefebvre.
Secretary-Treasurer—Alb Gravel.
Engineer—Athanasie Latour.
Chief of Police and Fire—Daniel Demers
Health Dept.—Maurice Lacharite, M.D.
Recorder—Jacques Belque

VILLE ST. LAURENT

A thriving Town and parish in Jacques
 Cartier County on the island of
 Montreal and on the C.N.R., 4 miles
 from Montreal. The Montreal Tram-
 ways Co. runs electric car and bus
 service between here and Montreal at
 8-minute intervals day and night. Popu-
 lation about 11,000.

CORPORATION

Mayor—Edouard Gohler.
Town Manager and Clerk—Lucien Tou-
 pin, C.A.
Treasurer—David Rochon.
Assistant-Treasurer—Robert Valade.
Suprintendent—R. Lecavaller.
Town Engineer—Marcel Huot.
Aldermen—East Ward, L. C. Harris, J.
 Frs. Belanger, Roland Mantha; West Ward,
 Paul-Emile Laperriere, Maurice Cousineau,
 J. Henry Petit.

VILLE ST. PIERRE

The Town is situated on the north side
 of the Lachine Canal, between the City of
 Lachine and the Town of Montreal West,
 in Jacques Cartier County, being traversed
 by the C.N.Ry and the C.P.Ry., and having
 a twenty-minute service to the heart of the
 City of Montreal by the Montreal Tram-
 ways Co. Population, 4,796.

CORPORATION

Mayor—C. A. Kirkland, M.D., M.P.P.
Aldermen—Joseph Laurendeau, Donat
 Boyer, Lucien Rochon, Richard Scott, G.
 Towstak, J. E. Fournier.
Sec-Treas.—F. H. Malo.
Asst. Sec-Treas.—Miss C. Gadoury.
School Commissioners—Donat Boyer, pres-
 ident, councillors: Joseph Laurendeau,
 Victor Paul, Lucien Rochon, Conrad Pi-
 card; H. F. Malo, sec-treas., Com Sch.
Fire & Police Chief—Eugene Lavallee.

WESTMOUNT

The City of Westmount is beautifully
 situated on the western slope of Mount
 Royal, and from the upper level a magni-
 ficent view of the St. Lawrence River, Lake
 St. Louis and surrounding country is ob-
 tained. The city is almost exclusively
 residential and may be designated a "city
 of homes." The city is governed by a
 mayor and five aldermen, elected for a
 term of two years by the city at large. The
 city manager form of government has been
 in vogue for 35 years, and the city's pro-
 gress is evidence of the wisdom of the
 adoption of this system of government.

The city owns and operates in a very
 efficient manner an electric light and power
 plant and garbage destructor plant.

Park and playground spaces owned by
 the city cover an area of about 119 acres
 equal to 12 per cent of the total area of
 the city.

Many municipal tennis courts are in
 great demand during the summer months
 and every facility is given for the enjoyment
 of winter sports.

The Westmount Athletic Grounds on St.
 Catherine Street, containing an area of 7.8
 acres, are being reconditioned after their
 use by the Army.

The city owns a free public library. Dur-
 ing the year 184,078 volumes were circu-
 lated for home use.

The Victoria Hall as a community centre
 is continually in use for church, charitable,
 educational, fraternal, municipal, political
 and social activities.

Public education is provided by the
 school commissioners of Westmount and the
 school commission of St. Leon de West-
 mount. In addition there are a number of
 private schools.

The city is supplied with filtered water
 and a 98 per cent efficiency is required.
 The water is regularly tested to assure that
 a maximum of purity is maintained. Popu-
 lation about 26,779.

CORPORATION.

City Hall—Sherbrooke W. cor Argyle av
Mayor—R. P. Adams.
Aldermen—W. S. Greene, commissioner
 of finance; W. F. MacKlaier, K.C., com-
 missioner of roads and municipal buildings;
 G. L. Fowler, commissioners of electric
 light and power, health and public welfare;
 J. S. Cameron, commissioners of police and
 fire; J. Senecal, K.C., commissioner of
 parks.
City Clerk & Treasurer's Dept—C. W.
 Houston, secretary-treasurer; A. W. D.
 Swan, assistant secretary-treasurer; A. R.
 Bourdon, city accountant; J. W. Weldon,
 K.C., city solicitor; Riddell, Stead, Graham
 and Hutchison, C.A., Auditors.

Board of Assessors—J. Colin Kemp,
 chairman; Donald Baillie and A. S.
 Rutherford.

General Manager & City Engineer—P. E.
 Jarman.

Asst. General Manager—Thos. J. Hughes.
Roads Dept—P. G. Delgado, supt of
 Public Works

Electric Light Dept—E. P. Brown, supt.
Police Dept—R. A. Byford, chief.

Recorder's Court—Chas. A. Hale, K.C.,
 recorder; A. E. Laverty, deputy.

Fire Dept—W. C. Cobb, chief.

Health Dept—Dr. J. J. Day, medical
 health officer.

Parks and Playgrounds—E. J. Anderson,
 superintendent.
Library—Miss Kathleen Jenkins,
 librarian; Miss Margaret Good, reference
 librarian; Miss R. G. McEwen, children's
 librarian.

Library Trustees—A. M. McMaster, W. B.
 Scott and Mrs. Grant Reid.

CORBELL-HOOKE, INC.
 LEATHERS - MILLBOARDS
 FOR BOOKBINDING
 HANDICRAFT SUPPLIES
 C.I.L. Distributors
 BOOKCLOTHS and FABRIKIDS
 CURS, CARTONS-TOILES
 POUR RELIURE
 FURNITURES pour ARTISANAT
 TOILES PX et FABRIKIDS
 de Canadian Industries
 431 ST. JAMES STREET WEST Telephone PL. 9451

BUYERS

For

Sterilized Wiping
 Cloths
 Cotton and Wool
 Waste
 Oiled and Rubber
 Clothing
 Plumbers Spun
 Oakum
 Navy and Dry
 Oakum
 Jute Packing
 Cotton and Jute
 Twines
 Hard Fibre Twines
 Rope and Sashcord
 Gummed Tape
 Cotton Duck
 Flags and Bunting

Write
 or
 Phone

**PROVINCIAL
 COTTON & FIBRE
 CO. LTD.
 MONTREAL
 Tel. MA. 6152**

WHY ADVERTISING IN LOVELL'S MONTREAL DIRECTORY PAYS

YOU men who spend large amounts of money on creative advertising—who when you think of advertising, think *ONLY* of creative advertising—
A word with you.

When you invest a dollar you protect that dollar to the utmost.

What are you doing to protect the money you invest in creative advertising?

The morning paper that lies before you on your breakfast table has in it an advertisement that cost you many dollars. This same paper has the day of the month printed at the top of each page, twice on each sheet; where everyone can easily read it.

You saw the date.

But when you reached the office, sat down at your desk, and wanted the day of the month, YOU REFERRED TO YOUR CALENDAR, and a dozen times that day you referred to your calendar. Your employees did the same. The whole business world did likewise.

Why?

The public will see your creative advertisement.

But when they want your goods — THEY WILL TURN TO LOVELL'S MONTREAL BUSINESS DIRECTORY AT THE END OF THIS BOOK— just as you turned to your calendar.

Protect that money you are putting into creative advertising.

Protect it with REFERENCE advertising in LOVELL'S MONTREAL DIRECTORY.

A small percentage of the amount you spend for creative advertising WILL DO IT.

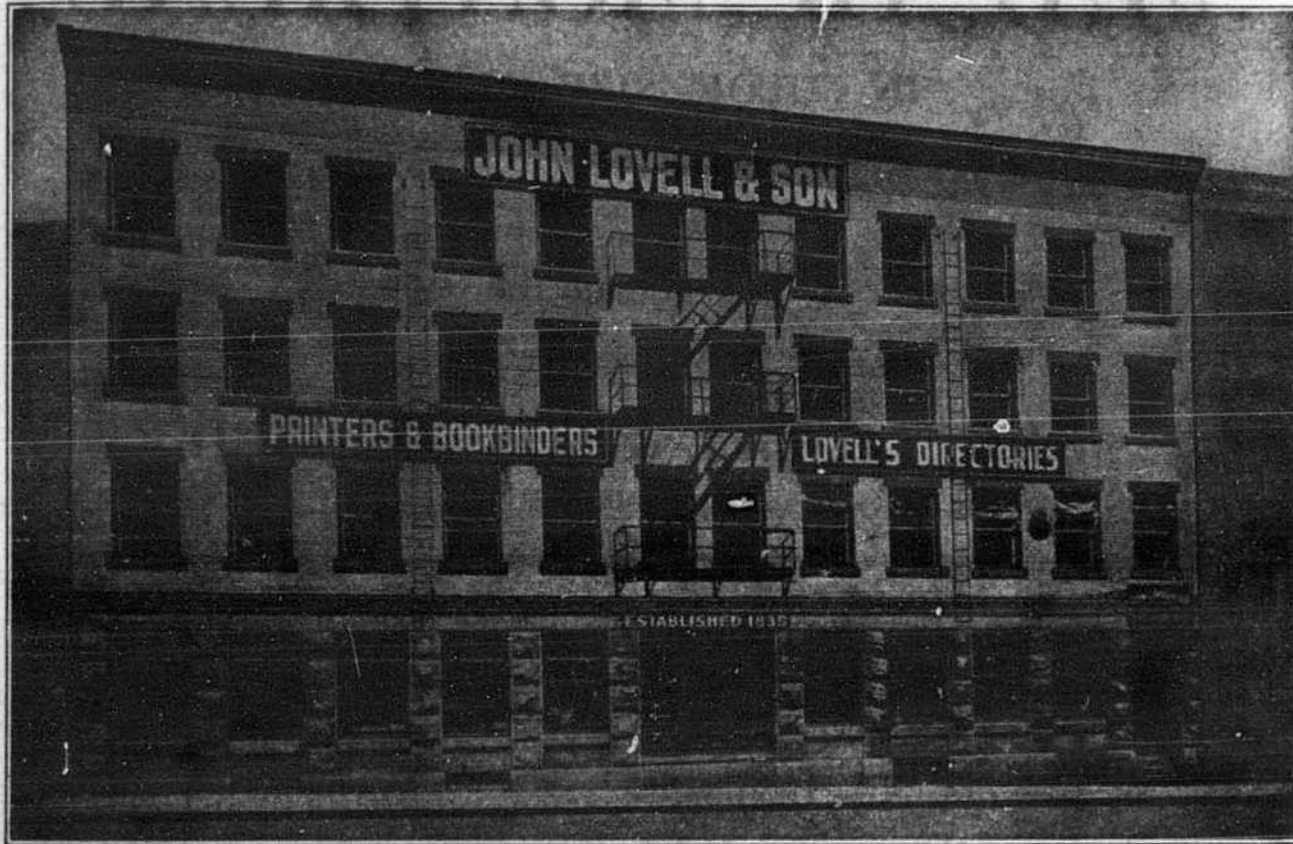
LET US TALK IT OVER WITH YOU

Call our Advertising Department

Phone MARquette *2321

JOHN LOVELL & SON LIMITED

ESTABLISHED 1835



Publishers-Printers-Bookbinders

CATALOGUES, PRICE LISTS, MAGAZINES, FOLDERS,
BOOKLETS, REPORTS, FINANCIAL, RAILWAY,
STEAMSHIP, COMMERCIAL & INSURANCE WORK

TELEPHONE

Marquette 2321

423-429 ST. NICHOLAS STREET, MONTREAL

LOVELL'S MAP OF MONTREAL

IN COLOR—SIZE 48" x 36"

Parks and Playgrounds. Prominent Buildings, Clubs, etc., shown.
Also Railway and Street Car Lines and intersecting
street numbers on main thoroughfares.

PUBLISHED BY

JOHN LOVELL & SON, LIMITED

ESTABLISHED 1835

THIS MAP covers Montreal from Bout de l'Isle northwest to and including Ahuntsic, Cartierville and Ville St. Laurent, and west to and including Lachine, Ville St. Pierre and Montreal West. In addition to the City of Montreal the following places are shown: — Westmount, Verdun, Outremont, Montreal West, Montreal East, Lachine, Ville St. Pierre, Cote St. Luc, Ville St. Laurent, Ville La Salle, Town of Hampstead, Town of Mount Royal, Laval de Montreal (Bout de l'Isle), Pointe aux Trembles, Montreal North, Ville St. Michel, St. Leonard de Port Maurice.

Price \$1.00 per copy, folded, on paper

PLUS SALES TAX

Copies may be obtained mounted on wallboard or linen with rollers.

Complete Index, in book form, of Streets, etc., supplied with
each Map.

5798

LOANS

CK — PRIVATE

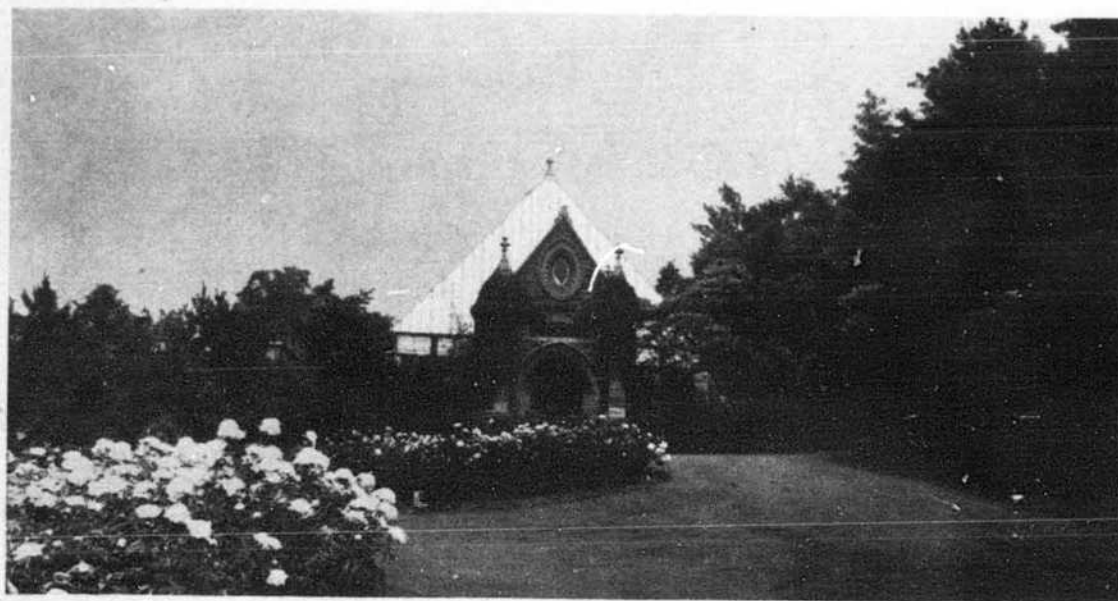
to \$1500

**RANCHES TO
SERVE YOU**

**INDUSTRIAL LOAN
FINANCE CORPORATION**

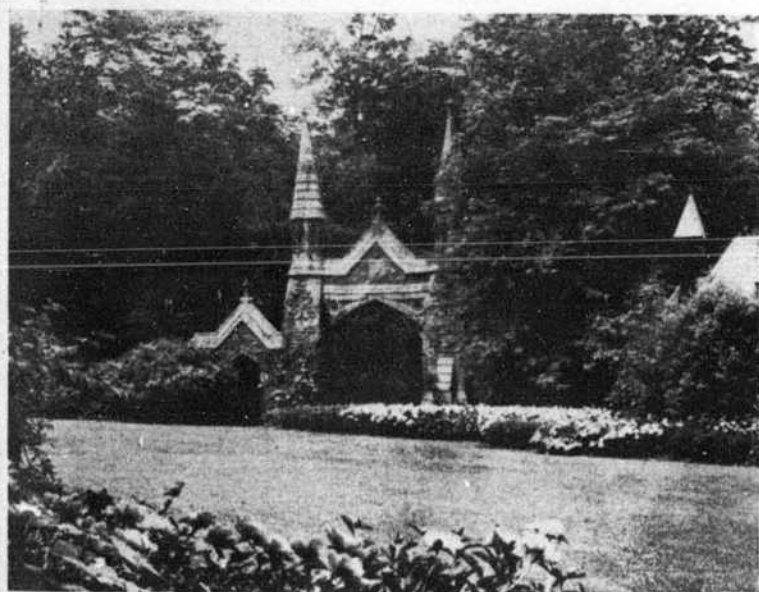
4932

Ample Cemetery Space for Another 100 Years



Crematory—Mount Royal Cemetery, First Crematorium in Canada

**NON-PROFIT—ALL REVENUES ARE USED FOR OPERATION, DEVELOPMENT
AND MAINTENANCE**



Main Entrance — Mount Royal Cemetery

**The Trustees Give Their Services
Without Remuneration**

**No Commission paid to any Undertaker
or Monument Dealer**



Waiting Room — Hawthorn-Dale Cemetery

Mount Royal Cemetery Company

1207 Drummond Street, Montreal 25 - Phone MARquette 8059

Office Hours (Except on Legal Holidays)	{	MONDAY to FRIDAY: 9.00 a.m. to 12.00 Noon
		1.30 p.m. to 5.00 p.m.
		SATURDAYS: 9.00 a.m. to 12.00 Noon

TRUE TO THE HIGHEST TRADITIONS OF FINE, PAPERMAKING



**SUPERFINE LINEN
RECORD**

Canada's finest bond paper, owes its time-defying strength and beauty to its 100% new rag content. Yet it costs but a fraction of a cent more per letter than the cheapest bond. Your printer, lithographer or engraver will be pleased to produce your stationery on this superfine Rolland paper.

IN the family of papers which bear the "R" Shield watermark are types for every business purpose. Some, like Superfine Linen Record, are supreme examples of the papermaking craft; others are "service" papers for routine tasks.

But all are true to the Rolland tradition—all meet the most critical tests of their fitness to fulfill their appointed purpose in their appointed price class.

ROLLAND PAPER

COMPANY LIMITED

High Grade Paper Makers since 1882
MONTREAL, QUE.



BRANCH OFFICE: TORONTO, ONT. • MILLS AT ST. JEROME, QUE. AND MONT ROLLAND, QUE.