

POTUS

OR BEHIND EVERY GREAT DUMBASS
ARE SEVEN WOMEN TRYING
TO KEEP HIM ALIVE

THE CAST



KAYLEIGH CHOINIÈRE
Dusty



RACHAEL CRAWFORD
Margaret



CATHERINE FITCH
Stephanie



ELVIRA KURT
Bernadette



CHERISSA RICHARDS
Chris



ASTRID VAN WIÈREN
Harriet



JENNIFER VILLAVERDE
Jean

THE RUNNING TIME IS 2 HOURS WITH A 15 MINUTE INTERMISSION

The Segal Theatre is a member of the Professional Association of Canadian Theatres and engages, under the terms of the Canadian Theatre Agreement, professional artists who are members of Canadian Actors' Equity Association.

The videotaping or other video or audio recording of this production is strictly prohibited.

"POTUS" is presented by arrangement with Concord Theatricals on behalf of Samuel French, Inc.
www.concordtheatricals.com



SEGAL CENTRE

THEATRE SEASON 2024-2025 SAISON THÉÂTRALE

DISCOVER OUR MOST MUSICAL SEASON YET
AT SEGALCENTRE.ORG!

SUBSCRIBE TODAY!



A #\$\$@!% GOOD TIME!



POTUS

OR BEHIND EVERY GREAT DUMBASS
ARE SEVEN WOMEN TRYING
TO KEEP HIM ALIVE

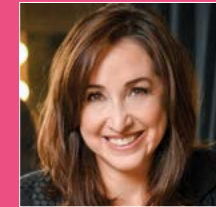
BY SELINA FILLINGER
DIRECTED BY LISA RUBIN

May 12
- June 2
2024

POTUS

OR BEHIND EVERY GREAT DUMBASS
ARE SEVEN WOMEN TRYING
TO KEEP HIM ALIVE

CREATIVE TEAM



LISA RUBIN
Director



EO SHARP
Set Designer



LOUISE BOURRET
Costume Designer



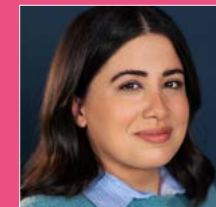
CHRISTIAN THOMAS
Sound & Music Composer



SONOYO NISHIKAWA
Lighting Designer



ALYSSA ANGELUCCI-WALL
Assistant to the Director



LEILA GHAEMI
Creative Consultant



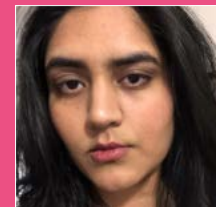
RACHELLE GLAIT
Casting



TREVOR BARRETTE
Stage Manager



AVA BISHOP
Assistant Stage Manager



RAVEENA AMBANI
Apprentice Stage Manager



CARA REBECCA
Fight and Intimacy Director



Never in a million years did I imagine that as we produced this play, both Canada and the U.S. would be experiencing such “drama” in their respective “White Houses”, nor could I have anticipated the events of October 7 and their profound impact.

But here we are—with a play that captures the zeitgeist and turns it on its head, embodying the audacity and spirit of contemporary theatre. In times of challenge

and reflection, laughter can be a powerful salve, offering a momentary respite and a way to process our experiences. *POTUS* comes at a time when this blend of humor and insight is most needed, serving as both a mirror and a balm.

This is more than a farce; it boldly reimagines power dynamics and places women at the forefront in a world that often sidelines their voices. As Selina Fillinger notes, these characters are “fast, fierce, and fucking hilarious,” presenting strength and influence alongside their flaws and relatability. This portrayal offers a celebration of authenticity, reminding us of the importance of being true to oneself. The dramatic moxie portrayed by our incredible cast reflects a seldom-seen reality on the political stage, making *POTUS* a groundbreaking piece in modern theatre.

As we launch our new season—promising one showstopper after another—*POTUS* sets the tone for a series of daring and diverse productions. Your support is more crucial than ever, enabling us to bring these vital stories to the stage and continue our tradition of artistic excellence.

Thank you for your continued support. I hope you find joy and a sense of connection in our work, just as much as we found in creating it.

LISA RUBIN
Artistic and Executive Director



**SCAN HERE TO HELP
THE SEGAL CENTRE THRIVE!**

WE'RE TRYING SOMETHING NEW!

SCAN HERE TO SEE OUR FULL DIGITAL PROGRAM ONLINE



**NETWORK: SEGAL CENTRE PUBLIC WIFI
PASSWORD: BIG DEAL**

PRESENTED WITH THE GENEROUS SUPPORT OF
BARBARA SEAL, C.M.

EMERGING ARTISTS GENEROUSLY SUPPORTED BY
**THE JONATHAN AND SUSAN WENER
FAMILY FOUNDATION**



SAVE SOME TIME, SKIP THE LINE!
Pre-order your intermission drinks before the show!

BOARD OF DIRECTORS

Sylvy Plante - President, Elliot Lifson O.C. - Immediate Past President,
Howard Stotland - Vice President, Moe Liebman - Secretary, Brandon Gerstein - Treasurer, Aliénor Armand-Linot, Myer Bick, Maia Cooper, Ellen David, Rabbi Lisa Grushcow, Lindsay Holmgren, Ranelee Lee, Michel Ohayon, Shawn Rozansky, Emmelle Segal

LEADERSHIP COUNCIL

Joel Segal, Barbara Seal C.M., Robert Kleinman, Kathy Assayag, Adam Barza,
Françoise Bertrand, O.C., O.Q., Irwin Cotler, P.C., O.C., Joel King, Tony Loffreda, Monette Malewski, Andy Nulman, Jesse Prupas, Allan Quallenberg, William Rosenberg,
Michael Rubinoff, Allan Sandler, Jeff Segel, Gail Small, Jacob Tierney

ARTISTIC AND EXECUTIVE DIRECTOR Lisa Rubin
GENERAL MANAGER Jon Rondeau

ADMINISTRATION

DIRECTOR, FINANCE & OPERATIONS Barry Taggart
FINANCE & OPERATIONS Brian Karanofsky
ARTISTIC & EXECUTIVE ASSOCIATE Gabriela Saltiel
JEWISH PROGRAMS MANAGER Sivan Slapak
PRODUCTION ACCOUNTANT Jez Yung
FACILITIES MANAGER Jacques-Olivier Dupuis
HEAD OF MAINTENANCE Louis Fredette
OFFICE COORDINATOR Jacqueline Mirador

COMMUNICATIONS

HEAD OF COMMUNICATIONS Mélanie Thompson
HEAD OF MARKETING Laurie Bourgeois
MARKETING & DESIGN SPECIALIST Julie Nyst
HEAD OF BOX OFFICE AND SALES Jean-Marc LeBlanc
SALES, MARKETING, & COMMUNICATIONS SPECIALISTS Liora Friedland, Charlie Morin
SOCIAL MEDIA MANAGER Casey Marie Ecker
OUTREACH & SALES SPECIALIST Carrie Mazoff
ASSISTANT BOX OFFICE MANAGER Steve Côté
BOX OFFICE & SALES ASSOCIATE Jesse Fildes
SALES & CUSTOMER SERVICE ASSOCIATES James Beaver, Adam Capriolo, Amanda Silveira
FRONT OF HOUSE MANAGER Angela J. Murphy
HOSPITALITY COORDINATOR Mahin Sekendra

ACADEMY

DIRECTOR OF THE ACADEMY Liana Wiener

DEVELOPMENT

DIRECTOR OF DEVELOPMENT Alexandra Yanofsky
DEVELOPMENT OFFICER Stephanie McKenna

CREATIVE TEAM

DIRECTOR Lisa Rubin
SET DESIGNER Eo Sharp
COSTUME DESIGNER Louise Bourret
LIGHTING DESIGNER Sonoyo Nishikawa
SOUND & MUSIC COMPOSER Christian Thomas
ASSISTANT TO THE DIRECTOR Alyssa Angelucci-Wall
CREATIVE CONSULTANT Leila Ghaemi
CASTING Rachelle Glait
STAGE MANAGER Trevor Barrette
ASSISTANT STAGE MANAGER Ava Bishop
APPRENTICE STAGE MANAGER Raveena Ambani
FIGHT AND INTIMACY DIRECTOR Cara Rebecca

PRODUCTION & PRESENTATION

DIRECTOR OF PRODUCTION Marc Laliberté
TECHNICAL DIRECTOR Sylvin Sévigny
TECHNICAL DIRECTOR, PRODUCTION François Lemieux
SEASON PRODUCER Luciana Burcheri

ASSOCIATE PRODUCTION MANAGER Mike Carvalho
ASSOCIATE PRODUCER Kasia Leskiewicz
ASSOCIATE PRODUCER, CONTRACTS & SPECIAL PROJECTS Paul Brian Imperial
ASSOCIATE PRODUCER, CONTRACTS & SPECIAL PROJECTS Sean Sandler
COMPANY MANAGER & RENTALS COORDINATOR Stephen Maclean Rogers
HEAD TECHNICIAN, THEATRE & HEAD OF LIGHTING Chris Wardell
ASSOCIATE HEAD TECHNICIAN & HEAD OF LIGHTING Miles Keily-Baxter
HEAD TECHNICIAN, STUDIO & COORDINATOR Natalie Demmon
ASSISTANT TECHNICAL DIRECTOR Adam Walters
ASSISTANT LIGHTING DESIGNER Julie Laroche
ASSISTANT SOUND DESIGNER / HEAD OF SOUND Evan Brown
SESSION GUITARIST Frédéric Maher
AUDIO MIX AND RECORDING Octoma studio
ASSISTANTS TO THE SET DESIGNER Roy Ghattas, Mayumi Ide-Bergeron, Zoe Roux
HEAD CARPENTER Stephen Schön
ASSOCIATE CARPENTERS Joseph Baron, Alycia O'Keefe, Yesha West
CARPENTERS Charlotte Baker, Gordon Barnett, Evan Ellison, Catherine Sargent,
..... Hailey Verbonac, Zach Weibel
HEAD SCENIC PAINTER William Patrick
ASSOCIATE PAINTERS Mary Hayes, Camille Picher
HEAD OF PROPS Fruzsina Lanyi
PROPS ASSOCIATE Sabrina Miller
PROPS TECHNICIAN Véronique Marcoux
HEAD OF WARDROBE Louise Bourret
HEAD DRESSER Rachel Quintero Faia
COSTUME CONSULTANT Courtney Moses Orbin
COSTUME ASSISTANT Julia Carrier
WIGS Perruques & Co., Sarah Tremblay
HAIR STYLIST Betty Annan, Mario Gilbert
MAKEUP STYLIST Eve Monnier, Suzanne Trépanier
COSTUME WORKSHOP AND ALTERATIONS Marcel Roman
WARDROBE COORDINATOR Elisabeth de Medeiros
CASTING Rachelle Glait
VOCAL COACH Liz Koch
FIGHT CAPTAIN Cherissa Richards
MUSIC COACH Jonathan Patterson

SET-UP AND STRIKE CREW

Sabrina Balliana, Gordon Barnett, Elsa di Paola, Evan Elison, Louis Fredette
Sarah Pattloch, MacKenzie Poole, Catherine Sargent, Nathan Taylor, Jared Wonago

HOUSE DOCTORS

Dr. Beth-Ann Cummings, Dr. Mark Karanofsky,
Dr. Michel Samra, and Dr. Jonathan Young

SPECIAL THANKS

Sarah Deshaies at CJAD, Andrew Carter & James Foster for their vocal stylings,
ShowTex Canada, Raphaël Brien inc., Yanick Jutras chez Électro-Pod, Peerless Clothing

ORIGINALLY PRODUCED ON BROADWAY BY

SEAVIEW 51 ENTERTAINMENT GLASS HALF FULL LEVEL FORWARD SALMAN AL-RASHID RUNYONLAND
PRODUCTIONS SONY MUSIC MASTERWORKS ONE COMMUNITY JAY ALIX AND UNA JACKMAN
JONATHAN DEMAR IMAGINE EQUAL ENTERTAINMENT LUCAS KATLER DAVID J. LYNCH
LEONID MAKARON MARK GORDON PICTURES LIZ SLAGER TED SNOWDON NALIE
GORMAN/TISH BRENNAN THROOP AND THE SHUBERT ORGANIZATION
MARK SHACKET, EXECUTIVE PRODUCER