

SÉPAQ

PARC NATIONAL DE L'ÎLE-BONAVENTURE- ET-DU-ROCHER-PERCÉ

Protected area. Enriching nature experiences.

Bonaventure Island, home to the most accessible Northern Gannet colony in the world. You can see it up close, from a boat or on a hike!


Sépaq



Service area
Île-Bonaventure Sector

Resto des Margaulx

3,3 km to get to the wharf to Percé

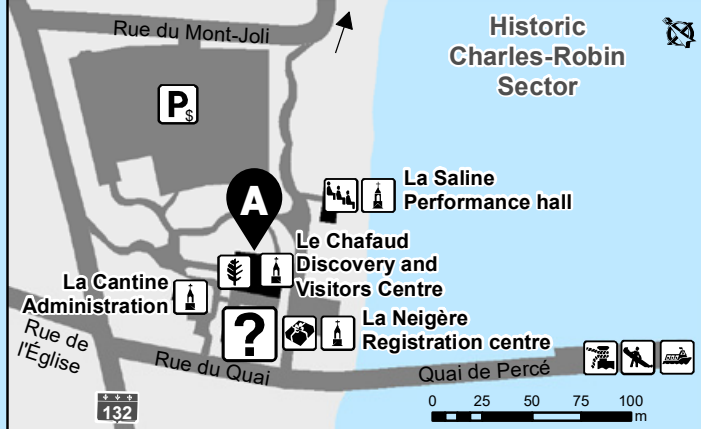
CAUTION
IT'S JUST TOO DANGEROUS!
 Walking alongside Percé Rock and Mont Joli is extremely dangerous. Several tons of debris fall from the rock and Mont Joli every year, during every season.



Cette carte intègre de l'information géographique de source gouvernementale. Pour des besoins de représentation, certaines données ont subi des transformations et des adaptations qui ont pu modifier la donnée originale. Données originales utilisées : Années 2020 Banque de données Sépaq Cartes topographiques à l'échelle de 1/20 000 2001 Équidistance des courbes de niveau : 10 mètres Source des données utilisées : Ministère de l'Énergie et des Ressources naturelles © Gouvernement du Québec

L'information fournie sur cette carte peut changer sans préavis. En cas de disparité, l'information sur le terrain doit prévaloir en tout temps.

Registration centre / Information	Lookout	Toilet
Boutique Nature shop	Wharf	Scree area
Historical building	Hiking	Road network
Cruise	Migratory bird refuge	Trail
Nature interpretation	Food services	Km / Length of trail sections
Boat launch	Performance hall	National park boundary
Picnic area	Parking lot	Marine sector
Telephone		



DISCOVER OUR TRAILS ON ÎLE BONAVENTURE*		Distance and duration		Round trip	Difficulty	Elev. change (m)
	Les Mousses - This narrow, unobtrusive trail winds through moss- and lichen-covered slopes before reaching the cliffs, offering magnificent views of the sea and the edge of the continent stretching in the distance.	7 km	2.5 hr	X	I	120
	Les Colonies - This trail is the easiest and most direct route to the famous gannet colony.	5.6 km	1.5 hr	X	I	135
	Le Paget - Follow the same forest trail as the Pagets used in the olden days! Follow in the footsteps of this family of islanders to learn more about their history while enjoying the natural environment.	7.4 km	2 hr	X	I	90
	Le chemin du Roy - Simply breathtaking! This trail leads alternately through forests and meadows with completely restored ancestral homes, always surrounded by magnificent landscapes.	9.4 km	3 hr	X	I	75

The park entry fee is NOT included in the price of boat trips to the island, which are provided by private companies.
 Before leaving for the island, stop in at La Neigère, our visitor building on Rue du Quai, to pay your park entry fees and plan your visit!



The Rally of Privateer Duval



Privateer Duval attacked enemy ships to defend both his country and his King. His privateer ship «Vulture» captured ship after ship, spreading terror off the shores of France. At some point, Duval became weary of his navigator life, so he settled down definitly on Bonaventure Island. He died a few years later, leaving behind him numerous descendants.

Gossips tell that Privateer Duval would have brought a treasure with him and that it would be hidden somewhere on Bonaventure Island.

Let's get going and search out for Duval's treasure! All along the way, you will have to solve few riddles. With chance, they will lead you to Duval's treasure, and who knows, maybe a much more beautiful treasure is awaiting you up there!

Instructions

- Answers all the questions below, getting clues from the service area and all along the Colony Trail.
- Have fun and discover a gorgeous island!

The arriving Area

- 1** Remember two instructions given to you upon arrival on the island.

- 2** Name two employees of the park.

- 3** On Bonaventure Island, there are _____ (number) walking trails. Name each one...

The Maison LeBoutillier

- 4** What are the names of the two daily guided walks with a naturalist? (The guided walks are offered in French only)

- 5** Give the name of two different places that are part of the historic circuit " Sur la route de la morue ".



The "Colony Trail"

(Map of geology)

5-minutes walk from the start of the Colony Trail



6 How many different rock formations are in Percé? (Each one represented by a different color on the map)

7 WHO AM I?
I'm a remain, or an impression left a very long time ago by plants and animals.
L - O - S - I - F - S

8 True or False: The rocky cliffs on the mainland that once were attached to Percé Rock are called the Two Brothers...

The "Colony Trail"

(Discovering signs along the way)

9 _____

10 1 2 3

11 _____

12 _____

13 _____

14 _____

15 _____

16 _____

17 _____

18 _____

19 _____

The answers are revealed at the colony. Find the secret code to access the treasure.



A PLEASURE TO TASTE THE FLAVOURS OF THE GASPESIE IN A UNIQUE MARITIME ENVIRONMENT OF QUEBEC



RESERVATIONS
T : 418 782-5331
157, ROUTE 132, PERCÉ
MAISONDUPECHEUR.CA



TABLES DE CHEF - 2 TOQUES
GAULT-MILLAU

FISH & SEAFOOD SPECIALTIES

"À LA CARTE" LUNCH AND DINNER MENU AND "TABLE D'HÔTE" DINNER MENU, FABULOUS FISH & SHELLFISH CHOICES // CERTIFIED GASPESIAN LOBSTER FROM OUR UNDER WATER CAGES // GRILLS // PIZZAS COOKED FROM OUR MAPLE WOOD OVEN.

GEOPARCDEPERCE.COM



GEOSITES



CAMPING



HICKING TRAILS



MULTIMEDIA ACTIVITIES



PLATFORM ZIPLINE

500 MILLIONS
YEARS OF HISTORY OF THE EARTH TO EXPLORE!



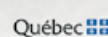
GÉOPARC MONDIAL
UNESCO DE PERCÉ



United Nations
Educational, Scientific and
Cultural Organization



Percé
UNESCO
Global Geopark



DESIGN : 40P

DESIGN : 40P

MUST-DOS



A

Le chafaud discovery centre

Located in the Chafaud building, the Discovery Centre is the starting point for planning your visit to the park's natural areas. Meet with a park warden-naturalist and view the two exhibits – one on the park's history, fauna, flora and geology, the other on the story of the French in Percé's fishing industry during the 16th and 17th centuries.



B

Le Relais des Fous

Located right beside the Northern Gannet colony, a beautiful patio offering fast food service allows you to enjoy a meal and a local beer (Pit Caribou) while taking in a unique sight.



C

Pirate Duval's treasure hunt

Have fun participating in our treasure hunt on Île Bonaventure! Go at your own pace and – who knows? – you might find the treasure hidden by Pirate Duval! The first section is on the Colonies trail and the second on the chemin du Roy trail.



D

Resto des Margaulx

Housed in the former warehouse of the LeBoutillier company on Île Bonaventure, the park's restaurant is a great place to recharge your batteries or pick up a picnic lunch. On the menu: soups, salads, a wide selection of sandwiches, desserts, hot and cold beverages, and local beers.



E

The Northern Gannet colony

The sight of 200,000 birds nesting on Bonaventure Island—including the 110,000 individuals that make up the most accessible Northern Gannet colony in the world—will be the highlight of your visit. On site, a park naturalist will be available to answer your questions.



F

The LeBoutillier house

The LeBoutillier Brothers manager's house holds all operational secrets of a Jersey fishing company. Come for a visit and immerse yourself in this historical place.

DISCOVERY TIME



Guided nature hikes

L'exubérance de la nature

This hike on the Colonies trail paints a portrait of the island's geology and its historical landscapes, as well as the typical flora and fauna of this island environment.

Dans les pas des insulaires

Follow in the footsteps of the islanders on the chemin du Roy trail, visit the restored homes of past residents of Île Bonaventure, learn their history and take in the gorgeous island landscapes and tranquil island spirit along the way.

Wildlife watching

The Northern Gannet colony

See the largest Northern Gannet colony in North America! It's a breathtaking experience. Park warden-naturalists will be there to satisfy your curiosity: you've got 1001 questions, they've got 1001 answers.

Des plumes par milliers

Learn all about the magnificent Northern Gannet and observe its social and mating behaviours at the colony itself.

Family Experience

Free!

Access and equipment loans for youngsters 17 and under



Be part of the solution

Our national parks are places of inestimable richness. How fortunate we are to be able to explore them, stay in them, and enjoy the benefits of nature! **But did you know that their mission is also to protect these magnificent territories and the flora and fauna found therein?**

This heritage belongs to each and every one of us and to future generations too. With several million visits every year, each harmful practice can result in permanent damage to the environment, in addition to affecting the quality of the experience of other visitors. We must remain custodians of this exceptional world of nature so it can be enjoyed for a long time to come.

5 good practices to adopt

Refrain from feeding the animals

Keep your distance when animal watching

Stay on the trails

Don't collect natural elements (plants, dead wood...)

Keep your right of access on hand at all times

CONSERVE FOR TOMORROW



Rich Architectural Heritage

The park has the largest collection of built heritage in the Sépaq network, with 25 wooden buildings. Witnesses to history, these buildings in the Charles-Robin and Île-Bonaventure sectors are representative of the lives of the region's pioneers. The restoration and conservation of these buildings remain an enormously important part of the park's mission.



Over 200 000 seabirds

The Parc national de l'Île-Bonaventure-et-du-Rocher-Percé is home to the largest migratory bird sanctuary in North America. With more than 200,000 breeding birds of 11 different species, these colonies are sensitive to disturbances caused by boats in the waters of the park. To protect the birds, the park does important work – preparing documents, raising awareness and monitoring boating activities – to encourage boaters and kayakers to adopt good practices.

To find out more about the park's seabirds, visit the gannet colony on Île Bonaventure and talk to the park warden-naturalists!

Protected marine zones

The marine area is made up of two zones with a wide variety of landscapes and organisms that are part of the park's conservation mission: a 100-metre strip of sea around Île Bonaventure and the intertidal zone (between the highest and lowest tides) around Percé Rock. A plan is being developed to protect these unique marine habitats. It will include an indicator of the health of the marine zone, enabling the park to manage access to the dive site based on the condition of sensitive areas.



DANS NOTRE NATURE

Parcs nationaux du Québec
Édition 2021

Browse the *Dans notre nature* newsletter

For captivating articles highlighting the mission of our national parks (in French only).

[Click here](#)

DISCOVERY ACTIVITIES

Check out the detailed program (in French only)

It will describe entertaining ways to explore the park from every angle under the sun. What a great way to enrich your visit and to make all sorts of surprising discoveries!

[Click here](#)



IN THE WILD, YOUR SAFETY IS YOUR RESPONSIBILITY

Outdoor activities can involve certain risks.

Always be sure to have the skills and abilities required for the activity you choose. It is very important to find out about the risks involved in the activity, to know and respect your own limits and to use appropriate equipment. Preparing yourself adequately is the first step in the safe and enjoyable practice of your favourite activities.

For more information, visit our website at sepaq.com/security



PCF

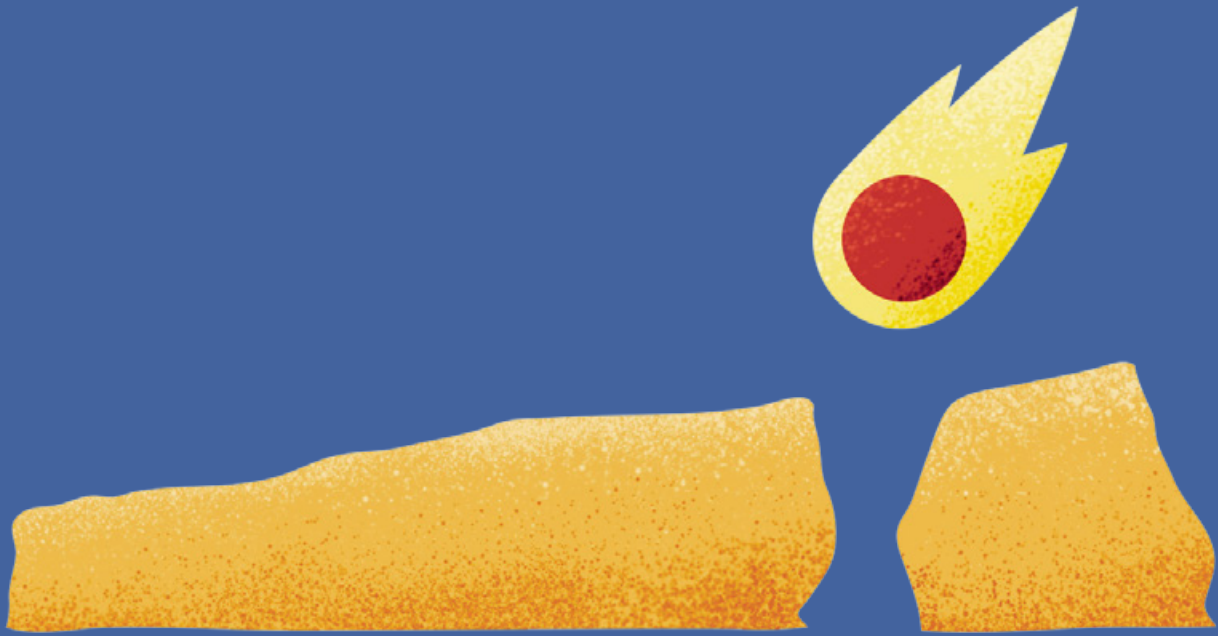


Photos: Mathieu Dupuis, Steven Melanson, Pascal Lévesque



Parc national
de l'Île-Bonaventure-
et-du-Rocher-Percé

sepaq.com/ilebonaventure



“Hey, they say it’s a meteorite that put the hole in the rock.”

To find out what’s real, visit the 5 Gaspesian museums.
Add meaning to your trip.



Parc du
BOURG
de Pabos



museesgaspesiens.com