

COLLECTION ALBERT TURCOTTE.



Je t'aime

CHANSON

50 Cents

MONTREAL

ALBERT TURCOTTE

EDITEUR

JE T' AIME!

Paroles de Gustave Lagye

Musique de François Behr.

Andantino con moto.

CHANT. *p*

PIANO. *p* *Ped.*

Que

Detailed description: This system contains the first musical notation. The vocal line (CHANT) is on a single staff with a treble clef, a key signature of two flats (B-flat and E-flat), and a 6/8 time signature. It begins with a whole rest followed by a half note G4, marked with a piano (*p*) dynamic. The piano accompaniment (PIANO) consists of two staves (treble and bass clefs) with a 6/8 time signature. The right hand plays a continuous eighth-note pattern, while the left hand provides harmonic support with chords and single notes. A *Ped.* (pedal) marking is present under the first measure.

mf

dit et chan - te l'oi - seau des bois? "Je

mf *Ped.*

Detailed description: This system contains the second musical notation. The vocal line continues with the lyrics "dit et chan - te l'oi - seau des bois? "Je". The piano accompaniment continues with the same rhythmic pattern. A *mf* (mezzo-forte) dynamic is indicated at the start of the system. A *Ped.* marking with an asterisk is placed under the piano accompaniment.

pp *riten. un poco.*

t'ai - - - me! Je t'ai - - - me!" Pour

mf *pp* *riten. un poco.* *Ped.* 1

Detailed description: This system contains the third musical notation. The vocal line concludes with the lyrics "t'ai - - - me! Je t'ai - - - me!" and "Pour". The piano accompaniment concludes with a final chord. Dynamics include *pp* (pianissimo) and *riten. un poco.* (ritardando a little). A *Ped.* marking with an asterisk is present, followed by a final measure marked with a 1.

222 486 CON

mf espressivo. *riten. un poco*

Ped. * *Ped.* * *Ped.* * *Ped.* * *Ped.* *

a tempo. *p* *mf*

Que dit la plage au ma - tin ver - meil? "Je

p a tempo.

Ped. * *Ped.* * *Ped.* *

pp *riten. un poco.* *a tempo.*

t'ai - me! Je t'ai - me!" Que dit la mer lors-que

mf *pp* *riten. un poco.* *a tempo.*

Ped. * *Ped.* * *Ped.* *

mf *pp* *riten. molto* *p*

fruit le so - leil? "Je t'ai - me! Je t'ai - me!" La

mf *pp* *riten. molto*

Ped. *Ped.* * *Ped.* *

a tempo. *mf* *pp*

quai mon cœur ré-pond - il à sa voix? "Je t'ai - me! Je

a tempo

Ped. * *Ped.* * *Ped.* * *Ped.* *

riten. molto *p a tempo.* *poco a poco cresc*

t'ai - me!" La dou - ce chan-son re-com - men - ce tou-jours, Ber-

a tempo.

pp *riten. molto* *p* *poco a poco* *cresc*

Ped. * *Ped.* * *Ped.* *

allargando *ff con molto passione.*

cant la sai - son des can - di - des a-mours, E - cho d'un cé-

allargando. *ff*

Ped. * *Ped.* * *Ped.* *

riten. molto *pp* *a tempo.*

les - te po - è - me!

riten. molto *a tempo*

colla parte

Ped. * *Ped.* * *Ped.* * *Ped.* *

a tempo. *poco a poco cresc*

Terre, et les Cieux, et la Nuit et le Jour, Tout parle, et tout chante en li

p *poco a poco cresc*

Ped. * *Ped.* * *Ped.* *

allargando *ff con molto passione.*

vres - se d'a - mour, Je t'ai - me! "Je t'ai - me! Je

allargando.

Ped. * *Ped.* * *Ped.* *

riten. molto *pp*

t'ai - me!"

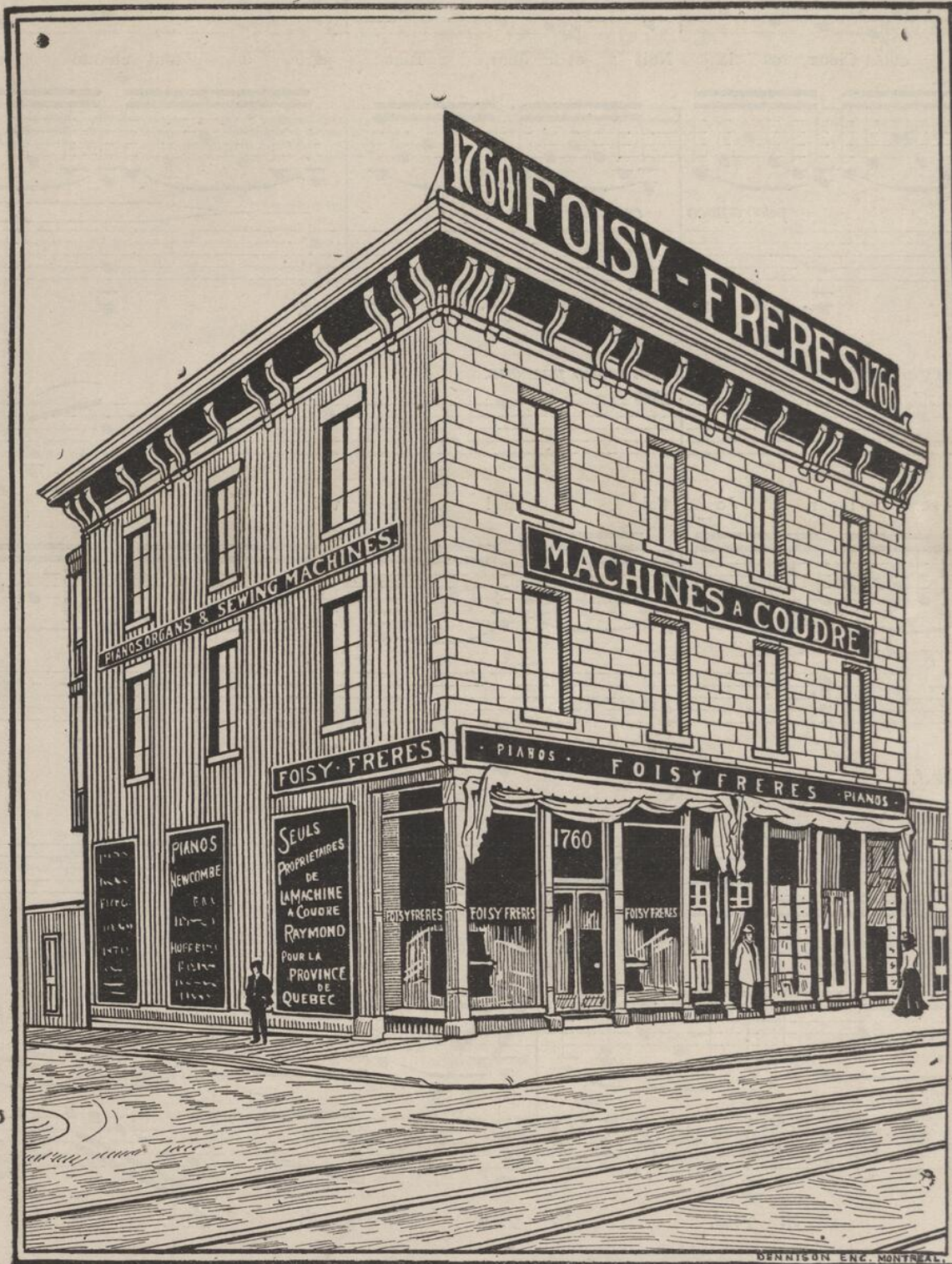
riten. molto *a tempo* *mf espressivo.*

colla parte

Ped. * *Ped.* * *Ped.* * *Ped.* *

riten. un poco *f*

Ped. * *Ped.* * *Ped.* * *Ped.* *



MAISON ETABLIE EN 1879.

Telephone Bell Est-1644

F OISY }
 RÈRES }

.....PIANOS, ORGUES.....

MACHINES à COUDRE,

Musique en Feuilles, Instruments de tous genres, etc., etc.

1760 et 1766, rue Ste-Catherine,

Coin Sanguinet, **MONTREAL.**